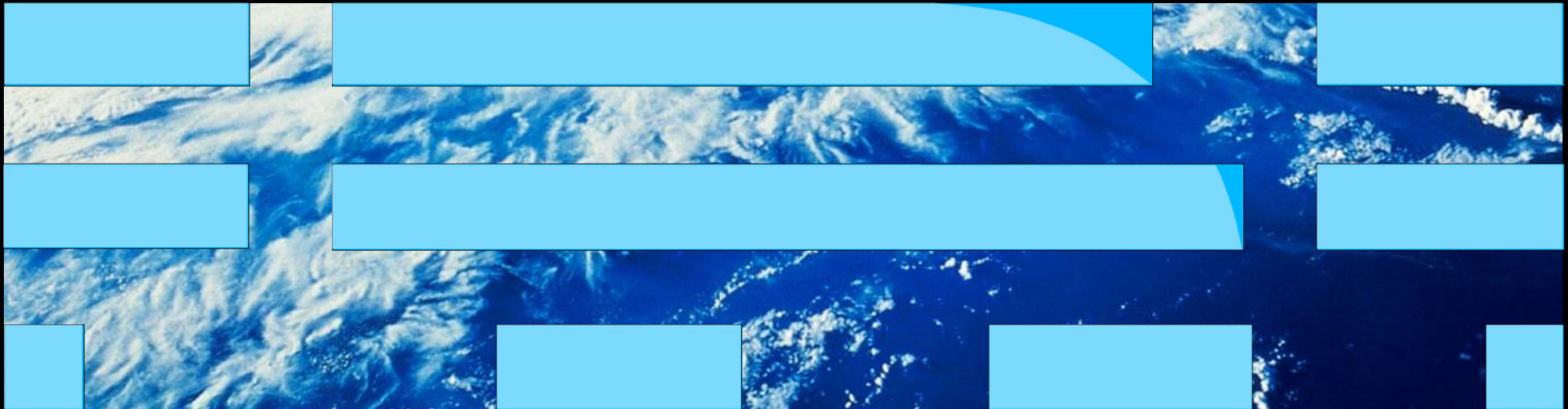




# *Maximo Scheduler 7.1.1*



## *Why Maximo Scheduler ?*

- Maximo customers want the ability to visualize work schedules and related labor resources
- Historically, customer have used Project, Primavera or even Excel to do work and labor scheduling
- These tools are very appropriate for some customers, yet these planning tools are sometimes viewed as too heavy, and require extra work to integrate, to synchronize, and to maintain with Maximo.
- The request for a visual scheduler has continued to increase over the years

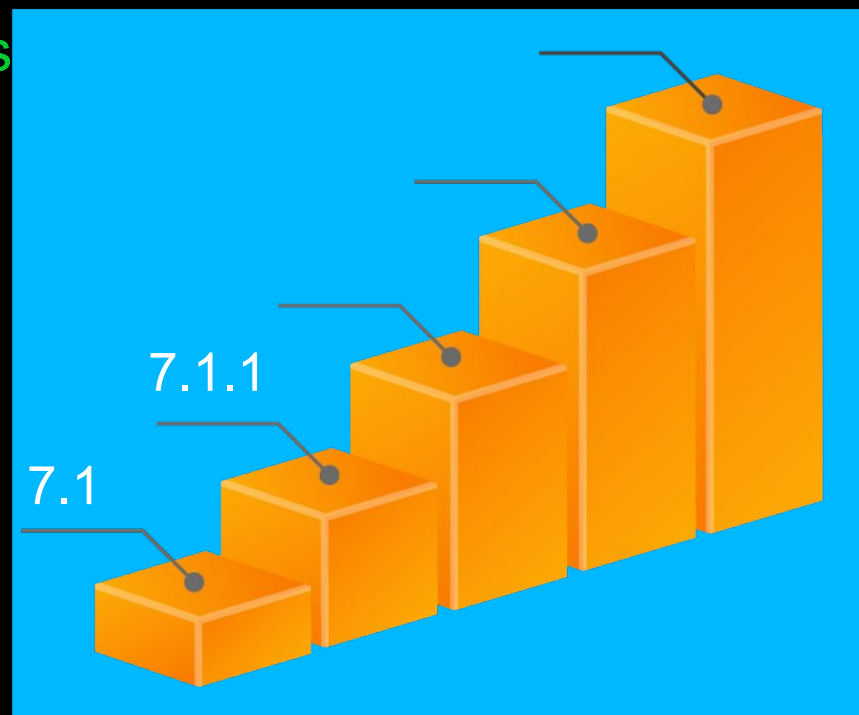
## *Our Vision*

An embedded Graphical tool in Maximo to schedule  
work orders / tasks and PM forecasts



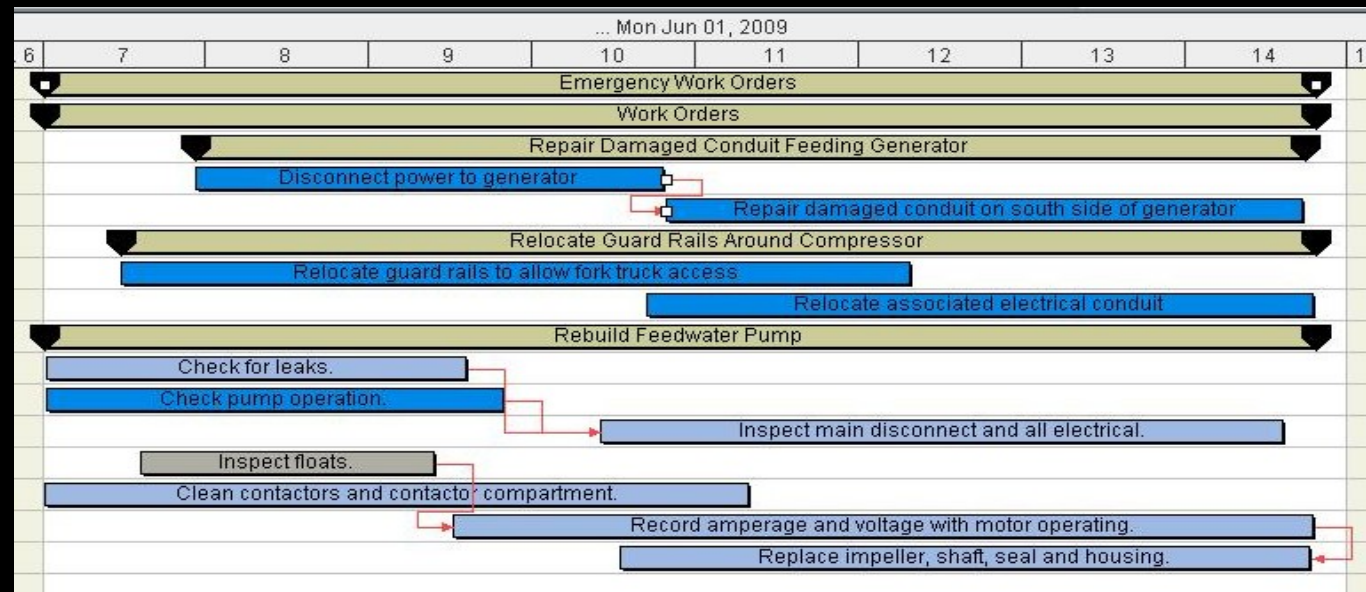
## Our Strategy

- Enhance Maximo Scheduler with more features based on customer feedback
  - 
  -
- Continue to support adapters for Ms



# What is Maximo Asset Management Scheduler 7.1.1?

A Maximo application that contains a Gantt tool to schedule work orders, tasks and PM forecasts graphically



---

*How is it delivered?*

**Delivered as an extension to  
Maximo Asset Management 7.1 and TAMIT 7.1**

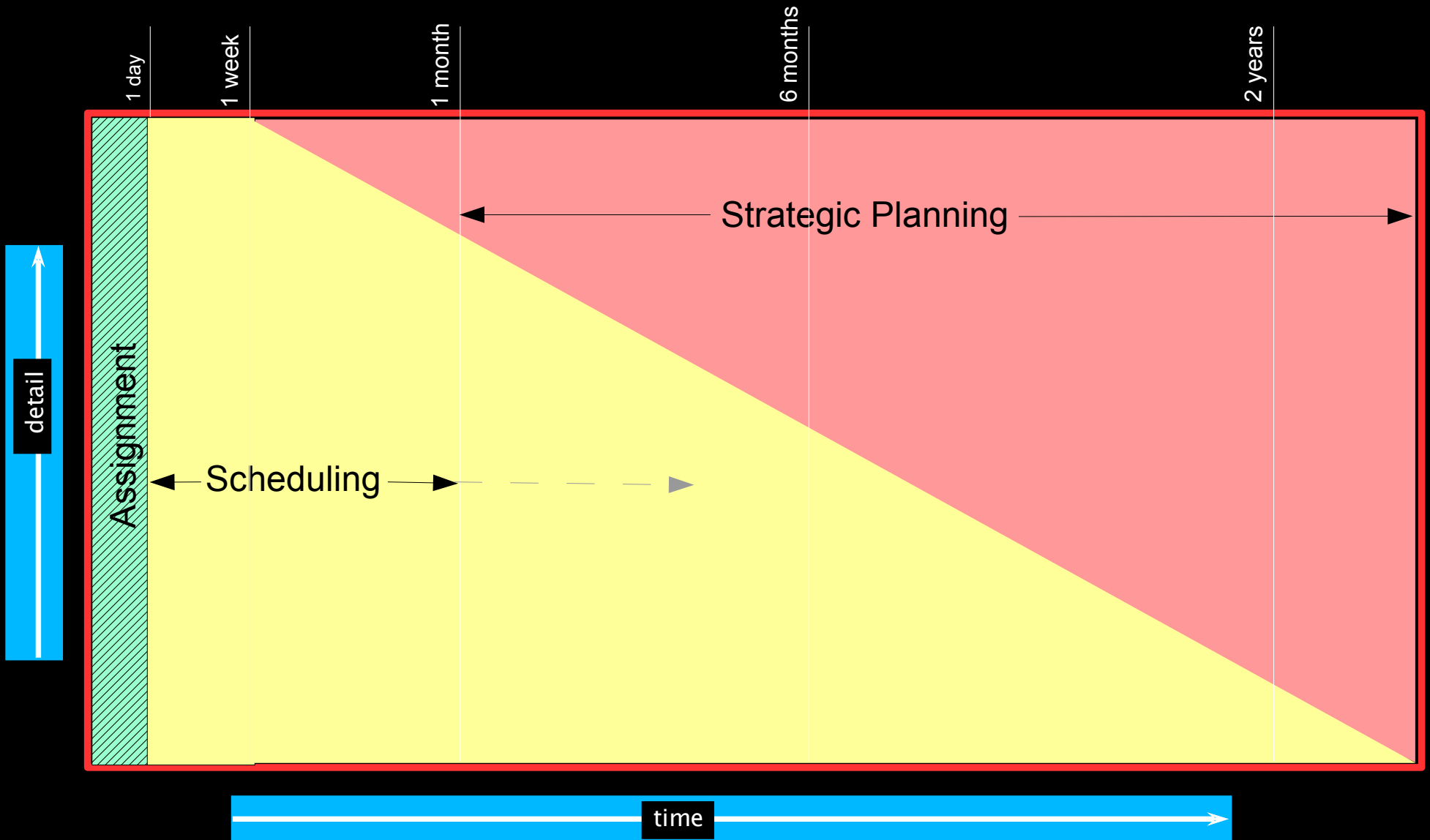
---

## *Availability*

**Scheduler 7.1 – August 28, 2009**

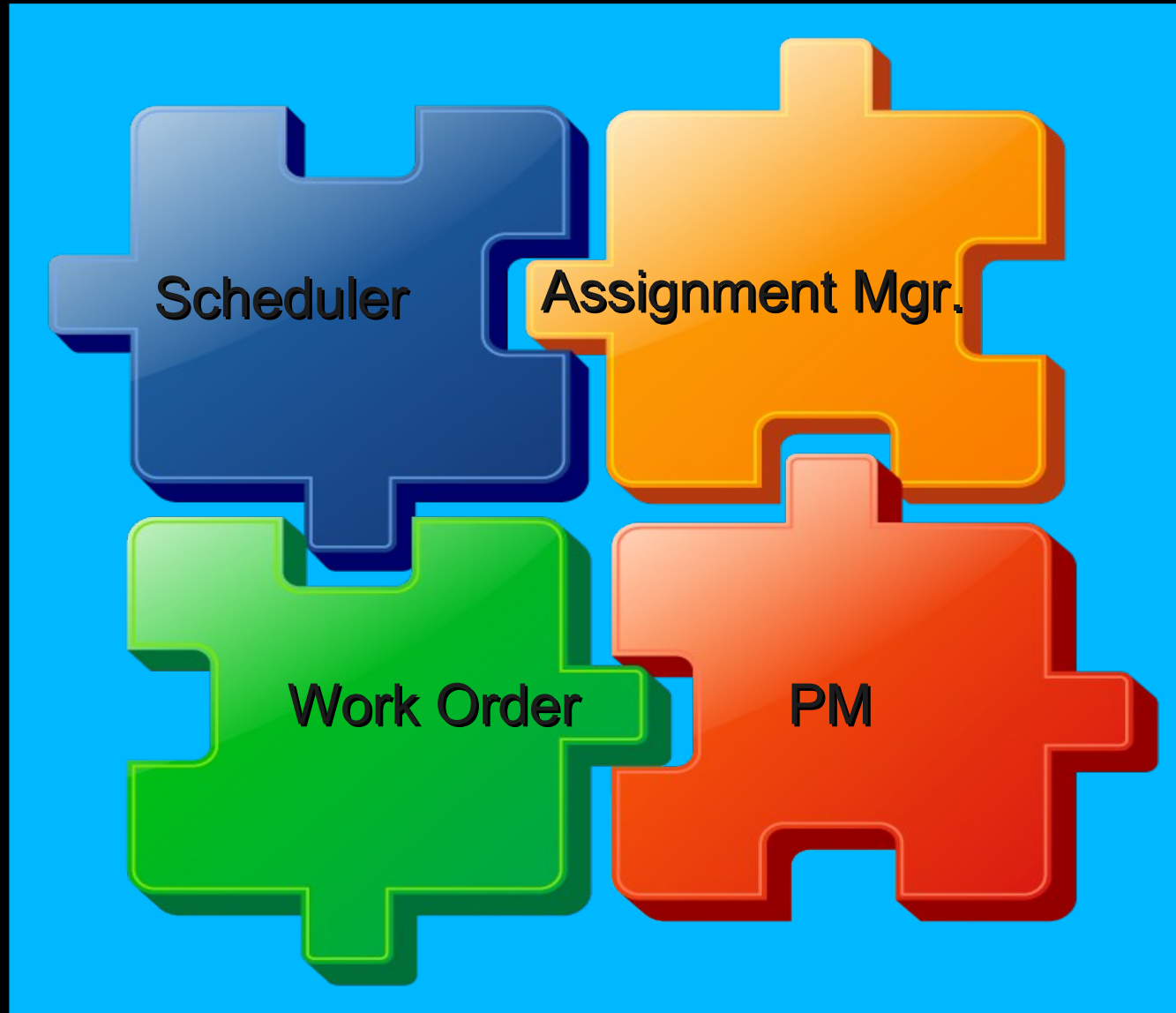
**Scheduler 7.1.1 – March 5, 2010**

# Planning Horizon





*Applications enhanced...*



# Features

**Scheduler**

- Gantt View*
- Drag and drop work order and tasks*
- View craft requirements*
- Manage dependencies*
- Perform CPM*
- “What if” scenarios*

**Assignment Manager**

- Many to many assignments*
- Part of Work Order application*
- Bulk reschedule*

**Work Order**

- Date constraints*
- Task dependencies*
- “Schedulable” tasks*

**PM Forecasts**

- Date and meter based forecasts*
- Edit forecast dates*
- View forecasts in Scheduler*
- View craft requirements*
- Date constraints*

*Demo*