



Data Security

The Process of classifying securing and monitoring corporate data

IBM Software

PCTY2010



Pulse Comes to You

Optimising the World's Infrastructure

27 May 2010 London

Agenda

- Introduction to Data Security
- Information Flow
- Organising the Effort
- Based on Policy or Standard
- The Data Management Process
- Starts and ends with People
- Importance of Business Process
- Enabling Technology
- Conclusions



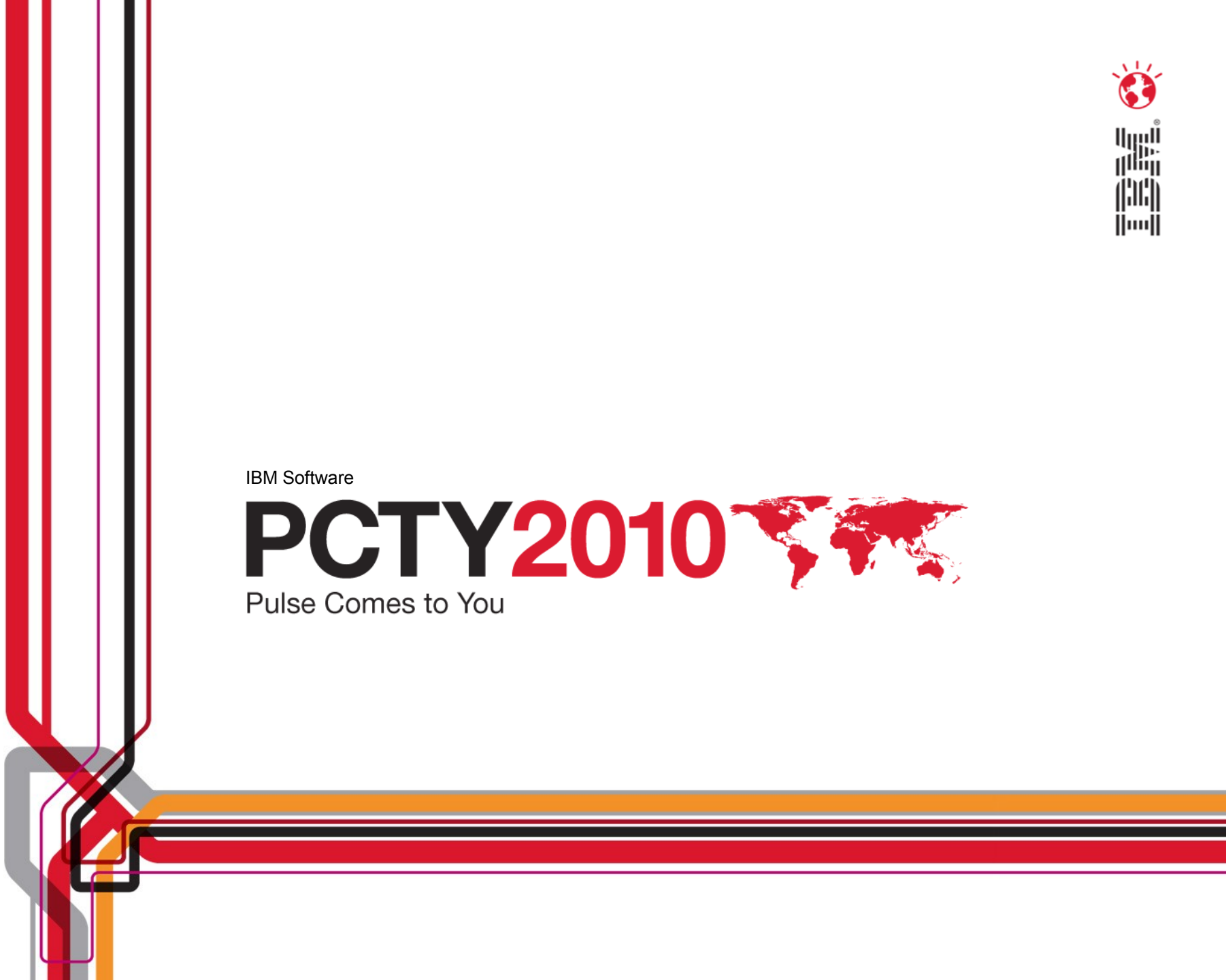


IBM Software

PCTY2010



Pulse Comes to You

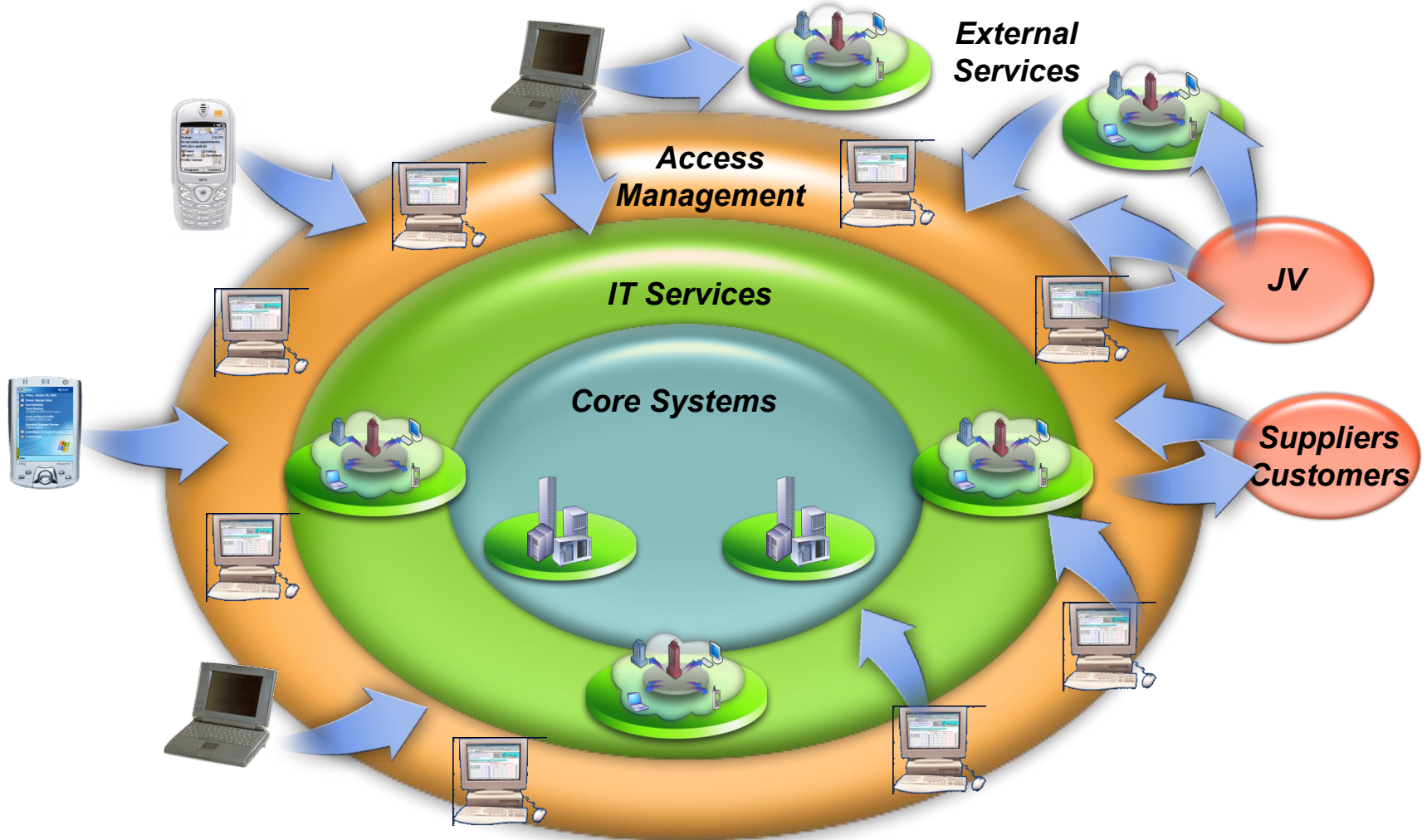


Introduction to Data Security

- In the modern company information is the greatest asset
- Importance is confirmed with increased regulation
- Embarrassment and reputational damage exposed
- Internal people are often the primary cause of loss
- Consider the Architecture
- Business processes are effected
- Optimised with Technology
- Managed through Risk
- Driven by Policy



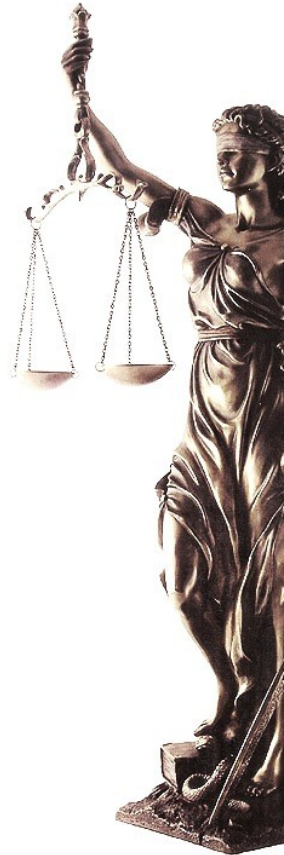
Information Flow – Collaborative Architecture



Related Regulations & Standards

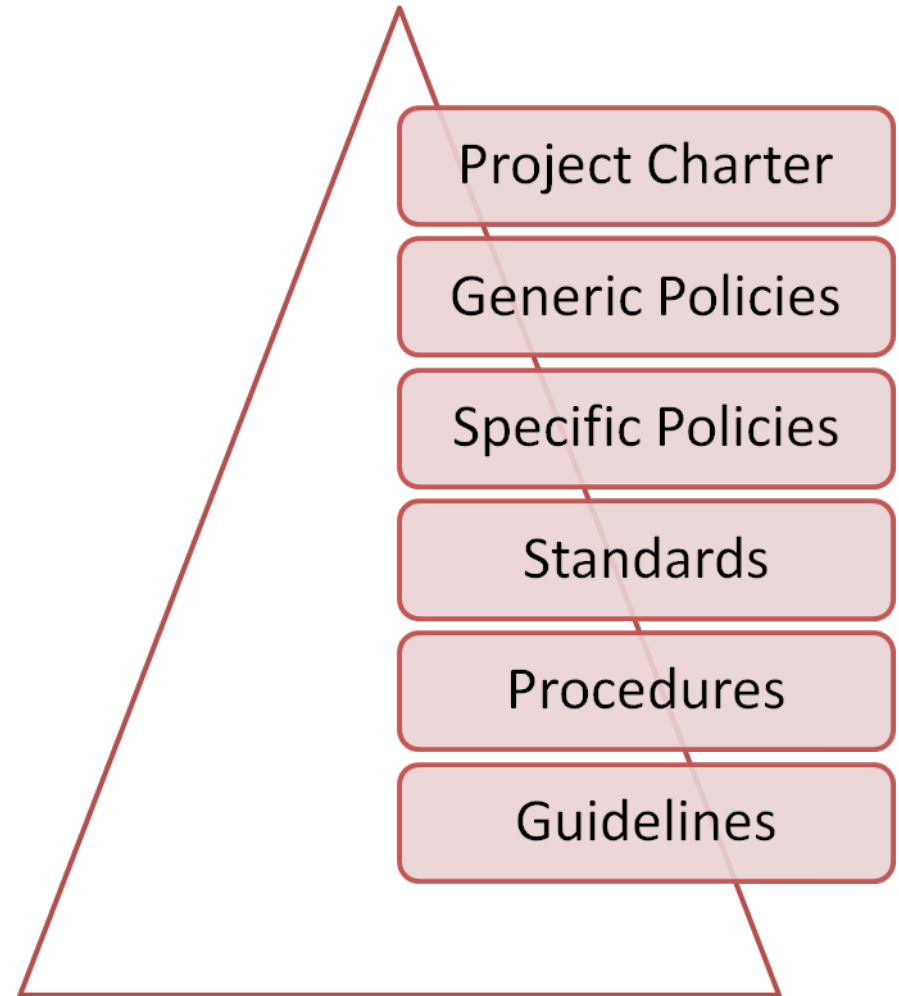
Some of the laws and standards affecting UK organisation:

- Data Retention (EC Directive) Regulations 2007 No 2199
- Data Protection Act 1998
- HMG Security Policy Framework
- Freedom of Information Act 2000
- Privacy and Electronic Communications Guide
- Basel II
- Payment Card Industry Standard
- Computer Misuse Act 1990
- ISO/IEC 27001

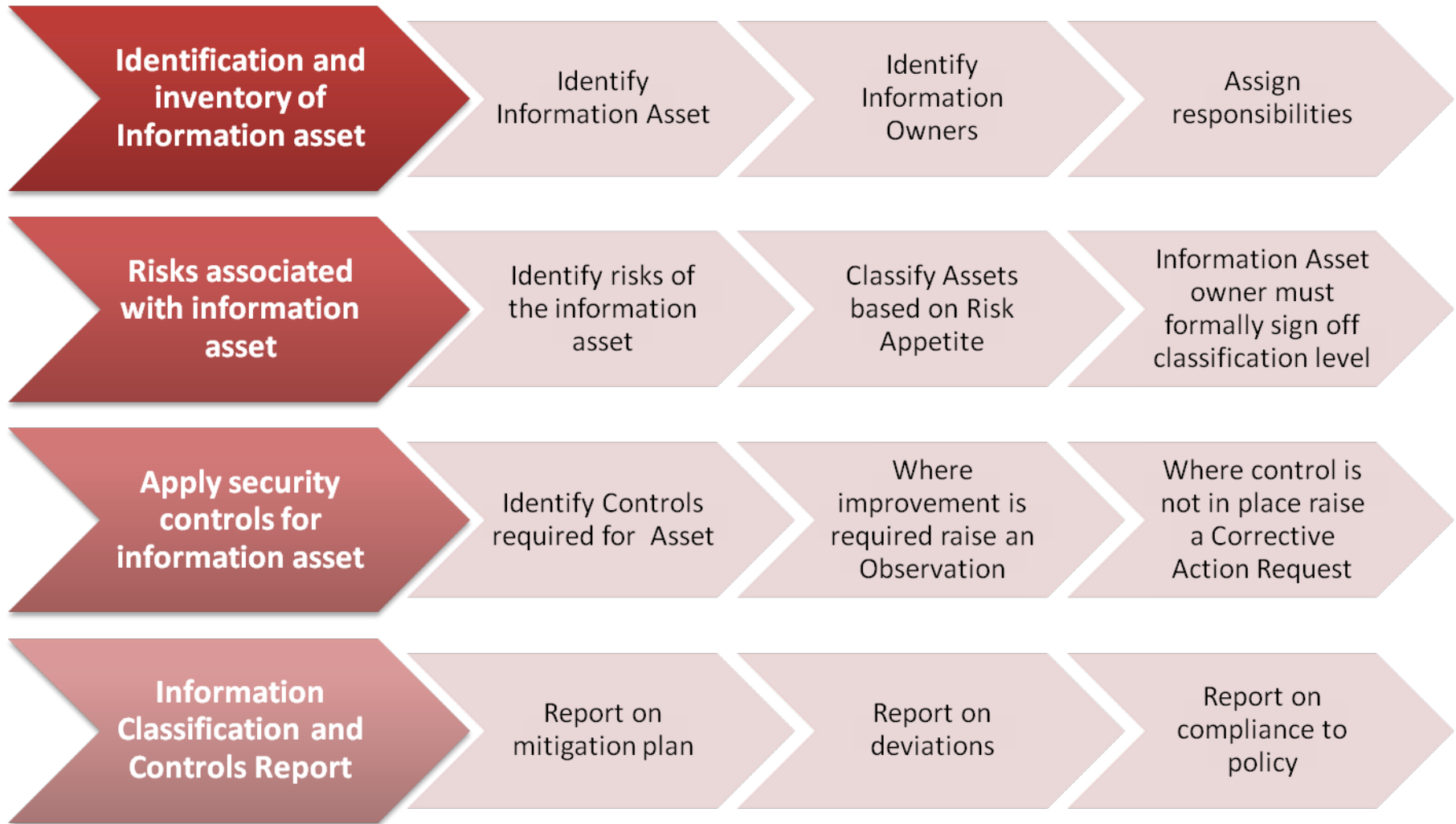


Based on Policy or Standard

- Classification of Data
 - Information Classification
 - Business Impact Levels
- Control Framework
 - Annex A from ISO/IEC 27001:2005
 - HMG Information Assurance Standard 1
 - Base line control set (aligned to ISO/IEC 27002:2005)
- Risk Management
 - ISO/IEC 27005:2008



The Data Management Process



Starts and ends with People

- History tells us that the vast majority of data losses are because of people within
 - Often this is inadvertent
 - Sometimes without consequence
 - Very seldom is it malicious in nature
- Functional Awareness and Education improves the situation
 - Cultural Reviews
 - Efficiency Reviews
 - Communications
 - Training
 - Written Commitment



Importance of Business Process

*When people let us down or technology fails
business must continue...*

- Business as Usual (BaU) processes must be maintained by the asset owners (or authorised deputy)
- Processes must adhere to policy
- Services based environments must incorporate Service Level Agreements (SLA's) with:
 - Performance based indicators
 - Risk based indicators



Enabling Technology

You can't manage what you can't measure!

- Security Incident & Event Management (SIEM) can improve your position significantly
- Data Loss Prevention (DLP) technologies will assist in understanding and managing the movement of information
- Governance Risk and Compliance (GRC) tools have some functionality that can assist in stream-lining the process
- Web Services will enable information sharing
- Security technologies are a critical enabler for the implementation of the control framework



Conclusions

- ✓ Fail or succeed with your people!
- ✓ Business involvement is imperative together with their appreciation of the importance of Data Security
- ✓ Use a proven process or methodology



Questions

