



The Age of Systems Challenges

Alan Harding CEng FIET
INCOSE UK President



Presentation Structure

1. Today's global systems challenges
2. The systems we produce
3. Today's systems engineering approaches
4. Summary



1. Today's global systems challenges



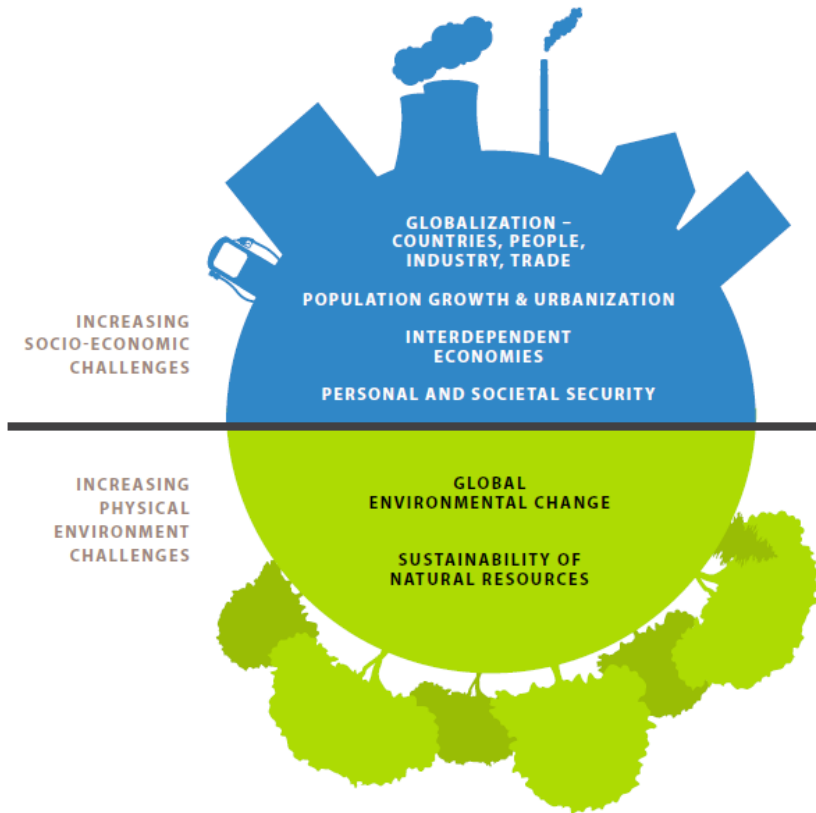
Global Challenges

- Human needs stable over centuries
- Societal needs similar globally
- Systems must respond to needs



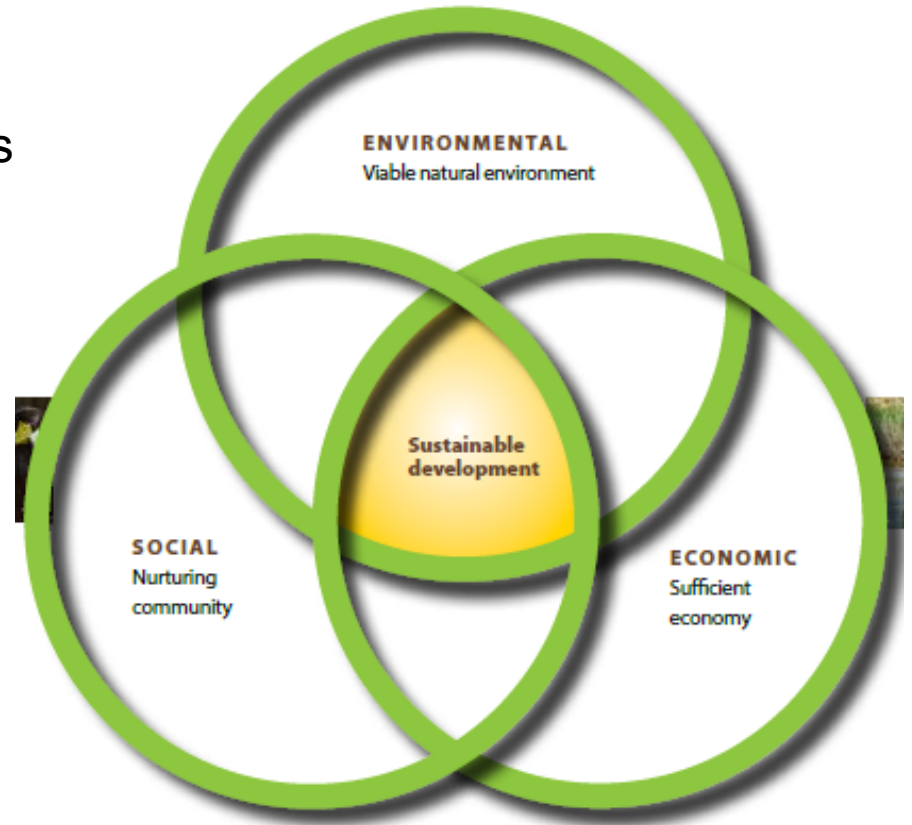
Global Trends

- New demands on systems
- Impact of technology developments
- Demands of the global community
- Interdependencies



Sustainability

- Systems must meet conflicting needs
- Our professional responsibilities
- Possible barriers to sustainability

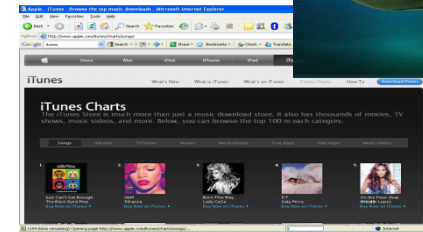
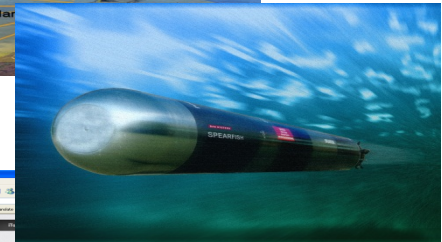


2. The systems we produce



Types of Systems we engineer

- Enterprise – redesign of organisations
- Capability – integrating systems and services
- Product – set of integrated systems and subsystems
- Service – integrating existing and newly delivered systems
- Systems of Systems – combinations of existing and modified systems



Domains where Systems Engineering is applied

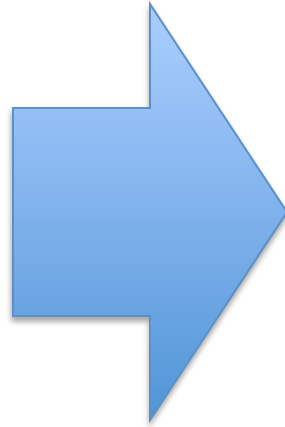
- Aerospace and Defence
 - Traditional domains
 - Bespoke products
- Steady wider adoption
 - Adaptation
 - Diversification
 - Sharing good practice
 - Increasing product focus
 - Need clear value proposition

SYSTEMS
ENGINEERING
IS PRACTICED
DIFFERENTLY
ACROSS MANY
APPLICATION
DOMAINS

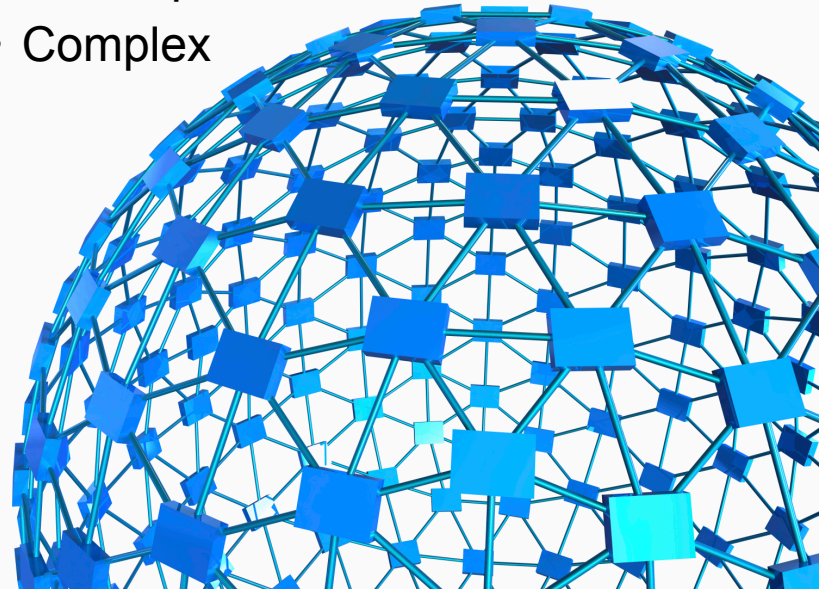


System characteristics our stakeholders require

- Sustainable
- Scalable
- Safe
- Smart
- Stable
- Simple
- Secure
- Socially Acceptable



- Interconnected
- Interdependent
- Complex



3. Today's systems engineering approaches



Organisational Systems Engineering Capability

- Variety of organizations that use SE or provide SE services:
 - Business with multiple project teams
 - Project that spans multiple businesses
 - SE team within either of the above
 - Business with a single project team
 - SE service supplier
- Variation - product types, domain, country, maturity levels, commercial context ...

Organisation
& Culture

Knowledge &
Information

People

Process

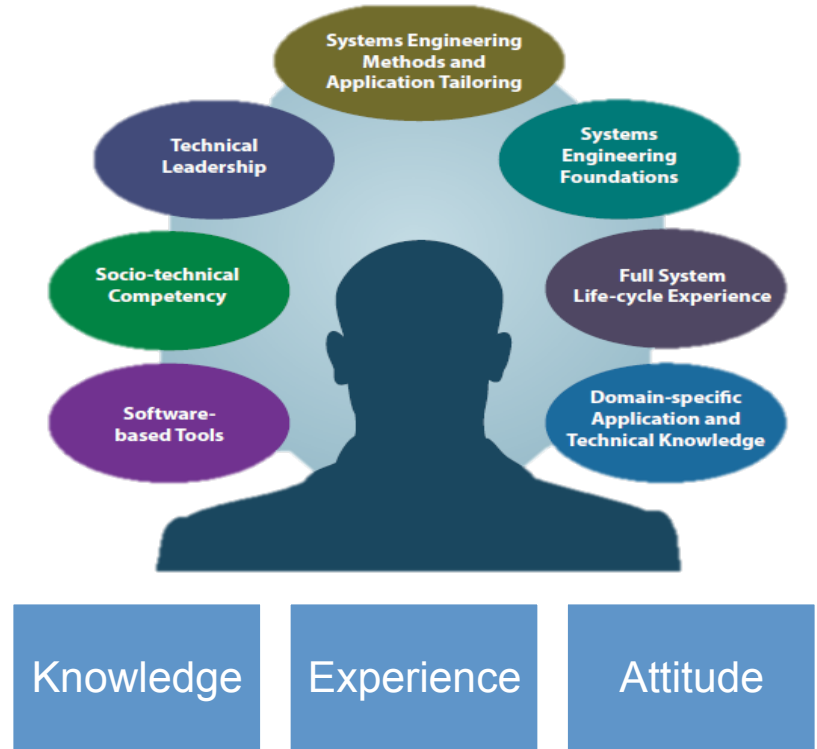
Methods and
Tools

Enabling
Infrastructure



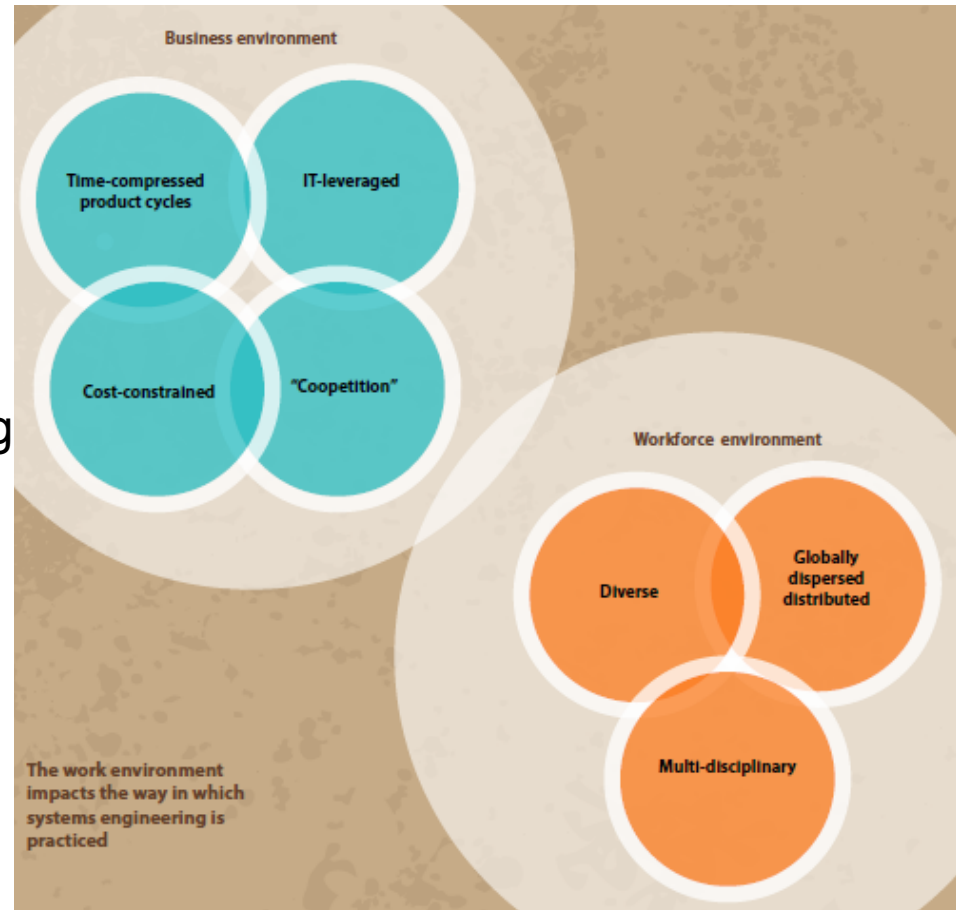
Individual Systems Engineering Competency

- Systems engineer is the lynchpin
- Must lead/influence decision-making
- Vital to balance soft and hard skills
- T-shaped individual
- Competency is key
 - Specialist SE skills
 - Wider general understanding
 - Leadership and soft skills



Drivers for change

- Need to adapt our approaches
- Need for agility
 - Agile products
 - Agile product development
- “Just enough” systems engineering
 - Influence early decisions
 - Ensure successful delivery
- Enablers
 - Model-based approaches
 - Tool interoperability
 - Standards



4. Summary



Summary

- The global context for systems engineering is ever-more complex
- Sustainability a mainstream issue
- Systems engineering practiced ever-more widely
- Differing challenges in traditional and newer domains
- Systems approaches must evolve to meet these challenges
- Systems engineers must evolve also



Questions



www.incoseonline.org.uk

www.incose.org

