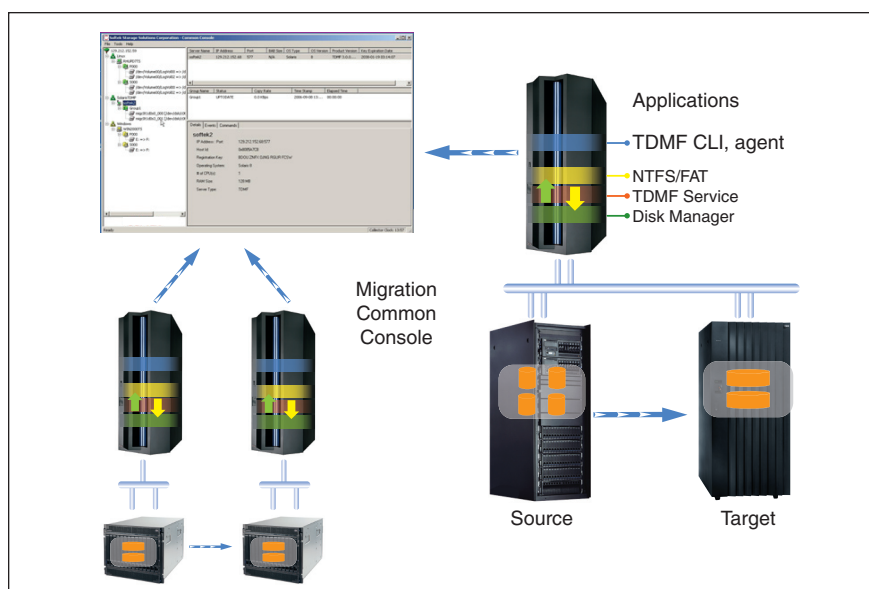


Transferring data quickly—locally and globally—while supporting continuous application and data availability

IBM Migration Services for data – Softek TDMF Windows (IP)



The Common Console feature allows you to monitor your data migration from a single interface.

Providing data mobility locally and globally

To achieve IT infrastructure enhancements and maintenance operations—as well as technology refreshes—you need a data mobility strategy to keep your business running while allowing your infrastructure to change.

IBM Migration Services for data – Softek® TDMF™ (Transparent Data Migration Facility) Windows (IP) is a comprehensive host-based data migration product that moves data nondisruptively locally and globally via Transmission Control Protocol/Internet Protocol (TCP/IP) connections. By providing a migration platform and methodology, the Softek TDMF Windows (IP) offering helps ensure that you are able to successfully achieve your data mobility needs.

The Softek TDMF Windows (IP) offering can help with storage/server refresh or data center relocation or consolidation as part of IT optimization while potentially keeping applications 100 percent available.

Highlights

- **Enables continuous application availability during migrations**
- **Works with virtually any storage vendor's hardware in multivendor environments**
- **Moves data locally or globally**
- **Is designed to ensure data integrity and protection**
- **Centralizes management for open system migrations through the Common Console**
- **Standardizes data migration methodology with proven, repeatable practices to plan, move and validate migrations**
- **Supports Microsoft® Windows® 2000 and Windows 2003 environments**

Supporting the integrity of data

The Softek TDMF Windows (IP) solution helps maintain data integrity with synchronous write technology for local migrations and asynchronous write technology for remote migrations. The asynchronous mode can be used with any TCP/IP link. Both options employ continuous data validation to help ensure complete data synchronization of the target data.

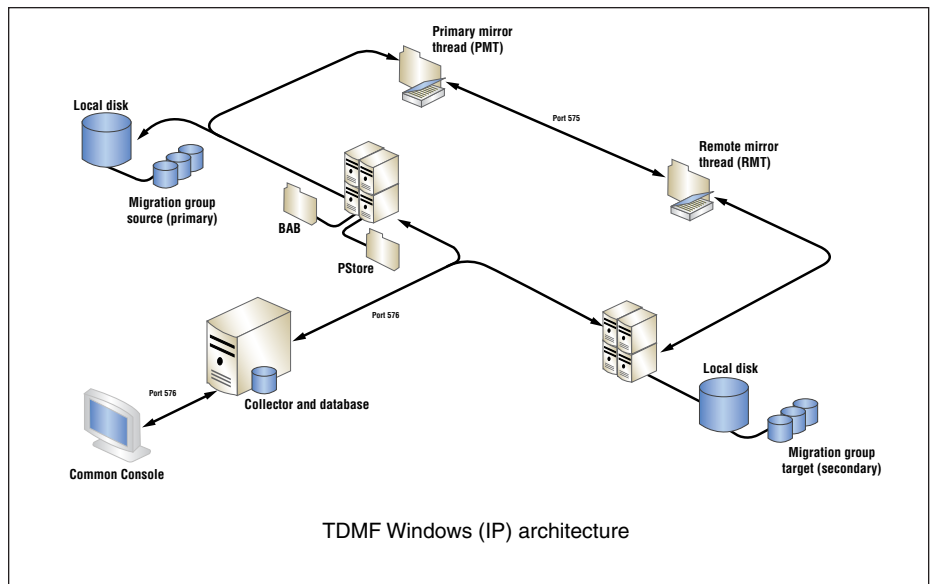
Managing with the Common Console

Softek TDMF Windows (IP) can be managed by the intuitive migration Common Console, which provides centralized monitoring, control and management of migrations across the enterprise.

Aligning performance with application needs

Application availability and performance are paramount in any migration. The Softek TDMF Windows (IP) solution is designed to provide the capability to run at optimum speed when the application is idle and to adjust to application demands when necessary.

For distance migrations, the solution preserves application performance using asynchronous migration techniques. And when performing local migrations, the TDMF Windows (IP) solution uses its synchronous mirror driver for virtually unmatched performance.



The Softek TDMF Windows (IP) solution leverages TCP/IP technology to perform data transfers.

With the Softek TDMF Windows (IP) solution, an organization can control the size of the migrated data block and the speed of the transfer. Using advanced buffering, compression and network recovery techniques, the Softek TDMF Windows (IP) solution is designed to function even over slow or unreliable networks.

Helping ensure accuracy with checkpoint copies

When performing distance migrations, it's prudent to conduct test cutovers prior to the actual cutover to ensure that all the resources are available and working in the new location. The Softek TDMF Windows (IP) offering provides a checkpointing mechanism that allows the user to get application-consistent, point-in-time copies of data at the remote location for testing. Disks can be easily resynchronized after the test without resending all the data.

Moving data with the Softek TDMF family

The Softek TDMF family of products is designed to move data volumes online locally or over distance, across platforms, and to and from virtually any storage hardware with minimal or no effect on application availability.

With a ten-year track record of reliability, the Softek TDMF offering has become an industry leader in moving data, and it is an ideal software to use when upgrading storage and servers or consolidating and relocating data centers. The products are available in the form of a software license, a project engagement or an element of a managed service agreement.

The Softek Nonstop Data Mobility™ offerings from IBM provide a simple, unified solution for moving data without disrupting the enterprise environment—a critical component to IT operational practice.

Softek TDMF Windows (IP) platform features, functions and benefits		
Feature	Function	Benefit
Storage vendor independence	Host-based software migrates data across leading storage environments	Supports flexibility in vendor choice and provides negotiating power
Flexible migration options	Provides control over input/output (I/O) rate and central processing unit (CPU) overhead for read/write, pacing/throttling, tunable copy and replication rate, and adjustable block size of each read/write	Enables online migration activity while maintaining optimal application performance and service levels
Resilient architecture	Current state of migration is maintained, regardless of graceful or nongraceful shutdown, to help ensure continued recoverable migrations	Migration process can continue in the event of server shutdown and restart
Global migration via TCP/IP	Enables network migration	Optimizes flexibility and allows for remote data migration
Common Console across open systems	View and execute migrations in multiple environments from a single console	Easier view and management of large migrations or multiple migrations across the enterprise
Network compression	Software data compression	Allows data transfer to happen more quickly because less data is sent over the network
Network bandwidth control	The network data transfer speed can be controlled	Allows data migration traffic to intermix on a network to maintain application performance
Multiple concurrent copies	Multiple copy connections across the network	Reduces the elapsed time to complete the data migration
Logical volume grouping	Enables a group of migration volumes to be collectively migrated without disruption	Easier management of large migrations
Data transfer restartability	All data synchronization activities are restartable	Reduces the elapsed time for a data migration because a network outage will not cause all the data to be resent across the network

Note: The Softek TDMF Windows (IP) offering supports server editions of the Windows 2000 and Windows 2003 operating systems.

Why IBM?

IBM, with the acquisition of Softek, combines a comprehensive data migration solution with its existing worldwide delivery expertise in data management in storage array, host and virtualized IT environments. IBM's proven methodology

and best practices, together with its worldwide network of IBM Business Partners, can help you increase the flexibility, efficiency and reliability of moving data, supporting your ability to respond more quickly to marketplace dynamics.

For more information

To learn more about the IBM Migration Services for data – Softek TDMF Windows (IP) offering, contact your IBM sales representative or IBM Business Partner, or visit:

ibm.com/services/storage/migration



© Copyright IBM Corporation 2007

IBM Global Services
Route 100
Somers, NY 10589
U.S.A.

Produced in the United States of America
06-07
All Rights Reserved

IBM and the IBM logo are trademarks or registered trademarks of International Business Machines Corporation in the United States, other countries, or both.

Nonstop Data Mobility, Softek and TDMF are trademarks or registered trademarks of Softek Storage Solutions Corporation in the United States, other countries, or both. Softek Storage Solutions is an IBM company.

Microsoft and Windows are trademarks of Microsoft Corporation in the United States, other countries, or both.

Other company, product and service names may be trademarks or registered trademarks or service marks of others.

The information contained in this documentation is provided for informational purposes only. While efforts were made to verify the completeness and accuracy of the information contained in this documentation, it is provided "as is" without warranty of any kind, express or implied. In addition, this information is based on IBM's current product plans and strategy, which are subject to change by IBM without notice. IBM shall not be responsible for any damages arising out of the use of, or otherwise related to, this documentation or any other documentation. Nothing contained in this documentation is intended to, nor shall have the effect of, creating any warranties or representations from IBM (or its suppliers or licensors), or altering the terms and conditions of the applicable license agreement governing the use of IBM software.