



IBM Software

# UK Innovate 2010

The Rational Software Conference

Smarter software for a smarter planet.



IBM Software

**UK Innovate2010**

The Rational Software Conference

# Enterprise Architecture Future Forward

Martin Owen  
System Architect



Smarter software for a smarter planet.



IBM Software

**UK Innovate2010**

The Rational Software Conference

# IBM Rational Enterprise Architecture Strategy & Roadmap

Martin Owen

Senior Product Management Lead  
Enterprise Architecture



Smarter software for a smarter planet.



## DISCLAIMER

This presentation represents future product direction and strategy and is presented under terms of a Confidentiality Agreement.

The information on products is intended to outline our general product direction and it should not be relied on in making a purchasing decision. The information on products is for informational purposes only and may not be incorporated into any contract. The information on the products is not a commitment, promise, or legal obligation to deliver any material, code or functionality. The development, release, and timing of any features or functionality described for our products remains at our sole discretion.

Information is confidential and must not be shared or redistributed without permission from IBM.

Plans are based on best information available and may change in future.



# Agenda

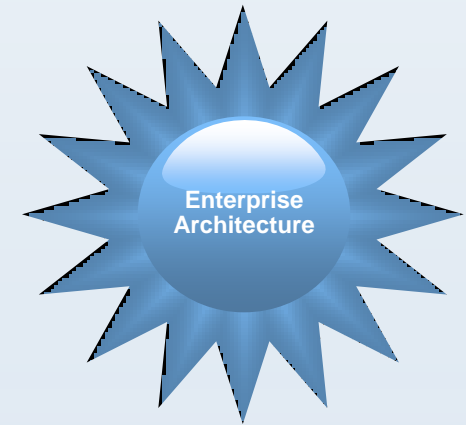
Enterprise Architecture portfolio overview and strategic objectives

Recent history

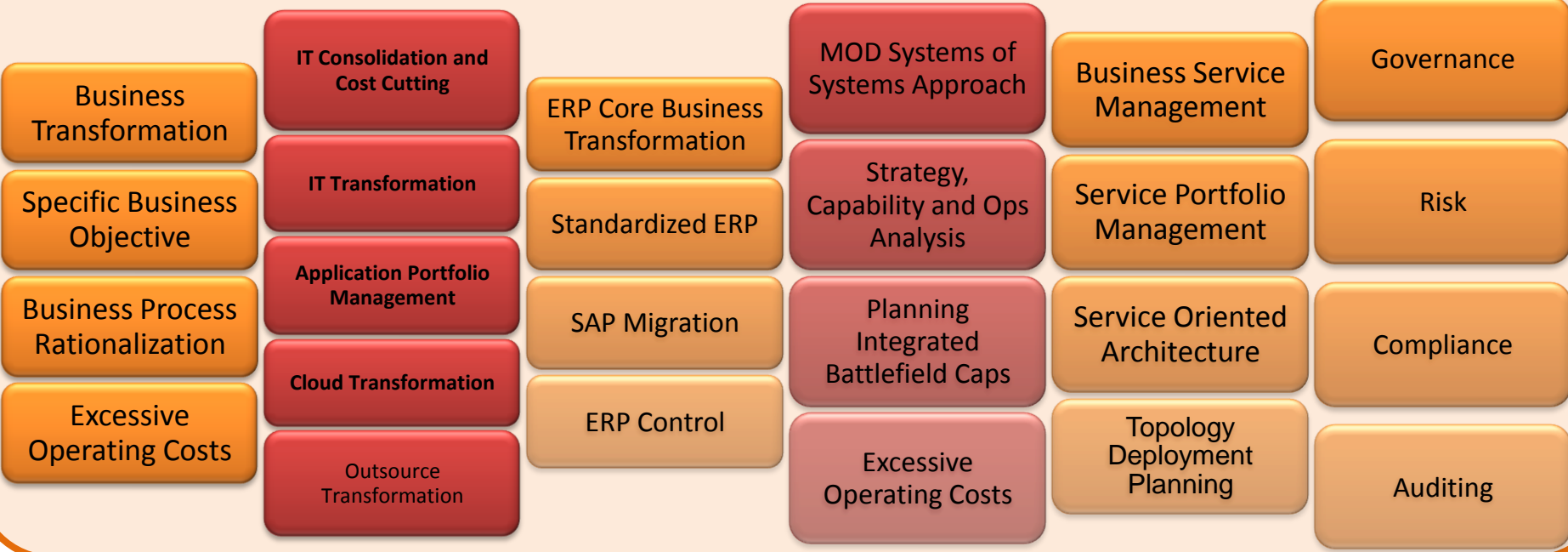
Multi-year roadmap and vision

- Portfolio Vision

- Architecture Vision



# How can Enterprise Architecture help your business?



## How can Enterprise Architecture help your business?

### Understand What You Have

- Current state analysis
- Your intellectual property and Assets

### Satisfy Mandated Compliance

- Regulatory or contractual
- DoDAF, TOGAF, FEA (iRMA), etc.

### Manage the Portfolio

- Applications/Products
- Improved reuse across organization

### Visualize and Communicate

- Beyond basic drawing tools

### Manage Outsourcing

- Customer: Req'ts, specs, testing
- Vendor: Actual architectures

### Improve What You Have

- Find incremental improvements
- Manage business transformation

### Pass an Audit

- Architecture & business transparency
- Repeatable, documented

### Return on Assets

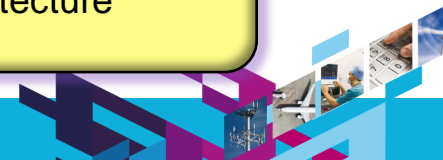
- Leverage elements across subsystems and product lines

### Common Project Starting Points

- Initiate new projects from a common starting point based on an EA model

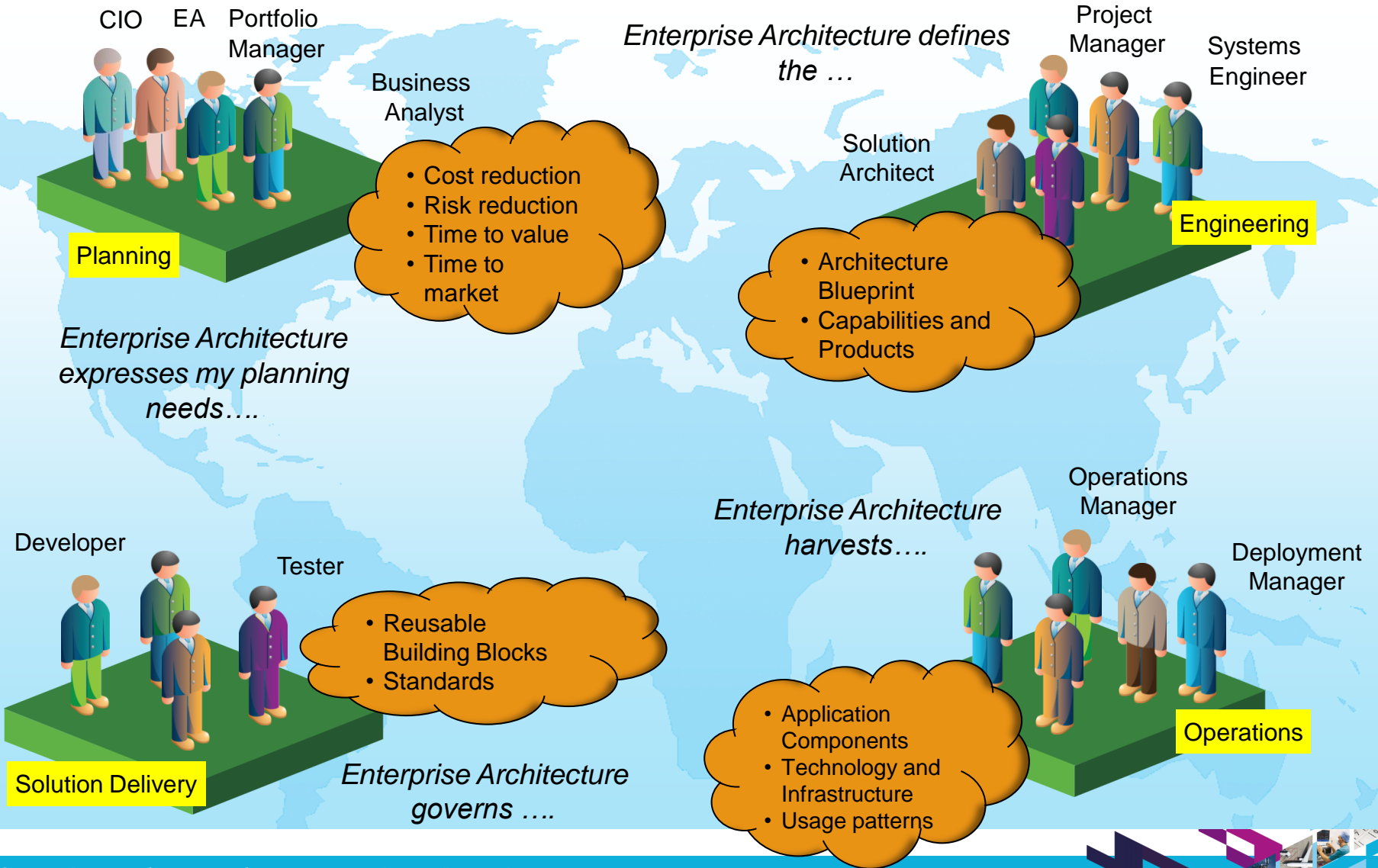
### Manage Packaged Applications

- Integrate with rest of architecture



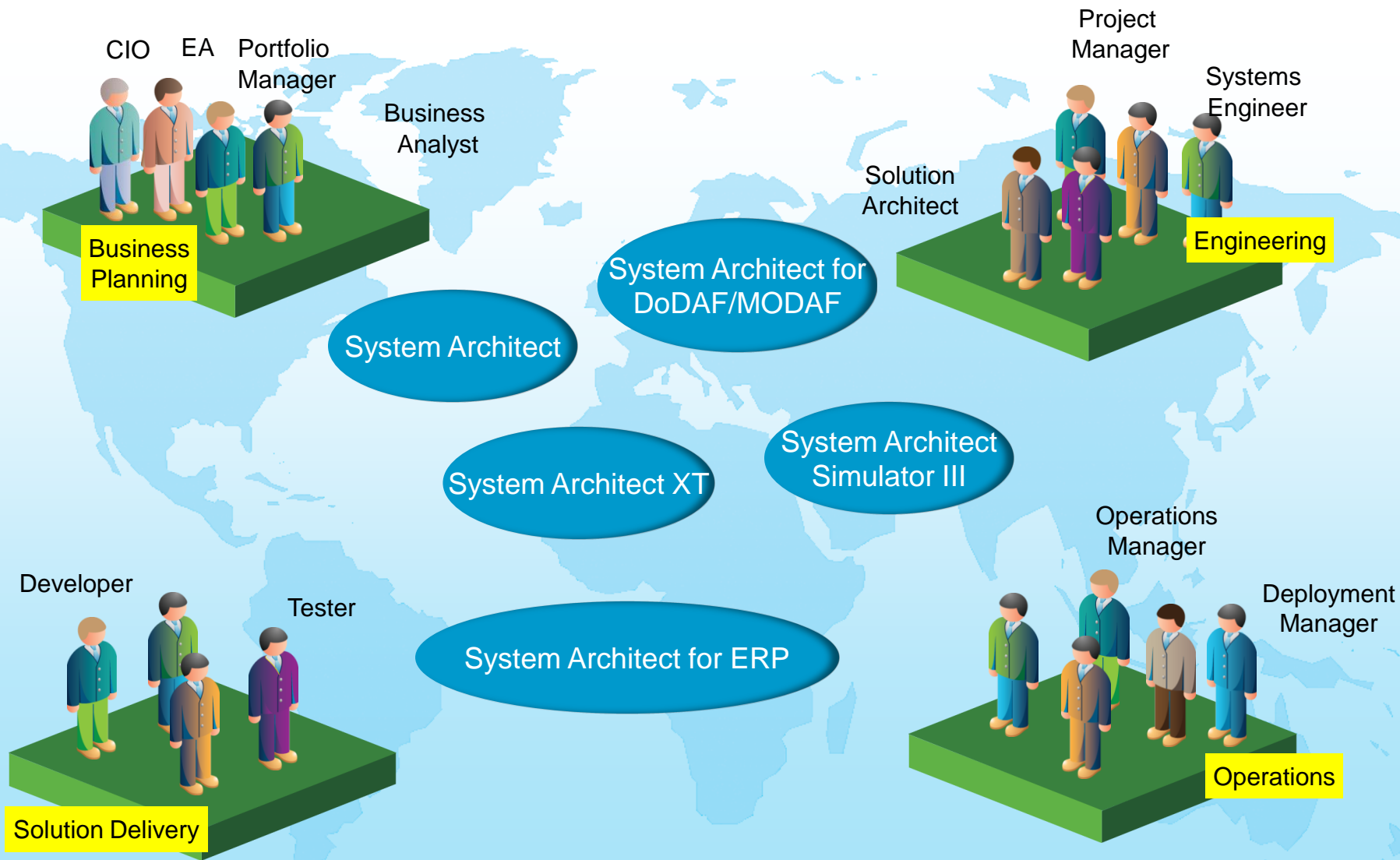


# Customers value Enterprise Architecture in different ways

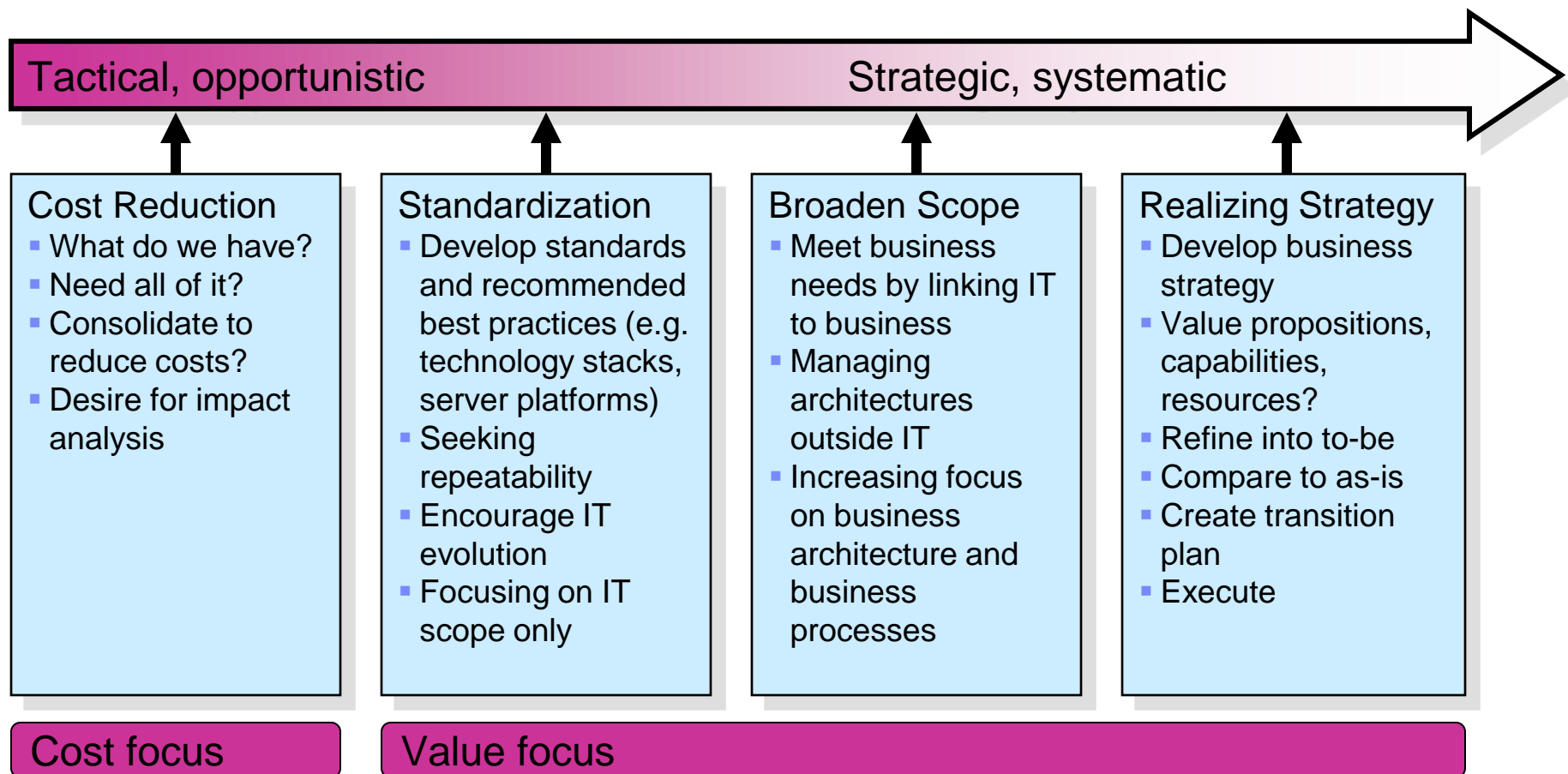




# Rational solutions address these problems today



# Enterprise Architecture Adoption



Organizations often move through a set of phases as they adopt EA



## The Rational Enterprise Architecture Strategy

### Deliver market-leading Enterprise Architecture tools and practices

- *Relevant for all types of cultures, including business/ engineering / compliance and market-driven*

### Foster an Enterprise Architecture ecosystem

- *Enable partners and customers to provide value-add capabilities on the Enterprise Architecture platform*

### Innovate while protecting customer investments

- *Deliver next-gen capabilities in a common product family*
- *Enable adoption by supporting backward compatibility and providing smooth migration paths*

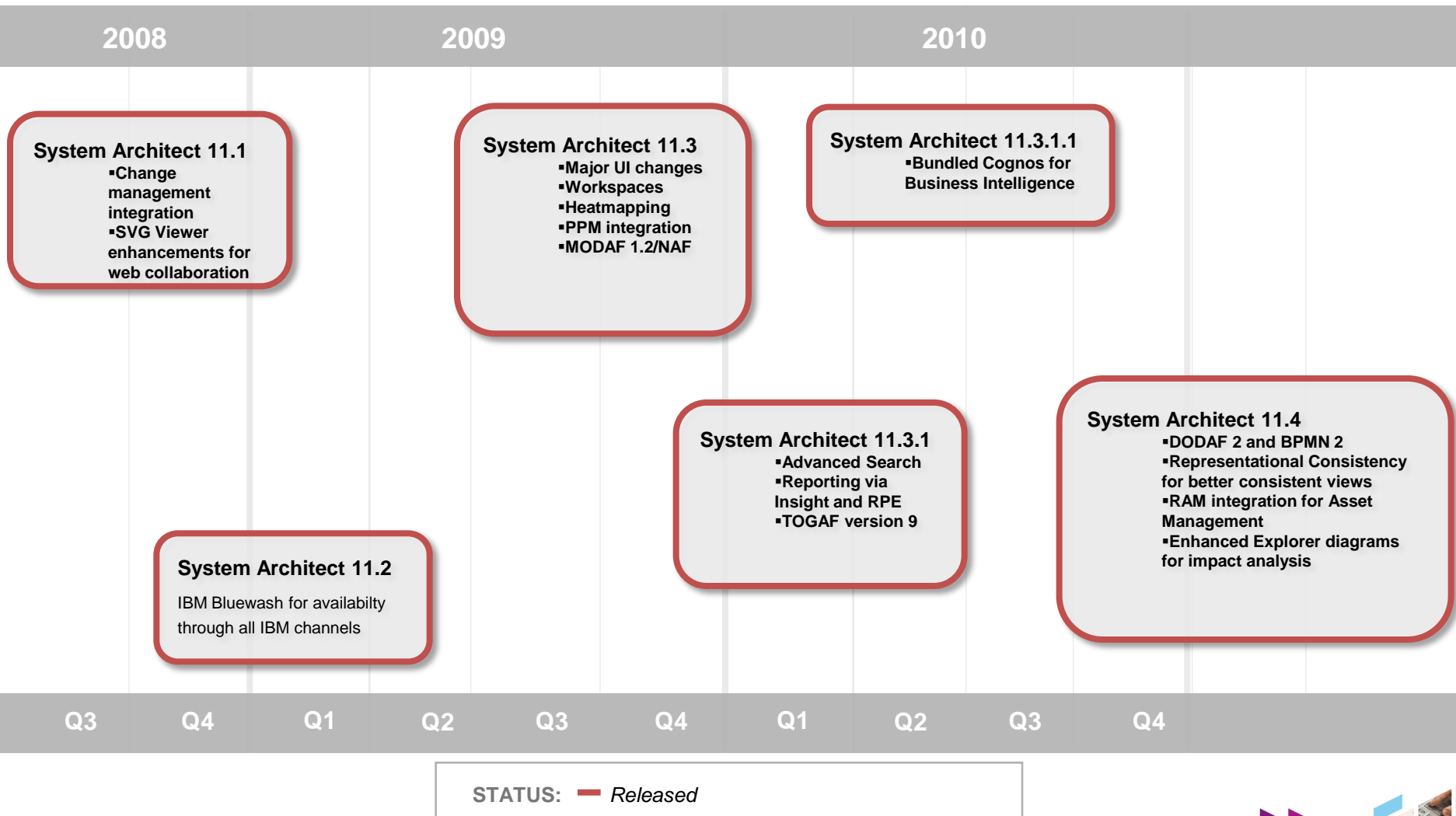
### Do all this using *jazz* services and philosophy

- Jazz is a platform for transforming software and systems delivery
- Service-oriented tools with loosely-coupled integrations making mashups and cross-product workflows more productive and flexible than ever

*Jazz provides a foundation for the planning and development Lifecycle*



# Recent Steps to Implement our Enterprise Architecture Strategy



# Theme: Major usability enhancements

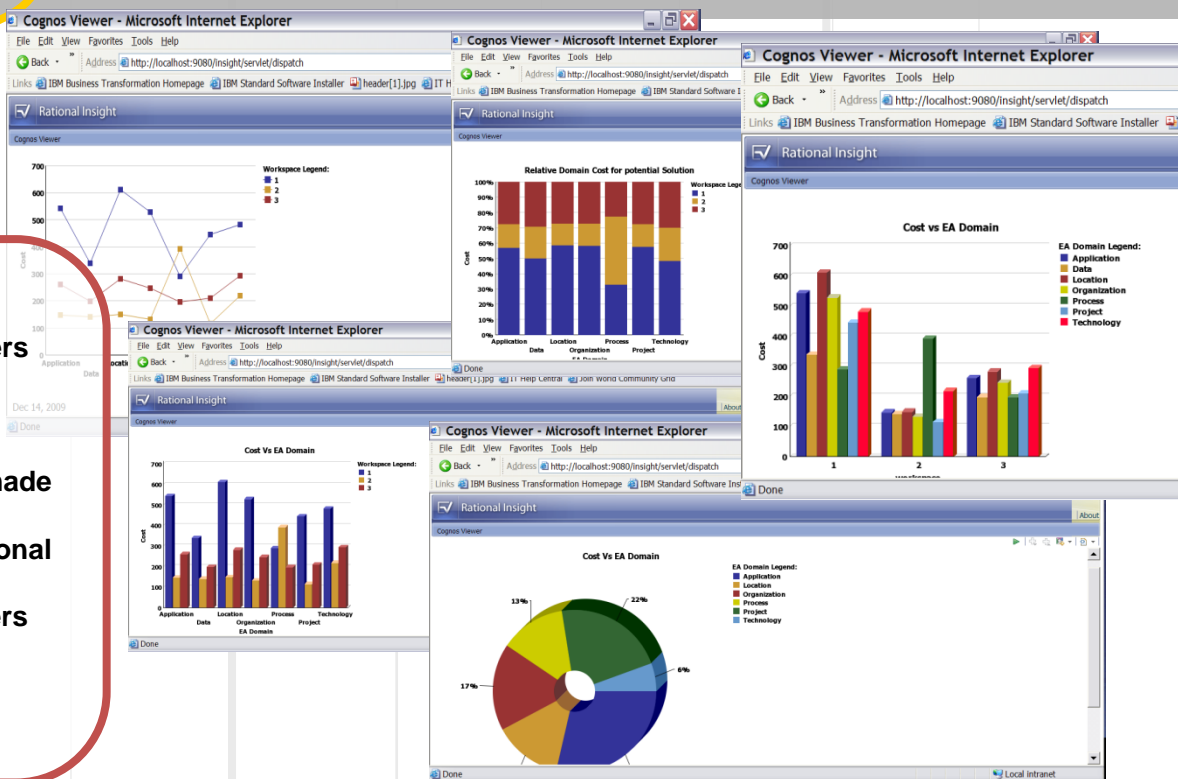
2008

2009

2010

## System Architect 11.3

- Higher productivity for SA desktop client users
- Easier transformation planning through workspace support
- Higher productivity in searching the models
- Customization of the meta model has been made easier with better user-interface
- Higher productivity for web users with additional functionality
- Productivity improvement for MoDAF 1.2 users
- Improved productivity in setting up and consuming analytics
- Support more web concurrent users on web server



Q3    Q4    Q1    Q2    Q3    Q4    Q1    Q2    Q3    Q4

STATUS: — Released



# Theme: Major usability enhancements

2008

2009

2010

The screenshot displays the IBM System Architect 11.4 web-based interface. The main window shows a Business Process Model (BPMN 2) for 'SALES CREDIT'. The process flow includes steps like 'Determine Applicant Eligibility', 'Initial Application Review', and 'Credit Report Required'. A 'Risk Assessor' component is also visible, showing a 'Risk Value' and 'Low Risk' status. The interface includes a 'Parent Diagram' pane on the left and a 'Functional Decomposition' tree on the right. A red rounded rectangle highlights the central content area.

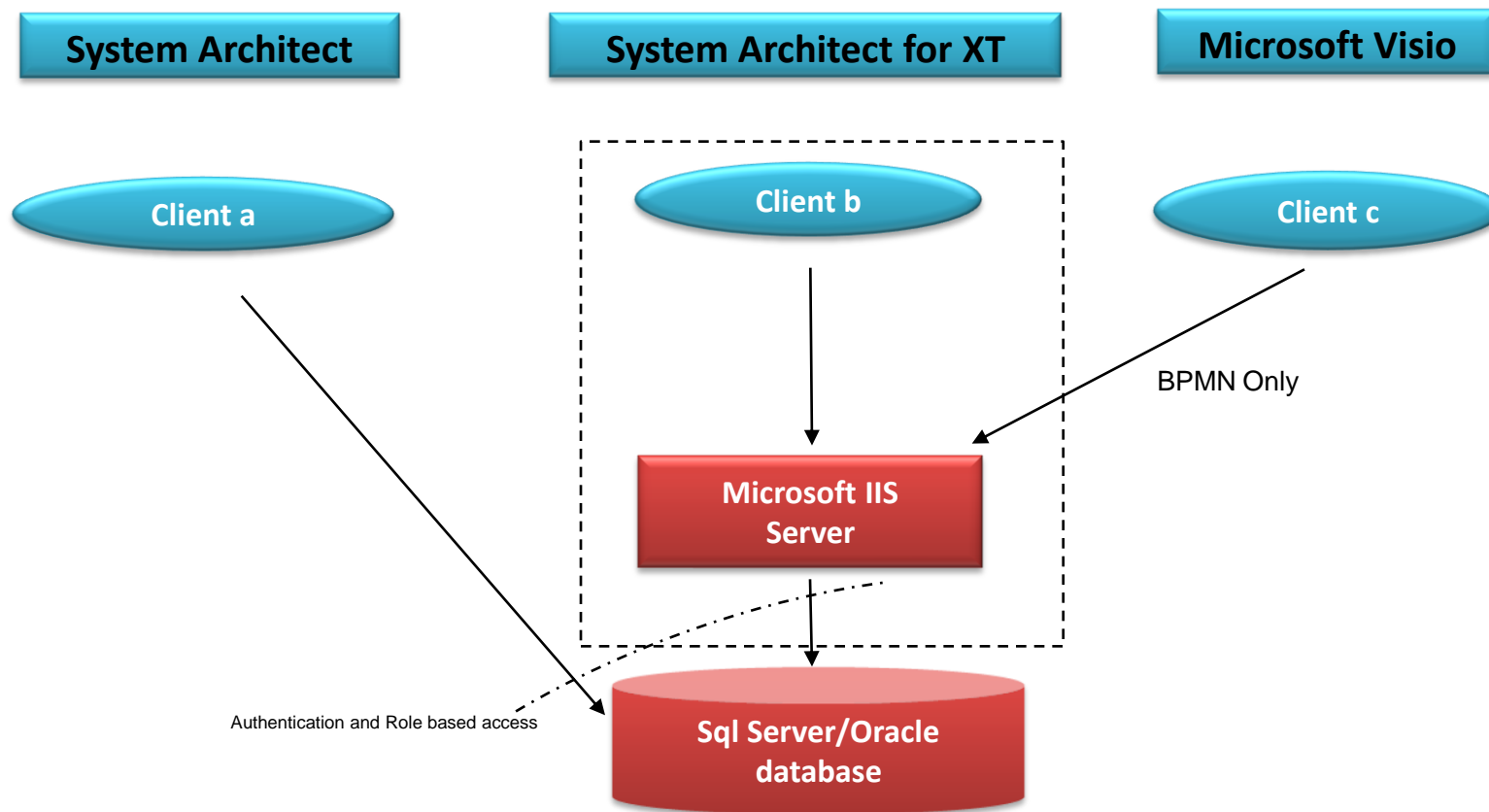
## System Architect 11.4

- Superior efficiency through automated model consistency
- Simple BPMN 2 modeling capability with filtering of complexity making analysts daily jobs easier
- Support for DODAF 2 with automated views saving on manual input of model content
- Management of EA artifacts as part of a corporate wide asset repository enabling better knowledge management
- Easier to use web capabilities on EA web platform
- Provision of more 'as is v to be' comparison capabilities for better decision making
- Visualization of complex relationships in a simple box in box model view makes understanding models easy

STATUS: — Released



# Today's High-level Enterprise Architecture 'Architecture'



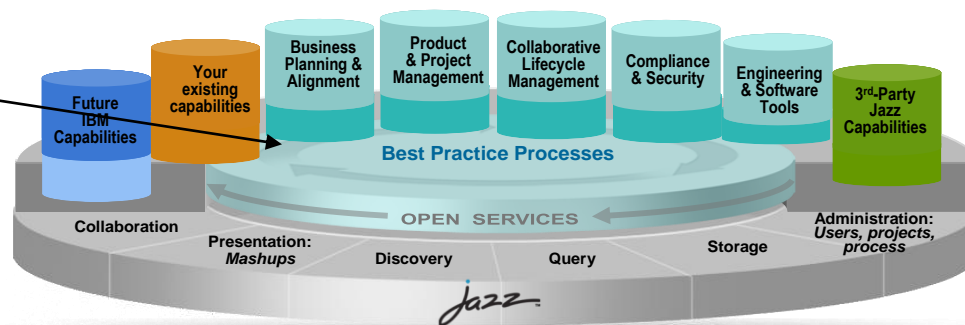
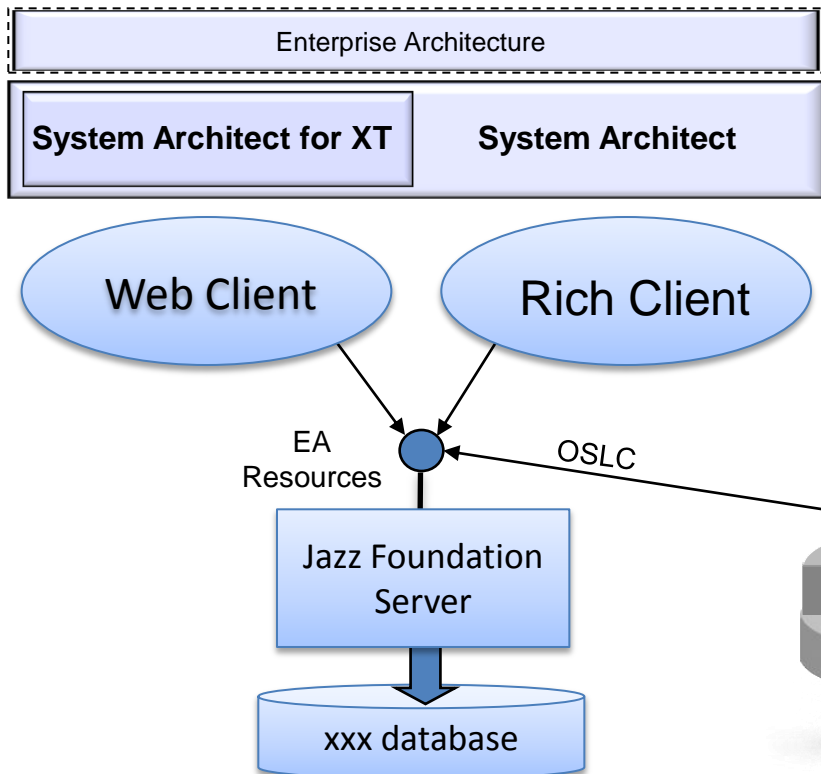
Three user interfaces for different users using different client technology

Using common repository specifically for Enterprise Architecture





# Enterprise Architecture Vision: Proposed Long Term Architecture

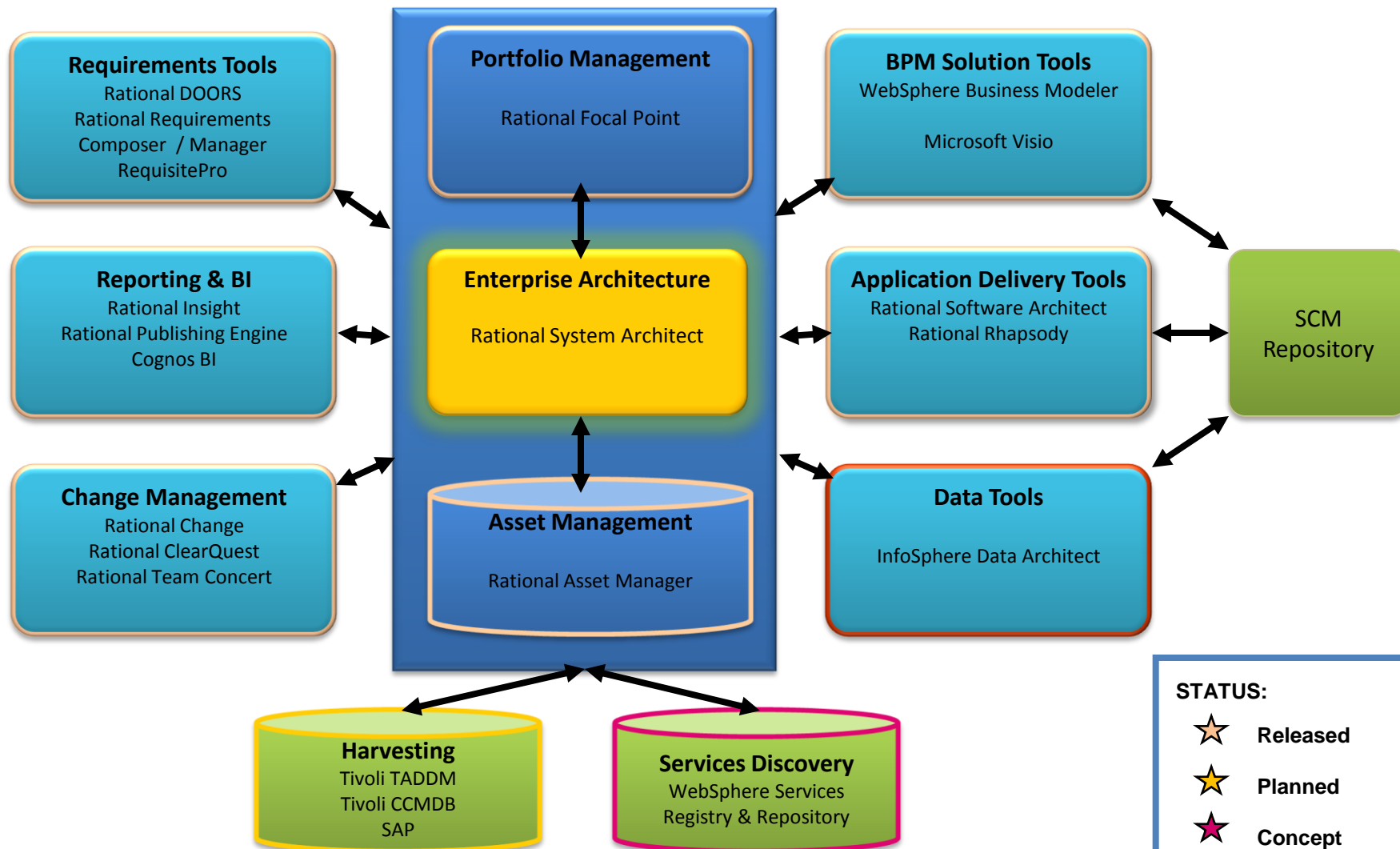


**Single product line**  
**Single Web client**

**Single server**  
**Interoperability**



# Enterprise Architecture: *Current and future integrations*





[www.ibm.com/software/rational](http://www.ibm.com/software/rational)

© Copyright IBM Corporation 2010. All rights reserved. The information contained in these materials is provided for informational purposes only, and is provided AS IS without warranty of any kind, express or implied. IBM shall not be responsible for any damages arising out of the use of, or otherwise related to, these materials. Nothing contained in these materials is intended to, nor shall have the effect of, creating any warranties or representations from IBM or its suppliers or licensors, or altering the terms and conditions of the applicable license agreement governing the use of IBM software. References in these materials to IBM products, programs, or services do not imply that they will be available in all countries in which IBM operates. Product release dates and/or capabilities referenced in these materials may change at any time at IBM's sole discretion based on market opportunities or other factors, and are not intended to be a commitment to future product or feature availability in any way. IBM, the IBM logo, Rational, the Rational logo, Telelogic, the Telelogic logo, and other IBM products and services are trademarks of the International Business Machines Corporation, in the United States, other countries or both. Other company, product, or service names may be trademarks or service marks of others.





IBM Software

# UK Innovate 2010

The Rational Software Conference

Smarter software for a smarter planet.

