

# Innovate2011

The Rational Software Conference

11th and 12th of October

Let's **build** a smarter planet.



## Rational solutions for SAP

- testing without blowing thousands of pounds!

**James Hunter**

**WW Strategy and Offerings Manager, IBM Rational**

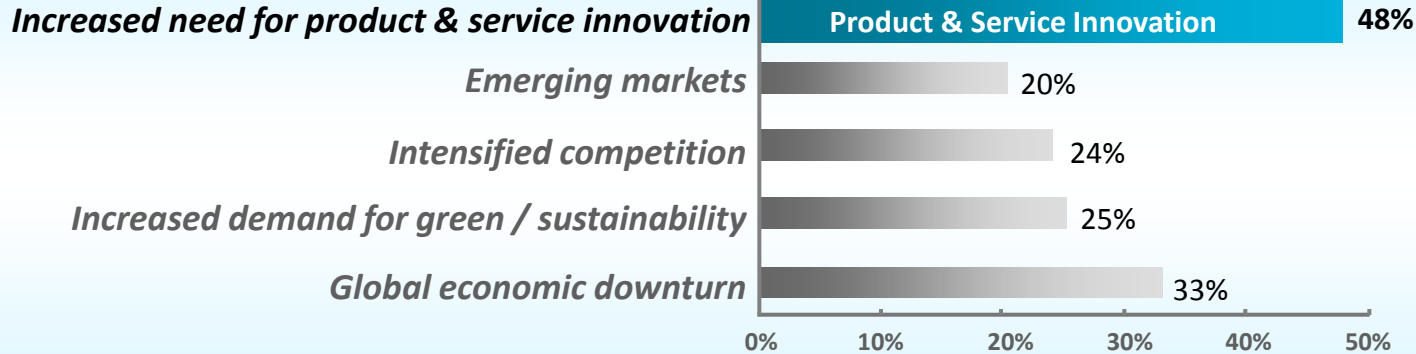


# Businesses are prioritizing cost-conscious innovation for growth

- High-growth CIOs are 94% more involved in driving business innovation than low-growth CIOs
- 55% of CIO time is spent on innovation



IBM



Source: IBM CIO Study, 2010; and *The Chairman's Series on Growth*, Frost & Sullivan, 2008.

Innovate2011

Software. Everyware.

# Realities can stall business process innovation

*Complexities in software delivery compounded by market pressures*



## Complex, Multi-platform Systems and Applications

**62%** of companies have agile projects requiring integration with legacy systems

## Increasing Regulatory Compliance Pressure

Driven by Safety and Compliance

## Globally Distributed Software and Product Supply Chains

**50%** of outsourced projects are expected to under perform

## Cost Reduction

**70%** budget locked in maintenance and **37%** of projects go over budget

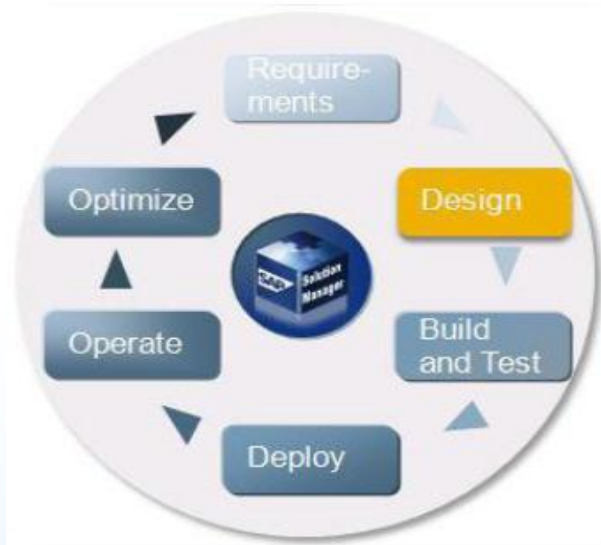
## Unpredictability in Software Delivery

**62%** of projects fail to meet intended schedule

## Changing Requirements and Time to Market

**30%** of project costs are due to rework and poor execution of requirements

# What's the pain



How do I align business requirements with IT requirements?



Can I coordinate IT changes across my heterogeneous systems & business processes?



Can I verify that my business processes have been deployed & tested?



How can I manage my SAP and non-SAP projects in a unified way?



# Three foundational aspects to transforming SAP delivery



SAP delivery

## **Integrate**

*Connecting process  
and information*

Software, data, and tools

## **Collaborate**

*Unifying teams*

Projects, and  
organizational cultures

## **Optimize**

*Simplifying governance*

Plans, scope,  
and measures

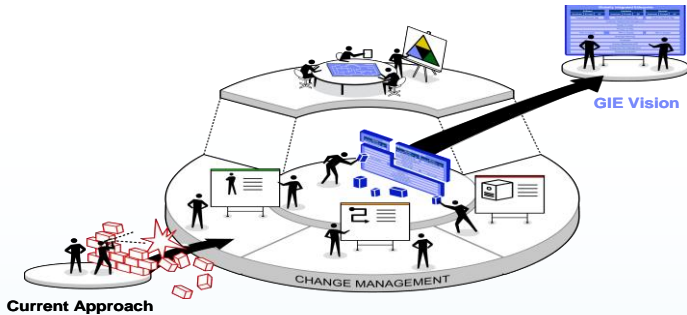
Innovate2011



Software. Everyware.

# IBM's Globally Integrated Enterprise

Enabled through SAP Solution Manager Integration and IBM Rational



## IBM Globally Integrated Enterprise

- Unify IBM operations, processes, and controls across multiple operating countries
- Optimize IBM's view of the customer
- Simplify & rationalize core business processes

## Run on SAP

- Key business application partner
- Global template across IBM operating countries

## Managed by IBM Rational

- Rational provides common governance platform for quality, change, and enterprise requirements management

## Powered by IBM Rational and SAP Solution Manager

- Integrated Quality Management and Change Management solution to deliver the governance needs of the IBM Globally Integrated Enterprise
- Allows IBM to deploy an effective unified lifecycle management process using the best practices of SAP and IBM Rational

Innovate2011

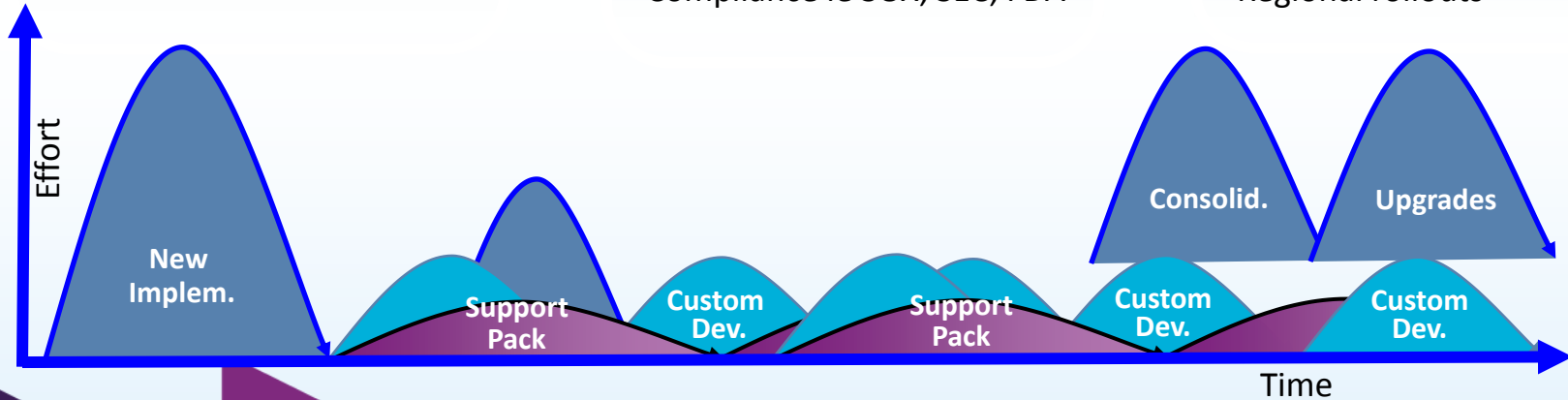
 Software. Everywhere.

## Dr. Uwe Hommel, Executive Vice President, SAP

“Our collaboration with IBM Rational brings together the best of our combined application lifecycle management market leadership and can help customers reduce costs, manage change, and improve quality across the enterprise applications lifecycle.”

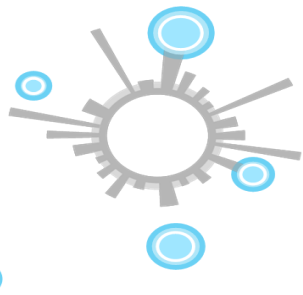


# Change is critical to business innovation





# IBM Rational solutions for SAP



[ibm.com/software/rational/solutions/sap](http://ibm.com/software/rational/solutions/sap)

- **Analyze and plan your SAP business transformation.**
- **Implement new SAP solutions.**
- **Add Application Lifecycle Management to your existing SAP development environment.**



**Rational System Architect**

**Rational Quality Manager**

**Rational Clearquest**

**Rational Performance Tester**

**Certify**

**Rational Appscan**



**Innovate2011**

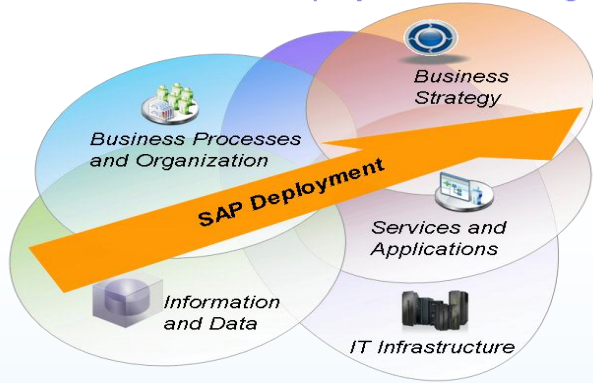


**Software. Everywhere.**

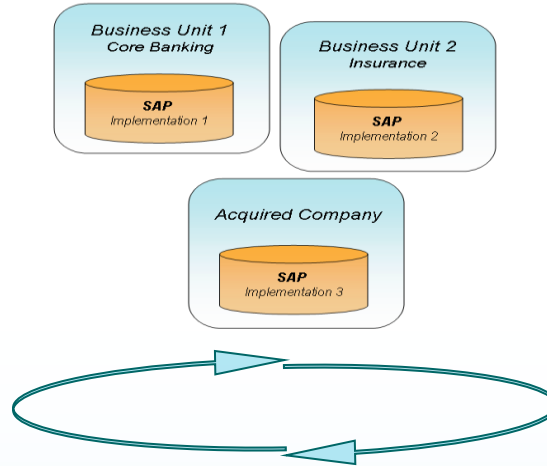
# Business planning is a critical lifecycle aspect of SAP in an organization



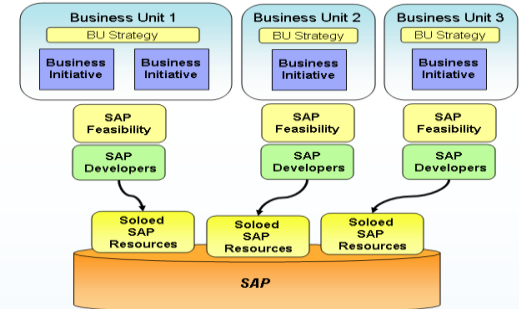
## Scenario 1 - ERP Deployment Planning



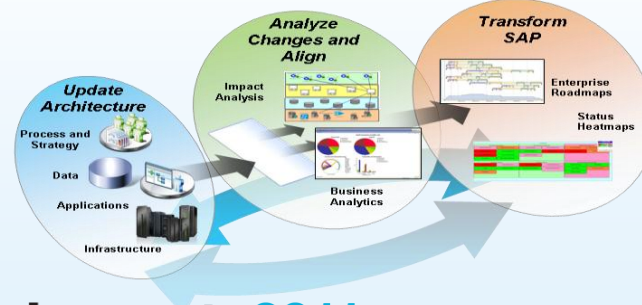
## Scenario 2 – Consolidating SAP deployments



## Scenario 3 – Developing Strategic SAP Applications



## Scenario 4 – Maintaining SAP Impact

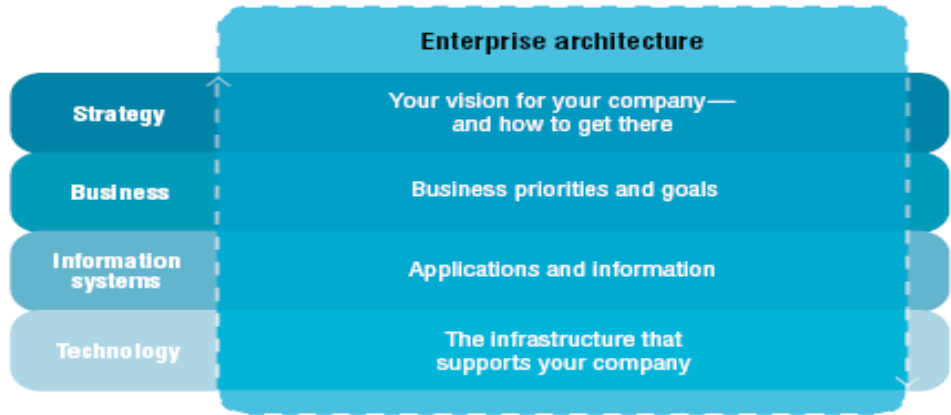


Innovate2011

# IBM Rational System Architect

## Rational System Architect

- Build dependencies between your processes in SAP Solution Manager and supporting SAP data and applications.
- Visualize, analyze, plan and communicate your SAP deployment on an ongoing basis to assure your investment in SAP attain maximum business impact.
- Use System Architect as a library of definitions to build detailed process flow models using the standard BPMN notation.



- Leveraged analytics to guide complex SAP rollout decisions.



# Cooperation between IBM and SAP



SAP and IBM Rational are collaborating on an integrated Lifecycle Management solution to support our joint customer needs by starting with an end-to-end Quality Management offering.

Innovate**2011**

 Software. Everywhere.

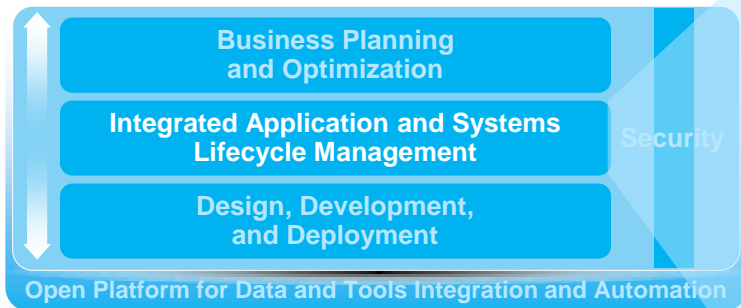
# Break down the silos of SAP delivery



## ***Value of integrated ALM***

*Integration of good practices across roles and teams*

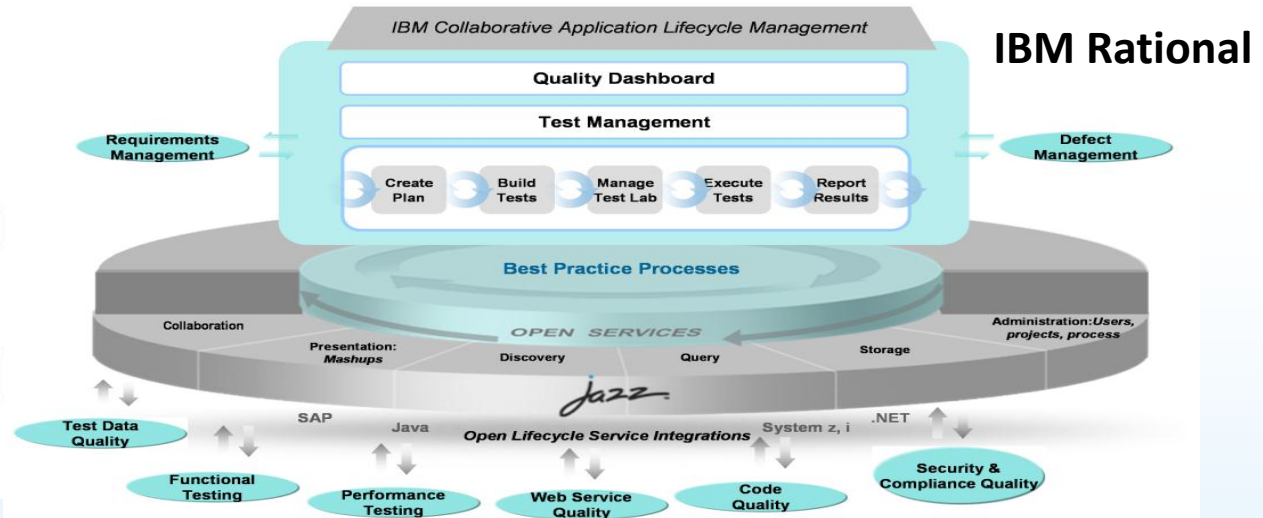
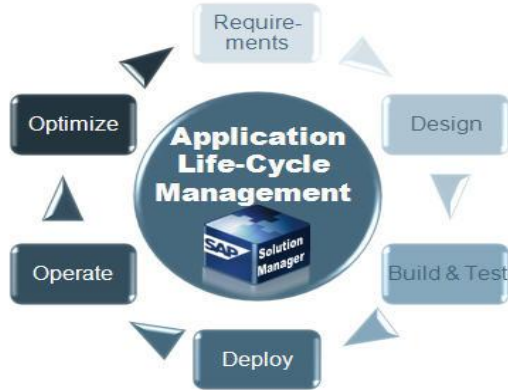
- Focus on innovation enabled by consistent process execution
- Implement new levels traceability and conformance
- Earlier architectural verification
- Quality management integrated up-front
- More reuse of components, architectures, process assets
- Improved team collaboration



# Application Lifecycle Management with SAP Solution Manager and IBM Rational

End-to-end Quality Management is a key element of effective Application Life-cycle Management to help lower costs and improve deployment success.

## SAP Solution Manager



# SAP Solution Manager – IBM Rational

New Quality Management option for SAP and IBM customers



## Functional View

- Import SAP Solution Manager Business Blueprint into Rational Quality Manager & RequisitePro
- Update test results into SAP Solution Manager
- Integrate with SAP Service Desk

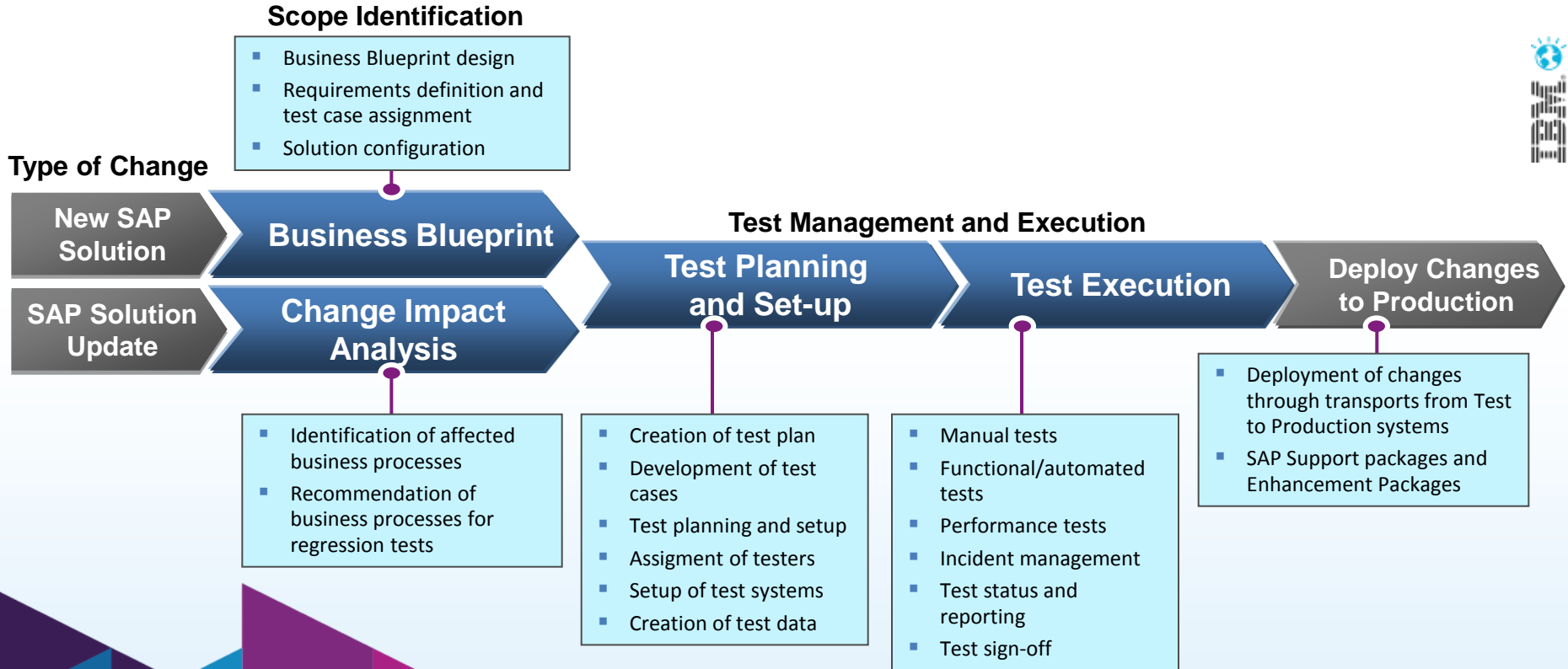
## Benefits

- Allows customers to combine SAP & IBM best practices & standards
- Combine SAP Solution Manager life-cycle management capabilities with IBM Rational's integrated governance and quality management capabilities
- Enables End to end business process testing
- Aligns enterprise architecture and requirements with SAP-centric Solutions

Innovate2011

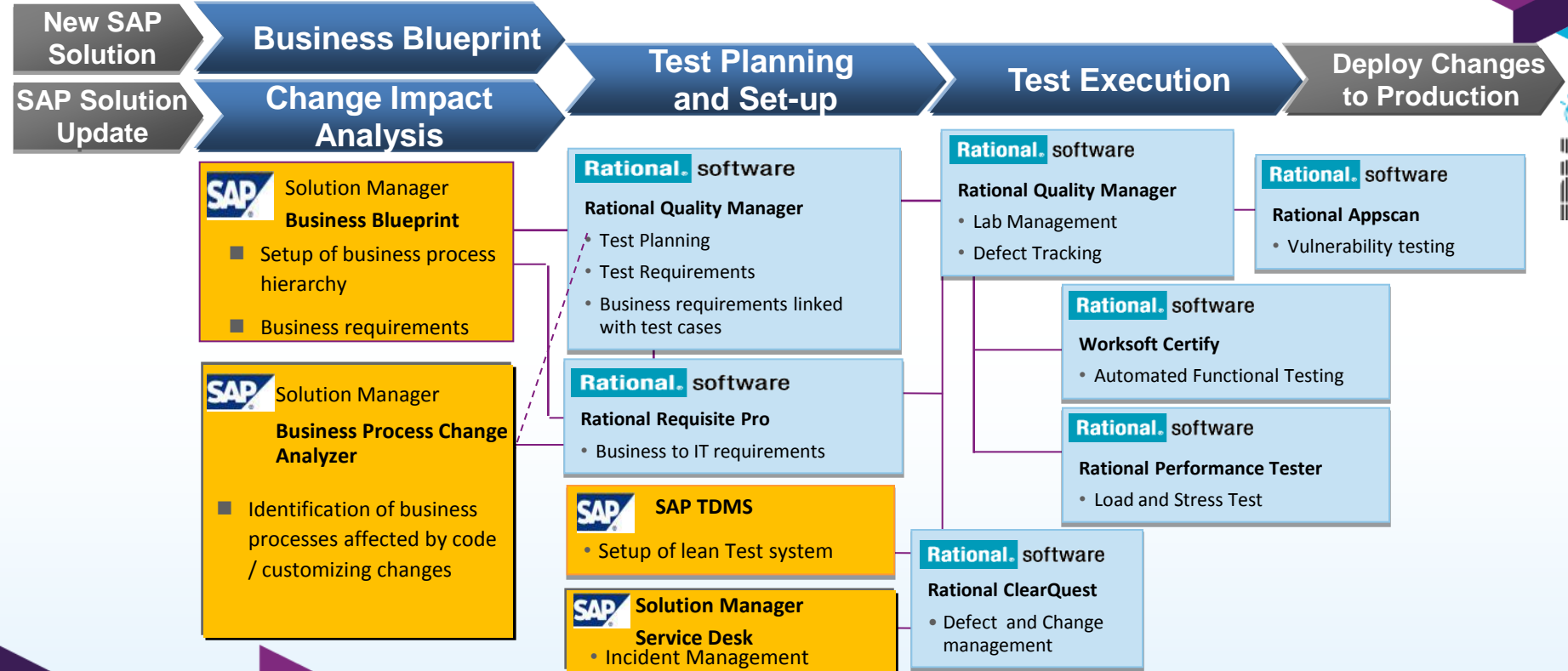
# Quality Management for SAP solutions

## End-to-end integration testing of SAP solutions





# Quality management of SAP solutions



# IBM Rational Quality Manager

## A central hub for business-driven software quality



### Mitigate business risk with collaboration

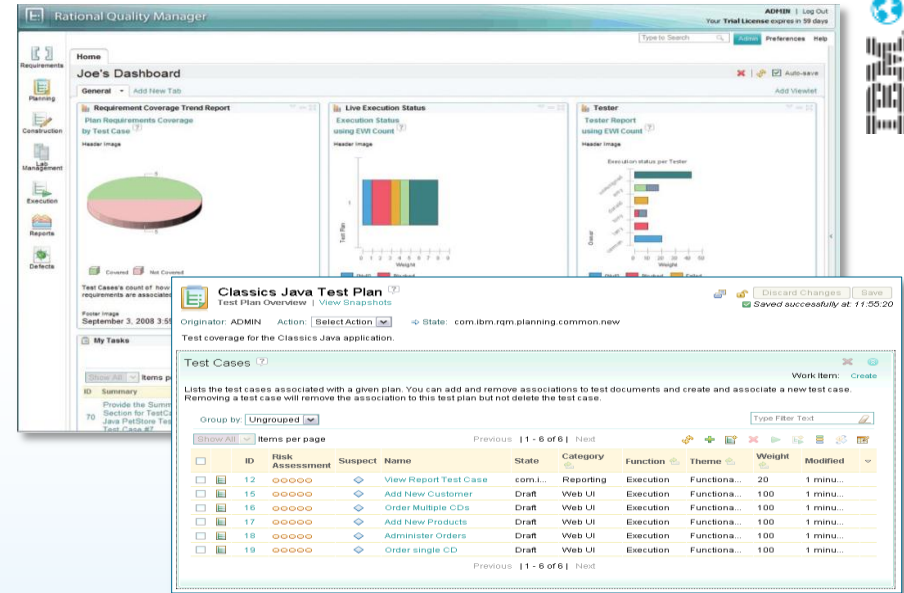
- Stakeholder and team coordination reduces mistakes
- Risk identification and management leads to educated prioritization decisions
- Test traceability linked to business requirements (including link with SAP solution blueprint) improves customer satisfaction

### Improve operational efficiency with automation

- Running tests earlier leads to reduced repair costs
- Running more tests in less time improves coverage
- Reducing manual labor leads to fewer testing errors
- Lab configuration automation improves efficiency and asset utilization

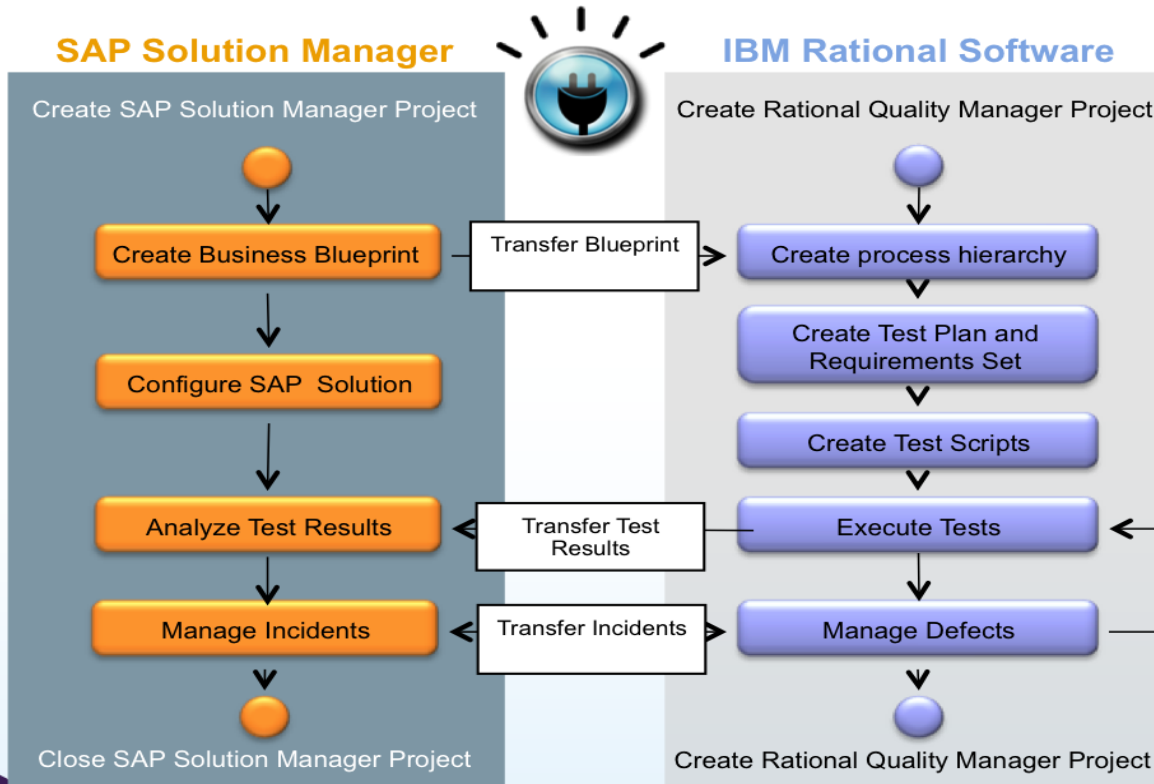
### Make confident decisions with effortless reporting

- Real-time dashboards enable proactive risk management
- Customizable reports facilitate ongoing process improvement
- Transfer test results back to SAP Solution Manager for consolidated project reporting



# IBM Rational Quality Manager

Rational Quality Manager

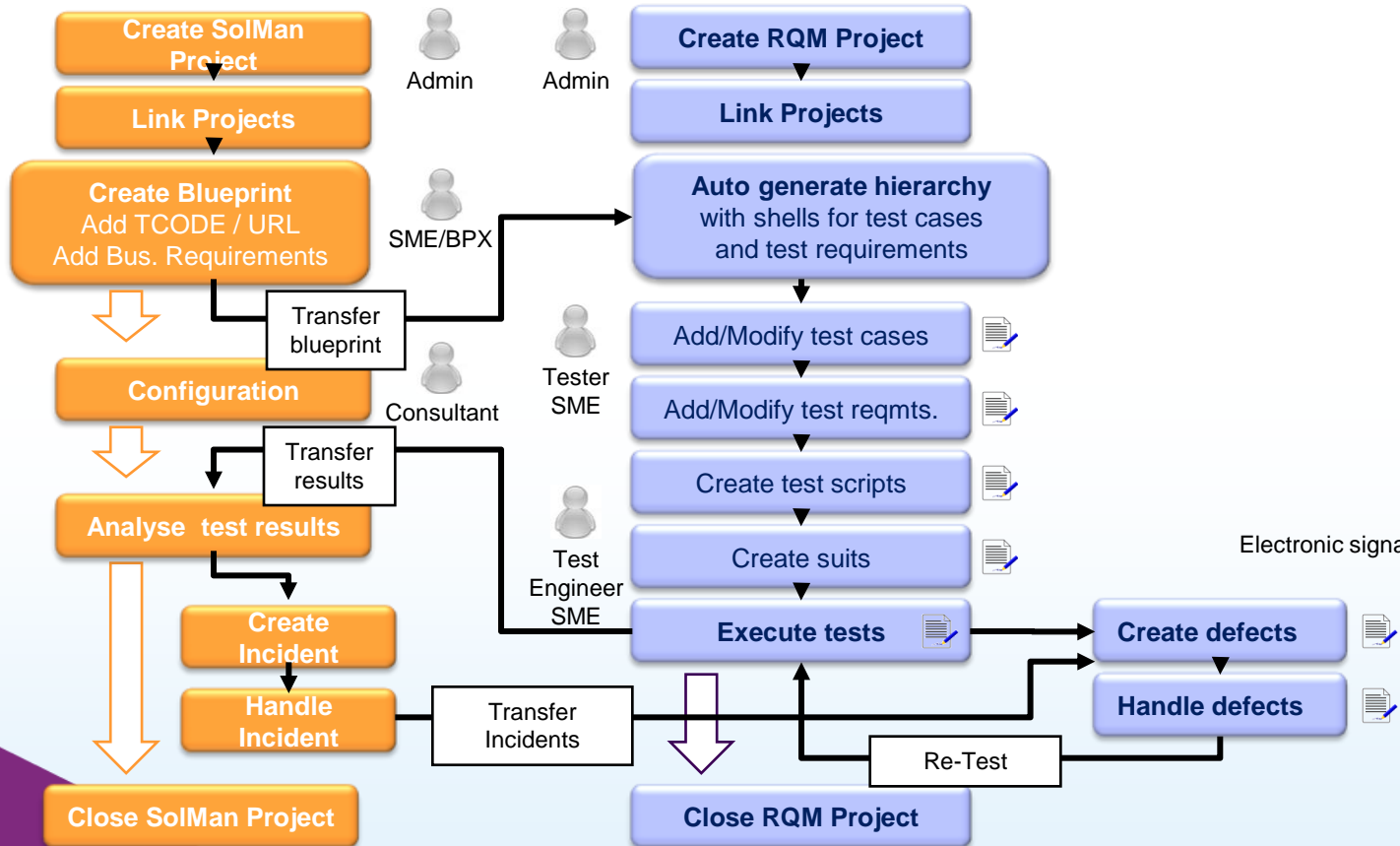


Use SAP Solution Manager 7.1 and Rational Quality Manager to ensure full test coverage for all relevant business processes.

Innovate2011

 Software. Everywhere.

# SAP Solution Manager – IBM Rational



## Automated functional testing solution for SAP



- Cross platform, script-less automation supporting end to end business process validation
- SAP optimized solution supports all SAP platforms
- Specialized SAP change identification and risk-based testing capabilities

# IBM Rational Performance Tester

Rational  
Performance Tester

## Improve quality

- Pre-deployment scalability testing that mimics the true end user experience.
- Easily read and edit tests with visual representation of SAP activity
- Easily capture all SAP transactions in SAP GUI or NetWeaver Portal through SAP recorder

**Reduce the cost** of scalability testing with reusable test scenarios that emulate a large population of users.

**Reduce the time** to develop performance tests with an easy to use, "no-code" test recording solution.

The IBM logo, consisting of the letters 'IBM' in a bold, black, sans-serif font with horizontal stripes.The SAP logo, featuring the letters 'SAP' in white on a blue rectangular background.

*“Rational Performance Tester is the best performance testing tool I have ever come across. The dedication and expertise of the IBM Rational support team was outstanding.”*

Peter Jäger, Senior Technology Consultant and Lead of SAP CoE

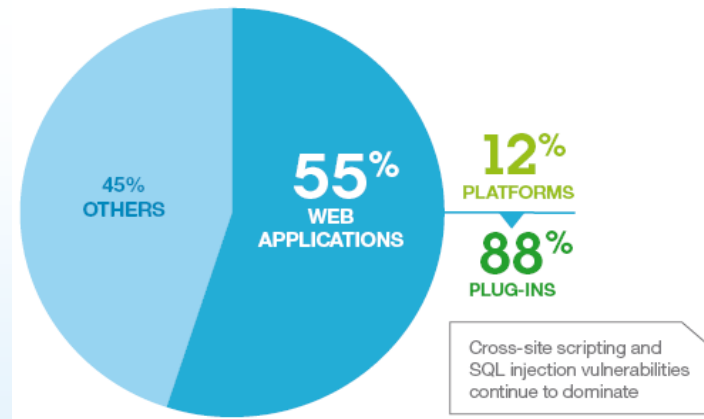
Innovate2011

 Software. Everywhere.

Extend security analysis across more testers in the application security process while employing multiple testing techniques .

- Scan SAP web-based applications
- Scan SAP Java code
- Scan SAP ABAP applications

Percentage of vulnerability disclosures that affect web applications and web application platforms and their plug-ins



# Integrated ALM for SAP and non SAP delivery



## Application lifecycle management

Manage the flow of people, process and information in an iterative cycle of software delivery activities that provides the foundation for continuous end to end measurable process improvement, ability to scale, and enhanced team collaboration, automation and reporting.

### Design management

Software and systems design, management, and governance with traceability across the lifecycle

### Build and deploy management

Automation of software and systems build and deployment

### Quality management

Test planning, creation and execution, ensuring the functionality, performance and reliability of software and systems

### Requirements management

Software and systems requirements elicitation, definition, prioritization and management

### Software change and configuration management

Planning, tracking and controlling of project schedules and resources, change requests, and software source versions





# Advantages of IBM Rational and SAP



## Requirements Management

- Link technical requirements with the defined business blueprint
- Integrate requirements across mixed application environments, including SAP and non-SAP systems

## Change Management

- Govern changes spanning SAP and non-SAP systems with confidence through defect tracking across projects, flexible workflows, and a consolidated view of change priorities, status and resources
- Manage compliance against governance mandates with features including audit trails and digital signatures

## Quality/Test Management

- Link test cases to business requirements for end-to-end requirements traceability
- Maximize productivity through test case prioritization and filtration of risk information by role
- Collaborate across the test lifecycle with role-based team interaction and live dashboards providing visibility on test performance
- Govern with immediate access to quality metrics, including traceability and history across test assets and automated test data gathering and pattern analysis

## Test Execution

- Simplify test authoring with natural language description and pictorial visualization of test actions
- Accelerate performance test development and execution with visual representation of tests, linkage to desired business service level agreements (SLAs), and automatic data correlation
- Effectively execute tests across disperse application environments and facilities

# Achieve breakthrough benefits with IBM



## IBM Rational solution

- Years of experience with client implementations built into our solutions and approach
- Open, standards-based platform to enabled cross-vendor integration
- Able to improve linkage between business priorities and objectives to outcomes
- Consulting and services to accelerate value and implement best practices, if needed

## Advantages over other approaches

OpenSource and point vendors	IBM provides an integrated lifecycle solution that enables cross-vendor integration unlike the vendors in this category
Vendors that integrate aspects of design, development & deployment, but not the whole lifecycle	IBM enables the integration and transparency needed across the full lifecycle unlike other vendors in this category
Vendors promoting comprehensive application and systems lifecycle solutions	IBM offers an open, standards-based platform unlike vendors in this category. IBM also enables business planning and alignment

# Highest scores for SAP offerings and strategy



## The Forrester Wave™ : SAP Services Providers, Q2 2011



"IBM is continuing its focus investment on developing truly innovative, game-changing solutions, including its long-term partnership with IBM Research and Development and SAP R&D to develop solutions to clients' complex business problems and accelerate time-to-value." Liz Herbert, Forrester, Q2 2011

The Forrester Wave:  
SAP Services Providers,  
Q2, 2011



# IBM Rational solutions for SAP

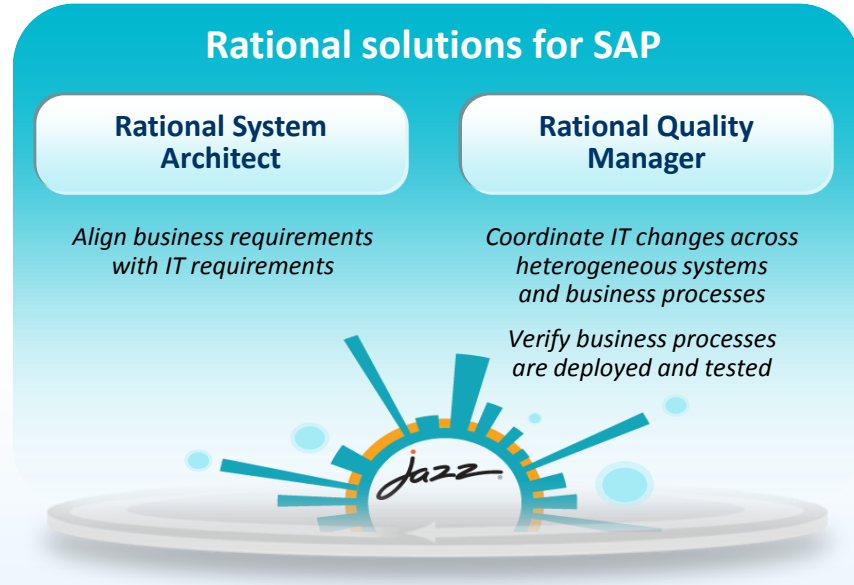
*Manage SAP and non-SAP projects in a unified way*



## Analyze and plan business transformation using SAP

- Ensure large SAP investments, implementations align with business priorities and strategy
- Save resources by preventing siloed and overlapping SAP implementations
- Maintain the impact of SAP deployments by transforming applications to keep pace with business change

**Implement SAP solutions by adding Application Lifecycle Management to your existing SAP development environment**



# Resources

- **Collaborative Lifecycle Management on Jazz.net**
  - Learn about the latest releases and features, participate in the forums, watch recorded videos of the solution in action. ([link](#))
- **Agility@Scale eKit**
  - Download the Forrester Agile Wave and get a wealth of resources for improving team flexibility and responsiveness. ([link](#))
- **ALM Buyer's Guide**
  - Explore objective criteria you can use to evaluate ALM solutions. ([link](#))
- **ALM Value Estimator**
  - In just five minutes, determine how much money you can save your organization with Rational ALM solutions. ([link](#))
- **ALM Everywhere eKit**
  - Download the Gartner MarketScope on ALM and get a wealth of resources for improving team productivity. ([link](#))



# Contacts

**Rational** software | [ibm.com/software/rational/solutions/sap](http://ibm.com/software/rational/solutions/sap)

**James Hunter** Worldwide Strategy and Offerings Manager, IBM Rational

- [james.hunter@uk.ibm.com](mailto:james.hunter@uk.ibm.com)
- +44 7961 336033



Innovate2011

 Software. Everywhere.