

Innovate2011

The Rational Software Conference

11th and 12th of October

Let's **build** a smarter planet.



Rational Collaborative Development Platform for zEnterprise

Keith Allen

Rational Brand Architect – Z Specialist



WELCOME

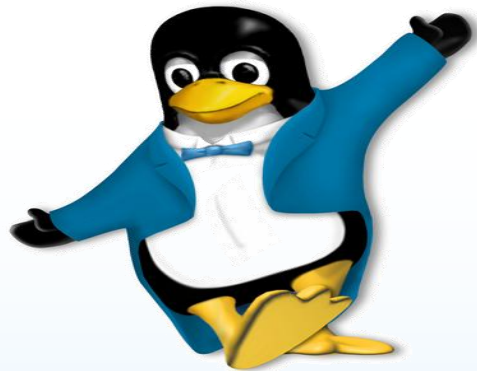
Bienvenido

Välkommen

Welkom

Bienvenue

Tervetuloa



velkommen

Bem-vindo

ברוך הבא

Willkommen

Benvenuto



Paper Abstract:

This paper explains the Rational collaborative development platform for zEnterprise, showing how, starting with integration to existing mainframe legacy technologies such as CA Endevor / Serena Changeman, the collaborative team and code management views, whilst retaining mainframe skills already in use, is providing new added values to developers. Savings in mainframe MIPS, are one of the many areas, that an organisation see, however the increase in application development time, and increase in application quality, drive new applications through the life cycle faster, and hence enable customers to bring these new applications to market sooner, with reduced cost. So supporting standard mainframe 'waterfall' practices, whilst introducing newer 'Agile' practices help in these improvements. This paper provides the listener to see how they can, via the Rational solution, move forward with knowledge that old and new development structures are retained.



We already have active Customers

ING  DiBa

HypoVereinsbank

FIDUCIA 

HSBC 
 Bayern LB



 **kfw**
BANKENGRUPPE



CREDIT SUISSE 

COMMERZBANK 

 dwp bank

sparkassen Informatik | 

ITERGO
Informationstechnologie GmbH

Danske Bank

 **Karlsruher**

 UniCredit

kreditwerk 

 **wüstenrot**
württembergische

Helaba | 
Landesbank
Hessen-Thüringen

Schwäbisch Hall 
Auf diese Steine können Sie bauen

Innovate2011

Rational Collaborative Development Platform for zEnterprise

Overview



Challenges faced in enterprise software delivery



Decades of application investments



“We don’t understand the effort, risk and impact of modernizing our legacy applications.”

- Maintenance costs are high (70%-80% of budget), as are development costs
- Assessing the scope and impact of a change is time consuming and error prone

Poorly integrated teams



“Our teams on different platforms are struggling to communicate. How do we collaborate in the context of our work?”

- Silos of developers, tooling and processes for different platforms
- Processes are often manual and time consuming to enforce

Islands of skills, languages and platforms



“Our skills gap keeps growing. How do we stay current with all the language and technology changes?”

- Low developer productivity from non integrated, green screen tools
- 80% of mainframe developers are 50+. Green screen tools inhibit younger talent from becoming mainframe developers

Aging and overloaded infrastructure

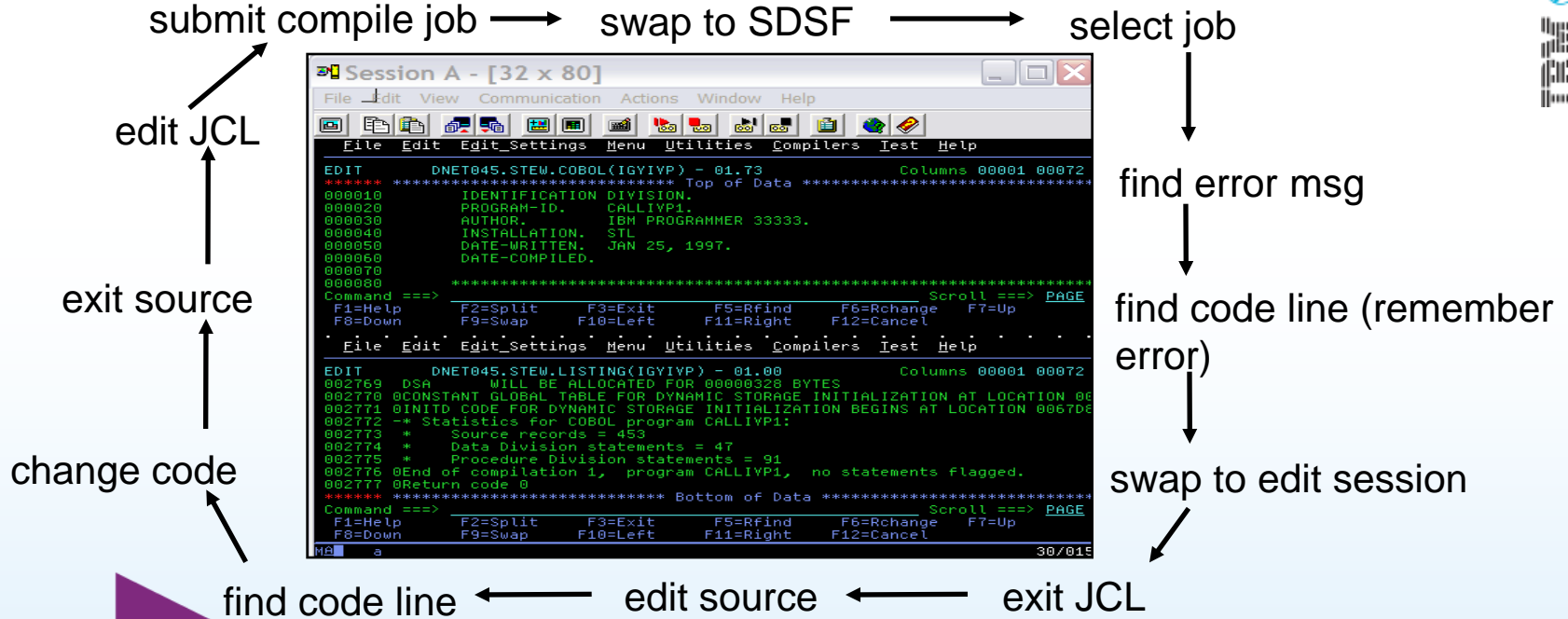
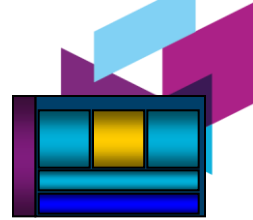


“We need a cost effective way to improve our infrastructure efficiency and free up capacity to handle more volume”

- Project delays due to waits on mainframe cycles or operations staff
- Pressure to reduce development MIPS costs

ISPF-based development

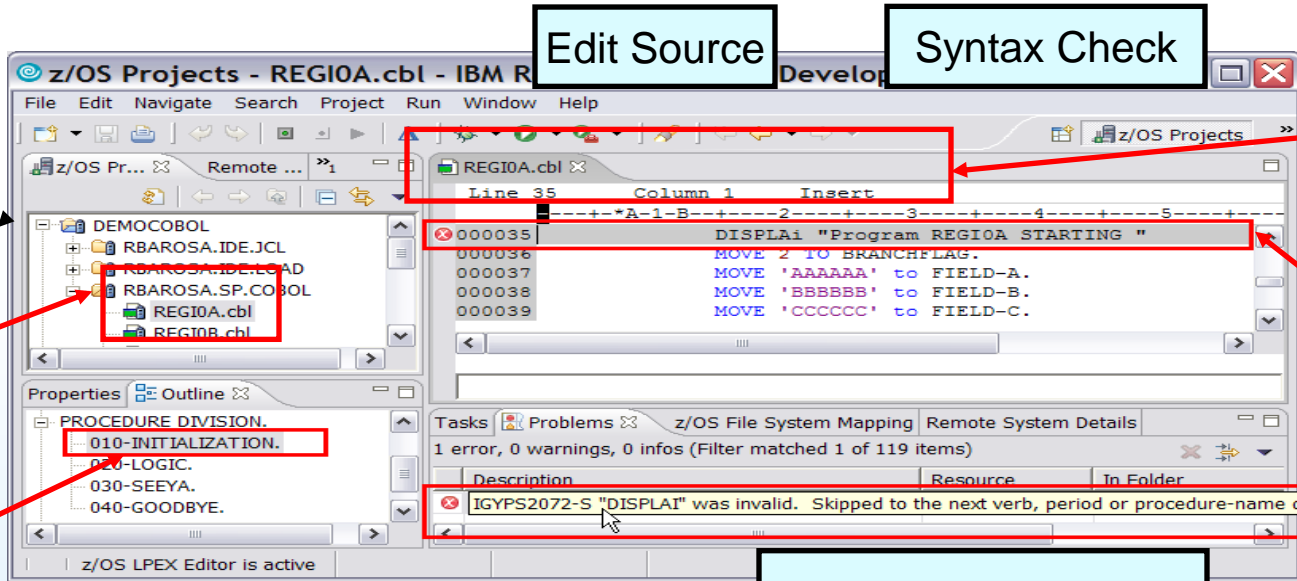
- Multiple screens/sessions and disparate tools
- 20 x 80 characters of content



To This.....

Common development environment for COBOL, PL/I, C/C++, and Java

Simplified development with more information at your fingertips



Open and edit multiple source and JCL members simultaneously

Statement in error indicated in source

Error list in Problems view

Submit jobs, access job output, or open source members with a single click

Outline view presents COBOL structure

Double-Click on the Error

And Provide This.....

Rational Executive Dashboard – the end game



Application Data Sources

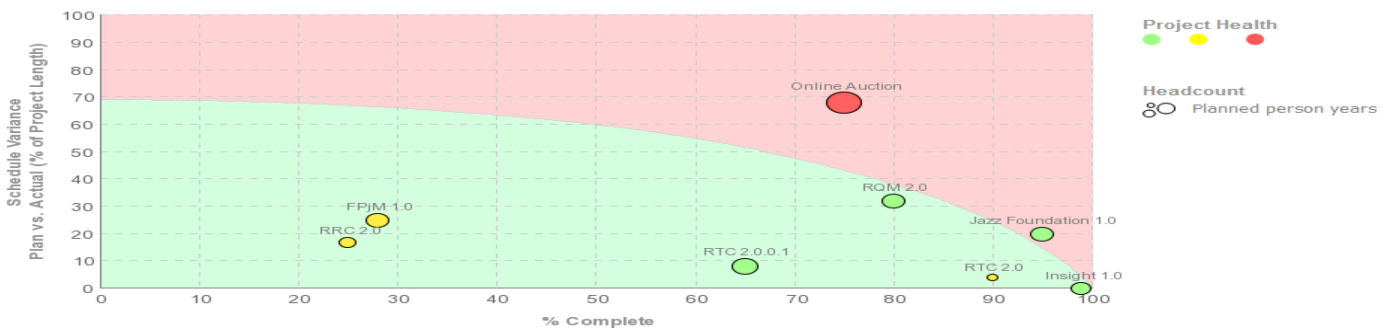
3rd Party Data Sources

Innovate2011

Rational Executive Dashboard – The end game

- Executive Dashboard
- Headcount
- Improve Project Health
- Achieve Profit Margin Objective
- Improve Market Share

Segment:



Hide Table

Segment	Product	Revenue Year-To-Date (M)	Revenue % of Plan	Pipeline (M)	Release	eGA Plan	eGA Outlook	eGA Plan- Outlook	Headcount (PY)	Project Health	Overall Profit Margin	Overall Market Share
Application Lifecycle Management (ALM)	Jazz Foundation	75.7 ▼	96% ▼	87.9 ▼	Jazz Foundation 1.0	May 28, 2009	Jun 12, 2009	15 days	52 ◊	71% ◊	◊	▲
	RTC	115.2 ▲	99% ◊	109.6 ◊	Online Auction	Mar 31, 2009	Jul 7, 2009	98 days	118 ▼	50% ▼	▼	▼
					RTC 2.0	Jun 15, 2009	Jun 19, 2009	4 days	12 ◊	90% ◊	◊	▲
Governance Solution	RTC 2.0.0.1	29.1 ◊	93% ◊	84.2 ▲	RTC 2.0.0.1	Sep 22, 2009	Sep 30, 2009	8 days	72 ▼	86% ◊	◊	◊
	Focal Point for Project Management				Oct 15, 2009	Nov 17, 2009	33 days	60 ◊	74% ▲	◊	◊	
Quality Management (QM) Solution	Rational Insight	108.7 ▼	98% ▼	162.7 ▼	FPJM 1.0	May 26, 2009	May 26, 2009	0 days	40 ◊	83% ▼	▼	◊
	RQM	35.2 ▲	112% ▲	79.6 ▲	RQM 2.0	Jun 15, 2009	Jul 31, 2009	46 days	56 ◊	89% ▲	◊	▲
	RRC	28.1 ◊	83% ▲	45.1 ▼	RRC 2.0	Nov 4, 2009	Nov 24, 2009	20 days	32 ▲	85% ◊	◊	▼

Project Health by Country



ISPF has provided consistent tooling for decades...but it is limiting

Drawbacks - As seen my management:



- Constant connection to mainframe is required
- Development shares machine with production use; gets lower priorities
- Inability to create cross-platform components
- ISPF green screen UI is unappealing to new younger hires
- MIPS usage for development vs. production usage

**Adopting a 'Factory IT'
Approach with the Rational
Collaborative Development
Platform for zEnterprise.**





From Demand of the Business

Demand & Portfolio Mgt

Project Management

Resource Management

Financial Management

Time Sheet Management

Software Configuration Management

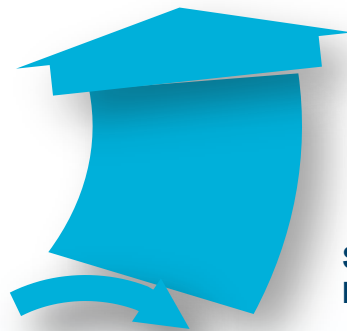
IT Service Lifecycle

Desktop to Mainframe
Physical to Virtual
In-house to Cloud

Develop

Release Mgt

To Service to the Business



Service Level Management

Service Assurance

Security Management

Service Management

Datacenter Automation

Operate

Asset Management
Cost Management

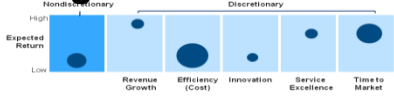
Request Management
Provisioning

Innovate2011





Align to the Business

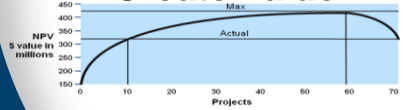


Stay in Business

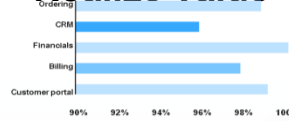


The Five Essential Value Metrics For Managing IT

Create Value



Realize Value



Remove Waste



Demand & Portfolio Mgt

Project Management

Resource Management

Financial Management

Time Sheet Management

Software Configuration Management

Release Mgt

Request Management Provisioning

Asset Management Cost Management

Datacenter Automation

Service Management

Security Management

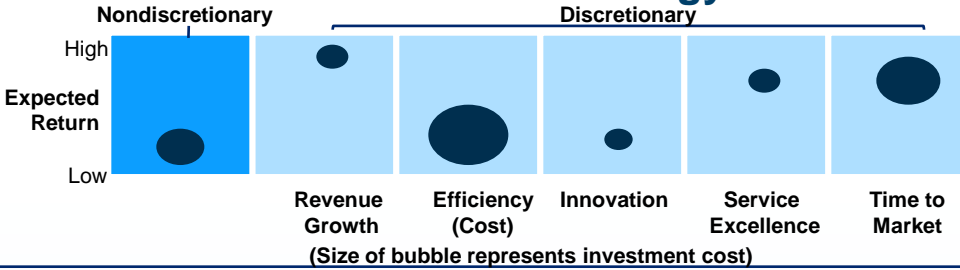
Service Assurance

Service Level Management

Innovate2011

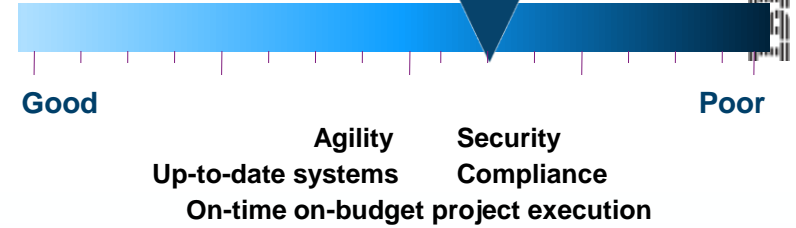
Align to the Business

Alignment Of IT Investments to Business Strategy



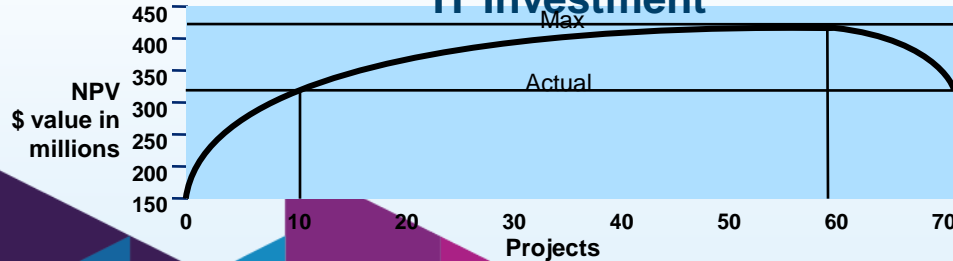
Stay in Business

Operational Health



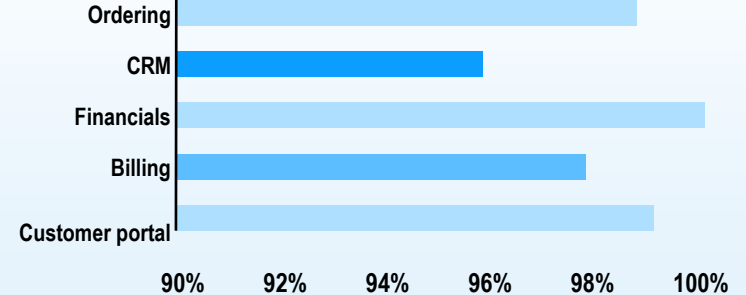
Create Value

Cumulative Business Value of IT Investment



Realize Value

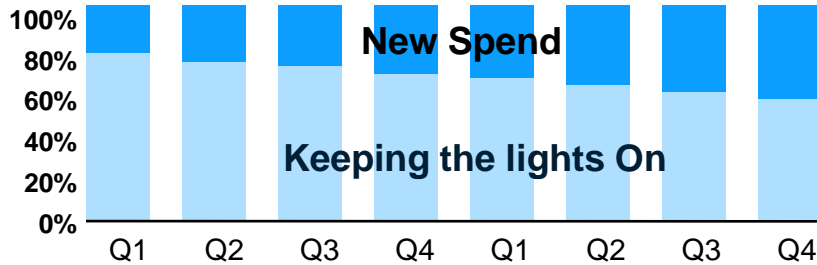
SLA Performance



Innovate2011

Remove Waste

IT Spend Ratio



Examples of the Rational Collaborative Development Platform for zEnterprise Impact.

- Reduce service desk calls up to 40%
- Improve MTTR up to 50%
- Reduce downtime up to 70%
- Reduce performance delays up to 71%
- Improve staff productivity up to 25%
- Reduce number of IT tools up to 50%

Elements of Waste

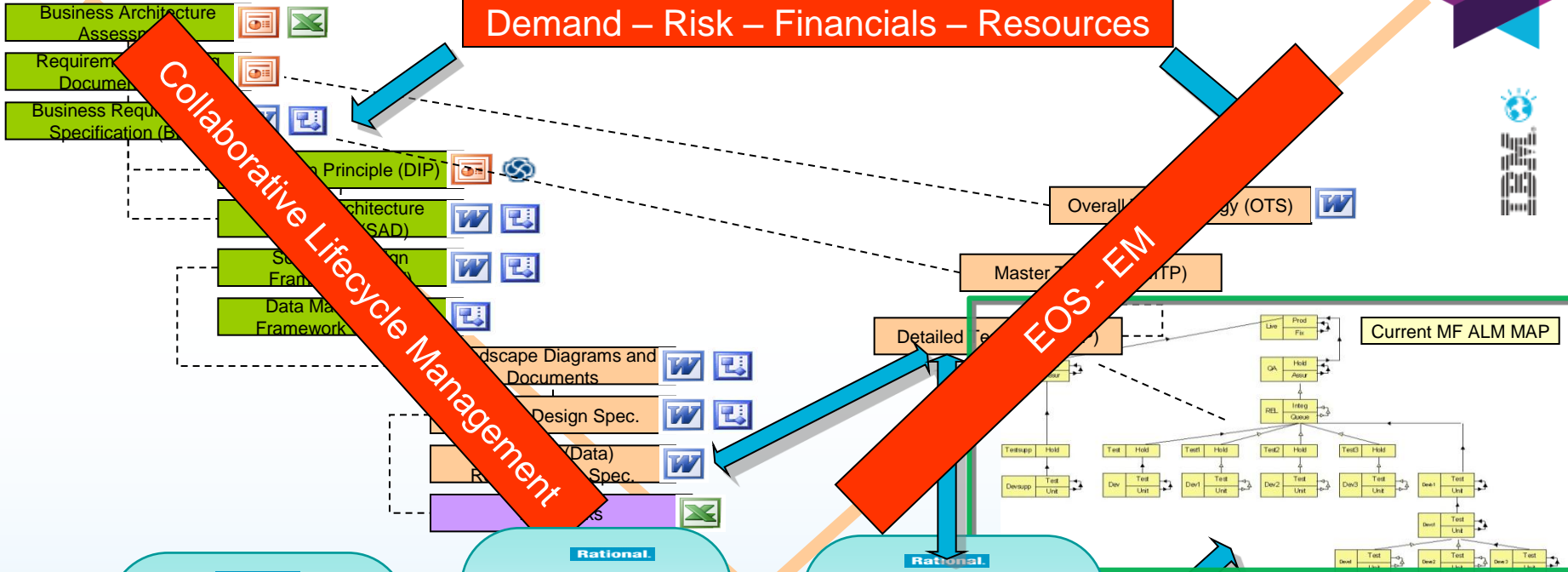
- Incidents
- False alarms
- Server sprawl
- Underutilized resources
- Duplicate licenses
- Manual activities – human error
- Redundant applications
- Slow application response times
- Electricity usage of idle systems

Helping the Alignment of IT to Business

Demand – Risk – Financials – Resources

Collaborative Lifecycle Management

EOS - EM



Rational.

Requirements metrics

Future IBM Capabilities

Your existing capabilities

Rational.

Metrics Reporting

Business Planning & Alignment

Product & Project Management

Collaborative Lifecycle Management

Compliance & Security

Rational.

Team Collaboration Across the development.

Engineering & Software Tools

3rd-Party Jazz Capabilities

Rational.

Quality and Test Management

Best Practice Processes OPEN SERVICES

Administration: Users, projects, process

Collaboration Presentation: Mashups Discovery Jazz Query Storage



A Unified Development Process

Team support for:

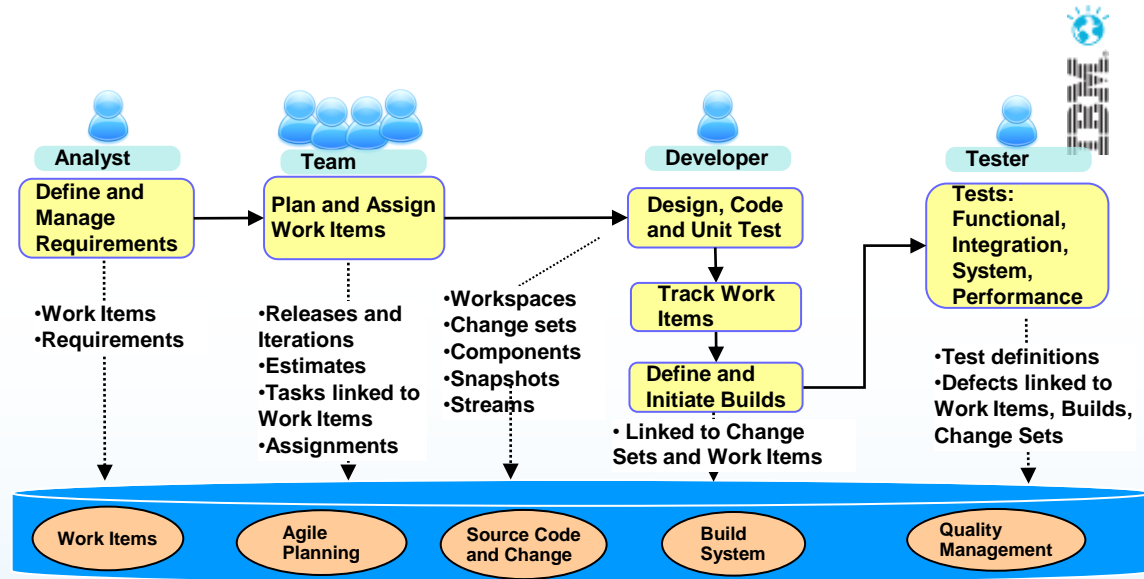
- Repository
- Team Processes
- Collaboration
- Project tracking
- SCM support

Same tool for z/OS, Linux on System z, AIX, and Linux

A single User Interface to manage development for all environments

- Browser or Eclipse client

Coexistence with existing mainframe based SCMs



Common repository and data schemas for all environments

Complete set of System z Development and Test capabilities from an integrated development environment



Integration with Rational Team Concert for Lifecycle and Source Management



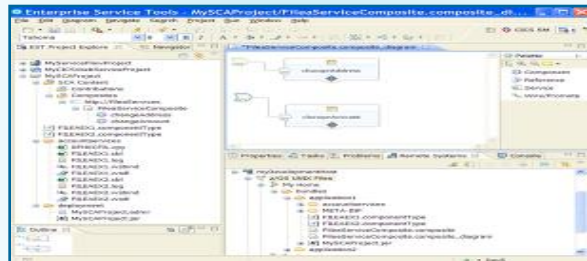
Integration with Rational Asset Analyzer for Application Understanding and Impact Analysis



Integration with Fault Analyzer for Dump Analysis



Rational Collaborative Development Platform for zEnterprise



A modern IDE for productive development of cross-platform applications written in COBOL, PL/I, ASM, Java, EGL or C/C++ in System z CICS, IMS, DB2, Batch applications

Access to typical System z sub-system functionality in z/OS, CICS, IMS, DB2, WAS



Integration with IBM Debug Tool for Development and Test



Integration with IBM File Manager for file and test data handling



Integration with Rational Developer for system z UT for flexible access to System z environment



Analyzing applications



- **Quickly understand flow and relationships across the enterprise even with little or no documentation**

- Analyze, understand, and navigate complex application source code, including COBOL, PL/I, C/C++, Java, JEE, etc...

- **Reduce time to market & risk of resource shortage by understanding the impact of change, upfront**

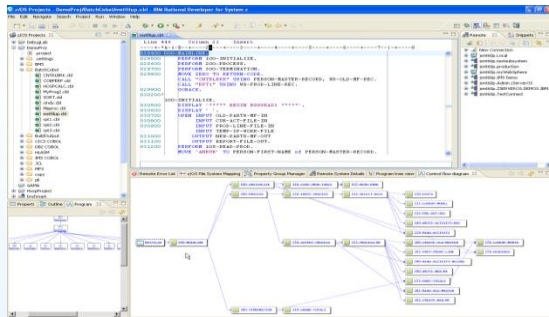
- Understand source code complexity/fragility
- Analyze impact of potential code changes or database changes
- Find “dead code” for deletion from source base

- **Choose from two user interfaces for ease of access and use**

- Integration with Rational Developer for System z for IDE users
- Browser-based user interface for dashboard and complex query construction

- **Provide business rule identification and capture (implementation not part of solution)**

- Extend RAA “vocabulary” to map business terms and properties to those used by developers
- Leverage RAA's capabilities to find where rules are encoded in the COBOL source
- Export results in formats consistent with ILOG BRMS technologies



Develop applications more productively...

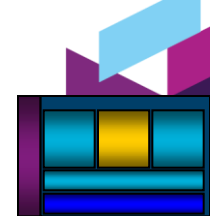
Work with existing host resources in a workstation environment

Integrate development with change management

Experience productivity gains with modern development tools

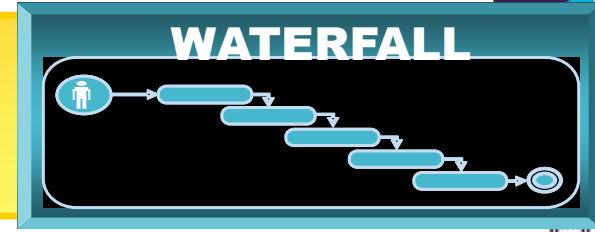
- Quickly perform mundane tasks
- Generate code
- Code assistance and templates

Ensure proper governance of application development

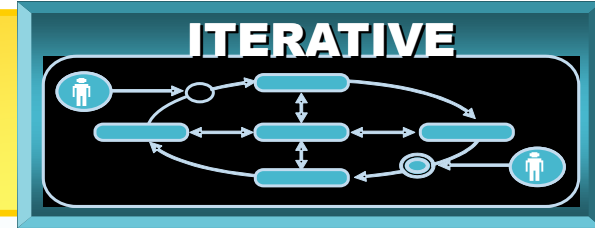


Helps select the right approach for the Mainframe

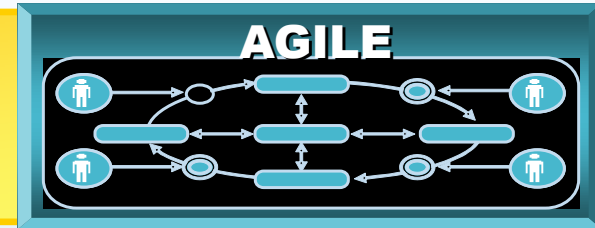
§ Waterfall development
When *stability* is the primary driver



§ Iterative development
When *stability and change* are equal players



§ Agile development
When *change* is the primary driver



How does the Rational Collaborative Development Platform for zEnterprise address pains/challenges?



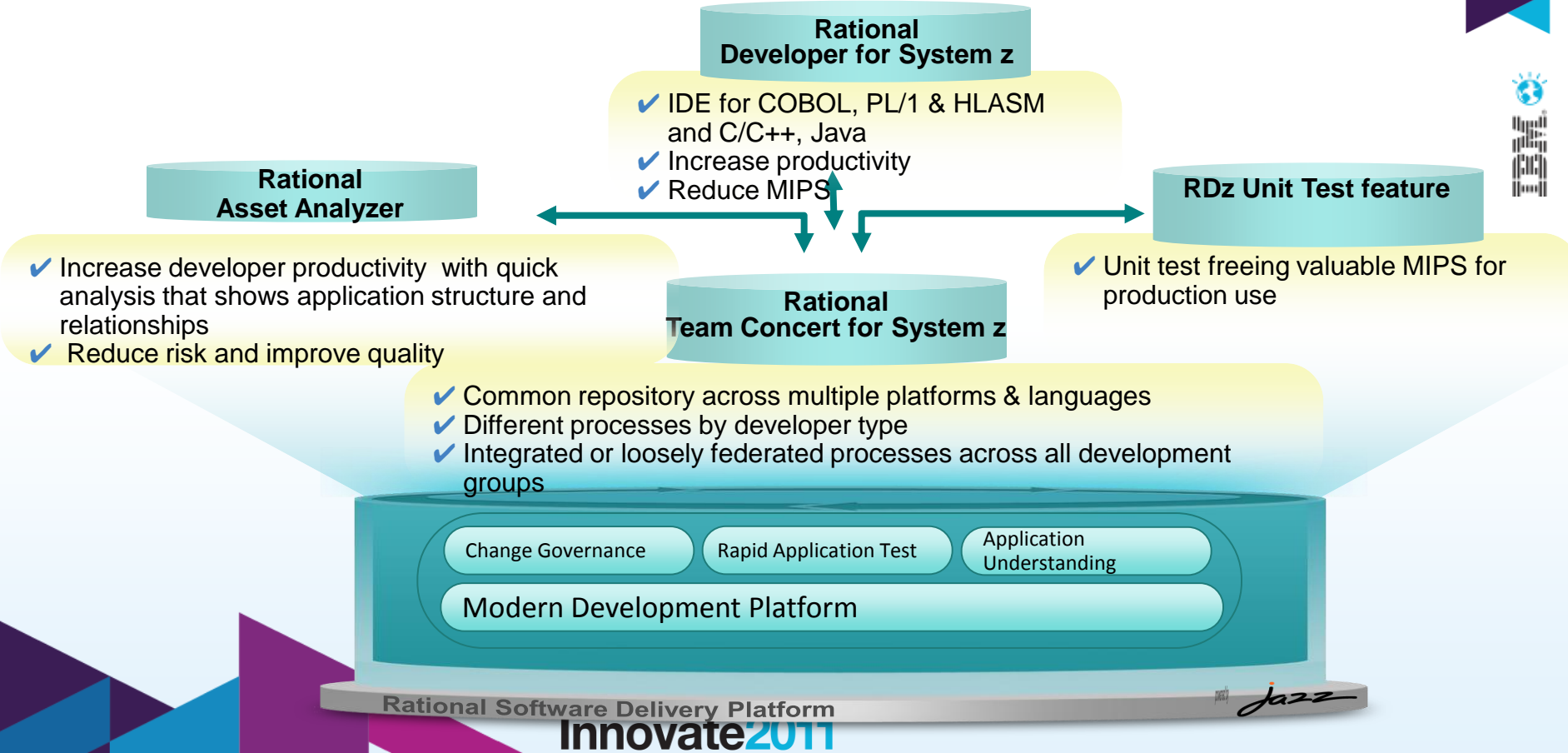
Challenge	Offering	Business Benefit
Low developer productivity with green screen tools	EM Solution for Developers, with integrated collaboration, change management, SCM, analysis, development, and UT	<ul style="list-style-type: none"> RDz can improve mainframe developer productivity 15%-44% when analyzing, coding, compiling, testing and debugging Addition of RAA cuts change analysis time- sometimes from months to days
High MIPS consumption	RDz and RDz UT, harnessing the processing power of distributed systems	<ul style="list-style-type: none"> RDz brings a 50%-80% reduction in host CPU usage with workstation syntax checking RDz UT further reduces MIPS consumption, including 15% less compile cost and 10% less cost for TSO sessions Free up MIPS for production work
Long waits for mainframe test cycles <ul style="list-style-type: none"> Mainframe running near to or at capacity causes short test windows Dependent on the operations team development/test environment set up 	RDz UT installed on a developer's workstation or a shared server	<ul style="list-style-type: none"> Test cycles available when they are needed for as long as necessary No waiting on the operations team for support
<ul style="list-style-type: none"> Manual, error prone analysis- typical estimate is that a developers spends 45% of their time on analysis Long regression test 	<ul style="list-style-type: none"> RDz RAA with RDz Integration 	<ul style="list-style-type: none"> RDz improves analysis time by 40% The addition of RAA with RDz Integration for analysis automates this and cuts change analysis time- sometimes from months to days Test cases pinpointed by automated analysis
Difficult to enforce, manual processes	RTC	Built in process enforcement by RTC helps customers meet audit and compliance mandates
Isolated developers, tooling, and processes for different platforms and programming languages	Common, Jazz-based team infrastructure	Up to 50%* increase in team productivity (*based on IBM Customer surveys)
<ul style="list-style-type: none"> Difficulty in attracting new developers; 80% of mainframe developers are 50+ and considering retirement Billions of dollars of investments in 20+ year old applications 	EM Solution for Developers, with integrated collaboration, change management, SCM, analysis, development, and UT	A highly productive environment that meets the needs of developers accustomed to an integrated, visual, automated development platform



**The Base integrated set of
Rational technologies that
make up the Rational
Collaborative Development
Platform for zEnterprise.**



The Collaborative Development Platform for zEnterprise.



Rational Collaborative Development Platform for zEnterprise – The Way Forward



Customer Facing Partnership

