

Innovate2011

The Rational Software Conference

11th and 12th of October

Let's **build** a smarter planet.



How to Combine SAP Solution Manager with IBM Rational

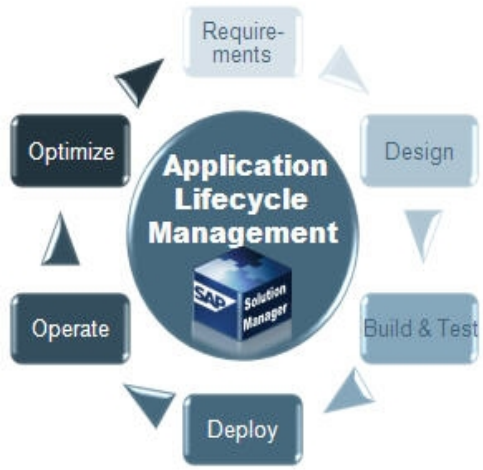
Bernd Eberhardt

Product Manager, IBM Rational SAP Alliance



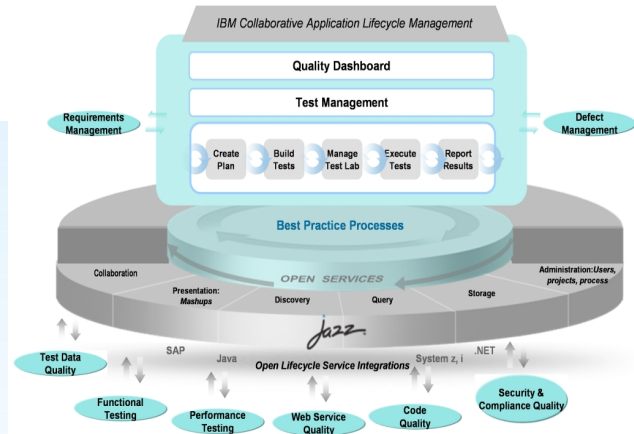
ALM with SAP Solution Manager and IBM Rational software

SAP Solution Manager



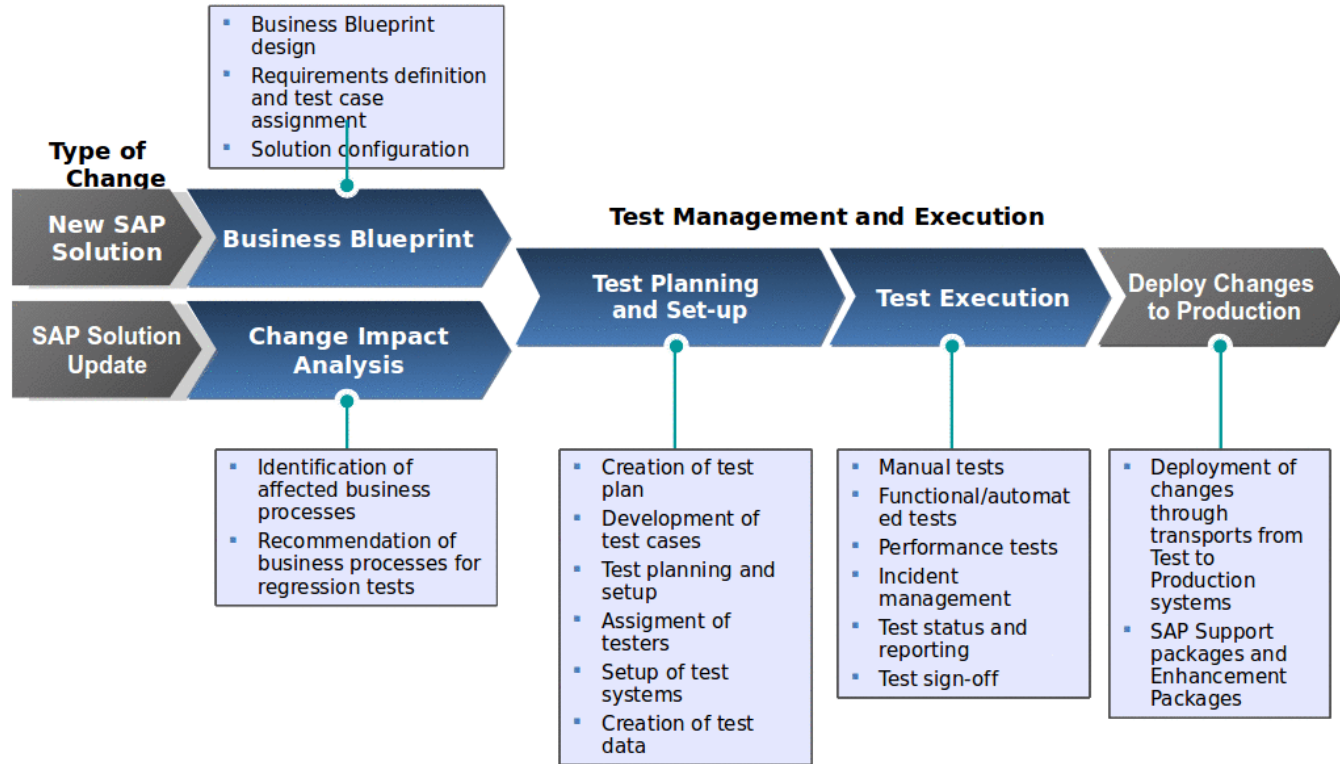
- Reduces risk and lowers TCO through standardized and integrated E2E Solution Operations according to ITIL
- Optimizes business benefits through a comprehensive and integrated quality management process
- Leverages built-in innovation by making innovation a non-event and protecting existing investments

IBM Rational ALM Platform



End-to-end Quality Management is a key element of effective Application Lifecycle Management to help lower costs and improve deployment success

Quality Management for SAP-centric Solutions



E2E Quality and Test Management of SAP-centric Solutions



SAP Solution Manager Business Blueprint

- Setup of business process hierarchy
- Business requirements

SAP Solution Manager Business Process Change Analyzer

- Identification of business processes affected by code / customizing changes

Rational. software Rational Quality Manager

- Test Planning
- Test Requirements
- Business requirements linked with test cases

Rational. software Rational Requisite Pro

- Business to IT requirements

SAP SAP TDMS

- Setup of lean Test system

SAP Solution Manager Service Desk

- Incident Management

Rational. software Rational Quality Manager

- Lab Management
- Defect Tracking

WORKSOFT! Certify

- Automated Functional Testing

Rational. software Rational Performance Tester

- Load and Stress Test

Rational. software Rational ClearQuest

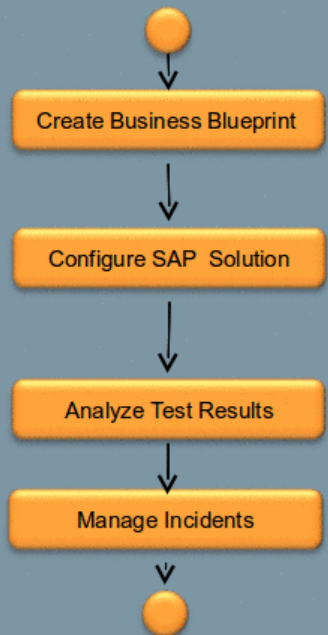
- Defect and Change management

SAP Solution Manager – IBM Rational Integration



SAP Solution Manager

Create SAP Solution Manager Project

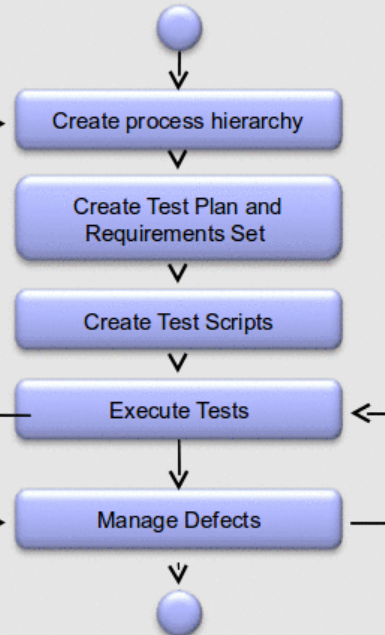


Close SAP Solution Manager Project



IBM Rational Software

Create Rational Quality Manager Project



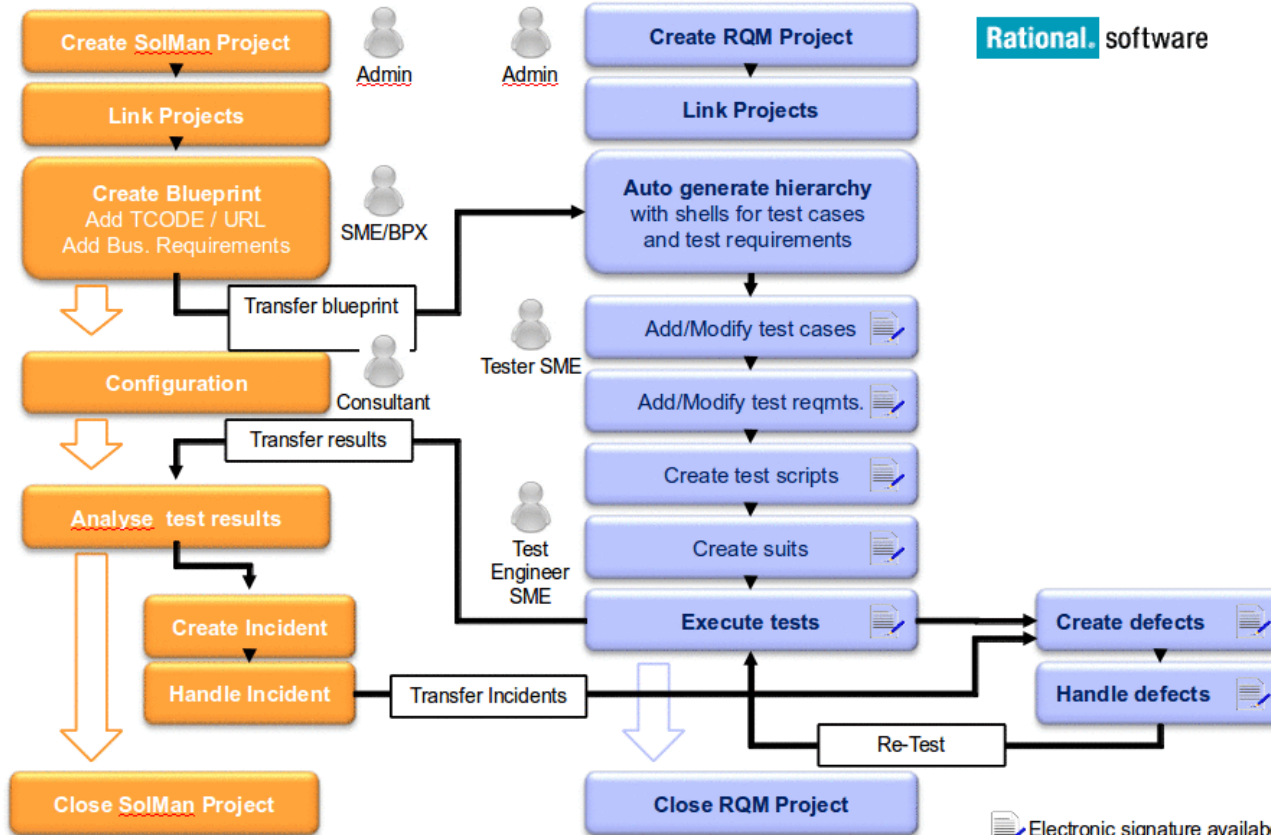
Create Rational Quality Manager Project

Rational. software



The **SAP Solution Manager Connector for IBM Rational software** delivers end-to-end test management of SAP solutions, as part of an integrated application lifecycle management solution

Detailed Integration Workflow



Rational. software



Electronic signature available

Rational Connector for Solution Manager Available on Jazz.NET



<https://jazz.net/downloads/sap-connector/releases/1.0.0>

The screenshot shows the IBM Jazz Downloads page for the Rational Connector for SAP Solution Manager 1.0.0. The page has a blue header with the Jazz logo and navigation links: Home, About Jazz, Roles, Projects, Downloads, Forums, Library, Development, and Community. On the right side of the header are links for Register and Log In. The main content area features a breadcrumb trail: Downloads > Rational Connector for SAP Solution Manager >. Below this is a sidebar with links for Rational Connector for SAP Solution Manager, Releases, Related Resources, Download tips, Forums, Blog, and Wiki. The main content area displays the product name, version (1.0.0), and release date (October 11, 2011). There are two tabs: 'Getting Started' (selected) and 'All Downloads'. A download icon is visible in the top right corner of the content area. The main text describes the connector's purpose and supported versions.

Home About Jazz Roles Projects Downloads Forums Library Development Community Register | Log In

jazz Downloads

Downloads > Rational Connector for SAP Solution Manager >

Rational Connector for SAP Solution Manager

Releases

Related Resources

Download tips

Forums

Blog

Wiki

 **Rational Connector for SAP Solution Manager 1.0.0**
October 11, 2011

Getting Started All Downloads 

About the Rational Connector for SAP Solution Manager: The Rational SAP Connector provides the ability to integrate key areas of IBM Rational software with SAP's application lifecycle management solution.

The SAP Connector enables you to share data between the Rational tools and SAP Solution Manager. You can export SAP Solution Manager blueprints to create IBM Rational Quality Manager test plans and test cases. You can also link IBM Rational RequisitePro requirements or stand alone Rational Quality Manager requirements. Later, test results can be imported into Solution Manager from Rational Quality Manager for reporting and analysis. In addition, the SAP Connector allows users to create links between IBM Rational ClearQuest defects and SAP Service Desk incidents.

The Rational Connector for SAP Solution Manager supports Rational Quality Manager (2.0.1.1+, 3.0.1+), Rational RequisitePro (7.1.1+), and Rational ClearQuest (7.1.1+, 8.0). SAP Solution Manager 7.1 Support Package Stack 2 is required for this integration.

Innovate2011



Software. Everywhere.

SAP Solution Brief Available



SAP Solution Brief
SAP Services
SAP Solution Manager

Teaming SAP® Solution Manager and IBM Rational Software for Top Test Management

Quick Facts

Summary

Combining the SAP® Solution Manager application management solution with IBM Rational software results in comprehensive, automated, and integrated support for your test management program. This approach can help to minimize errors, reduce costs, and align your business and IT goals more effectively.

Business Challenges

- Consistently manage change across testing projects for SAP and non-SAP software
- Deliver high-quality, reliable software as scheduled
- Verify that new business processes have been properly tested and deployed

Key Features

- **Business blueprint** – Design a business blueprint for new software, define your testing requirements, assign test cases, and configure the new software to your needs
- **Impact analysis** – Identify business processes affected by solution updates and recommend processes for regression tests
- **Test planning and setup** – Design test plans, develop test cases, assign testers, set up test systems, and create test data
- **Test execution** – Handle manual, automated, and performance tests as well as incident management, test reporting and test sign-offs

Business Benefits

- **Comprehensive traceability** by integrating your requirements with your quality management processes, methods, and tools
- **Enhanced governance** by taking a comprehensive and integrated change management approach across SAP solutions, non-SAP solutions, and custom-built applications
- **Comprehensive approach toward quality and lifecycle management** by combining the best practices supported by SAP Solution Manager and IBM Rational tools

For More Information

To learn more, contact your local SAP representative or visit us online at www.service.sap.com/alm or www.ibm.ly/rationalasap.



www.sap.com/contactsap

White paper (PDF)

White paper (PDF) (10/13) SAP Solution Manager and IBM Rational Software for Top Test Management

White paper (PDF) (10/13) SAP Solution Manager and IBM Rational Software for Top Test Management

White paper (PDF) (10/13) SAP Solution Manager and IBM Rational Software for Top Test Management

White paper (PDF) (10/13) SAP Solution Manager and IBM Rational Software for Top Test Management

White paper (PDF) (10/13) SAP Solution Manager and IBM Rational Software for Top Test Management

White paper (PDF) (10/13) SAP Solution Manager and IBM Rational Software for Top Test Management

An automated testing program can also enhance operational efficiency. Running tests earlier can reduce repair costs. Running more tests in less time can expand testing coverage. Automating lab configuration can increase asset utilization.

Supported by SAP Solution Manager and IBM Rational software, managers in your organization will have better insight into the changing business environment and handle reporting tasks with less effort. Real-time dashboards enable proactive risk management. Customizable reports facilitate ongoing process improvement.

You can transfer test results from IBM Rational software back to SAP Solution Manager for consolidated project reporting. Both offerings scale to fit testing teams of any size – from small work groups to distributed enterprise teams – to support the evolving needs of your organization.

FOR MORE INFORMATION

To learn more about using SAP Solution Manager and IBM Rational software to strengthen your testing program, contact your local SAP representative or visit us online at www.service.sap.com/alm or www.ibm.ly/rationalasap.

“...To learn more about using SAP Solution Manager and IBM Rational software to strengthen your testing program, contact your local SAP representative or visit us online at

www.service.sap.com/alm

”
...





www.ibm/software/rational

© Copyright IBM Corporation 2011. All rights reserved. The information contained in these materials is provided for informational purposes only, and is provided AS IS without warranty of any kind, express or implied. IBM shall not be responsible for any damages arising out of the use of, or otherwise related to, these materials. Nothing contained in these materials is intended to, nor shall have the effect of, creating any warranties or representations from IBM or its suppliers or licensors, or altering the terms and conditions of the applicable license agreement governing the use of IBM software. References in these materials to IBM products, programs, or services do not imply that they will be available in all countries in which IBM operates. Product release dates and/or capabilities referenced in these materials may change at any time at IBM's sole discretion based on market opportunities or other factors, and are not intended to be a commitment to future product or feature availability in any way. IBM, the IBM logo, Rational, the Rational logo, Telelogic, the Telelogic logo, and other IBM products and services are trademarks of the International Business Machines Corporation, in the United States, other countries or both. Other company, product, or service names may be trademarks or service marks of others.

