

IBM Software

Innovate2011



Keynote: Requirements Definition and Management Strategy and Vision

Requirements Management Tools Team

Richard Watson
richard.watson@uk.ibm.com

Jared Pulham
jared.pulham@uk.ibm.com



DISCLAIMER

- *This presentation represents future product direction and strategy and is presented under terms of a Confidentiality Agreement.*
- *IBM's statements regarding its plans, directions, and intent are subject to change or withdrawal without notice at IBM's sole discretion. Information regarding potential future products is intended to outline our general product direction and it should not be relied on in making a purchasing decision. The information mentioned regarding potential future products is not a commitment, promise, or legal obligation to deliver any material, code or functionality. Information about potential future products may not be incorporated into any contract. The development, release, and timing of any future features or functionality described for our products remains at our sole discretion.*
- *Information is confidential and must not be shared or redistributed without permission from IBM.*

Smarter products & systems are changing our planet



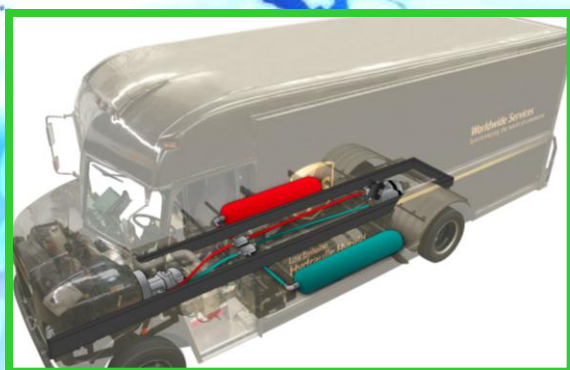
Smarter automobiles



Smarter health care



Smarter devices



Smarter hybrid vehicles



Smarter energy



Smarter defense systems

Software drives today's innovation for a smarter planet

Transforming the way we live, work, and play



Poor Requirements Management has a Significant Impact on your Business

Requirements Rework

- Errors, late detected in the Maintenance phase can cost up to **200 times** more than detected early in Requirement Analysis phase¹
- **More than 40%** of development budget can be consumed by poor requirements²

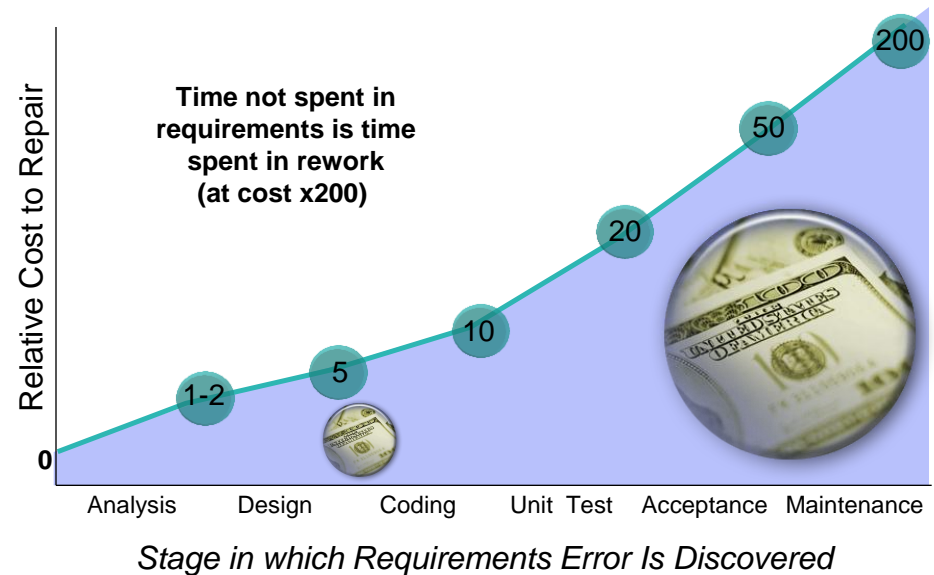
Project Impacts

- **41%** of projects fail to deliver the expected business value and ROI³
- **49%** of projects overrun original estimates³
- **28%** of projects on time and on budget⁴

Project Delays

- Being late to market by 6 months or more will cost organizations 33% of the 5-year ROI⁵

Requirements issues drive excessive rework, delays, poor quality, and project failures



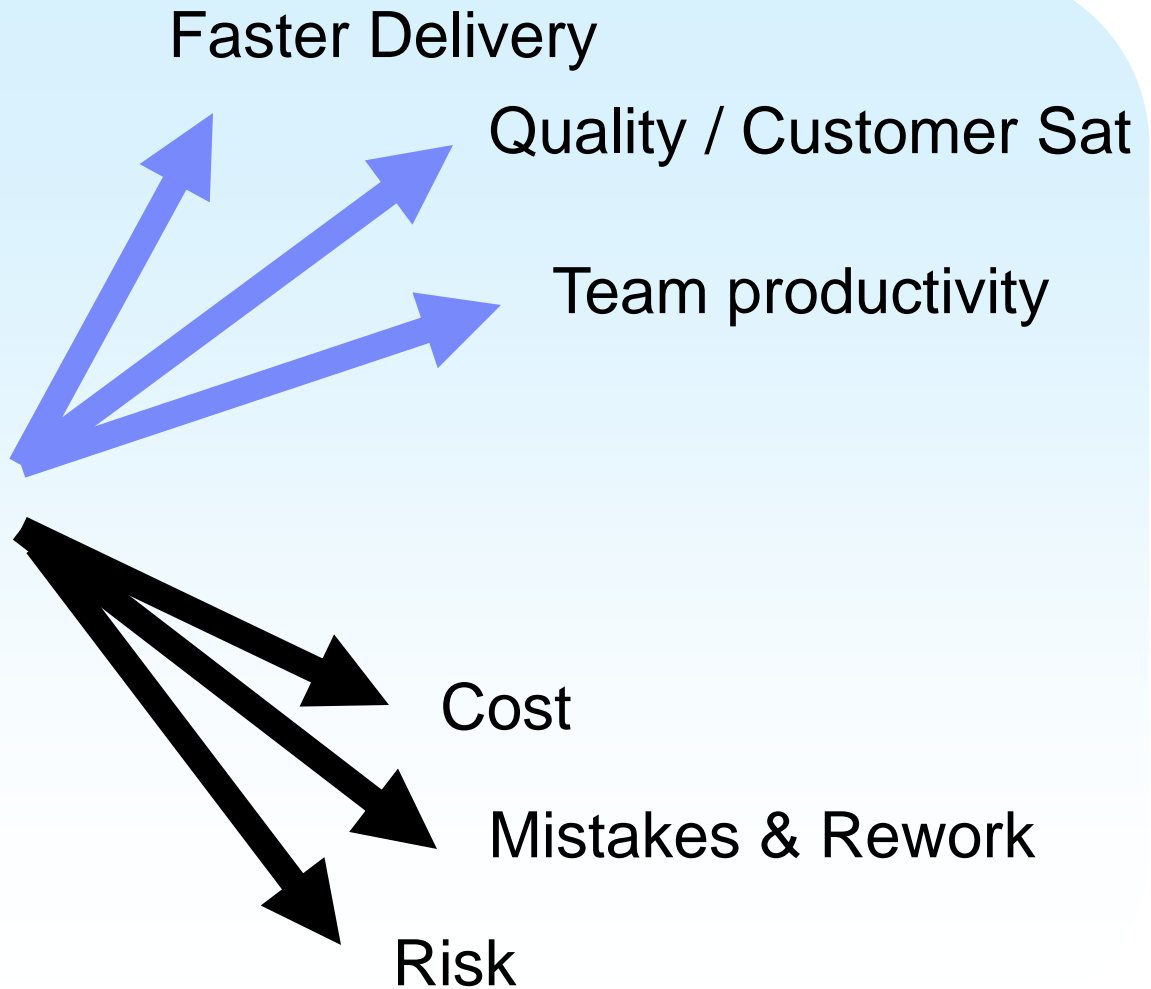
“Our research indicates 80-plus percent of development failures result directly from poor requirements gathering, management, and analysis.”

IDC, November 2007

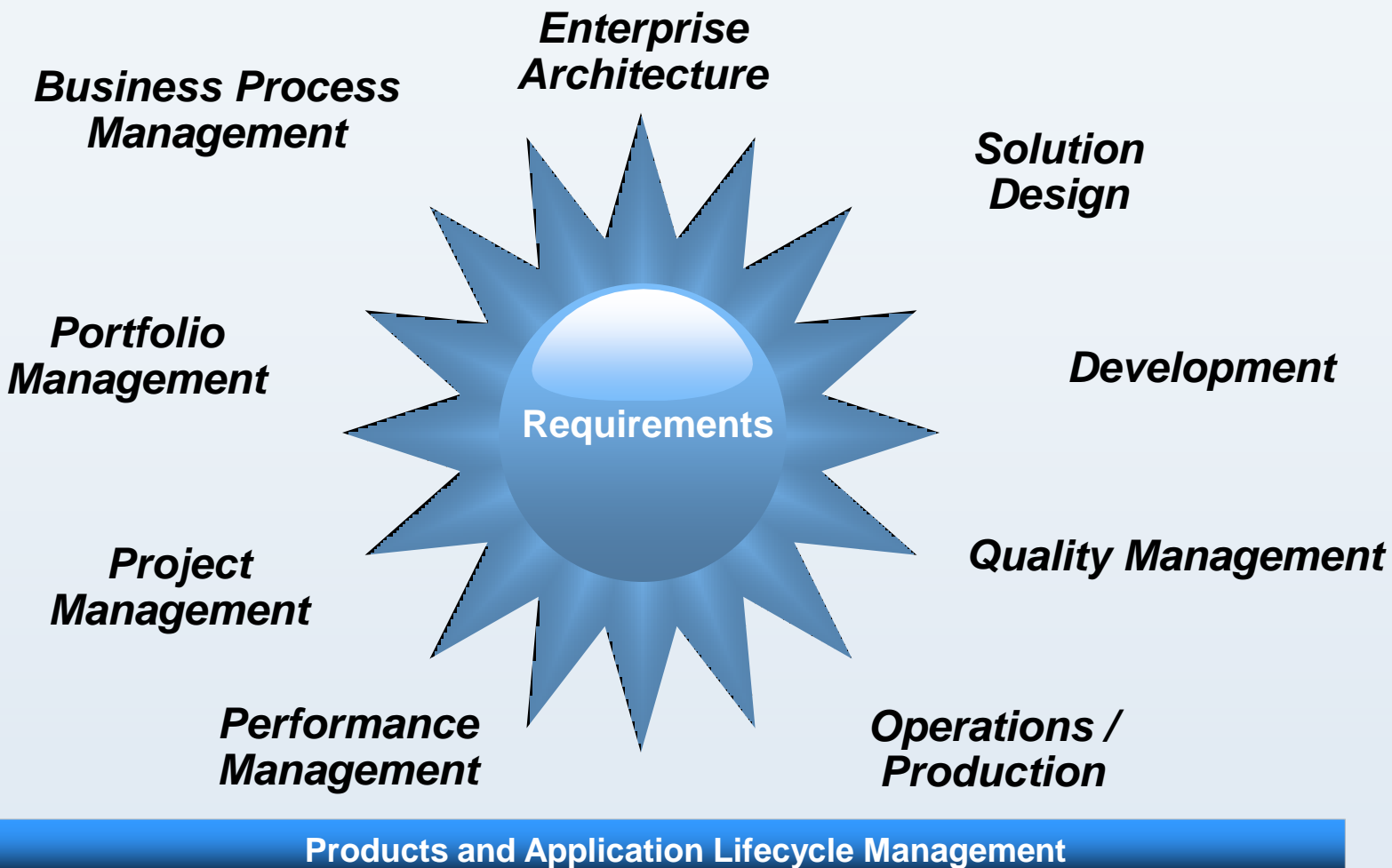
Sources: 1) Leffingwell & Widrig, “Managing Software Requirements,” Addison Wesley, 1999 2) IAG Consulting, 2008 3) Dynamic Market Limited, 2007 4) Standish Group, 2001 5) Don Reinertsen, McKinsey, 1983

Goal: More value; Greater business agility

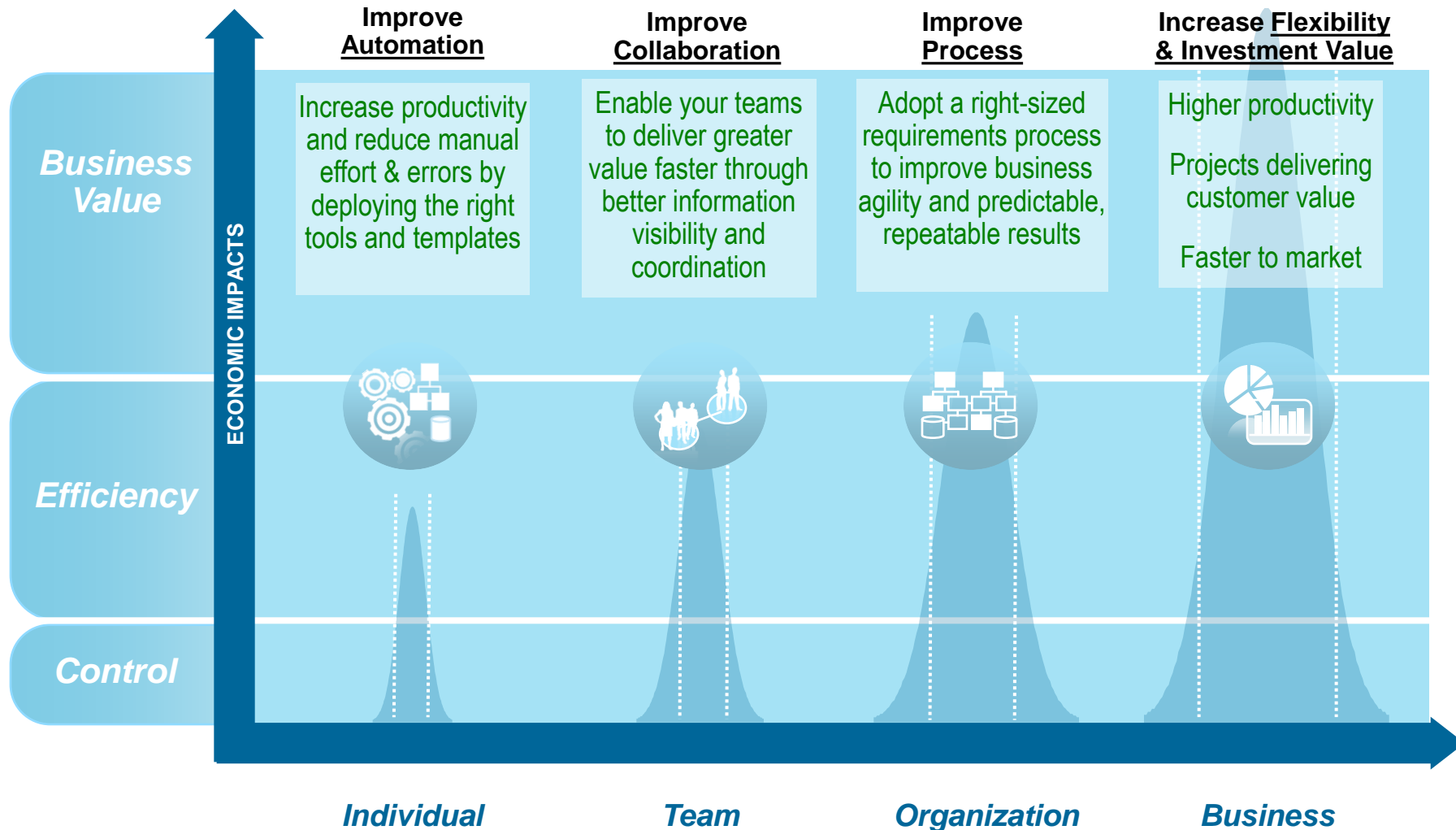
Value



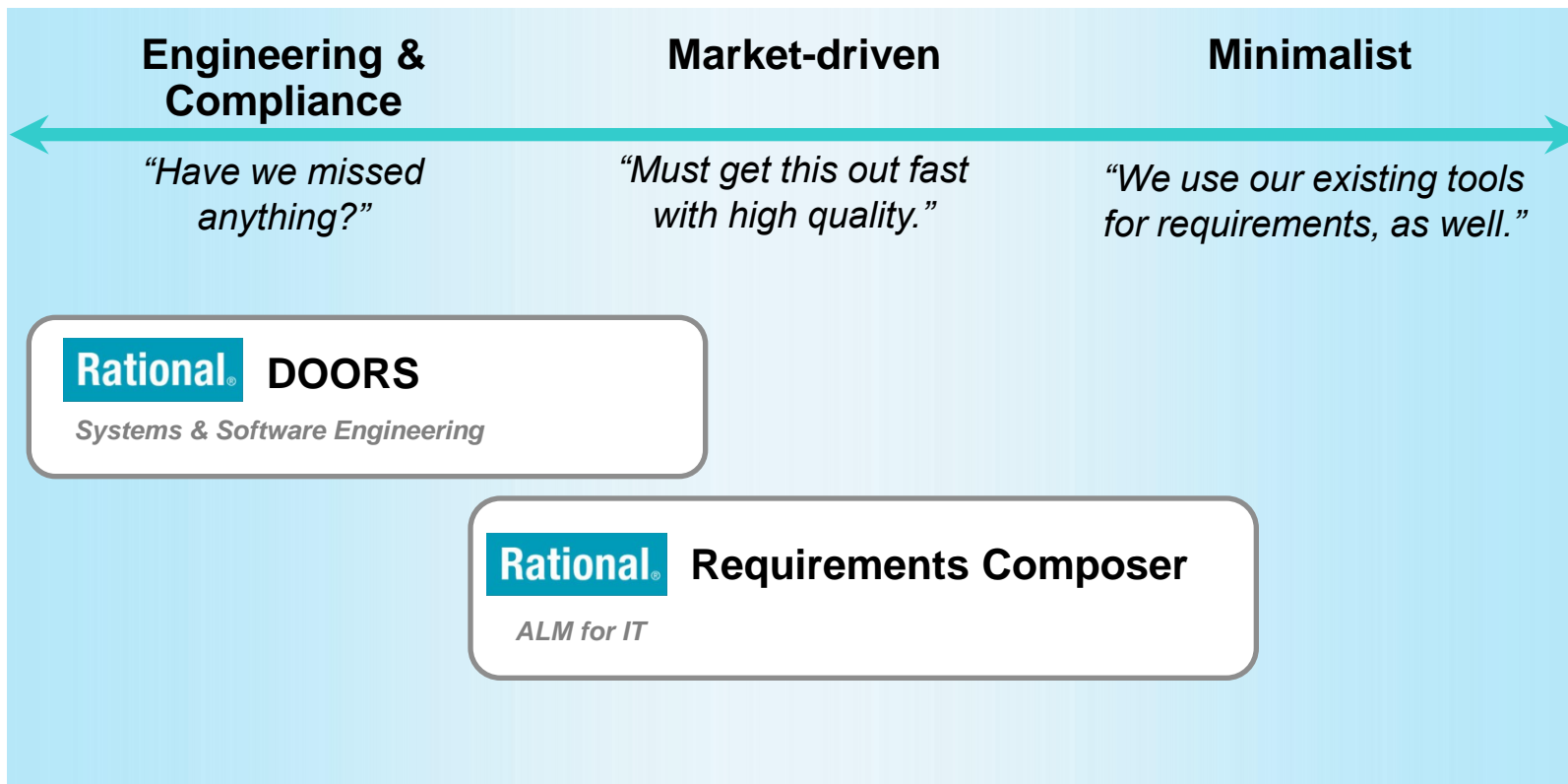
Requirements are everywhere and touch everything



Improve your ROI with better requirements practices

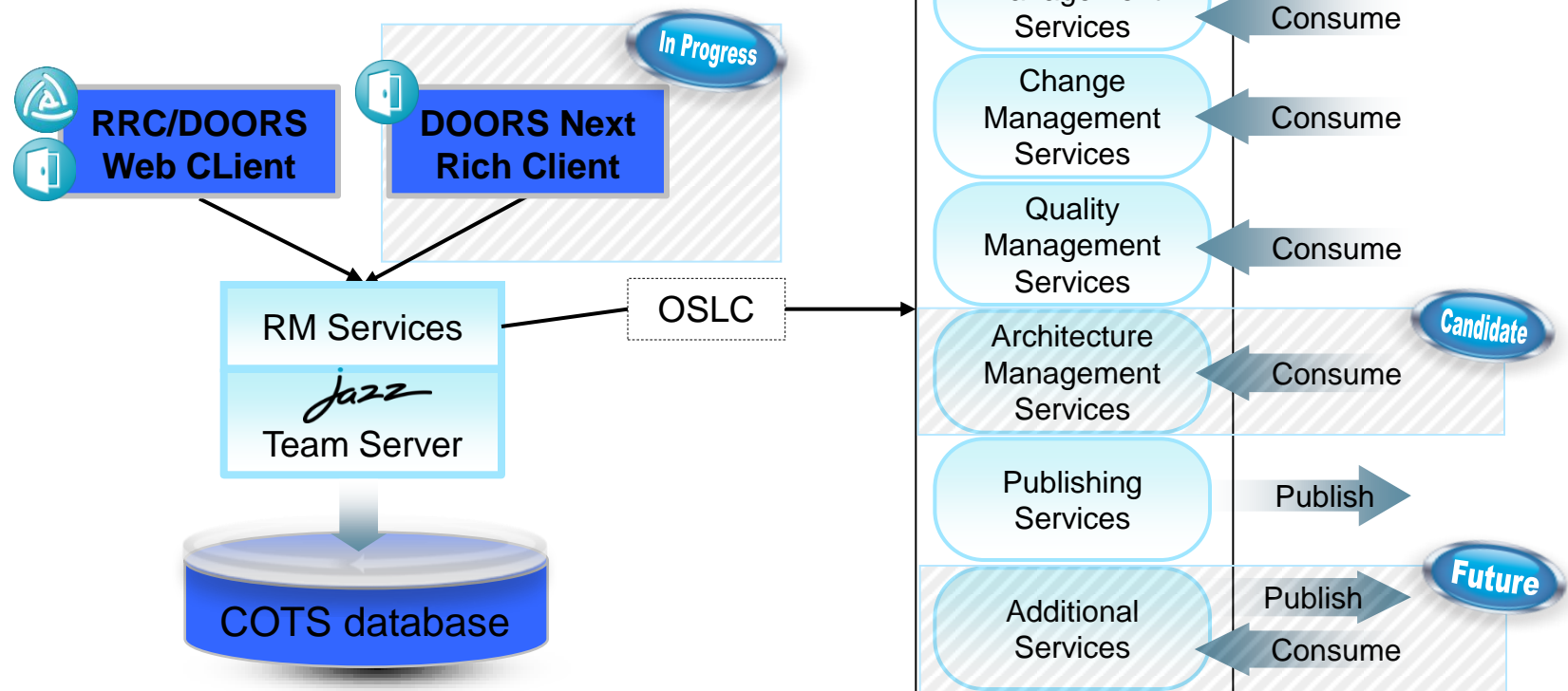


Addressing various RM needs

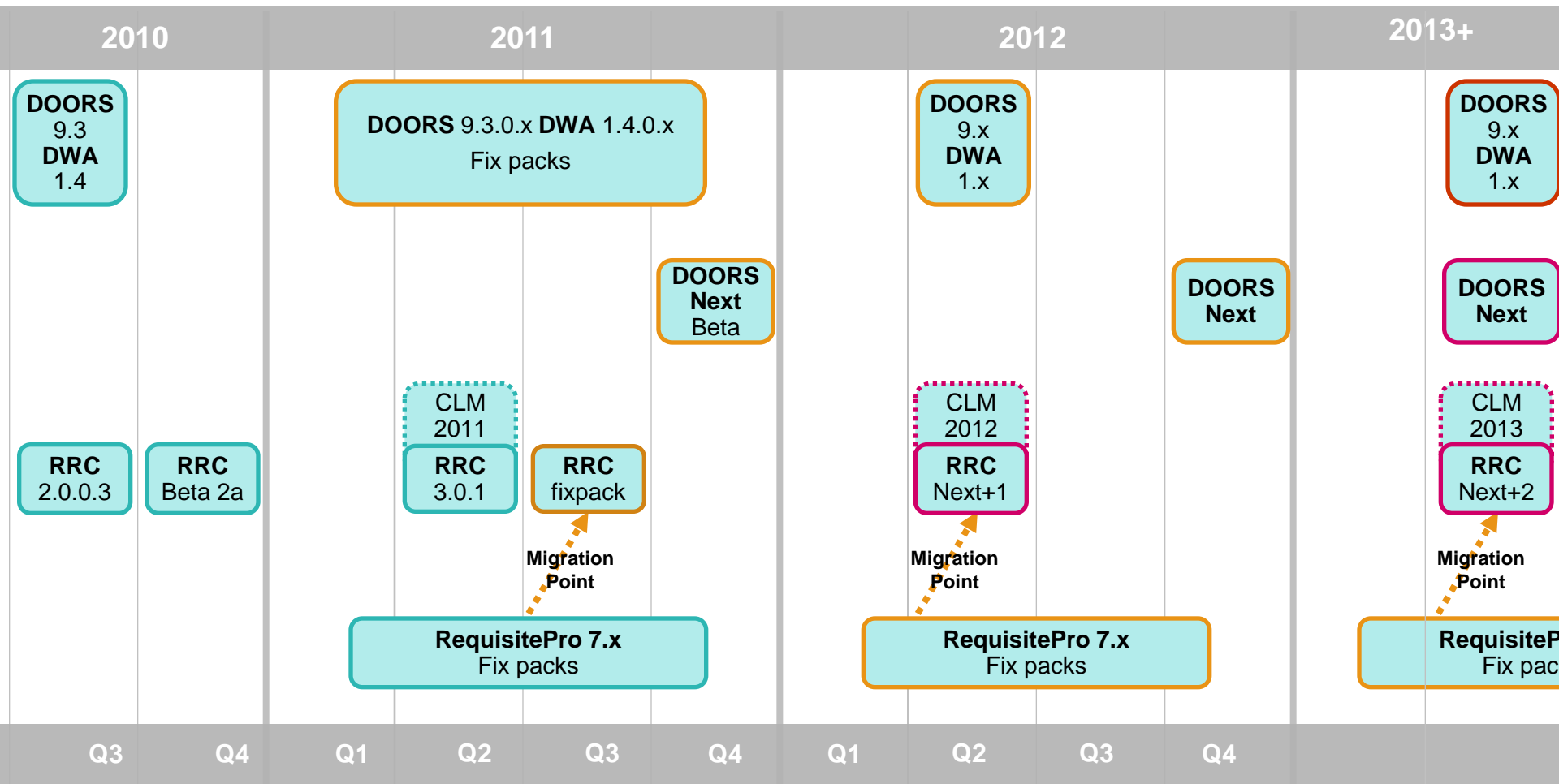


Architectural Plan for Rational RDM Tools

- Requirements visibility and traceability across the lifecycle
- Open integration architecture built on the Jazz Team Server
- Integrations using Open Services for Lifecycle Collaboration (OSLC)



Requirements Tools – Summary Roadmap



STATUS: ■ Released ■ Planned ■ Conceptual

2011 Enhancements: DOORS and DOORS Web Access

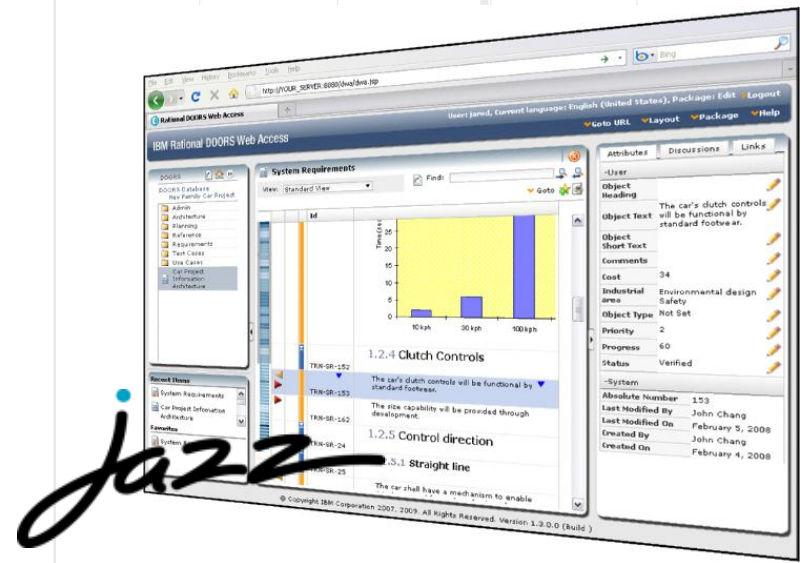


DOORS 9.3.0.x

- ▶ Security Enhancements
 - ▶ Support direct authentication with CAC cards
- ▶ DOORS – HP Quality Center - improved throughput and administration
- ▶ DOORS – RQM – improved visibility of DOORS attributes

DOORS Web Access 1.4.0.x

- ▶ Support for CAC card authentication
- ▶ Extend platform support
Linux, Tomcat 6



STATUS: ■ Released ■ Planned ■ Conceptual

2012 Enhancements: DOORS and DOORS Web Access



2010

2011

2012

DOORS 9.x

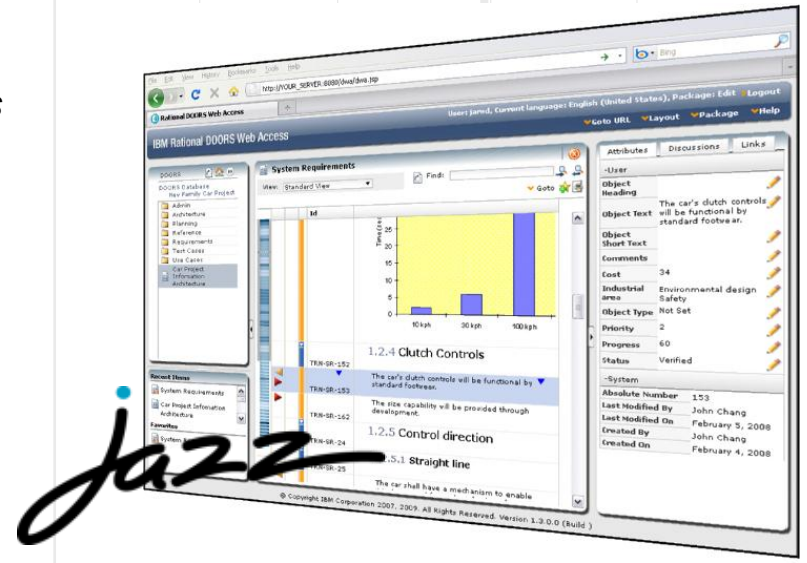
- ▶ Security Enhancements
 - ▶ Move authentication from client to the DOORS server
- ▶ Upgrade RIF to the latest version (ReqIF)
 - ▶ Focus on customer feedback for supply chain scenarios
- ▶ Transition integrations from synchronization to linked lifecycle data
 - ▶ DOORS and RQM
 - ▶ Multiple RM databases
 - Linking requirements stored in different DOORS or RRC databases (DOORS-DOORS, DOORS-RRC)

DOORS Web Access 1.x

- ▶ Electronic signature of Baselines

Q3 Q4 Q1 Q2 Q3 Q4 Q1 Q2 Q3 Q4

STATUS: ■ Released ■ Planned ■ Conceptual



Jazz

2012 DOORS Next



2010

2011

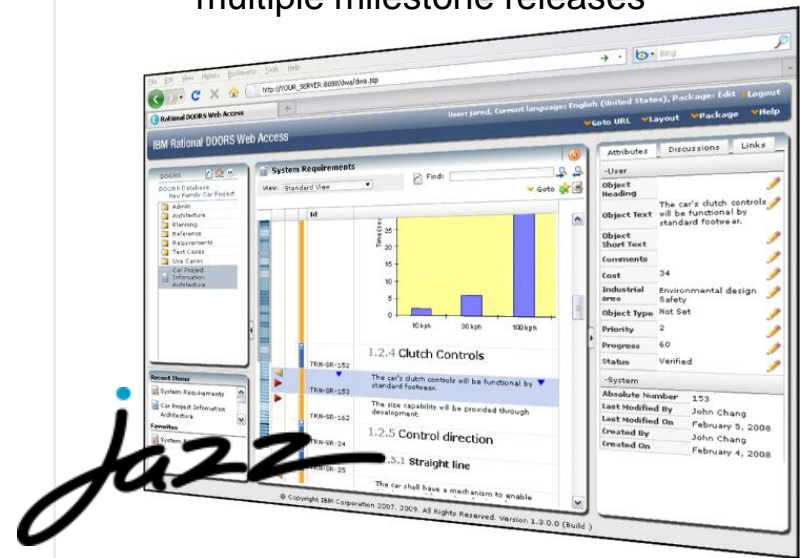
2012

DOORS Next

- ▶ Hosting DOORS on a Jazz requirements server
 - ▶ Commercial database support
 - ▶ Performance, resilience, and availability
- ▶ ALM with RTC, RQM etc. using linked data
- ▶ Interoperation with DOORS 9.x
 - ▶ Linked lifecycle data between databases
 - ▶ Data exchange (ReqIF)
- ▶ Project level attribute/types management
- ▶ Dashboard viewlets
- ▶ Requirements reuse
- ▶ Requirements and task management

DOORS Next Beta

- ▶ Extended beta plan expected over multiple milestone releases



Q3 Q4 Q1 Q2 Q3 Q4 Q1 Q2 Q3 Q4

STATUS: ■ Released ■ Planned ■ Conceptual

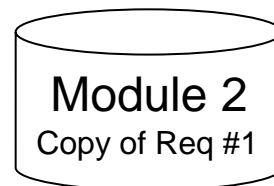
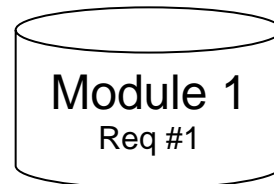
Some Benefits of DOORS Next

Goals

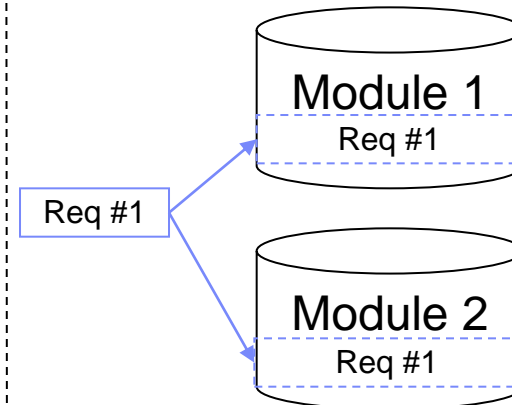
- Requirements reuse across modules
- Program/project-wide requirement types

How

- Enable requirements and type system to be reused in multiple modules



DOORS 9.x



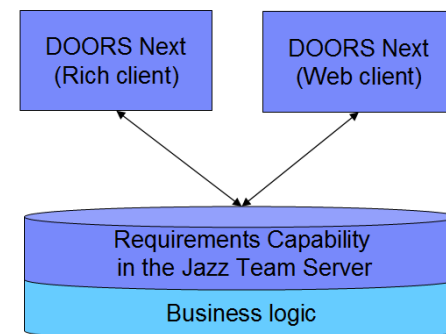
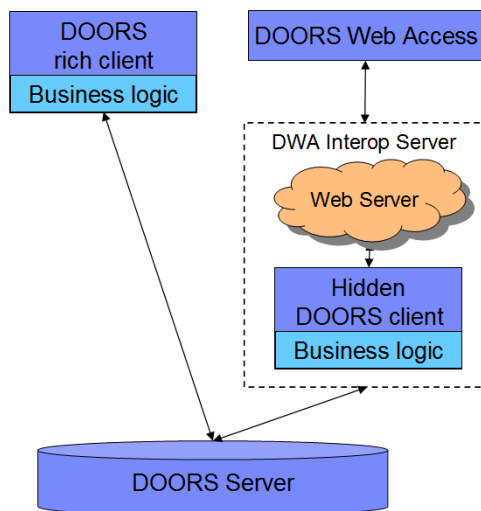
DOORS Next

Goals

- Similar capabilities available in both rich and Web clients
- Cross-module search

How

- Move business logic to server



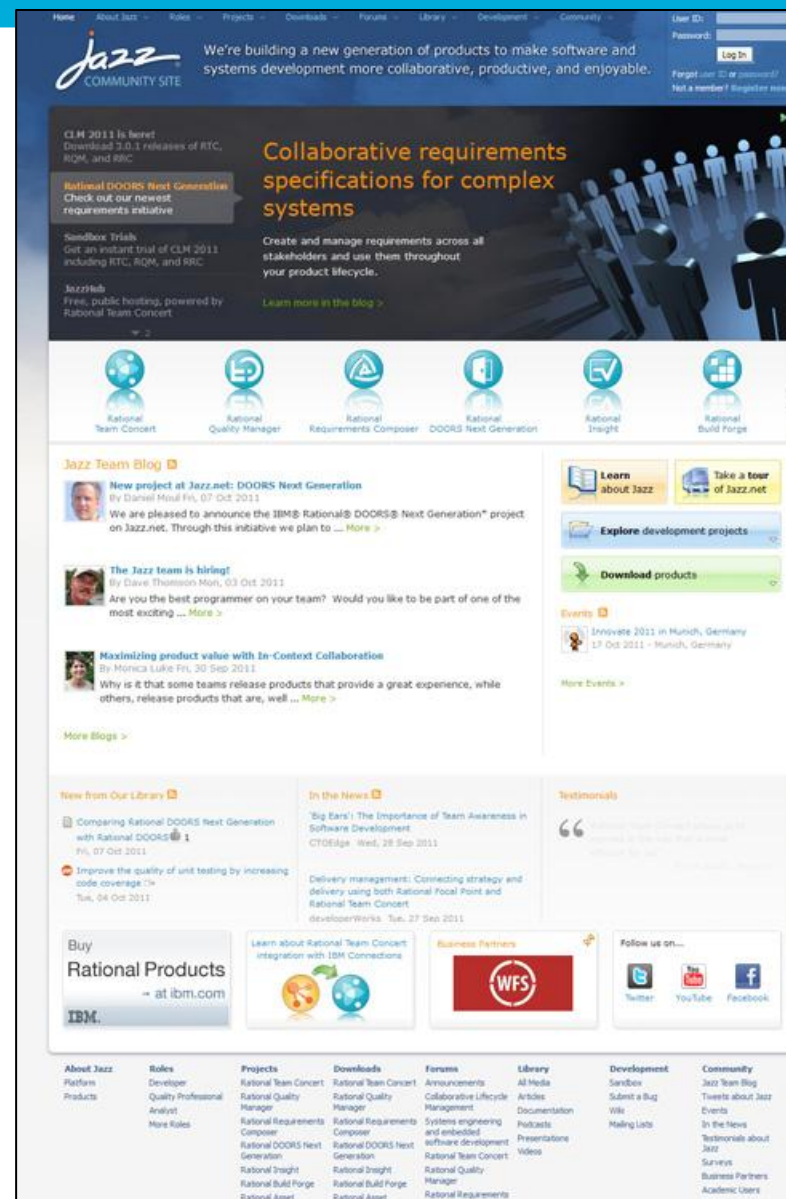
DOORS Next distinguishing features over DOORS 9.x

- Support for the Enterprise
 - Support industry standard IT technology with a cots database ([live backups](#)), standard web services enabling more standard [Web UI](#), Improved component communication enabling [rich client over a WAN](#)
- Reuse
 - Reuse of requirements and types in multiple modules [reduces overhead](#) of maintaining multiple copies of the same information – improving consistency
- Requirements Task Management
 - Support [work items](#) to clarify priorities and progress of requirements development – know when requirements you are dependent on are complete/approved
- Dashboard
 - [User & project dashboards](#), display summary information important to you and the project
 - [Metrics analysis](#) on requirements and related data, e.g. rate of change of requirements, percent of requirements implemented, test coverage, test execution, system quality
- Usability
 - Better requirements creation, editing and manipulation. Improving support for rich text including color, font, style & lists to [better express requirements](#)
- Traceability
 - [Simplify](#) creation, management and analysis of traceability by having a single link representation instead of 3 today
 - Traceability analysis (coverage, impact, gaps, compliance) [extended beyond data stored in requirements database](#)
- Change Notification
 - [Simplify understanding of change](#) by bringing together the various notification methods into a consolidated place, e.g. requirements modification, suspect links
- Cross-lifecycle
 - Better information [visibility across tools](#) through links with rich hovers, document generation, and reporting
 - Common user administration, single sign-on, and UI [consistency with other tools using the Jazz Team Server](#)

The Jazz.net Community Site

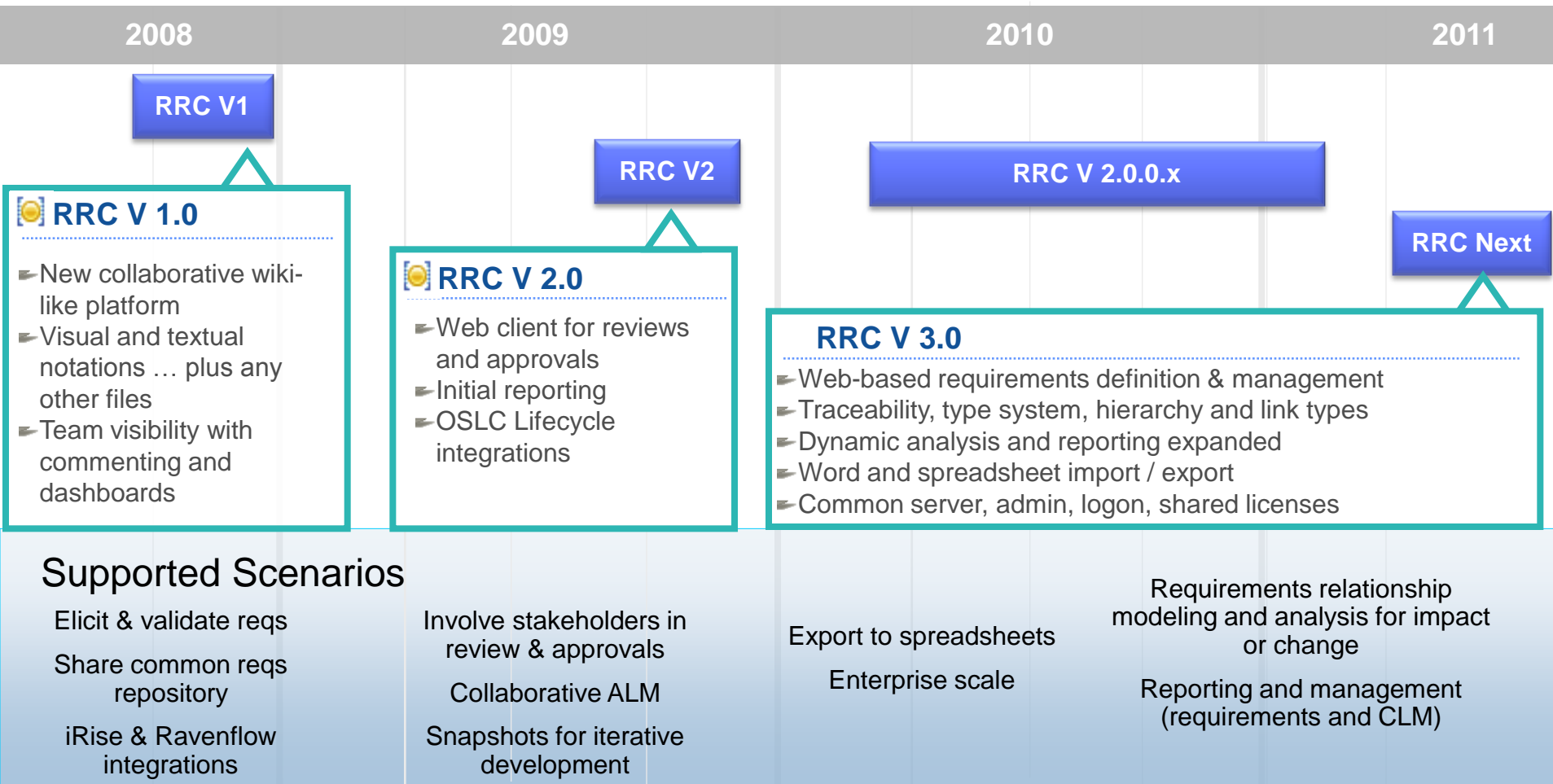
- What is it?
 - ▶ IBM's official site for the transparent development of Jazz and Rational products built on Jazz
 - ▶ A community of members interested in Jazz

- What can you do there?
 - ▶ Learn about the Jazz vision, strategy, and architecture
 - ▶ Interact directly with Jazz developers and other community members
 - ▶ Track our progress and give us direct feedback
 - ▶ Watch us use our Jazz products, and try them yourself
 - ▶ Download product trials, betas, and early milestones
 - ▶ Submit bugs and enhancement requests
 - ▶ Explore a library of articles, videos, podcasts and more
 - ▶ Get answers in the forums
 - ▶ Read our team blog
 - ▶ Register and participate for free



How has Requirements Composer Evolved?

Increasing capability and value



STATUS: ■ Released ■ Planned ■ Conceptual

IBM Rational Requirements Composer 3.0

Requirements Management for the Development Lifecycle

Rational Requirements Composer

Next-generation RequisitePro

Definition

- Rich-text documents
- Diagrams: Process, Use Case
- Storyboards, UI sketching & flow
- Project glossaries
- Templates (formal/agile)

Improved!

Visibility

- Customizable dashboards
- Analysis views
- Collections
- Milestone tracking & status

Collaboration

- Review & Approval
- Discussions
- Email Notification



Management

- Structure, Attributes/Types
- Traceability, Filtering, Tags
- Baselines, Change History
- Reuse
- Reporting Metrics & Doc.

NEW!

Improved!

Lifecycle

- Central requirements, test, & development repository
- Common administration and role-based user licensing
- Warehouse reporting

NEW!

Planning

- Integrated planning
- Effort estimation
- Progress tracking

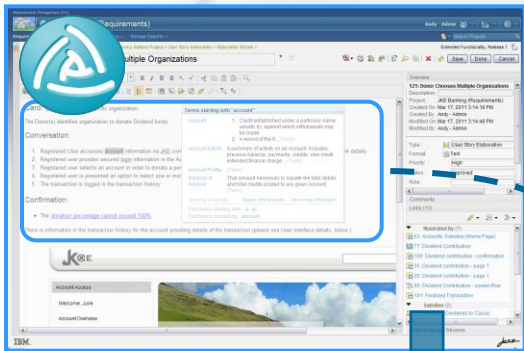
Working in a Development Lifecycle (ALM Today)

Requirements driven development across the lifecycle

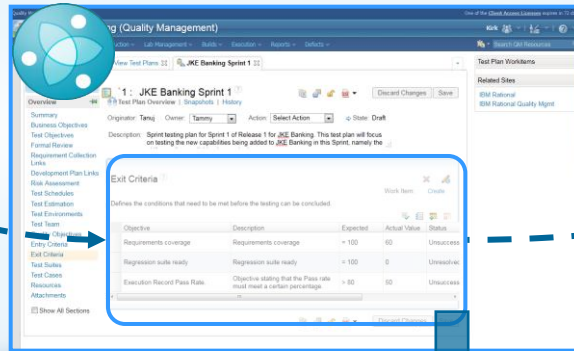


**Analysts,
 Testers,
 Developers**

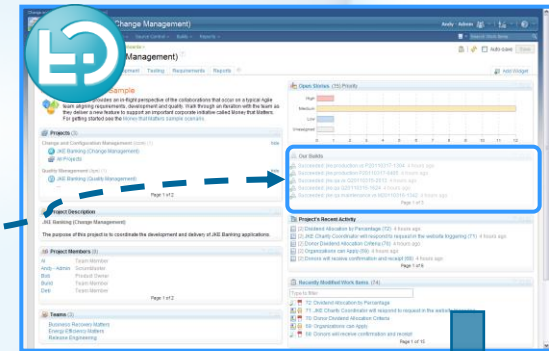
Rational Requirements Composer 3.0



Rational Team Concert 3.0



Rational Quality Manager 3.0



Requirements	Artifact Type	Implemented By	Validated By
8 Dividend allocation by percentage	Feature	75: Dividend Allocation by Percentage	18: Dividend Allocation by Percentage
11 Customers can nominate an organization for the program	Feature	67: Customers can Nominate an Org	21: Customers can nominate an organization for the program
12 Donor Dividend Allocation Criteria	Feature	73: Donor Dividend Allocation Criteria	16: Donor Dividend Allocation Criteria
23 Frequency of dividend transfer	Feature	58: Frequency of dividend transfer	1: Frequency of dividend transfer

Single View for End to End Development Needs

2011/2012 Enhancements: Requirements Composer Next



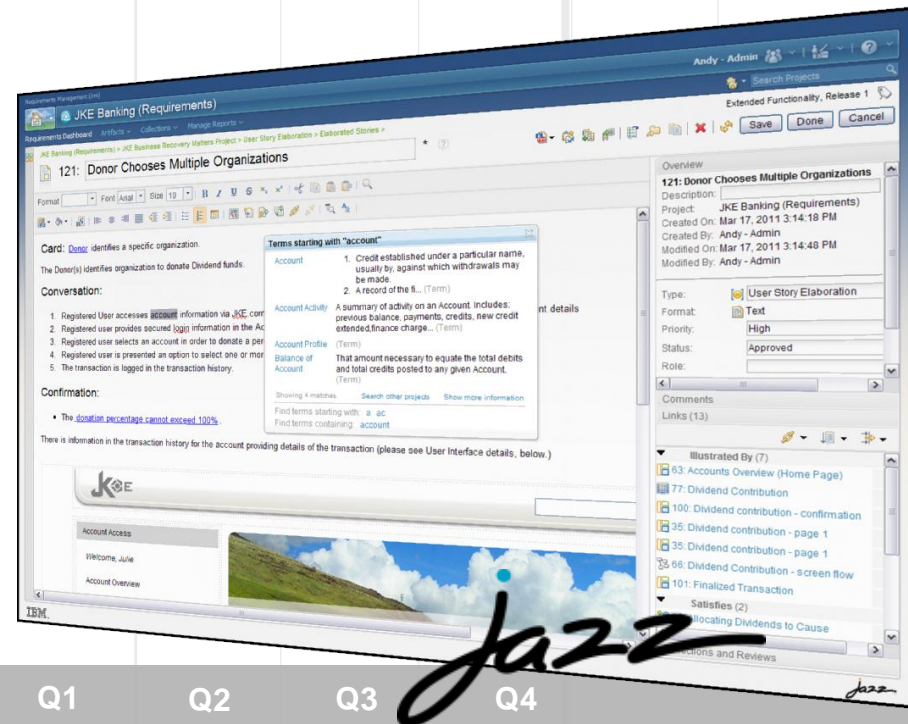
2010

2011

2012

Requirements Composer Next

- ▶ RRC/HPQC Integration Adaptor
 - ▶ Connecting RRC Requirements to Tests in HP QC
- ▶ Design Management Integration
 - ▶ Provide Connectivity from Requirements to Models (RSA, Rhapsody)
- ▶ Suspect Link Identification/Notification
 - ▶ Discover change to your requirements
- Increased Access Rights
 - ▶ Detailed requirements information control
- Graphical Traceability Explorer



Q3

Q4

Q1

Q2

Q3

Q4

Q1

Q2

Q3

Q4

STATUS: ■ Released ■ Planned ■ Conceptual

2011 Enhancements: RequisitePro



2010

2011

2012

RequisitePro 7.1.x

- ▶ RQM integration improvements
 - ▶ *RequisitePro views & packages provide requirement collections for RQM test plans*
 - ▶ *Performance*
- ▶ Word 2010 (64-bit)
- ▶ Quarterly fixpacks

**“Next-generation RequisitePro”
 is Requirements Composer**

Requirements:	Type	Priority	Status	Difficulty	Stability	Origin
FEAT1: Secure payment method Secure payment method	Functional	Must	Incorporated	Low	Medium	Partner
FEAT2: Easy browsing Easy browsing for available titles	Functional	Should	Proposed	Medium	High	Help D
FEAT3: Search by multiple criteria Ability to search for CDs by multiple criteria		Must	Approved	Medium	Medium	Help D
FEAT4: Ability to check status of an order Ability to check the status of an order	Functional	Should	Validated	Low	Medium	Partner
FEAT5: E-mail notification of new titles of... E-mail notification for Shoppers when new titles that may interest them are added to the collection.	Functional	Could	Proposed	Medium	Low	Help D
FEAT6: Highly scalable Highly scalable to include many titles and effective searching through those titles	Non-Functional	Must	Proposed	High	Medium	Custom
FEAT7: Ability to customize the Web site Shoppers should be able to customize the Web site.	Functional	Should	Proposed	Low	High	Help D
FEAT8: User registration good for future... Shoppers should be able to register once for all purchases; they should not be asked to re-enter personal information.	Functional	Should	Incorporated	Low	Low	Custom
FEAT9: Shipping Status Shoppers should be able to track and monitor their orders.	Functional	Should	Approved	Medium	Medium	Help D

Q3 Q4 Q1 Q2 Q3 Q4 Q1 Q2 Q3 Q4

STATUS: ■ Released ■ Planned ■ Conceptual

Continuing to evolve and grow IBM Rational partner solutions for requirements



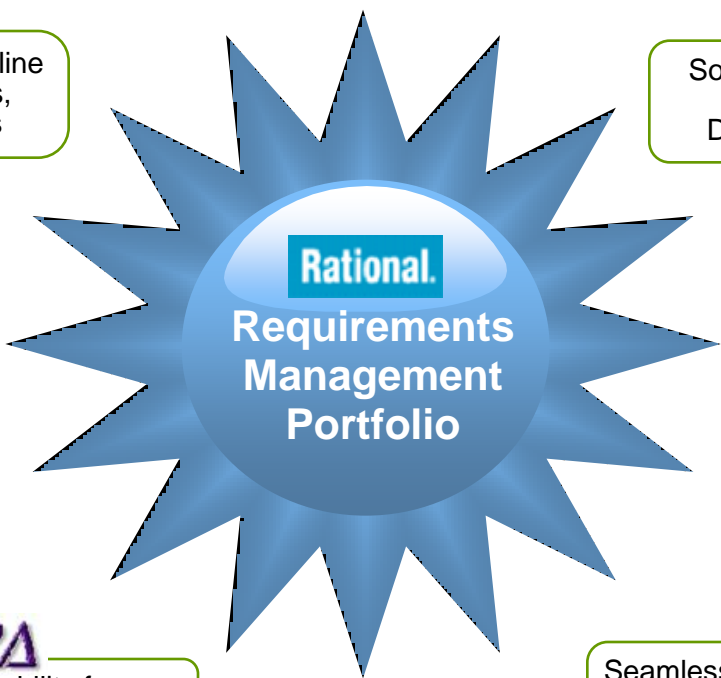
Provides software product line support for requirements, models, code, and tests



Sodius DXL Editor - Eclipse editor for DXL coders; DOORS-RSA integration



Provide seamless connectivity between DOORS & project management systems



Maximize productivity and effectiveness of DOORS users through enhanced traceability



Provides traceability from DOORS to real time tests



Seamlessly integrates DOORS with leading PLM solutions such as PTC Windchill®



QUESTIONS

www.ibm.com/software/rational



Thank
You

www.ibm.com/software/rational

© Copyright IBM Corporation 2010. All rights reserved. The information contained in these materials is provided for informational purposes only, and is provided AS IS without warranty of any kind, express or implied. IBM shall not be responsible for any damages arising out of the use of, or otherwise related to, these materials. Nothing contained in these materials is intended to, nor shall have the effect of, creating any warranties or representations from IBM or its suppliers or licensors, or altering the terms and conditions of the applicable license agreement governing the use of IBM software. References in these materials to IBM products, programs, or services do not imply that they will be available in all countries in which IBM operates. Product release dates and/or capabilities referenced in these materials may change at any time at IBM's sole discretion based on market opportunities or other factors, and are not intended to be a commitment to future product or feature availability in any way. IBM, the IBM logo, Rational, the Rational logo, Telelogic, the Telelogic logo, and other IBM products and services are trademarks of the International Business Machines Corporation, in the United States, other countries or both. Other company, product, or service names may be trademarks or service marks of others.