

**DB2** Information Management Software

# IBM DB2 Content Manager Enterprise Edition, Version 8.3

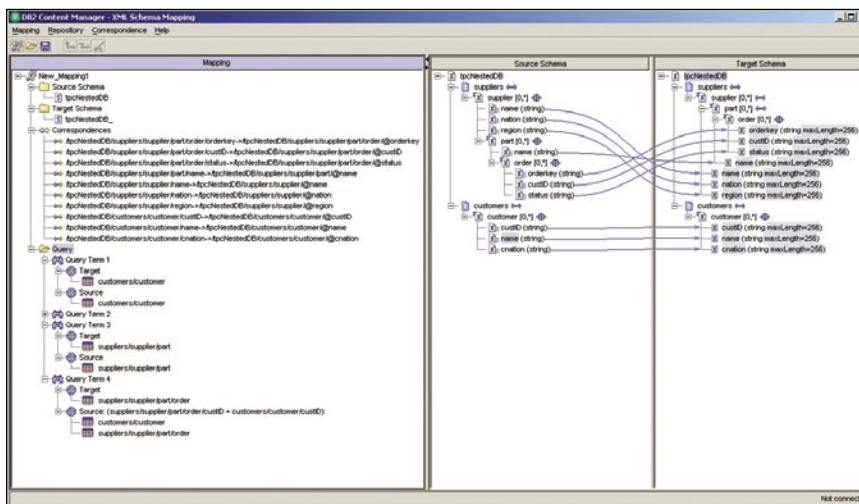
## Highlights

- Provides a comprehensive, scalable and secure content management platform
- Enables users to work with all types of information anytime, anywhere
- Delivers integrated records management capabilities
- Extends information across diverse business solutions and processes

### The need for on demand information

With business moving at the speed of now, users require on demand access to information anytime, anywhere. Businesses run on information, both “structured” or data, as well as “unstructured” or content. Content, which can represent up to 85 percent of the information an organization processes, includes formats such as documents, images, e-mail, instant messages, digital media and HTML- and XML-based Web content. The challenge is to securely capture, organize, store and deliver this disparate information.

IBM DB2® Content Manager Enterprise Edition, Version 8.3 is a scalable enterprise content management (ECM) solution that enables you to leverage all of your digital information for maximum impact. From multimedia to text, DB2 Content Manager supports a range of information formats and makes content available across multiple applications and workgroups. DB2 Content Manager includes IBM DB2 Content Manager OnDemand, an electronic report management and e-statement solution that enables high-volume capture of computer output.



The new XML schema mapping utility simplifies incoming XML document support and management.

## Information management and archiving for the on demand world

You can integrate DB2 Content Manager with existing hardware and software solutions, including PeopleSoft, Siebel and SAP applications, to leverage a common infrastructure and lower your total cost of ownership. DB2 Content Manager and IBM WebSphere® information integration solutions together enable you to access, manage and integrate content across diverse repositories, giving organizations a single view of information, no matter where it resides.

### Automating records management

In Version 8.3, IBM DB2 Content Manager provides a DB2 Records Manager enabler, tightly integrating DB2 Content Manager with robust, highly scalable records management tools. The integration with DB2 Records Manager ensures automatic,

consistent and accurate records declaration and classification across all forms of business information, streamlining compliance and reducing administrative costs. You can use the DB2 Records Manager enabler to:

- *Declare e-mail messages and attachments as records with existing e-mail applications such as Lotus® Domino® and Microsoft Exchange Server.*
- *Declare corporate documents as records, and search, retrieve, view and print record contents with existing clients such as eClient, DB2 Content Manager and DB2 Document Manager.*
- *Store declared records in a centralized enterprise repository.*
- *Use workflow user exits to customize processes that perform record declaration within DB2 Content Manager Document Routing.*

### Greater flexibility with new workflow functions and full-text search capabilities

With full-text search capabilities for both meta data and text-based documents, DB2 Content Manager allows users to easily locate pertinent information. DB2 Content Manager Enterprise Edition document routing functions support a workflow capability that enforces business rules at each step. Enhancements to document routing in Version 8.3 include:

- *Graphical workflow builder.*
- *Decision points (based on attribute values).*
- *User-defined actions and action lists.*
- *Parallel routing.*
- *Business application node.*
- *Support for and implementation of subprocesses.*

### Enabling accessibility with Web services and XML support

DB2 Content Manager includes Web services support that leverages the power of IBM WebSphere and DB2 Content Manager to deliver remote access to DB2 Content Manager functionality. The Web services interface allows you to integrate applications with DB2 Content Manager regardless of programming language or platform.

*“Our DB2 Content Manager solution has transformed our business. We can now be much more responsive to our customers while lowering our operating costs—which will enable us to recover our investment fully in just one year.”*

*—James Bowman, Vice President, Information Systems,  
FedEx Trade Networks*

Key enhancements include:

- *Support for .NET client applications including support for DIME attachments.*
- *Support for Java™ and J2EE client applications including MIME attachments.*
- *Support for generating WSDL specific to a user's system.*
- *Support for all core content semantics and document routing.*

The XML support in DB2 Content Manager Version 8.3 delivers the capability to capture and manage documents adhering to specific XML schemas, such as industry-standard schemas, in a common content repository allowing for complete automation of capture, management and records management of XML documents.

### **Managing printed output**

By leveraging the technology behind DB2 Content Manager OnDemand, DB2 Content Manager Enterprise Edition brings efficiency to the management of printed documents. For example, you can organize and store virtually any printed output for quick and easy retrieval, enhancing employee productivity and customer service. You can also extend electronic bill presentment and payment (EBPP) alternatives to your customers so they can access archived bills and statements from your Web site.

### **Unparalleled scalability**

DB2 Content Manager, which supports a multi-tier, scalable and distributed architecture, includes the following components:

- *Resource Managers—specialized repositories optimized for managing the storage, retrieval and archiving of enterprise content. The hierarchical storage management capabilities of DB2 Content Manager leverage the storage management capabilities of IBM Tivoli® Storage Manager to support a broad range of magnetic, optical and tape devices.*
- *Data Model—flexible data modeling capabilities allow applications to represent real-world objects in the enterprise content environment, with links that enable easy access to related business content, significantly reducing the application development effort.*
- *Library Server—a central source for indexing, describing, locating, organizing and managing enterprise content.*
- *Mid-tier Server—a Web-exploiting broker that mediates between the client and the Library Server. It supports the enhanced DB2 Content Manager application programming interface (API) toolkit and manages connections to the Library Server and, optionally, to the Resource Managers.*

- *eClient—a browser-based thin client that provides the GUI to all of the current DB2 Content Manager repositories across all platforms. It provides support for attribute-based, Boolean or full-text search, transforming and viewing of a broad range of content formats, graphical and text-based annotations and version control.*
- *Client for Microsoft® Windows®—the desktop client that provides out-of-the-box support for high-volume, high-performance applications. Capabilities include full-text search options, full support for multi-valued attributes and version control for annotations.*

The modular architecture of DB2 Content Manager is fully Unicode-enabled and optimized to maintain secure central management control. It supports a range of configurations and environments, from small workgroups to geographically dispersed organizations with thousands of users. DB2 Content Manager Enterprise Edition runs on the following platforms:

- *IBM AIX®*
- *Microsoft Windows 2000/2003*
- *Red Hat Enterprise Linux*
- *SUSE LINUX Enterprise Server*
- *Sun Solaris Operating Environment*

In addition to running on DB2

Universal Database, DB2 Content Manager Version 8.3 supports Oracle Database 9i. DB2 Content Manager Version 8.3 also supports the latest industry standards and protocols, including HTTP, SOAP, FTP, RTSP, JDBC, ODMA and SQL.

### **Robust and open framework**

DB2 Content Manager Enterprise Edition is designed to be fully open. Because it publishes a robust set of APIs, it makes the full spectrum of content management functionality available to any application, including ERP and CRM. It also features a common, yet powerful set of APIs, including Java, JavaBeans and C++, which handle different types of content for unified search, retrieval, workflow, access control management and system administration.

### **Secure and easy to manage**

DB2 Content Manager provides a common system administration interface for administering content, servers, users and groups, as well as federated access to DB2 Content Manager distributed repositories. This reduces costs and improves manageability.

With DB2 Content Manager, you can

expect no less than the most comprehensive, open and scalable platform to manage your important business information assets. DB2 Content Manager can streamline information management across your organization to increase productivity and help your business respond faster to customer and market needs. According to James Bowman, Vice President, Information Systems, FedEx Trade Networks, "Our DB2 Content Manager solution has transformed our business. We can now be much more responsive to our customers while lowering our operating costs, which will enable us to recover our investment fully in just one year."

### **For more information**

Please contact your IBM marketing representative or an IBM Business Partner, or call 1-800 IBM-CALL within the U.S. Also, visit our Web site at [ibm.com/software/data/cm/cmgr/mp](http://ibm.com/software/data/cm/cmgr/mp)



© Copyright IBM Corporation 2005

IBM Corporation  
Silicon Valley Laboratory  
555 Bailey Avenue  
San Jose, CA 95141  
U.S.A.

Printed in the United States of America  
03-05  
All Rights Reserved

AIX, DB2, Domino, IBM, the IBM logo, Lotus, Lotus Notes, the On Demand Business logo, Tivoli and WebSphere are trademarks of International Business Machines Corporation in the United States, other countries or both.

Microsoft and Windows are registered trademarks of Microsoft Corporation in the United States, other countries or both.

Java and all Java-based trademarks are trademarks of Sun Microsystems, Inc. in the United States, other countries or both.

Other company, product or service names may be trademarks or service marks of others.

References in this publication to IBM products or services do not imply that IBM intends to make them available in all countries in which IBM operates.

Printed in the United States on recycled paper containing 10% recovered post-consumer fiber.



GC27-1478-03