



IBM Rational Brand

Rational and System i

Andrew Ireland
Binary Computer Services Ltd
Application Modernisation Specialist

Happy 20th Birthday AS/400



My Memories

Silverlake or Olympic
Whiz, Bang & Wallop
The Moose
Act of God

On the Minds of Top Executives Worldwide



CEO Challenges

- Process Efficiency
- Meeting Customer Expectations
- Employee Productivity
- Security & Privacy

CIO Challenges

- Aligning IT & business goals
- Building responsiveness and agility into the organization through IT
 - Enable IT staff to be more effective



Existing Realities (*“Where are you now...”*)

**70% Business Logic sits
within Legacy Systems**



**Need for Legacy & Browser
Applications to co-exist**

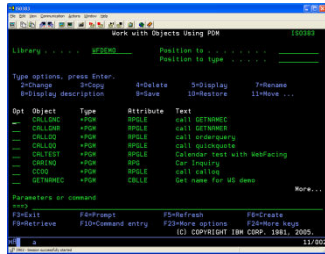


**Legacy Applications will be
around in 5 years time**

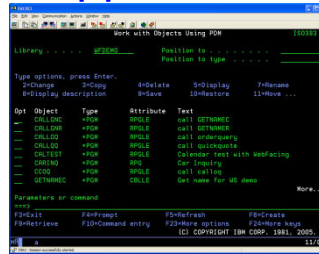


Is this your System i Infrastructure?

PDM/SEU



Applications



Query/400



Do you use WDSC?

Customers are asking, can we.... ?

Leverage existing assets?

Discover and gain control over our existing enterprise application portfolio?

Identify assets for reuse in a Service Oriented Architecture?

Leverage modern architectures?

Create services easily from existing code, including CICS, IMS, i5/OS and 5250 terminal applications?

Define new services for all deployment platforms from initial design to implementation?

Leverage existing skills and attract new skills?

Exploit new technologies and innovation without retraining existing staff that knows the business?

Utilize new employees on any project independent of target platform?

Leverage common development environment across siloed development teams?

Lower costs due to elimination of duplicate tools and processes?

Realize improved end-to-end communication and traceability across the entire lifecycle?

Leverage my investments?

Reduce maintenance costs, freeing resources to work on new projects?



Other

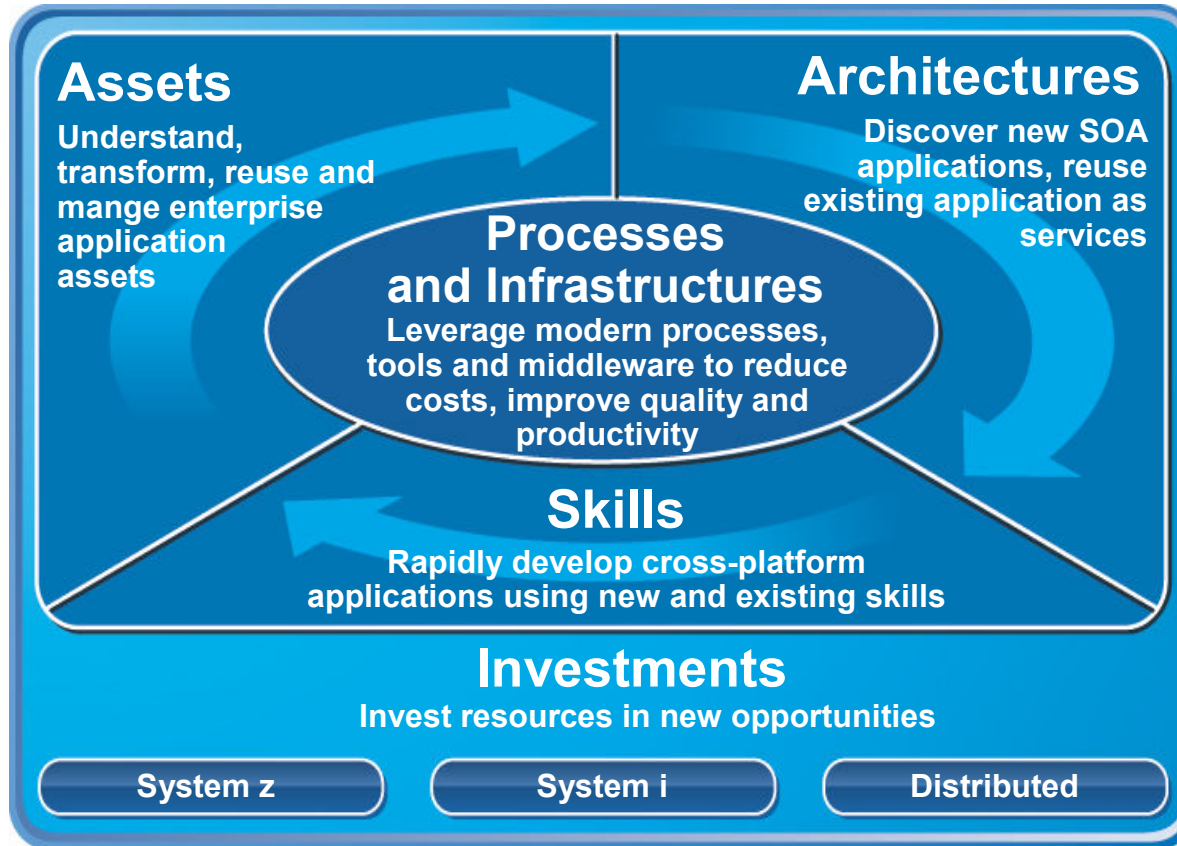
The Challenges of Modernization



To enable flexibility, IT must overcome challenges such as:

- ▶ No electronic inventory of current IT assets
- ▶ Complex application architectures
- ▶ Skills lock-in
- ▶ Islands of development
- ▶ No flexibility for new investments

Enterprise Modernization – Solution Overview

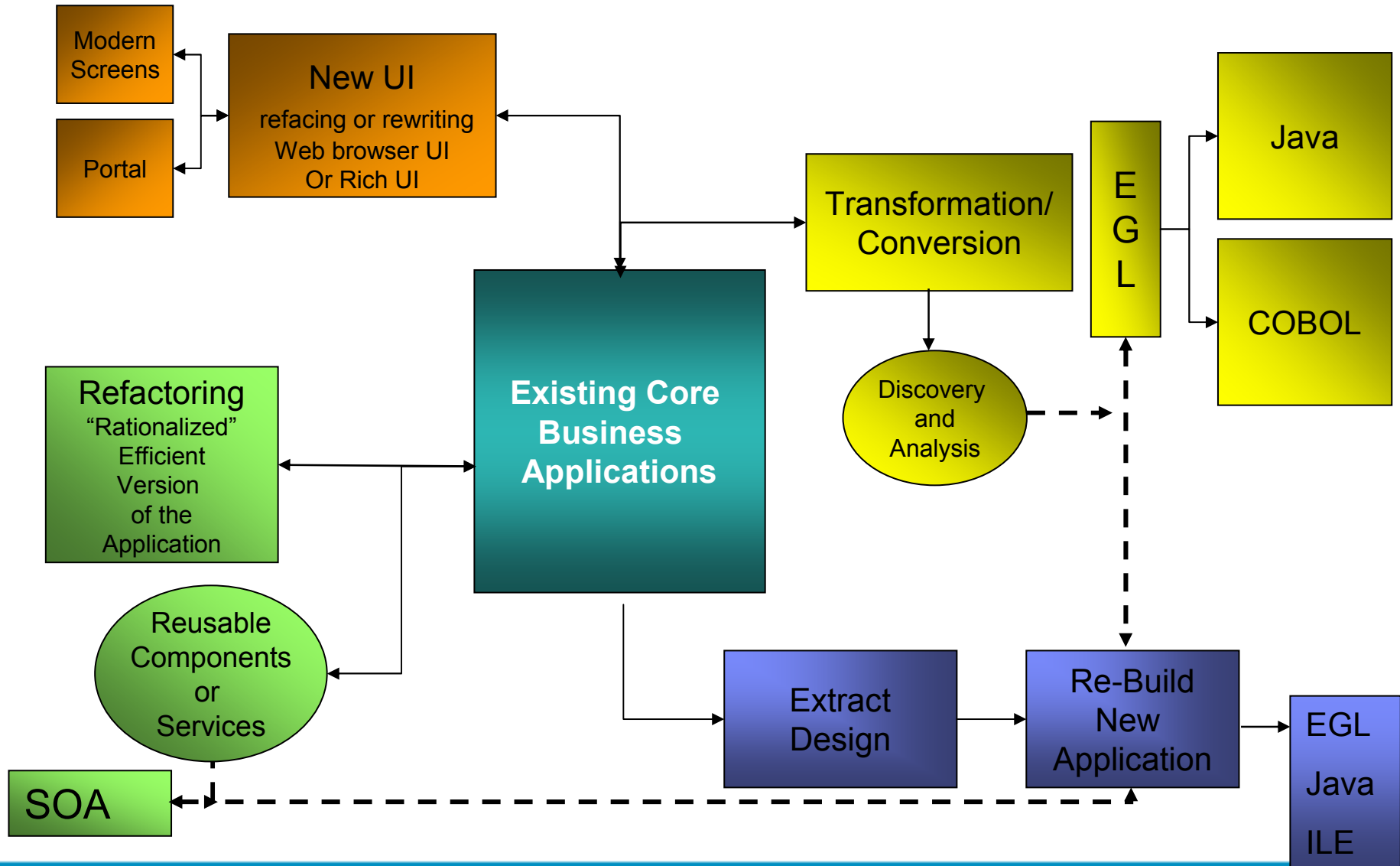


- ✓ *Leverage value in existing assets*
- ✓ *Drive innovation with technology advancements*
- ✓ *Leverage existing and new skills on multi-platform projects*
- ✓ *Improve responsiveness of systems & people*
- ✓ *Reduce maintenance costs*

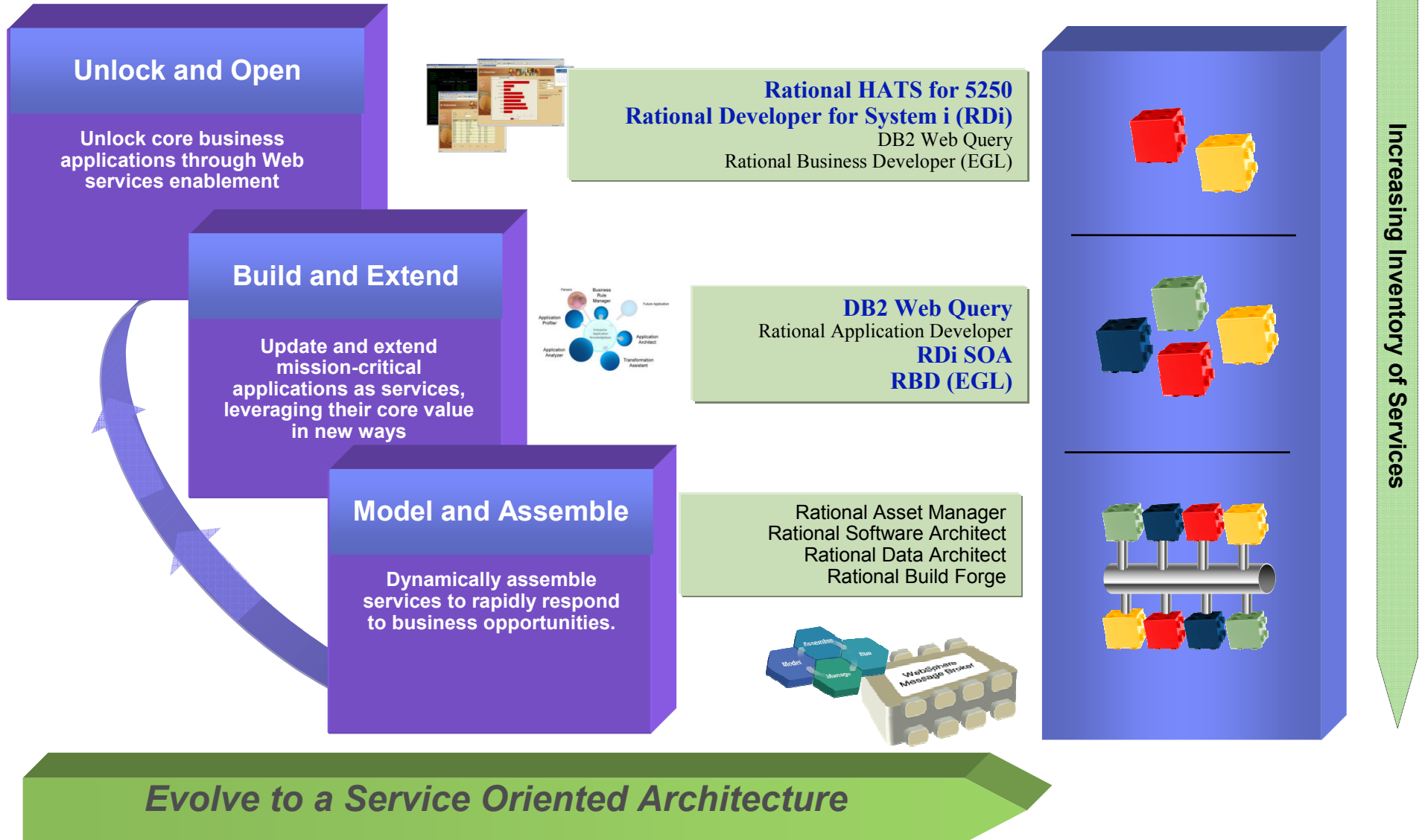
<http://www-306.ibm.com/software/info/developer/solutions/em/systems/i/index.jsp>



Spectrum of Options for Application Modernization



IBM's Developer's Roadmap



Rational and System i

New Rational Organization

Enterprise Modernization

i5/OS Compilers and Tools transferred to Rational

- Application development tools in same division for all platforms

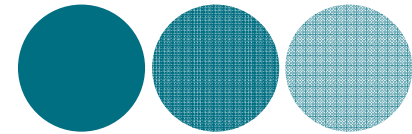
Focused on

System i and z customers

Business Application Developers

Bringing products to System i with native “i” OS support!

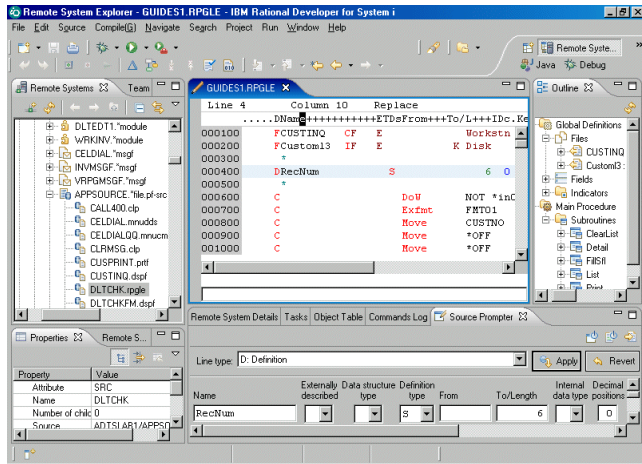
Seamless platform independent tools and technologies for all supported systems.





Modernize Your IDEs

Achieve high productivity with modern development

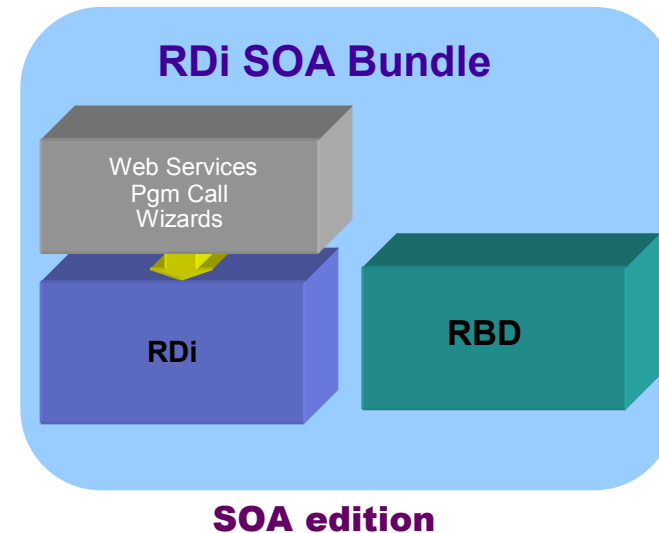
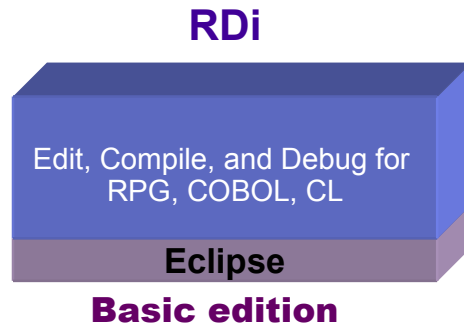


- Use modern IDEs to develop and maintain code
 - ▶ Rational Developer for System i (RDi) **New!**
 - ▶ Rational Developer for System i for SOA Construction (RDi SOA) **New!**
 - ▶ Rational Business Developer Extension (RBDe)
 - ▶ Rational Application Developer (RAD)

■ Benefits of a modern IDE

- ▶ Syntax highlighting and code assist
- ▶ Error detection and debugging services
- ▶ Multi-platform and off-platform edit, compile, and debug
- ▶ Recruit new developers w/ IDE built on open standards

New Rational products: RDi & RDi SOA



New Rational products

RDi – lightweight Eclipse based development tool for RPG, COBOL, and CL programs

Includes LPEX, RSE, and End to End Debugger

New features include: Application Diagrammer and the Screen Designer

RDi SOA – EGL, SOA, Web tools

RDi + Rational Business Developer (RBD) with EGL

Tools for Web Design

Web Services from RPG/COBOL

Bundle for developers who need end-to-end web and SOA solutions

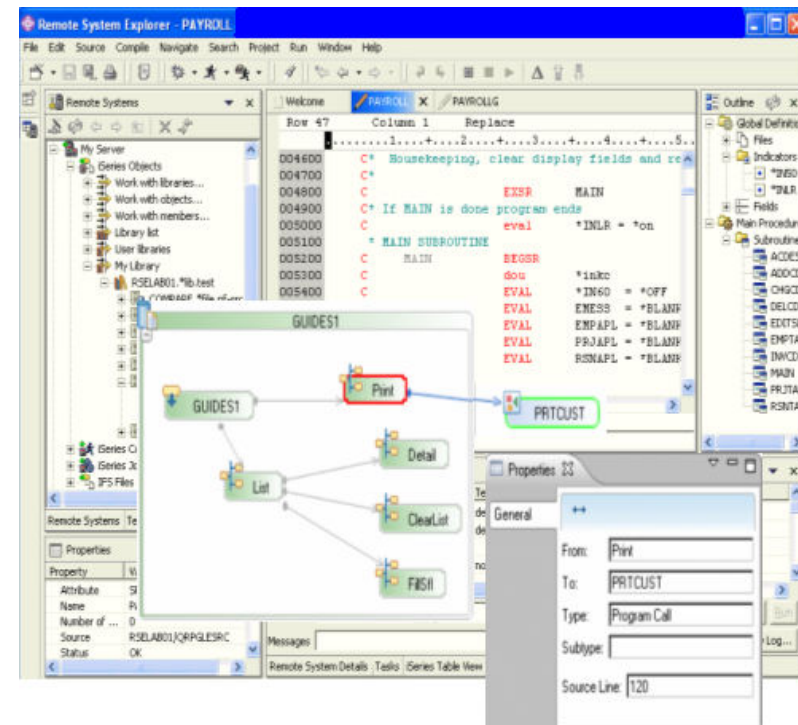
HATS for 5250 Applications – WebFacing and HATS

RAD - Advanced Java Development (J2EE)

IBM Rational Developer for System i v7.1

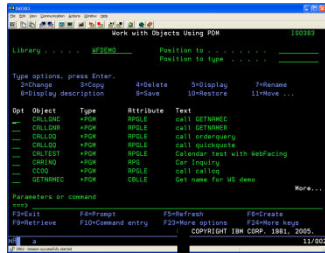
Open, modular and modern solutions for developing traditional RPG and COBOL applications for i

- **Rational Developer for System i offers lightweight and high performance edit, compile and debug capabilities to develop traditional RPG, COBOL and CL applications for i**
- **System i customers looking for a low learning curve solution to exploit existing business logic**
- **What's new in v7.1?**
 - Application diagram enhancement now includes support for CL, program calls and functional zoom
 - Screen Designer tech preview
 - White-Box Direct Program Call runtime built on top of toolbox
 - Complete J2EE application development with RDi and Rational Application Developer or Rational Software Architect
 - Pre-requisite tooling for integrating JCA Connectors, wizards and tools to leverage the Java Toolbox, and many other Java specific features

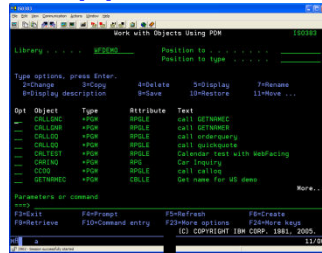


System i Infrastructure Applications

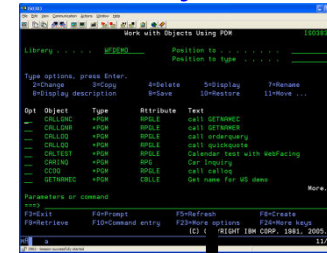
PDM/SEU



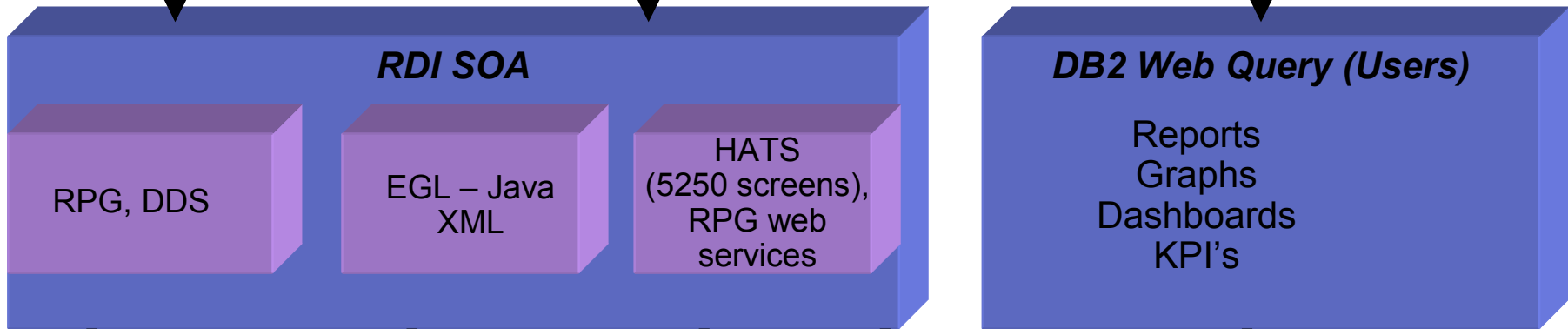
Applications



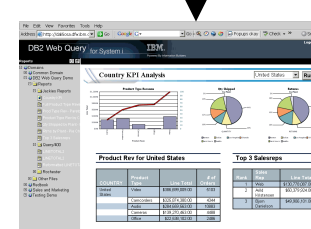
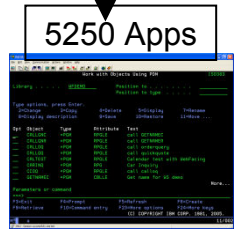
Query/400



Development



Applications

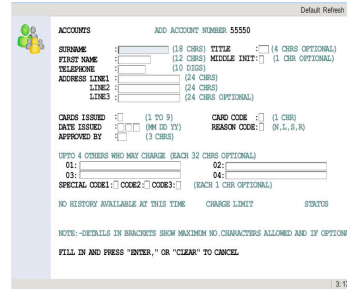




Reface an existing UI with HATS

- **Quick ROI - Host applications can be quickly deployed with a GUI**
- **Low cost - No need to rewrite application**
- **Low risk – Leverage Open, Proven Platforms**
- **Increase productivity and reduce training costs**
- **Improving work flow from multiple applications**

Rich Client



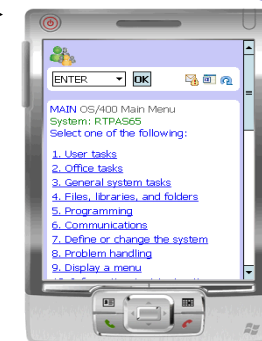
- Integration at the desktop with other Eclipse applications
- Client side processing
- Rich set of user interface widgets
- Built on the standard, open Eclipse foundation

Web



- Zero footprint
- View through your favorite browser

Mobile New!



- Access host applications from mobile devices

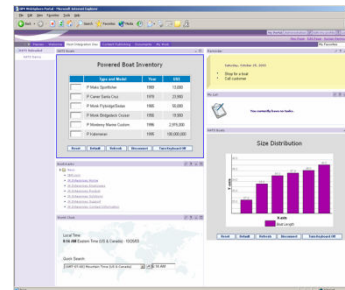
3270 or 5250
Data stream

Web Service



- Build self-service transactions

Portal



- Integration at the glass
- Click-to-Action support



Host Access Transformation Services (HATS)

Rich Client



- Integration at the desktop with other Eclipse-based applications
- Client side processing
- Rich set of user interface widgets
- Supports Lotus Expeditor deployment

Browser



- Zero footprint
- Pure HTML
- Access through your favorite browser, including Internet Explorer and Firefox.

Portal



- Integration at the glass
- Cooperative portlet support
- JSR 168 compliant

Mobile



- Access host applications from mobile devices

Web Services



- Build self-service transactions
- Expose host business processes as Web Services
- Provide controlled access to vital host applications and host data.

- *Quick ROI : Host applications can be quickly deployed with a new user interface*
- *Low cost : No need to rewrite application*
- *Low risk : Leverage open, proven platforms and technologies*
- *Increase productivity and reduce training costs*
- *Improving work flow from multiple applications*
- *Provides integration of host business processes and data with other Web, portal, and rich client applications*



Hawai'i State Judiciary

Hawai'i State Judiciary's Public Access to Court Information

Search Option #1 - Enter the full case ID below.

Case ID

Search

Search Option #2 - Search on a person or business' name.

Last or Business Name

First Name

Search

Search Option #3 - Choose from the selections below and enter the case number as indicated. (Suffix is optional)

Circuit

Case Type

Year

Century

Case Number

Suffix

Oahu

Civil

2000's

01

Search

- Civil
- Circuit Court Criminal
- District Court Regular Civil Claim
- District Court Small Civil Claim
- District Court Temporary Restraining Order
- Equity
- Family Court Appeal
- Family Court Criminal
- Divorce
- Family Court Domestic Abuse
- Family Court Miscellaneous
- Guardianship
- Land (after 1997)
- LAW - initiated prior to statehood w/ activity after 1984
- Mechanic's and Materialman's Lien
- Probate
- Small Estate (before 1995)
- Small Guardianship (before 1995)
- Special Proceedings
- Special Prisoner Proceedings

Print

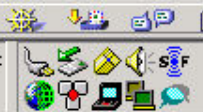
Help

Exit



- Pr...
- 87...
- 87...
- Sa...
- Pa...
- C:...
- Ca...
- Pr...
- Se...
- C:...
- ky...
- zill...
- Ho...

99%



3:16 PM

From this

```

PURCHASE ORDER INQUIRY          Criteria (1 of 2)  PUI123-1

Select scan type
Sequence ?
Scan key ?
Type :      Sub-type :      (Seq. 13 only)

P.O. selection criteria
Stores ?    (Y/N/ )
Service ?   (Y/N/ )
Type ?
Mode - EQ, GE, GT, LE, LT, NE, RG

Criteria      Mode Values
PO number    :
Date written :
PO amount    :
Whs #        ?
Buyer        ?
Vendor       ?
Description filters :

Enter-Continue Page Up Key CK5-Refresh CK7-End
CK15-Inquiry    CK17-Closed POs  CK18-Open & closed POs

PO scan seq. types
1=PO# (Headers)   9=Req by
2=PO# (Details)  10=RFQ #
3=Vendor #        11=Contract
4=Buyer           12=GL acct
5=Purchase item  13=Entity
6=Commodity      14=W.O. #
7=Date ascending 15=Project
8=Req #          16=Dte dsend

Other file scan seq types
21=Vendor #  22=Vendor alpha

Limit ? Y (Y/N)
Level ? D (H/D/B) +

MA*      a
04/014
    
```

To this

Purchase Order Inquiry - Criteria (1 of 2) PUI123-1

Scan Type

Sequence

Scan Key

Type

Sub Type

Selection Criteria

Stores

Service

Type

Criteria

	Mode	Values
PO Number	<input type="text"/>	<input type="text"/>
Date Written	<input type="text"/>	<input type="text"/>
PO Amount	<input type="text"/>	<input type="text"/>
WHS Number	<input type="text"/>	<input type="text"/>
Buyer	<input type="text"/>	<input type="text"/>
Vendor	<input type="text"/>	<input type="text"/>
Description Filters	<input type="text"/>	<input type="text"/> <input checked="" type="checkbox"/> Limit Level <input type="text"/> <input type="text"/> <input type="text"/>

What is HATS mobile device support for v7.1?

HATS transformation applications can now be accessed by pervasive devices such as cellular phones, data collection terminals, and Personal Digital Assistants

This allows for the HATS developer to:

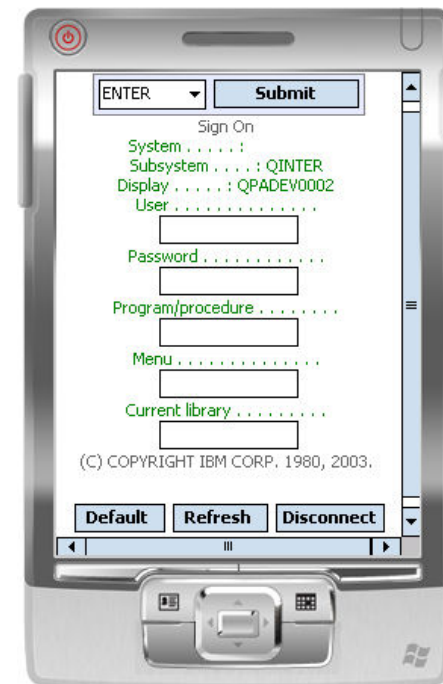
- Customize and transform individual screens

- Add business logic to screen interactions

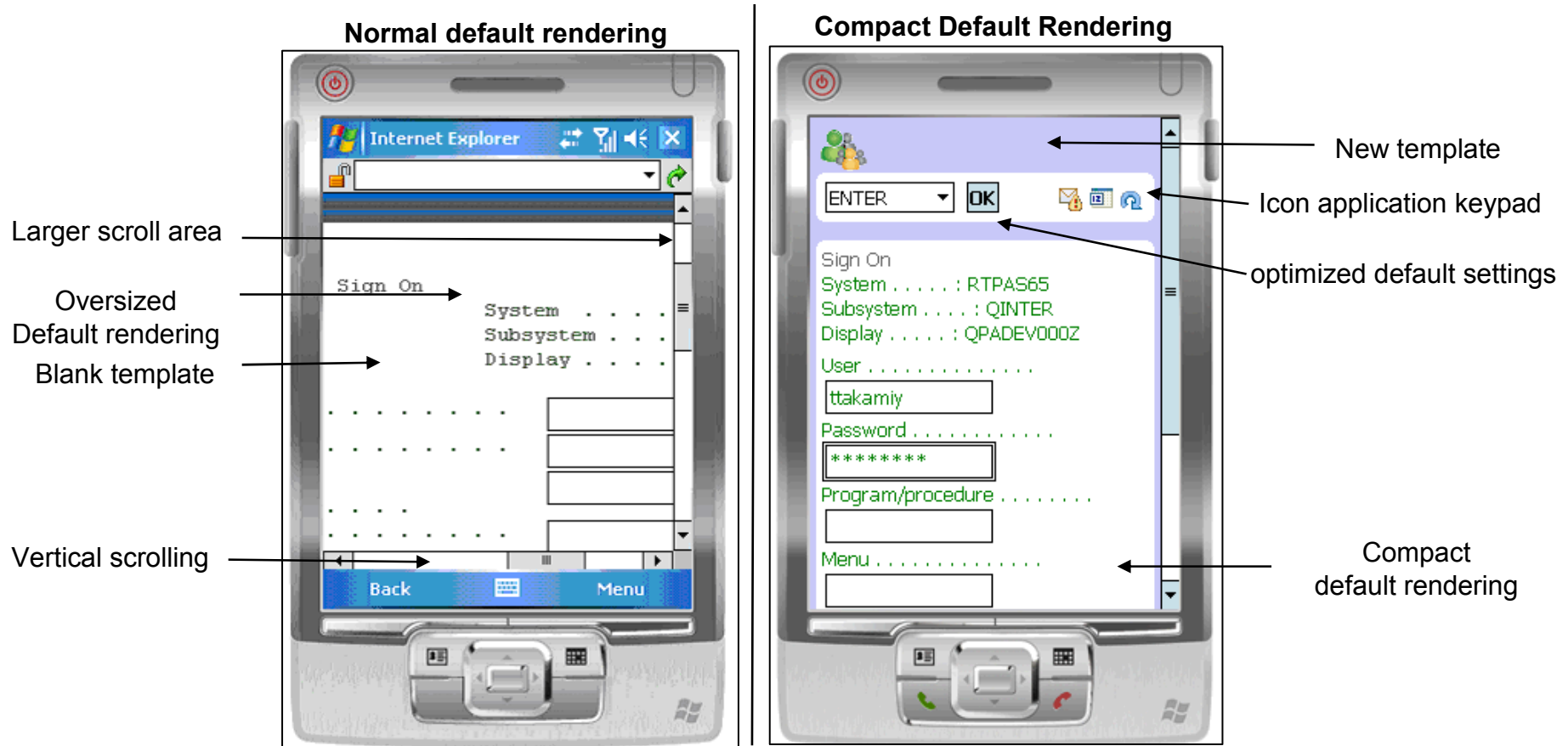
- Enhance the presentation, layout, and flow of the original host systems

Supported browser: Internet Explorer Mobile 5.0 or later

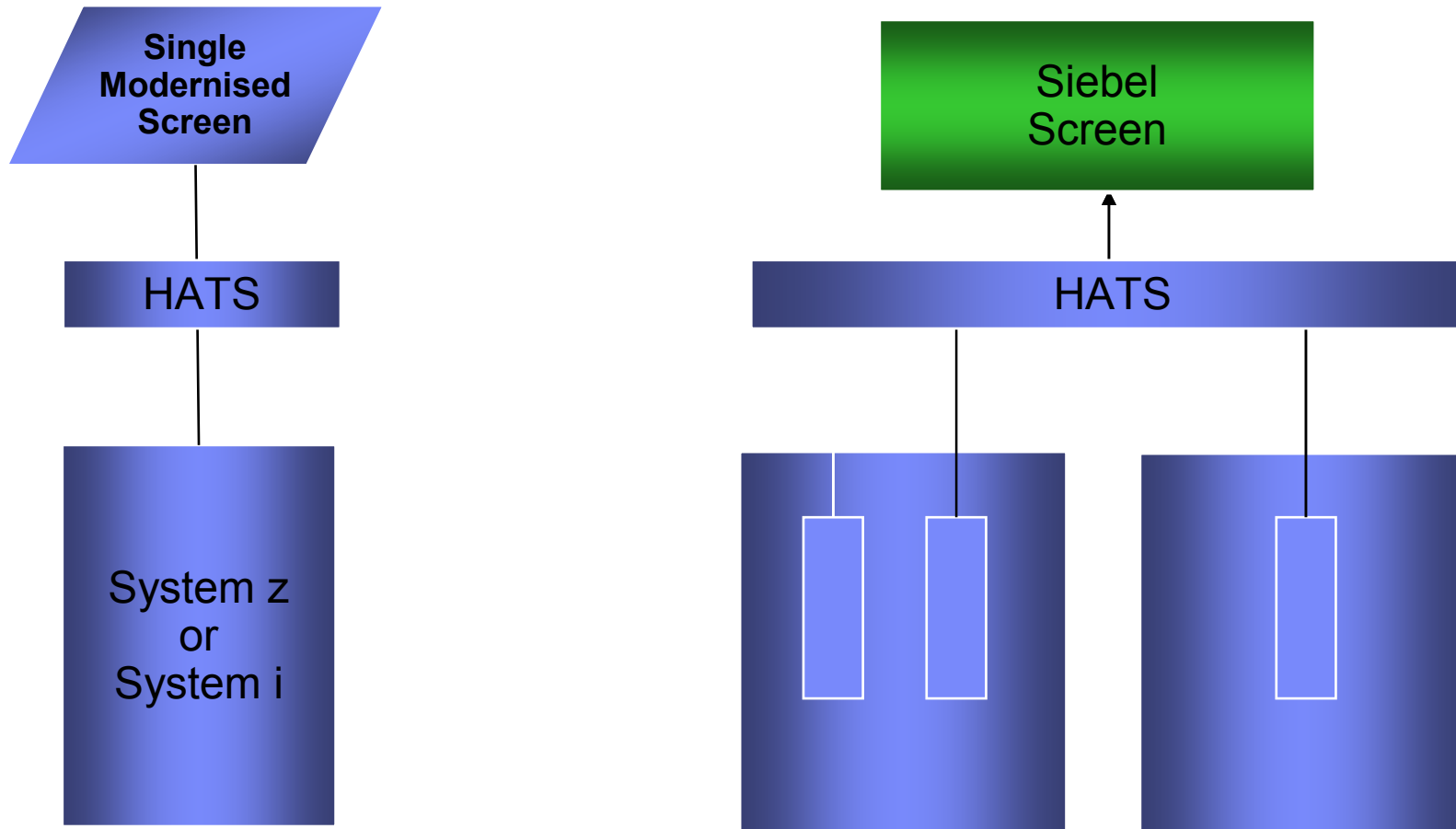
Reminder: HATS Integration Object or Web service data can also be used in conjunction with mobile devices



Compact Default Rendering Example

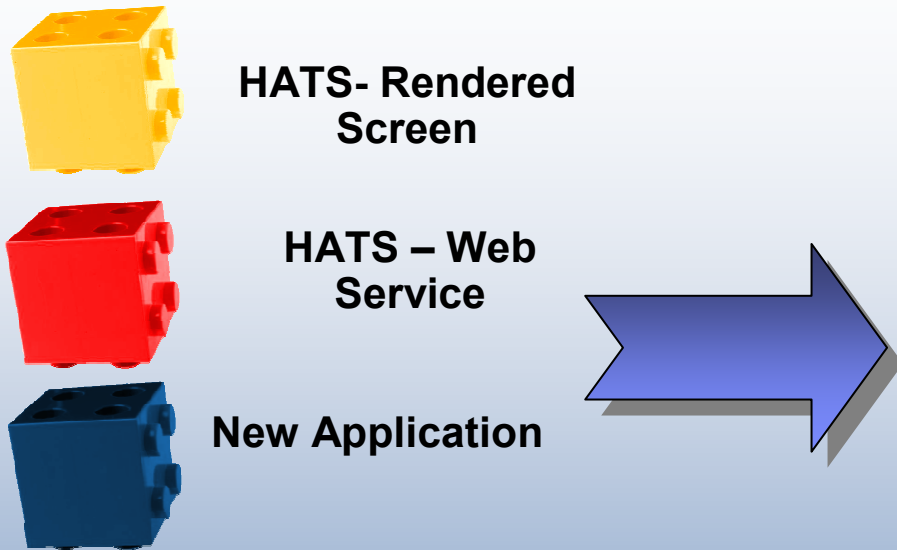


HATS is not just a new screen.....

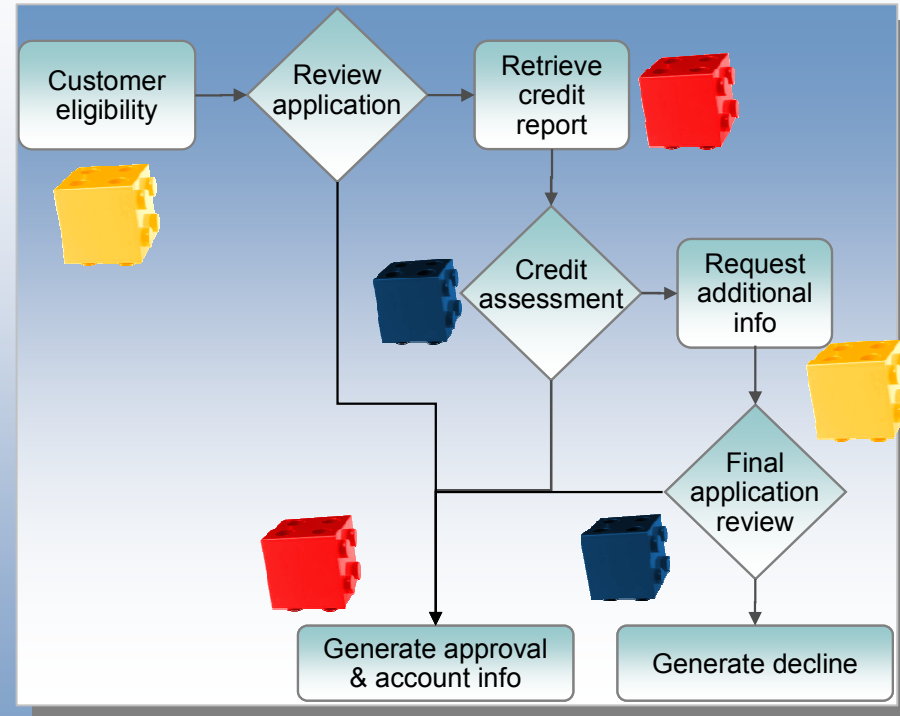


Connect To Multiple Sessions in Many Back End Applications

Now that we have rendered the applications in HATS...

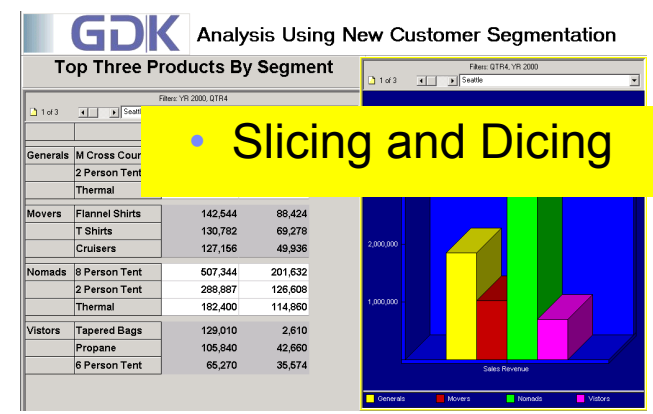
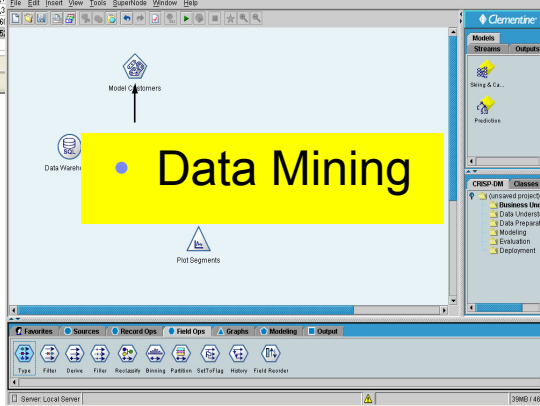
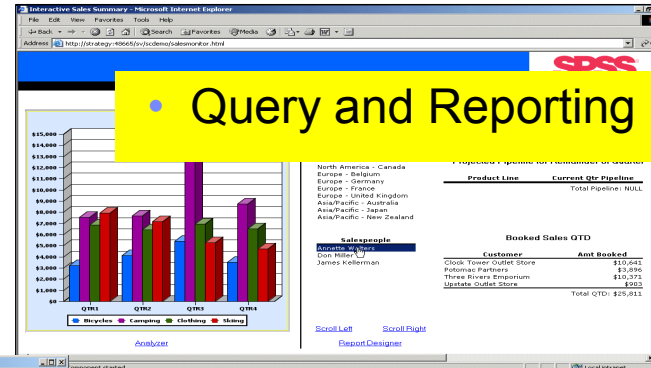
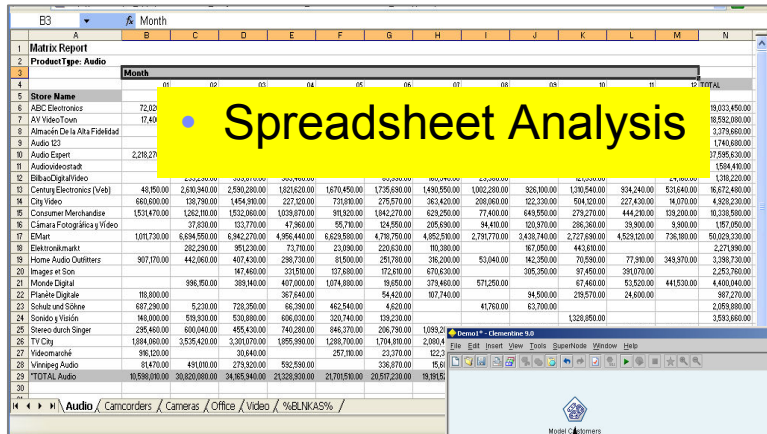


it can be used as building blocks in an Web Services world....



Business Process is implemented by integrating services

Why are IBM Bring out DB2 Web Query?



- Budget/Planning
- Sales/Inventory Analysis
- Claims Analysis
- Demand Forecasting
- Market Basket Analysis
- Financial Reporting (compliance)
- Customer Relationship Marketing
- Business Performance Measurement

- Loan Risk Assessment
- Profitability Analysis
- Supplier Analysis
- Balanced Scorecard

IBM DB2 Web Query for System i Powered By Information Builders

- IBM has delivered a System i web based query and report writing program product that replaces IBM Query for iSeries (Query/400)
- Free upgrade (Limited Users) – if on SWMA
- New Software Maintenance cost for QU2
 - Base Program Product - 5733-QU2
 - Report Assistant
 - Graph Assistant
 - Power Painter
 - Spreadsheet integration
 - Web-enable Query/400 reports
 - Federated queries (DB2 for i5/OS)
- Requires V5R4

The screenshot displays the DB2 Web Query for System i interface. The main content area shows a 'Country KPI Analysis' report for the United States. The report includes three charts: a line chart for 'Product Type Revenue' showing revenue over time for different product types; a pie chart for 'Qty Shipped' showing the distribution of quantities across different plants; and another pie chart for 'Returns by Plant' showing the distribution of returns. Below the charts are two tables: 'Product Rev for United States' and 'Top 3 Salesreps'. The interface also features a navigation pane on the left with a tree view of reports and domains, and a top navigation bar with a search bar and a 'Run' button.

For more details, refer to:
<http://www.ibm.com/systems/i/software/db2/webquery>

Product Type	Revenue	Count
Audio	\$284,659,563.00	10883
Cameras	\$139,270,463.00	4488
Office	\$22,538,102.00	2486

Salesrep	Revenue
Danielson	\$40,300,101.00

IBM DB2 Web Query for System i Powered By Information Builders

- Additional Chargeable IBM Features

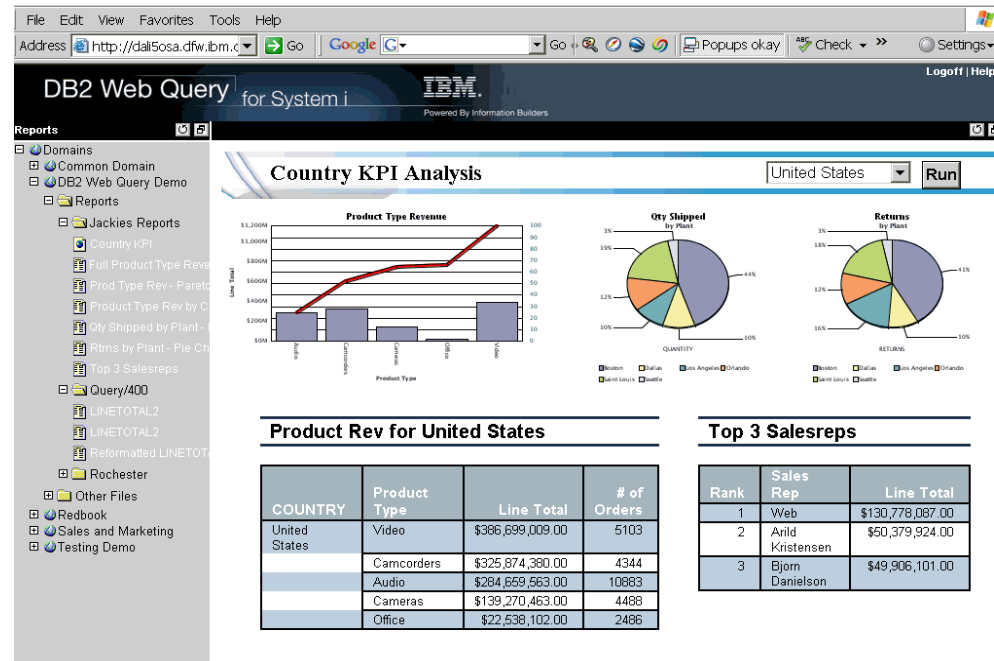
- Active Reports (Disconnected)
- On Line Analytical Processing
- Developer's Workbench

- New Modules from IBM

- 19th September 2008
- Report Broker
- Developers Tool Kit

- Developing 3rd Party Ecosystem

- Rodin
- Databorough
- Etc...



IBM DB2 Web Query for System i Powered By Information Builders

Report Broker – New Module

- Flexible Scheduling of Reports
 - Automatically Run and Distribute Reports
 - Days, Minutes and Weeks etc.
 - Distribution Lists
 - Blackout Days
- Output to various types
 - Email
 - Excel,
 - File
 - Active Report
- Report Bursting - You can set distribution lists to e-mail particular parts of the query

IBM DB2 Web Query for System i Powered By Information Builders

DB2 Web Query Software Development Kit – New Module

- Embed reports directly into line of business applications.
- Enable DB2 Web Query for service oriented architecture (SOA)
- Invoke a report in a CL command
- Build customized applications that integrate with DB2 Web Query reports
- Extend business intelligence into day-to-day operations
- Manage DB2 Web Query Report Broker jobs through customized Web applications

Combined with Report Broker delivers powerful report development platform

From this

5250 Application

```

Session A - [24 x 80]
File Edit View Communication Actions Window Help
TR0020          Change Policy          Todays Date: 7/03/08
COLEJ          Time: 15:47:23

Region . . . . . 1 Northern
Policy reference . . . . . CA-6123-MD

Customer Name . . . . . Michael Dyson
Sex Type . . . . . M
Date of Birth . . . . . 1/01/1980

Last Quote Date . . . . . 25/10/2006
Policy Start Date . . . . . 3/12/2006
Policy Due Date . . . . . 2/12/2007

Policy Type . . . . . Car
Policy Level . . . . . G GOLD
New Policy Indicator . . . . . Y

Premium Value . . . . . 700.00
Policy Excess . . . . .
Voluntary Excess . . . . .

F3=Exit F12=Cancel F16=Accept
    
```

Query/400

```

Session A - [27 x 132]
File Edit View Communication Actions Window Help
Display Report
Report width . . . . . : 981
Shift to column . . . . .

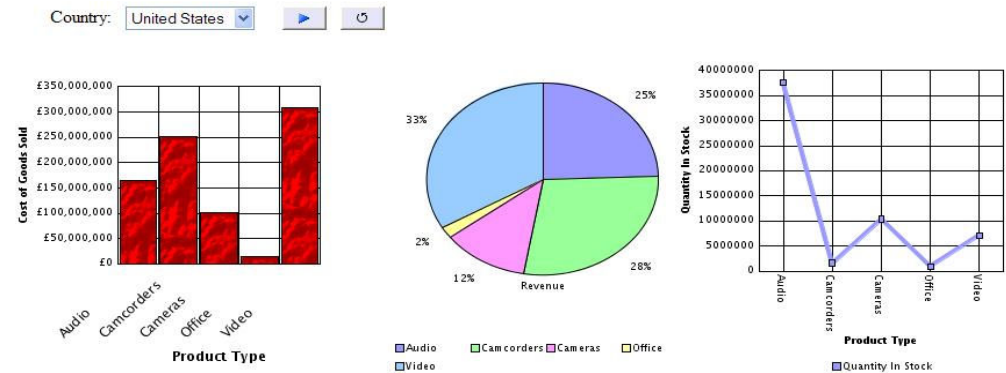
Position to line . . . . .
Line . . . . . 1 . . . . . 2 . . . . . 3 . . . . . 4 . . . . . 5 . . . . . 6 . . . . . 7 . . . . . 8 . . . . . 9 . . . . . 10 . . . . . 11 . . . . . 12 . . . . .
Comp. Region Office Supplier Old Supplier Supplier Supplier
Code Code Code Account Number Account Name Address Address
000001 AB CD EF ASUP002 ASUP001 Ace Suppliers Ltd. Ace House
000002 AB CD EF BBU1001 Briggs Builders Ltd. 12-18 Sutton Street
000003 AB CD EF BCOM001 Binary Computers Ltd. Binary House
000004 AB CD EF COUS001 David Test Account Somewhere
000005 AB CD EF CSUP001 Cottrell Suppliers Ltd. Cottrell House
000006 AB CD EF FRED001 Frederick Bulsara Ltd 23 - 27 Lower Avenue
000007 AB CD EF PPAI001 Potter Painters & Sons Potters House
000008 AB CD EF PPIN001 Painters & Plasterers Incorp. 34 - 36 Shallow Way
000009 AB CD EF PPLA001 Potters Plasterers & Sons Potters House
000010 AB CD EF RDEC001 Regan Decorators Ltd 1 Hollow Lane
000011 AB CD EF RPAI001 Regan Painters 12 St Johns Road
000012 AB CD EF SBUI001 Smith Builders & Sons 225 Longton Avenue
000013 AB CD EF WCOM001 Welling Computers Ltd. Welling House
000014 AB XER0002 XEROX (IRELAND) LTD., DUBLIN INDUSTRIAL ESTATE,
000015 II II II WSHM001 W H Smiths 1 High Street
000016 II BOOT001 Boots The Chemist 1 High Street
000017 II TIME001 Time Software 11 High Road
More...

F3=Exit F12=Cancel F19=Left F20=Right F21=Split F22=Width 80
    
```


To this

HATS Application

DB2 Web Query

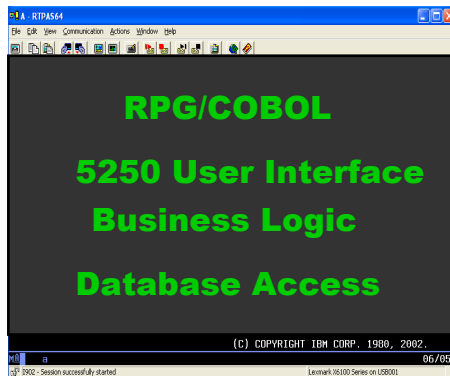


		Product Sales							
		A	B	C	D	E	F	G	H
1	Product Sales								
2									
3	Prepared On 02/21/08 at 09.11.58								
4									
5		Quarter 01		Quarter 02		Quarter 03		Quarter 04	
6	Product Type	Revenue	Goods Sold	Revenue	Goods Sold	Revenue	Goods Sold	Revenue	Goods Sold
7	Audio	\$101,609,831.00	\$58,235,630.00	\$76,545,082.00	\$44,411,910.00	\$63,106,299.00	\$36,291,750.00	\$43,350,000.00	\$23,631,410.00
8	Subtotal For Audio	\$101,609,831.00	\$58,235,630.00	\$76,545,082.00	\$44,411,910.00	\$63,106,299.00	\$36,291,750.00	\$43,350,000.00	\$23,631,410.00
9	Camcorders	\$96,556,362.00	\$74,430,330.00	\$98,055,322.00	\$75,478,300.00	\$73,118,720.00	\$56,095,510.00	\$58,118,720.00	\$3,230,160.00
10	Subtotal For Camcorders	\$96,556,362.00	\$74,430,330.00	\$98,055,322.00	\$75,478,300.00	\$73,118,720.00	\$56,095,510.00	\$58,118,720.00	\$3,230,160.00
11	Cameras	\$43,458,045.00	\$31,509,560.00	\$40,640,688.00	\$29,454,490.00	\$32,785,719.00	\$23,631,410.00	\$22,318,720.00	\$3,660,000.00
12	Subtotal For Cameras	\$43,458,045.00	\$31,509,560.00	\$40,640,688.00	\$29,454,490.00	\$32,785,719.00	\$23,631,410.00	\$22,318,720.00	\$3,660,000.00
13	Office	\$7,723,818.00	\$4,886,795.00	\$6,057,599.00	\$3,798,265.00	\$5,088,505.00	\$3,230,160.00	\$3,660,000.00	\$3,660,000.00
14	Subtotal For Office	\$7,723,818.00	\$4,886,795.00	\$6,057,599.00	\$3,798,265.00	\$5,088,505.00	\$3,230,160.00	\$3,660,000.00	\$3,660,000.00

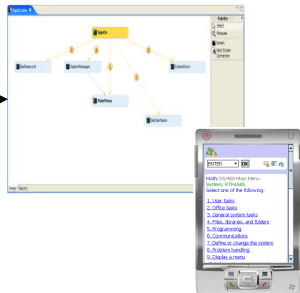


Leverage Existing Applications with HATS and RBD

Existing Programs

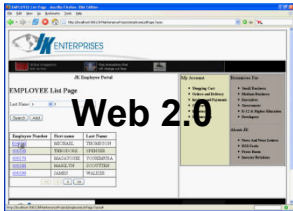
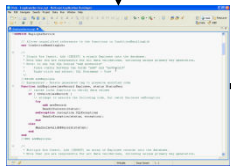


HATS for 5250 Applications WDHT



Web Service

- Leverage existing 5250 applications with HATS (including 3rd party ISV applications).
- Generate Web Services from HATS and consume them in custom Web 2.0 applications using EGL.



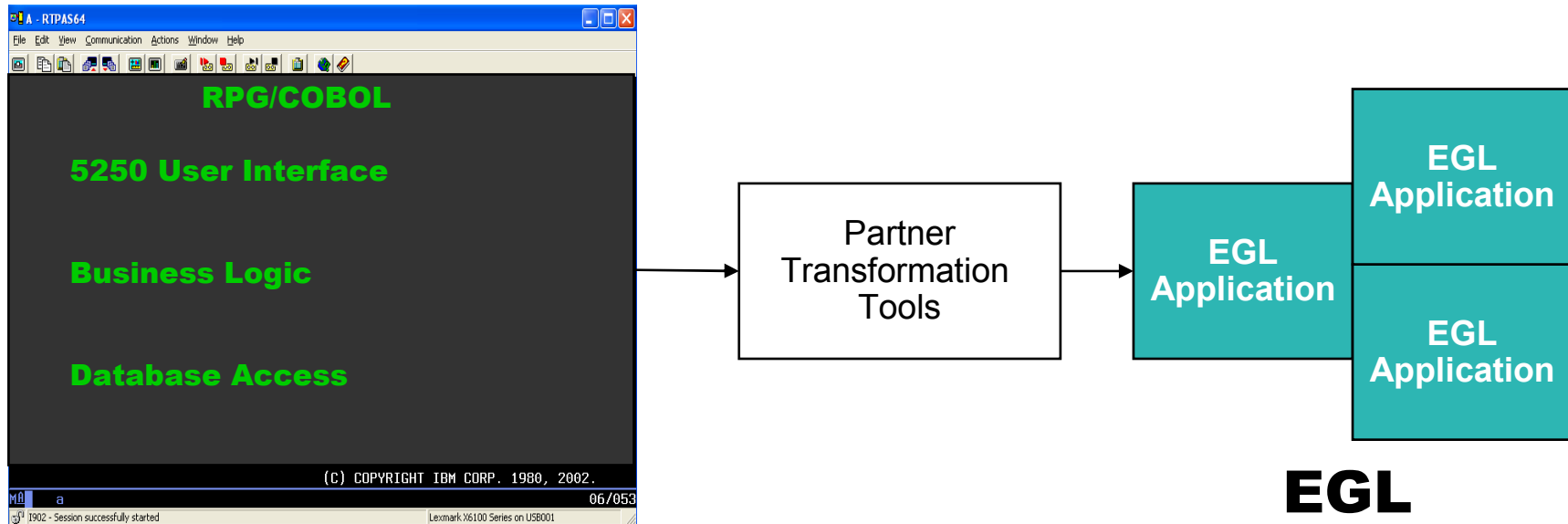
Web Services
Modern Applications
Document Printing
much more...

EGL



Modernize your Application through Transformation

Monolithic Programs



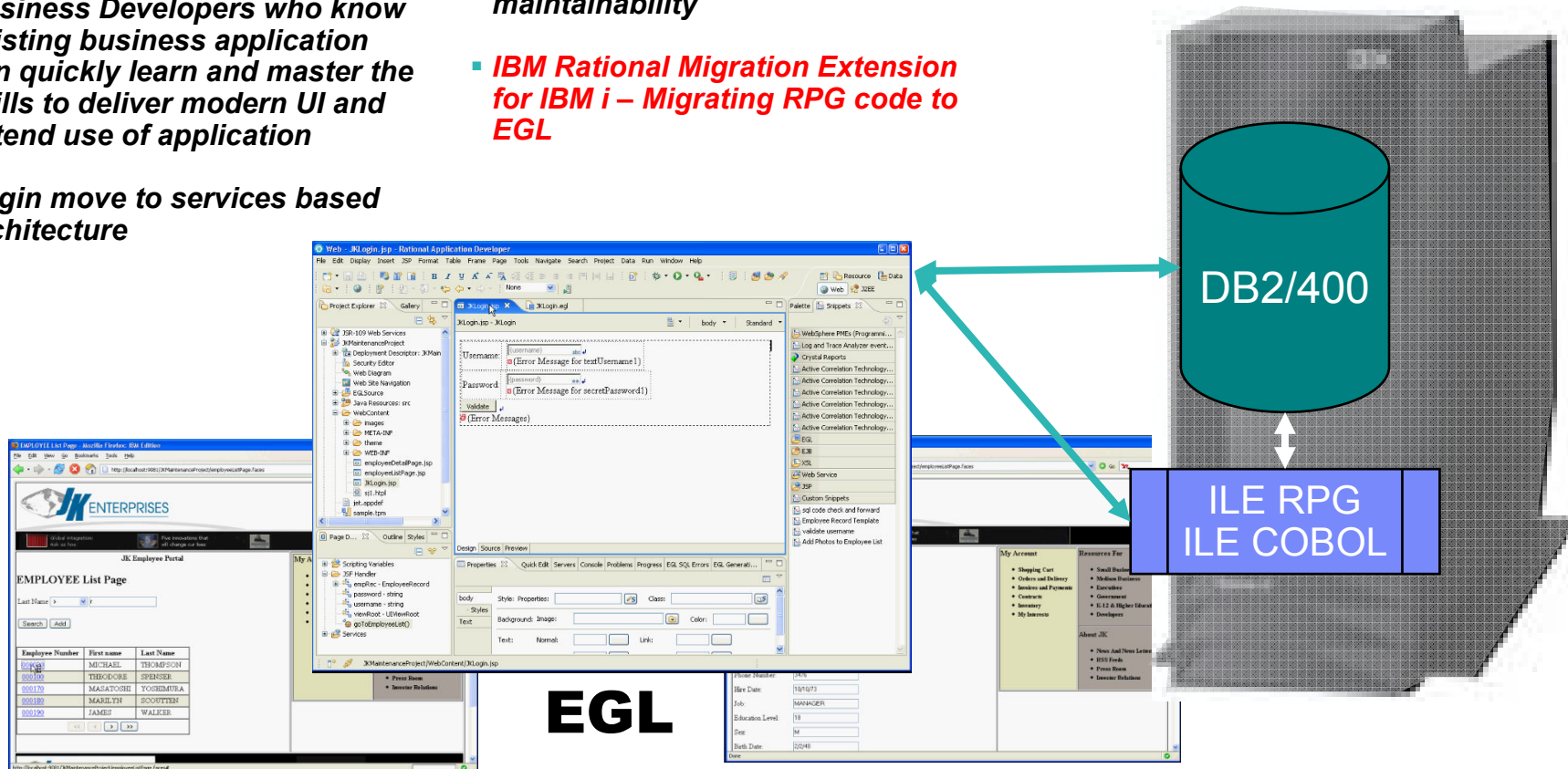
- *Eliminate Skills silos – allowing IT to freely shift resources across projects according to business priorities*
- *Create applications that are not locked into a specific computing environment*



Modernization with IBM's Enterprise Generation Language (EGL)

- **IBM strategic web development environment for RPG & Cobol Developers**
- **Leverage existing core business applications**
- **Business Developers who know existing business application can quickly learn and master the skills to deliver modern UI and extend use of application**
- **Begin move to services based architecture**
- **Platform Independence**
- **Learning curve can be mastered by existing RPG staff easily**
- **Language design supports migration of RPG with excellent maintainability**
- **IBM Rational Migration Extension for IBM i – Migrating RPG code to EGL**

Rapid Web & Rich Client UI Enablement





IBM Rational Migration Extension for IBM i

- IBM Rational Migration Extension for IBM i delivers a highly **automated way** to leverage and **reuse business-critical RPG applications**

- **Transforms RPG** into the IBM Rational Business Developer featuring **EGL** technology.

- It provides a **cost-effective way** to **modernize** and **transform** these systems and breathe new life into applications that were considered to be on life support.

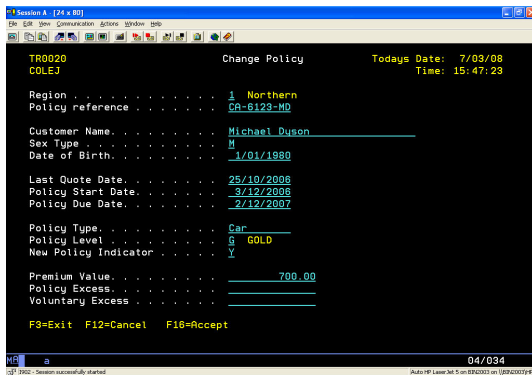
- Migration of the RPG code is **performed as a service** with the result being an EGL Project (fully converted EGL source code).

IBM Rational Migration Extension for IBM i allows the RPG applications that have been transformed into EGL to execute properly as generated **Java** or **COBOL** code.

Next Stage

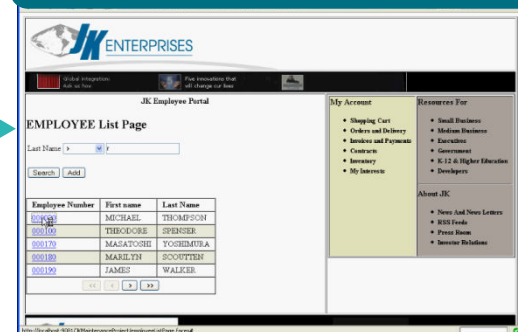
1. Initial Code Analysis
2. POC
3. Main Project

EGL → **JAVA**



IBM Migration Offering

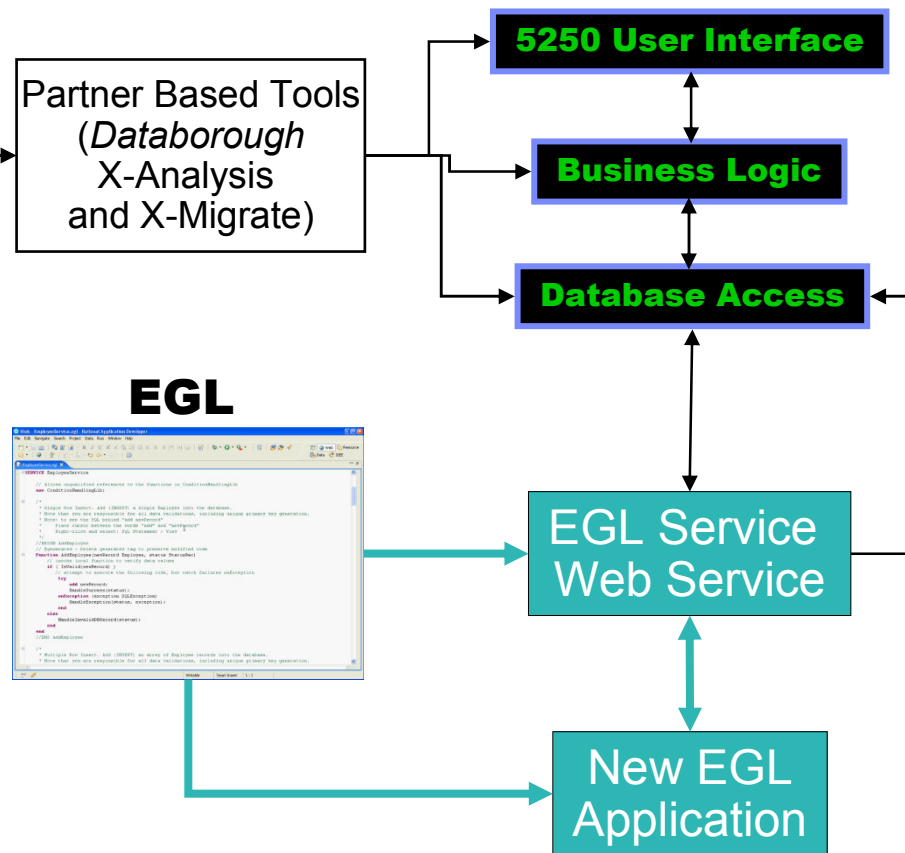
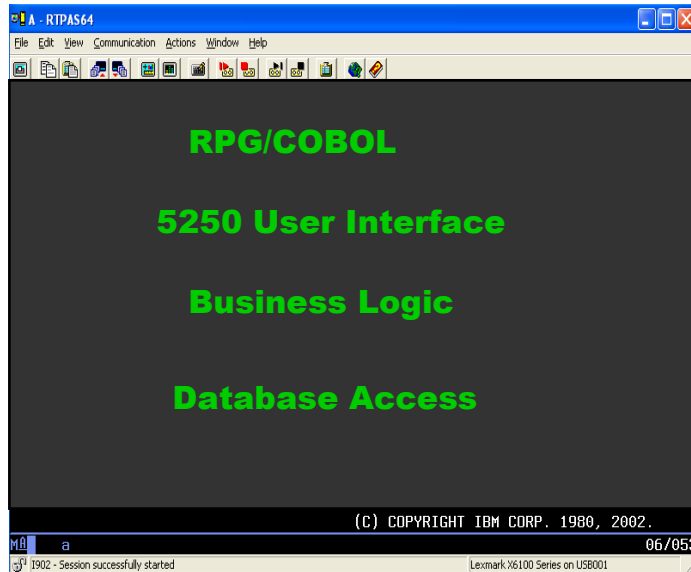
Rapid Web & Rich Client UI Enablement





Modernize your architecture through refactoring

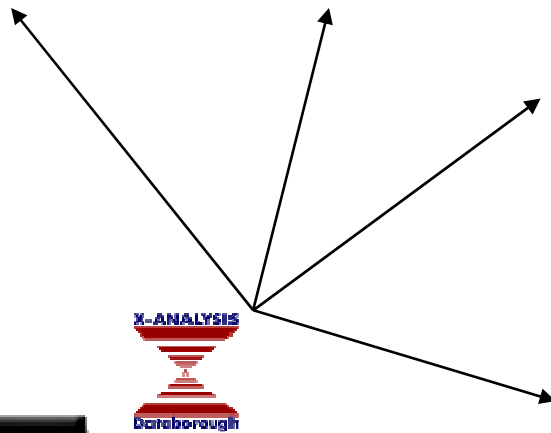
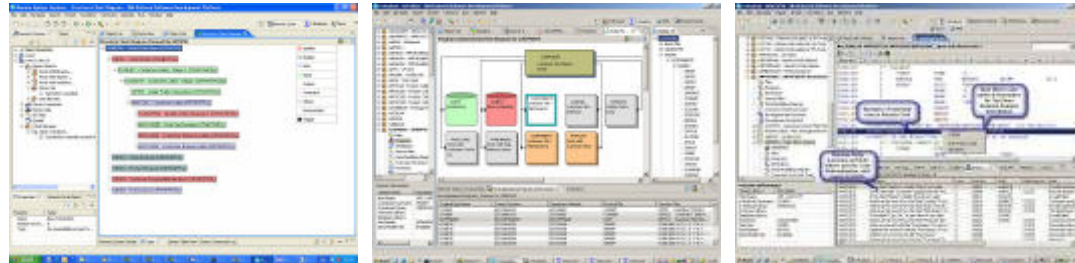
Monolithic Programs



- **Application Rationalization**
- **Create reusable components or services**
- **Fast delivery of new business solutions with available resources**
- **Significantly simplify maintenance, lower error rates, higher quality**
- **Remove barriers to move to SOA**

System i Design Recovery Using X-Analysis

www.daborough.com



```

RPGII   DDS
        undocumented
RPG     COBOL
monolithic
procedural
CL      RPGIII
    
```

- **Application Understanding**

- ▶ Drill Down Structure Charts,
- ▶ Data Flow Charts
- ▶ Overview System Diagrams
- ▶ RPG as Pseudo Code

- **Modern Perspectives**

- ▶ Derived Relational Data Model
- ▶ Business Rules Logic Extraction
- ▶ Screen to Screen flow with Activity and Use Case, Diagrams

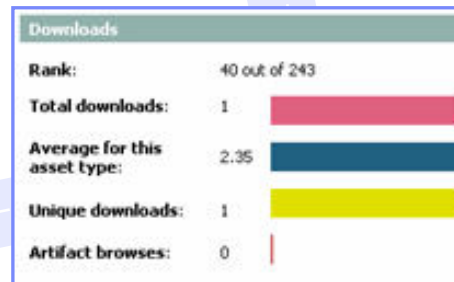
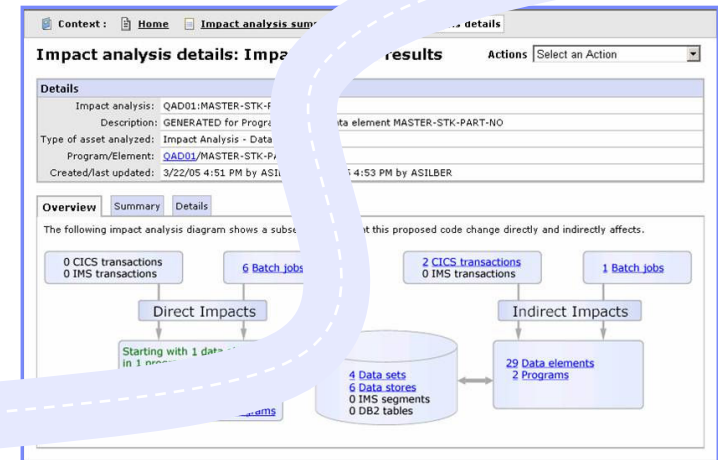
- **Re-Factored Proto-Types**

- ▶ JSF
- ▶ Java Controllers
- ▶ Business Logic Web Services

Modernize Your Asset Management

Discover, understand, and leverage existing applications & services

- Understand and analyze the impact of change across heterogeneous enterprise applications using **Databorough's X-Analysis**
- Manage assets across their lifecycle from design and creation to consumption and change with **Rational Asset Manager (RAM)**
- Deploy and manage runtime services using **WebSphere Service Registry & Repository (WSRR)**



Search for Assets > Tester

General details | Content | Rate and discuss | Statistics

Asset information

Name: Tester Download Now!

My rating: ★★★★★

Average rating: ★★★★★ (1 rating)

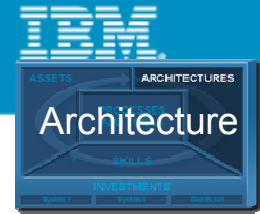
Search for Assets

Search for: [Advanced search >>](#)

Your search and search results: 330 assets found

Filters: none

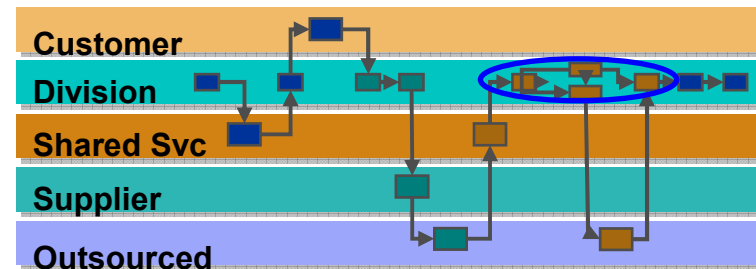
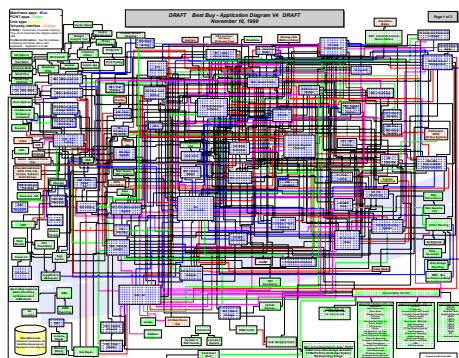
Name	Version	State	TeamSpace	Last modified	Relevance
testCreateWithRAM_connection_asset	1159491744676	Approved	RAM Group	Sep 28, 2006	
testCreateWithRAM_connection_asset	1159491744676	Approved	RAM Group	Sep 28, 2006	
testDownload	1.0	Review	Delta Project Team	Oct 4, 2006	
testDownload	1.0	Review	Delta Project Team	Oct 4, 2006	
Tester	1.0.1.2	Approved	Insurance LOB Testers	Oct 10, 2006	



Modernize Your Architectures

Develop new SOA applications rapidly

- Transform green screen applications to web UIs and/or web services using **Host Access Transformation Services (HATS) for 5250 Applications**
 - ▶ Quickest ROI – get to the web fast!
 - ▶ Generate web services directly from 5250 applications
- Create web services from RPG, COBOL CL, and Java with Web Services wizards using **Rational Developer for System i for SOA Construction (RDi for SOA)**
 - ▶ Create web services wrappers for RPG and COBOL programs
- Rapidly build, publish, and consume web services using **Enterprise Generation Language (EGL)**, included in RDi SOA
 - ▶ Leverage *Service* and *Interface* keywords to re-enforce SOA development principles
 - ▶ Supports i5/OS and J2EE



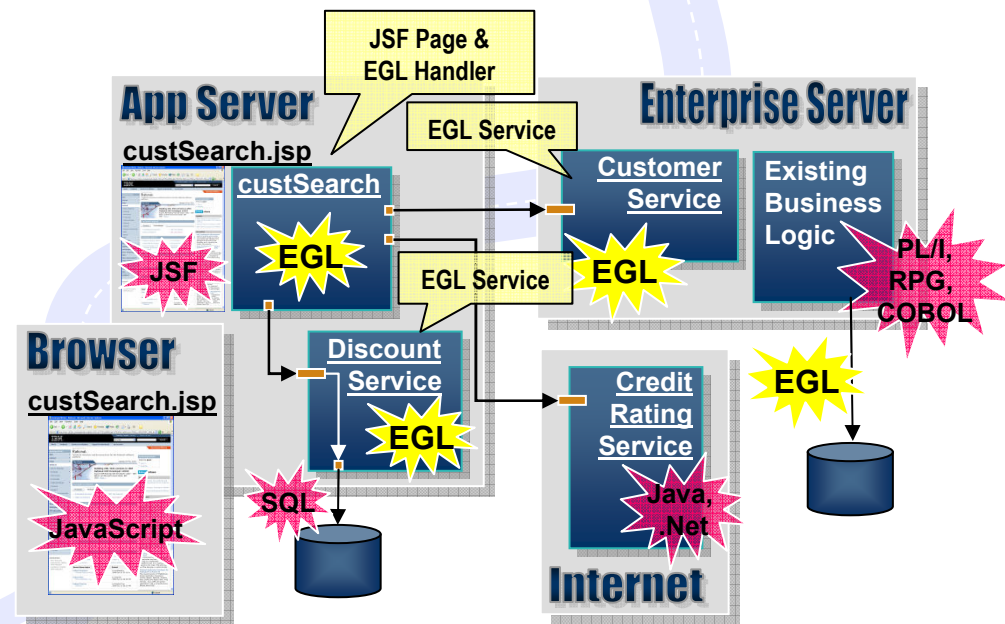


Modernize Your Skills

Powerful tools & abstractions for multi-platform development

- Exploit advances in middleware and technology while writing business applications using **Enterprise Generation Language (EGL)** support in **Rational Business Developer extension (RBDe)**

- Build all elements of leading applications .. “end-to-end” from Web 2.0 to services to batch processes
- Eliminate skill islands – EGL developers are able to develop applications for most platforms: i5/OS, CICS, IMS, z/OS Batch, WAS, Linux, Windows, AIX, HP-UX, Solaris

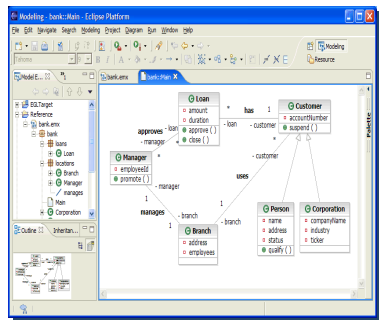


*“Lack of skilled development resources” is the greatest inhibitor to implementing Web Services.
Evans Data Corp., 2007, “Web Services Development Survey, Vol. I”*

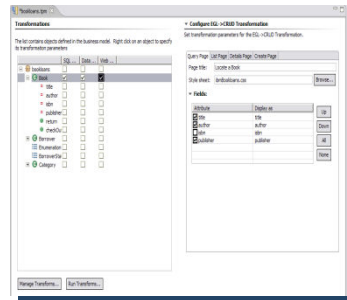
The power of tools: Model Transformations

A new generation of Architected Rapid Application Development

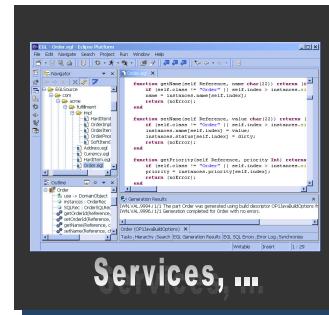
- ▶ Transform UML models to RBD
- ▶ Best way to go...



1. Model



2. Define Transformation Parameters and additional



3. Transform to RBD code

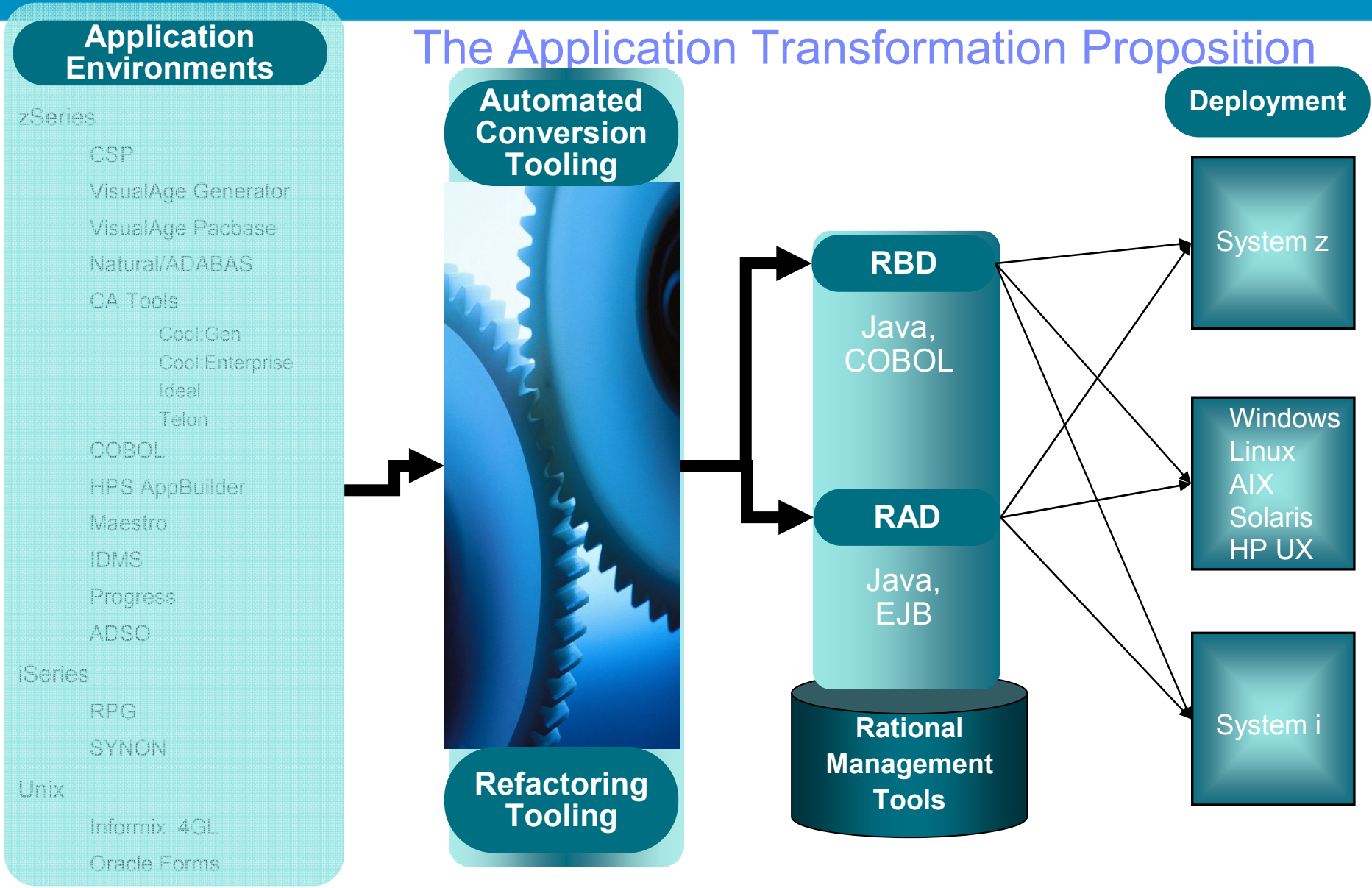


4. Deploy to platform (z, i, or distributed)



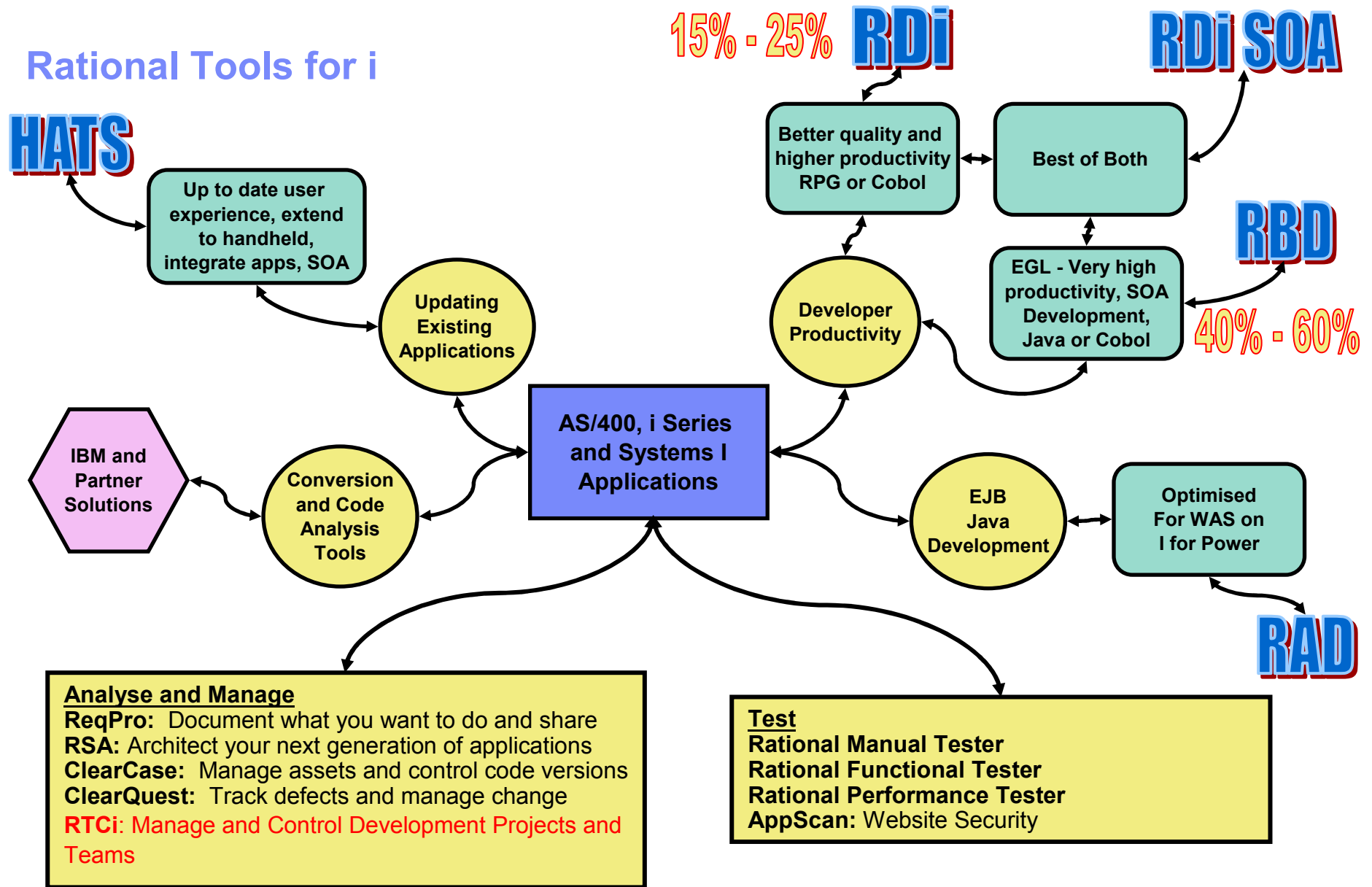
- Traceability from requirements to code
- Create your own transformations
- Transformations enriched by Business Rule Annotation and Transformation Parameters

The Application Transformation Proposition



Windows/.net

Rational Tools for i

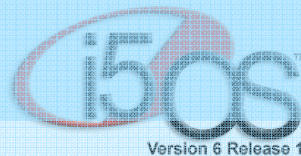
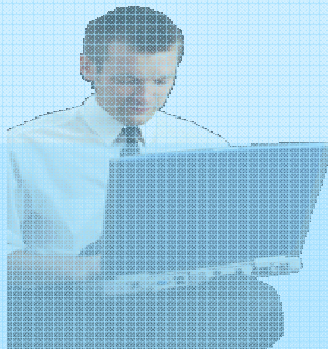


Get started with the System i Sandbox

System i Sandbox

Examples and best practices provide low-risk, practical, hands-on path to understanding

www.ibm.com/rational/modernization



Full version software trials
'Try online' hosted System i environments
Tutorials
Architectural Guidance

Enterprise Modernization - The Road Ahead

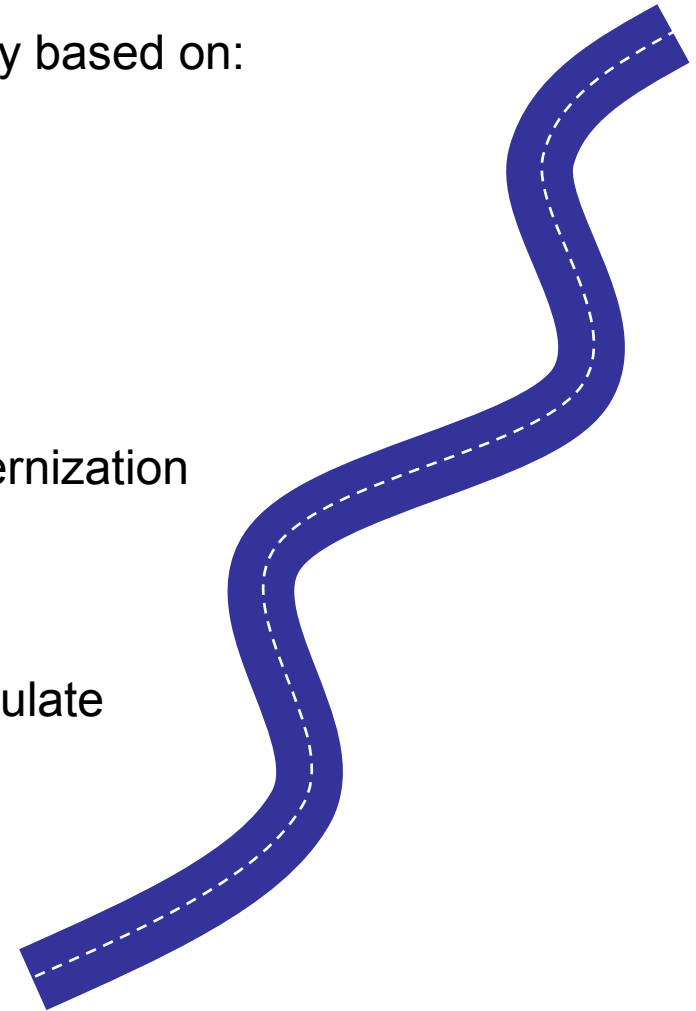
Each customer needs a unique modernization strategy based on:

- Your business requirements
- Your budget
- Your staffing constraints

Choose one or more of the options to build your modernization strategy.

Rational and our business partners can help you formulate your own customized strategy for modernization

Let's look together at our solutions ...





Learn more at:

- [IBM Rational software](#)
- [IBM Rational Software Delivery Platform](#)
- [Process and portfolio management](#)
- [Change and release management](#)
- [Quality management](#)
- [Architecture management](#)
- [Rational trial downloads](#)
- [developerWorks Rational](#)
- [IBM Rational TV](#)
- [IBM Rational Business Partners](#)

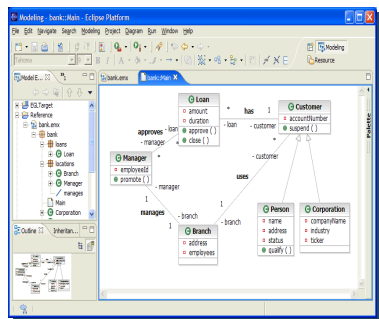
© Copyright IBM Corporation 2007. All rights reserved. The information contained in these materials is provided for informational purposes only, and is provided AS IS without warranty of any kind, express or implied. IBM shall not be responsible for any damages arising out of the use of, or otherwise related to, these materials. Nothing contained in these materials is intended to, nor shall have the effect of, creating any warranties or representations from IBM or its suppliers or licensors, or altering the terms and conditions of the applicable license agreement governing the use of IBM software. References in these materials to IBM products, programs, or services do not imply that they will be available in all countries in which IBM operates. Product release dates and/or capabilities referenced in these materials may change at any time at IBM's sole discretion based on market opportunities or other factors, and are not intended to be a commitment to future product or feature availability in any way. IBM, the IBM logo, the on-demand business logo, Rational, the Rational logo, and other IBM products and services are trademarks of the International Business Machines Corporation, in the United States, other countries or both. Other company, product, or service names may be trademarks or service marks of others.

Rational Business Developer and RDi SOA

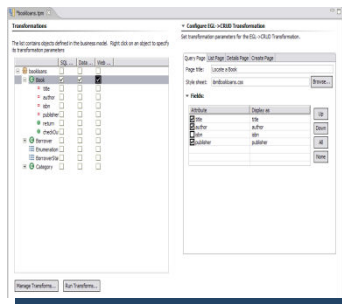
- ▶ Transform UML models to RBD
- ▶ Best way to go...
from **SOA models** to **construction of services**

services deployed on System z, System i, or anywhere else

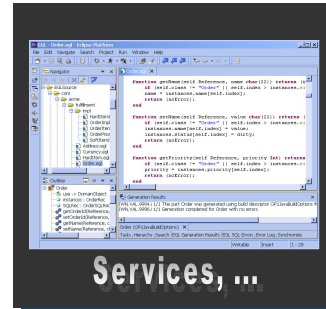
PRODUCTIVITY



1. Model



2. Define Transformation Parameters and additional Business Rules



3. Transform to RBD code

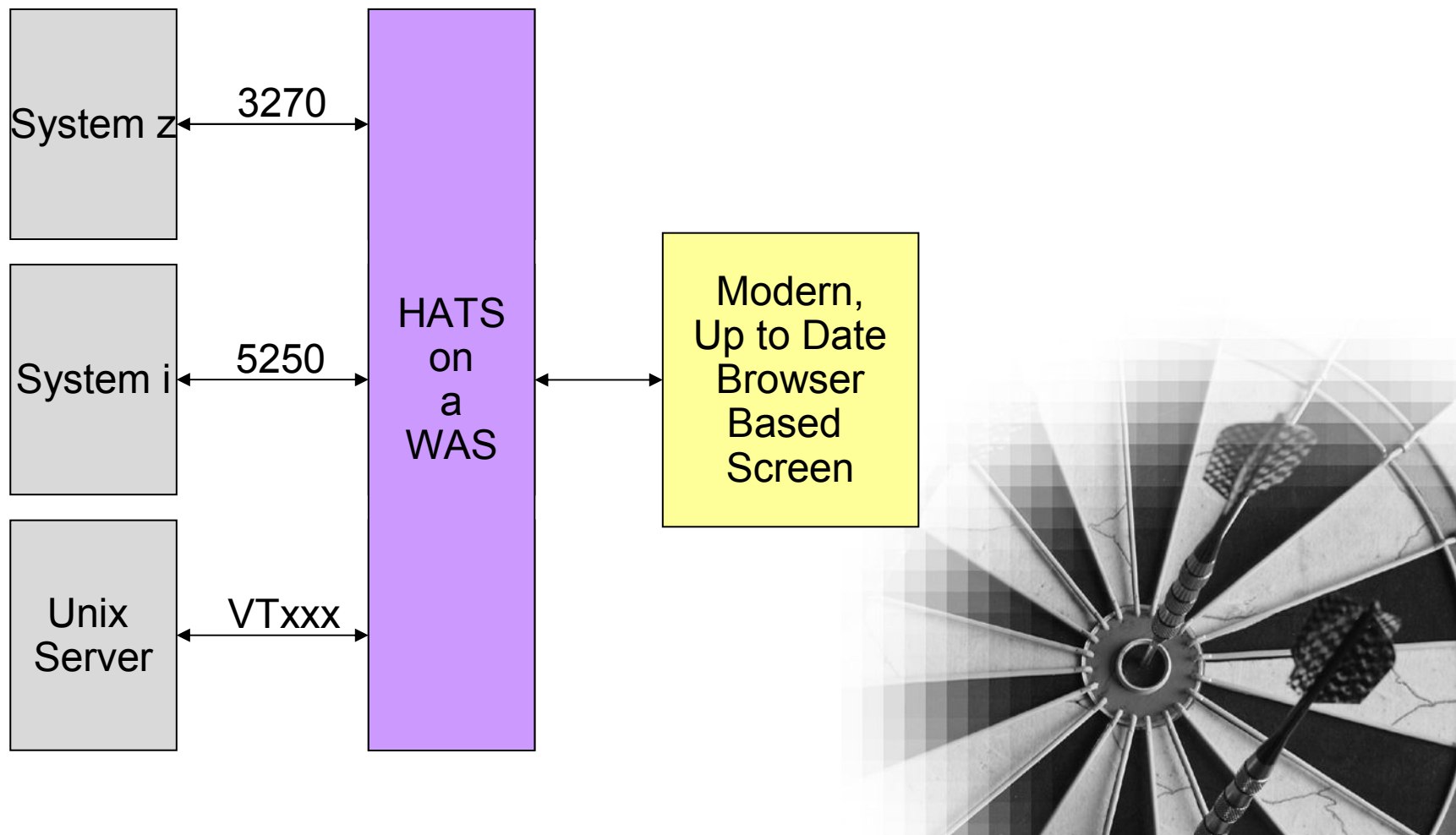


4. Deploy to platform (z, i, or distributed)

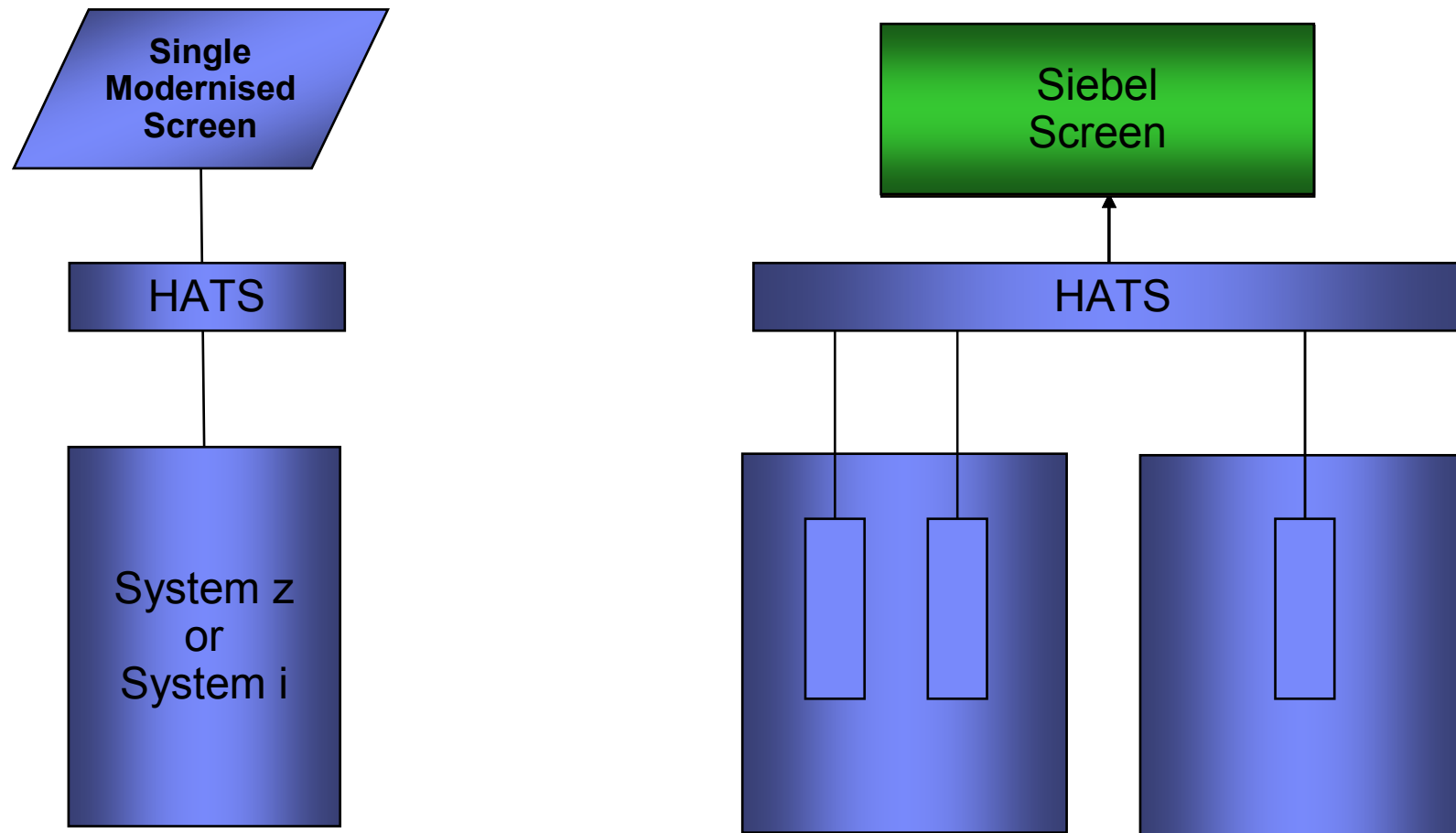
SKILLS

- Traceability from requirements to code
- Create your own transformations
- Transformations enriched by Business Rule Annotation and Transformation Parameters

HATS - what is it?



HATS is not just a new screen.....



Connect To Multiple Sessions in Many Back End Applications