



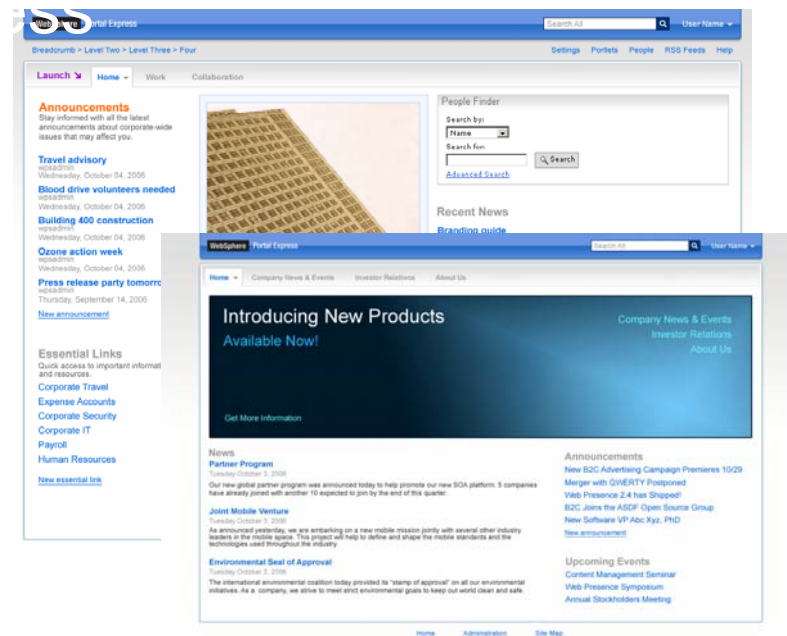
IBM WebSphere Portal Express V6.0

Rob Hodges
Channel Technical Sales
Rob.hodges@uk.ibm.com



What if the people in your company could be immediately more productive?

- **Integrated Portal** : Powerful application Integration platform
- **Document Management**: Share documents easily with others. Works with Microsoft Office
- **Web Content Management**: Easily build, deploy and maintain web sites.
- **Collaboration**: Boost productivity and make better business decisions.
- **Ready to Use**: Time is money, so you need to be up and running, quickly.
- **Built for SMB**: Part of the IBM Express Portfolio.



Some relevant questions for LOB to ask....



Are **documents easily accessible** by those who need them?

Are they **protected** from unauthorized access and data loss?



How can we **bring teams together more quickly**?

How can we **work together on projects, launch products** and **develop new business plans** more efficiently?

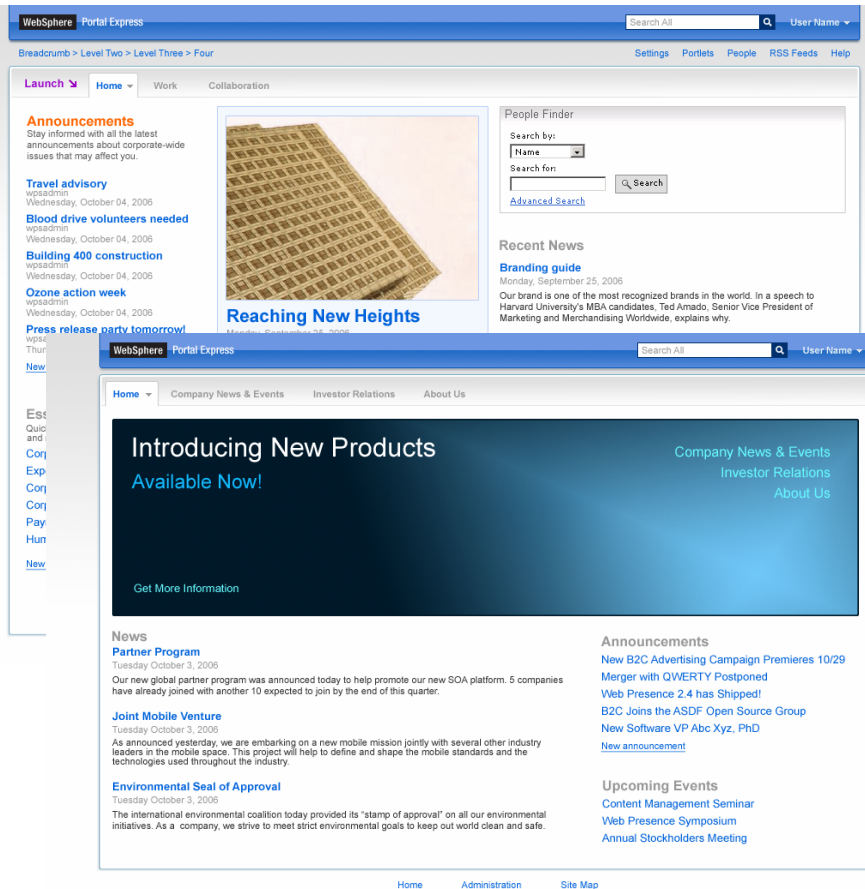


Do our employees, partners and customers have a convenient **central point of access to the applications and information** they need?

How can we easily **introduce new applications** to our employees, partners and customers?

And .. How can I stretch my dollars and reduce my IT burden?

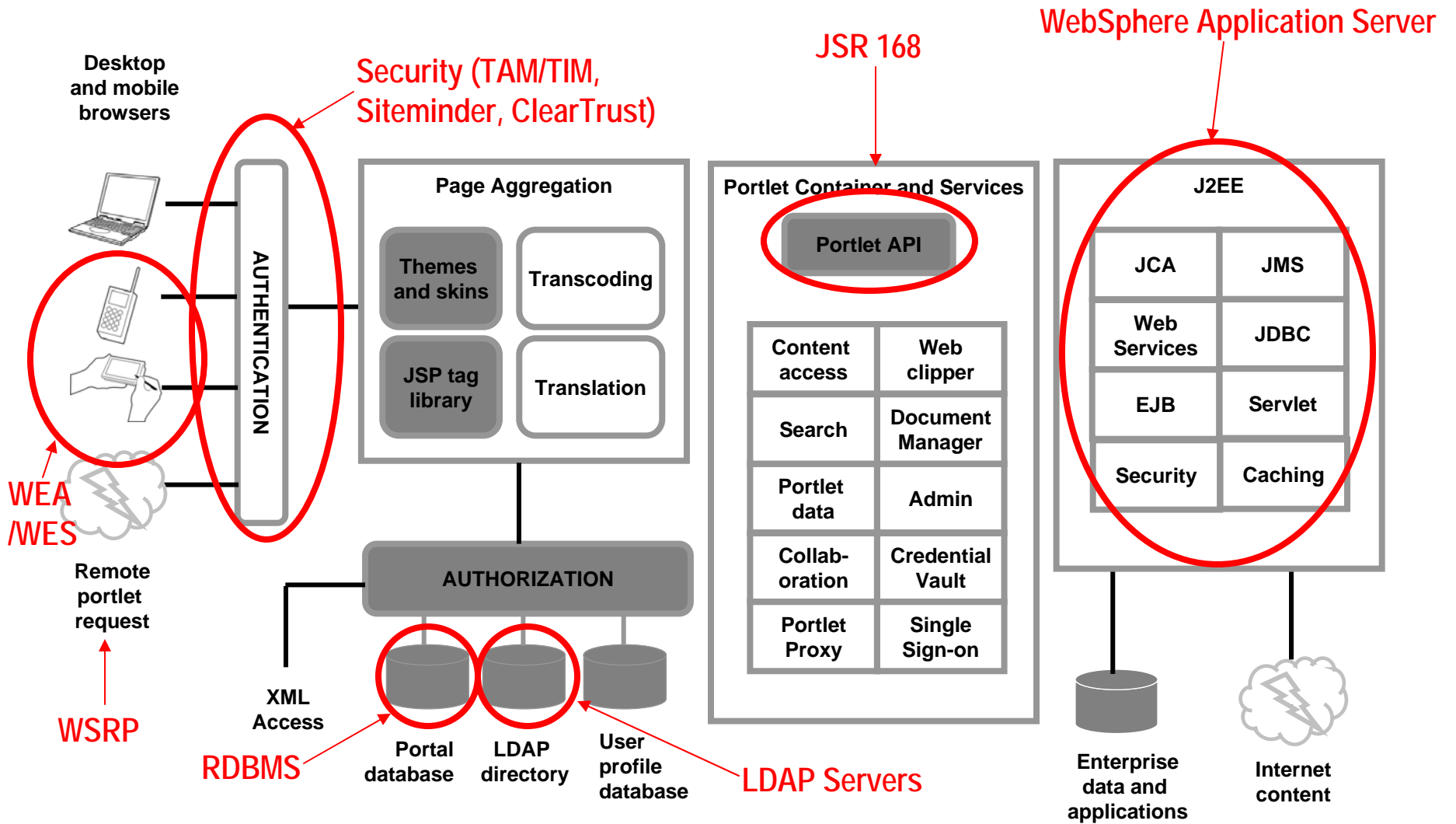
Introducing WebSphere Portal Express Version 6.0



- Collaborative portal bundle
 - Ready to use Intranet and Extranet examples
 - Web content management for content publishing
 - Document management
 - Lotus Sametime presence awareness and instant messaging
- All in a single package!**
- Based on WebSphere Portal 6 technology *
 - (Based on Portal 6.0.0.1)
 - Gartner Magic Quadrant leader
 - Developer Platform with tools in the box:
 - Lotus Component Designer *
 - Portlet Factory runtime (still need to purchase Portlet Factory Designer separately)
 - Latest APIs
 - DB2 Express in the box
 - Can be easily upgraded to Enterprise Portal products
 - All on a single live server with flexible purchasing options :
 - either per user or per processor
 - 1000 named user if per user licensing
 - Up to 4 CPUs (or equivalent Value Unit) if Processor Value unit is purchased.

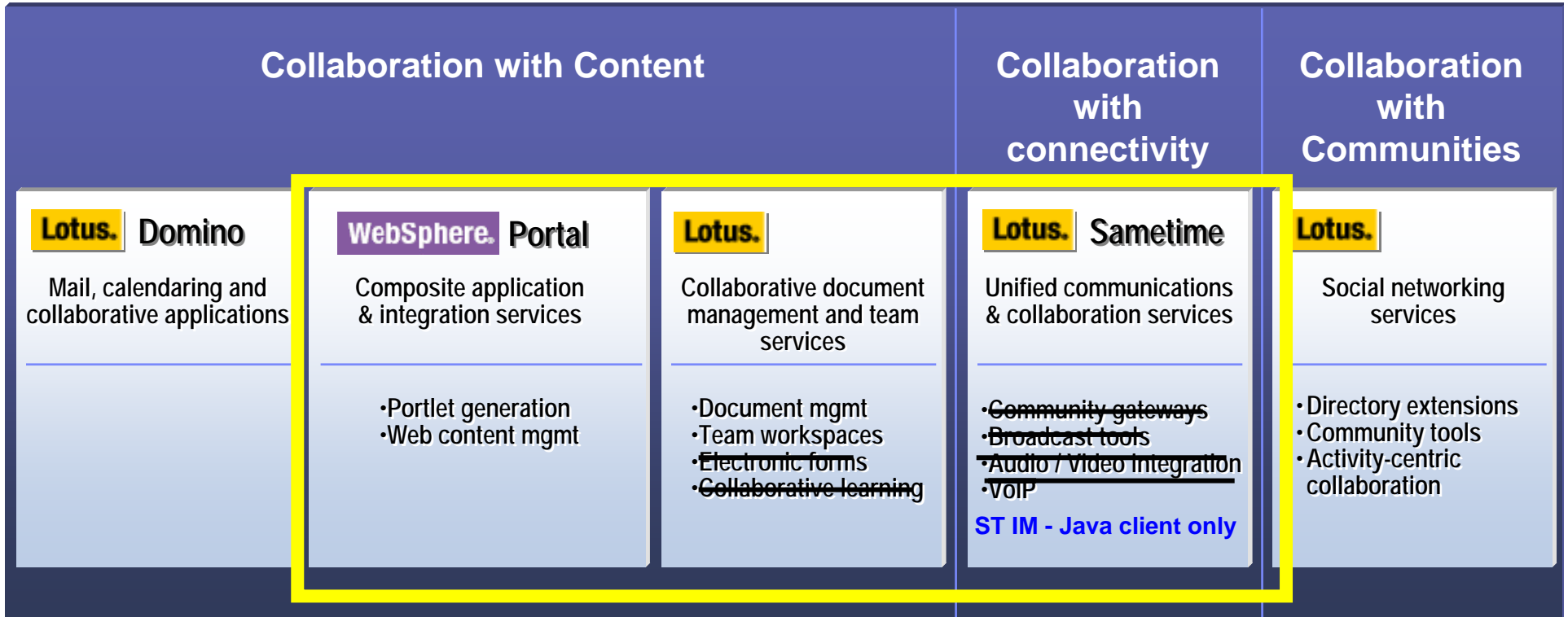
* Express Product Restrictions Apply

WebSphere Portal Architecture



Lotus Strategy

WebSphere Portal Express Version 6.0



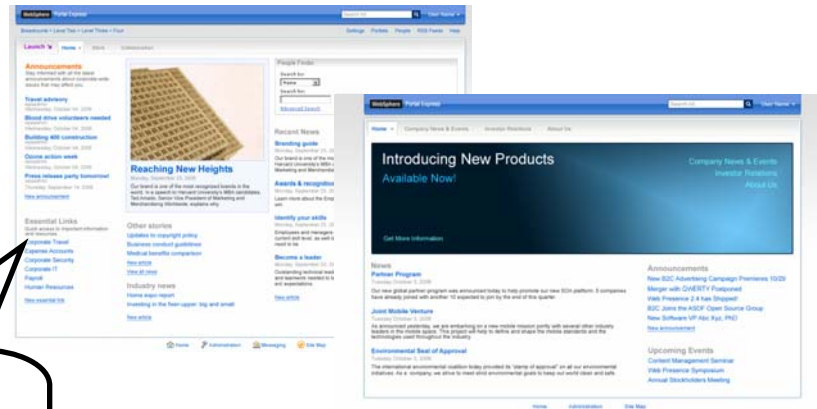
“WebSphere Portal Express Version 6.0”

Out of the box sites and components

Easy to install and configure

Includes portal, web content management, document management, presence awareness capabilities

What's in the box!



Ready to use Intranet and Internet sites

web content management for content publishing



WebSphere Portal



Can be easily upgraded to Enterprise Portal Products

Lotus Sametime *

Ready for
IBM DB2.
data server software



Developer Platform with tools in the box:
Lotus Component Designer *
Latest APIs

DB2 *

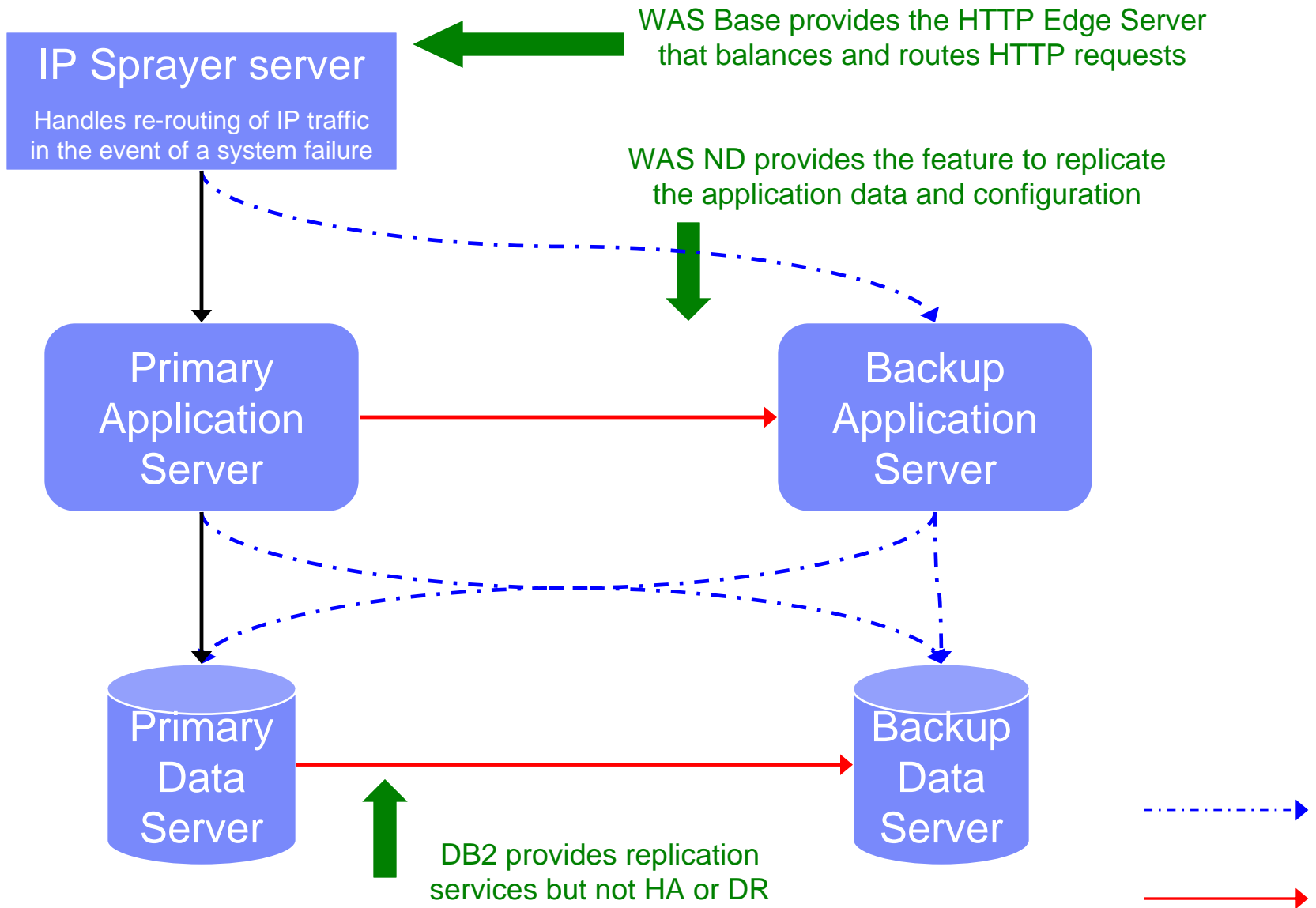
* Express Product Restrictions Apply

Requirement for High Availability for Fault Tolerance

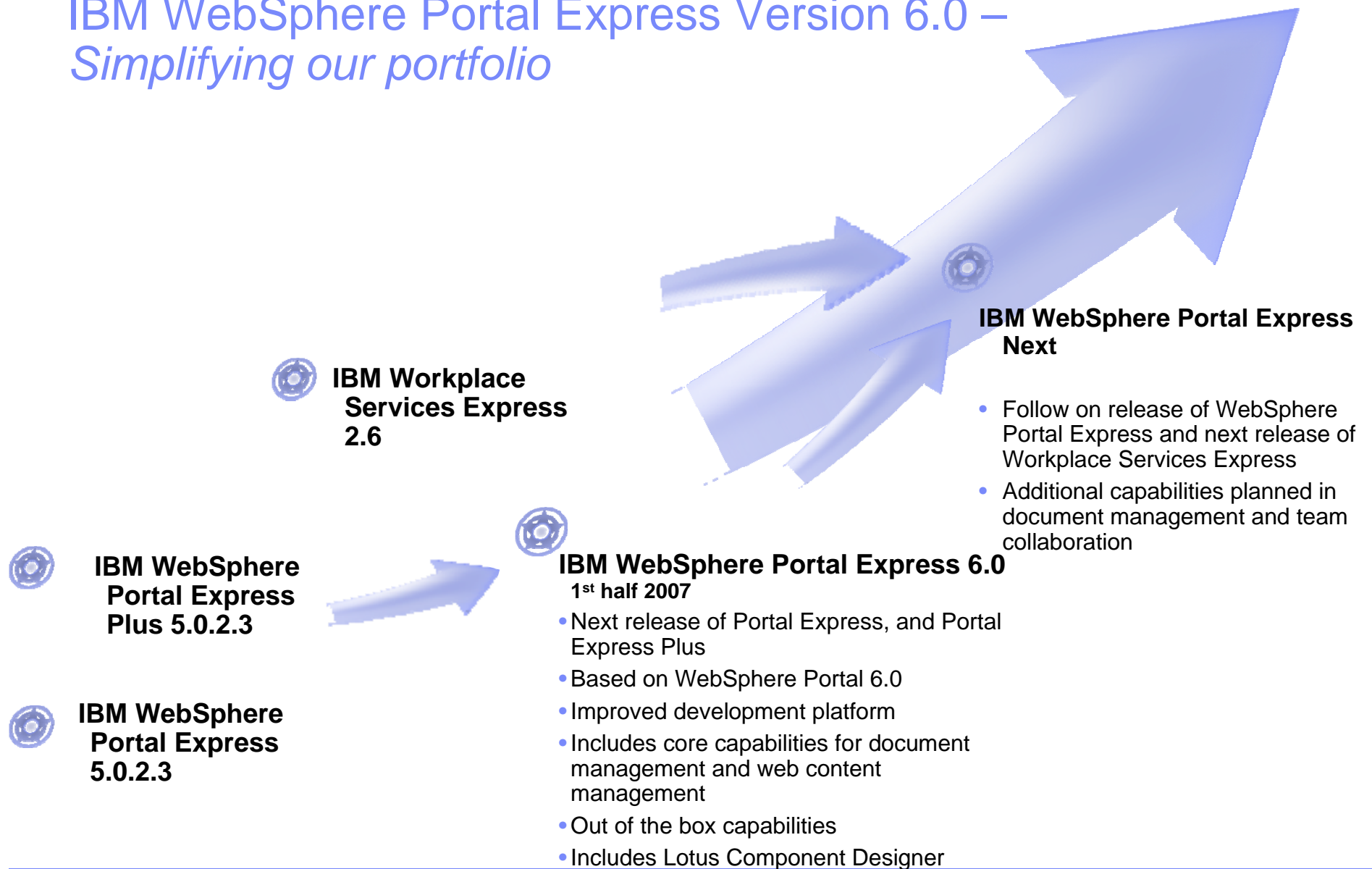
- **The need:** Customer and Partners have requested that even though they may be Express customers they need high availability as Portal become a focal point for their businesses.
- **The solution:** Provide a High Availability for fault tolerance solution for WebSphere Portal Express Version 6.0.
 - Customers can deploy a 2 node cluster to provide fault tolerance. Only one server can be active. If that server fails the other server takes over.
 - This solution cannot be deployed for clustering for performance.
 - If more scalable performance is required a customer can purchase the Enterprise products : WebSphere Portal Enable or WebSphere Portal Extend



Hot Fail-Over Scenario



IBM WebSphere Portal Express Version 6.0 – *Simplifying our portfolio*



High Level Benefits for End Users



Information at your fingertips: Personalized home page with information and applications in a unified consistent easy to use user interface

Collaborate with colleagues via Collaborative Intranet and Extranet sites

Access to important information and applications to make better business decisions

Share Documents and applications

What's New in Portal Express Version 6.0:

Ready to use personalized sites make it easy to find information and apps

Improved Document Management

Faster access to information – due to better performance

Improved search making it easier to find new content as well as ability of 3rd party search engines to more easily crawl content within Portal Express Version 6.0

Access to additional capabilities supported by IBM companion products like Workplace Forms which are supported on Portal Express Version 6.0 (additional costs apply)

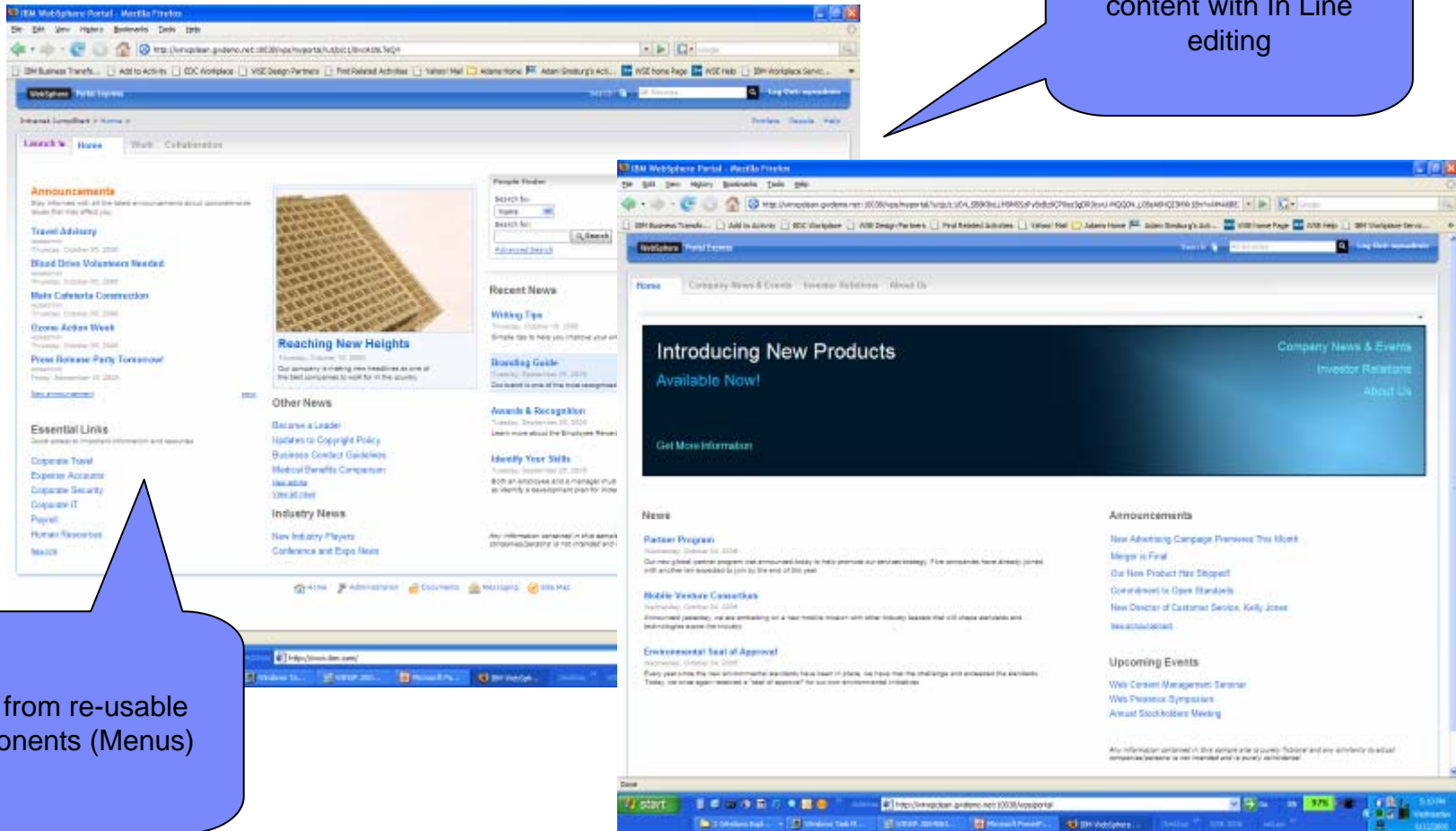
Easier access to Mail and Calendaring with latest portlets for Domino, Exchange and POP3/IMAP

Improved IM capability and Scalability with Sametime 7.5

*Express licensing restrictions apply

Get Started quickly: Out of the box Intranet and Internet sites

Easily edit sample content with In Line editing

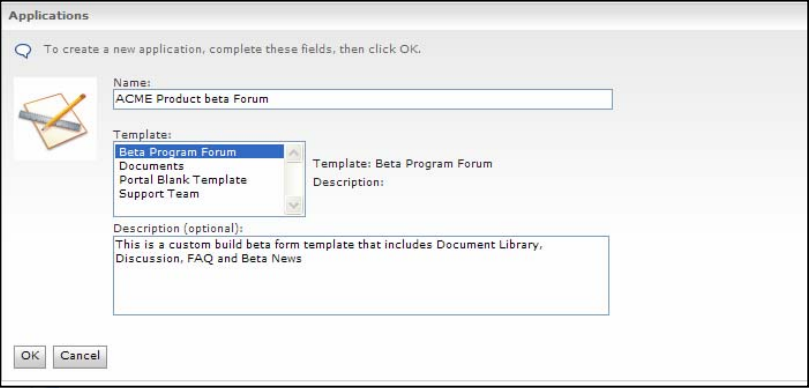
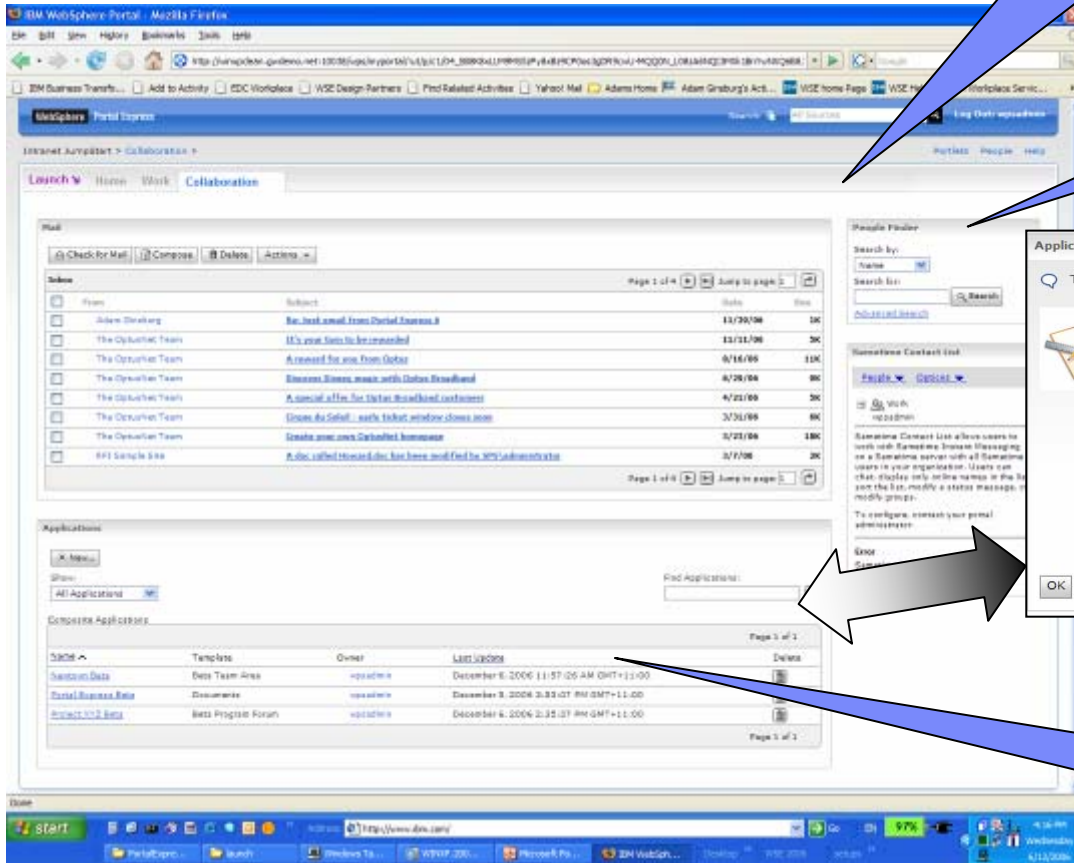


Build from re-usable components (Menus)

Collaboration and Integration

Access to new Mail portlets.
Based on CPP portlets from Portal 6

Access to Sametime (IM) portlets
and Sametime 7.0 Java Client.
Update to ST client due out later in
2007



Composite Apps:
Non-technical folk can
self provision new
composite applications
from pre-defined
templates

Content Creation and Customization easy for Non-Technical users

The screenshot displays the Lotus Component Designer interface. On the left, a 'Portlets' sidebar lists various widgets like Banner Ad, Bookmarks, Currency Calculator, My To Do, Newsgroups, QuickLinks, Reminder, Search Sitemap, and World Clock. The main area shows a list of content items with columns for 'Created', 'Subject', 'Author', 'Status', 'Last Post', and 'Views'. Below the list are sections for 'FAQs' and 'News'. On the right, a form titled 'Identification' is visible, with fields for 'Name' (containing 'New Lotus Component Designer Build Ready'), 'Display title' (containing 'New Lotus Component Designer Build Ready'), 'Type' (set to 'Content'), and 'Library' (set to 'Express Web Content').

Lotus Component Designer to build add on components – eg. Discussion Sample out of the box!

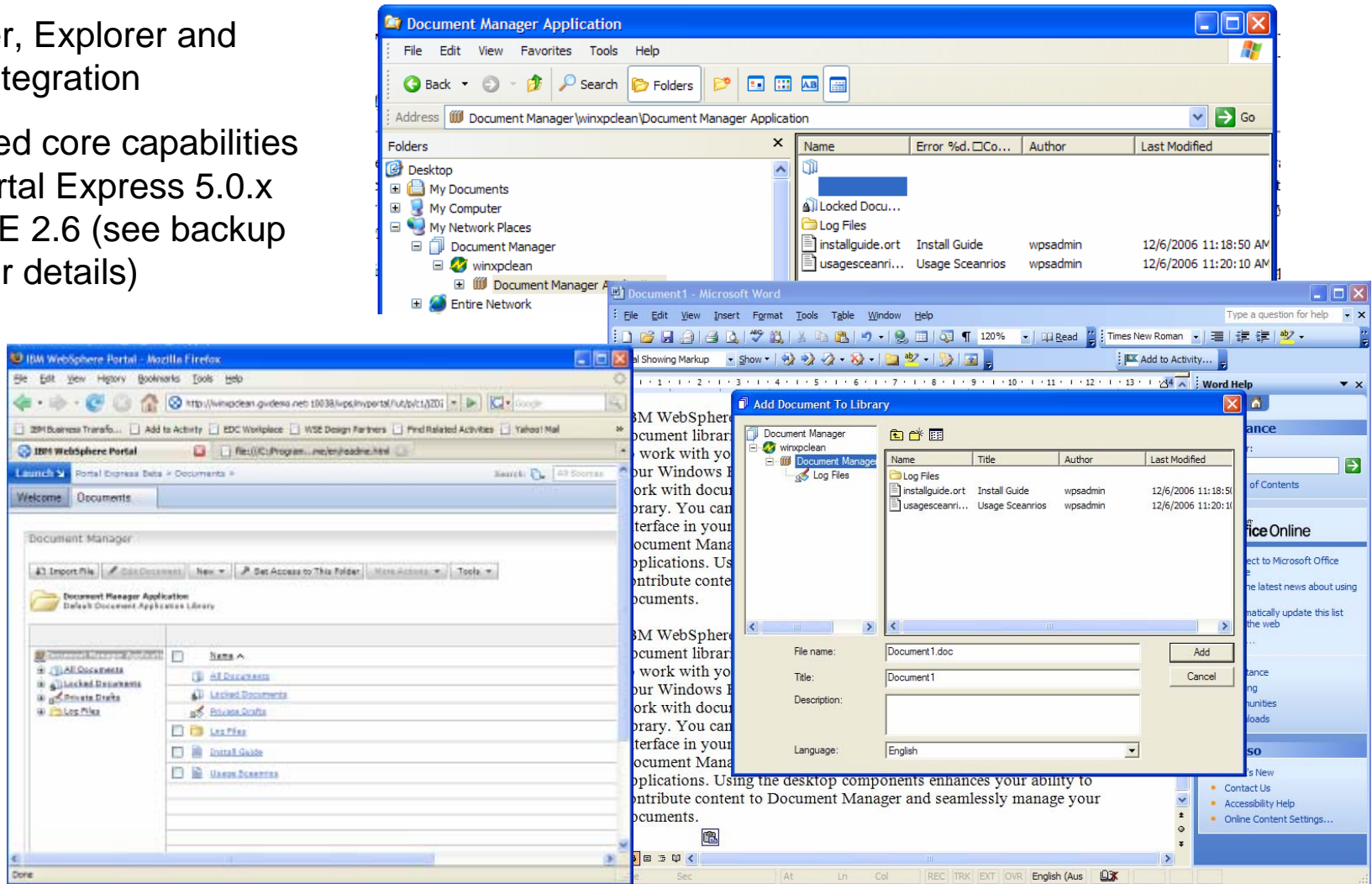
Out of the box enhanced lists based on WCM:

- Inline Editing
- Workflow and Versioning
- Email alerts on workflow
- Can modify look and feel

Drag and Drop Pre-defined portlets. This example is pre-defined WCM FAQ Portlet

Document Management Improvements

- Browser, Explorer and Office integration
- Improved core capabilities from Portal Express 5.0.x and WSE 2.6 (see backup slides for details)



High Level Benefits for Developers



Can deliver applications and information via a consistent user interface

Faster way to develop applications via Composite Application model

Can leverage out of the box building blocks like Document Libraries and Instant Messaging

Leverage open standards development tools and protocols

What's New in Portal Express Version 6.0:

API for content repository so that it can be extended

Provides a starting point for customers to leverage a services oriented architecture (SOA)

Out of the box sites that improve the development time to build a system

Enhanced inline authoring capabilities with ready to use lists, which support customizable workflow and versioning.

Email Alerts when content moves along with authoring workflow for lists

Develop applications with Lists that can have customized workflow, meta data and alerts

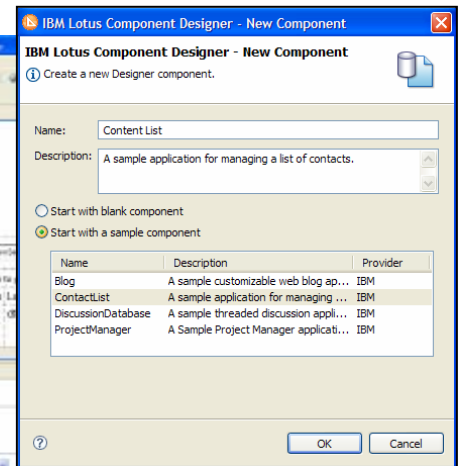
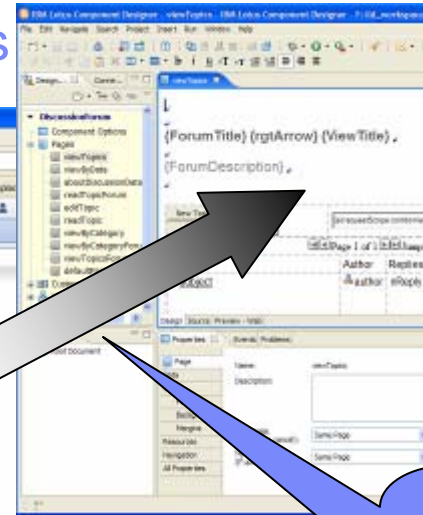
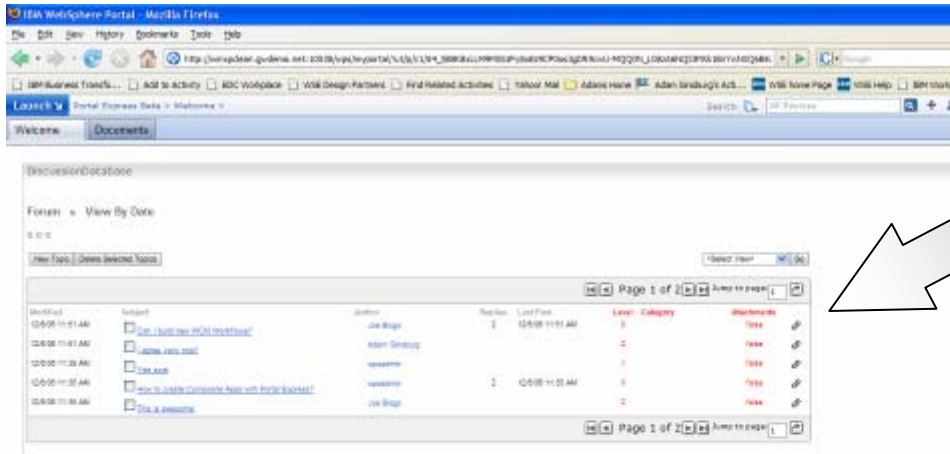
Leverage other IBM Applications like Workplace Forms as they are now supported on Portal Express Version 6.0

Latest JVM leveraging the latest technology as well as compatibility with other development tools and APIs that rely on this JVM

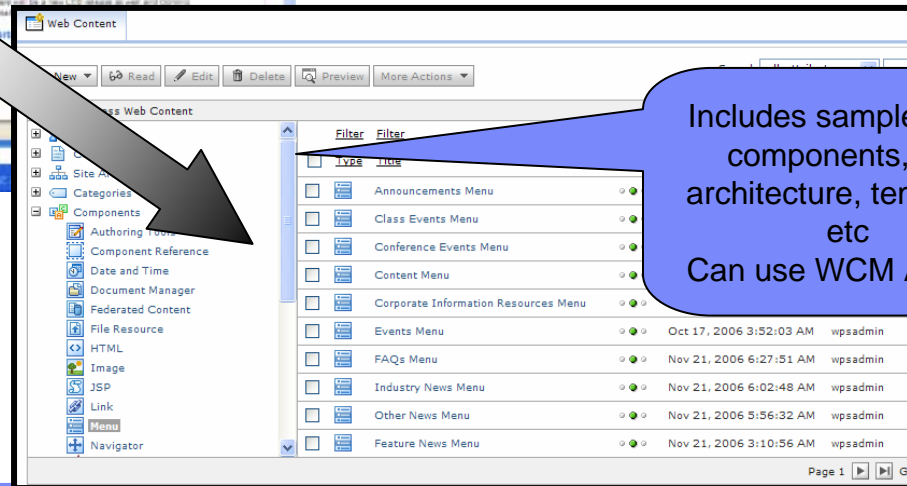
Improved scalability and performance for delivery of robust applications

New APIs including JSR168 extension, JSR188, ST 7.5 and other improvements making it easier to develop more functional applications.

Great Development Tools and Samples



Develop portlets and composite applications with Lotus Component Designer (and Portlet Factory – requires purchase of designer)



Includes sample WCM components, site architecture, templates etc
Can use WCM API too

Use WCM to develop and customize List portlets

High Level Benefits for Administrators



Easy to deploy and administer with existing infrastructure

Easy to delegate responsibility to end-users, reducing the load on Admin

Easy to roll-out applications and train users with consistent platform and interface

Not locked into an operating system (eg Windows) and set of associated products (eg Office) – works with what you have.

Provide a robust scalable architecture for supporting users

What's New in Portal Express Version 6.0:

High availability of Portal Express Version 6.0 in Warm Failover

Out of the box capabilities so it's faster to get a system up and running

Improved scalability and performance

More flexible delegation of responsibility with support of virtual portals

Better support of applications with Portal Express Version 6.0 supporting JVM 1.4.2 and IBM companion products like Workplace Forms.

Easy to control access to pages and content with new Dynamic Admin rules (attribute based) and new Policy features

Better integration and support of Exchange and Domino with new portlets.

Improved Admin performance

Operations and Deployment Improvements – Development/Staging to Production

*Express licensing restrictions apply

High Level Benefits for the Entire Organization



Benefit	How WebSphere Portal Express Version 6.0 adds to this
Ability to provide employees and customers with timely information and access to applications	WebSphere Portal Express Version 6.0 provides improved portal, collaboration and content management capabilities making it easier to get the right information to the right user
Better productivity from employees	<ul style="list-style-type: none"> ▪ Out of the box sites and components to get started quickly ▪ Easier for end-users to: <ul style="list-style-type: none"> – find people, info and applications – Create and manage content. ▪ Easier for end-users to work online in virtual teams
Cheaper faster business solutions provided by developers	More out of the box capabilities, better APIs and development tools on the latest technology
Lower admin costs	Better admin capabilities with virtual portals and improved admin capabilities making it easier to administer
A solution based on industry standards that can grow as the companies needs grow without high maintenance, migration and re-training around business solutions.	Support of latest standards, operating systems and development tools

*Express licensing restrictions apply