

Getting started with the IBM System Planning Tool (SPT)

Use this document to help you install and get started using the IBM System Planning Tool (SPT).

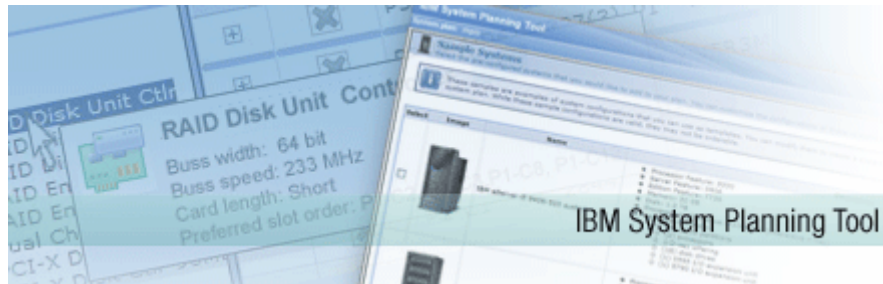


Table of Contents

Getting started with the IBM System Planning Tool (SPT)	1
About the SPT	3
Before you install	3
Installing the SPT	3
Using the SPT	9
Usage notes.....	9
Browsers and browser support.....	9
Pop-up blockers and firewalls	9
JavaScript	10
Integration with Workload Estimator and IBM Performance Management	11
Working with HMC or IVM system plans.....	12
Starting the SPT	12
Checking the version of the SPT.....	12
Starting the SPT in a new or existing browser session.....	12
Creating and deploying a system plan	14
Ending the SPT.....	14
Saving your output.....	15
Using Internet Explorer	15
Using Firefox.....	15
Updating the SPT	16

About the SPT

The IBM System Planning Tool helps you design a system or systems to be partitioned with logical partitions. You can also plan for and design non-partitioned systems using the SPT. The resulting output of your design is called a system plan, which is stored in a .sysplan file. This file can contain plans for a single system or multiple systems. The .sysplan file can be used:

- To create reports
- As input to the IBM Configurator for e-Business (e-config)
- To create and deploy partitions on your system(s) automatically

The SPT is the next generation of the IBM LPAR Validation Tool (LVT). It contains all of the function from the LVT, as well as significant functional enhancements, and is integrated with the IBM Systems Workload Estimator (WLE). System plans generated by the SPT can be deployed on the system by the Hardware Management Console (HMC) or the Integrated Virtualization Manager (IVM).

Note: In previous releases of the SPT, you could view an HMC or IVM system plan, but you could not edit the plan. The SPT now allows you to convert an HMC or IVM system plan into a format that will allow you to edit the plan in the SPT, as well as import partitions from an HMC or IVM system plan into an SPT system plan.

The SPT is a PC-based browser application designed to be run in a standalone environment. The SPT can be used to plan solutions for the following IBM systems:

- IBM System p (based on POWER5 processor)
- IBM System p (based on POWER6 processor)
- System i5
- eServer p5
- eServer i5
- OpenPower
- iSeries 8xx and 270 models

The SPT and its supporting documentation can be found on the IBM System Planning Tool site at:

<http://www-304.ibm.com/jct01004c/systems/support/tools/systemplanningtool/>

Before you install

Before you install the SPT on your PC, consider the following:

- Because the SPT is a web-based application, the SPT uses a TCP/IP port to display pages on your browser window. When you install the SPT, the SPT installation wizard asks you to specify the TCP/IP port that you want the SPT to use. By default, the SPT installation wizard displays the first available TCP/IP port starting after port 6001 on your PC. If the TCP/IP port used by SPT conflicts with the TCP/IP port that is used by another application on your PC, you might need to change the TCP/IP port that the SPT uses so that the applications do not conflict with each other.

Important: If you find you're having trouble starting the SPT intermittently, it may be because the port number is causing problems. By selecting a port in a higher range, you maybe less likely to experience port conflicts. The TCP/IP port number can be changed after installation in the System Planning Tool settings. To access the SPT settings, click **Start > Programs > IBM System Planning Tool > Settings**.

If you are still having troubles starting the SPT, see the **Troubleshooting Guide** (available from the SPT Website) for more details.

Installing the SPT

To install the SPT on your PC, complete the following:

1. Download the SPT installation wizard from the SPT website to a location on your PC.

Note: The directory that you download and start the installation from cannot contain the following characters: # or @. For example, "C:\TempWork#1\SPT" contains characters that may cause the installation of the SPT to fail.

2. Run the installation .exe file from your PC. The Welcome step displays.



3. Click **Next**. The License Agreement step displays.

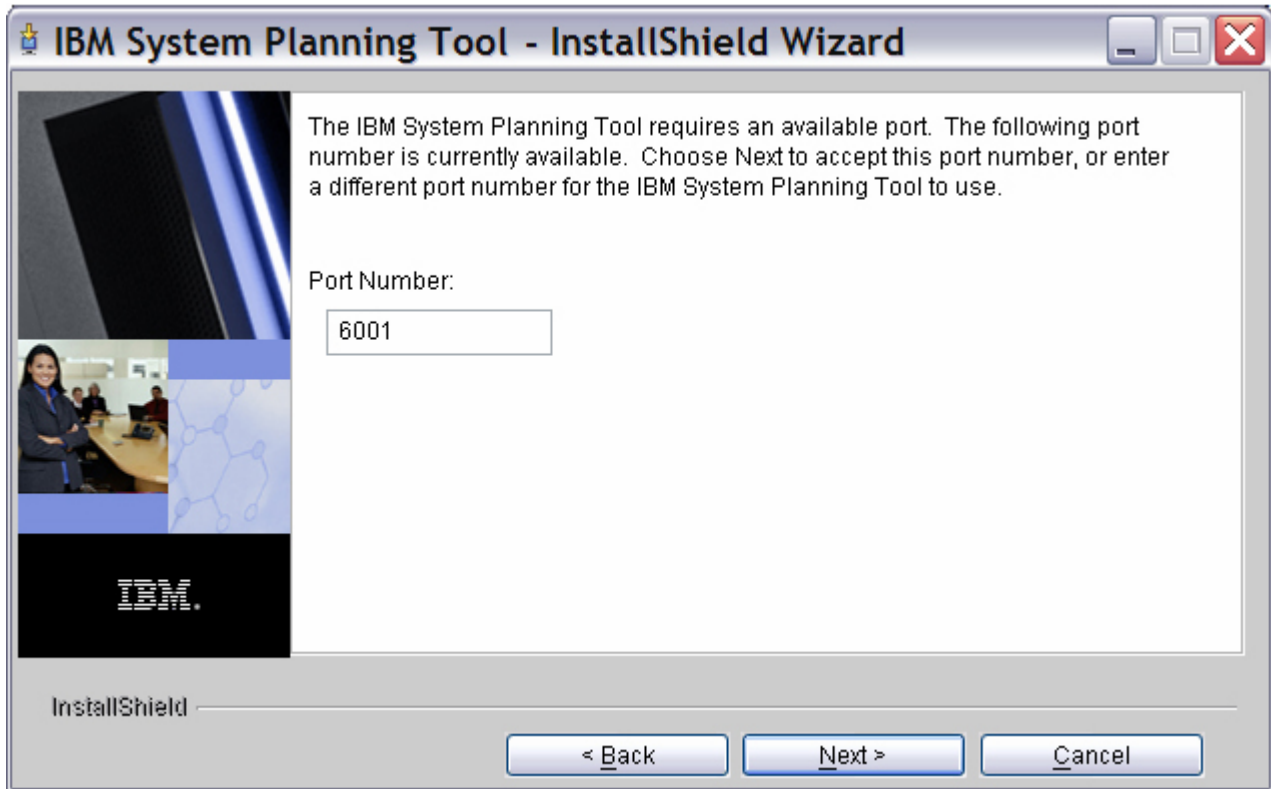


4. Select the language in which you want to read the license agreement and review the terms within the license agreement. If you agree to the terms of the license agreement, choose **I accept the terms of the license agreement** and click **Next**. The Install Directory step displays.

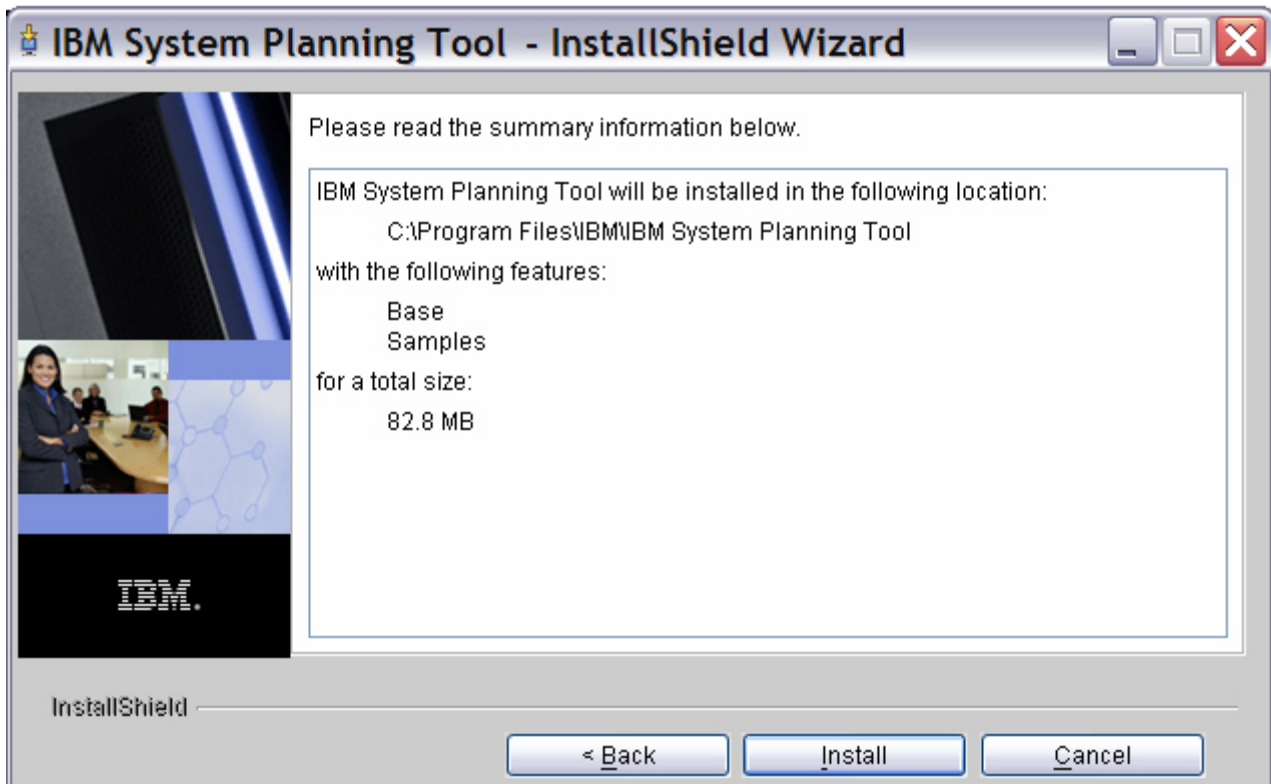


5. Review the default installation directory and change the installation directory if desired. You can change the installation directory by entering the desired directory into the **Directory Name** box. Alternately, you can click the **Browse** button and use the **Browse** window to create a new directory or select an

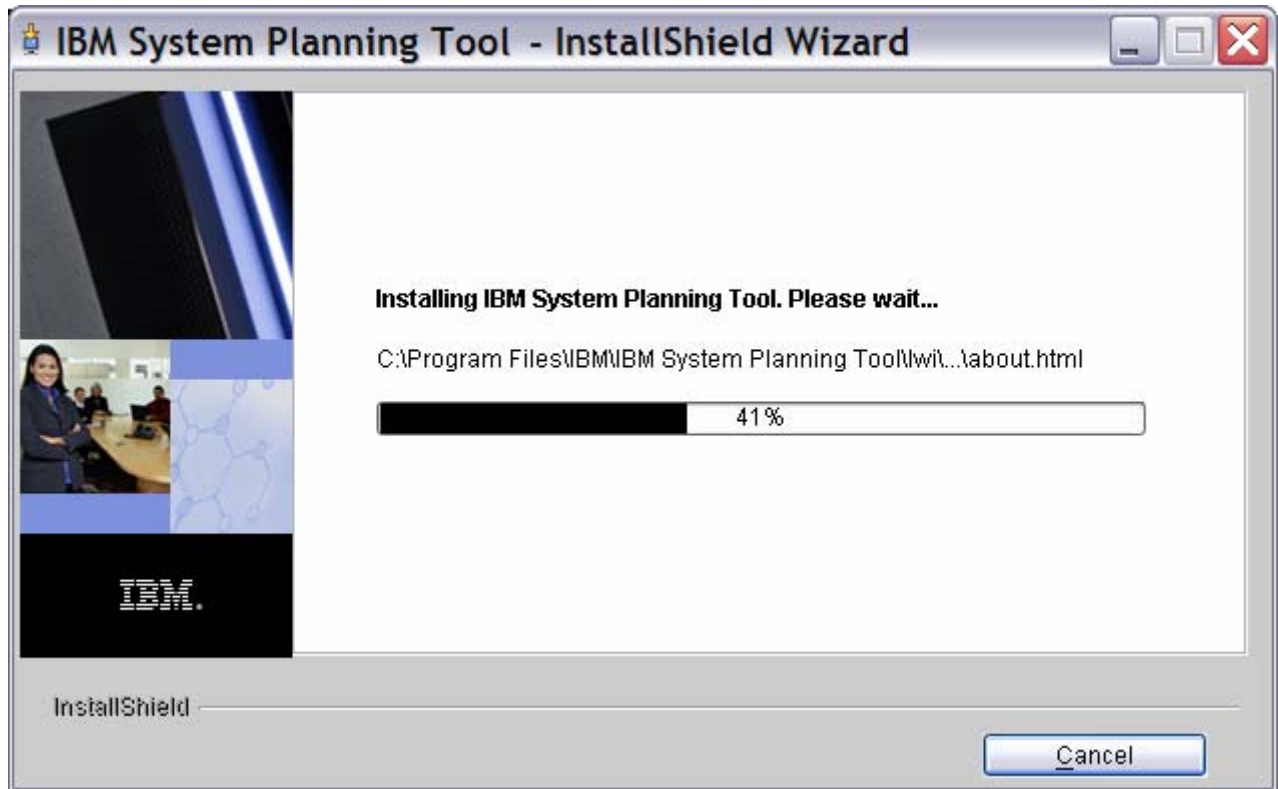
existing directory. When you have selected the directory that you want to use, click **Next**. The SPT Port step displays.



6. Review the default TCP/IP port that is to be used by the SPT. By default, the SPT installation wizard enters the first unused port number after port 6001 available on your PC. You can change the TCP/IP port by entering a different TCP/IP port number into the **Port Number** box. When you have selected the TCP/IP port number that you want to use, click **Next**. The Summary Information step displays.



7. Review the settings that you have selected for the SPT. When you are ready to install the SPT, click **Install**. The SPT installation wizard copies the SPT program files to the directory that you specified.



- When the SPT installation wizard is complete, the Finish step displays. If you do not want to run the SPT after you click **Finish**, clear the **Start the IBM System Planning Tool when the installation wizard exits** option and click **Finish**. Otherwise, click **Finish** to run the SPT.

Note: De-select **Start the IBM System Planning Tool when the installation wizard exits** if you are installing a patch release of the SPT. First load the full install, next load the patch install, and then start the SPT.



Usage notes

Browsers and browser support

- Because the SPT is a browser-based application, it will launch in the browser that is defined as your default web browser on your PC. If the SPT does not open when you attempt to launch it, it could be because you do not have a default web browser defined. Check your PC's default browser settings.

To launch the SPT manually, enter the following URL into your browser, replacing [port] with the port number you specified during the installation of the SPT:

[http://localhost:\[port\]/spt](http://localhost:[port]/spt)

Note: the port number is also available in the SPT settings. To access the SPT settings, click **Start > Programs > IBM System Planning Tool > Settings**.

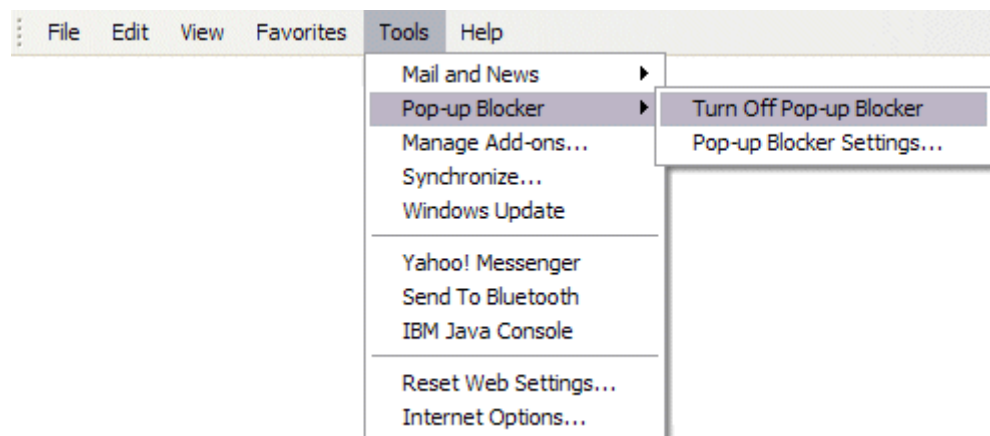
- The SPT is supported on the following browsers:
 - Microsoft Internet Explorer
 - Mozilla Firefox

Pop-up blockers and firewalls

- The SPT uses pop-up windows for many functions. If you use a pop-up blocker, such as Google Toolbar, you may need to set the pop-up blocker to allow localhost to open pop-up windows.
- The supported Internet Explorer and Firefox browsers also contain pop-up blocking features. You may need to change your browser settings to allow pop-up windows.

Enabling pop-up windows in Internet Explorer

On the **Tools** menu, point to **Pop-up Blocker**, and then click **Turn Off Pop-up Blocker**.



Note: You can also leave the pop-up blocker on and customize the pop-up blocker to allow localhost to open pop-up windows.

Enabling pop-up windows in Firefox

The Pop-up Blocker Options are located in the Content panel of **Tools > Options**.

- If you have a software firewall application installed on your PC (such as Check Point Integrity Client or Zone Labs ZoneAlarm), you might need to tune the firewall settings to allow SPT.exe to access the local network when you first run the SPT.

Note: When you install an SPT fix pack, a new version of the SPT is loaded onto your system. If you're

using a software firewall, then you may need to update the firewall software to recognize the new version of SPT.exe. If the SPT fails to start properly after loading a fix pack, this is most likely the problem.

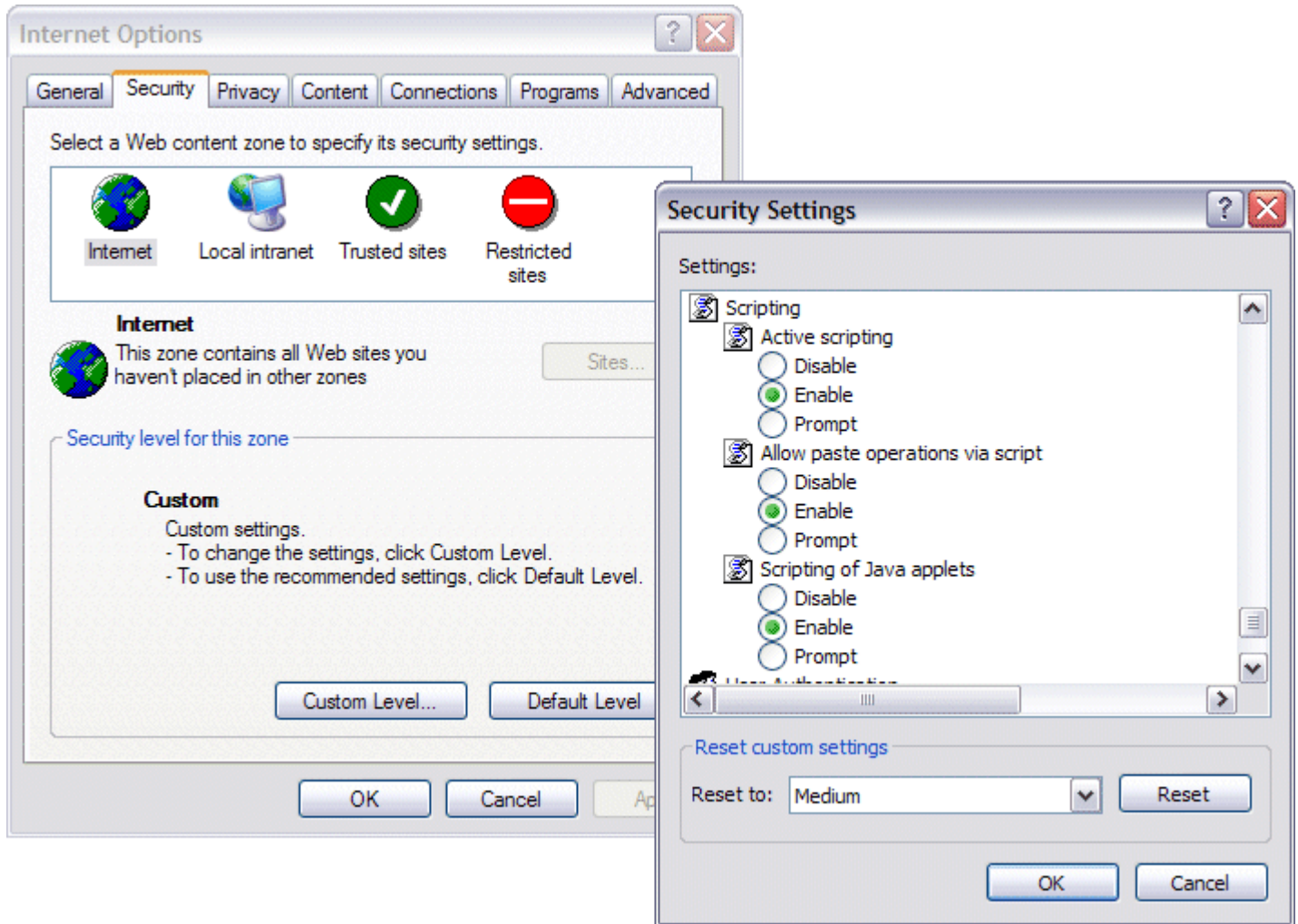
JavaScript

The SPT requires JavaScript to be enabled in your browser.

Enabling JavaScript in Internet Explorer

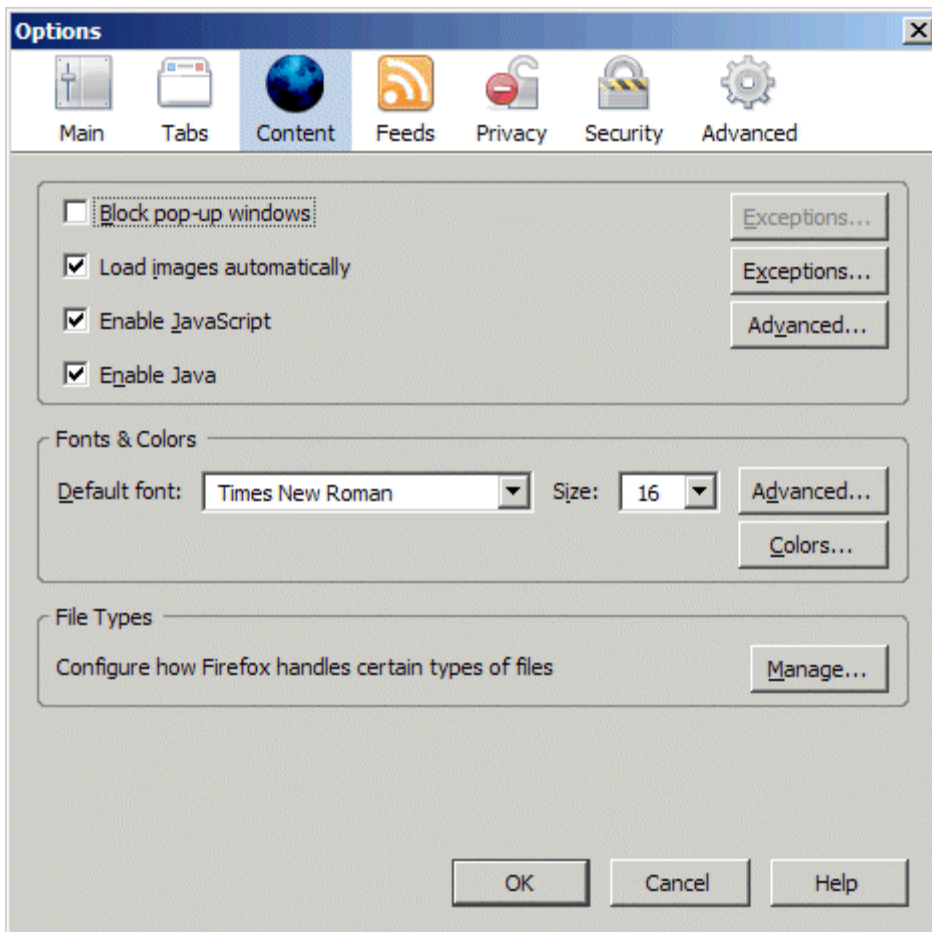
Click **Tools > Internet Options**, then click the **Security** tab.

Ensure that either the security setting is at a low setting, or provide a Custom setting such that the **Active scripting** option is set to **Enable**.



Enabling JavaScript in Firefox

Click **Tools** > **Options**, then select the **Content** tab. Ensure that the **Enable JavaScript** option is selected.



Integration with Workload Estimator and IBM Performance Management

- Integration between the SPT and the Workload Estimator (WLE) allows you to create a system that is based upon performance data from an existing system or that is based on new workloads that you specify. If you want to create systems using the integration between the SPT and the WLE, either you must have the WLE installed locally on your PC or you must be able to access the online version of WLE through the Internet. For more information on how to use the online version of the WLE or download a copy of the WLE, see the WLE website:
<http://www-304.ibm.com/jct01004c/systems/support/tools/estimator/index.html>
- If you want to create a system that is based upon performance data from an existing system, you must collect this performance data for at least a week before using the SPT to create the new system. This data is collected by IBM Performance Management (PM). For examples of how to activate and use PM on your server and of how PM and WLE work together, see the *Performance Management for IBM eServer iSeries and pSeries: A Systems Management Guide* Redbook:
<http://www.redbooks.ibm.com/abstracts/sg247122.html>
- Many WLE tutorials are available as Portable Document Format (.pdf) files, and the WLE allows you to print the final recommended system as a .pdf file. If you want to use these features, you must have a program that can display and print .pdf files installed on your PC (such as Adobe Reader). To download and install the latest version of Adobe Reader, please go to the Adobe website:
<http://adobe.com/products/acrobat/readstep.html>.

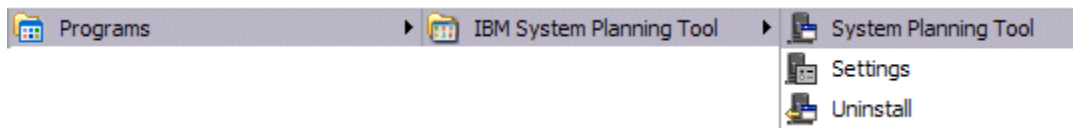
Working with HMC or IVM system plans

In previous releases of the SPT, you could view a Hardware Management Console (HMC) or Integrated Virtualization Manager (IVM) system plan, but you could not edit the plan. You can still view your plan at any time, but the SPT now allows you to convert an HMC or IVM system plan into a format that will allow you to edit the plan in the SPT. When you open an existing HMC or IVM system plan and click Convert, you will launch the System Plan Conversion Wizard.

For more information on optimizing your system plan and to obtain the best possible conversion results refer to the conversion guide available from the SPT Website: **Converting system plans to System Planning Tool (SPT) format.**

Starting the SPT

To start the SPT, click **Start -> Programs -> IBM System Planning Tool -> System Planning Tool.**



Note: When the SPT is running, the System Planning Tool icon is present in the Windows taskbar tray in the lower-right corner of your desktop.

Checking the version of the SPT

The version of the SPT appears in the bottom corner of the launch page. Alternatively, once the SPT is started, right-click on the SPT icon in the Windows taskbar tray and click **About**. You will see a window similar to the one below:

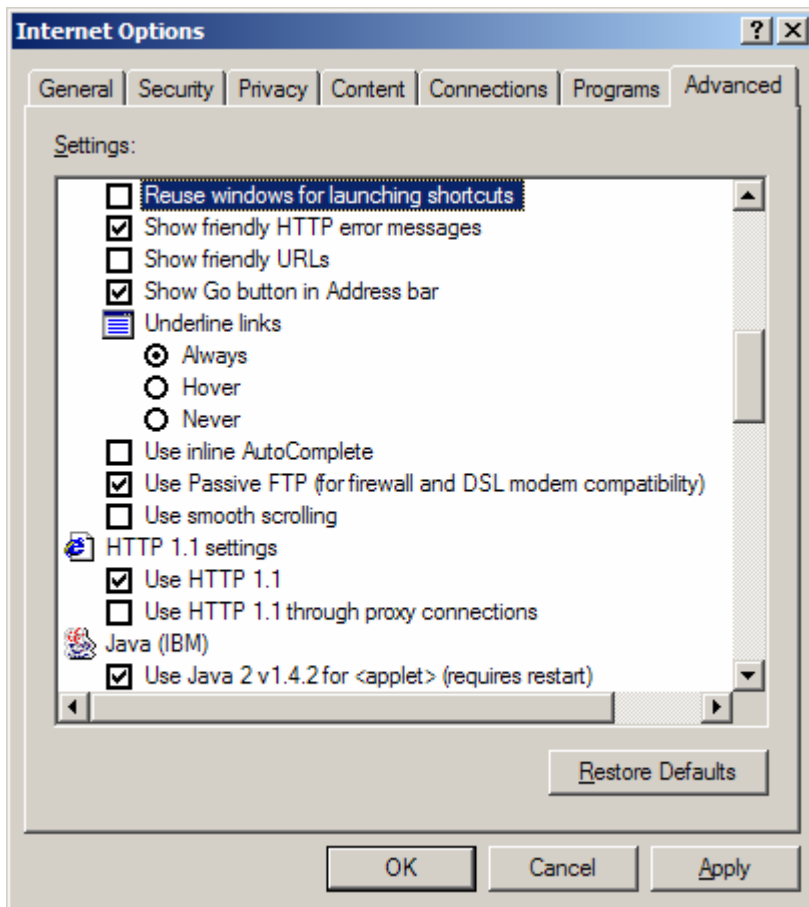


Starting the SPT in a new or existing browser session

When you start the SPT, your SPT session either starts in a new browser window or uses an existing browser session. If the SPT starts in an existing browser session, you will lose whatever you were doing in that window. To ensure that the SPT starts in a new browser window, you may need to change your browser's settings.

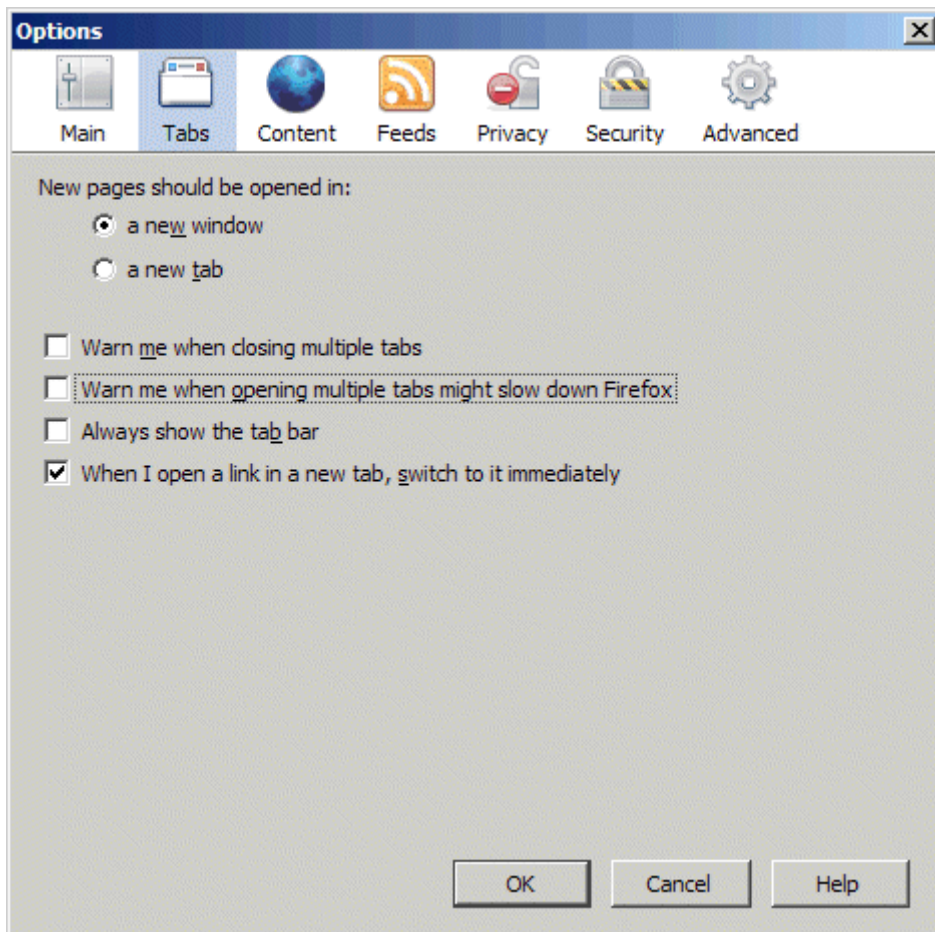
Starting the SPT in a new Internet Explorer window

In Internet Explorer, click **Tools > Internet Options** then click the **Advanced** tab. Ensure that the **Reuse windows for launching shortcuts** option is not selected, as shown here:



Starting the SPT in a new Firefox window

In Firefox, click **Tools > Options** then click the **Tabs** tab. Under **Open links from other applications in**, ensure that **a new window** is selected, as shown here:

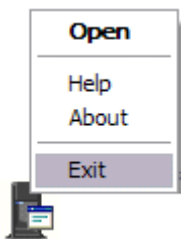


Creating and deploying a system plan

The SPT contains online help to assist you with using the tool and creating and deploying a system plan. Click on the help link when using the SPT for overview and procedural documentation.

Ending the SPT

Closing your SPT browser session does not shut down the SPT. It will remain running and the SPT icon will be present in the taskbar tray. To shut down the SPT, right-click on the SPT icon in the taskbar and click **Exit**.

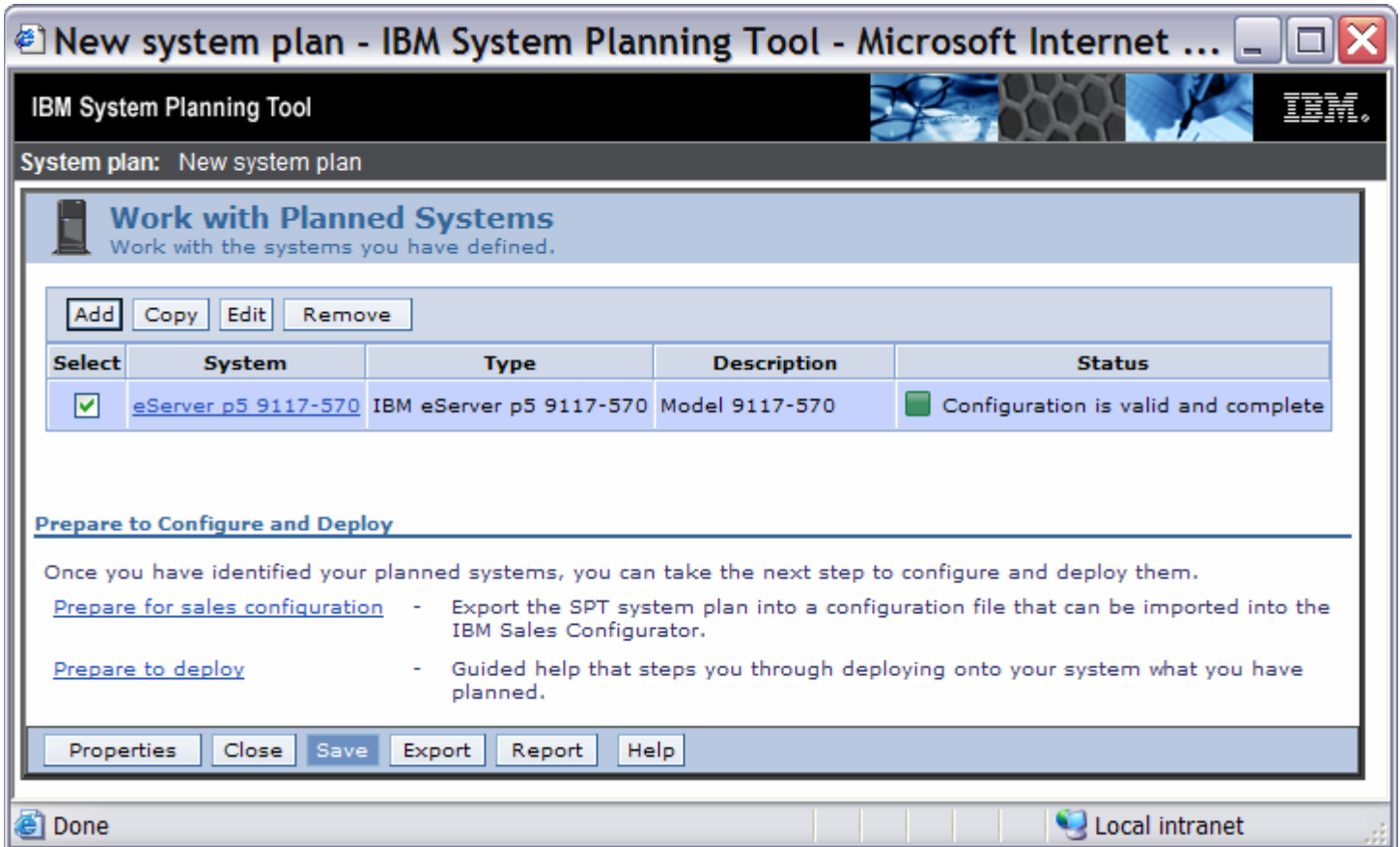


Note: Do NOT use the Windows Task Manager to end the SPT (SPT.exe). Ending the SPT this way can cause problems. If you do end the SPT using the Windows Task Manager, reboot your computer before uninstalling or installing the SPT.

Saving your output

Once you have completed your system plan, you can save your plan as a .sysplan output file. Save your system plan by clicking on the **Save** button in the lower-left corner of the SPT.

Note: If you are saving your system plan and you want to give the plan a meaningful name, click on the **Properties** button in the lower-left corner to change the system plan name before you save.



The screenshot shows the IBM System Planning Tool interface. At the top, the title bar reads "New system plan - IBM System Planning Tool - Microsoft Internet ...". Below the title bar, the text "IBM System Planning Tool" is displayed. The main content area is titled "Work with Planned Systems" and includes a sub-header "Work with the systems you have defined." Below this, there are buttons for "Add", "Copy", "Edit", and "Remove". A table lists the planned systems:

Select	System	Type	Description	Status
<input checked="" type="checkbox"/>	eServer p5 9117-570	IBM eServer p5 9117-570	Model 9117-570	<input checked="" type="checkbox"/> Configuration is valid and complete

Below the table, there is a section titled "Prepare to Configure and Deploy" with the following text: "Once you have identified your planned systems, you can take the next step to configure and deploy them." Two links are provided: "Prepare for sales configuration" (with a description: "Export the SPT system plan into a configuration file that can be imported into the IBM Sales Configurator.") and "Prepare to deploy" (with a description: "Guided help that steps you through deploying onto your system what you have planned."). At the bottom of the interface, there are buttons for "Properties", "Close", "Save", "Export", "Report", and "Help". The status bar at the very bottom shows "Done" and "Local intranet".

Important: It is recommended that you save your system plan often as you progress through the SPT. When editing your system plan you can also click **Apply** in the lower-left corner of the screen to apply your changes to the master copy of the system plan. Applying your changes ensure that if the browser session is lost, when you re-connect to your system plan, the changes you made will be kept.

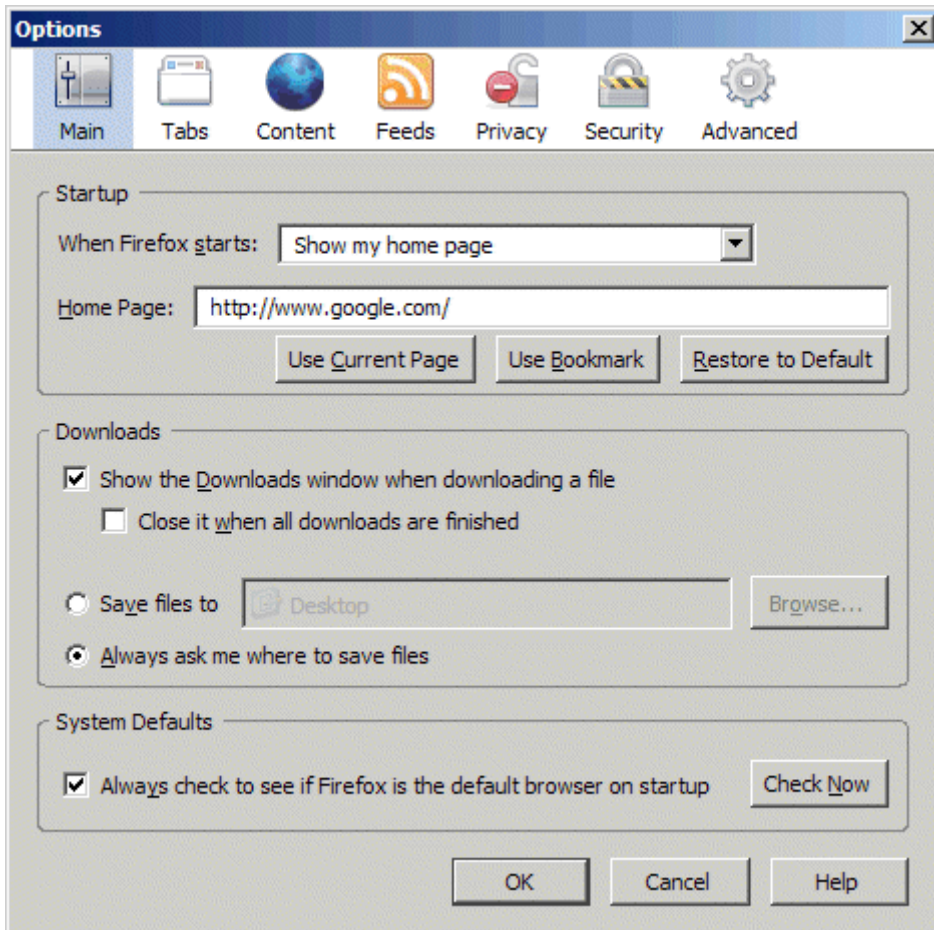
Using Internet Explorer

When saving your .sysplan from an Internet Explorer SPT session, you will be prompted to specify your desired download destination.

Using Firefox

When saving your .sysplan from a Firefox SPT session, you may not be prompted to specify your desired download destination, depending on your Firefox browser settings. Your .sysplan may be downloaded automatically to a pre-defined specified location. This is the default Firefox behavior.

To specify the destination of downloaded files in Firefox, click **Tools > Options**. You can select to have Firefox prompt you for the desired destination directory every time you download a file, or you can specify the default folder where all downloads will be saved



Updating the SPT

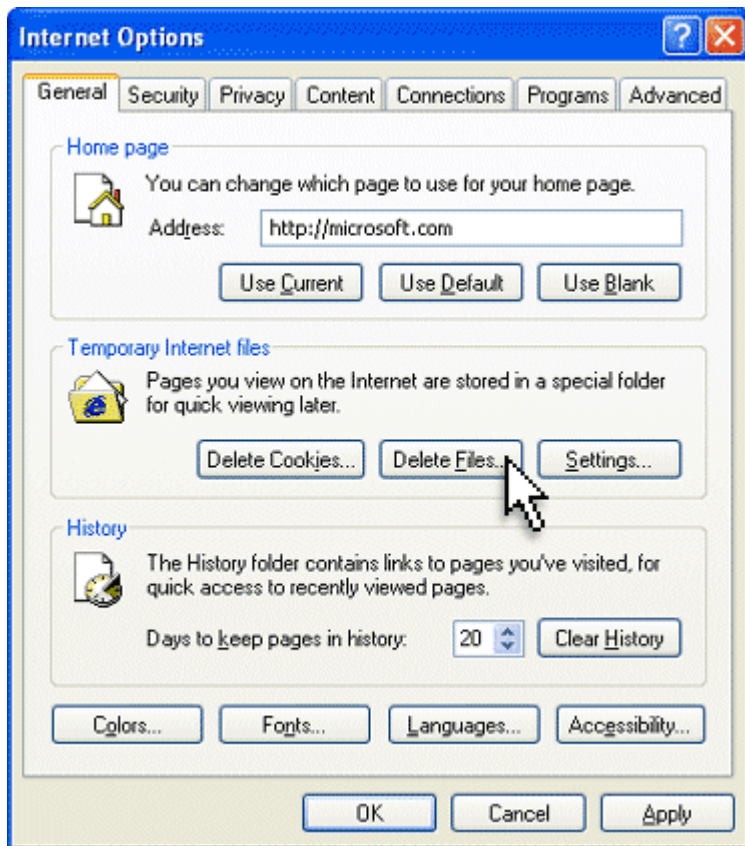
Updates to the SPT will be made as often as necessary, roughly every two to four weeks. These updates will be posted on the System Planning Tool web site:

<http://www-304.ibm.com/jct01004c/systems/support/tools/systemplanningtool/>

IMPORTANT: After you install an update, it is important that you clear your browser's cache to ensure that you are getting the latest revisions. If you experience irregular behavior even after you clear your browser's cache be sure to check your firewall and pop-up blocker settings.

To clear your browser's cache in Windows Explorer:

1. Select **Tools > Internet Options**.
2. On the **General** tab, in the **Temporary Internet Files** section, click the **Delete Files** button.
3. Click **OK**, then click **OK** again.



To clear your browser's cache in Firefox:

1. Select **Tools > Options**
2. Select the **Privacy** panel and click the **Cache** tab.
3. Click the **Clear Now** button at the bottom of the **Cache** tab.

