

Enterprise Modeling with IBM Software and Industry Models

Nick Norris
Solution Architect, Rational Software
njenorris@us.ibm.com



IBM Rational Software Development Conference 2008

WHERE TEAMS ARE **R-HEROES**



Objectives

- Introduce & position IBM Financial Services Sector models & Software Delivery Platform
- Introduce key Enterprise Modeling usage scenarios
- Introduce and review Enterprise Modeling, Tooling, and Run-time landscape
- Introduce and review Key Capabilities and Tooling Required to Support Enterprise Modeling scenarios and lifecycle

Agenda

- ➔ Introduce & position IBM Financial Services Sector models & Software Delivery Platform
 - Introduce and review
 - ▶ Key Enterprise Modeling Usage Scenarios
 - ▶ High-Level and Detailed Models & Associated Landscape
 - Key Capabilities and Tooling Required to Support
 - ▶ “Enterprise Model Driven Development” scenario
 - ▶ “Governance and Manage Enterprise Model Driven Development” scenario
 - ▶ “Govern and Manage Enterprise Model Assets” scenario

IBM Industry Models

- **Focused on Solving Key Challenges**

- ▶ Operational Insight, Risk and Compliance
- ▶ Core System Renewal
- ▶ Process Transformation
- ▶ Data Governance and Standardization
- ▶ Integration through SOA

- **Customer Value**

- ▶ Reduces analysis and design of functional requirements by more than 40%
- ▶ Accelerates stakeholder approval by 50%
- ▶ Supports on average 85% of data requirements
- ▶ Compresses time compared to custom-built projects



Banking

287+ Workflows
 1603+ Activities
 2487+ Business Services

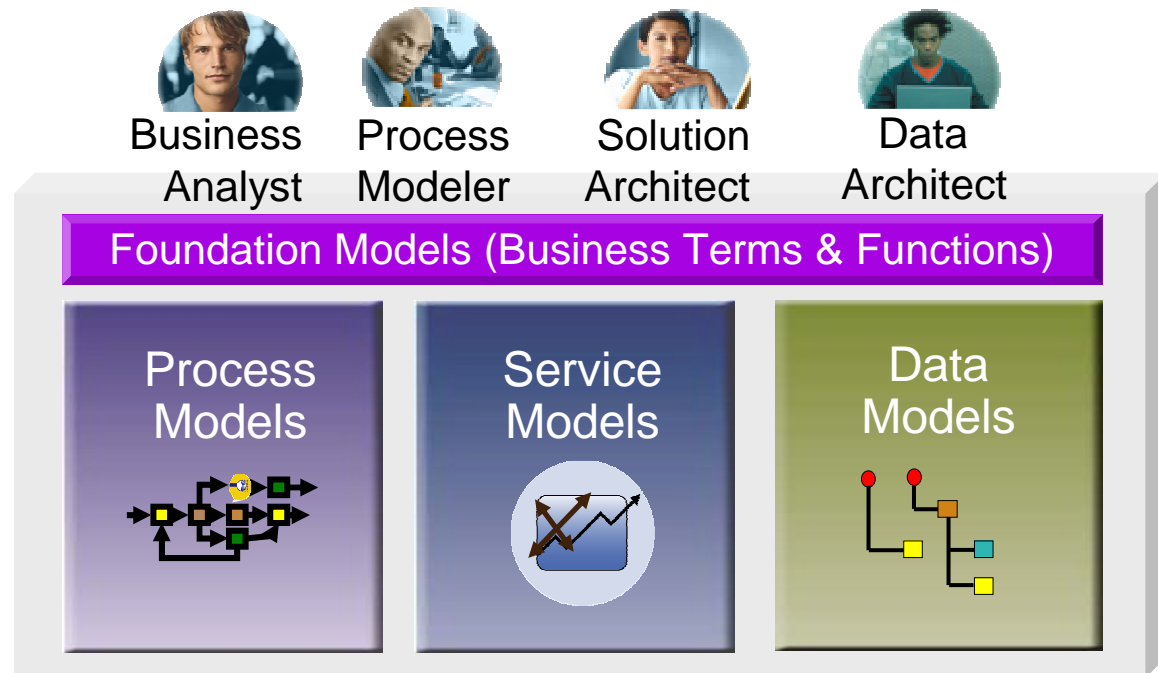
Insurance

210+ Workflows
 722+ Activities
 602+ Business Services

IBM Industry Model Portfolio

Content & Capabilities we offer...

- Enables business users to easily scope and customize their own requirements
- Facilitates step-by-step business focused development and roll-out
- Delivers regularly updated business, technical and regulatory content
- Creates open technology platform for any application or integration solution
- Manages definitions and standards in complex IT environments



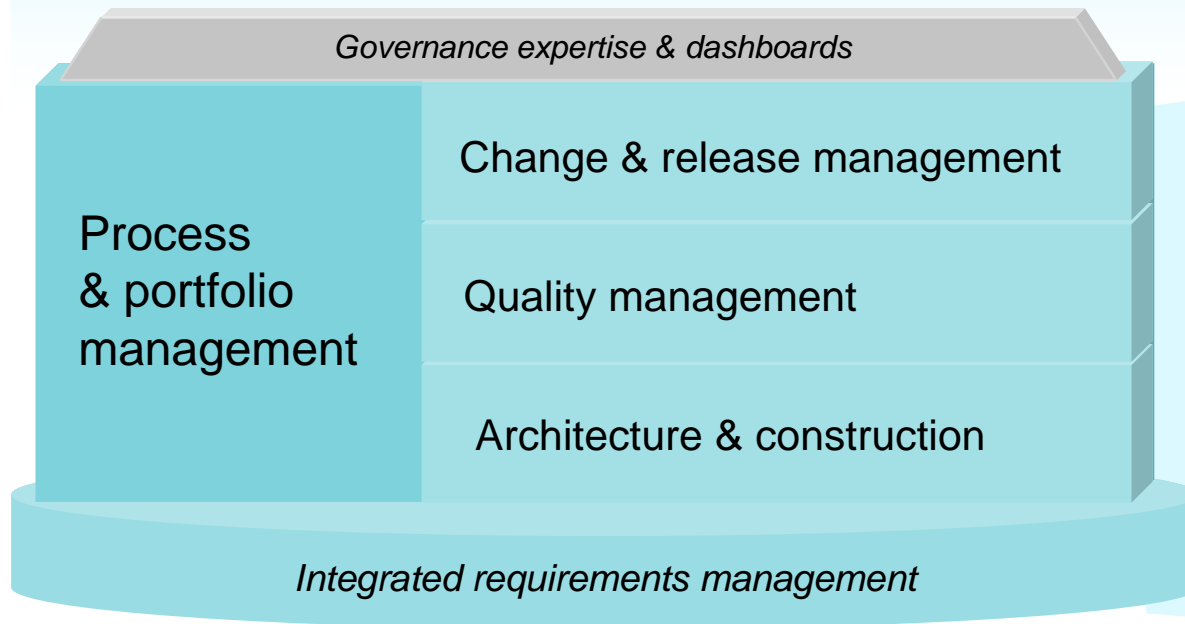
IBM Rational Software Delivery Platform

Capabilities we offer...



Rational. software

Process design and implementation best practices based on a market leading solutions delivery platform



- In-house
- Outsourced
- Packaged

Agenda

- Introduce & position IBM Financial Services Sector models & Software Delivery Platform

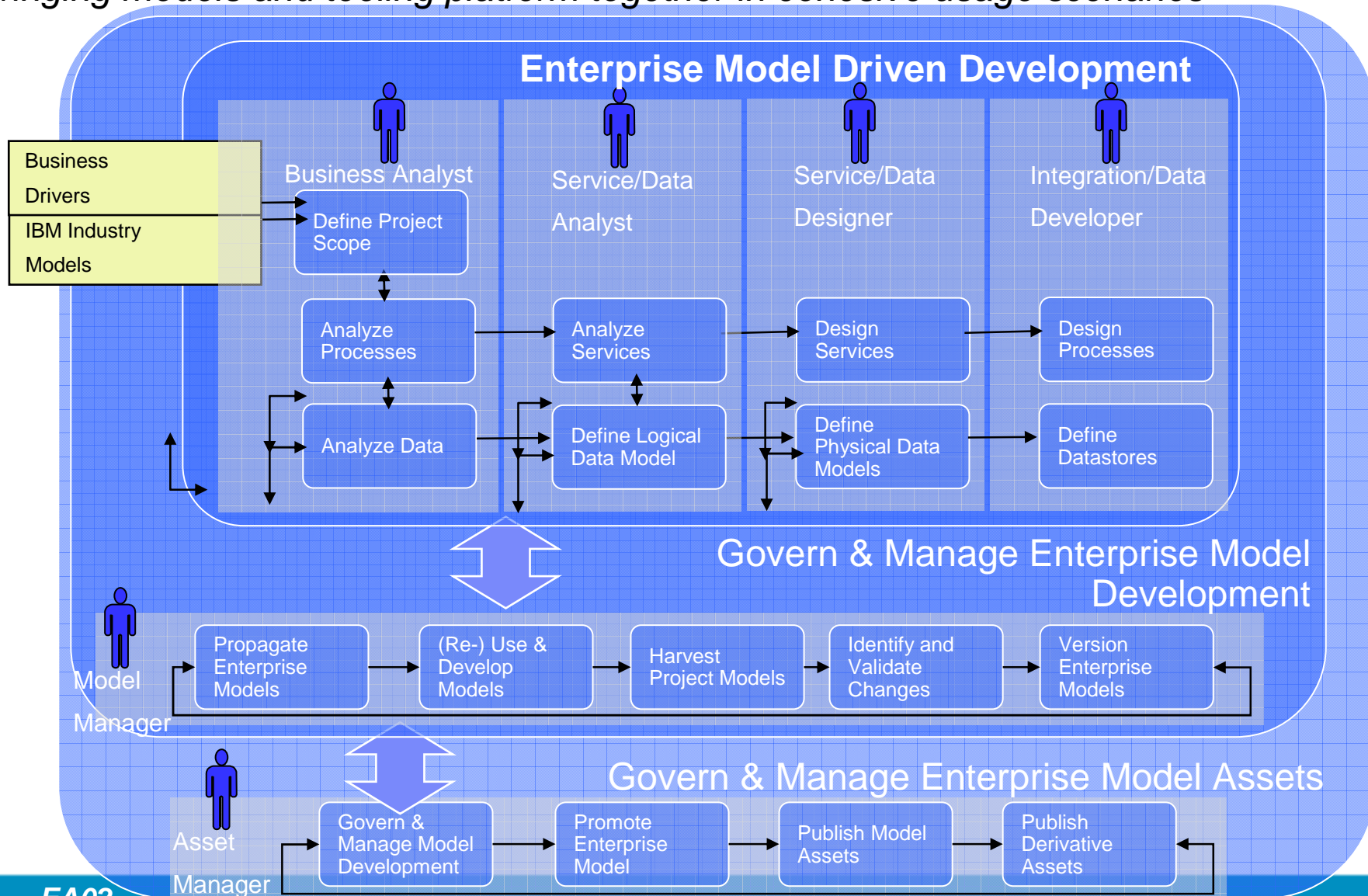


Introduce and review

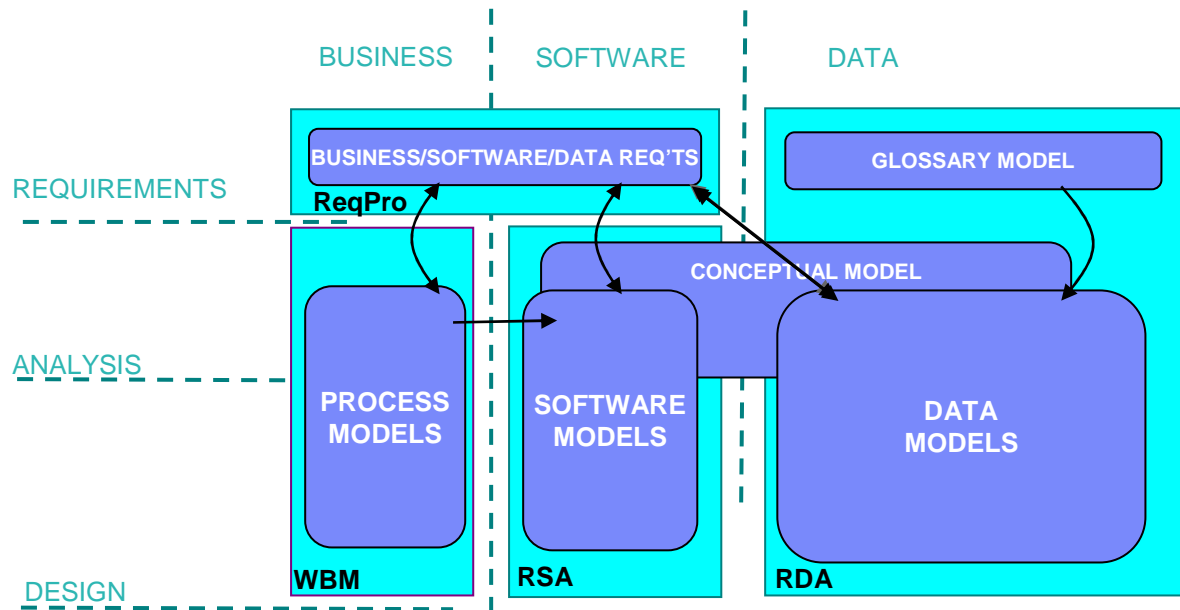
- ▶ Key Enterprise Modeling Usage Scenarios
 - ▶ High-Level and Detailed Models & Associated Landscape
- Key Capabilities and Tooling Required to Support
 - ▶ “Enterprise Model Driven Development” scenario
 - ▶ “Governance and Manage Enterprise Model Driven Development” scenario
 - ▶ “Govern and Manage Enterprise Model Assets” scenario

Enterprise Model Driven Development, Management & Governance

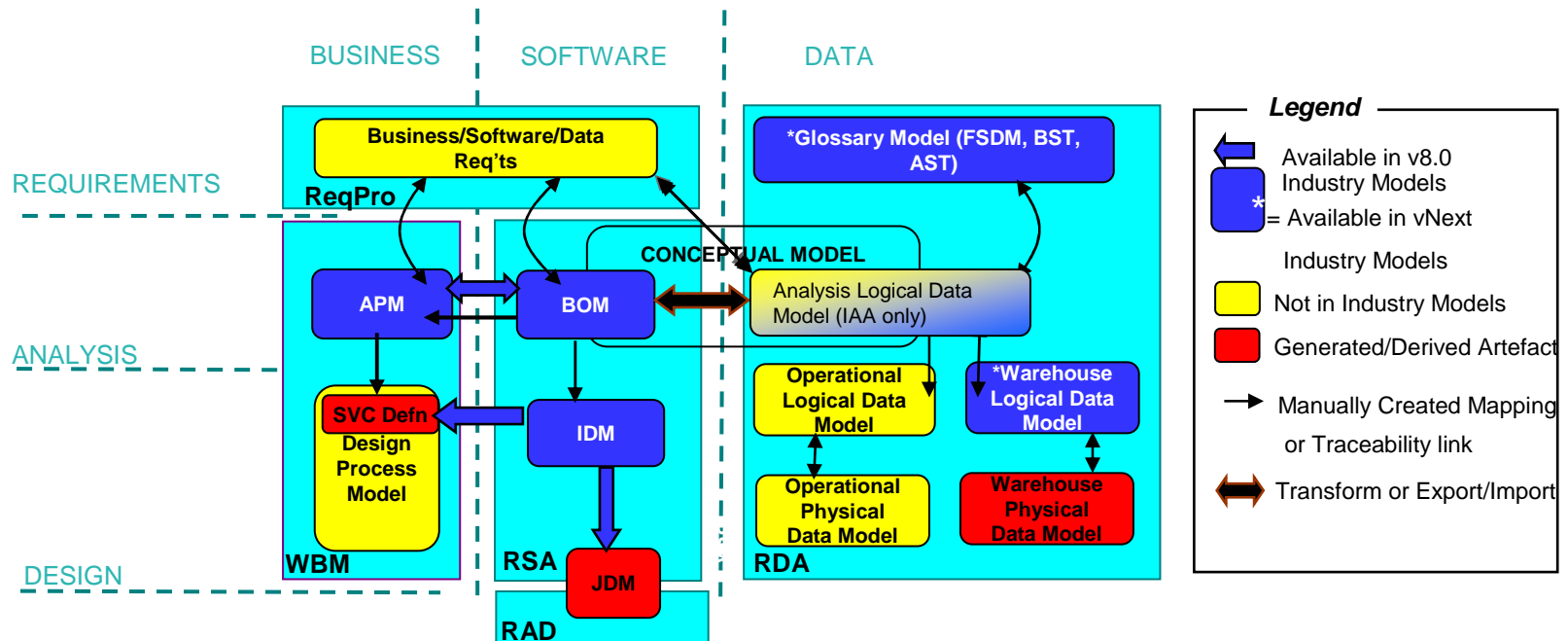
Bringing models and tooling platform together in cohesive usage scenarios



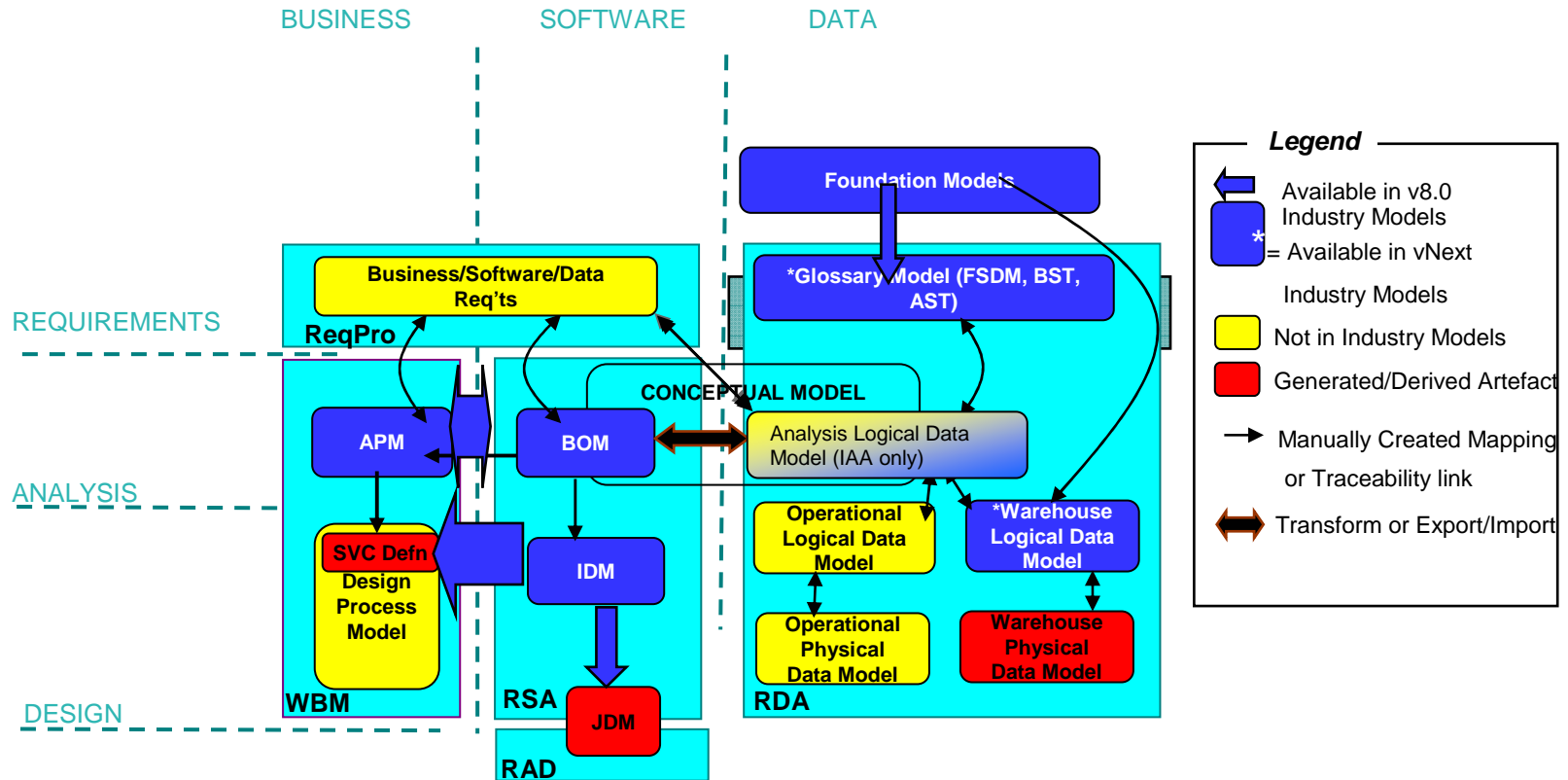
High level model and tooling landscape



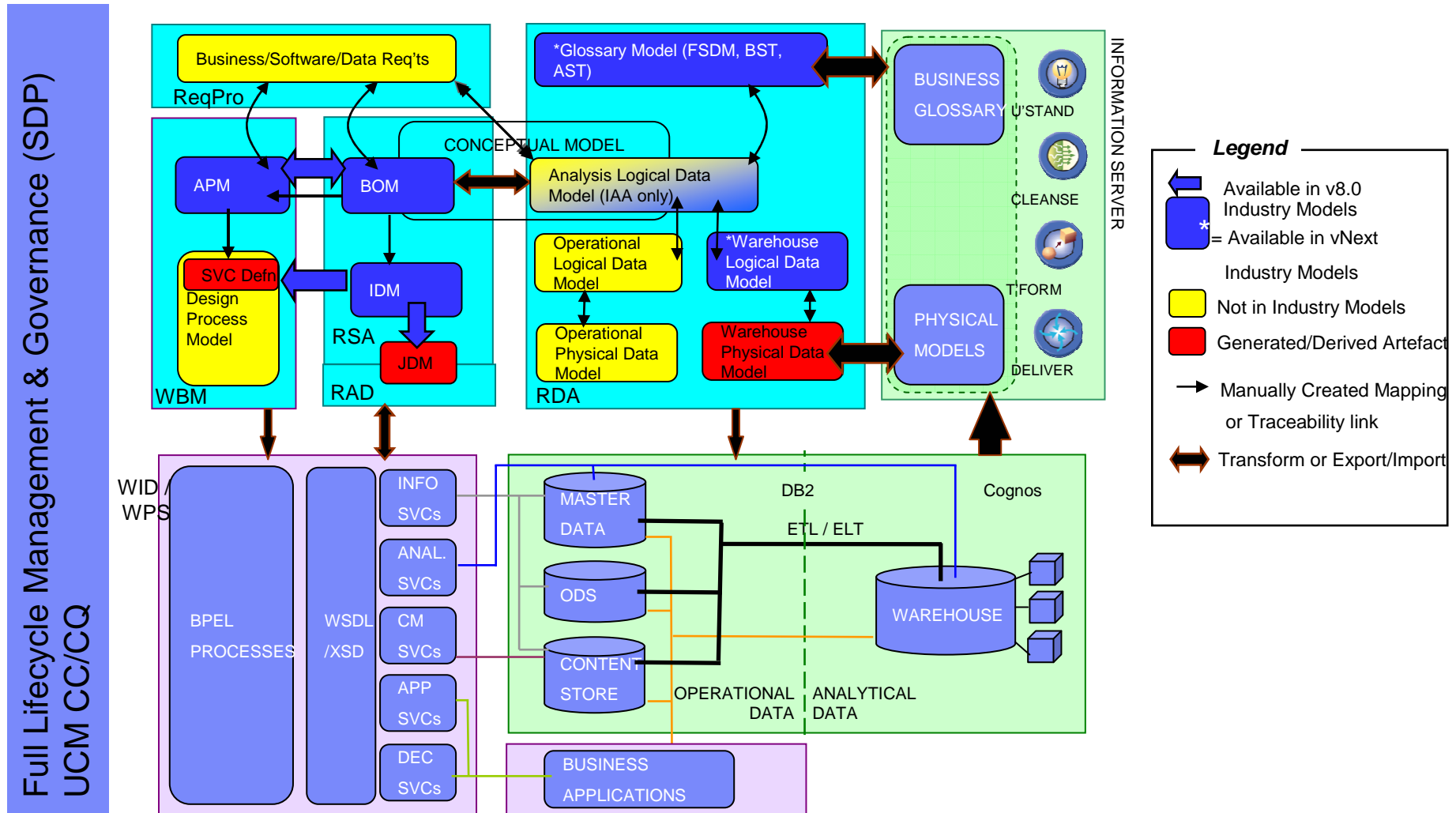
Detailed v8 models and SDP tooling landscape



Detailed v8 models and SDP tooling landscape with optional EME for RDA



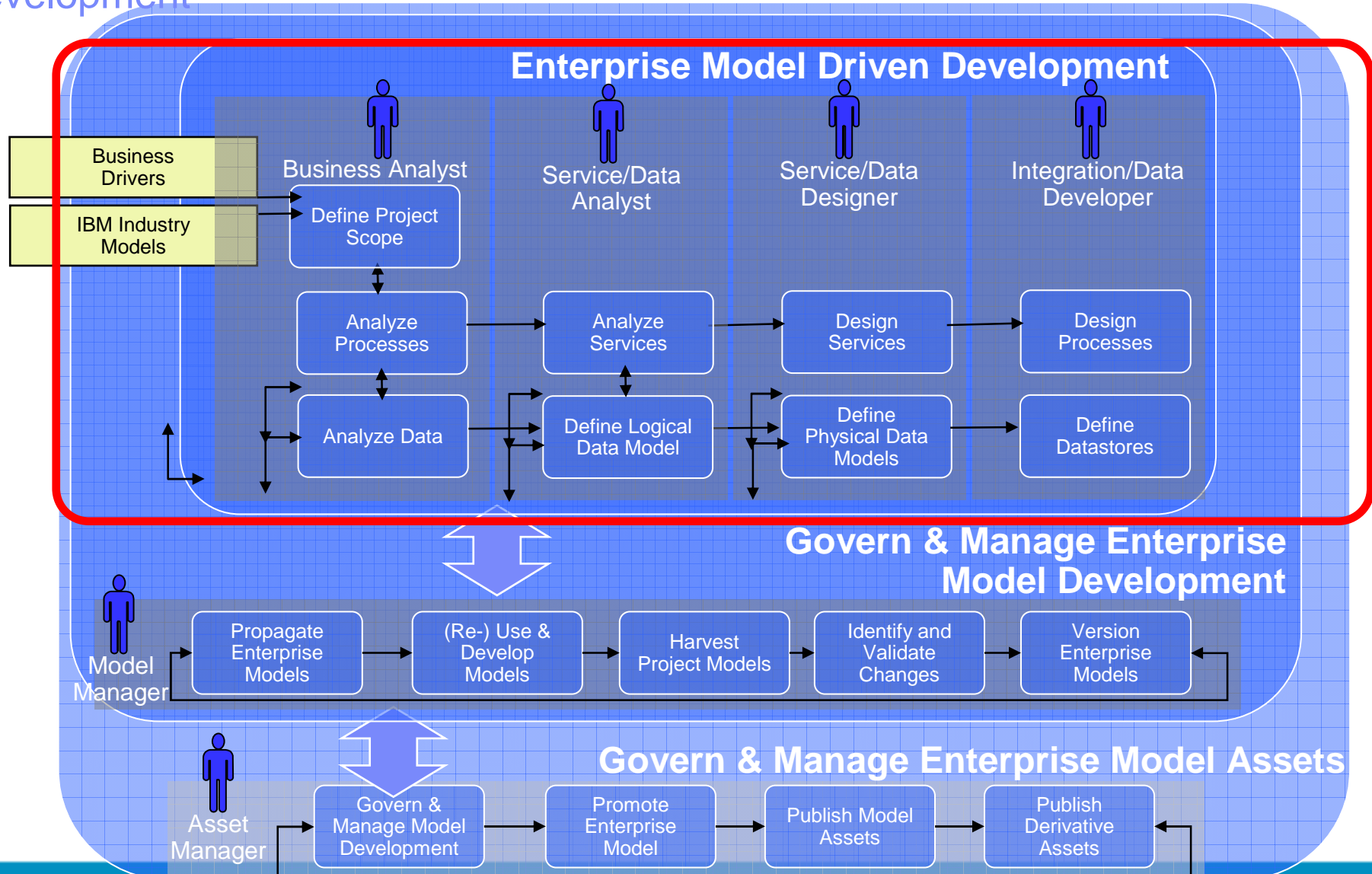
Detailed modeling, tooling and runtime landscape



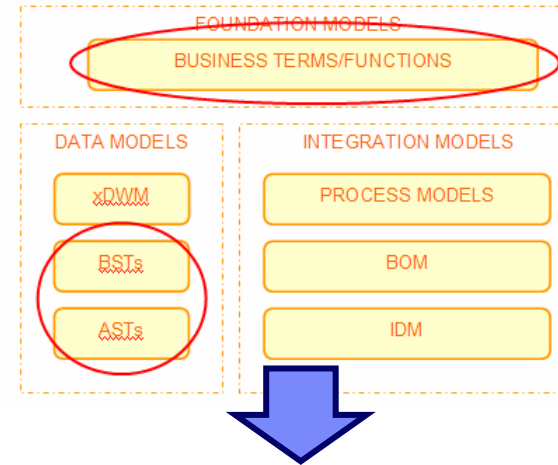
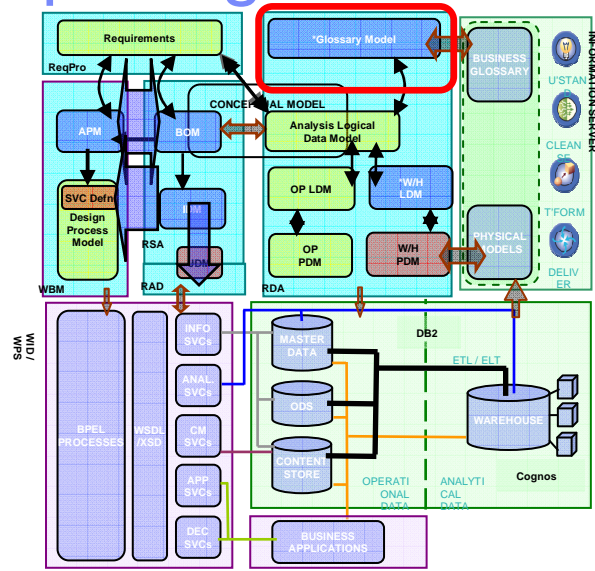
Agenda

- Introduce & position IBM Financial Services Sector models & Software Delivery Platform
- Introduce and review
 - ▶ Key Enterprise Modeling Usage Scenarios
 - ▶ High-Level and Detailed Models & Associated Landscape
- ▶ Key Capabilities and Tooling Required to Support
 - ▶ “Enterprise Model Driven Development” scenario
 - ▶ “Governance and Manage Enterprise Model Driven Development” scenario
 - ▶ “Govern and Manage Enterprise Model Assets” scenario

Part One: Key Capabilities and Tooling to support Enterprise Model Driven Development

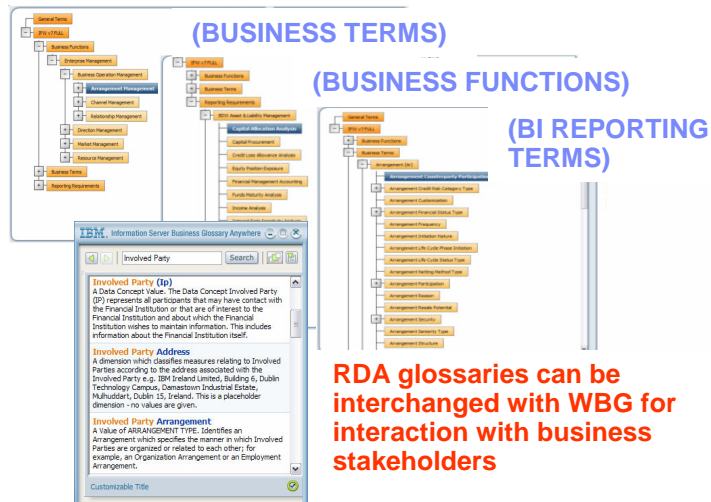


Exposing Business Terms through Glossaries

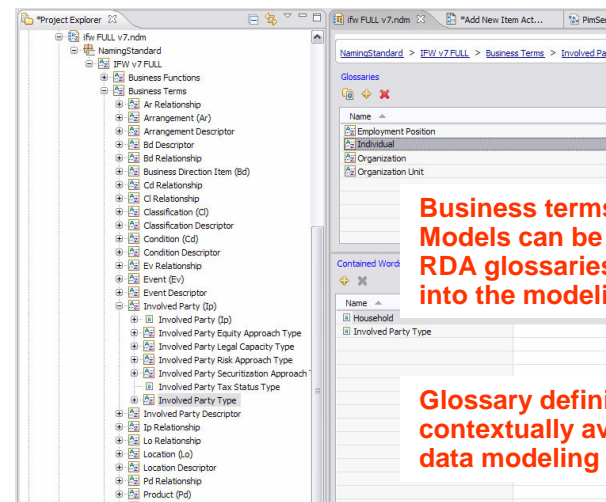


RDA GLOSSARY MODEL

WEBSPHERE BUSINESS GLOSSARY



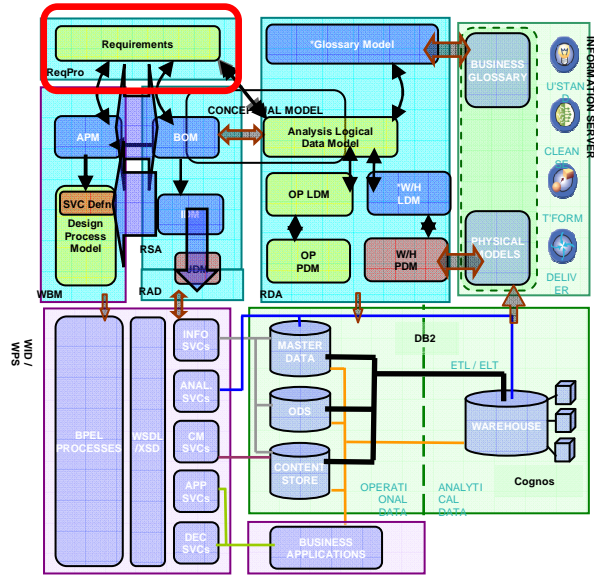
RDA glossaries can be interchanged with WBG for interaction with business stakeholders



Business terms from Industry Models can be exported to RDA glossaries for integration into the modeling domain

Glossary definitions contextually available during data modeling

Defining and Managing Requirements



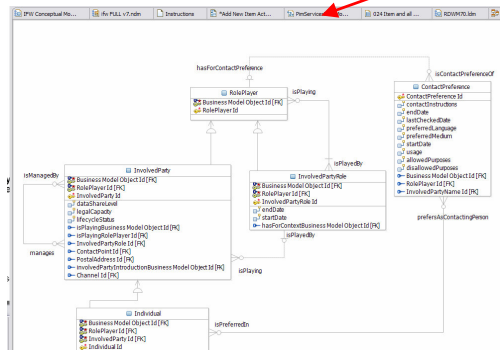
Rational RequisitePRO

- ▶ GOAL1: Increase Customer Closure Rate by 15%
- ▶ FUNC1.1.3: Arrangement Negotiation
 - ▶ BUC19: Activate Banking Product Arrangement
 - ▶ BUC27: Activate Deposit Arrangement
 - ▶ BUC41: Activate Loan Arrangement
 - ▶ BUC47: Activate Transfer Service Arrangement
 - ▶ BUC83: Provide Arrangement Proposal
 - ▶ BUC100: Provide Banking Product Arrangement Offer
 - ▶ BUC104: Provide Deposit Arrangement Offer
 - ▶ BUC108: Provide Loan Arrangement Offer
 - ▶ BUC109: Provide Transfer Service Arrangement Offer
 - ▶ BUC111: Review Offered Arrangement Status
 - ▶ BUC113: Review Proposed Arrangement Status
- ▶ GOAL2: Cost Reduction of 10% by 2007
- ▶ GOAL3: Increases Products Per Customer by 10% by 2007
- ▶ GOAL4: Increase Availability of On-Line Presence to 99.999%
- ▶ GOAL5: Reduce Risk of Regulatory Non-Compliance
- ▶ GOAL6: Increase Customer Self-Service via Internet to 85% by 2001
- ▶ GOAL7: Decrease Time to Market for New Products by 10% by 200

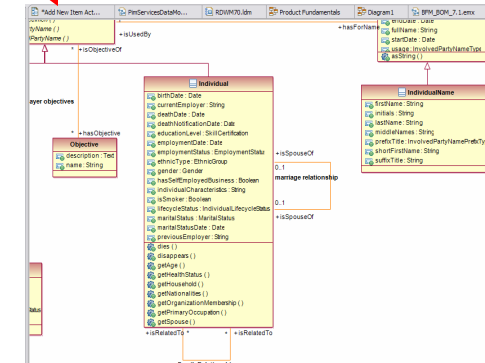
Requirements traceability between RequisitePro and all modeling tools

Business Project scopes and business driver traceability may optionally be managed in RequisitePro

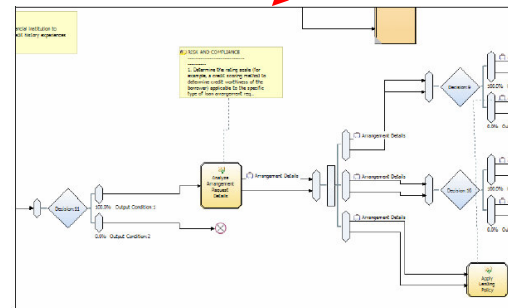
RDA



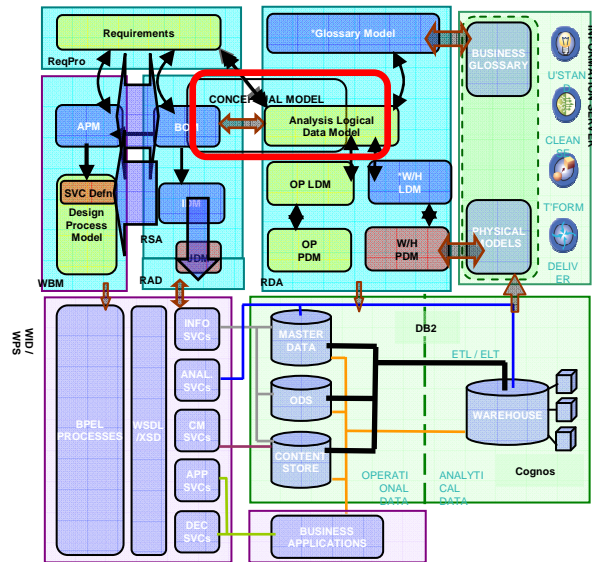
RSA



WBM

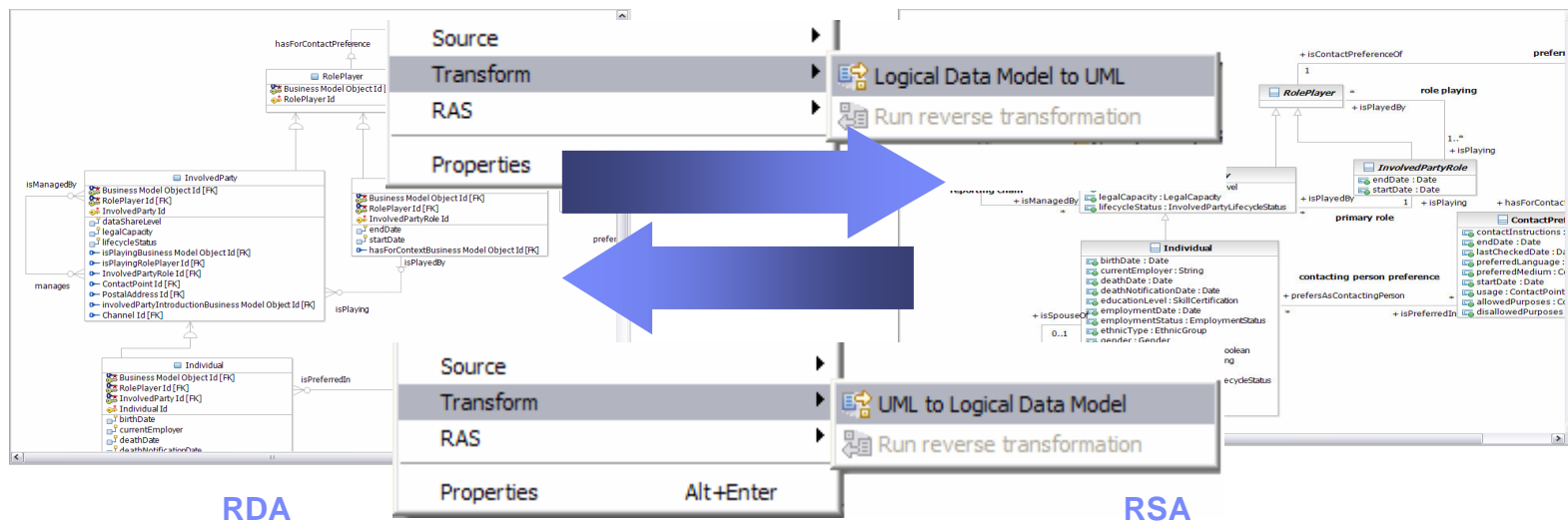


Managing Conceptual Models

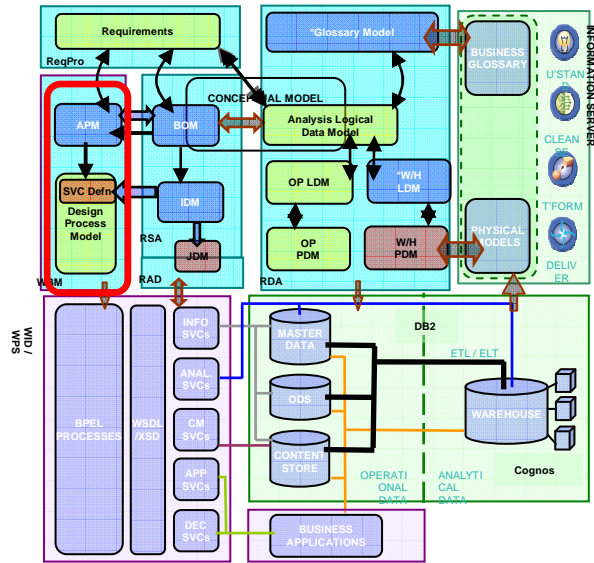


RDA / RSA ship with UML2LDM and LDM2UML transforms that support the interchange of a conceptual model between the Information Engineering and UML domains.

This supports the interchange of the Class Model in the Business Object Models (BOM) in RSA and a general purpose LDM in RDA.

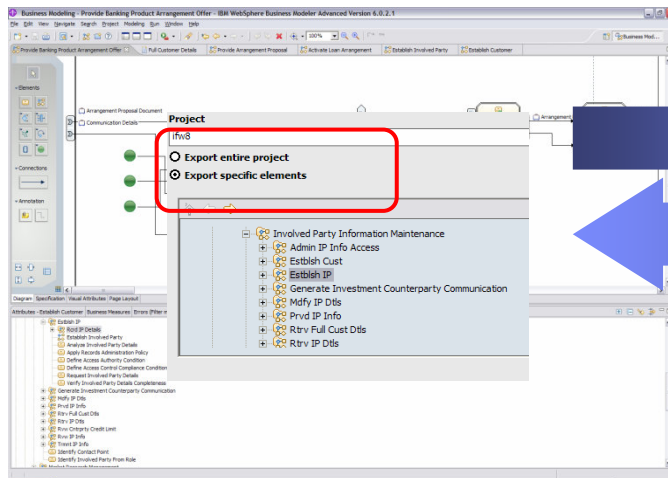


Process Modeling

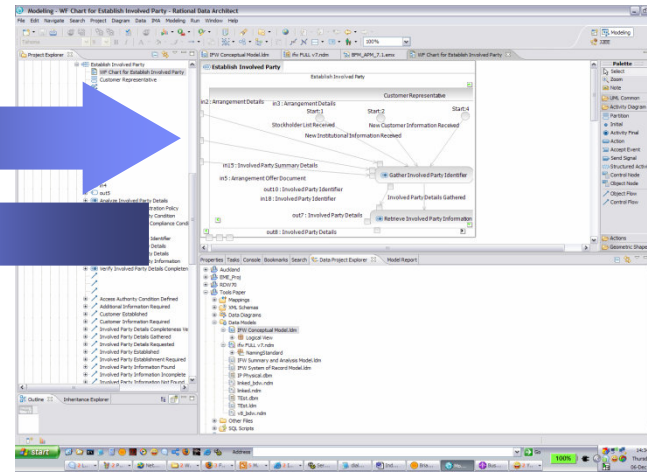


WebSphere Business Modeler (WBM) supports Industry Process modeling requirements.

WBM Models may be interchanged with RSA (as activity model) using Industry Model provided tooling to support process model management short term.

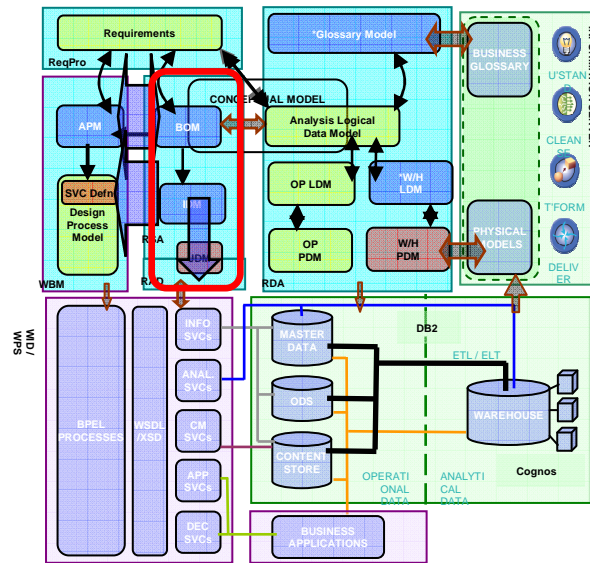


WBM



RSA

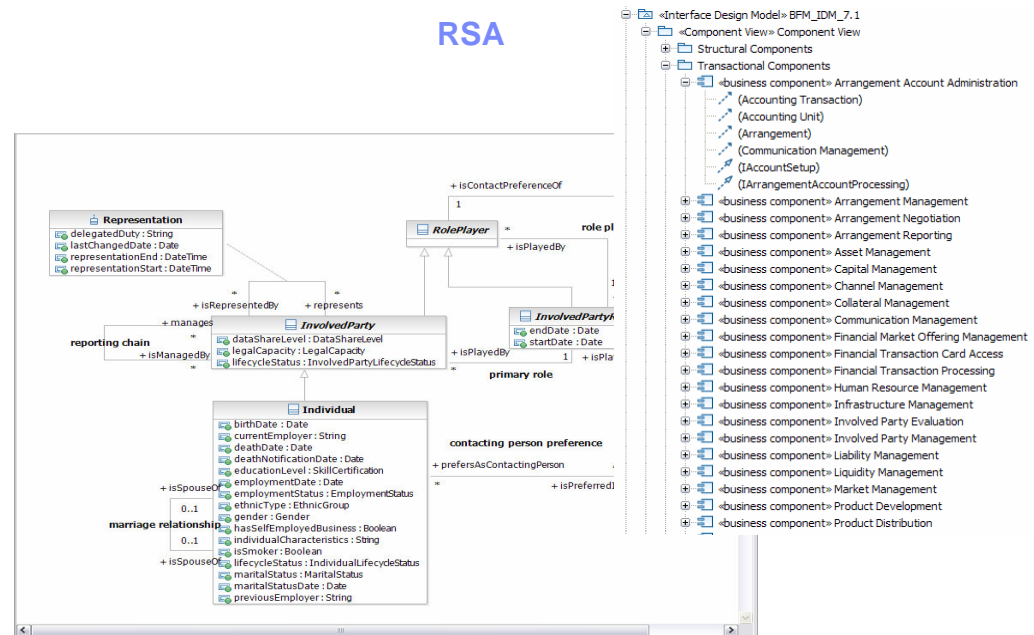
Service Analysis and Design



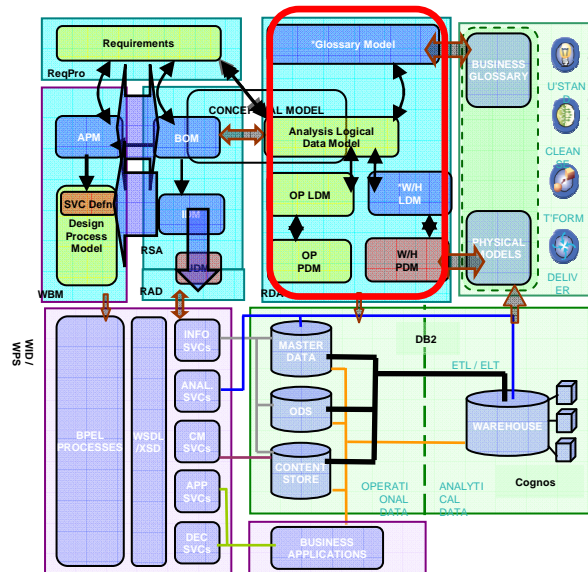
Industry models service analysis and design requirements supported natively by RSA through standard UML modeling techniques.

UML models are connected to the data domain through UML-LDM interchange.

UML models are connected to the process domain through the Industry Models WBM<->RSA bridge



Informational Analysis and Design

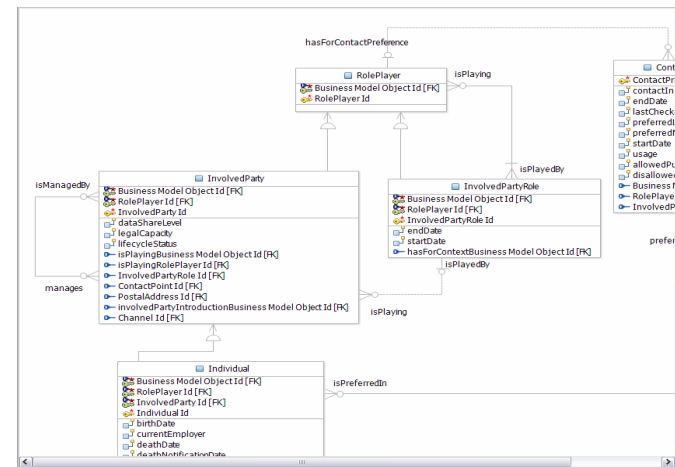


Industry models data analysis and design requirements supported natively by RDA including extensive mapping (MSL), generation and traceability requirements.

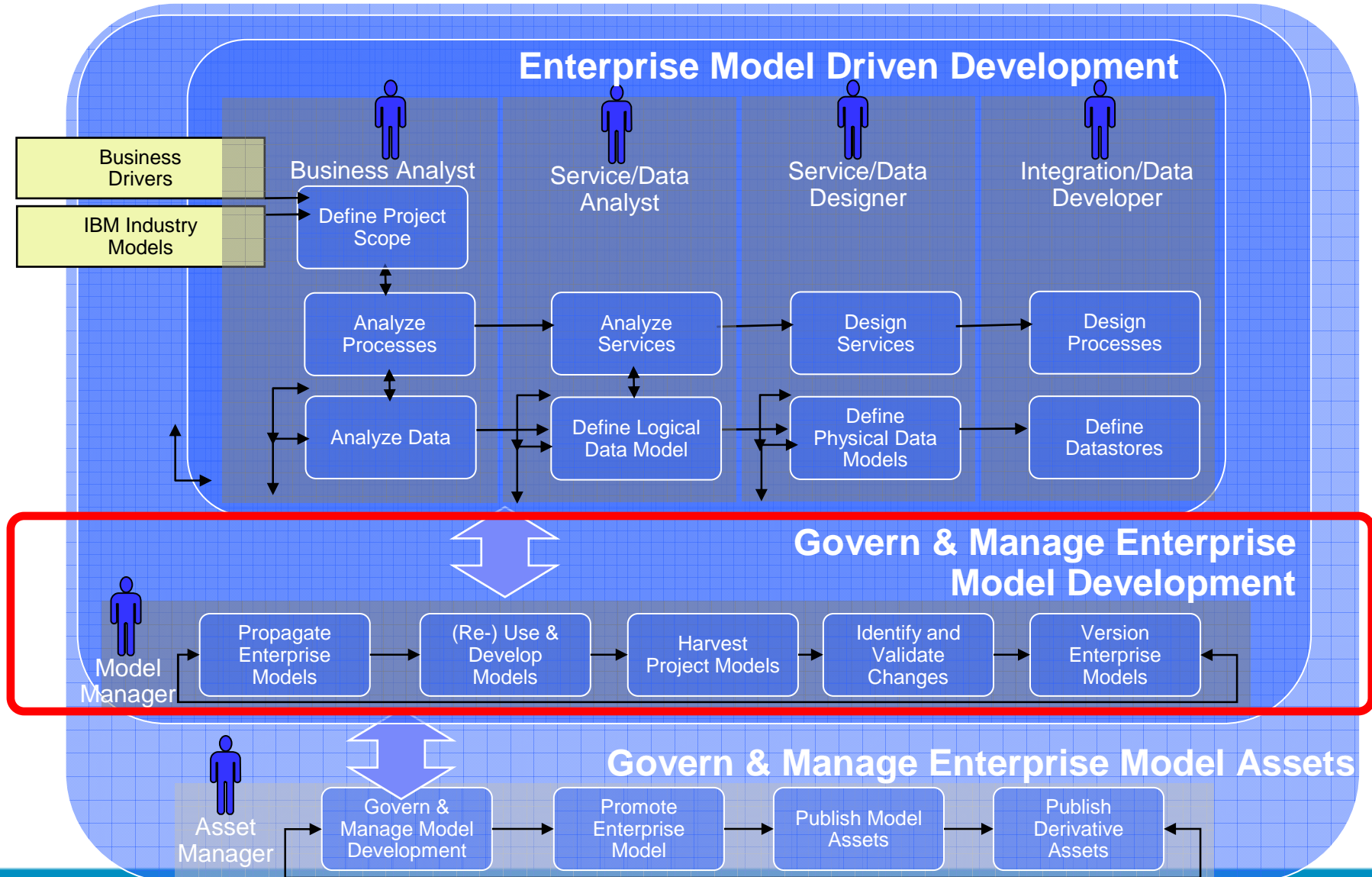
Data models may be traced to business terms in the form of glossary models.

Data models are connected to the UML domain through LDM-UML interchange.

RDA

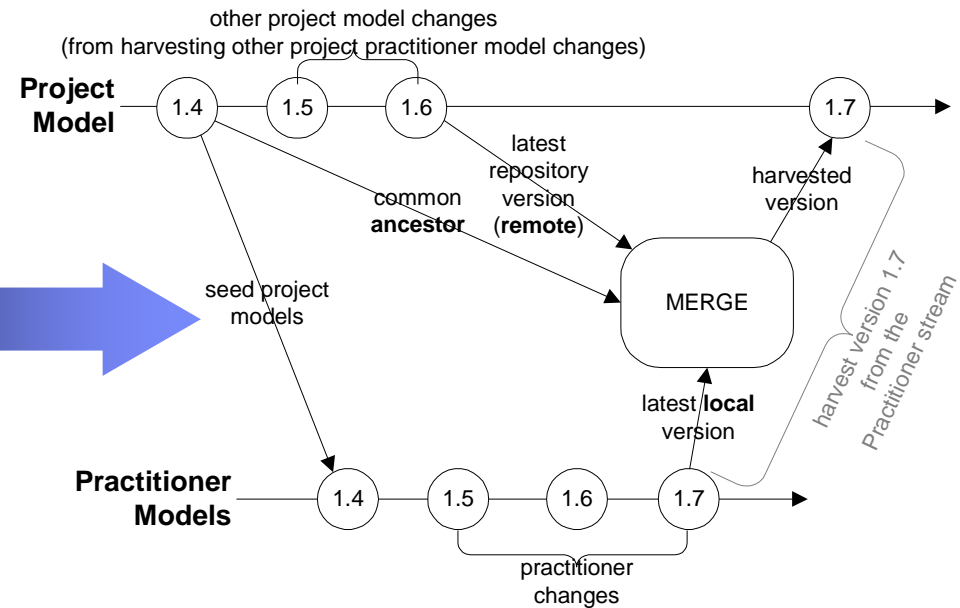
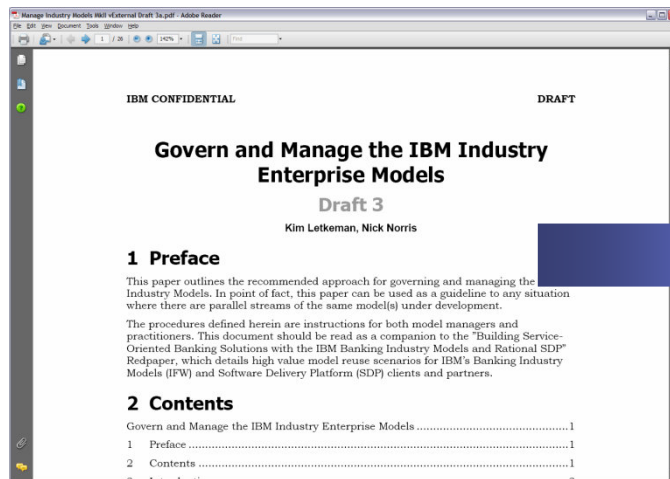


Part Two: Govern & Manage Enterprise Model Development



Model management through RSA/RDA with UCM CC/CQ

Structured model management guidelines exist leveraging the merge/compare capabilities of the SDP, and integrating with source management environments such as ClearCase or CVS.



These guidelines have been successfully piloted at a number of IFW customers.

Homogenous model management

RATIONAL CLEARCASE

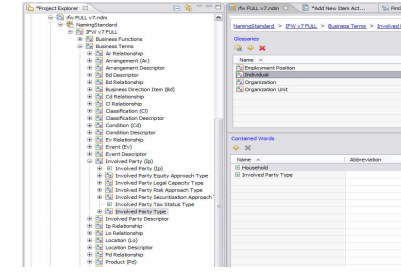
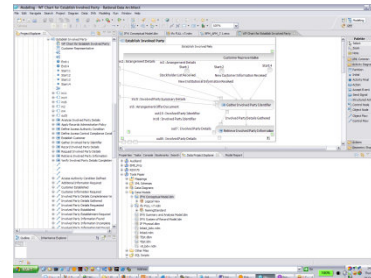
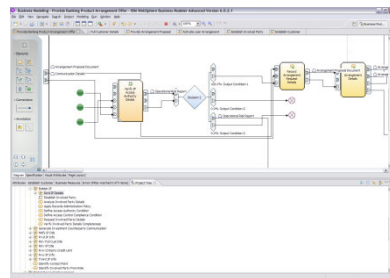
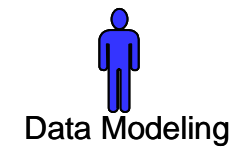
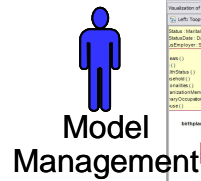
← **SCM based management of model artifacts during model development/customization projects**

← **Common SDP based merge/compare of:**

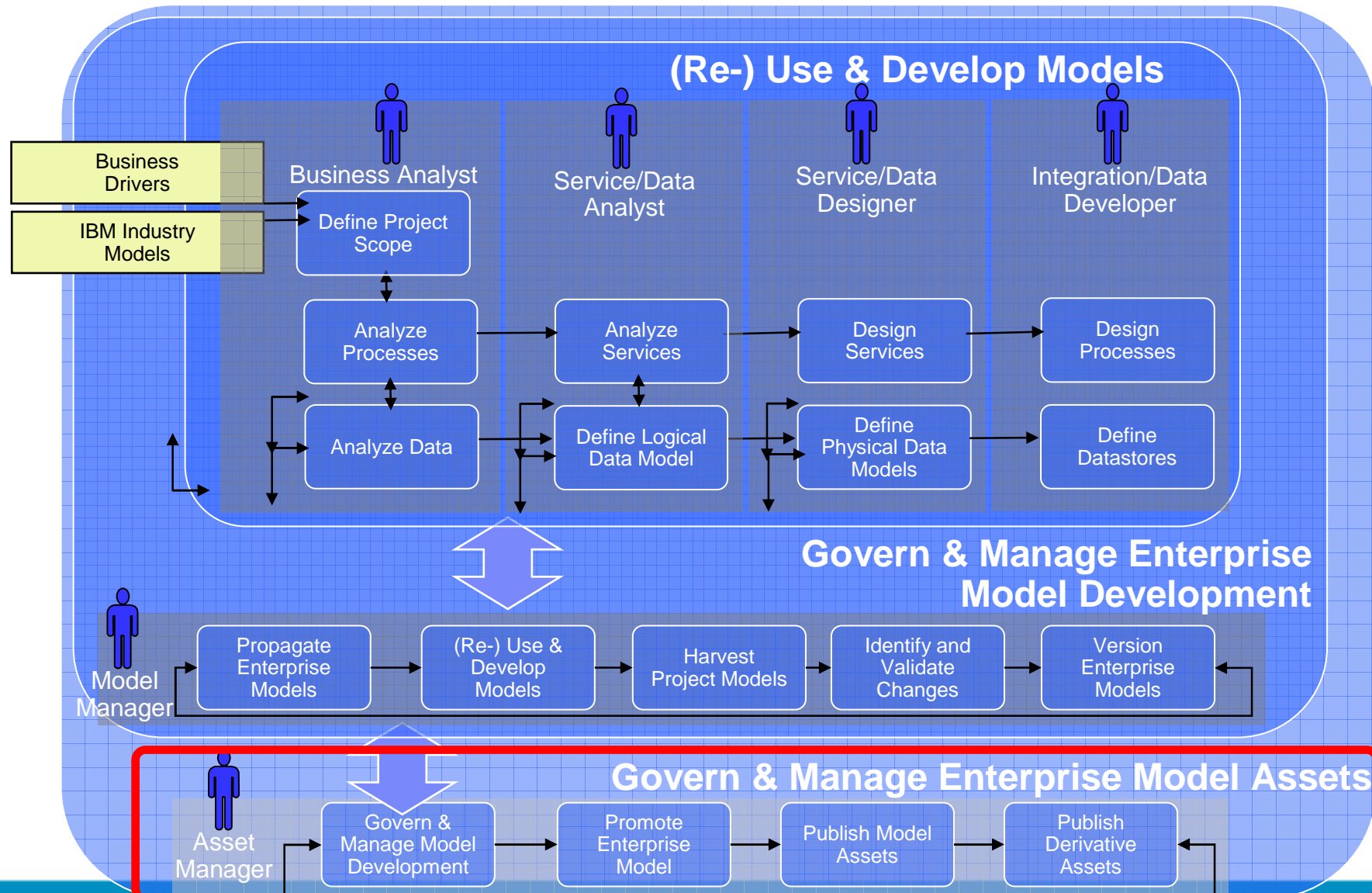
- **Glossaries (RDA)**
- **Processes (currently by import to RSA)**
- **UML models (RSA)**
- **Data Models (RDA)**

Model development/customization activities within dedicated modeling tools in accordance with Section 1

WBM Models may be interchanged with RSA activity models utilizing Industry Model provided tooling to support model management short term.



Part Three: Govern & Manage Enterprise Model Assets



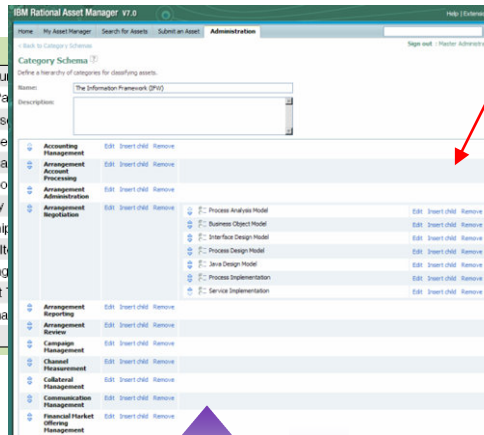
Asset Publication with RAM



Asset Management

BPM Process Catalog	
Accounting Management	Infrastructure
Arrangement Account Processing	Involved Pa
Arrangement Administration	Market Res
Arrangement Negotiation	Physical Se
Arrangement Reporting	Product Ma
Arrangement Review	Product Mo
Campaign Management	Profitability
Channel Measurement	Relationship
Collateral Management	Resource It
Communication Management	Risk Manag
Financial Market Offering Management	Settlement
Financial Resource Management	Supply Cha
Human Resource Management	

RATIONAL ASSET MANAGER

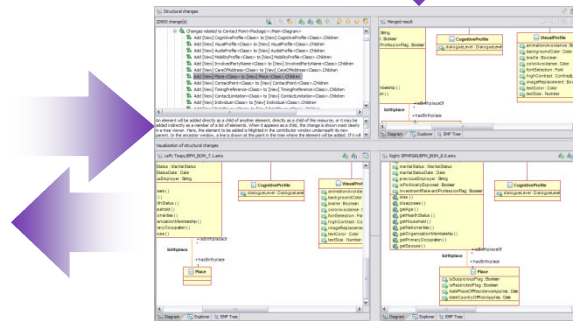


Extensive asset management, search and relationship capabilities



Enterprise Model Consumers

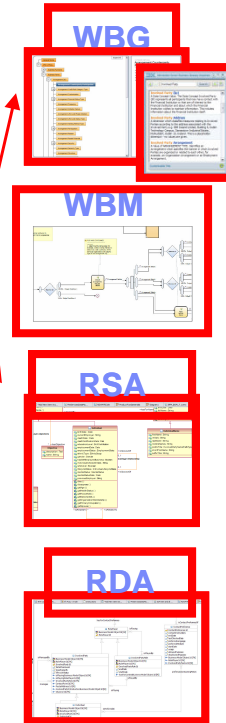
RATIONAL CLEARCASE



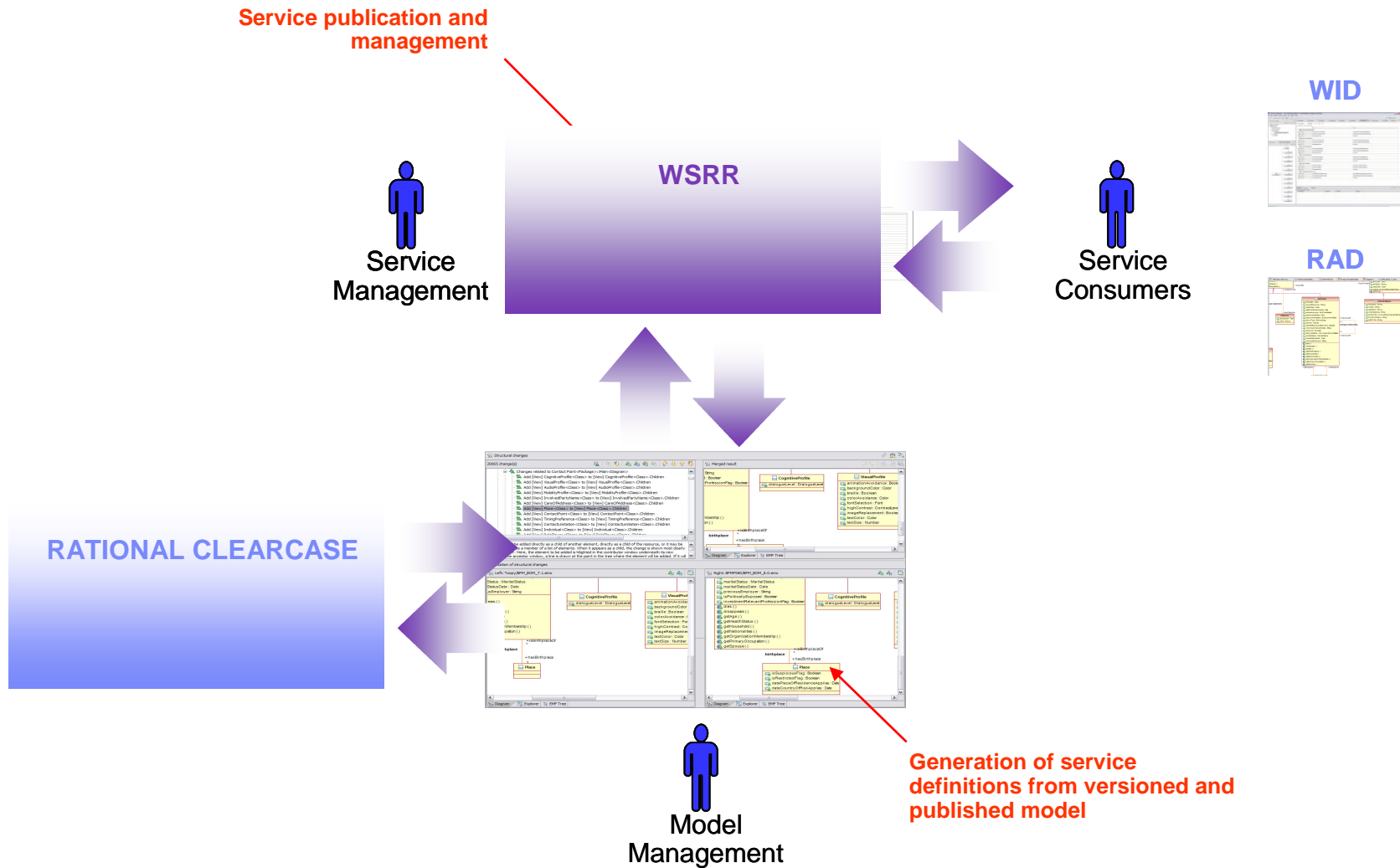
Model Management

Different levels of integration b/wn Modeling tools & RAM

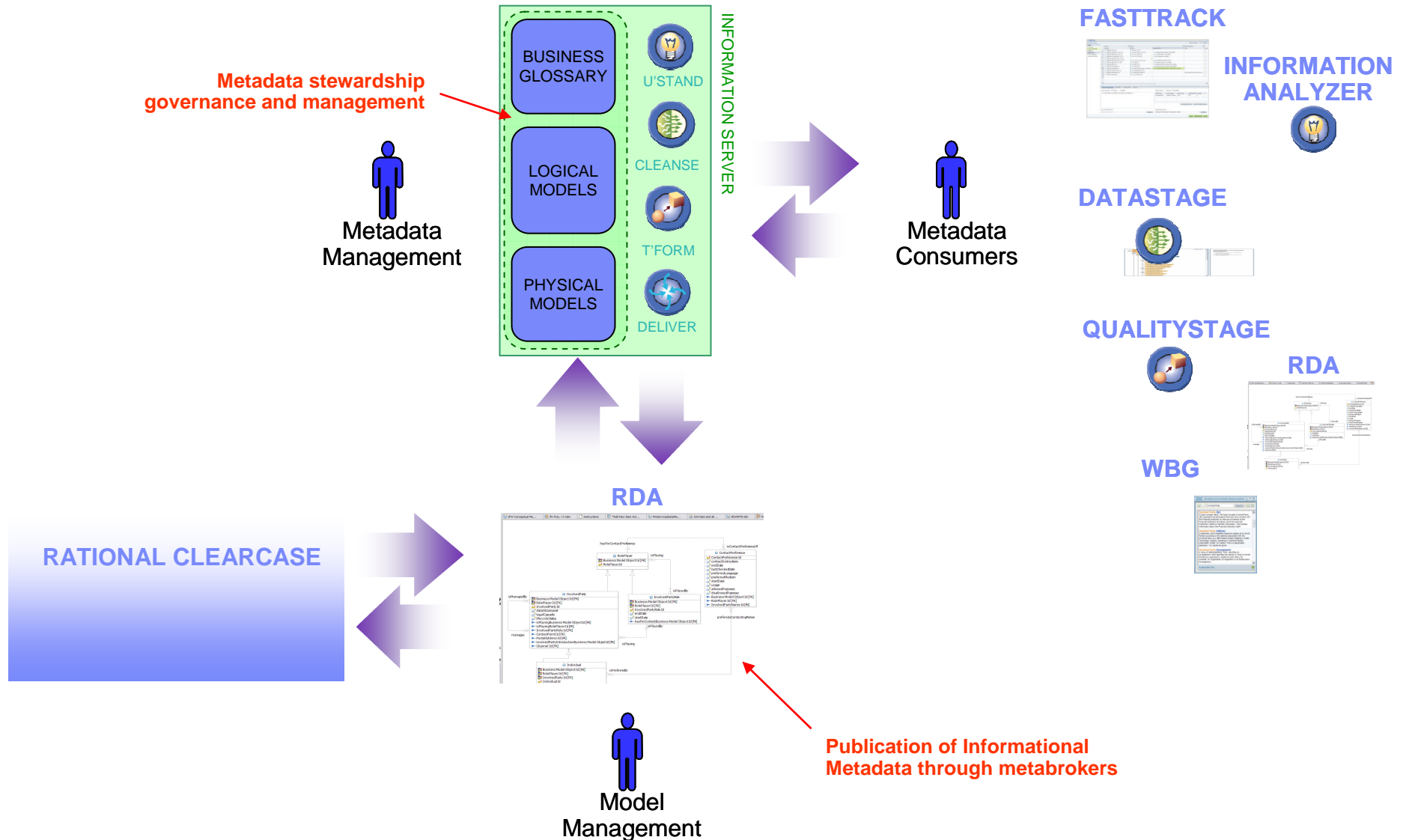
Accepted and ratified model version to be published into enterprise



Service Publication with WSRR



Metadata management with Information Server



References

- RSDC US Hands On Workshop: *“Enabling Enterprise Architecture -- Managing Parallel Model Driven Development using IBM Industry Models and SDP”* (Wednesday, June 4th, 10:00 a.m – 1:00 p.m.) by Chris Busch, Magda Bologna, Nick Norris

- DevWorks articles –
 - ▶ *“Comparing and merging UML models in IBM RSA”* (series) by Kim Letkeman
 - ▶ *“Enterprise Model Governance and Management”* by Kim Letkeman, Nick Norris (pending)

- Redbook – *“Building Service-Oriented Banking Solutions with the IBM Banking Industry Models and Rational SDP”* by Nick Norris, Brian Byrne, Brian Yarow
(<http://www.redbooks.ibm.com/redpieces/abstracts/redp4232.html?Open>)



QUESTIONS



THANK YOU

Learn more at:

- [IBM Rational software](#)
- [IBM Rational Software Delivery Platform](#)
- [Process and portfolio management](#)
- [Change and release management](#)
- [Quality management](#)
- [Architecture management](#)
- [Rational trial downloads](#)
- [Leading Innovation Web site](#)
- [developerWorks Rational](#)
- [IBM Rational TV](#)
- [IBM Rational Business Partners](#)

© Copyright IBM Corporation 2008. All rights reserved. The information contained in these materials is provided for informational purposes only, and is provided AS IS without warranty of any kind, express or implied. IBM shall not be responsible for any damages arising out of the use of, or otherwise related to, these materials. Nothing contained in these materials is intended to, nor shall have the effect of, creating any warranties or representations from IBM or its suppliers or licensors, or altering the terms and conditions of the applicable license agreement governing the use of IBM software. References in these materials to IBM products, programs, or services do not imply that they will be available in all countries in which IBM operates. Product release dates and/or capabilities referenced in these materials may change at any time at IBM's sole discretion based on market opportunities or other factors, and are not intended to be a commitment to future product or feature availability in any way. IBM, the IBM logo, the on-demand business logo, Rational, the Rational logo, and other IBM products and services are trademarks of the International Business Machines Corporation, in the United States, other countries or both. Other company, product, or service names may be trademarks or service marks of others.