

The Rational 2.0 Roadmap – Powered by Jazz

Michael O'Rourke
VP, Rational Software Development
mikeorou@us.ibm.com



IBM Rational Software Development Conference 2008

WHERE TEAMS ARE **R-HEROES**



Rational. software

The defining challenge in collaborative software delivery

Failure to communicate and collaborate across silos

2/3 of stakeholders are dissatisfied with the speed or quality of corporate software development

50% of outsourced projects are expected to underperform

Silos of people, process, and projects inhibit collaboration

Geographic Barriers

- Poor communication
- Language, cultural and time differences
- Lengthy project and team member on-boarding
- High degree of friction across teams

Organizational Barriers

- Lack of meaningful stakeholder input
- Process gaps resulting in errors and rework
- Poor LOB oversight
- Weak project governance

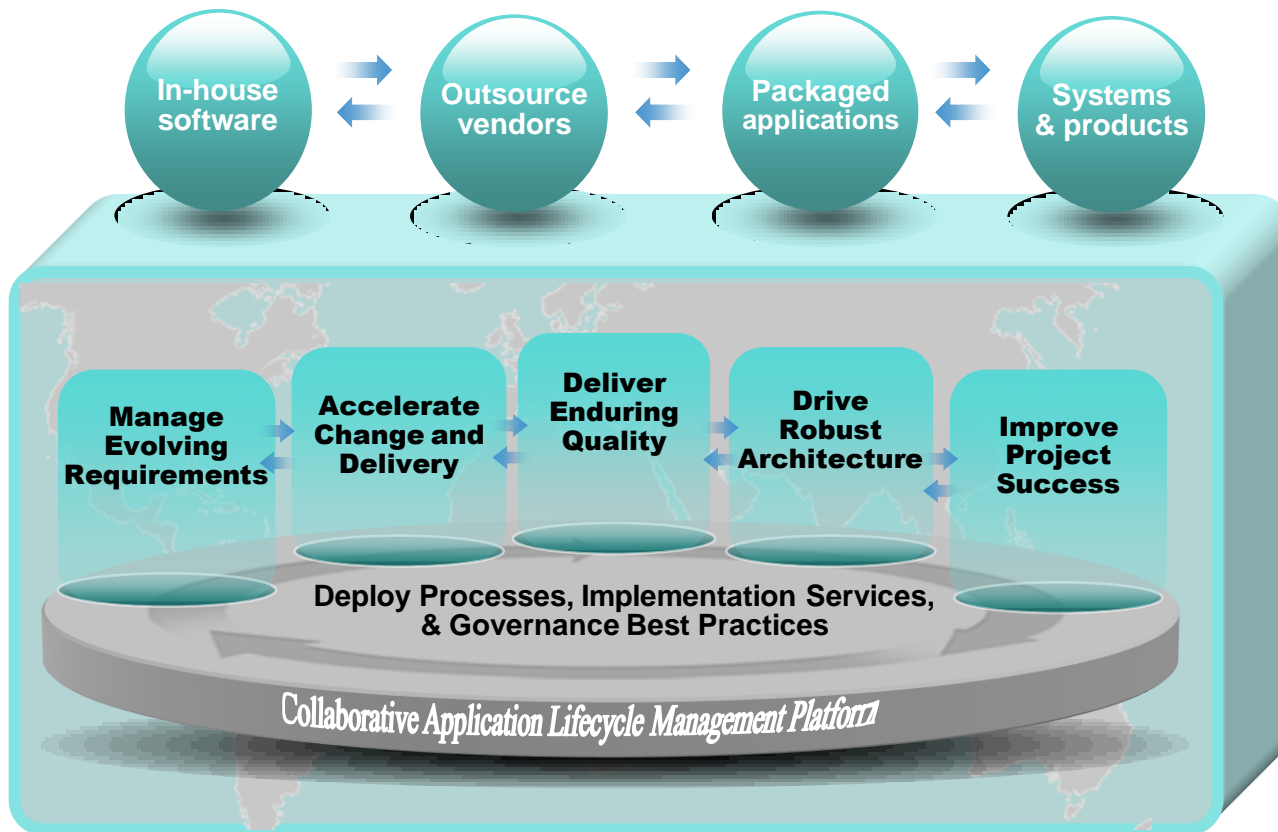
Infrastructure Barriers

- Incompatible tools and repositories
- Unreliable access to common artifacts
- Brittle and inflexible tooling integrations

IBM Rational Software Delivery Platform

Rational. software

***Solutions** to help customers achieve greater value and performance from their investments in software*



- **Enterprise Modernization and Transformation**
- **Organizational Governance**
- **Skill Development and Community**
- **Implementation Services**

What if Your Tools Knew and Supported...



Your Development Policies...

- ✓ Mandatory Peer reviews completed?
Unit tests run? Code quality rules checked?



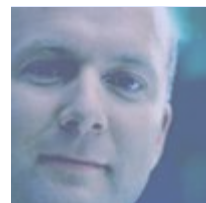
Who is on Your Team...

- ✓ How to assist new team members in getting started



When an error occurs ...

- ✓ Reliable history of who did what and why. Assistance to unwind or correct.



Accurate, real-time status of progress and quality

- ✓ Linkage of progress to plan, completion and quality trends

We Call This “Collaborative ALM”

Requirements of a Collaborative ALM Solution

Improve Team collaboration

- ✓ Presence, chat, document sharing, blogs, discussion groups and bulletin boards
- ✓ Access through browser, Eclipse, MSVS.NET
- ✓ Custom dashboards and reporting, configurable RSS feeds, notifications
- ✓ Integration with Lotus Quickr, Microsoft Sharepoint

Encourage Process Excellence

- ✓ Build process awareness into individual and team activities and workflows (process enactment)
- ✓ Support a broad portfolio of best practices, including out-of-the-box processes—or create your own
- ✓ Enable flexible rules enforcement at key checkpoints
- ✓ Anticipate common errors and automate correction
- ✓ Provide built-in support for best practices, e.g. continuous build, just-in-time code reviews, traceability, integrated change management

Balance Governance & Autonomy

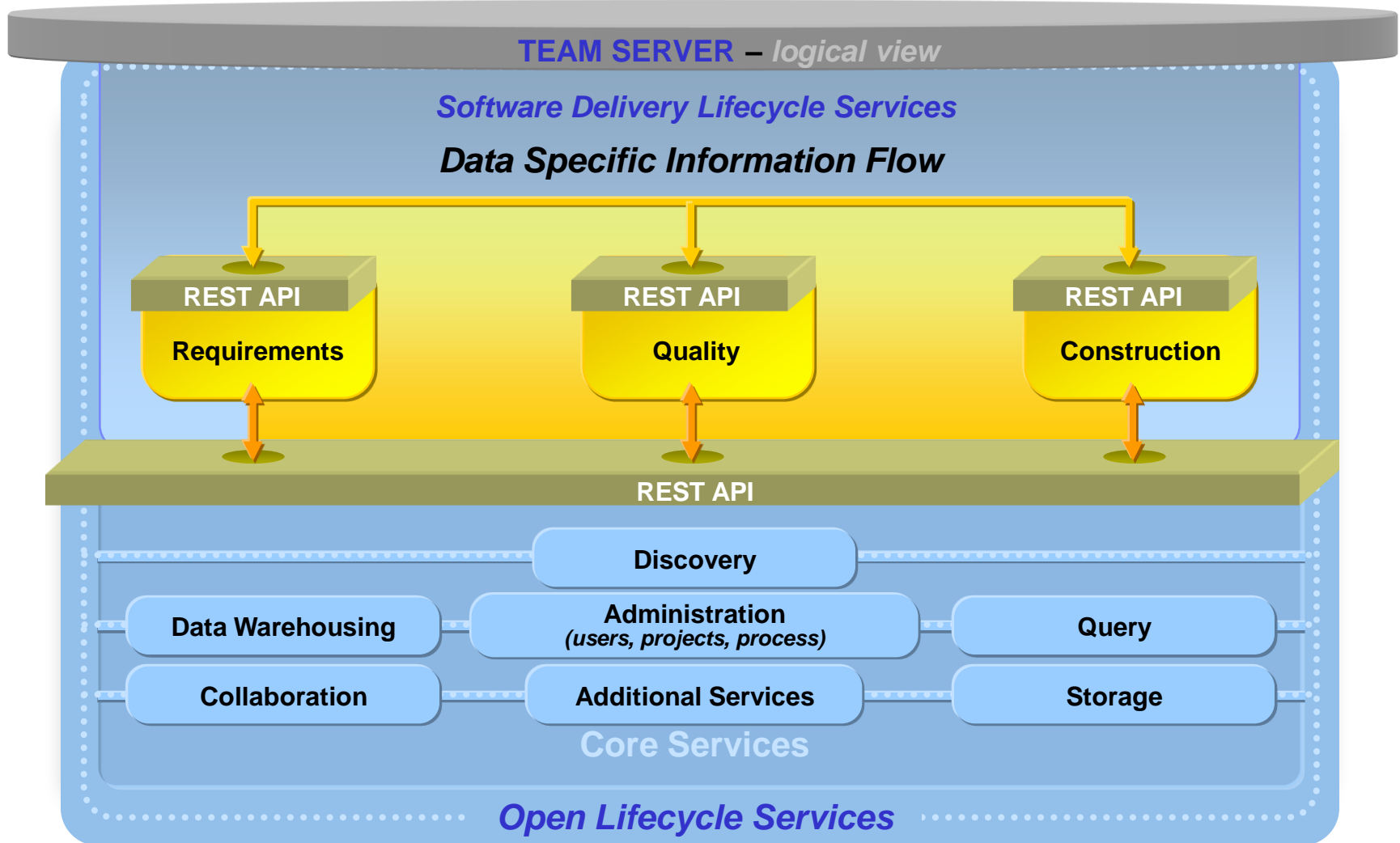
- ✓ Collect project data automatically and unobtrusively
- ✓ Deliver fact-based metrics, not estimates
- ✓ Provide real-time view of individual, project and team status and trending
- ✓ Support pre-defined, custom, and personal queries, dashboards and reports
- ✓ Provide metric-based tracking for CMMI, MCIF or any capability improvement program

Reduce Total Cost of Ownership

- ✓ Enable efficient on-boarding of projects and teams
- ✓ Streamline LDAP user access and administration
- ✓ Leverage existing investments in servers, storage, messaging and service management
- ✓ Enable interoperability with home-grown, third party and open source tools
- ✓ Leverage a rich partner ecosystem with hundreds of sales and support partners, worldwide

Software Delivery Lifecycle

Via Web-based Architecture



Rational's Vision

Open, Web-centric, Services-based

Existing Offerings

New Offerings

Business Partner Offerings

Best Practice Processes

In-Context Collaboration

TEAM SERVER

Open Lifecycle Services

Client Integrations

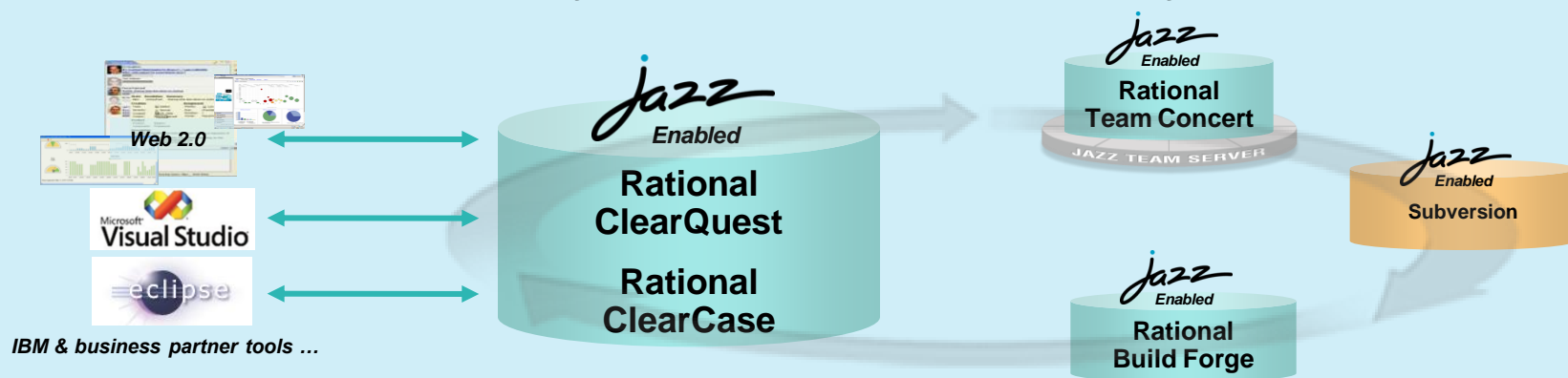
- Eclipse
- Web 2.0
- Visual Studio (4Q)

Server Integrations

- Existing Rational/Telelogic offerings
- Business partner offerings
- Open source offerings (Subversion, etc.)

Enhanced Enterprise-Class Change and Release Management

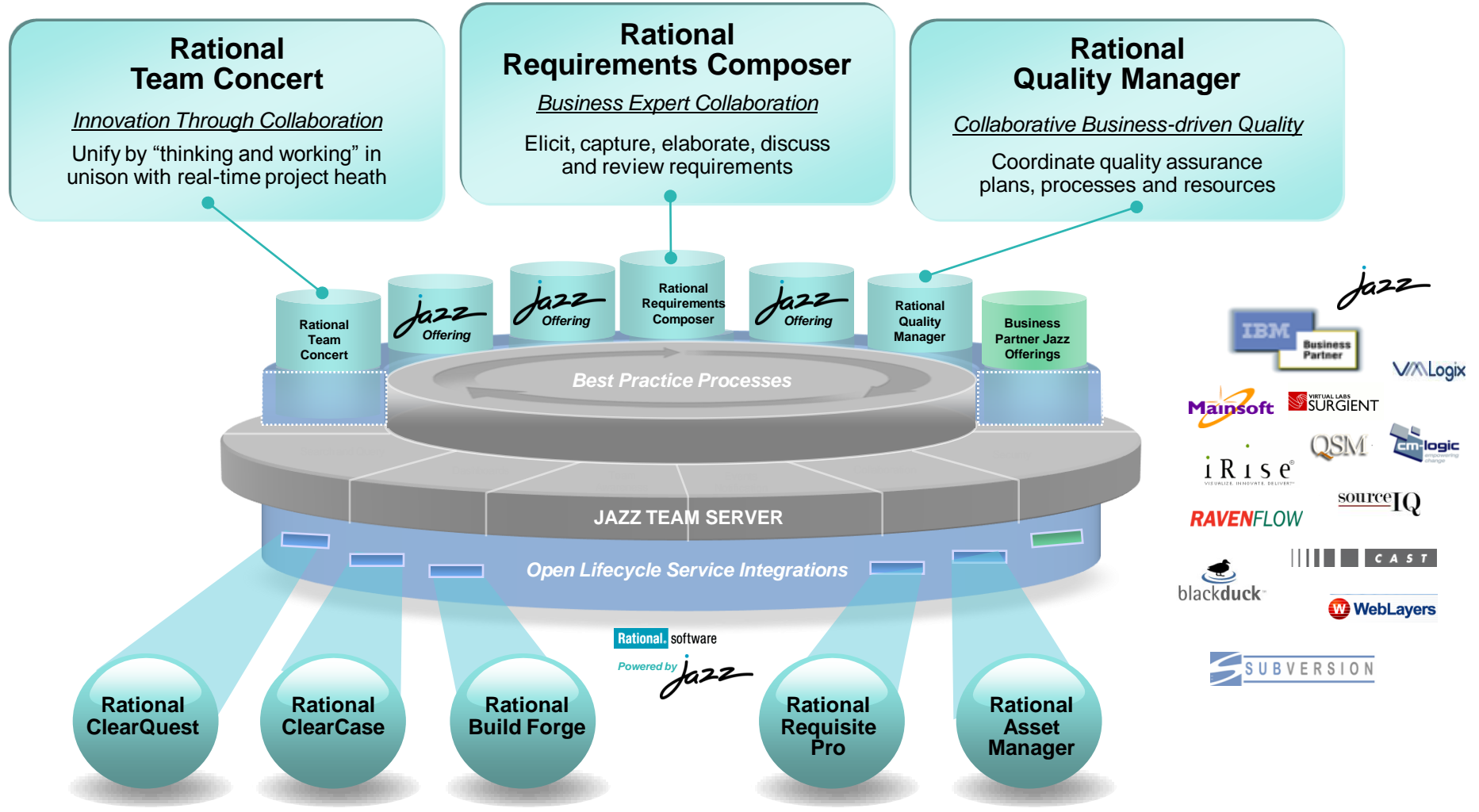
Achieving new levels of enterprise integration, scalability, security, performance and usability



	<i>Rational ClearQuest – New! Enhancements</i>	<i>Rational ClearCase – New! Enhancements</i>
Collaborate in Context	<ul style="list-style-type: none"> Work item synch with Team Concert (Jazz) New browser-based client built on Web 2.0 	<ul style="list-style-type: none"> Seamless shared project views and filters Deploy faster with iteration planning with Team Concert (Jazz)
Right-size Governance	<ul style="list-style-type: none"> Ensure compliance with fine grained security and access control lists Support remote teams with enterprise reports 	<ul style="list-style-type: none"> 24/7 Global monitoring and server uptime view React sooner with customizable event settings
Day One Productivity	<ul style="list-style-type: none"> Out-of-the-box ALM Schema – jump start complete lifecycle support 	<ul style="list-style-type: none"> Agile process support High scalability – handle 500 users

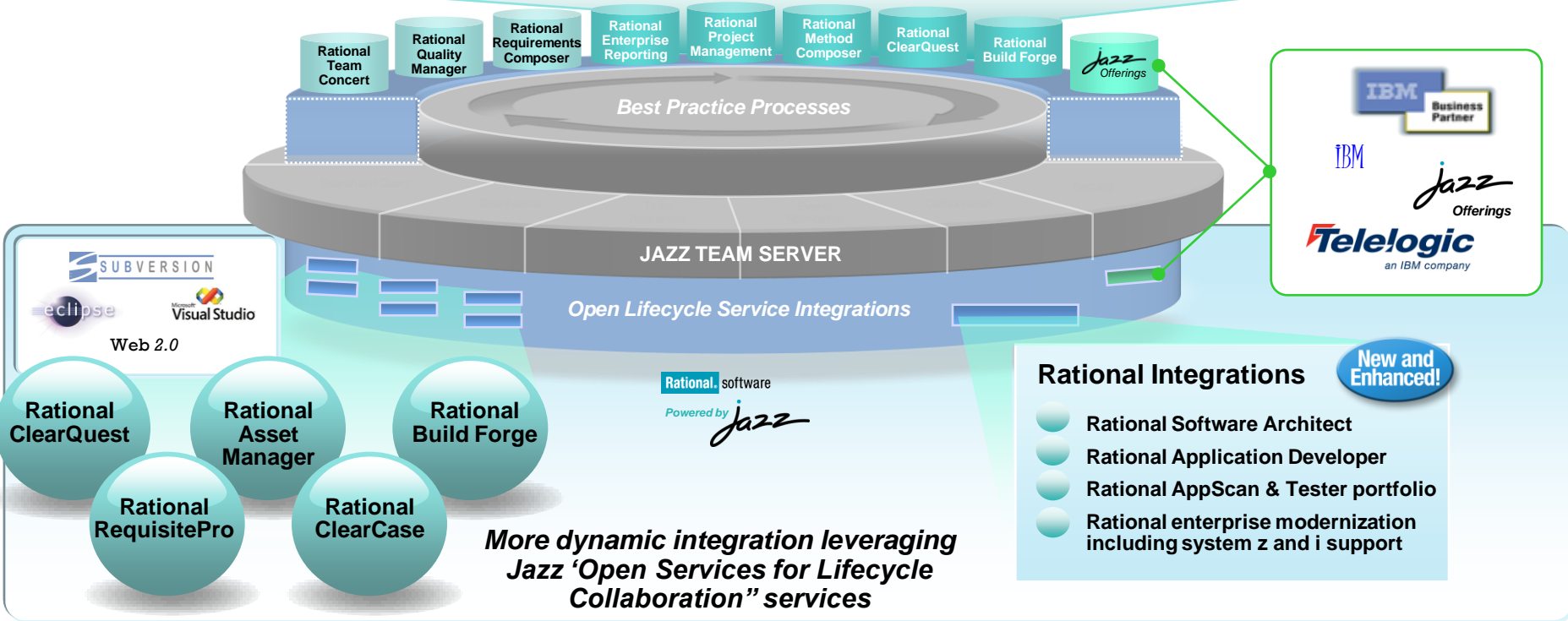
And there is more in 2008!

Phase 2 – Expanding Collaborative ALM



The Road Ahead

Phase 3 – Jazz offerings beyond 2008



Collaborate with us

Design Partner Program

Lab Advocacy Program

Board of Advisors

Voice of the Customer Events

Rational Software Development Conference

jazz.net

developerWorks

Beta Programs

RFE Community

Rational User Groups

Customer Acceleration Program



➔ Learn more at www.ibm.com/software/rational/collaborate



THANK YOU

Learn more at:

[IBM Rational software](#)

[IBM Rational Software Delivery Platform](#)

[Process and portfolio management](#)

[Change and release management](#)

[Quality management](#)

[Architecture management](#)

[Rational trial downloads](#)

[Leading Innovation Web site](#)

[developerWorks Rational](#)

[IBM Rational TV](#)

[IBM Rational Business Partners](#)

RU READY TO
SAVE THE DAY



IBM Rational Software Development Conference 2008

WHERE TEAMS ARE **R-HEROES**



Rational. software