

ZI4: Modernising Your UIs and IDEs: Enterprise Modernisation for SOA with HATS, WDHT and WDz

Rod Little / Russell Bonner
IBM Software Business
rod_little@uk.ibm.com / bonnerr@uk.ibm.com

IBM Rational Software Development Conference UK 2007



What keeps me **Rational**?



Agenda

- Transforming enterprise application interfaces with Host Access Transformation Services (HATS) – 15 mins
- HATS Demo – 15 mins
- Integrate existing mainframe applications with SOA with WebSphere Developer for System z (WDz)
- WDz Demo
- Q&A



Transform

Building new SOA components and reusing core applications

IBM Rational Software Development Conference UK 2007



What keeps me **Rational**?



The Reality of Legacy Applications

- 200 billion lines of COBOL code exist today
 - ▶ 5 billion lines are added each year
 - ▶ Similar inventory of RPG and PL/I code
- The typical mainframe customer has:
 - ▶ 30M lines of COBOL code
 - ▶ Worth \$600M
 - ▶ Automating 100,000 business processes
- The 250,000 iSeries customers also have inventories of RPG code



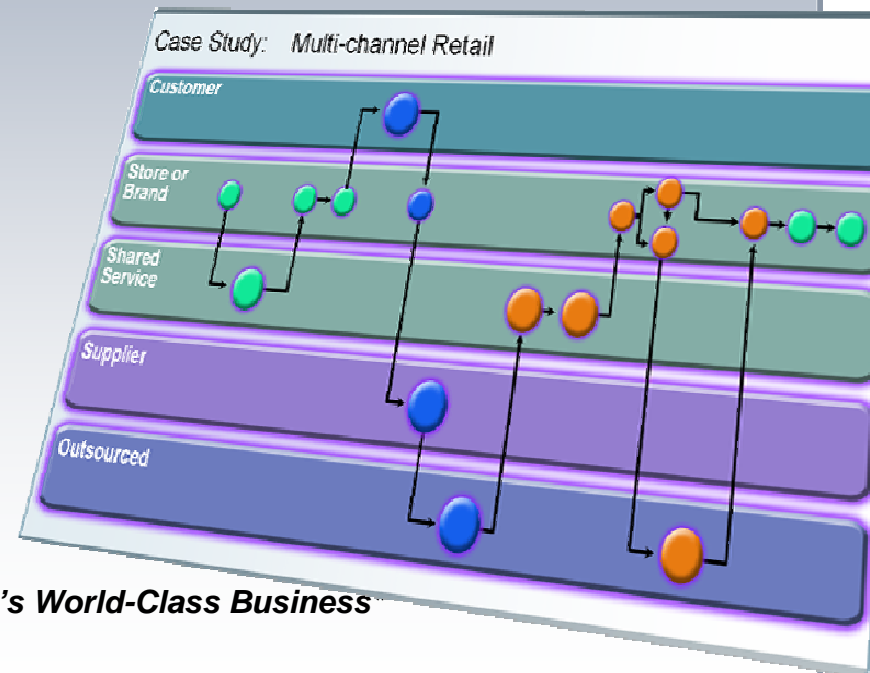
Consultants estimate it costs 5 times more to rewrite a business function than to reuse existing code



Application Transformation enables SOA flexibility and reuse

- **Economics:** globalization demands flexibility
- **Business processes:** changing quickly and sometimes outsourced
- **Reusable assets:** can cut costs
- **Growth:** at the top of the CEO agenda
- **Information:** greater availability
- **Crucial for flexibility and becoming an On Demand Business**

*Traditional Business**



Today's World-Class Business

*Sources: CBDi

The Key Issue to Focus On is **Responsiveness** and the ability of IT infrastructure to respond quickly

75% of CEOs place a high or very high priority on the **ability to respond rapidly**

Only one in ten CEOs believe that their organisation has the ability to be very responsive to react to changing market conditions

CEOs recognise the need to establish effective, real-time response capabilities

The rationalisation and **alignment of disparate applications and infrastructure** are the key issues



Source: IBM Global CEO Survey, Feb 2004

“...implementing **an efficient, flexible, secure infrastructure** remains high on the priority list for the CIOs surveyed.”

“Some Integration Vendors Outperform the Slow Software Market”

J. Thompson, J. Correia, M. Pezzini, Gartner, Sept. 16, 2004



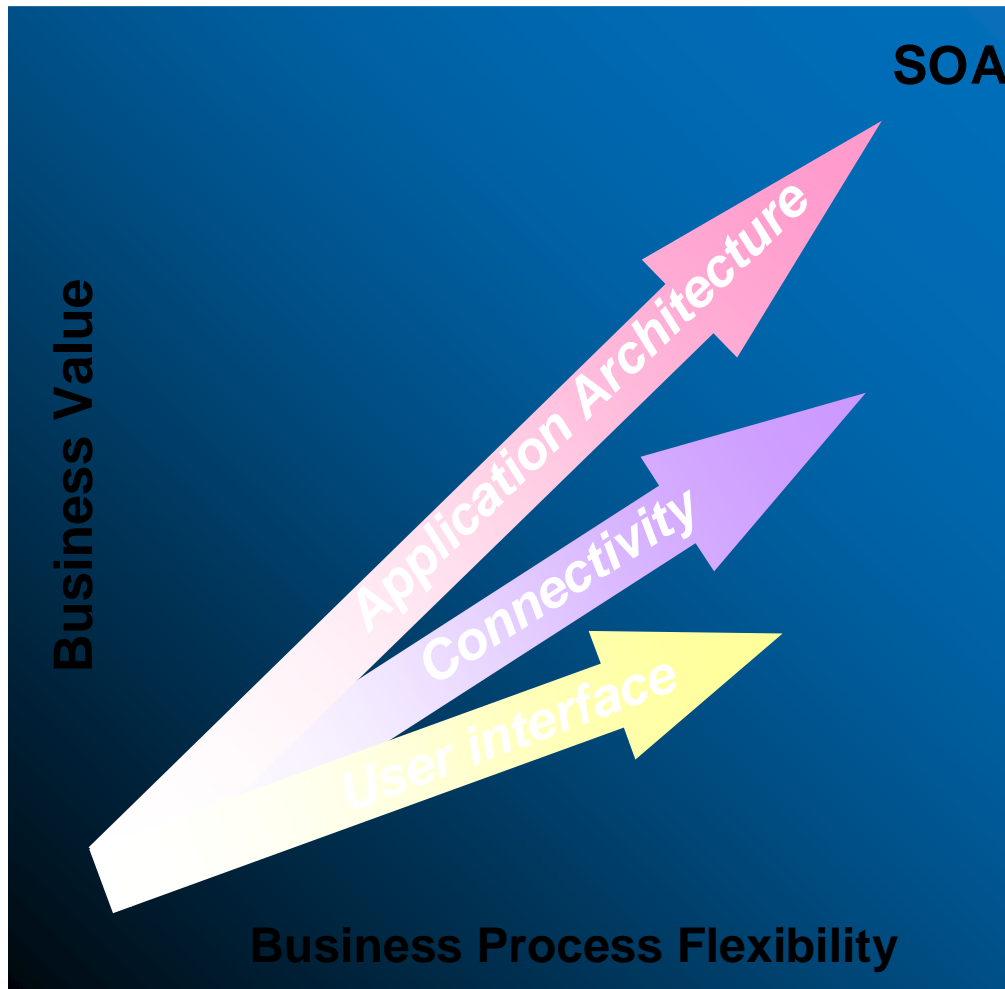
What keeps me **Rational**?

ZI4: Modernising Your UIs and IDEs

What is Enterprise Transformation?



Three styles of transformation



Transform Application Architecture for greater flexibility.
Update and extend mission-critical applications as services, leveraging their core value in new ways.

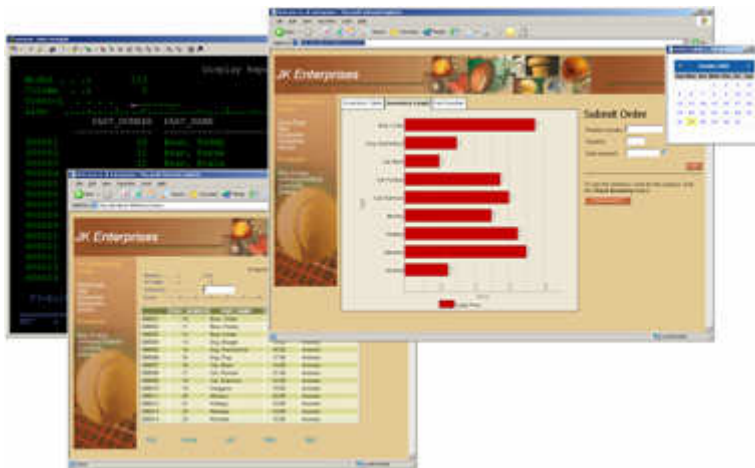
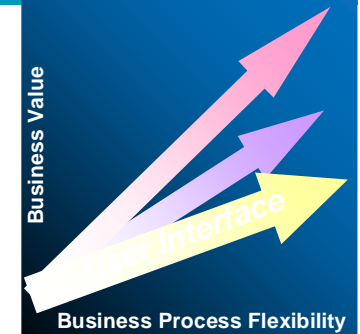
Extending Core Applications into Web Application Infrastructure.
Develop new connectivity to improve customer, partner and supplier relationships

Modernise the user interface.
Quick ROI.

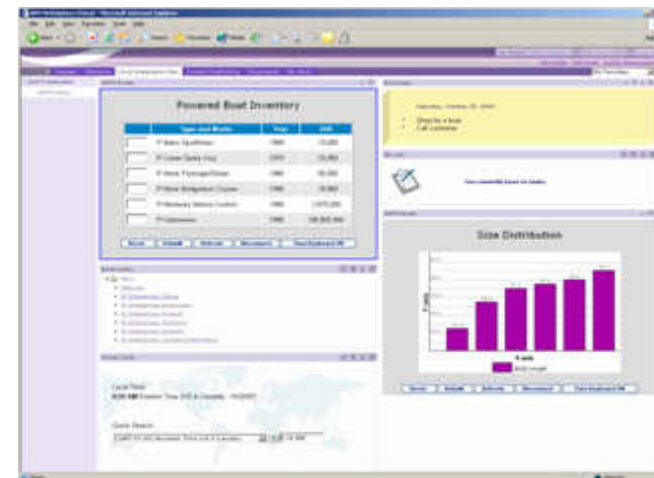


Modernise the user interface

- Increase productivity and reduce training costs by improving the user experience
- Extend existing applications to new users, such as business partners, suppliers and customers
- Integrate traditional applications into enterprise portals to provide users with a single, personalised point of access
- Reduce development costs by avoiding rewrite of core applications



Improved user interface and workflow



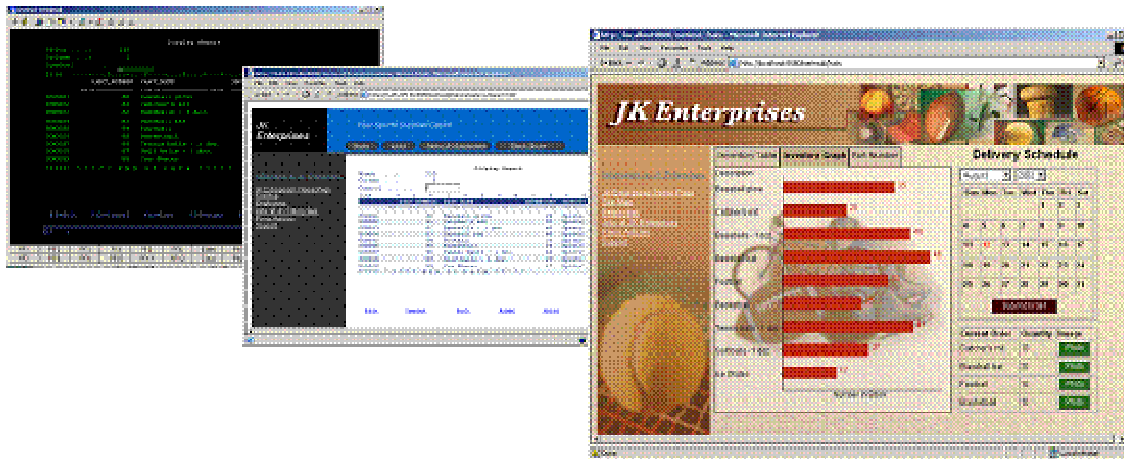
Integration with WebSphere Portal



WebSphere Host Access Transformation Services (HATS)

Easily extend existing applications to the widest possible audience

- A Web-to-host HTML emulator...
- with a rules-based transformation engine, that...
- converts green screens to graphical user interfaces, Web services, and portals and...
- improves the navigation and ease-of-use of host applications.

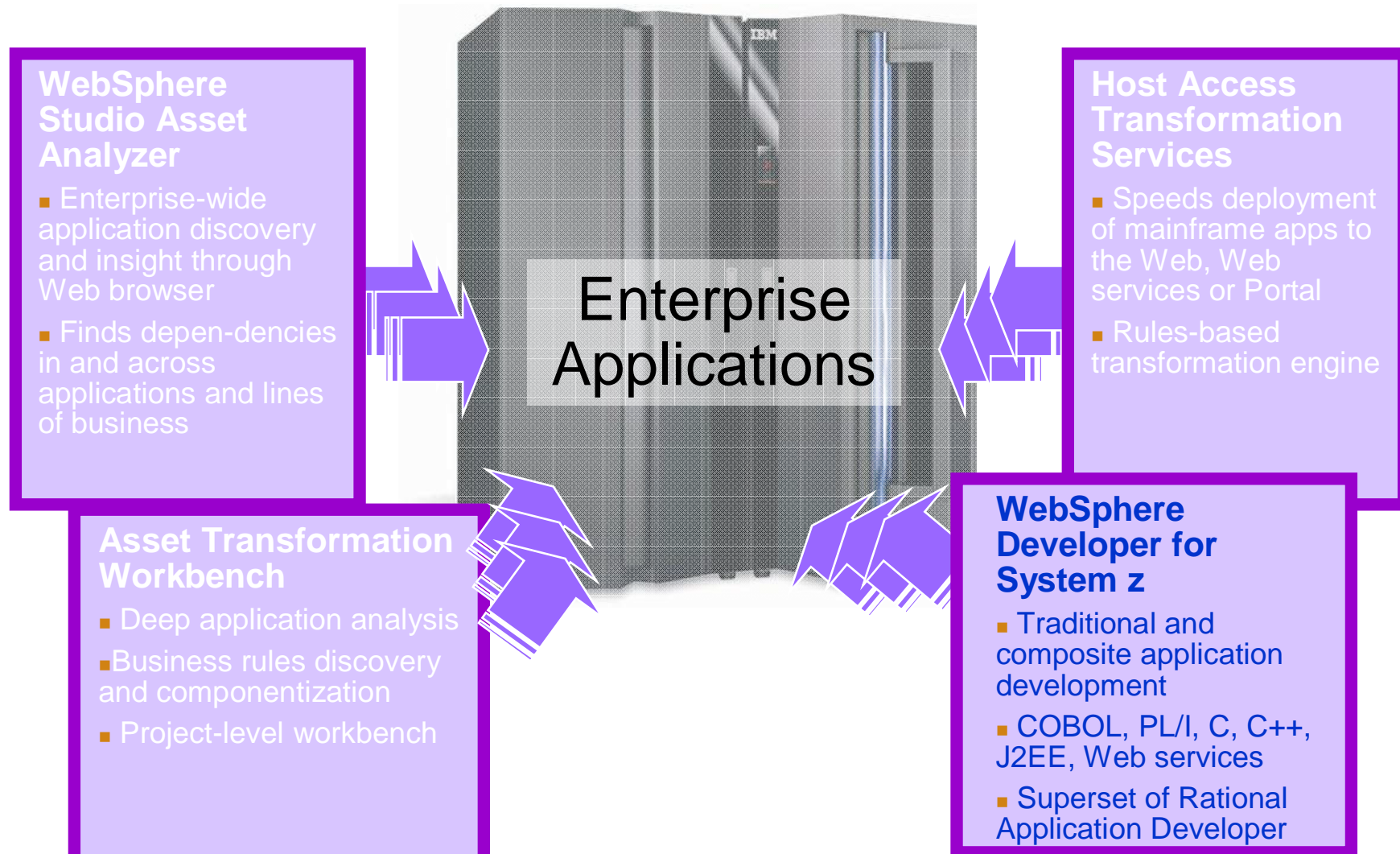


- *Default rules and on-the-fly screen transformation allow 3270 and 5250 applications to be deployed to the Web within hours of loading the software*

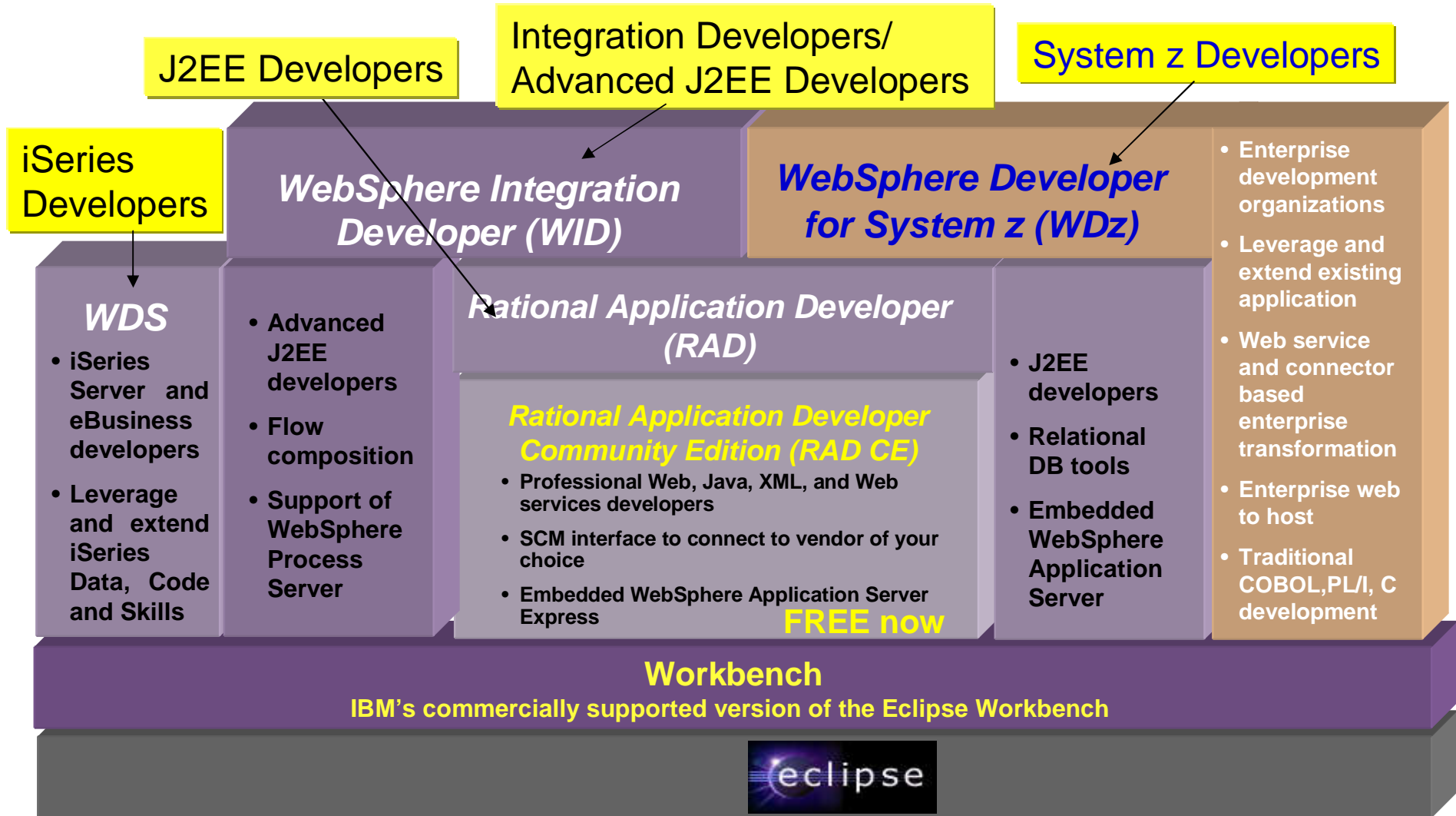




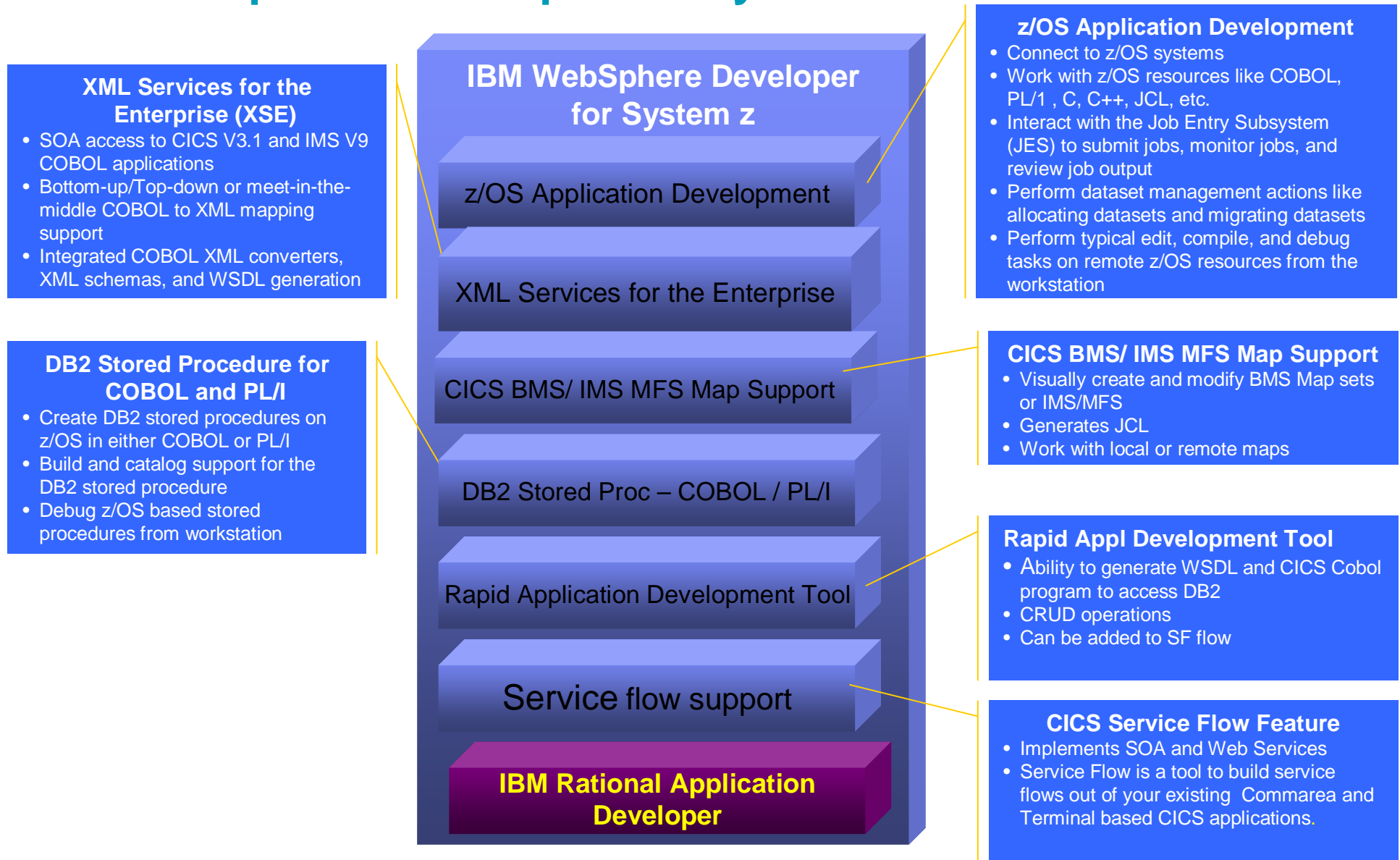
System z AD Transformation Tools



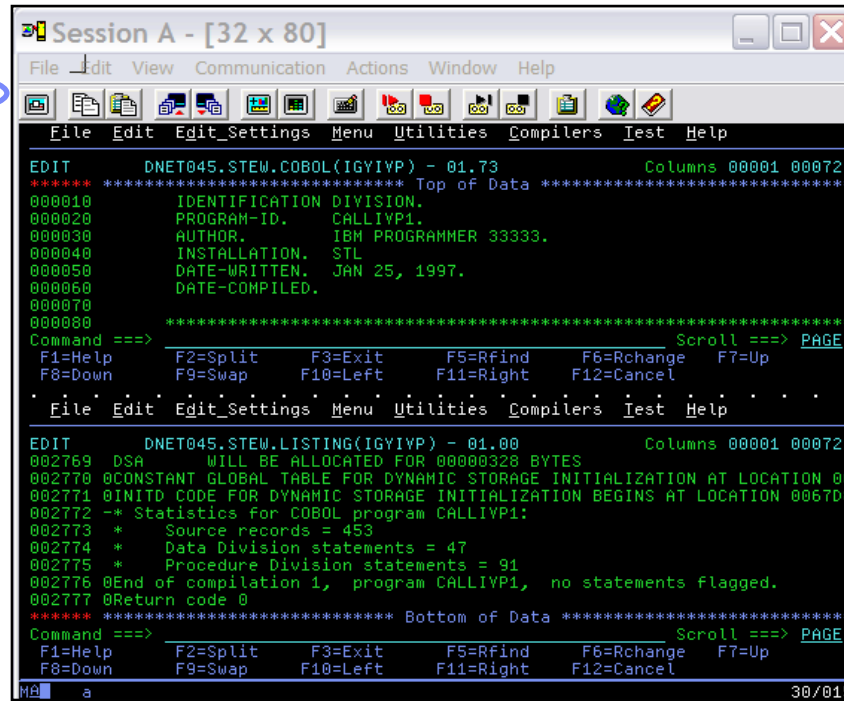
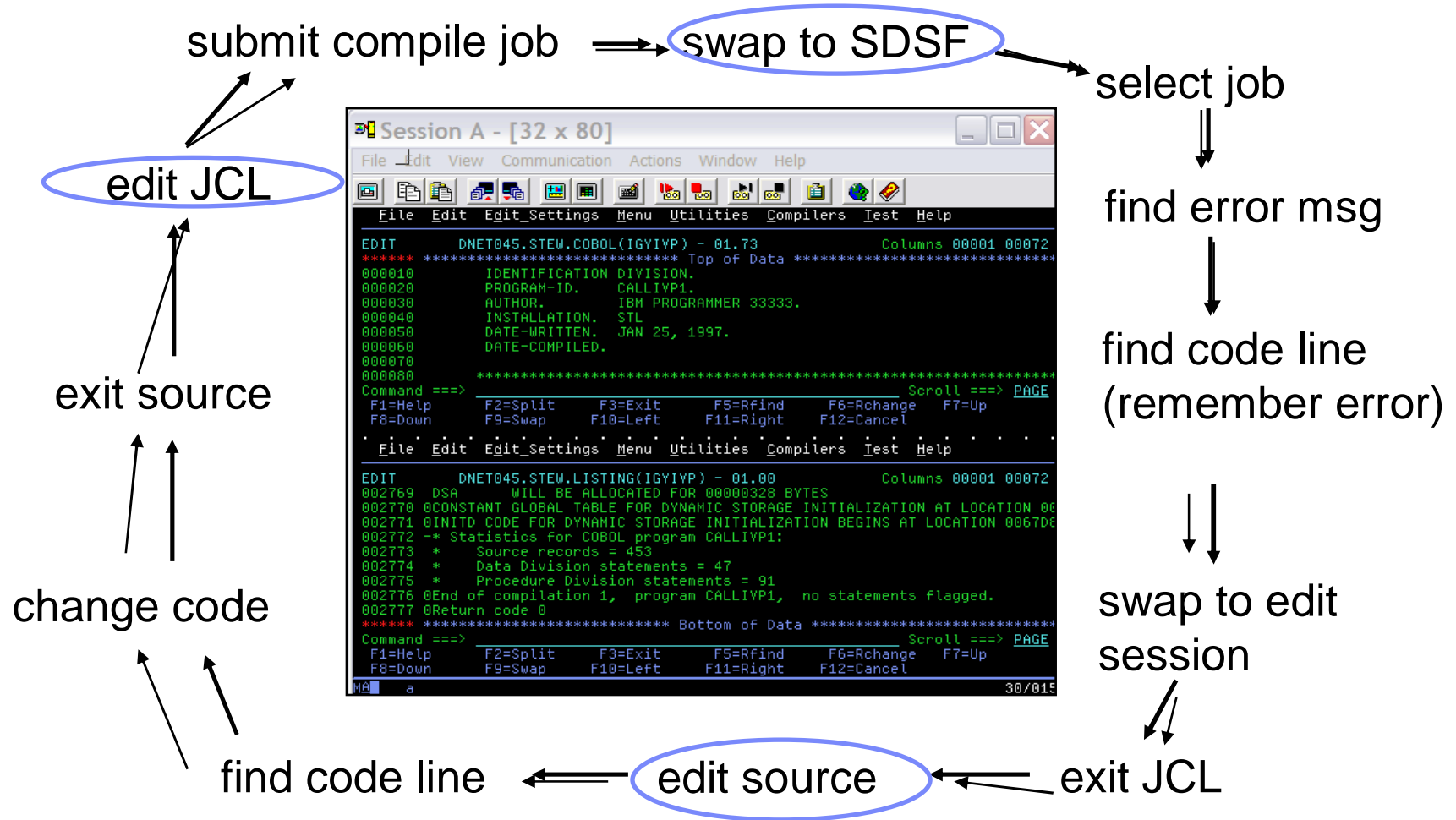
Rational Development Family (V7)



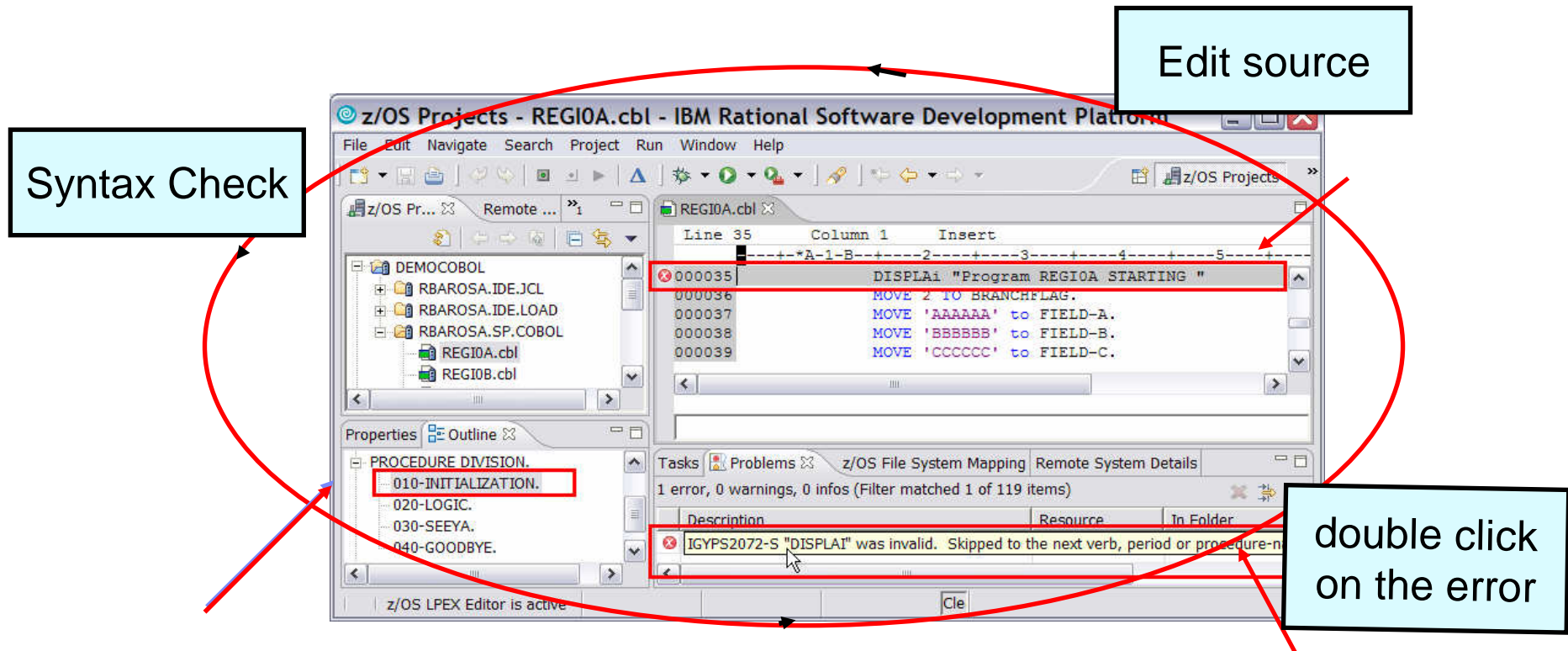
IBM WebSphere Developer for System z



ISPF based Development

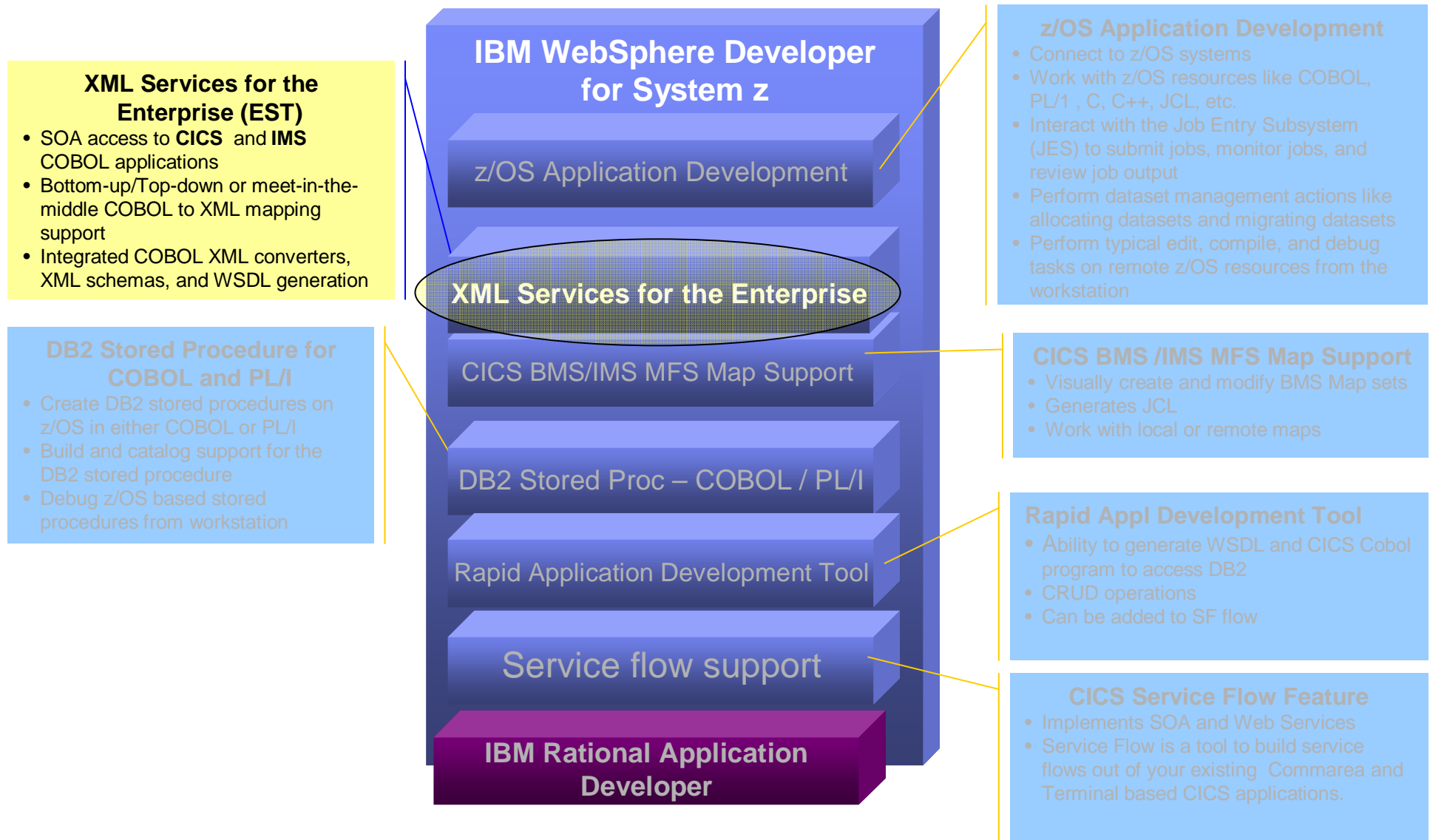


Eclipse, WebSphere based Development

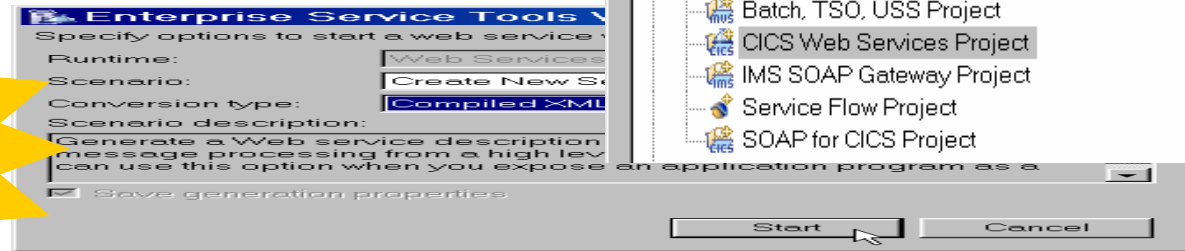
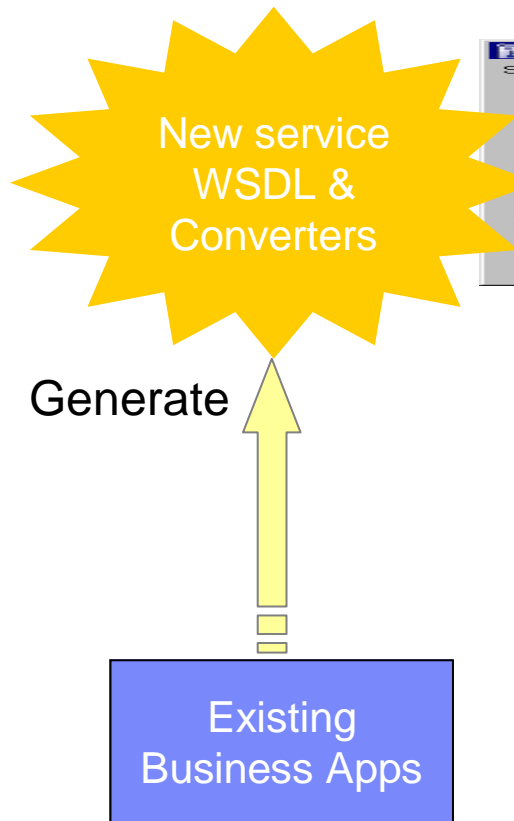


Benefit: Simplified development for COBOL, PL/I, C and C++ on a common development environment

IBM WebSphere Developer for System z



XML Services for the Enterprise (XSE) Example Bottom-up



Bottom-up

Testing CICS Web Services using WDz

The screenshot illustrates the process of testing a CICS web service using the Web Services Explorer (WSE) in the IBM Rational IDE. The project tree on the left shows a project named 'EOT_3_LOCAL_Create_services' containing several files, including 'CUSTINQ.wSDL'. A context menu is open over 'CUSTINQ.wSDL', with the 'Web Services(H)' option selected, and the 'Test with Web Services Explorer' sub-option highlighted. A blue arrow points from this menu item to the test interface on the right. The test interface shows the URL 'http://demomvs.demopkg.ibm.com:3091/CUSTINQ4' and a 'DFHCOMMAREA' section with a 'CustNo' input field containing the value '6'. Below the input field, the 'Status' section displays the test results for 'DFHCOMMAREA', including 'CustNo (int): 6', 'LastName (string): Barosa', 'FirstName (string): Thiago', 'Address1 (string): 7 Sao Benedito', 'City (string): Sao Paulo', and 'State (string): SP'. A red box highlights the 'Status' section.



Scenario: Support for Mixed Workload

WDz:

Brings the power of J2EE, rapid Application Development, and robust team support to diverse enterprise IT organizations

Consists of:

- An intuitive, visual construction based on open standards (Java Server Faces)

- Broad SOA support through Web Services and JCA with specialized zSeries capabilities

- An easy to learn, language neutral environment for rapid application development

- Comprehensive state-of-the-art facilities for developing, debugging and deploying

- Java, COBOL, PL/I and C/C++ applications and services

Benefits:

- Increase developer productivity

- Leverage existing processing

- Integrate with lifecycle

- Extend skill sets across the organization



For additional information

- WebSphere Host Access Transformation Services
ibm.com/software/webservers/hats
- Live Host Integration Demos
websphere.dfw.ibm.com/whidemo
- WebSphere Developer for zSeries
ibm.com/software/awdtools/devzseries/
- WebSphere Asset Transformation Workbench
ibm.com/software/awdtools/atw/
- WebSphere Studio Asset Analyzer
ibm.com/software/awdtools/wsa/





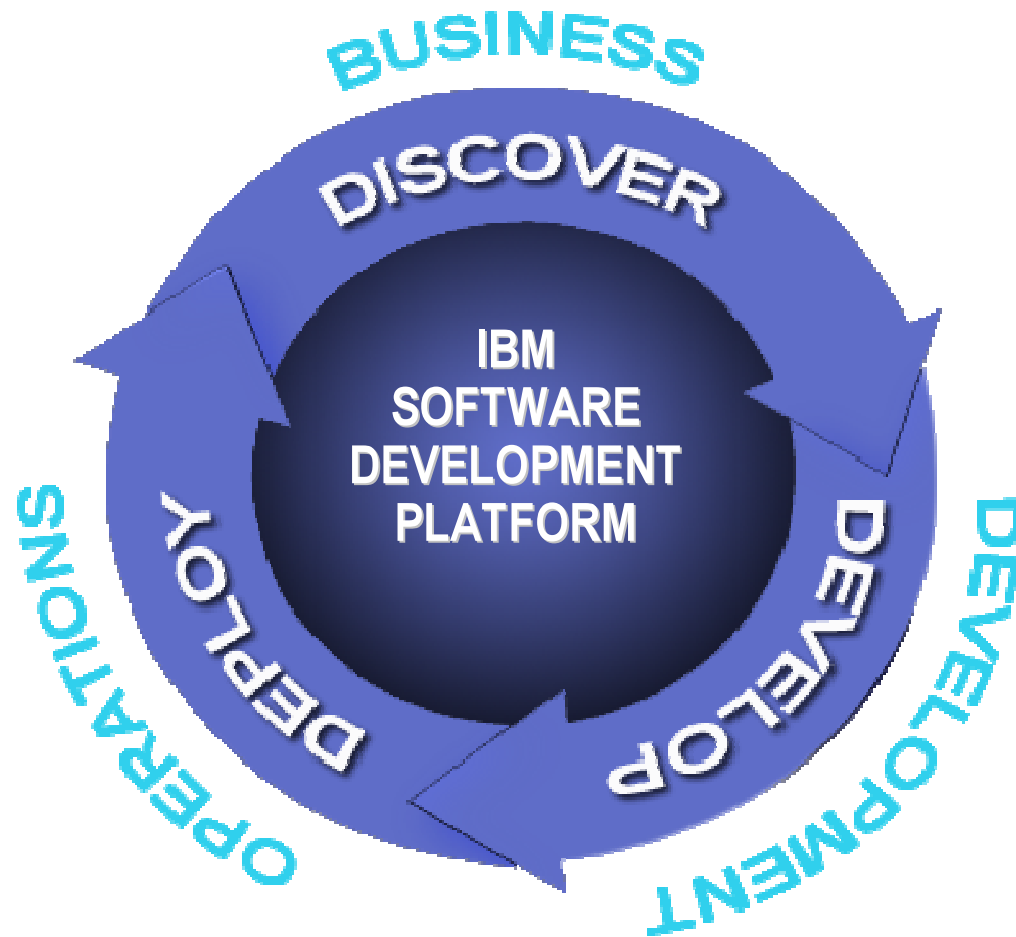


Thank You

Backup



Business-driven development



How to use this template

- To allow all masters of your presentation to be updated correctly, download this template to your hard drive and copy your existing slides into the new template
- See slide notes for further formatting instructions

