

Introducing IBM Rational Team Concert, powered by Jazz technology

Derek F Holt (WW Architecture Management/Team Concert SME)
Robin Bater (Architecture Management WW CoP Lead)

IBM Rational Software Development Conference UK 2007



▶ What keeps me **Rational**?



Disclaimer

- Though this represents our current direction, these plans are subject to change
- Nothing in this presentation is intended to create any representations or warranties
- IBM Rational warranties are contained in the applicable license agreements



What is Jazz?

Innovation

A major investment by IBM to create a scalable, extensible team collaboration platform for seamlessly integrating tasks across the software lifecycle

Tooling the Eclipse Way

A commercial project led by the IBM team that brought you the Eclipse Platform, tooling the agile practices of this proven open collaborative model



Community

Jazz.net – Jazz project venue for open commercial development of Jazz platform and Jazz-based products and an extension of the world wide Eclipse ecosystem



Vision

A vision for the value and experience that future Rational products can bring to software and systems delivery teams



How is the Thinking Behind Jazz Different?

Desktop Integration → Lifecycle Integration

Eclipse established a desktop client integration model for individuals, Jazz will establish a similar integration model across the lifecycle of software projects

Function First → Team First

Jazz will challenge us to think first about how people work together and then about the tool function needed by individual practitioners for specific roles



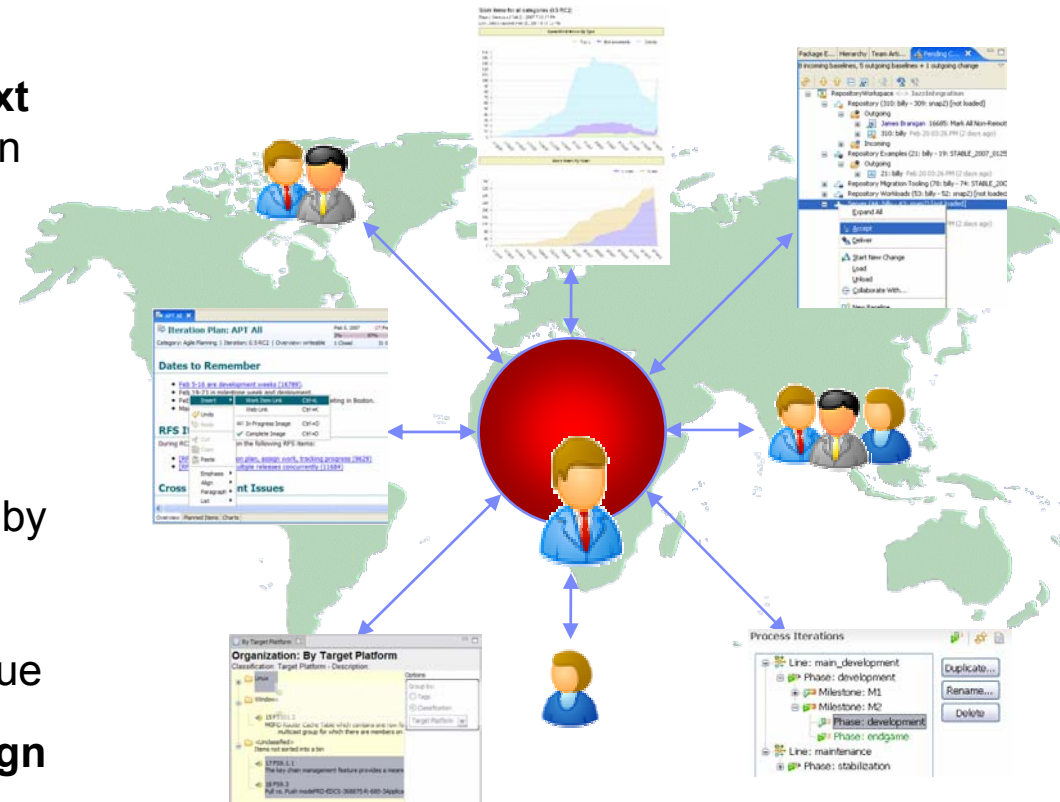
Manual → Process Aware & Transparent

Focuses on automating the unique dynamic of a team enhancing productivity by enabling real-time collaboration, visibility and transparency across the team, and process enactment



What Does Jazz Do?

- ★ Enables development teams to **collaborate in real time in the context** of the work they are doing, especially in globally diverse environments
- ★ Enables projects to be managed more effectively by providing visibility into **accurate project health information** drawn directly from actual work
- ★ Automates traceability and auditability by **managing artifacts and their inter-relationships** across the lifecycle empowering teams to deliver more value
- ★ Provides **customizable process design and enactment** through rule-based process guidance, automation and definable checkpoints
- ★ Provides an **extensible technology platform** for building products & adapters



Delivering greater openness & customer participation in the products they depend on for software delivery

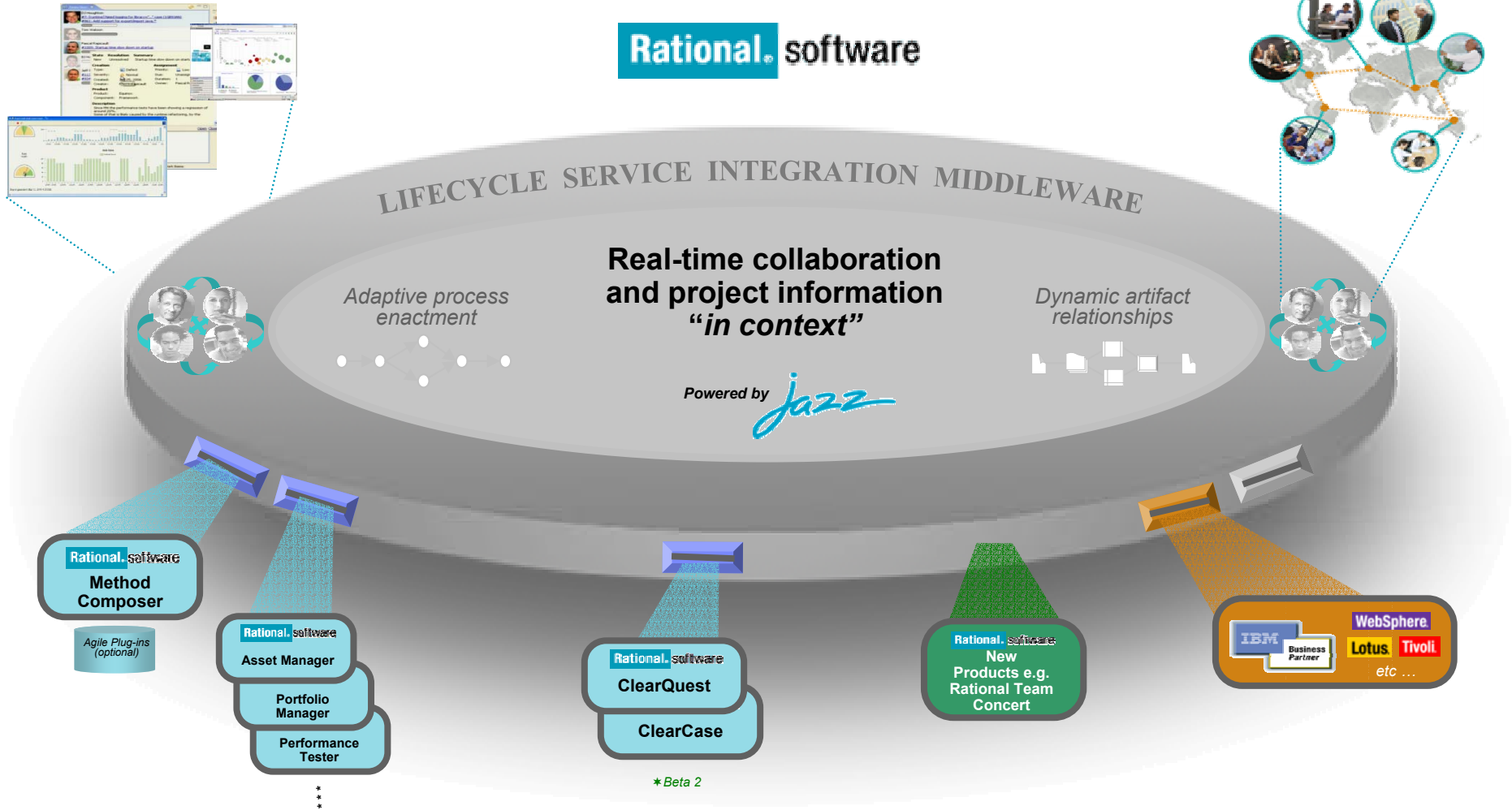
- IBM is opening up the Rational Software Delivery Platform for greater ease of consumption, extensibility and integration to meet the unique usage needs of our customers
- IBM is providing transparent, collaborative customer participation in the development of new Rational technologies through an open commercial community



Jazz: Enabling innovation in the Rational Software Delivery Platform

Secure Eclipse & Web 2.0 clients

Globally distributed projects



What keeps me Rational?

CRM1: Introducing Rational Team Concert powered by Jazz Technology

IBM Rational Team Concert

*Introducing the first of a stream of beta releases of a new Rational offering powered by **Jazz** ...*

- A real-time collaborative portal improving software delivery team innovation & productivity
 - Complements Rational ClearCase & ClearQuest
- A flexible, low footprint application lifecycle management offering optimized for Agile development teams in midsized & large businesses
- A middleware foundation based on a services oriented architecture (SOA) providing flexible lifecycle service integration & adaptive process enactment in the IBM Rational Software Delivery platform



What is the motivation for Team Concert ?

- Enable flexible, agile application lifecycle management
- Low administrative footprint optimized for agile teams in SMB & large businesses
- Provide real-time collaborative environment for software delivery teams
- Step one in the rollout of “lifecycle service integration” middleware in the Rational SW Delivery Platform

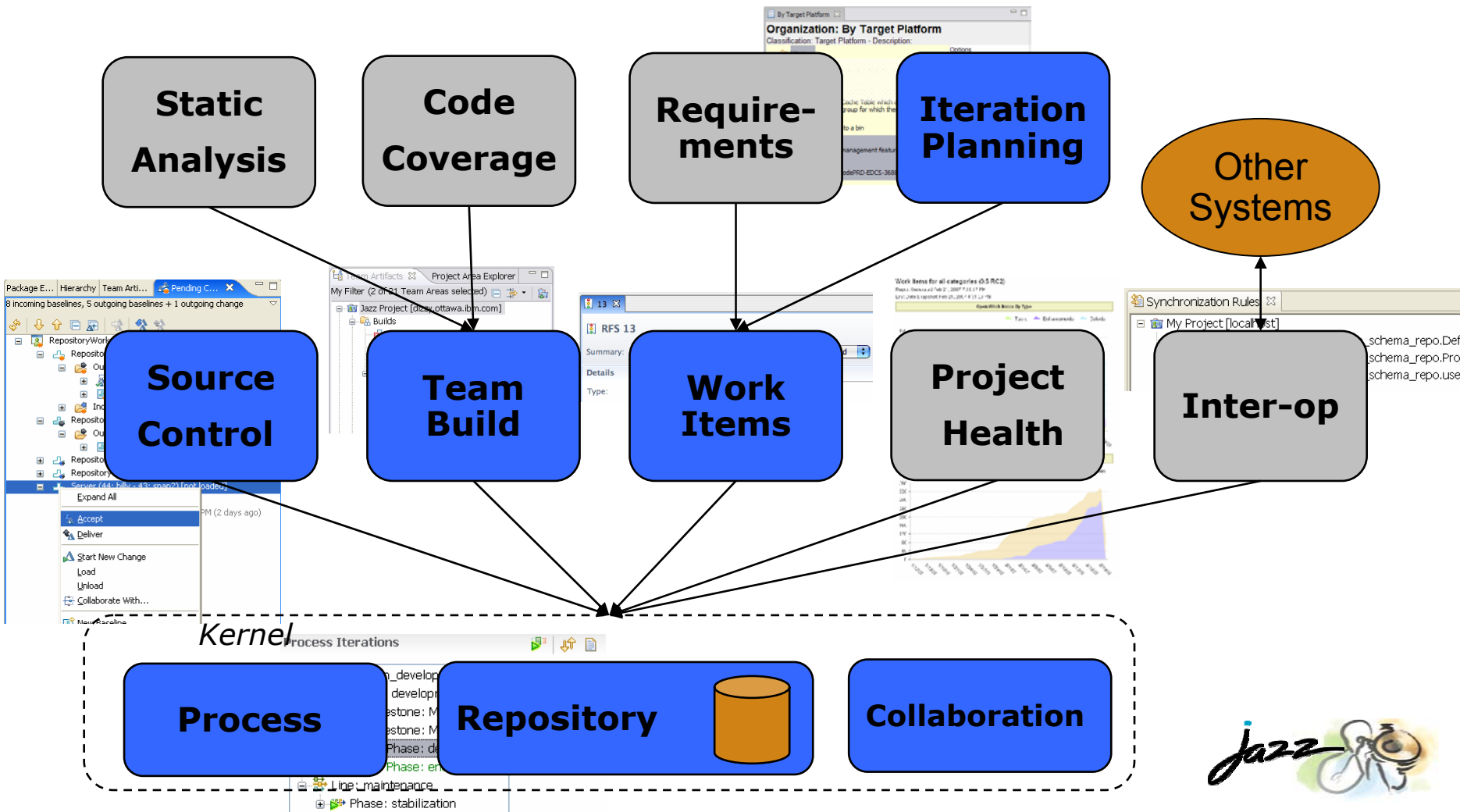


Which constituencies does RTC address?

- Small and medium business: Ideally, Java centric development teams with an affinity for Eclipse based development.
- Small teams in large enterprises who want an agile development process.
- Bringing the Jazz technology to the ClearCase and ClearQuest Customers
- Create innovation and thought leadership for Rational Customers



Jazz Platform components overview



Rational Team Concert (Powered by *jazz*)

Process Automation & Guidance

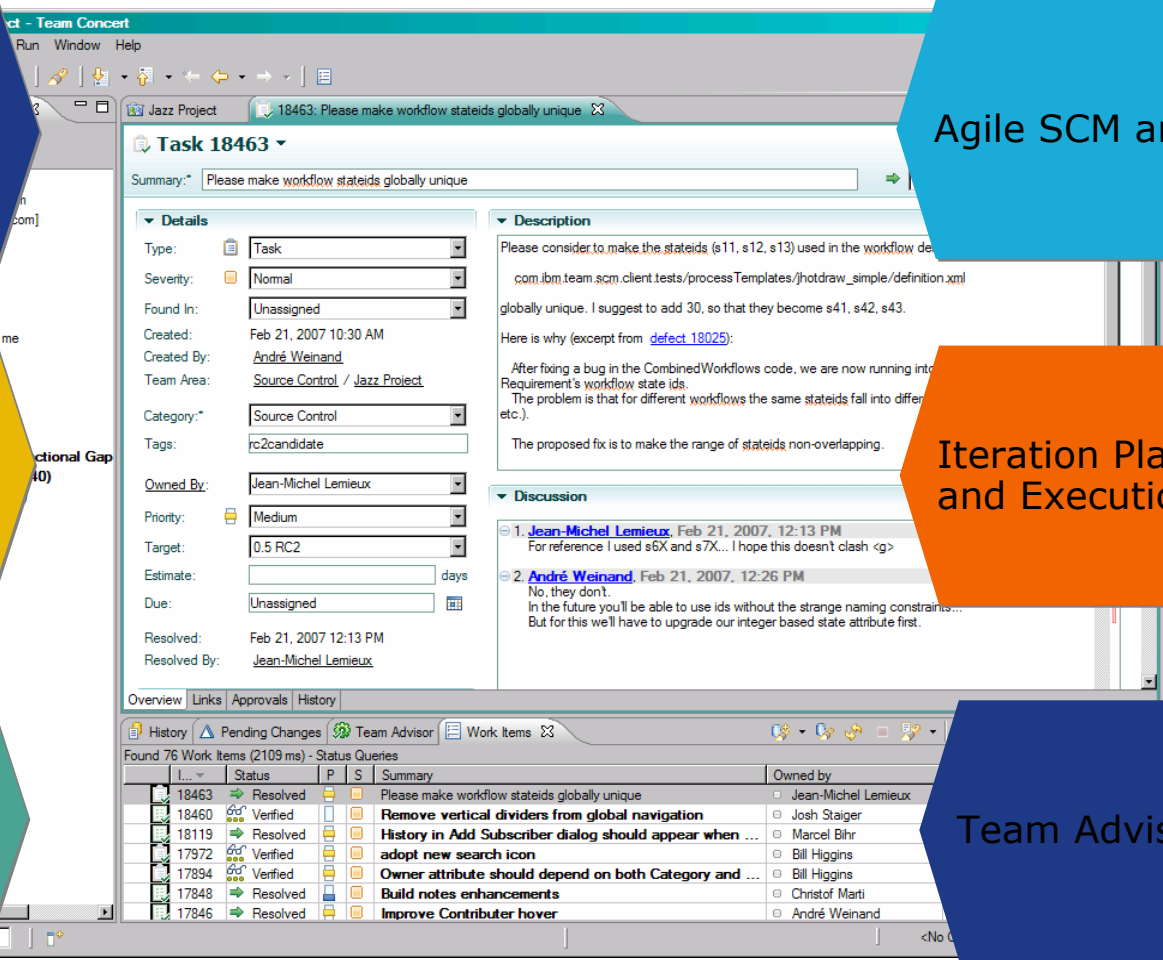
Agile SCM and Build

Team Central
RSS
Personalized

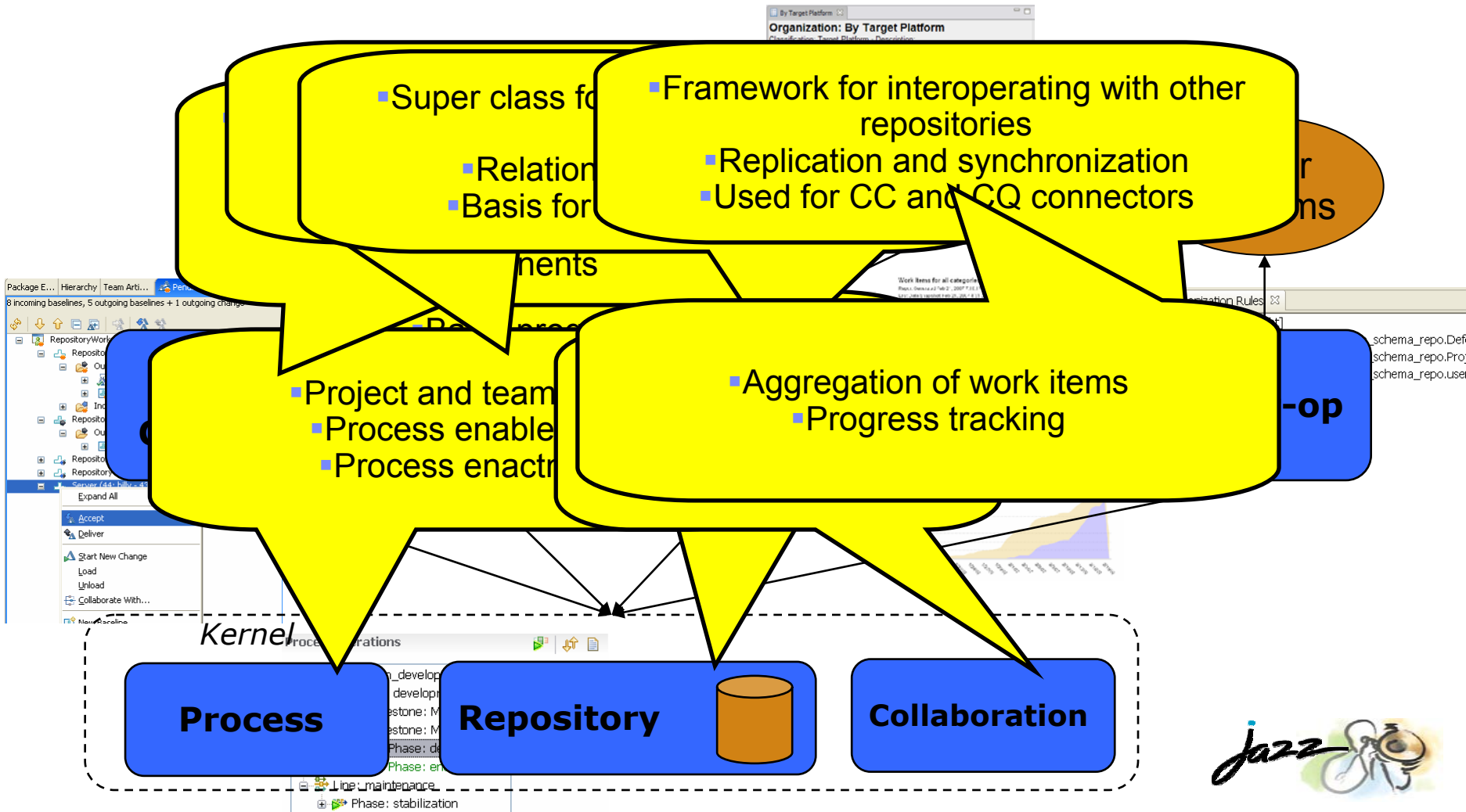
Iteration Planning and Execution

Work Items

Team Advisor



Rational Team Concert



Jazz

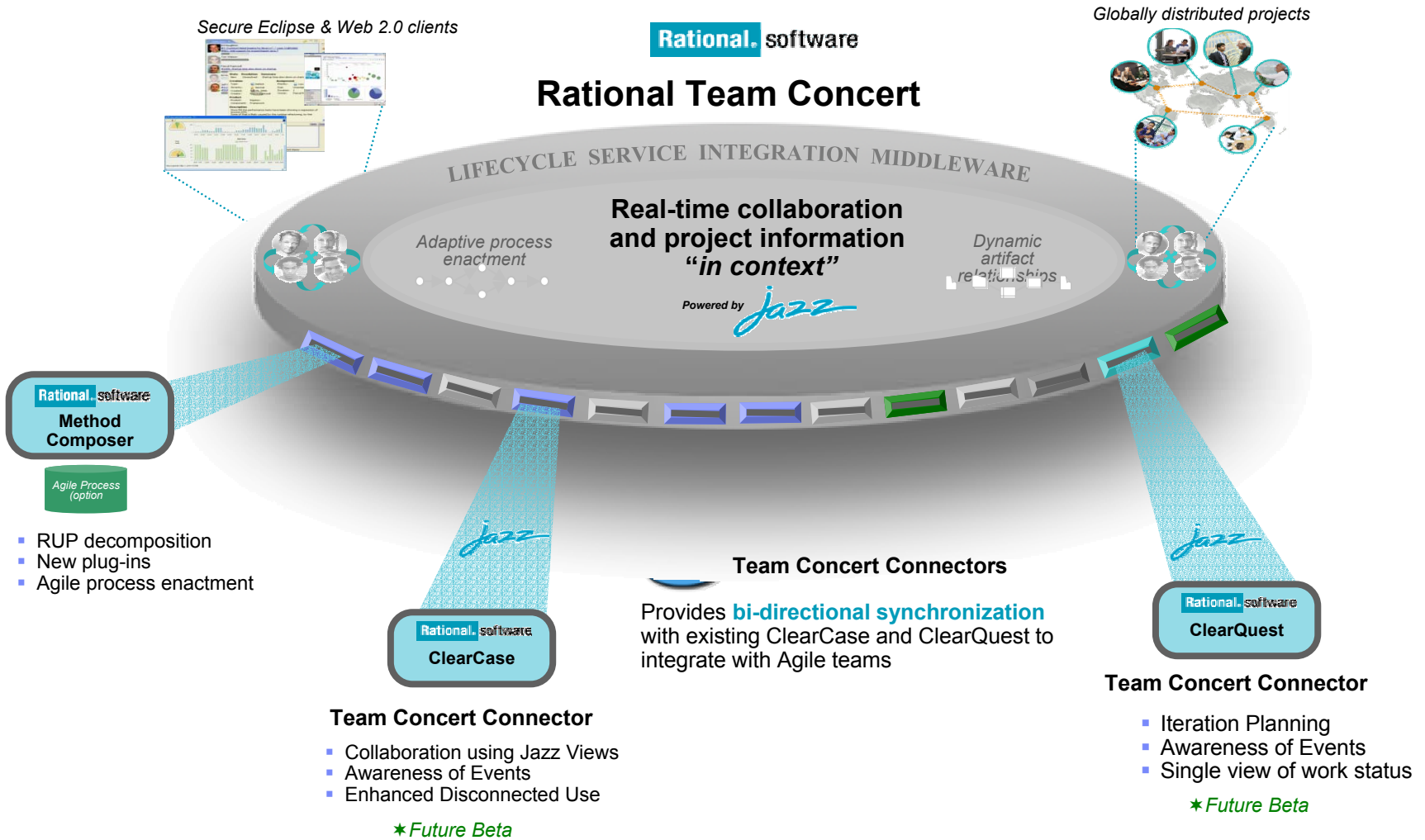
The screenshot displays the IBM Jazz web application interface. At the top, there's a navigation bar with 'Home', 'Reports', 'Work Items', and 'Iteration Plans'. The main content area shows details for 'Task 23596' with a summary: 'Deliver updated icons from artwork request 3106'. The task is categorized as 'Process' with a 'Medium' priority and is assigned to 'Darin Swanson'. A discussion section shows a comment from James Stuckey. On the right, a list of other work items is visible, including '44 minutes ago', '2 hours ago', '1 hour ago', '3 hours ago', '2 hours ago', '4 hours ago', 'Yesterday', '8 hours ago', 'Yesterday', 'Yesterday', '4 hours ago', '3 days ago', '3 days ago', '1 hour ago', '2 days ago', '3 days ago', '3 days ago', '4 hours ago', '4 hours ago', '7 hours ago', '12 hours ago', and 'Yesterday'. The interface includes a sidebar with navigation options like 'New Work Item', 'Recently Viewed', 'My Queries', and 'Shared Queries'. A 'Jazz' logo is prominently displayed in the top left of the application area.

on work items for s

integrated entry in Build System

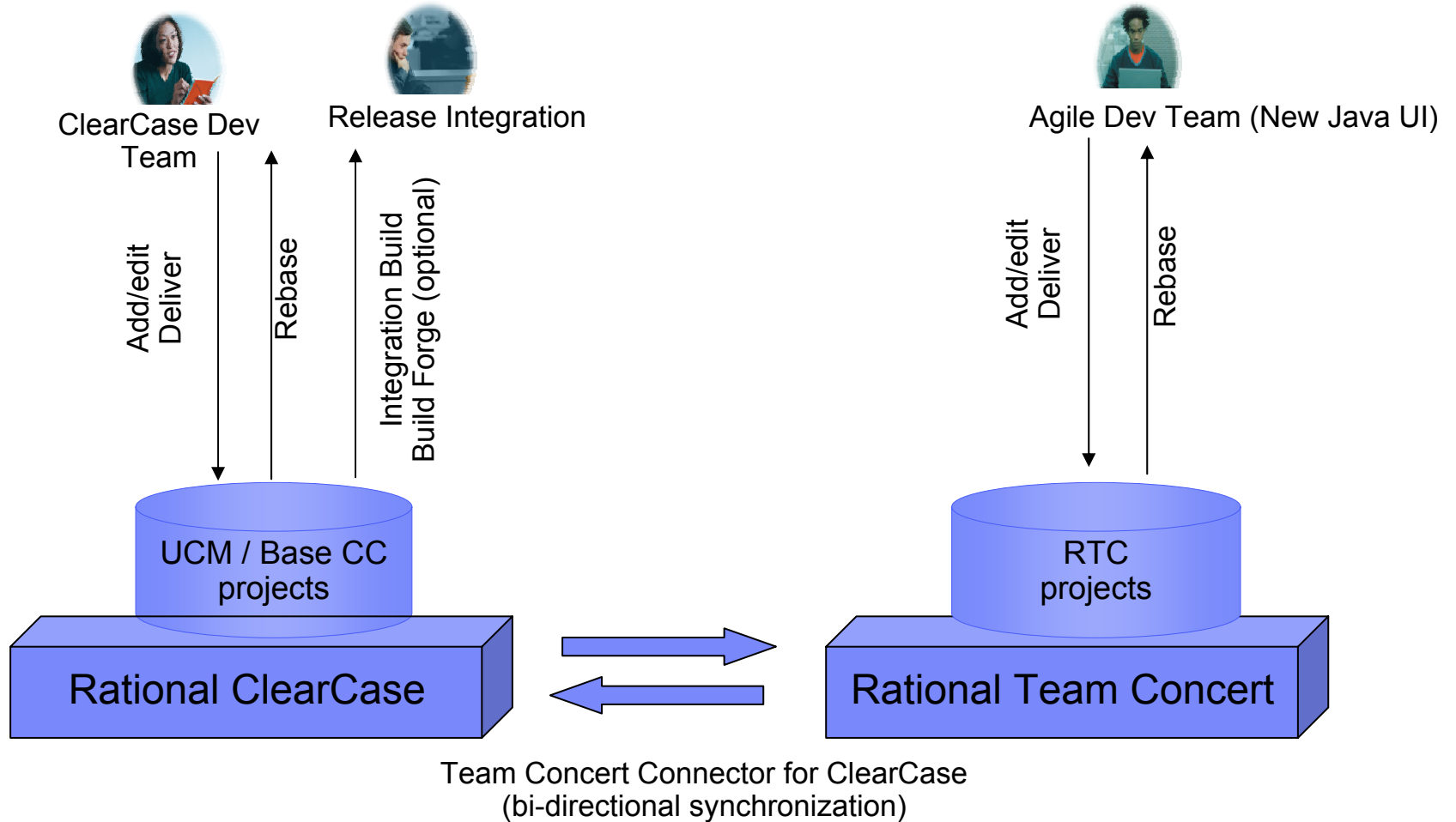
Entactment
WebUI for Work Items

Adding value to Rational ClearCase & ClearQuest



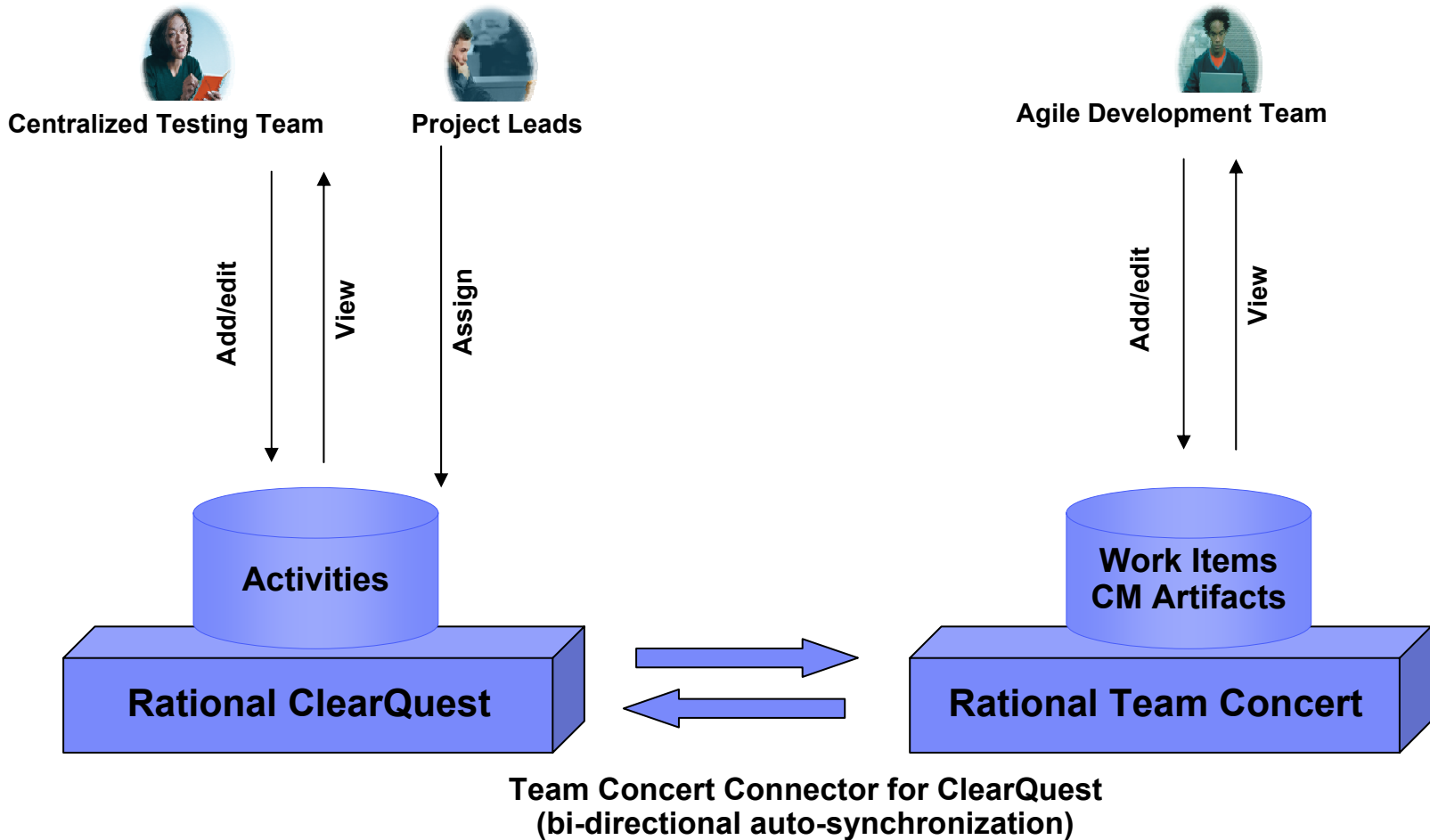
Team Concert Connector for ClearCase

Release integration in CC with mixed CC and Agile dev teams



Team Concert Connector for ClearQuest

Central test team and Agile dev team scenario

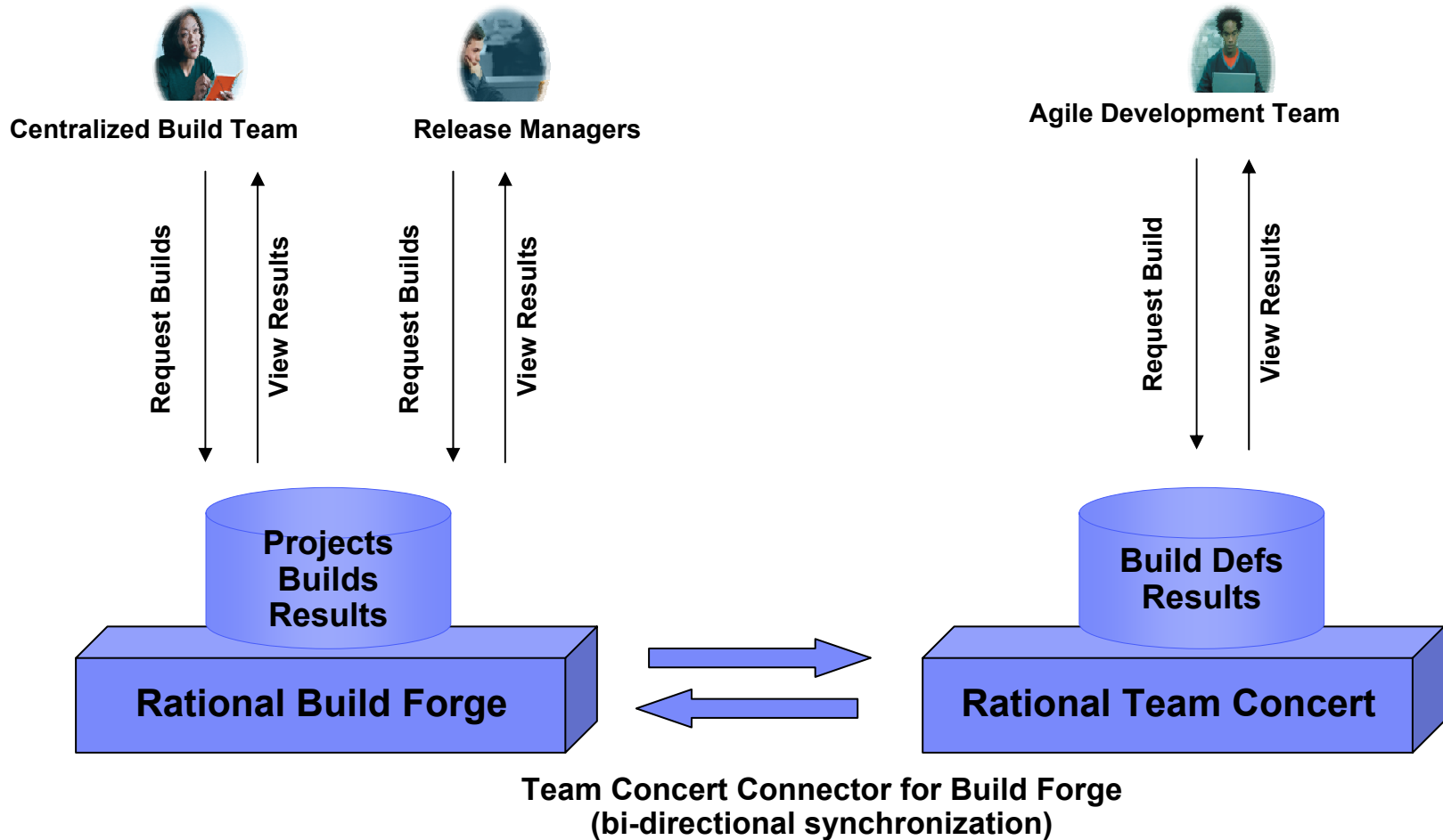


Note: Same scenario is applicable to CQ managed work in both CC and RTC - SCM

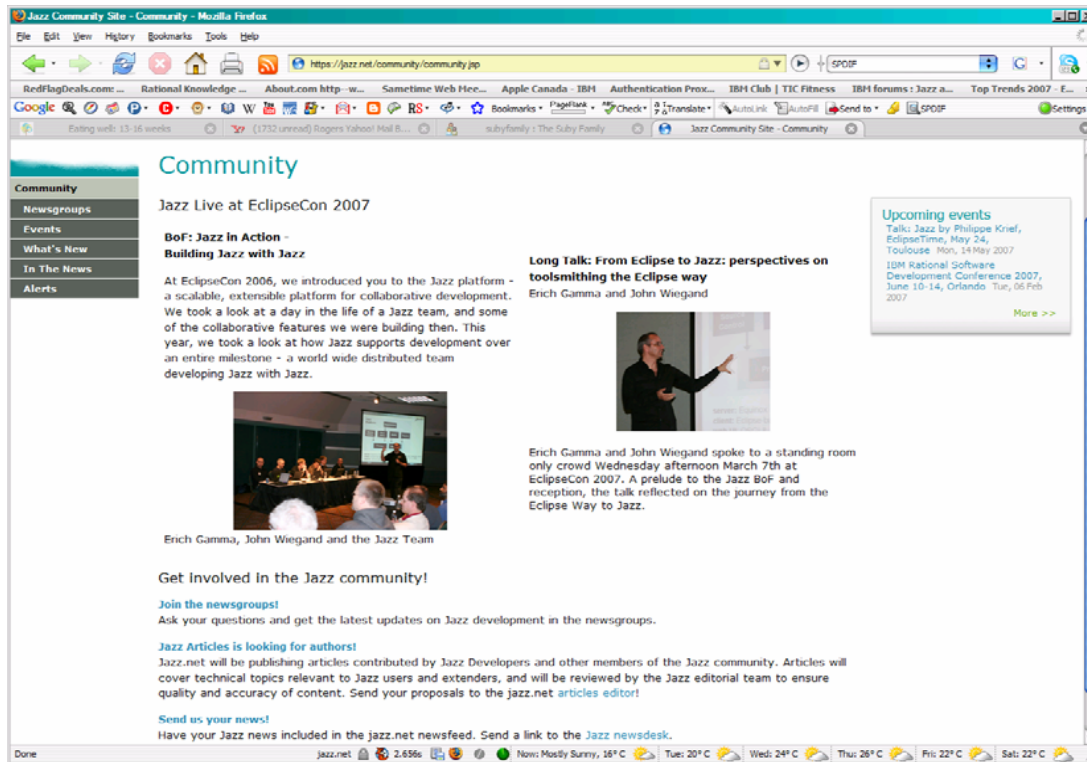


Team Concert Connector for Build Forge

Central release/build team and Agile dev team scenario



Rational Team Concert (Powered by *Jazz*)

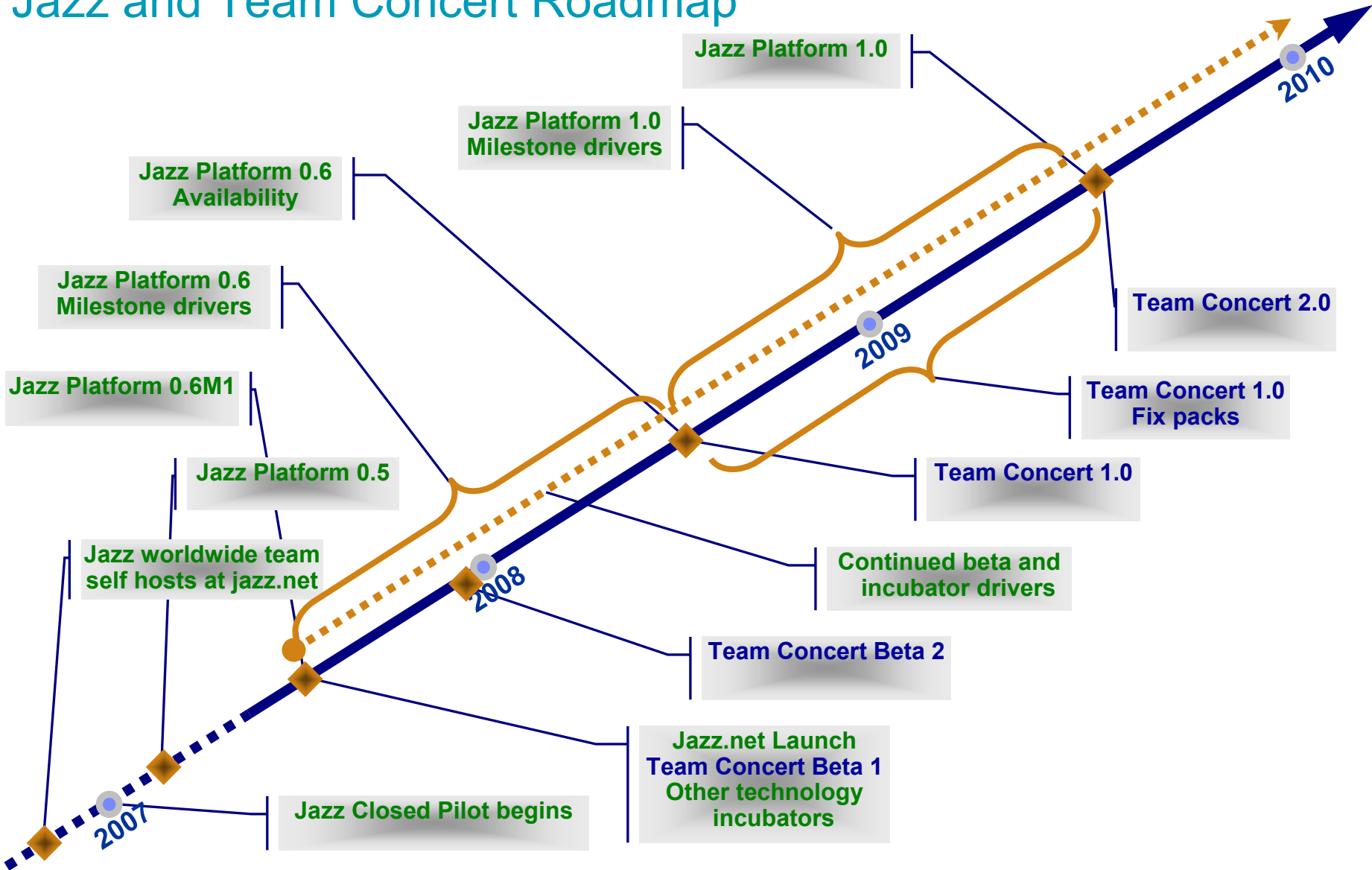


■ Jazz.net Community

- ▶ Open Commercial development
- ▶ Customers can view the progress of the project
- ▶ Engage with developers/support via forums
- ▶ Will be open to evaluating customers
- ▶ Customers who pay for commercially available products (such as RTC) also get telephone support



Jazz and Team Concert Roadmap

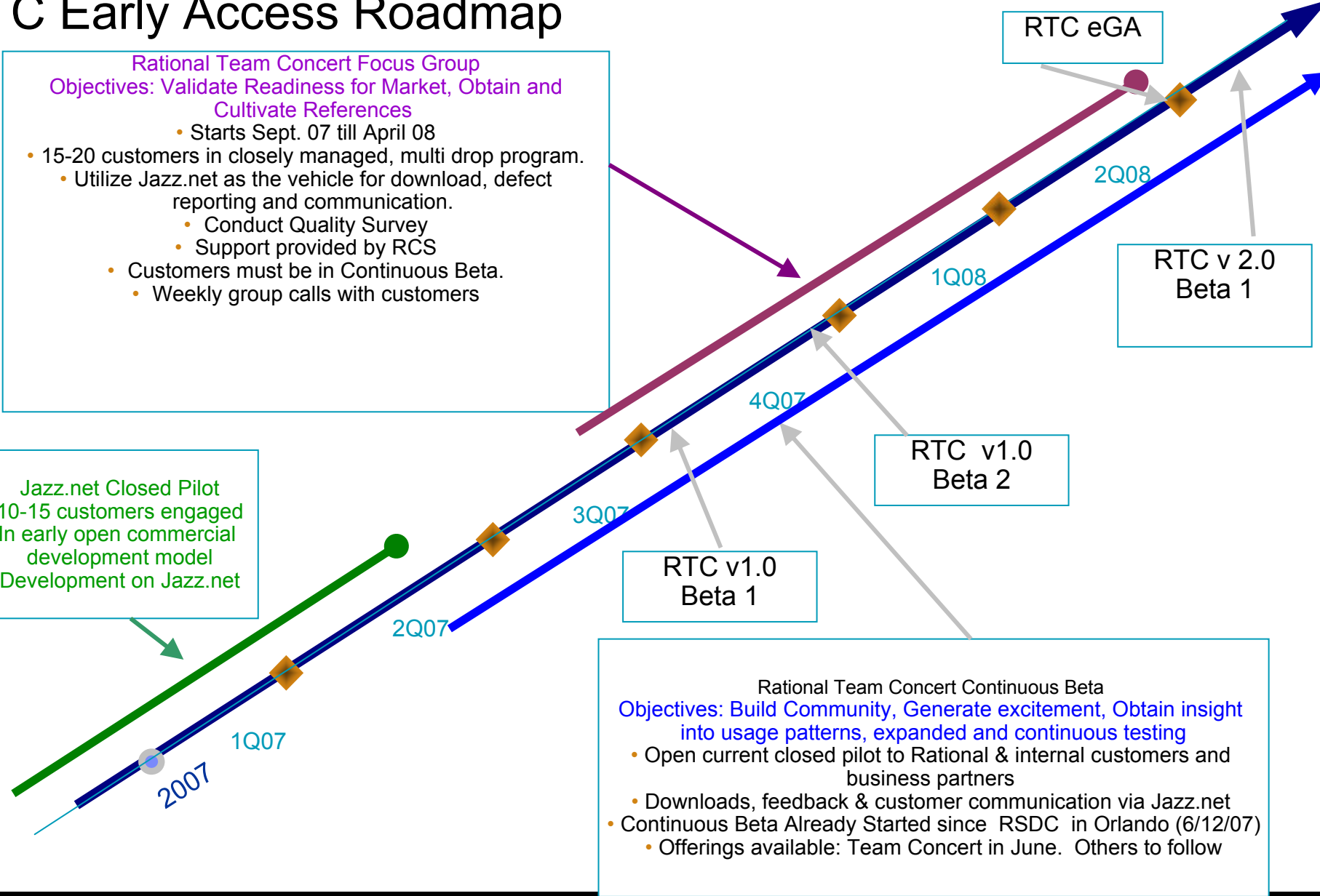


RTC Early Access Roadmap

Rational Team Concert Focus Group
Objectives: Validate Readiness for Market, Obtain and Cultivate References

- Starts Sept. 07 till April 08
- 15-20 customers in closely managed, multi drop program.
 - Utilize Jazz.net as the vehicle for download, defect reporting and communication.
 - Conduct Quality Survey
 - Support provided by RCS
- Customers must be in Continuous Beta.
 - Weekly group calls with customers

Jazz.net Closed Pilot
 10-15 customers engaged
 In early open commercial
 development model
 Development on Jazz.net



Rational Team Concert Continuous Beta
Objectives: Build Community, Generate excitement, Obtain insight into usage patterns, expanded and continuous testing

- Open current closed pilot to Rational & internal customers and business partners
- Downloads, feedback & customer communication via Jazz.net
- Continuous Beta Already Started since RSDC in Orlando (6/12/07)
 - Offerings available: Team Concert in June. Others to follow



Demo





Questions





Thank You

*Derek F Holt
Robin Bater*

