

Blogs	Profile	Activities	Bookmarks	▼
Communities	Wikis	Files		



**Newton, (Matt) Matthew**

Senior Technical Sales Specialist - Lotus Software  
 MANCHESTER Great Britain  
 Building: 0026 |  
 1-720-663-2524  
[matt.newton@uk.ibm.com](mailto:matt.newton@uk.ibm.com)

[Send e-mail](#) | [More Actions](#)

Blogs	Profile	Activities	Bookmarks	▼
Communities	Wikis	Files		



**Crouch, J (Jon)**

Certified IT Specialist (Unified Comms)  
 Great Britain  
 1-720-663-2227  
[jon\\_crouch@uk.ibm.com](mailto:jon_crouch@uk.ibm.com)

[Send e-mail](#) | [More Actions](#)

# Lotus knows.

Smarter software for a Smarter Planet.

Work smarter, keep connected with  
 Lotus Software

**Jon Crouch** | Senior Technical Specialist, Lotus Software  
**Matt Newton** | Senior Technical Specialist, Lotus Software



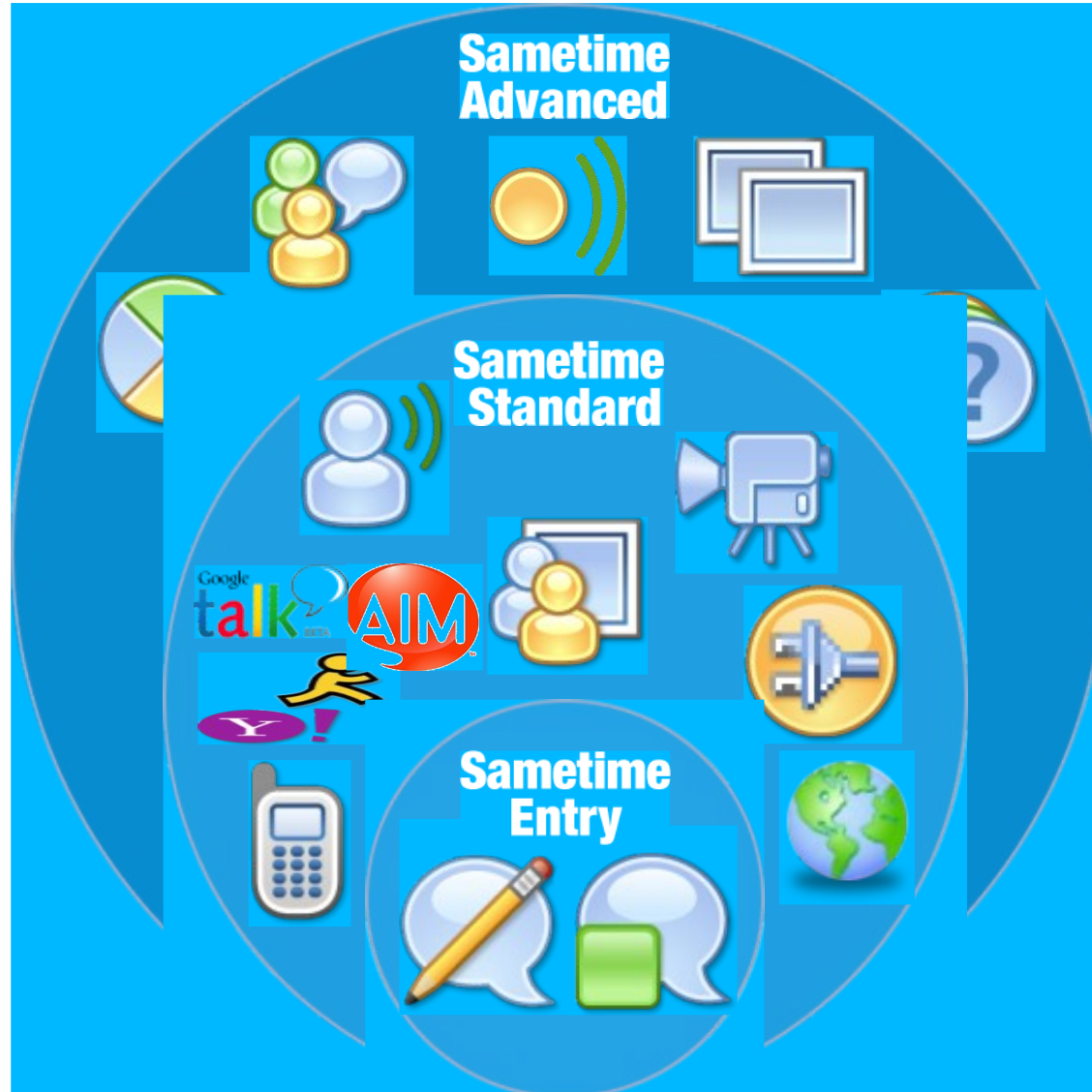
lotusknows.com

# Lotus knows.

Smarter software for a Smarter Planet.

## Sametime Family

## Lotus Sametime Product Family

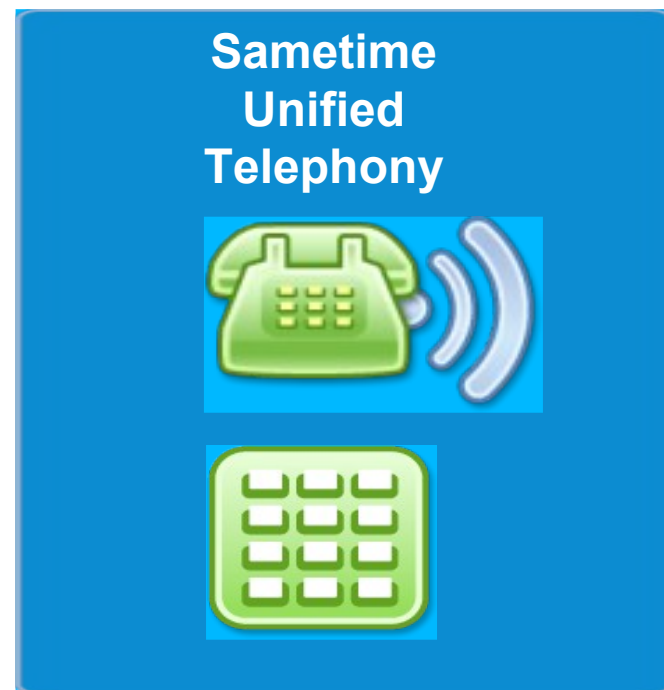
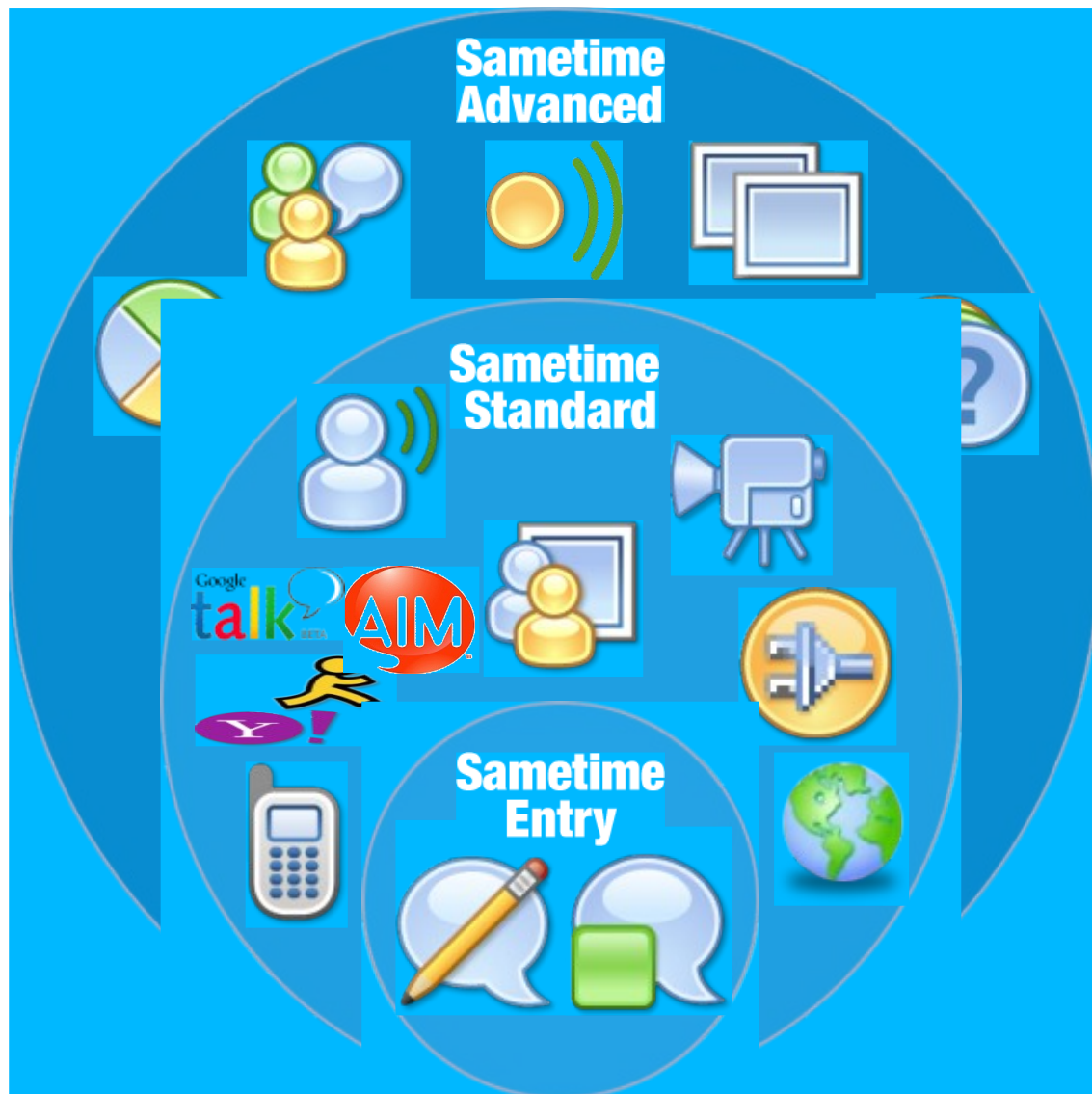


Persistent Chat Rooms  
Real-Time Community Collaboration Tools  
Instant Screen Share  
Location Services

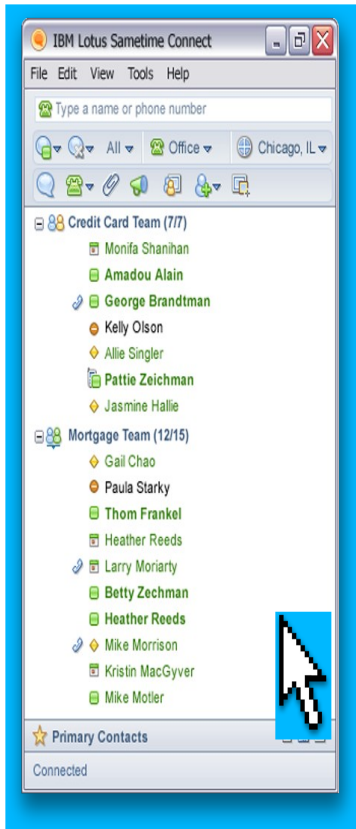
Video, VoIP chat in the enterprise  
Telephony Integration  
File Transfer, Screen Capture  
Web Conferencing  
Mobile Clients  
Supported Public IM Federation  
Open Programming Model

Presence Awareness  
Encrypted IM with Rich text, Emoticons  
Integration with Microsoft Office, Lotus Notes and Microsoft Outlook

## Lotus Sametime Product Family



# Lotus® Sametime® Unified Telephony



## Delivers

Rich Presence  
Intelligent Call Management

Softphone

Rich Consistent End User Experience

Across Multi PBX Environments

# Lotus knows.

Smarter software for a Smarter Planet.

## Connections

## IBM Lotus Connections



### Homepage

Provides you with a consolidated, drag & drop customizable view, via widgets, of the other Lotus Connections services



### Communities

Create, find, join, and work with communities of people who share a common interest, responsibility, or area of expertise



### Blogs

Use a weblog to present your idea and get feedback from others; learn from the expertise and experience of others who blog



### Dogear

Save, organize and share bookmarks; discover bookmarks that have been qualified by others with similar interests & expertise



### Wikis

Create wiki spaces for individuals, groups, and communities to coauthor pages. View changes across pages, ratings, and comments



### Profiles

Quickly find the people you need by searching across your organization using keywords that help identify expertise



### Files

Upload and share any type of file with colleagues and communities. Store versions and view downloads, comments and ratings.



### Activities

Organize your work, plan next steps, and easily tap your expanding professional network to help execute your everyday deliverables

# Lotus knows.

Smarter software for a Smarter Planet.

Quickr





## Lotus Quickr

- Team Collaboration
- Encourages working together
- Works with existing applications
- Easy to use
- Reduce email attachments
- One single view of files
- Check in / Check out
- Security
- Versioning
- Document Libraries / Templates
- Team Calendars
- Discussion Forums
- Extendible to others

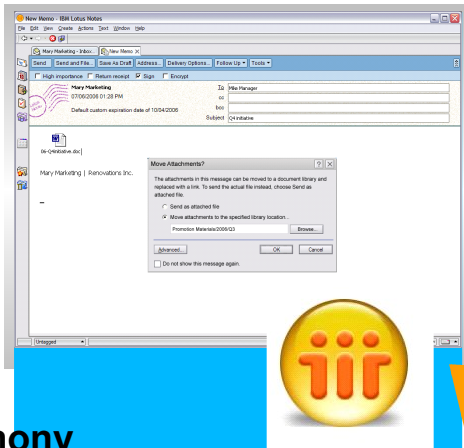




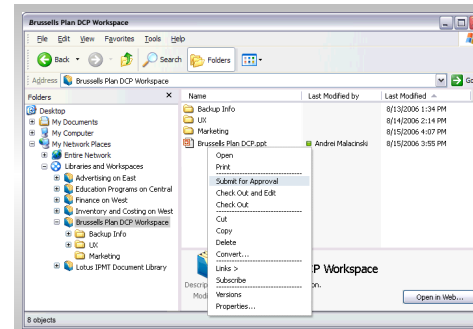
## Lotus Quickr

*Making sharing & collaboration transparent and natural*

Lotus Notes® client

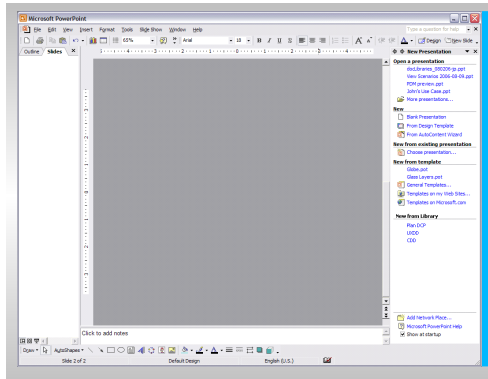


Windows Explorer / "My Documents"

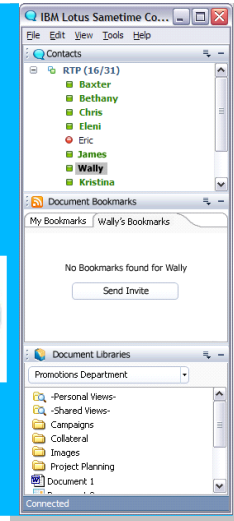


Lotus Sametime®

Lotus Symphony  
Microsoft Office



Mobile



**Lotus knows.**

Smarter software for a Smarter Planet.

# Demonstration

# Lotus knows.

Smarter software for a Smarter Planet.

## Lotus Notes / Traveler



## Lotus Notes / Traveler

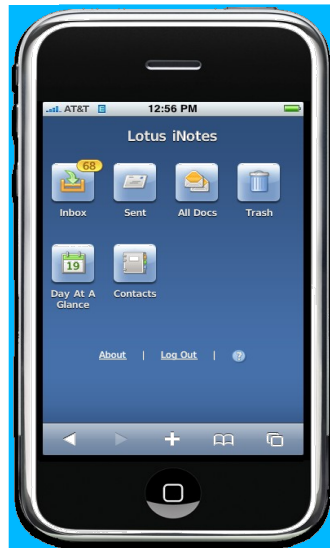


The screenshot shows the Lotus Notes desktop application. The main window displays an email inbox for 'Renata Matthesen on local'. The selected email is 'Re: Alpha Mountain opportunity' from Simon Schulz, dated 13/06/2008 09:47. The email content includes a text message and a bar chart titled 'Product Sales'.

Sender	Subject	Date	Size
Anna Bauer	Halfpipe requirements	13/06/08 11:30	1,234 KB
Amadou Alain	Re: Halfpipe requirements	13/06/08 10:15	13 KB
Simon Schulz	Alpha Mountain opportunity	13/06/08 09:47	14 KB
Pierre Dumont	Re: Alpha Mountain opportunity	13/06/08 09:15	1,345 KB
George Bandini	Global marketing update	13/06/08 07:39	13 KB
Anna Bauer	Latest sales figures by region	13/06/08 23:45	14 KB
Heather Reeds	Please review meeting minutes	12/06/08 19:12	156 KB
Gail Chao	New snowmaking techniques	12/06/08 18:34	356 KB
Amadou Alain	New gondola requirements from Beta Mtn	12/06/08 18:16	10 KB
Marie Anne Gauthier	Request from finance	12/06/08 17:58	46 KB
Jun Wu	Zeta's charitable foundation	11/06/08 16:15	1,678 KB
Gail Chao	Financial reports from 3Q07	11/06/08 14:31	14 KB

**Re: Alpha Mountain opportunity**  
From: Simon Schulz  
To: Renata Matthesen  
Cc: Amy Blank, Gail Chao  
Date: 13/06/2008 09:47

Renata,  
Pierre is the Sales Manager for the Cable transportation division at Zeta and has been working with Alpha Mountain. They are undergoing a rapid expansion and want to improve the facilities for snowboarders and young families. See the growth data below.



**Lotus knows.**

Smarter software for a Smarter Planet.

# Demonstration

## Legal Disclaimer

© IBM Corporation 2009. All Rights Reserved.

The information contained in this publication is provided for informational purposes only. While efforts were made to verify the completeness and accuracy of the information contained in this publication, it is provided AS IS without warranty of any kind, express or implied. In addition, this information is based on IBM's current product plans and strategy, which are subject to change by IBM without notice. IBM shall not be responsible for any damages arising out of the use of, or otherwise related to, this publication or any other materials. Nothing contained in this publication is intended to, nor shall have the effect of, creating any warranties or representations from IBM or its suppliers or licensors, or altering the terms and conditions of the applicable license agreement governing the use of IBM software.

References in this presentation to IBM products, programs, or services do not imply that they will be available in all countries in which IBM operates. Product release dates and/or capabilities referenced in this presentation may change at any time at IBM's sole discretion based on market opportunities or other factors, and are not intended to be a commitment to future product or feature availability in any way. Nothing contained in these materials is intended to, nor shall have the effect of, stating or implying that any activities undertaken by you will result in any specific sales, revenue growth or other results.

If the text contains performance statistics or references to benchmarks, insert the following language; otherwise delete:

Performance is based on measurements and projections using standard IBM benchmarks in a controlled environment. The actual throughput or performance that any user will experience will vary depending upon many factors, including considerations such as the amount of multiprogramming in the user's job stream, the I/O configuration, the storage configuration, and the workload processed. Therefore, no assurance can be given that an individual user will achieve results similar to those stated here.

If the text includes any customer examples, please confirm we have prior written approval from such customer and insert the following language; otherwise delete:

All customer examples described are presented as illustrations of how those customers have used IBM products and the results they may have achieved. Actual environmental costs and performance characteristics may vary by customer.

Please review text for proper trademark attribution of IBM products. At first use, each product name must be the full name and include appropriate trademark symbols (e.g., IBM Lotus® Sametime® Unyte™). Subsequent references can drop "IBM" but should include the proper branding (e.g., Lotus Sametime Gateway, or WebSphere Application Server). Please refer to <http://www.ibm.com/legal/copytrade.shtml> for guidance on which trademarks require the ® or ™ symbol. Do not use abbreviations for IBM product names in your presentation. All product names must be used as adjectives rather than nouns. Please list all of the trademarks that you use in your presentation as follows; delete any not included in your presentation.

IBM, the IBM logo, Lotus, Lotus Notes, Notes, Domino, Quickr, Sametime, WebSphere, UC2, PartnerWorld and Lotusphere are trademarks of International Business Machines Corporation in the United States, other countries, or both. Unyte is a trademark of WebDialogs, Inc., in the United States, other countries, or both.

If you reference Adobe® in the text, please mark the first use and include the following; otherwise delete:

Adobe, the Adobe logo, PostScript, and the PostScript logo are either registered trademarks or trademarks of Adobe Systems Incorporated in the United States, and/or other countries.

If you reference Java™ in the text, please mark the first use and include the following; otherwise delete:

Java and all Java-based trademarks are trademarks of Sun Microsystems, Inc. in the United States, other countries, or both.

If you reference Microsoft® and/or Windows® in the text, please mark the first use and include the following, as applicable; otherwise delete:

Microsoft and Windows are trademarks of Microsoft Corporation in the United States, other countries, or both.

If you reference Intel® and/or any of the following Intel products in the text, please mark the first use and include those that you use as follows; otherwise delete:

Intel, Intel Centrino, Celeron, Intel Xeon, Intel SpeedStep, Itanium, and Pentium are trademarks or registered trademarks of Intel Corporation or its subsidiaries in the United States and other countries.

If you reference UNIX® in the text, please mark the first use and include the following; otherwise delete:

UNIX is a registered trademark of The Open Group in the United States and other countries.

If you reference Linux® in your presentation, please mark the first use and include the following; otherwise delete:

Linux is a registered trademark of Linus Torvalds in the United States, other countries, or both.

Other company, product, or service names may be trademarks or service marks of others.

