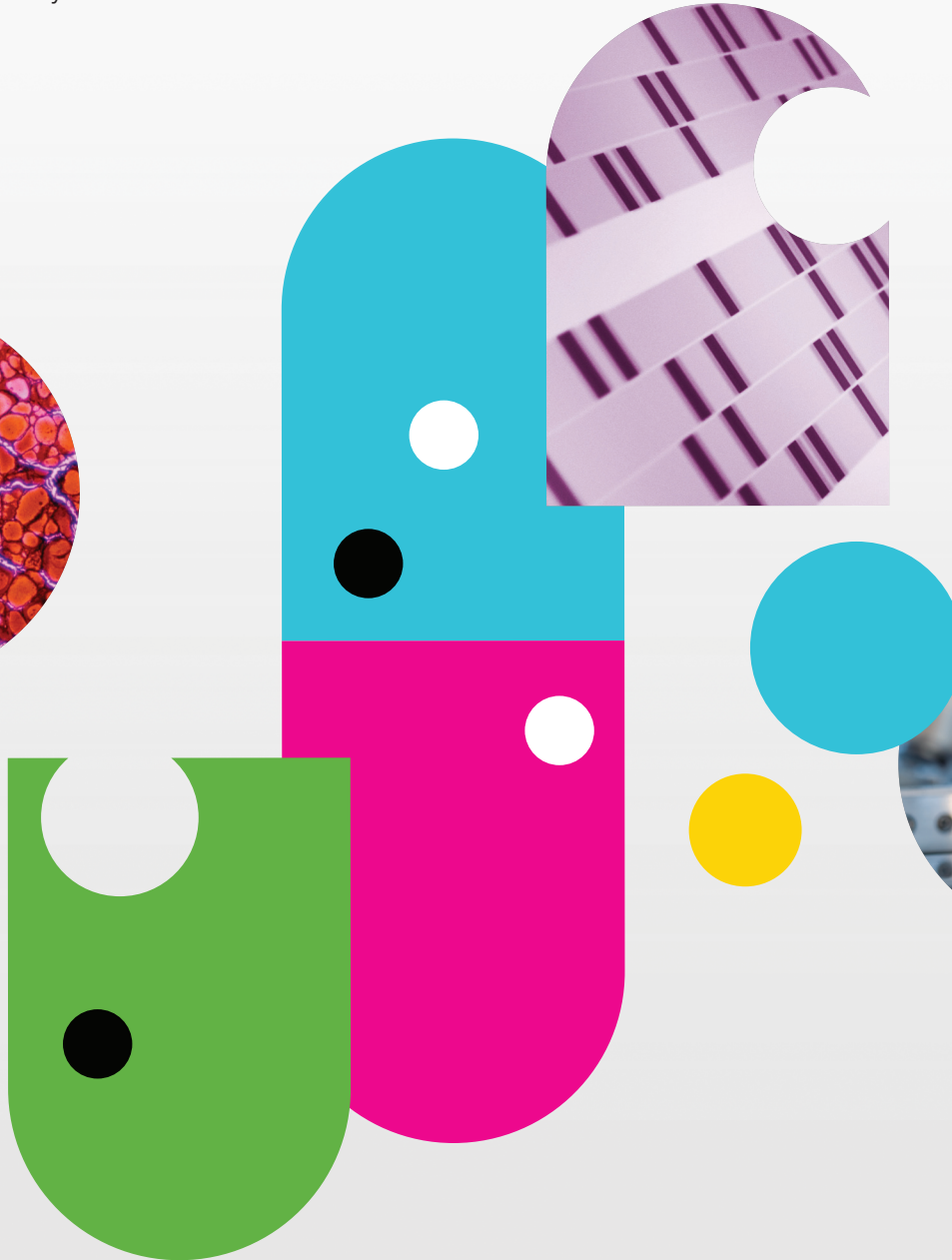
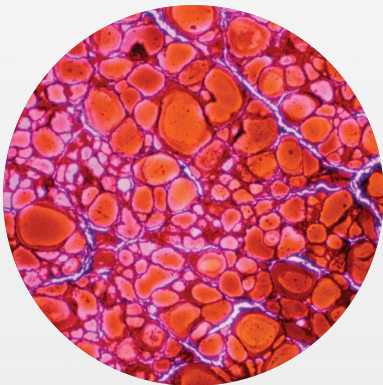




# The NHS and IBM's Smarter Healthcare Vision

The people of the UK place a high value on the NHS but also place increasing demands on the care and services it provides. The NHS is moving into a new era of unprecedented pressure to do more, to do it better, but for less money. The challenges and uncertainties that currently face the NHS need to be addressed in part by innovative healthcare solutions driven by a Smarter Healthcare Vision.



## The NHS and IBM's Smarter Healthcare Vision

Smarter Healthcare is the way ahead. It uses advanced technology to generate and share accurate information in real-time. It turns that information into insight, which is the essential tool for every NHS decision-maker from clinicians, to managers and directors, to enhance their ability to make effective decisions, quickly, based upon the most up to date information.

Smarter Healthcare simultaneously enables healthcare providers to electronically collect and store the data needed to deliver a full range of high-quality patient-centred services. It ensures their systems exchange all relevant information in real-time, and it builds systems that evolve and adapt to changing needs. In short, Smarter Healthcare systems are instrumented, interconnected and intelligent.

The NHS is good at collecting data, via manual methods and being well instrumented. However, it has difficulty in sharing information and maximising its usefulness. Many NHS organisations rely upon stand-alone systems; their information is trapped in silos.

All these difficulties prevent the NHS from building intelligent information systems which can help it learn and adapt to changing needs. Smarter Healthcare solutions solve these problems. They meet the needs of organisations of many sizes and types, and they allow existing systems and assets to be maintained, ensuring the best return on original investments.

Smarter Healthcare is ideally suited to the NHS as it allows services to become more joined up, breaking through traditional service and technology barriers, and enabling healthcare professionals to collaborate – delivering the best possible care, whatever the setting and circumstances. Smarter Healthcare focuses upon three key practical goals for the NHS:



Improve patient outcomes



Increase operational performance and efficiency



Reduce clinical risk

## Smarter Healthcare Delivers

Smarter Healthcare solutions support staff in every area from frontline care to finance, and from IT to commissioning. They are ideal for the primary care as well as the acute sectors. A key facet is that they adapt to change, which is essential for the NHS with the emergence in England of GP-led commissioning and the growing emphasis on foundation trusts.

The NHS finds Smarter Healthcare solutions so effective because they are built around five essentials:

- **Interoperability** – it's an absolute must to link up existing systems so they can access and update the information they hold
- **Aggregation** – so information from different sources can be selected and usefully grouped
- **Intelligent Views** – displaying information (whether it's the written word, charts or medical images) in ways that are intuitive and easy to use
- **Contextualisation** – ensuring information is displayed in its proper context and can be fully understood, allowing well-informed decisions
- **Analytics** – the ability to identify trends and exceptions and predict future service requirements. There are many examples of advantages that Smarter Healthcare has brought to the NHS.

Clinical risk was reduced at one trust by introducing a solution for the remote monitoring of medical devices, keeping staff in constant touch with the condition of patients accommodated in single rooms. Performance and efficiency were improved at a second trust thanks to a clinical portal which aggregated information from core systems, such as pathology and pharmacy, to provide clinicians with a real-time patient care summary. Elsewhere, outcomes were improved thanks to a tracking system which ensured referral to treatment targets were met – also allowing better resource management and yielding higher levels of patient satisfaction.

## Solutions Overview

IBM's comprehensive Smarter Healthcare solutions are designed for healthcare providers of all kinds. Our solutions suit the differing needs of the NHS in the UK. They include;

- **Clinical Portal** – provides a single view of relevant patient data from integrated operational systems for real-time clinical decision support
- **Healthcare Analytics** – aggregates data into a structured database and lets users generate reports and views for analysis, reporting, and research
- **Care Pathway Optimisation** – definition, refinement and automation of care pathways and associated workflow
- **Electronic Medical Record** – creates a single comprehensive patient record from multiple disparate information sources and formats
- **Real-Time Asset Locator for Health** – allows hospitals to keep track of stocks and assets and associated maintenance
- **Medical Device Integration** – displays readings and alerts from electronic equipment so hospital patients can be monitored by staff from a central station or location
- **Telehealth Integration** – for the home monitoring of patients with chronic conditions
- **Health Information Exchange** – provides an integrated care record and master patient management capability across a local health economy.

## Why IBM?

IBM has been working with the NHS for many years to gain a real insight into its needs. We have collaborated with clinicians and managers to develop the IBM Smarter Healthcare solutions. The result is a set of offerings which are perfectly suited to addressing the needs and challenges of the NHS as it moves into this new era.

Smarter Healthcare brings impressive results – generating complete and accurate patient information which clinicians can depend upon, delivering more personalised healthcare, and facilitating continuous improvement and sustainable change.

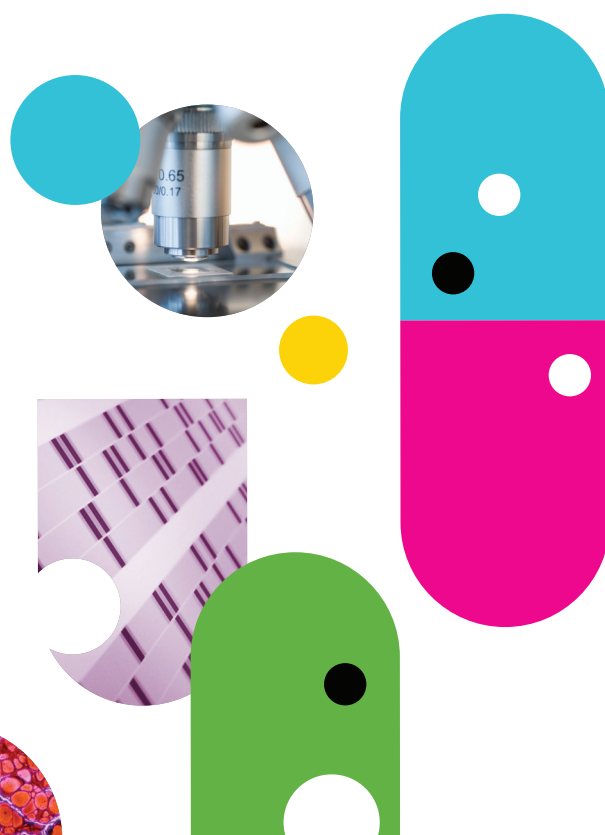
Smarter Healthcare solutions have been developed for use in the NHS to connect people and provide information, bringing clear benefits for patients and providers. They;

- reduce the length of inpatient stays
- cut repeat tests and examinations
- improve point of care decisions
- enhance collaboration and service integration
- end dependence upon paper records.

## For more information

Visit our website at

[ibm.com/easyaccess/publicuk/healthcare](http://ibm.com/easyaccess/publicuk/healthcare)  
for more details about Smarter Healthcare.



**IBM United Kingdom Limited**

PO Box 41  
North Harbour  
Portsmouth  
Hampshire  
PO6 3AU  
United Kingdom

**IBM Ireland Limited**

Oldbrook House  
24-32 Pembroke Road  
Dublin 4  
Ireland

IBM Ireland Limited registered in Ireland under company number 16226.

The IBM home page can be found at **ibm.com**

IBM, the IBM logo and ibm.com are trademarks or registered trademarks of International Business Machines Corporation in the United States, other countries, or both. If these and other IBM trademarked terms are marked on their first occurrence in this information with a trademark symbol (® or ™), these symbols indicate U.S. registered or common law trademarks owned by IBM at the time this information was published. Such trademarks may also be registered or common law trademarks in other countries.

A current list of IBM trademarks can be found at:  
<http://www.ibm.com/legal/copytrade.shtml>

Other company, product and service names may be trademarks, or service marks of others.

References in this publication to IBM products, programs or services do not imply that IBM intends to make these available in all countries in which IBM operates. Any reference to an IBM product, program or service is not intended to imply that only IBM products, programs or services may be used. Any functionally equivalent product, program or service may be used instead.

IBM hardware products are manufactured from new parts, or new and used parts. In some cases, the hardware product may not be new and may have been previously installed. Regardless, IBM warranty terms apply.

This publication is for general guidance only. Information is subject to change without notice. Please contact your local IBM sales office or reseller for latest information on IBM products and services.

IBM does not provide legal, accounting or audit advice or represent or warrant that its products or services ensure compliance with laws. Clients are responsible for compliance with applicable securities laws and regulations, including national laws and regulations.

Photographs may show design models.

© Copyright IBM Corporation 2011  
All Rights Reserved.



Please Recycle