

Bhoopat Patel & Pau Duró , 20<sup>th</sup> June 2016

# London Stock Exchange

## *Journey from FSR to CDM*



**London**  
Stock Exchange Group



# Overview

1. LSEG – Introduction
2. FSR to CDM journey
  - 2.1 Why CDM?
  - 2.2 Project Approach and Timelines
  - 2.3 Challenges
  - 2.4 Key Benefits
  - 2.5 Next Steps
3. Summary LSEG – FSR to CDM Journey

# 1. LSEG – Introduction



---

London Stock Exchange Group is a diversified international market infrastructure and capital markets business sitting at the heart of the world's financial community.

---

The Group operates a broad range of international equity, bond and derivatives markets, including London Stock Exchange; Borsa Italiana; MTS, Europe's leading fixed income market; and Turquoise, a pan-European equities MTF. Through its platforms, the Group offers international business and investors unrivalled access to Europe's capital markets.

---

The Group is a global leader in indexing and analytic solutions. FTSE and Russell Indexes offer thousands of indices that measure and benchmark markets around the world.

---

Headquartered in London, with significant operations in North America, Italy, France and Sri Lanka, the Group employs approximately 4,700 people.

## 2.1 FSR to CDM journey – Why CDM?

- ❑ Relationship with IBM already existed with the FSR tool used for last mile reporting
- ❑ A review of finance systems across the entire Group led to the Implementation of a new Group consolidation system [HFM] and ERP [Oracle]
- ❑ A number of the leading vendor's were considered for disclosure management including IBM's Cognos Disclosure Management
- ❑ Selection criteria included connectivity of external systems, ease and speed to go-live and user training requirements
- ❑ Outcome: IBM preferred supplier for the CDM Solution

## 2.2 FSR to CDM journey – Project Approach and Timelines

### □ Scope

- Group Annual Accounts
- Group Interim Account
- LSE Plc Company accounts
- On-Premise Installation

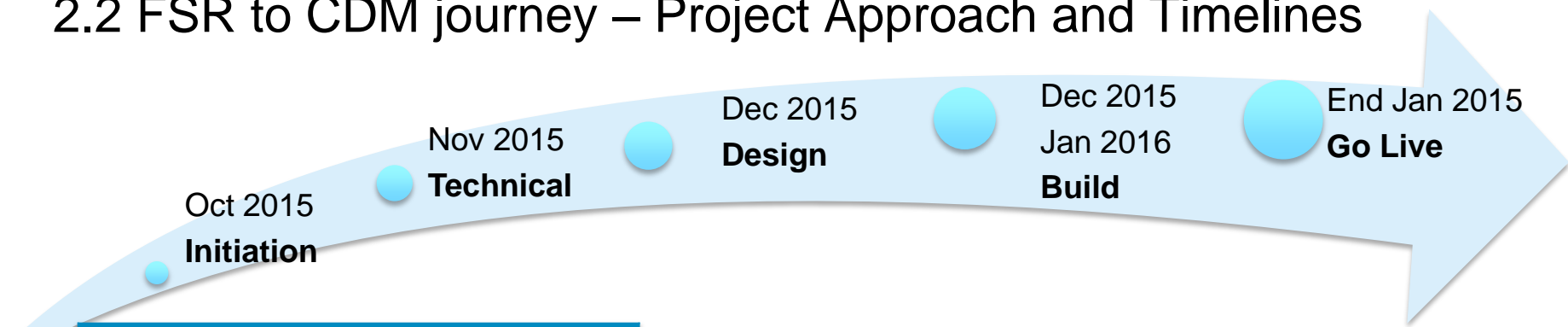
### □ Quick Response for Resourcing

- Project resources allocated to start within 1 week, both LSEG and IBM teams
- Agreed milestones / timelines

### □ Collaborative Approach

- Knowledge Transfer from IBM to in-house LSEG Teams (on site 1 to 1 time)
- Sharing of Best Practices

## 2.2 FSR to CDM journey – Project Approach and Timelines



CDM Training – 3 day training course	
Online CDM Training	5 Users

LSEG Effort Days	
Technical WS	15 days
Design WS	9 days
Build WS	11 days
Go Live WS	2 days
PM WS	5 days
<b>TOTAL</b>	<b>47 days</b>

IBM SWG CDM Consultancy Services	
Technical WS	7 days
Design WS	3 days
Build WS	8 days
Go Live WS	2 days
PM WS	2 days
<b>TOTAL</b>	<b>22 days</b>

## 2.3 FSR to CDM journey – Challenges

### Tight deadlines

- Schedule Resources
- Financial Year End

### Current/Future LSE Finance applications

- TM1 / HFM / CDM
- Excel add-ons

### Readiness of Technical Environments

- Production/Test/Dev
- LSE Infrastructure

### New Finance systems program

- Parallel implementation
- Latest software versions

## 2.4 FSR to CDM journey – Key Benefits

### Functional

- Connectivity to data sources is agnostic
- Data governance
- Performance improved

### Newly adopted features

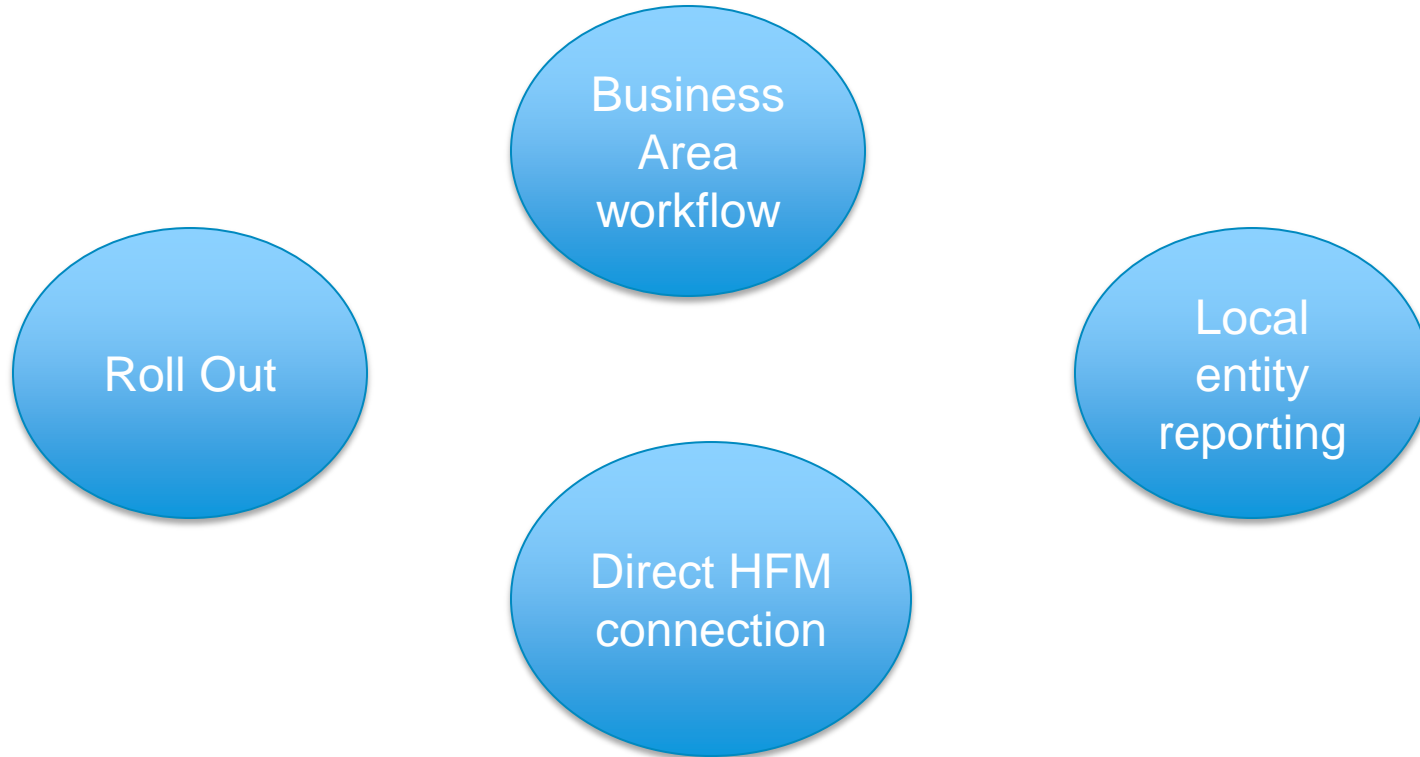
- Multiple windows, Smartview and TM1 connections

### Talent Development (Human Cap)

- In-house capability skilled up, CDM knowledge transfer



## 2.5 FSR to CDM journey – Next Steps



### 3. Summary LSEG – FSR to CDM Journey

LSE have implemented the migration of IBM FSR to IBM CDM for their Annual Accounts within a **10 week timeframe from initiation to Go Live.**

The key project objectives

- migrate the FSR tool to IBM CDM for the Annual Accounts
- enhance the reporting capability
- Go Live for Year End Reporting

The key benefits

- Better performing reporting capability and End to End Process with control
- Better understanding by the Finance Team of the CDM tool achieved through education and a collaborative project approach

# THANK YOU



**London**  
Stock Exchange Group

A Duerden , 20<sup>th</sup> June 2016

# IBM SWG Services Solution Services Offerings



# Summary Solution Offerings Framework – Performance Management

<i>Explore &amp; Plan</i>	<i>Deliver &amp; Deploy</i>	<i>Run &amp; Optimize</i>	<i>Adopt &amp; Extend</i>
<ul style="list-style-type: none"> <li>• Discovery Workshops</li> <li>• Solution Planning</li> <li>• Transition Planning</li> </ul>	<ul style="list-style-type: none"> <li>• Quick Wins</li> <li>• Design services</li> <li>• Installation services (on-premise)</li> <li>• Implementation</li> <li>• Integration</li> <li>• Migration &amp; Conversion</li> </ul>	<ul style="list-style-type: none"> <li>• Health Checks</li> <li>• Performance Tuning</li> </ul>	<ul style="list-style-type: none"> <li>• Extension Development</li> <li>• Upgrades</li> <li>• Center of Excellence (ACE) Enablement</li> </ul>
	<ul style="list-style-type: none"> <li>• On-boarding Services</li> <li>• Jump Starts</li> </ul>	<ul style="list-style-type: none"> <li>• SaaS Operations</li> <li>• Managed Cloud Services</li> </ul>	<ul style="list-style-type: none"> <li>• SaaS Operations</li> <li>• Managed Cloud Services</li> </ul>
<ul style="list-style-type: none"> <li>• Skills Assessments</li> <li>• Training Planning</li> </ul>	<ul style="list-style-type: none"> <li>• Education courses</li> <li>• Private training</li> <li>• Enterprise Learning License</li> </ul>	<ul style="list-style-type: none"> <li>• Education courses</li> <li>• Private training</li> <li>• Enterprise Learning License</li> </ul>	<ul style="list-style-type: none"> <li>• Education courses</li> <li>• Private training</li> <li>• Enterprise Learning License</li> <li>• User Adoption services</li> </ul>
Engagement Managers, IBM SWG Services Services Sellers, IBM SWG Services			
IBM Subscription & Support			

## Legal Disclaimer

- © IBM Corporation 2015. All Rights Reserved.
- The information contained in this publication is provided for informational purposes only. While efforts were made to verify the completeness and accuracy of the information contained in this publication, it is provided AS IS WITHOUT WARRANTY of any kind, express or implied. In addition, this information is based on IBM's current product plans and strategy, which are subject to change by IBM without notice. IBM shall not be responsible for any damages arising out of the use of, or otherwise related to, this publication or any other materials. Nothing contained in this publication is intended to, nor shall have the effect of, creating any warranties or representations from IBM or its suppliers or licensors, or altering the terms and conditions of the applicable license agreement governing the use of IBM software.
- References in this presentation to IBM products, programs, or services do not imply that they will be available in all countries in which IBM operates. Product release dates and/or capabilities referenced in this presentation may change at any time at IBM's sole discretion based on market opportunities or other factors, and are not intended to be a commitment to future product or feature availability in any way. Nothing contained in these materials is intended to, nor shall have the effect of, stating or implying that any activities undertaken by you will result in any specific sales, revenue growth or other results.
- If the text contains performance statistics or references to benchmarks, insert the following language; otherwise delete:  
Performance is based on measurements and projections using standard IBM benchmarks in a controlled environment. The actual throughput or performance that any user will experience will vary depending upon many factors, including considerations such as the amount of multiprogramming in the user's job stream, the I/O configuration, the storage configuration, and the workload processed. Therefore, no assurance can be given that an individual user will achieve results similar to those stated here.
- If the text includes any customer examples, please confirm we have prior written approval from such customer and insert the following language; otherwise delete:  
All customer examples described are presented as illustrations of how those customers have used IBM products and the results they may have achieved. Actual environmental costs and performance characteristics may vary by customer.
- Please review text for proper trademark attribution of IBM products. At first use, each product name must be the full name and include appropriate trademark symbols (e.g., IBM Lotus® Sametime® Unyte™). Subsequent references can drop "IBM" but should include the proper branding (e.g., Lotus Sametime Gateway, or WebSphere Application Server). Please refer to <http://www.ibm.com/legal/copytrade.shtml> for guidance on which trademarks require the ® or ™ symbol. Do not use abbreviations for IBM product names in your presentation. All product names must be used as adjectives rather than nouns. Please list all of the trademarks that you use in your presentation as follows; delete any not included in your presentation. IBM, the IBM logo, Lotus, Lotus Notes, Notes, Domino, Quickr, Sametime, WebSphere, UC2, PartnerWorld and Lotusphere are trademarks of International Business Machines Corporation in the United States, other countries, or both. Unyte is a trademark of WebDialogs, Inc., in the United States, other countries, or both.
- If you reference Adobe® in the text, please mark the first use and include the following; otherwise delete:  
Adobe, the Adobe logo, PostScript, and the PostScript logo are either registered trademarks or trademarks of Adobe Systems Incorporated in the United States, and/or other countries.
- If you reference Java™ in the text, please mark the first use and include the following; otherwise delete:  
Java and all Java-based trademarks are trademarks of Sun Microsystems, Inc. in the United States, other countries, or both.
- If you reference Microsoft® and/or Windows® in the text, please mark the first use and include the following, as applicable; otherwise delete:  
Microsoft and Windows are trademarks of Microsoft Corporation in the United States, other countries, or both.
- If you reference Intel® and/or any of the following Intel products in the text, please mark the first use and include those that you use as follows; otherwise delete:  
Intel, Intel Centrino, Celeron, Intel Xeon, Intel SpeedStep, Itanium, and Pentium are trademarks or registered trademarks of Intel Corporation or its subsidiaries in the United States and other countries.
- If you reference UNIX® in the text, please mark the first use and include the following; otherwise delete:  
UNIX is a registered trademark of The Open Group in the United States and other countries.
- If you reference Linux® in your presentation, please mark the first use and include the following; otherwise delete:  
Linux is a registered trademark of Linus Torvalds in the United States, other countries, or both. Other company, product, or service names may be trademarks or service marks of others.
- If the text/graphics include screenshots, no actual IBM employee names may be used (even your own), if your screenshots include fictitious company names (e.g., Renovations, Zeta Bank, Acme) please update and insert the following; otherwise delete: All references to [insert fictitious company name] refer to a fictitious company and are used for illustration purposes only.