

Vodafone Corporate Managed Data Solutions

Technology Update

Simon Jones

Business Development Manager



Managed Data Solutions

Used Where:

- Application is Business Critical
- Application is high-volume

Vodafone's Managed Data approach provides a resilient solution for high-volume usage, giving clear visibility of data traffic.

Range Of Services

- Large Volume SMS & Wireless Data
- GSM Data, Packet Radio (Paknet)
- Upgrade Path to New Network

Technologies

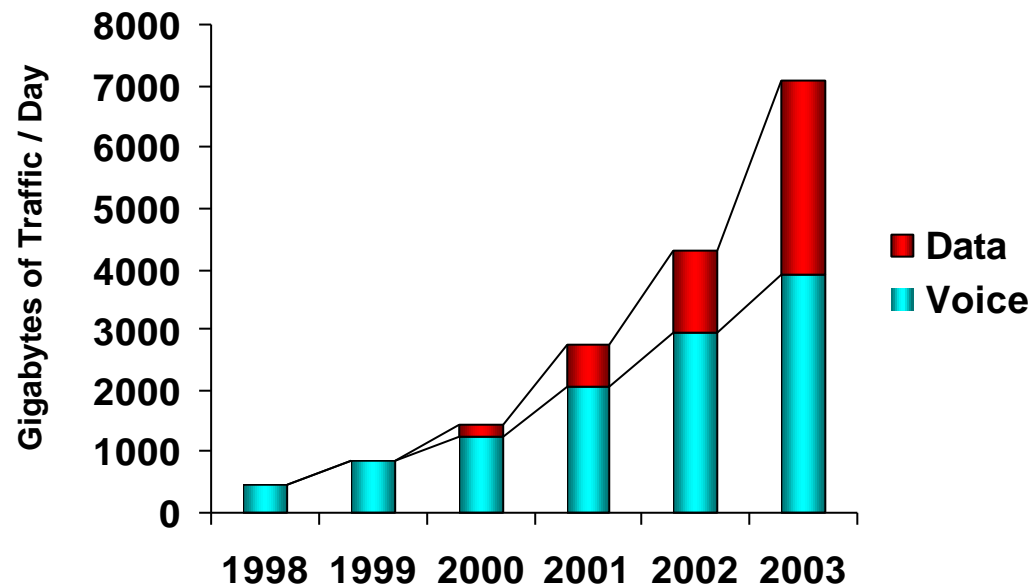


Managed Data Solutions

- What you can do today
 - What's coming in the future?
 - Network Developments
 - Terminal Developments
- What you can do today

Traffic: Voice versus Data Trend

-- Global Traffic Forecast Model --



Data traffic is forecast to grow at a CAGR ~ 370% from 1999 - 2003

Currently, data traffic accounts for around 2% of mobile traffic

By 2003, forecasts anticipate usage of around 45% (~3200 Gigabytes of traffic per day)

Source: Merrill Lynch: "The Road to the Mobile Internet", Sept 1999

Managed Data Solutions

What Solutions do we find most businesses looking at?

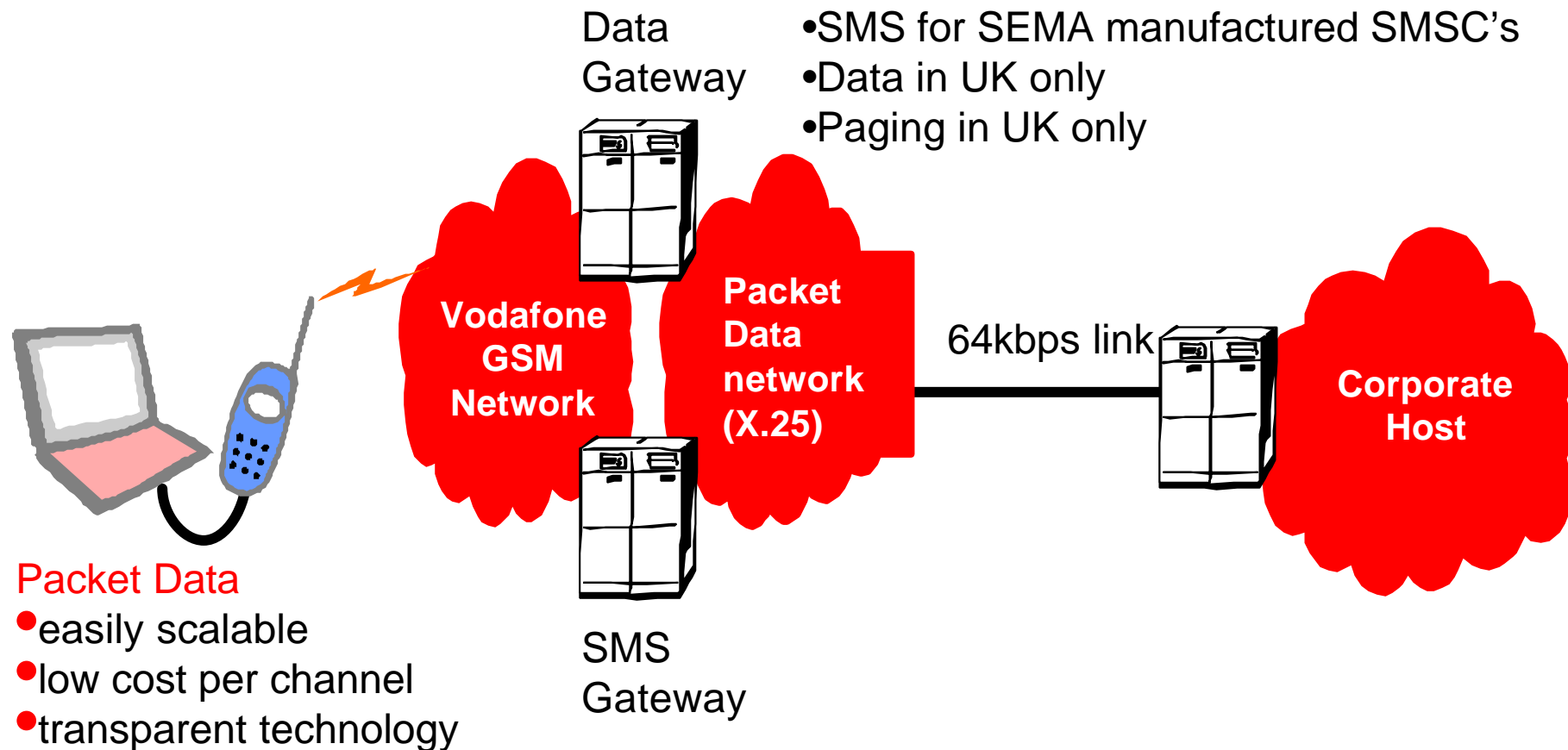
- Remote Office
- Service Management/Job Scheduling
- Remote Worker/Vehicle Positioning & Telematics
- Remote Monitoring/Telemetry
- Large Volume SMS
- Sales Team Support/Sales Order Processing

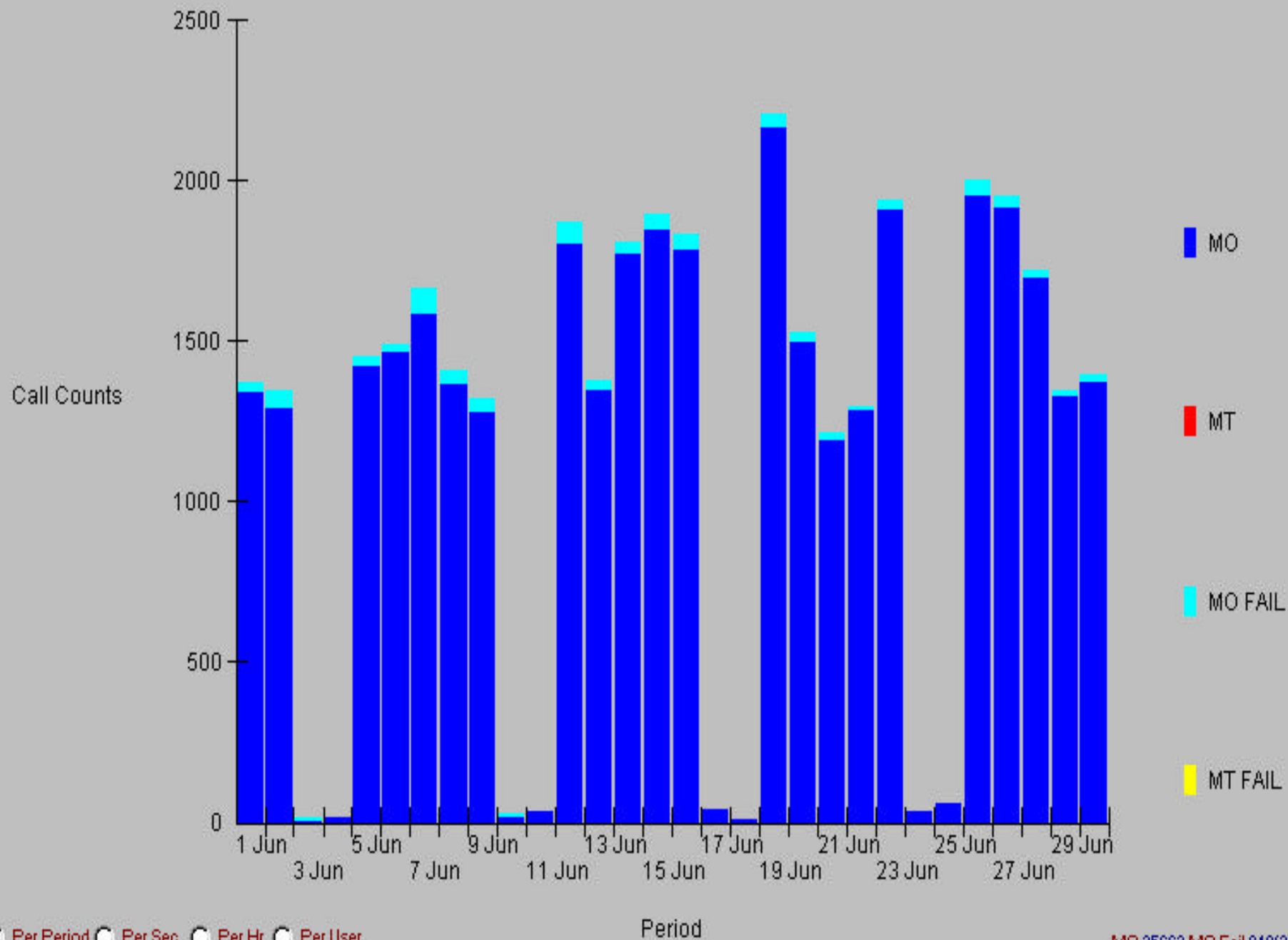
Vodafone Has A Strong Track Record In Data Services

Resilience & Robustness

- Voice Data Fone – Data focus from start
- Packet Radio Network since 1989 – telemetry & transaction applications
- SMS – huge growth & high resilience. High functionality.
- GSM Data – corporate & business applications

The Vodafone Approach To Mobile Data

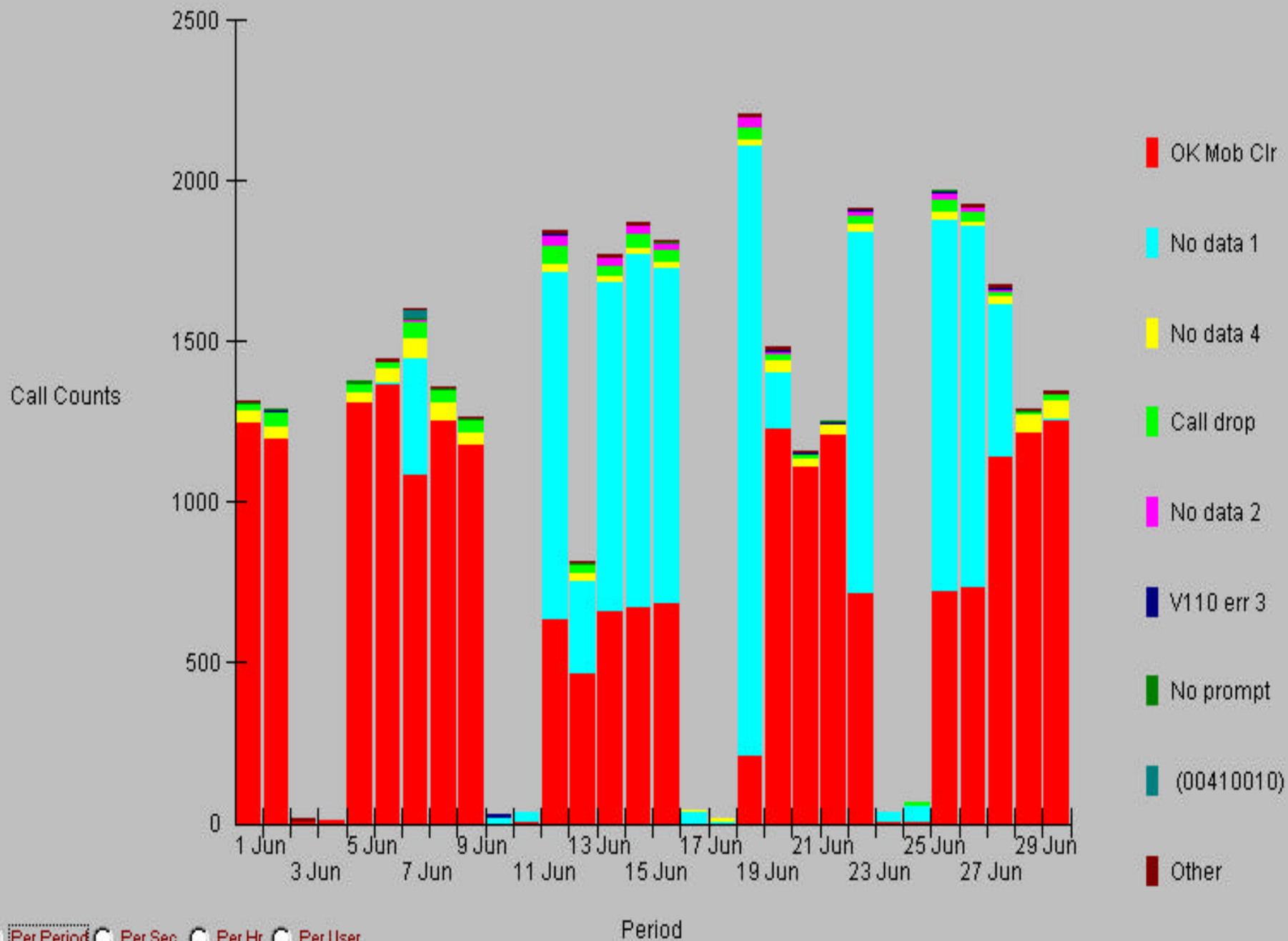




Per Period Per Sec Per Hr Per User

X25 Records (176/176 MSISDN (BW/MO))

MO:35663 MO Fail:849(2.4%)
MT:0 MT Fail:0



☒ Per Period ☐ Per Sec ☐ Per Hr ☐ Per User

X25 Records (176/176 MSISDN (BW/MQ))

Vodafone Has A Strong Track Record In Data Services

We Monitor Ourselves

- 6 million+ data & SMS calls throughout the UK per year
- Results fully analysed and displayed in real time
- Gives a central view of network performance & status
- Monitors if network is working correctly
 - Checks for congestion issues
 - checks for loading weak spots

Business Partners Programme



Various
solutions
are on
offer



Concerted Move Towards Mobile Data

- Improve Working Process
 - Reduce manual data entry and duplication
 - Make more efficient use of existing workforce
- Reduce business costs
 - Greater efficiency
 - Reduce voice costs
- Reduce Property
- Quality of Service!!

Vodafone Technology Update

What's New?

What's Happening?

What's Coming?

Network Developments

What's Happening Now?

- We are adding more than 5,000 extra UK GSM cells
- GSM Coverage exceeding 99% of population
- Upgrade of existing Packet Network

GPRS 3G UMTS

EDGE

Bluetooth

HSCSD

WAP

Handset/Terminal Technologies

- Bluetooth

- Open short range radio link protocol
- Typically 10m range
- Connection between phones, PCs, other peripherals
- Replace the need for many different cables

Handset/Terminal Technologies

- Symbian/EPOC

- Open operating system for wireless information devices
- Common platform across smart phones, PCs, Handhelds, Palmtops
- Common application software and communication protocols
- *Starting now!*



Handset/Terminal Technologies

Large SIM/SIM Toolkit (32 or 64k SIM)

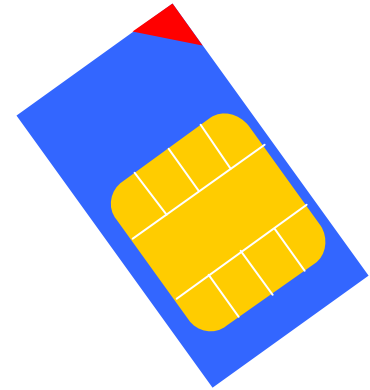
- Management of applications on the SIM memory

Applications?

- Banking services
- Flight bookings
- Information services

Issues

- SIM specific
- SIM ownership
- SIM access authority



Handset/Terminal Technologies

WAP

- Wireless Access Protocol
- Open mobile protocol to access WML based web information
- Vizzavi portal from Vodafone
- Still in early days of the technology
- GPRS should improve the experience
 - Vodafone publicly demonstrated WAP over GPRS on Psion platform March 2000



New Network Technologies

HSCSD - High Speed Circuit Switched Data - up to 56K?

- standard GSM using multiple time slots of 14.4K (??)

Issues

- HSCSD quickly superceded by GPRS
- Handset Availability?

New Network Technologies

GPRS - General Packet Radio Service

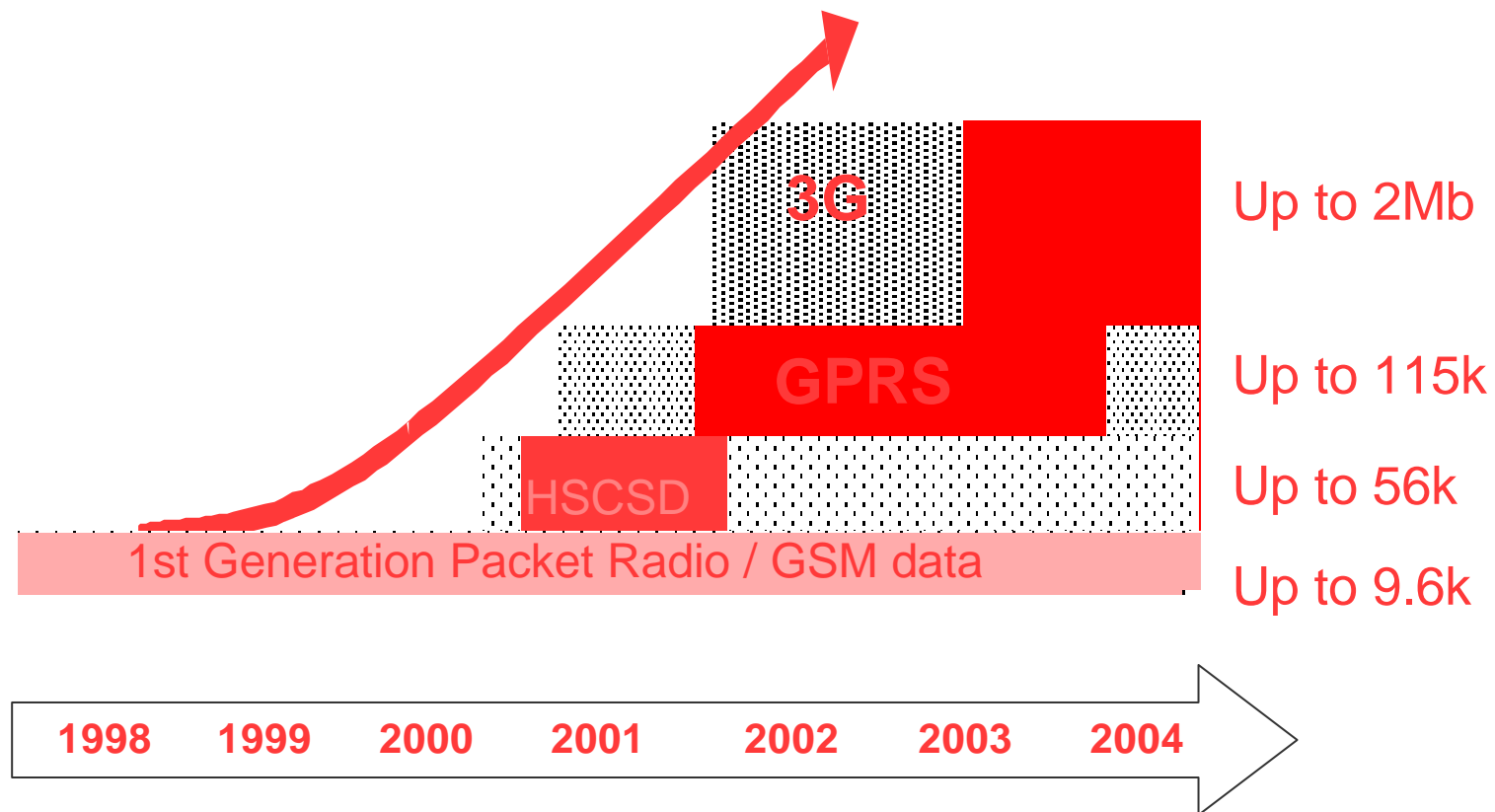
- Much higher data rates of 84k!!!
 - Expect equipment speeds of around 40-50k
- Packet Switched
- Trials from Jan 2000 network roll out from Aug 2000
- Live **NATIONWIDE** service commencing April 2001
- “ALWAYS ON”

New Network Technologies

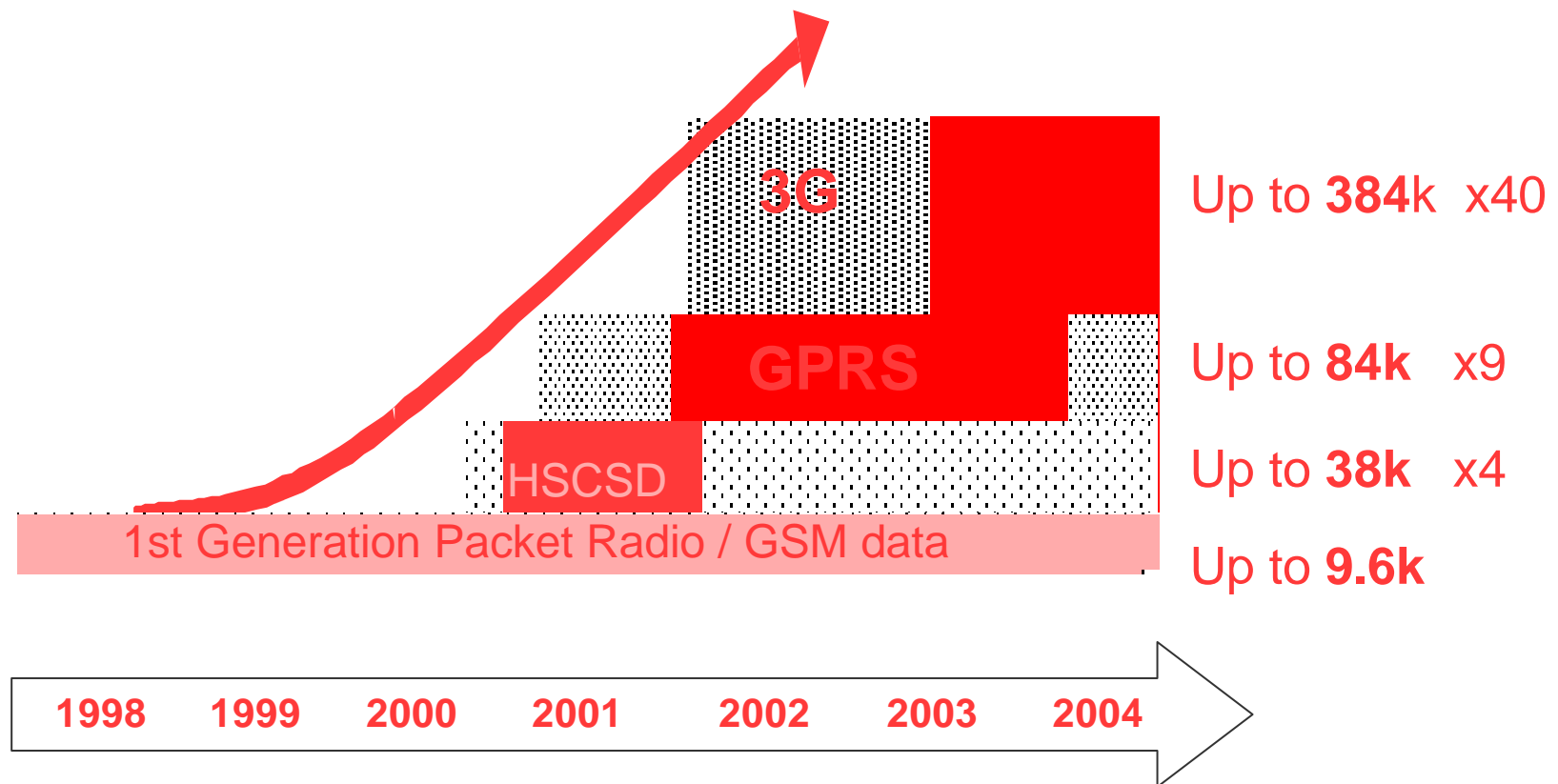
3G (UMTS - Universal Mobile Telecommunications System)

- Massively high data speeds up to 384k
- New global standard
- Also Packet Switched
- UK licence auction completed end April 2000, fiercely competed
- European & World Auctions throughout 2000 & early 2001
- Huge investment required in infrastructure

Hype Warning!!



When & How Fast?



GPRS Equipment Roadmap

Multi-slot (2+1) handsets available early Q1 2001 onwards



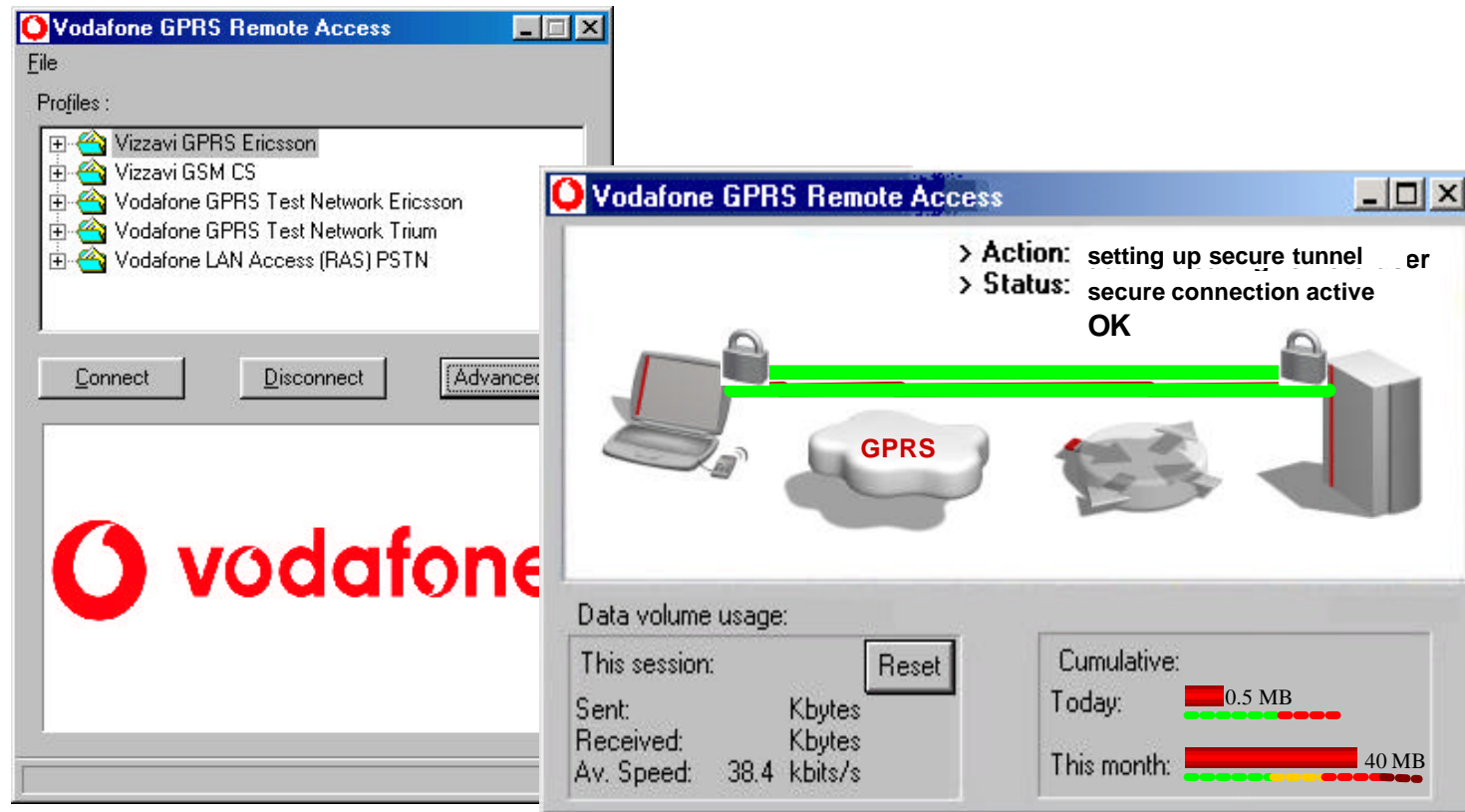
Multi-slot PCMCIA
Q2, 2001



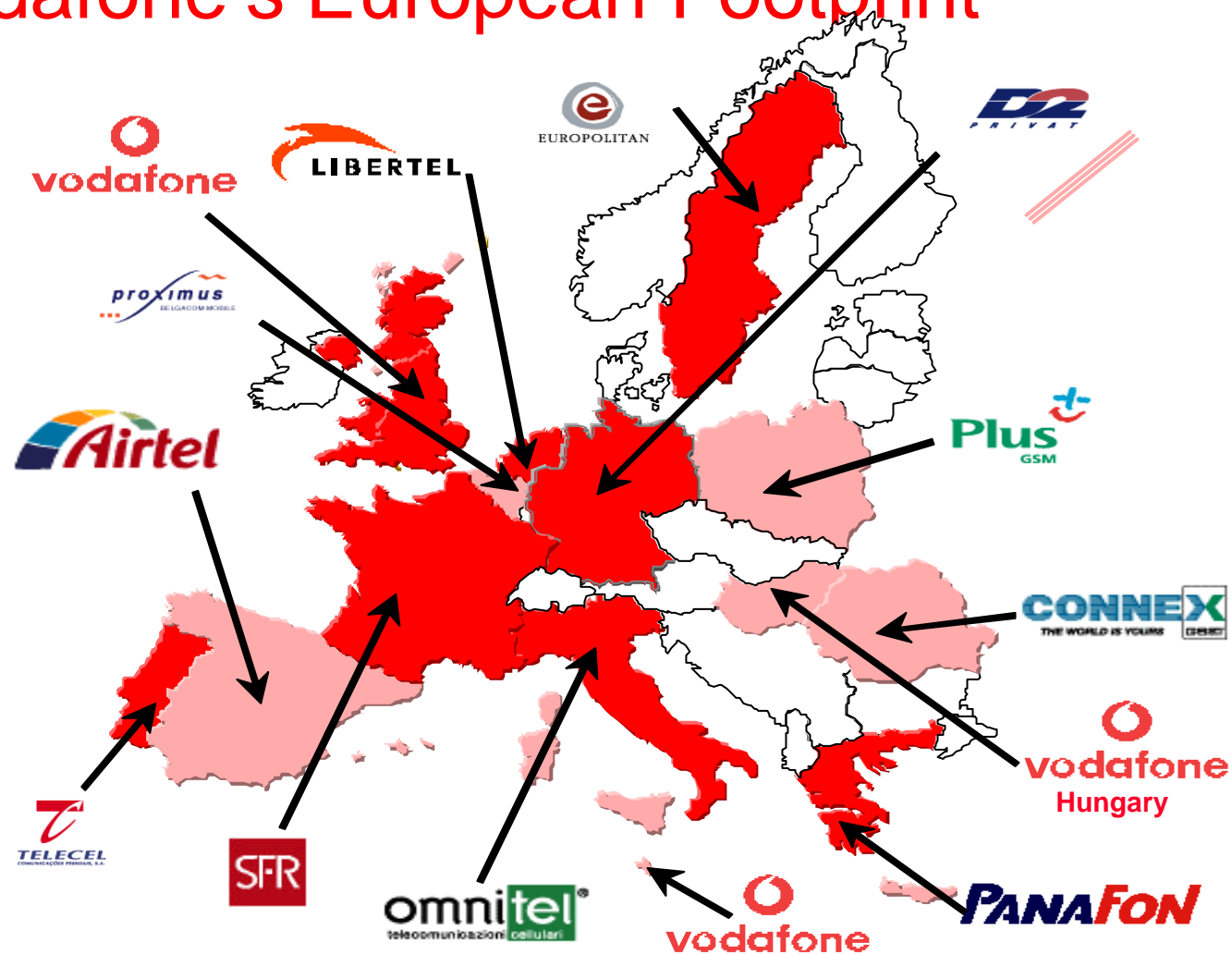
Two-box initially,
integrated PDAs Q2
2001 onwards

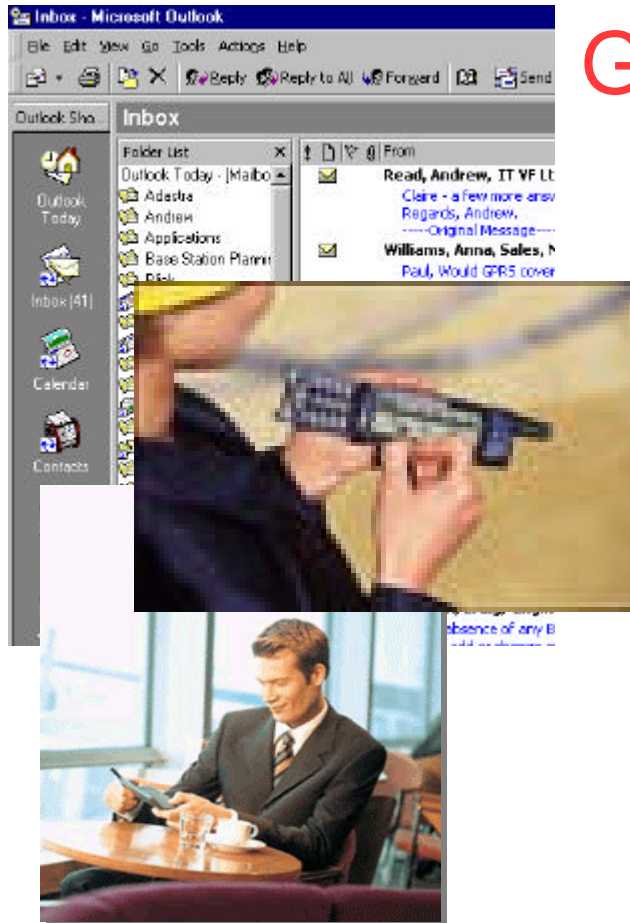


Example of user output



Vodafone's European Footprint





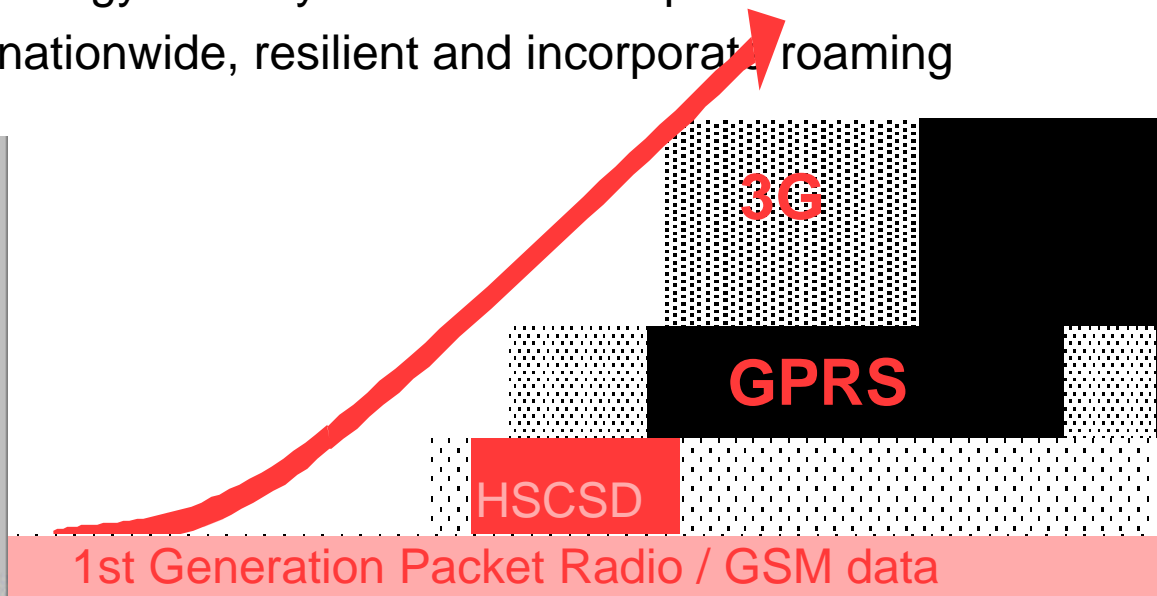
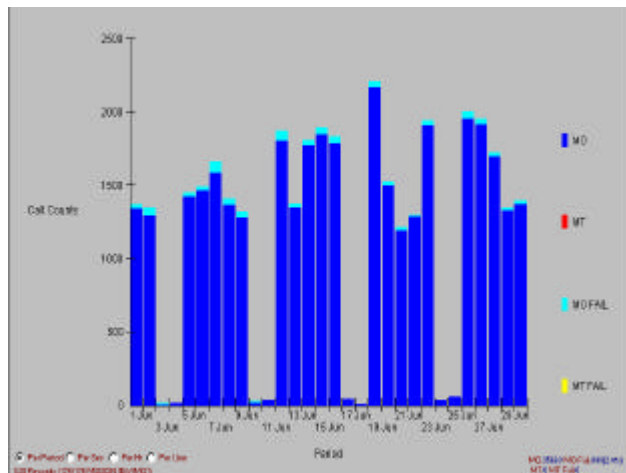
GPRS Corporate Applications

- Wireless Office & Remote Working
 - Email
 - Calendar
 - Task Management
- Web Access
- File Transfer
- Corporate Information Services

*“Always
ON”*

Corporate Mobile Working - Where Vodafone Fit In

- Very strong track record in Mobile Data Applications
- Dedicated specialist approach to Corporate applications
- Use the appropriate technology to suit your business requirement
- GPRS launch to be fully nationwide, resilient and incorporate roaming





vodafone