

IBM® Security Access Manager for Enterprise Single Sign-On

(Versions 8.0.1, 8.1 and 8.2)



Cook Book for Web Auto Learn AccessProfile
Windows Components Profile Bundle

Edition notice

Note: This edition applies to Windows Components Profile version 1.2 for IBM Tivoli Access Manager for Enterprise Single Sign-On, versions 8.0.1 and 8.1, to IBM Security Access Manager for Enterprise Single Sign-On version 8.2, and to all subsequent releases and modifications until otherwise indicated in new editions.

© Copyright International Business Machines Corporation 2002, 2012.

US Government Users Restricted Rights -- Use, duplication or disclosure restricted by GSA ADP Schedule Contract with IBM Corp.

Contents

AccessProfile Features and Purpose.....1

 What is Web Auto Learn.....1

 Features of Web Auto Learn.....1

Supported Single Sign-On Workflows.....2

 Logon.....2

Caveats and Limitations.....3

 a. Successful Logon Not Detected.....3

 b. Saving Credentials Fired When User Navigates The Web Page.....3

 c. Forms With Multiple Fields Not Supported.....3

Notices.....4

Preface

Welcome to the Cookbook for *Web Auto-Learn* AccessProfile.

This cookbook provides an overview about the web auto learn AccessProfile. Topics covered include features, supported environments and workflows, caveats and limitations.

Note: IBM Security Access Manager for Enterprise Single Sign-On was formerly known as IBM Tivoli Access Manager for Enterprise Single Sign-On. When this document refers to IBM Security Access Manager for Enterprise Single Sign-On, the statement also includes IBM Tivoli Access Manager for Enterprise Single Sign-On, versions 8.0.1 and 8.1.

AccessProfile Features and Purpose

What is Web Auto Learn

The Web Auto-Learn AccessProfile is designed for Single Sign-On in a logon form for a web page. The Web Auto-Learn AccessProfile is not limited to a specific web page. The Web Auto-Learn AccessProfile also works for generic logon forms on web pages which contain one username and one password field.

Features of Web Auto Learn

Features of this AccessProfile are :

- Automatic capture of web credentials.
- Automatic sign-on to the web page using the captured credentials.
- Support for all languages listed in release notes.

The authentication service id is the domain derived from the URL. For example, for a web page with URL <http://www.ibm.com/xyz>, the authentication service id is www.ibm.com.

AccessProfile Name, Authentication Service Id, Data Template

Table 1: Profile Names, Authentication Service IDs and Data Templates

Profile Name (in AS)	Authentication Service	Data Template
sso_site_web_auto_learn	Indirect (URL)	adt_ciuser_cspwd

Table 2: Data Template Mapping

Data Template Item	Data Template Item Description	Application Field Name
ciuser	Case insensitive username	Username, with the following form element: <input type="text">
cspwd	Case sensitive password	Password, with the following form element: <input type="password">

Supported Single Sign-On Workflows

Logon

Figure 1 shows this use case. User visits a website that requires submitting credentials in a web page form.

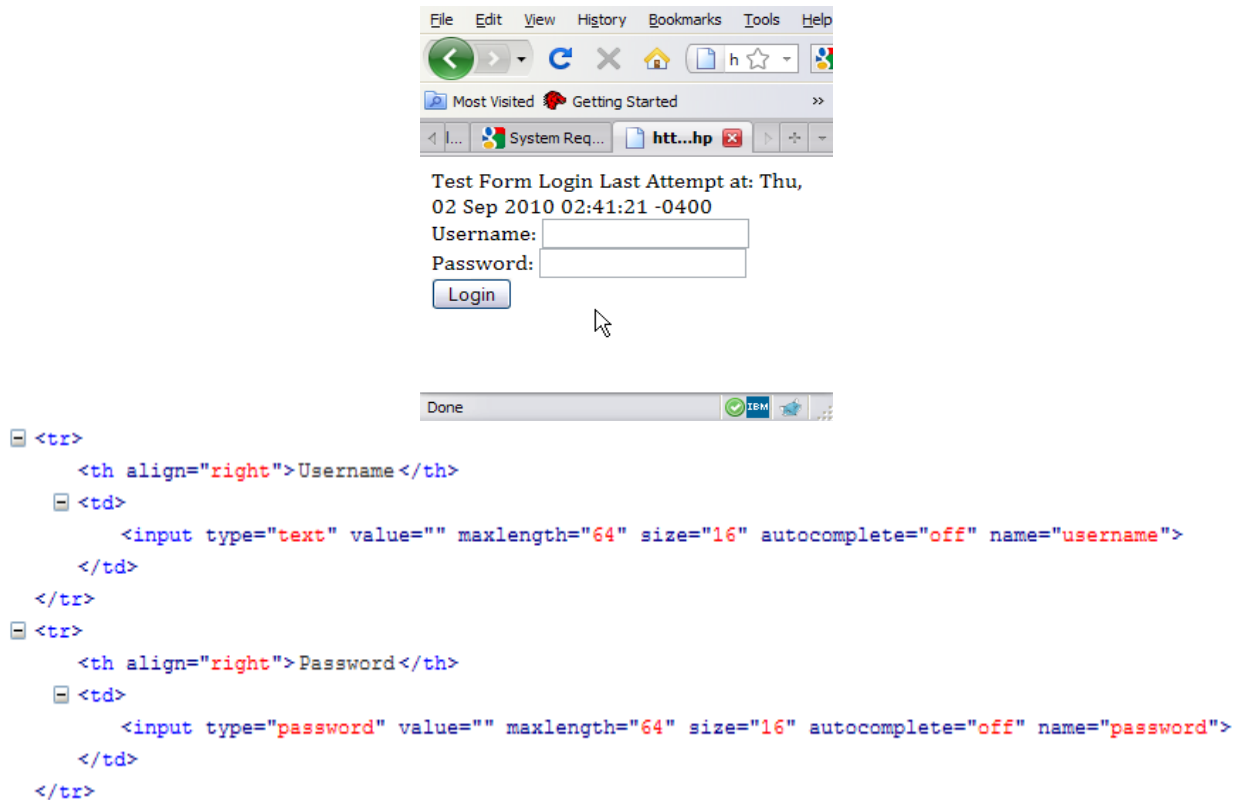


Figure 1: A web logon page and source code

By default, the Web Auto-Learn profile loads when AccessAgent detects the loading of a web page. Immediately after the profile loads, a VBScript is executed to check the number of username and password fields on this web page. If only one username field and one password field is found, the Single Sign-On workflow proceeds. Otherwise, the state machine returns to the start state, where there is no Single Sign-On workflow on this web page.

Figure 2 shows the workflow of the Web Auto-Learn AccessProfile. When the "Submit" button is clicked or the user navigates away from the web page, an AccessAgent dialog box (Figure 3) is displayed requesting the user to save the entered credentials.

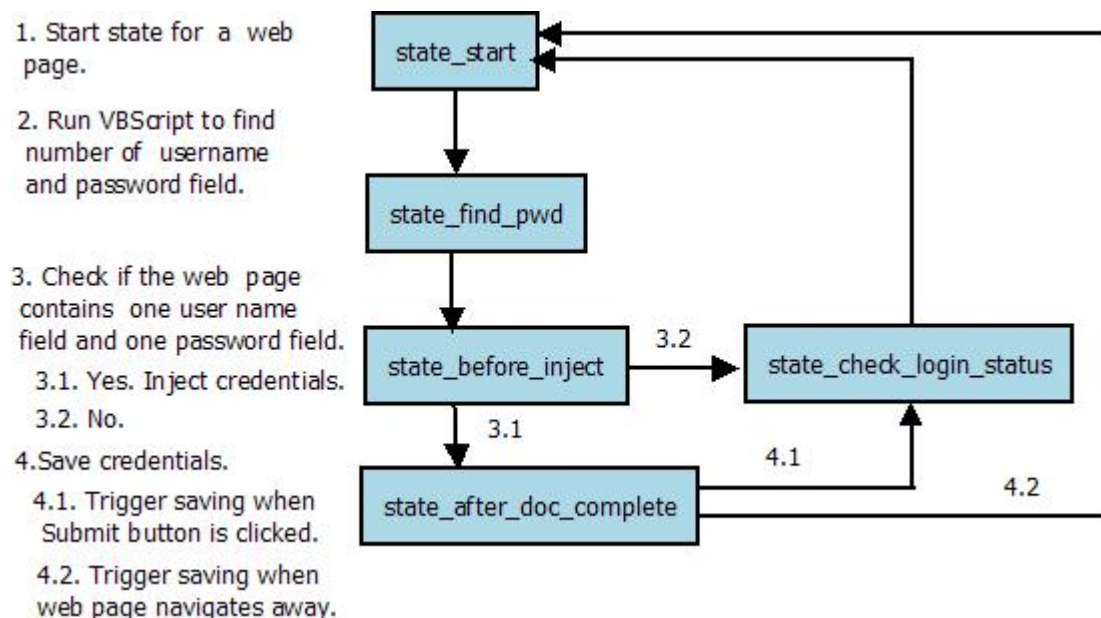


Figure 2: Flow chart of Web Auto-Learn AccessProfile

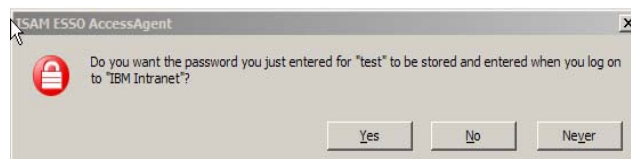


Figure 3: The AccessAgent dialog box that prompts the user to save credentials.

Caveats and Limitations

a. Successful Logon Not Detected

The profile does not detect the successful logon page. The user must determine whether they want to save entered credentials by providing input for the saved credential dialog box (See Figure 3).

b. Saving Credentials Fired When User Navigates The Web Page

The AccessAgent save credential dialog box is displayed when the user navigates away from a logon web page. An example of the user navigating away from the logon web page is when the user clicks a link, or navigates forward or backward with the browser button.

In some situations, the user does not perform a logon procedure and the dialog box appears unintentionally. However, this situation does not happen often. Saving is not successful if either user name or password is empty. Thus no AccessAgent save credential dialog box will show in this case.

c. Forms With Multiple Fields Not Supported

If the web page frame contains a form with more than one user name and one password field, the AccessAgent will not inject or capture the credentials.

Notices

This information was developed for products and services offered in the U.S.A. IBM® may not offer the products, services, or features discussed in this document in other countries. Consult your local IBM representative for information on the products and services currently available in your area. Any reference to an IBM product, program, or service is not intended to state or imply that only that IBM product, program, or service may be used. Any functionally equivalent product, program, or service that does not infringe any IBM intellectual property right may be used instead. However, it is the user's responsibility to evaluate and verify the operation of any non-IBM product, program, or service.

IBM may have patents or pending patent applications covering subject matter described in this document. The furnishing of this document does not give you any license to these patents. You can send license inquiries, in writing, to:

IBM Director of Licensing
IBM Corporation
North Castle Drive
Armonk, NY 10504-1785 U.S.A.

For license inquiries regarding double-byte (DBCS) information, contact the IBM Intellectual Property Department in your country or send inquiries, in writing, to:

Intellectual Property Licensing
Legal and Intellectual Property Law
IBM Japan, Ltd.
1623-14, Shimotsuruma, Yamato-shi
Kanagawa 242-8502 Japan

The following paragraph does not apply to the United Kingdom or any other country where such provisions are inconsistent with local law :

INTERNATIONAL BUSINESS MACHINES CORPORATION PROVIDES THIS PUBLICATION "AS IS" WITHOUT WARRANTY OF ANY KIND, EITHER EXPRESS OR IMPLIED, INCLUDING, BUT NOT LIMITED TO, THE IMPLIED WARRANTIES OF NON-INFRINGEMENT, MERCHANTABILITY OR FITNESS FOR A PARTICULAR PURPOSE.

Some states do not allow disclaimer of express or implied warranties in certain transactions, therefore, this statement might not apply to you.

This information could include technical inaccuracies or typographical errors. Changes are periodically made to the information herein; these changes will be incorporated in new editions of the publication. IBM may make improvements and/or changes in the product(s) and/or the program(s) described in this publication at any time without notice.

Any references in this information to non-IBM Web sites are provided for convenience only and do not in any manner serve as an endorsement of those Web sites. The materials at those Web sites are not part of the materials for this IBM product and use of those Web sites is at your own risk.

4 IBM Security Access Manager for Enterprise Single Sign-On

IBM may use or distribute any of the information you supply in any way it believes appropriate without incurring any obligation to you.

Licensees of this program who wish to have information about it for the purpose of enabling: (i) the exchange of information between independently created programs and other programs (including this one) and (ii) the mutual use of the information which has been exchanged, should contact:

IBM Corporation
2Z4A/101
11400 Burnet Road
Austin, TX 78758 U.S.A.

Such information may be available, subject to appropriate terms and conditions, including in some cases payment of a fee.

The licensed program described in this document and all licensed material available for it are provided by IBM under terms of the IBM Customer Agreement, IBM International Program License Agreement or any equivalent agreement between us.

Any performance data contained herein was determined in a controlled environment. Therefore, the results obtained in other operating environments may vary significantly. Some measurements may have been made on development-level systems and there is no guarantee that these measurements will be the same on generally available systems. Furthermore, some measurement may have been estimated through extrapolation. Actual results may vary. Users of this document should verify the applicable data for their specific environment.

Information concerning non-IBM products was obtained from the suppliers of those products, their published announcements or other publicly available sources. IBM has not tested those products and cannot confirm the accuracy of performance, compatibility or any other claims related to non-IBM products. Questions on the capabilities of non-IBM products should be addressed to the suppliers of those products.

All statements regarding IBM's future direction or intent are subject to change or withdrawal without notice, and represent goals and objectives only.

All IBM prices shown are IBM's suggested retail prices, are current and are subject to change without notice. Dealer prices may vary.

This information is for planning purposes only. The information herein is subject to change before the products described become available.

This information contains examples of data and reports used in daily business operations. To illustrate them as completely as possible, the examples include the names of individuals, companies, brands, and products. All of these names are fictitious and any similarity to the names and addresses used by an actual business enterprise is entirely coincidental.

COPYRIGHT LICENSE:

This information contains sample application programs in source language, which illustrate programming techniques on various operating platforms. You may copy, modify, and distribute these sample programs in any form without payment to IBM, for the purposes of developing, using, marketing or distributing application programs conforming to the application programming interface for the operating platform for which the sample programs are written. These examples have not been thoroughly tested under all conditions. IBM, therefore, cannot guarantee or imply reliability, serviceability, or function of these programs. You may copy, modify, and distribute these sample programs in any form without payment to IBM for the purposes of developing, using, marketing, or distributing application programs conforming to IBM's application programming interfaces.

If you are viewing this information in softcopy form, the photographs and color illustrations might not be displayed.

Trademarks

IBM, the IBM logo, and ibm.com® are trademarks or registered trademarks of International Business Machines Corp., registered in many jurisdictions worldwide. Other product and service names might be trademarks of IBM or other companies. A current list of IBM trademarks is available on the Web at Copyright and trademark information; at www.ibm.com/legal/copytrade.shtml.

Adobe, Acrobat, PostScript and all Adobe-based trademarks are either registered trademarks or trademarks of Adobe Systems Incorporated in the United States, other countries, or both.

IT Infrastructure Library is a registered trademark of the Central Computer and Telecommunications Agency which is now part of the Office of Government Commerce.

Intel, Intel logo, Intel Inside, Intel Inside logo, Intel Centrino, Intel Centrino logo, Celeron, Intel Xeon, Intel SpeedStep, Itanium, and Pentium are trademarks or registered trademarks of Intel Corporation or its subsidiaries in the United States and other countries.

Linux is a trademark of Linus Torvalds in the United States, other countries, or both.

Microsoft, Windows, Windows NT, and the Windows logo are trademarks of Microsoft Corporation in the United States, other countries, or both.

ITIL is a registered trademark, and a registered community trademark of the Office of Government Commerce, and is registered in the U.S. Patent and Trademark Office.

UNIX is a registered trademark of The Open Group in the United States and other countries.



Java and all Java-based trademarks and logos are trademarks or registered trademarks of Oracle and/or its affiliates.

Cell Broadband Engine is a trademark of Sony Computer Entertainment, Inc. in the United States, other countries, or both and is used under license therefrom.

Linear Tape-Open, LTO, the LTO Logo, Ultrium, and the Ultrium logo are trademarks of HP, IBM Corp. and

Quantum in the U.S. and other countries.

Other company, product, and service names may be trademarks or service marks of others.