

Bo Batty – Product Designer / Architect

6 September, 2012

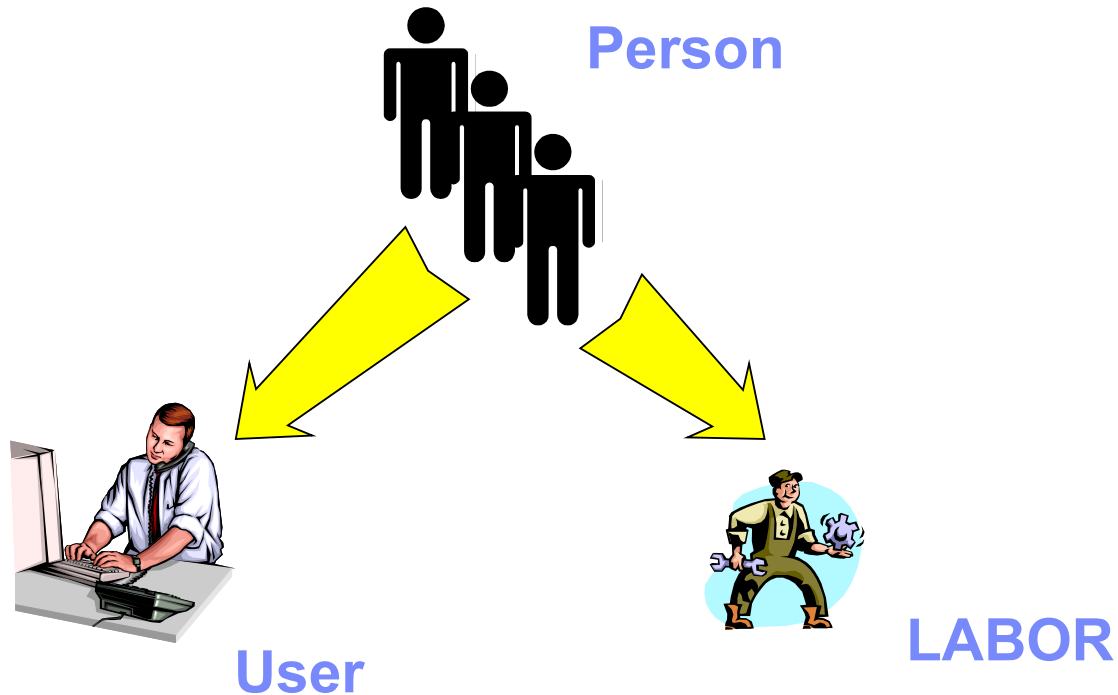


Labor, Crafts, and Qualifications



- Labor vs. People
- Multiple Skill Levels for a Craft
- Multiple Crafts and Skill Levels for a Labor
- Labor Rate Contracts
- Qualifications and Certifications
- Premium Pay Changes for Maximo 7.5

- Simplify Interfaces to HR / Personnel systems



- Crafts, Skills

- 3 x 3 Labor Matrix – Multiple Skills and Rates

- Multiple Labor Contracts with Different Rates

- Certifications

- Nuclear / Utility / Transportation Requirement

- Labor Can Have Multiple Crafts, Skill Levels
 - Different Rates on a Work Order – Depending on which Craft/Skill Level is Used
 - **No need to adjust Rate on Labor Reporting**
- More Flexibility for Premium Pay
 - Premium Pay Definitions and Rates
 - Global
 - Defined for the Craft
 - Defined for the Contract Labor *** New for Maximo 7.5**
 - **Eliminate Errors / Simplify Data Entry**
 - Multiple Premium Rate Types
 - Multiplier
 - Increment
 - Hourly
 - **Flexibility to Use Premium Pay for non-Overtime situations**
 - **Special Skills / Hazardous Work / Away from Home Assignments**
- The Same Outside Labor may be Supplied by Different Suppliers under Different Contracts for Different Rates

- Labor Rate Contract
 - Associate Crafts and Skill Levels with Vendor / Contract
 - Specify Rates for each Craft and Skill Level
 - **Specify Premium Rates ** New for Maximo 7.5 ****
 - Associate Specific Labor with Contract
 - **Better Control over negotiated rates**

- Full Status and Revision Control
 - Associate Crafts and Update Rates only if Status = DRAFT, PNDREV, WAPPR
 - Associate Labor only if Status = APPR
 - **Simplifies the management of Price Changes**

- Barbara is a Journeyman Welder, a Master Electrician, is CPR Certified, and has a Certification to Weld 7018 Wire.
- Jim holds a Senior Reactor Operator License
- Pete holds the following Certificates
 - Cisco Certified Internetwork Expert
 - Microsoft Certified Systems Engineer
 - Certified Linux Engineer

- Labor Qualifications
 - General, or Craft-related, or Craft Skill Level-related
 - May or May not require Certification

- Tools may Require Qualifications for their Use

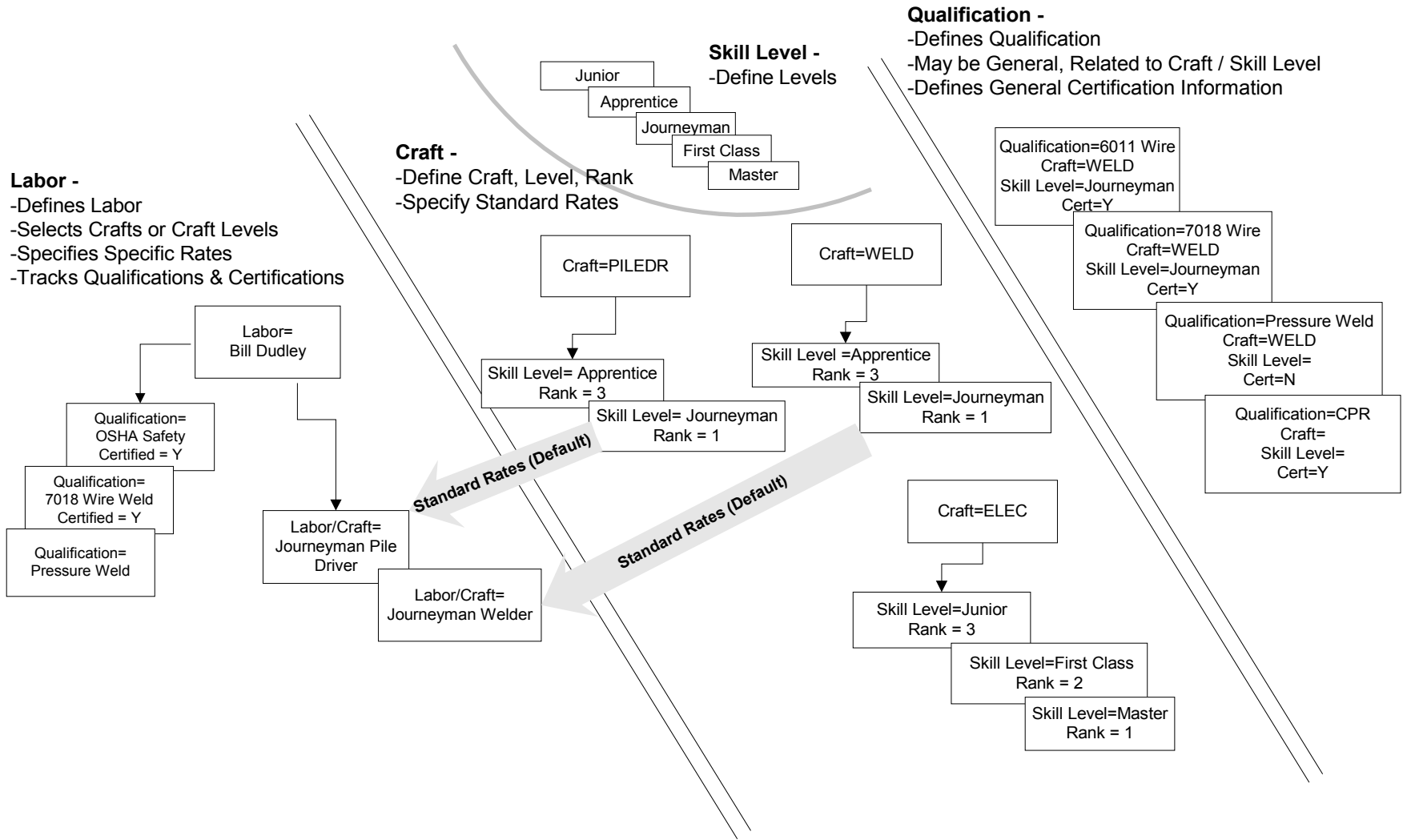


- Complete picture of the Labor
 - Craft and Level of skill
 - Qualifications and Certificates

- Certificate Expiration Dates and Escalation Manger
 - Notifications to Labor and Training Manager

- Skill Level
 - Operative word is LEVEL
 - Years of Experience
 - Amount of General Training
 - Seniority within Craft
 - Level of Pay
- Examples:
 - First Class
 - Second Class
 - Third Class

 - Apprentice
 - Journeyman
 - Master
- Qualification
 - Specific area of Knowledge or Training
 - Often required independent evaluation or testing
 - Usually associated with a Certificate or License
- Examples
 - Senior Reactor Operator License
 - Cisco Certified Network Engineer
 - Airman Certificate – Power Endorsement

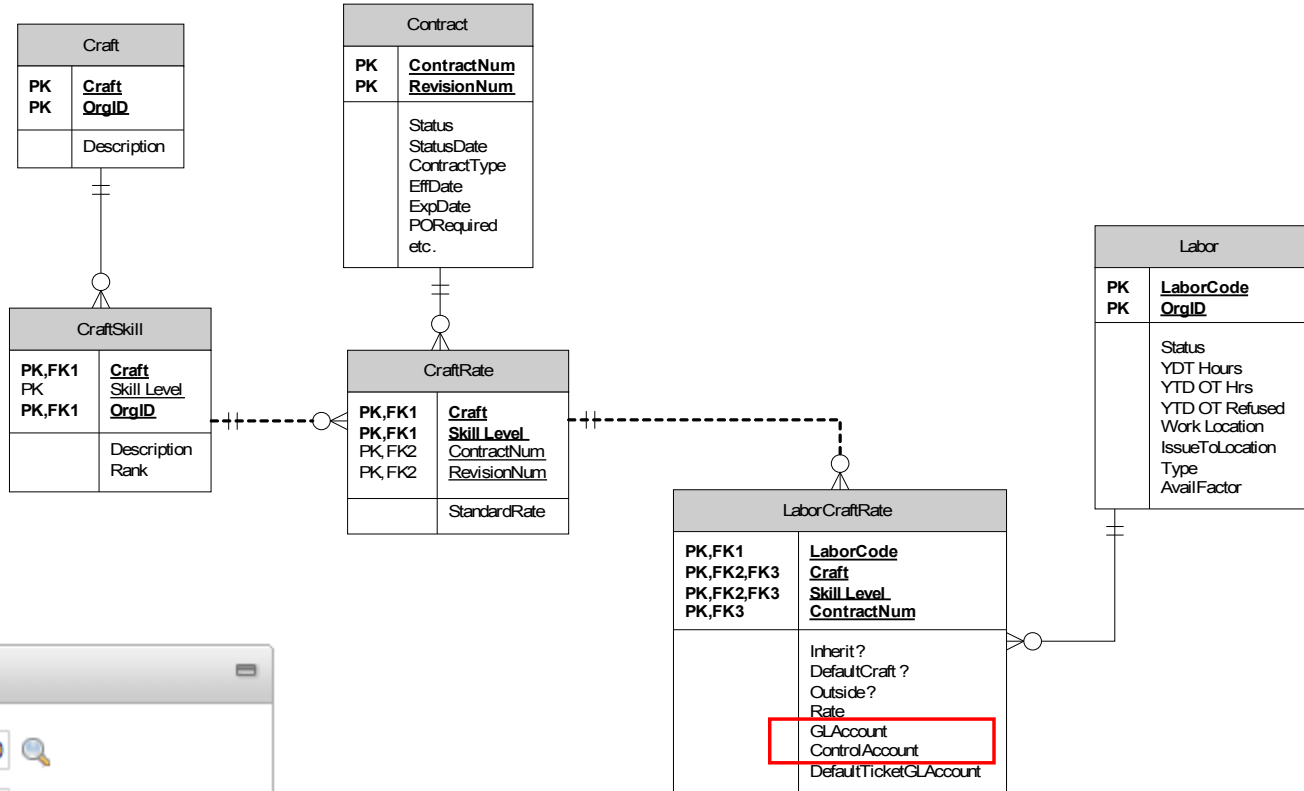


Demonstration

- Skill Level (ALN Domain)
- Create Craft
- Establish Rates – Internal and External
 - Premium Pay Codes
- Labor Rate Contract
 - Premium Pay Codes
- Create Qualification
- Create Person
- Create Labor
- Report Labor

- GL Accounts and Control Accounts
 - GL Account – Where the Cost goes
 - Control Account – Offset of the Cost

- Uniqueness of Person's email



GL Account

Labor Resource Codes

Internal: 🔍

External: 🔍

External Labor Control Accounts

Organization:

Vendors Filter > 1 - 7 of 7 Download

Vendor	Description	Control Account
▶ BEARING	Bearings, Inc	6810-700-600
▶ BEX	Bex Pneumatic Systems	6810-700-600
▶ BURSAW	Bursaw Oil Co.	6810-700-600
▶ CMC	Changeover Management Company	6810-700-600
▶ EMI	Emergency Maintenance Inc.	6810-700-600
▶ HELWIG	Helwig Company	6810-700-600
▶ WB	White & Bagley	6810-700-600

New Row

OK Cancel

Control Account – Internal Labor Cost offset



List Labor Crafts Qualifications Map

Labor: DUDLEY

* Person: DUDLEY >>

Work Site: BEDFORD Bedford MA Site of EAGLE Inc. North America

Work Location: BR200 HVAC System- Main Office

Labor Inventory Site: >>

Labor Inventory Location: >>

List Location Assets History Safety Meters Specifications Service Address Map

Location: BR200 HVAC System- Main Office

* Type: OPERATING

Rotating Item: >>

Meter Group: >>

Calendar: COMPANY1

Site: BEDFORD

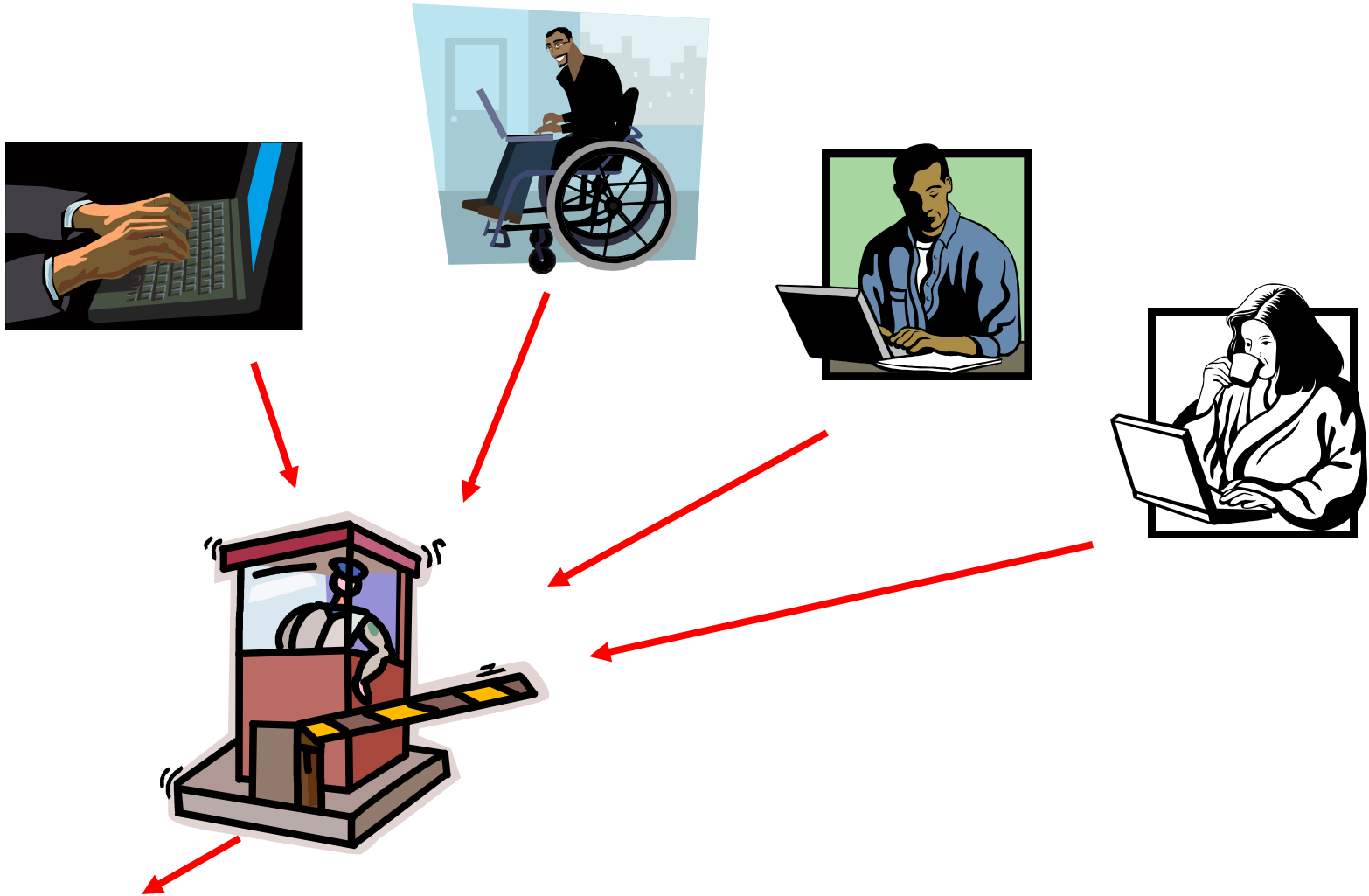
Priority: 1

Failure Class: BLDGS >>

GL Account: 6210-323-???

Internal Labor Account: 6200-300-300

Email Listener



Maximo