



IBM Software Group

# Project Management Certification Overview

---

Alexandre da Silva

September 30, 2011



# Introduction

- What is a project?
  - ▶ *A temporary undertaking that has a defined start and finish date with specified scope and deliverables to produce a unique product or service*
  
- Discuss what is, why and how to obtain Project Management Certification
  
- 2 types of Certification discussed
  - ▶ Project Management Professional Certification (a.k.a “PMI Certification”)
  - ▶ IBM Project Management Certification

# What is Project Management Professional Certification?

- Credential issued by the Project Management Institute (PMI)
- PMI's Project Management Professional (PMP)<sup>®</sup> credential is the most important industry-recognized certification for project managers
- Globally recognized and demanded, the PMP<sup>®</sup> demonstrates that you have the experience, education and competency to successfully lead and direct projects.

# What is IBM Project Management Certification?

- IBM's project management profession has established an end-to-end process to "quality assure" progress through the project management career path.
- This process is called "validation" and it is executed within the IBM Career*Smart* Framework.
- This process provides the project management professional with criteria that is recognized as a worldwide cross-industry professional achievement and criteria that demonstrates IBM-specific skills.

## Why to become a Certified Project Manager?

- Becoming certified (both PMP or IBM Certified Project Manager) is public recognition of achieving a significant career milestone and demonstrating expertise in the profession
- Develop critical skills (for example, planning, executing, and controlling) that are applicable to personal as well as professional activities
- Increase choice of assignments and opportunities
- You have increased marketability in the external job force. The availability of qualified project management professionals is becoming increasingly important to our customers and is often a key IBM differentiator.

# How to obtain PMP Certification?

- Get approval from your manager
- Become a PMI member ([www.pmi.org](http://www.pmi.org))
- Review the PMI eligibility criteria
  - A four-year degree (bachelor's or the global equivalent) and at least three years of project management experience, with 4,500 hours leading and directing projects and 35 hours of project management education.
  - OR**
  - A secondary diploma (high school or the global equivalent) with at least five years of project management experience, with 7,500 hours leading and directing projects and 35 hours of project management education.

[http://www.pmi.org/Certification/~/\\_media/PDF/Certifications/pdc\\_pmphandbook.ashx](http://www.pmi.org/Certification/~/_media/PDF/Certifications/pdc_pmphandbook.ashx)

- Study for PMI exam
- Take and pass the PMI Exam
- **Plan ahead – this process can take several months**
  - ▶ 4 to 6 months realistic or even more if you have not completed the eligibility criteria

## How to study for the PMI exam?

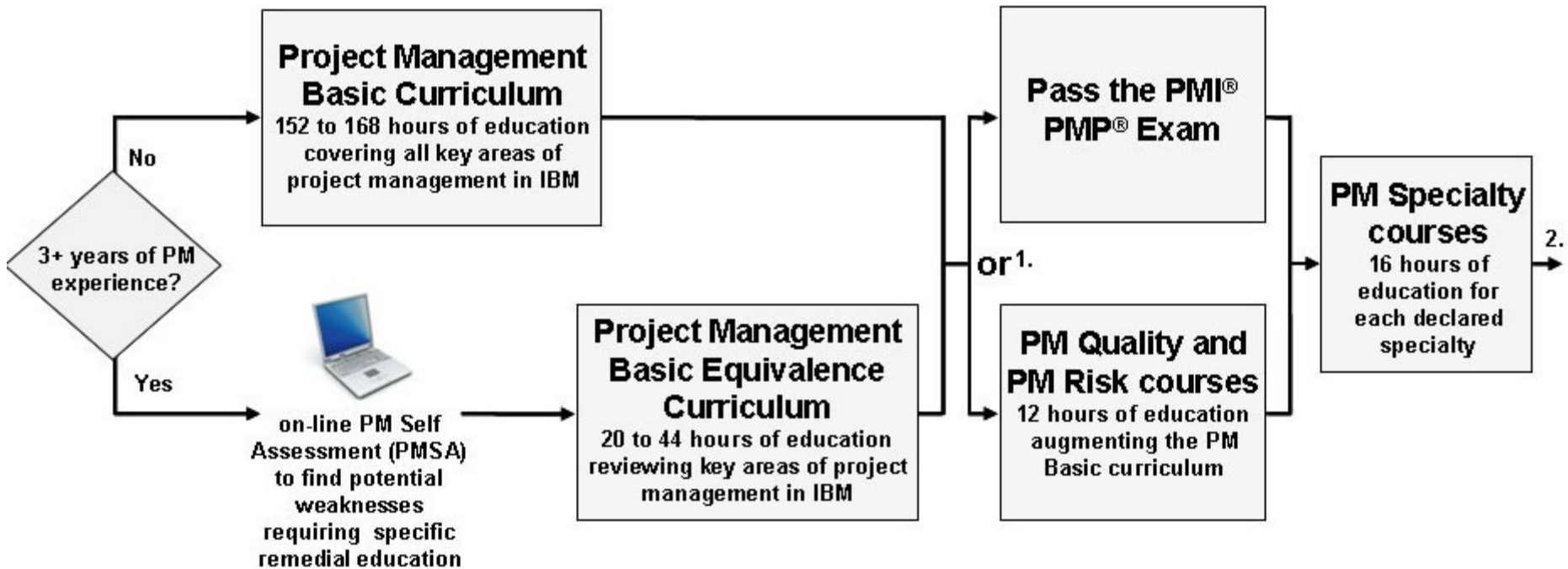
- Read the PMBOK (at least twice!!)
  - Join a PMI study group in IBM
    - ▶ <https://w3.tap.ibm.com/w3ki2/display/GBSPMI/Home>
  - IBM Books 24X7 - <http://www.books24x7.com>
    - ▶ Search PMI Exam Prep
  - Learning @ IBM website
    - ▶ E-learning courses based on PMBOK 4<sup>th</sup> edition  
[http://w3-03.ibm.com/transform/project/education/pmbok\\_elearning.pdf](http://w3-03.ibm.com/transform/project/education/pmbok_elearning.pdf)
    - ▶ PMPPROJ01 – free sample test questions
    - ▶ PM35G - PMP® Exam Prep Intensive Workshop - A 4 day intensive course designed to assist you pass the exam on the 5<sup>th</sup> day
- Note:** there are special prerequisites for this course

# How to become an IBM Certified Project Manager?

- Complete PM Basic Education
- Obtain your PMP credential
- Declare your Specialty and complete 16 hours specialty education
- Review the criteria (different criteria for Senior and Executive Project Management certification)
- Complete your package
- Package acceptance
- Interview
- **Plan ahead – this process can take several months**
  - ▶ Completing the package is labor intensive and requires several hours of work
  - ▶ Make sure you know the deadlines for quarterly reviews so you can plan accordingly

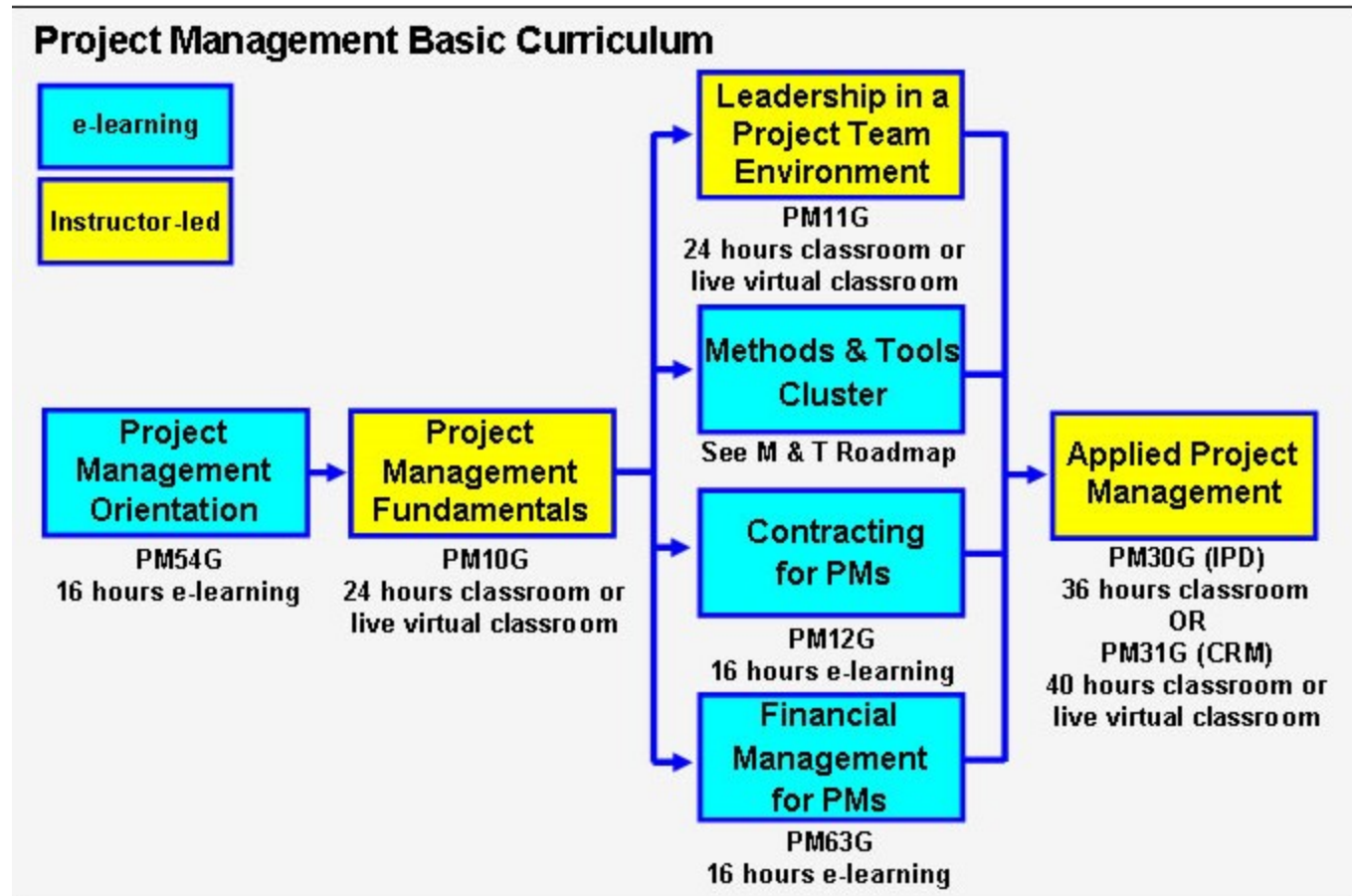


# Project Management Certification Roadmap Overview



1. Passing the PMP exam is the preferred path. Check with your project management profession leader for eligibility to take the alternate path to IBM PM certification in lieu of the PMP exam.
2. 20 hours of currency education applies to candidates that completed their Basic Education or Equivalency more than more than 36 months prior to package submission. Please see Section 3.2.2.4 in the Managing Projects and Programs Capability Guide for more details on currency education requirements

# Project Management Basic Education Roadmap



# References

- How to study and pass the PMI exam?
  - ▶ PMKN eShareNet presented by Karen Sim – deep dive in PMI certification exam
  
- How to become an IBM Certified Project Manager?
  - ▶ PMKN eShareNet presented by Karen Sim – deep dive in IBM Project Management Certification process
  
- Project Management Center of Excellence
  - ▶ [http://w3-03.ibm.com/transform/project/home\\_0301.html](http://w3-03.ibm.com/transform/project/home_0301.html)
  
- Project Management Institute
  - ▶ <http://www.pmi.org>
  
- IBM Project Management Profession – Managing Project and Programs Capability Guide
  - ▶ [http://submit.boulder.ibm.com/pmtoolsuite/certification/pm\\_mpp\\_guide\\_062011.pdf](http://submit.boulder.ibm.com/pmtoolsuite/certification/pm_mpp_guide_062011.pdf)



IBM Software Group

# Questions?

