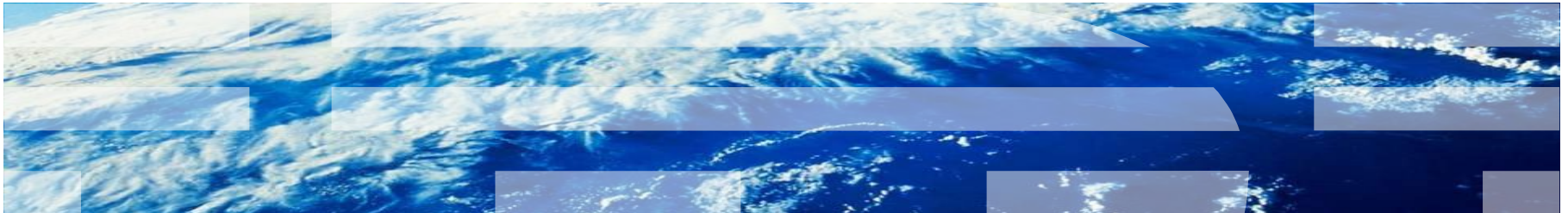

Tivoli Application Dependency Discovery Manager

TADDM v7.2.1 Overview

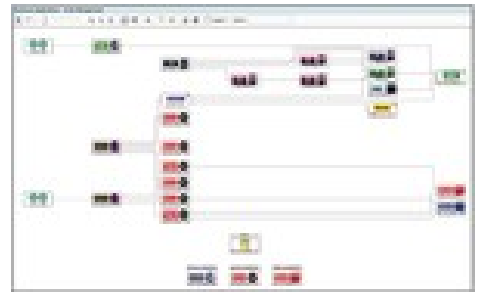
James Moore
Product Manager,
Tivoli Application Dependency Discovery Manager

jdmooore@us.ibm.com



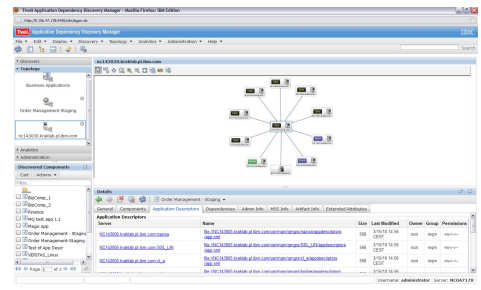
Universal Discovery Engine

Discovers configuration items and their Actual State. Includes Topology Views and the ability to **discover relationships** between items. **Name Reconciliation And Normalization** of data



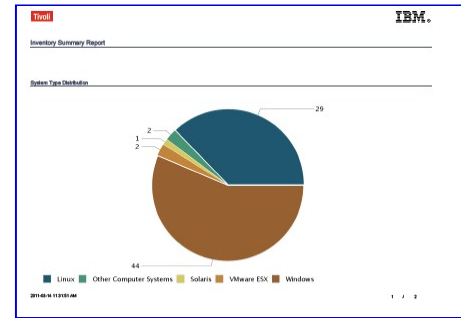
Application Dependency Mapping

Customer can understand what they have through agent-less **discovery of interdependencies** between applications, middleware, servers and network components and automated application maps



Configuration Auditing

Shows how configuration items are configured and changing over time by capturing the configuration of each CI, tracking changes to it and providing analytics to report on the **history of these configuration changes** over time

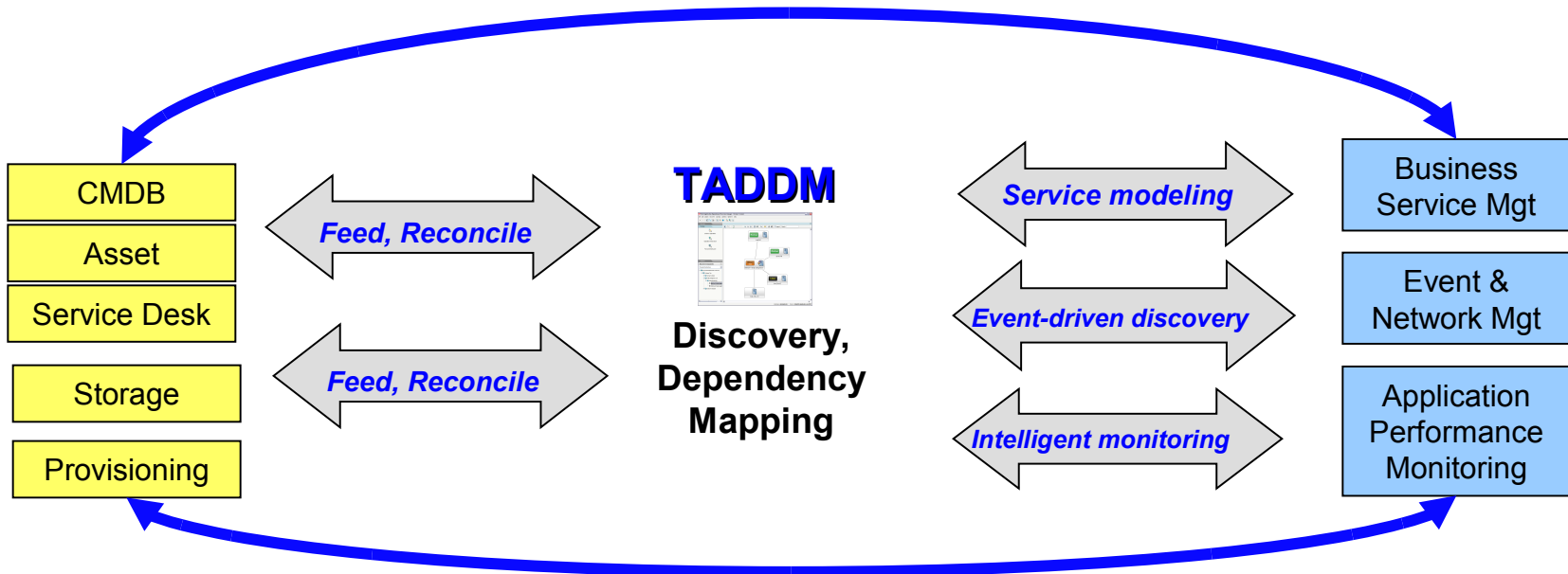


Compliance

Determines if configuration items are compliant by using the capability to compare discovered configuration of CIs to a "reference configuration" and determine the variations that define violations to local policy

TADDM provides visibility to what is in your infrastructure, how it is configured, and how it is changing over time.

Drives Key Automation Value



TADDM: integral driver for asset and change management, provisioning

TADDM: integral driver for operational efficiency projects

Common customer approaches:

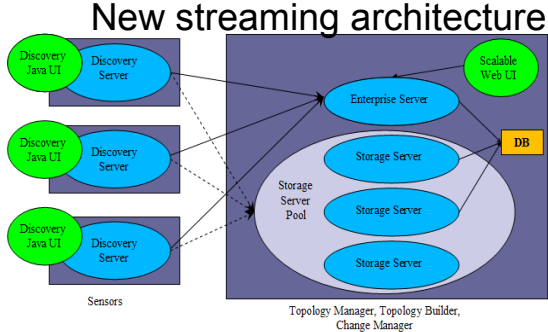
1. Configuration mgt, change mgt driven discovery
2. Asset mgt reconciliation
3. Storage discovery, support storage mgt tools

Common customer approaches:

1. Prerequisite to Data Center Consolidation: bring order to chaos
2. Intelligent monitoring and management
3. Automating business service and application modeling

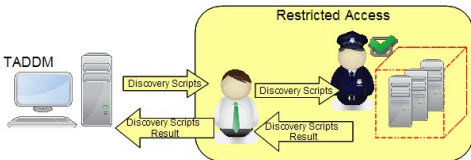
Most Valuable New TADDM v7.2.1 Features Cited in 2011 Deployments

- **Performance and scalability:**
 - New streaming architecture



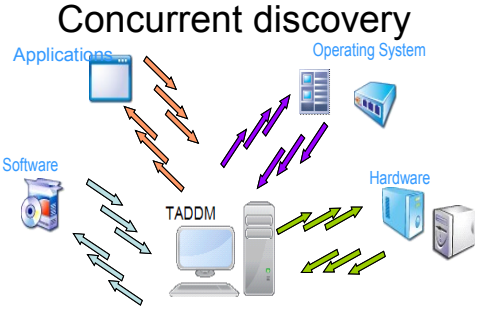
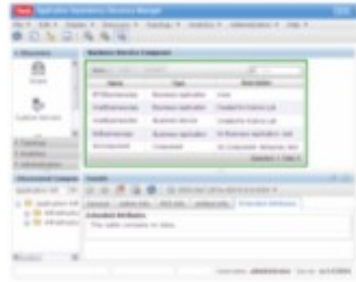
- **New discovery capabilities:**
 - Script-based discovery
 - Asynchronous discovery
 - Concurrent targeted discovery

Credential-leverage discovery



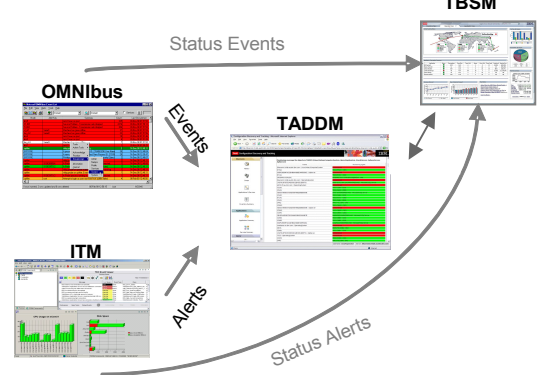
- **New business application grouping composer:**
 - Simplifies business application definition and discovery collection
 - Based on user-specified criteria

Grouping Composer



- **Enhanced interoperability:**
 - Improved TBSM Integration;
 - Proactive discovery
 - TWS discovery scheduling

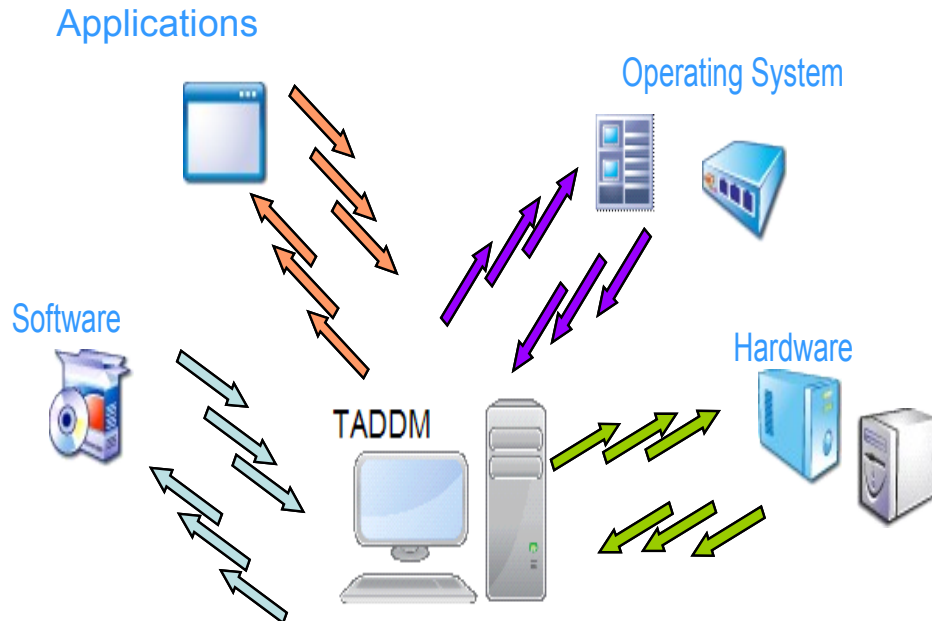
Enhanced Interoperability



- **Enhanced UI and Reporting:**
 - Quickly create custom reports

➤ Concurrent Discovery:

- Run multiple discovery jobs supported on a single discovery server.
 - allows for targeted small scope refreshes in parallel to scheduled long running discoveries.



***Benefits: Improved discovery efficiency and scalability
Added flexibility to run targeted discovery runs as needed***

Script-based discovery

Discovery script:

- Provided by sensor
- Run against target system instead of running individual commands
- Same script can be used for asynchronous discovery

Script-based discovery can be enabled:

- Individually for a specific sensor (via sensor configuration property)
- Globally for all script-based sensors
- For a specific discovery profile

For script-based application sensors:

- Application specific protocols are not used
- Application specific credentials might not be needed

You can use script-based discovery with discovery using ITM

Not all sensors support script-based discovery

TADDM 721 - Script based sensors

AixComputerSystemSensor

ApacheServerSensor

Db2Sensor

DominolInitialSensor

GenericServerSensor

LinuxComputerSystemSensor

MQServerSensor

OperatingSystemUtilizationSensor

OracleSensor

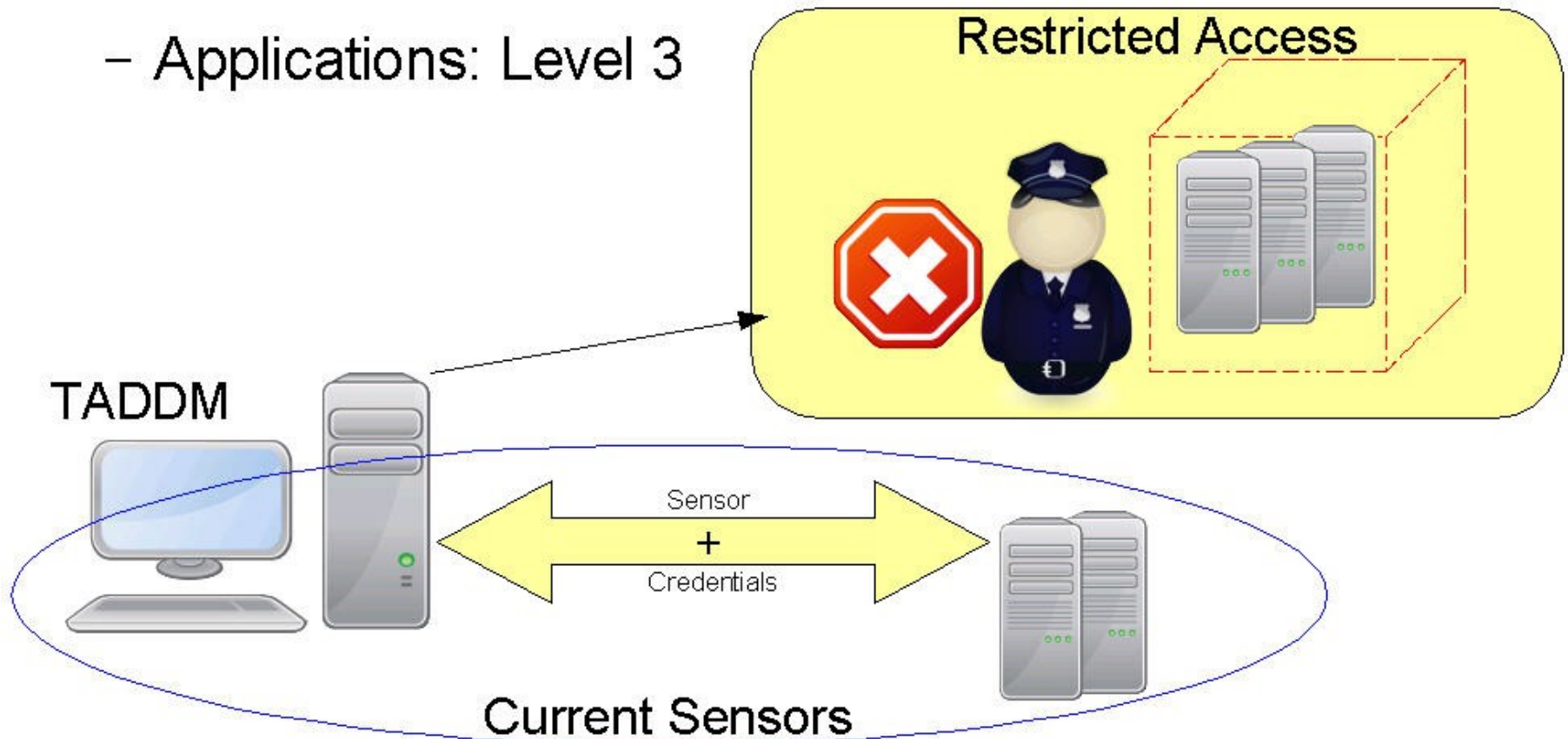
SunSparcComputerSystemSensor

WebLogicLauncherSensor

WebSphereVersionSensor

Introduction

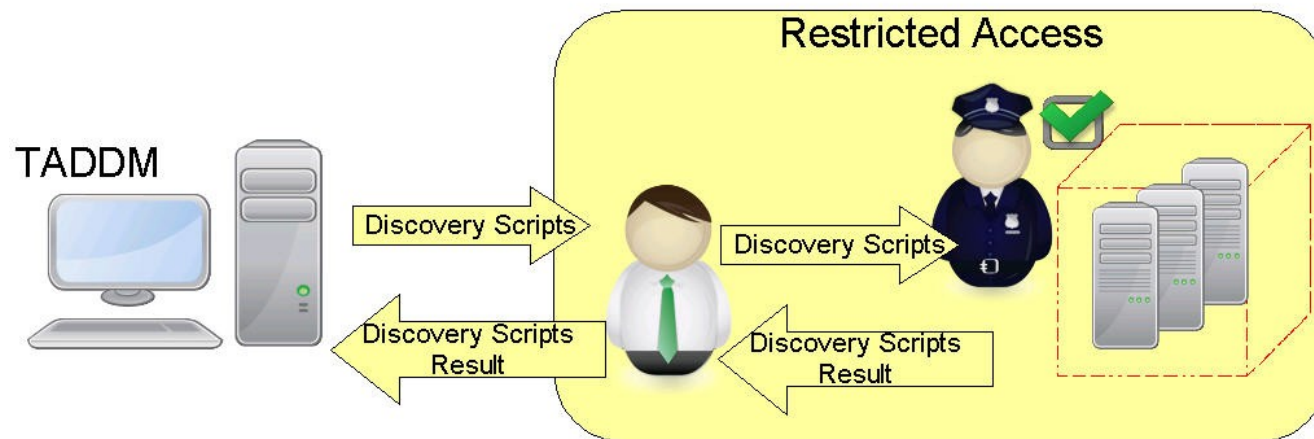
- **Current Sensors -> Credentials:**
 - Computer System: Level 2
 - Applications: Level 3



Asynchronous Discovery

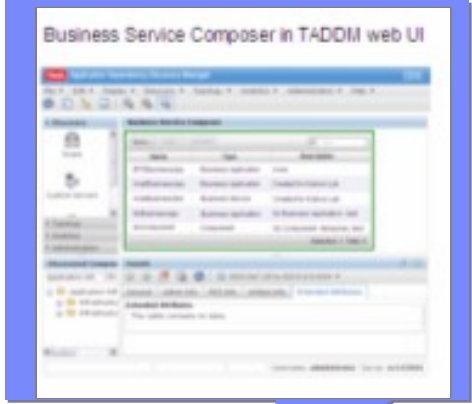
- Manual script discovery for systems that TADDM cannot access.
- Automatic script deployment and results retrieval with L2 credentials leveraged for L3 sensors

- Retrieve the script(s) to run from TADDM server
- Put results in TADDM server



Provides flexibility to run discovery scans leveraging existing middleware credentials and access control parameters

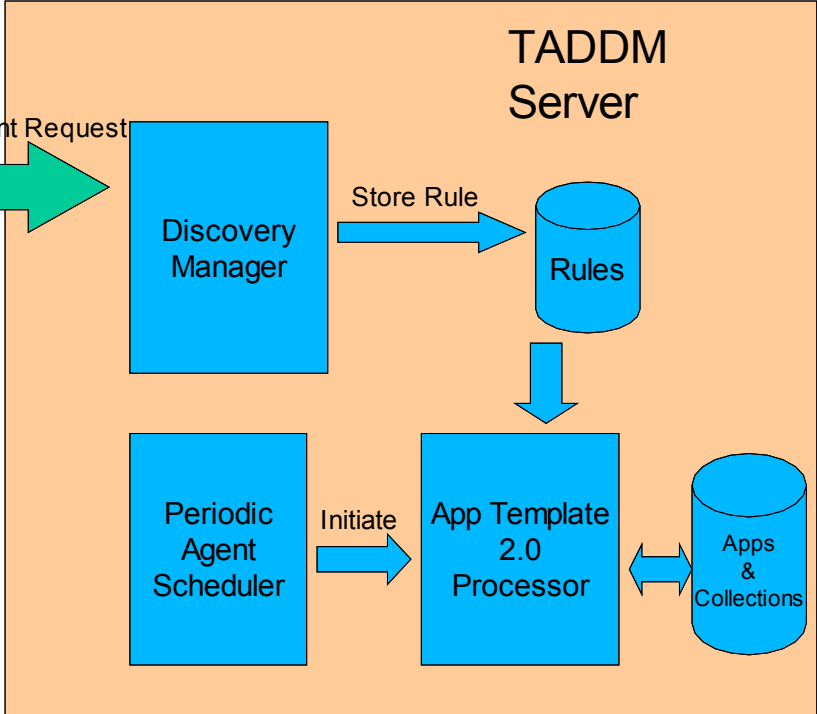
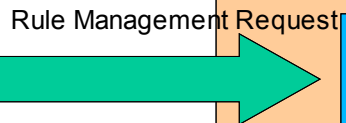
Grouping Composer



- Business Applications or Collections based on user specified criteria.
- All rules will exist on the TADDM Server. No files will need to be deployed to the Target Server.
- Ability to manage Business Applications in the TADDM Data Management Portal



TADDM Web Console



More flexibility, ease of use and less maintenance when creating application definitions

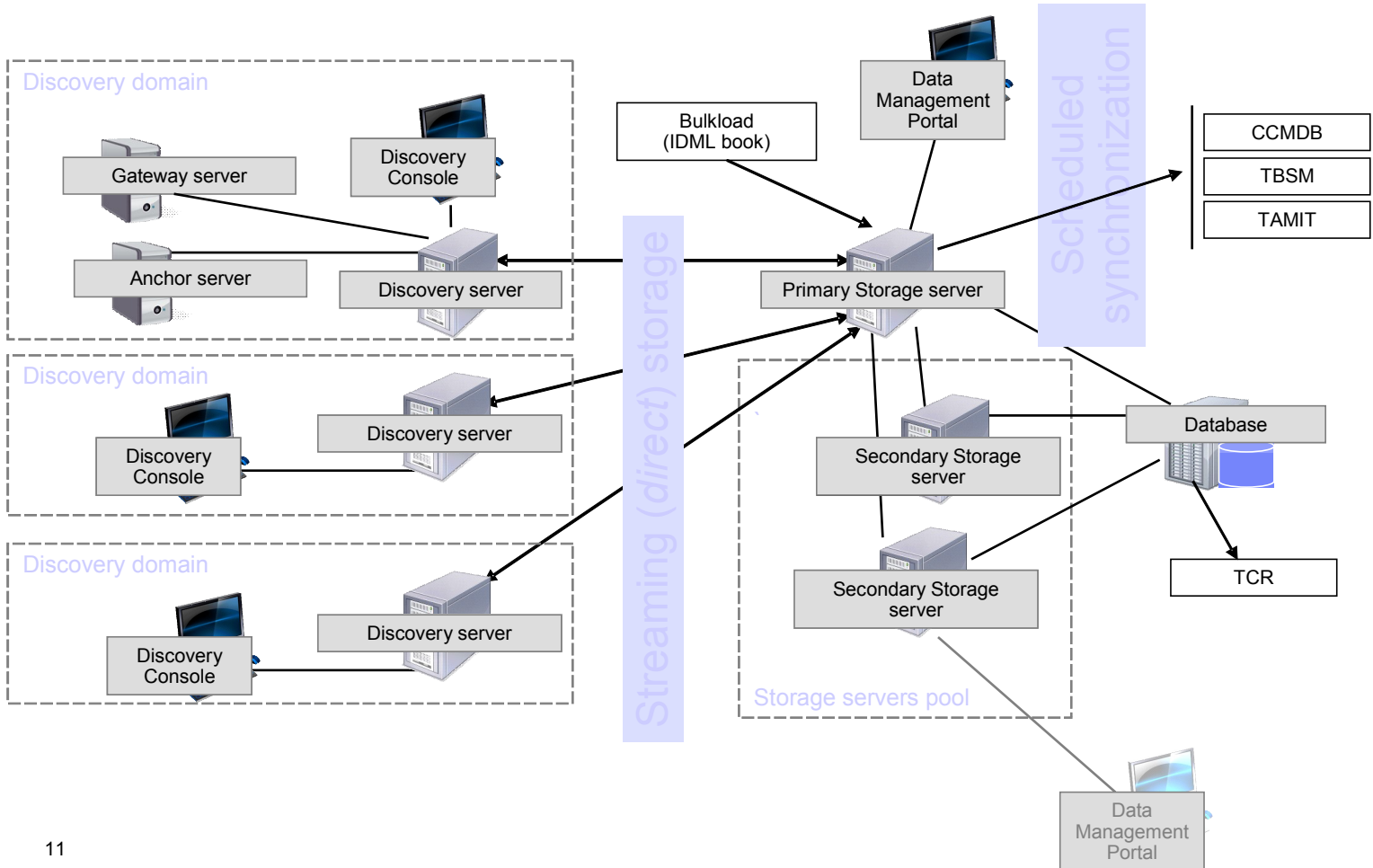
Steps:

- Rule is created
- Processor is started periodically
- Apps/Collections created based on rules

Streaming mode – Redesigned Architecture

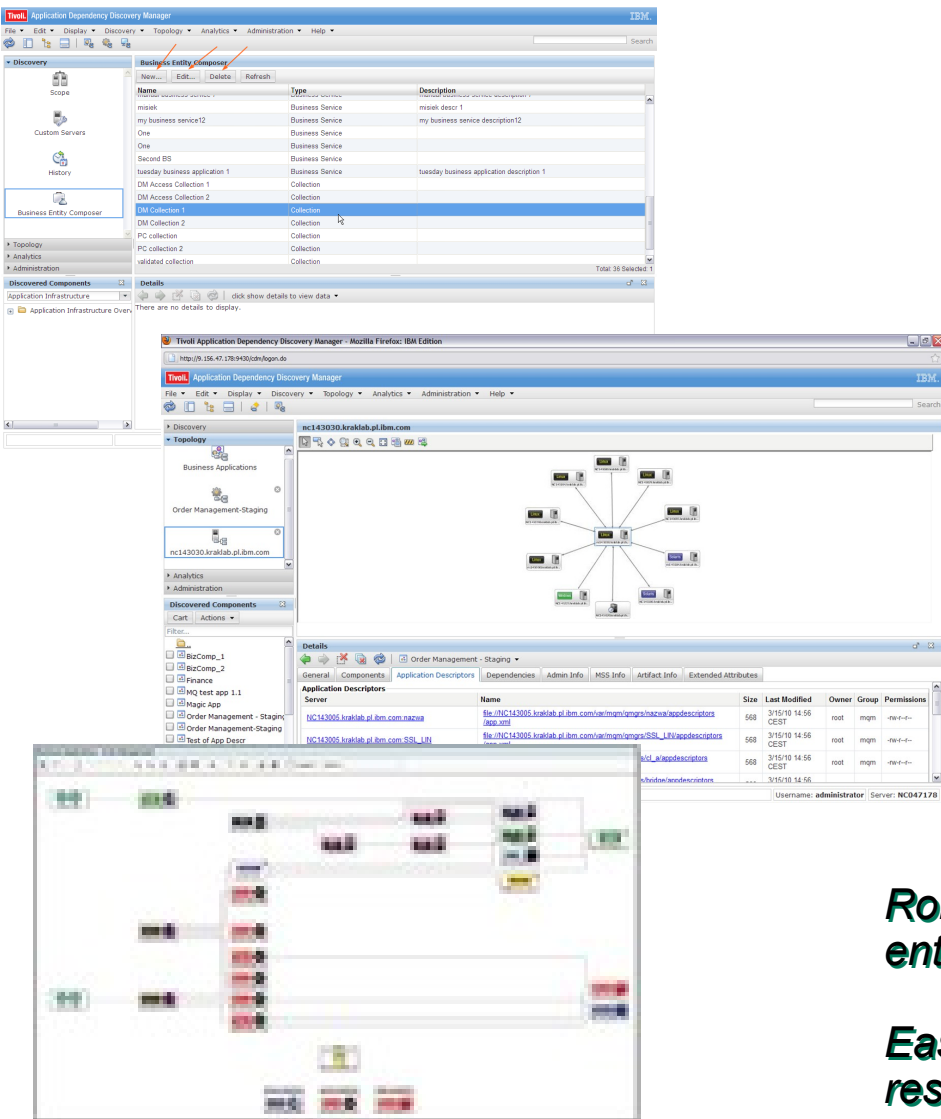
Efficient many-to-one, streamlined data flow

- Multiple discovery domains feed into single primary storage server
 - Only the primary storage server has a database
- Discovery server sends data to the storage server
- Storage server processes and stores the data



- **Eliminates sync time (latency)**
- **Data available as soon as it is discovered**
- **Eliminates domain databases for lower TCO (reduced hardware, DBAs, support)**

Visualization and UI Enhancements



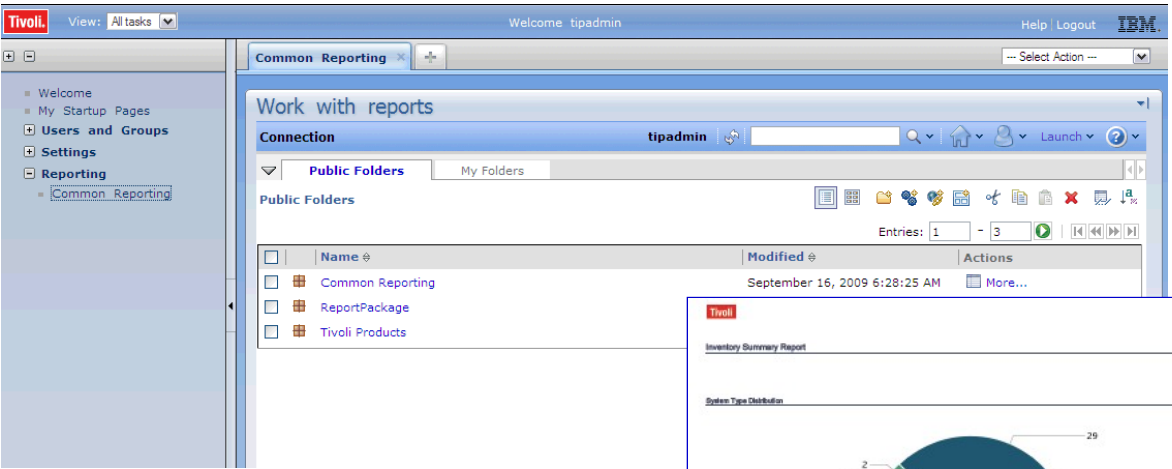
- **New Discovery Browser (Navigation)**
 - Replacement for Navigation Tree
- **Custom Query Builder**
- **Secure connections to domains**
- **Enterprise Server – status**
- **Ported from product console**
 - Component Management
 - Add, Edit, Delete CI
 - Merge Components
 - Logical Topology
 - Unknown servers
 - Dormant Components

Robust and extendable way to manage business entities from a single point in the UI

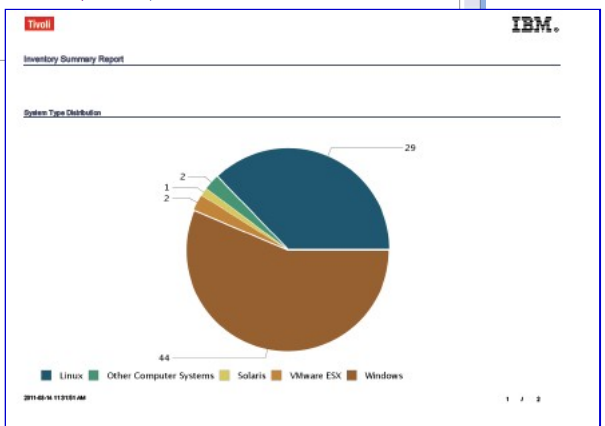
Ease of use to view custom queries and their results in the discovery browser

Enhanced Out-of-the-box and Custom Reporting

- Expanded library of out-of-the-box reports
- Quickly and easily create custom reports
- Support for Tivoli Common Reporting/Cognos:
 - provides a centralized approach to viewing and administering reports with a consistent look and feel across multiple products
 - includes a data store for storing and organizing reports, and interfaces for managing, running, scheduling, and viewing reports. Tivoli Common Reporting uses the BIRT runtime engine
- Generate Cognos® 8 Business Intelligence Reports
 - Intelligence reports, including inventory reports, WebSphere-specific reports, and reports that show business applications and their members
- Data Dictionary describing what data is available in TADDM.

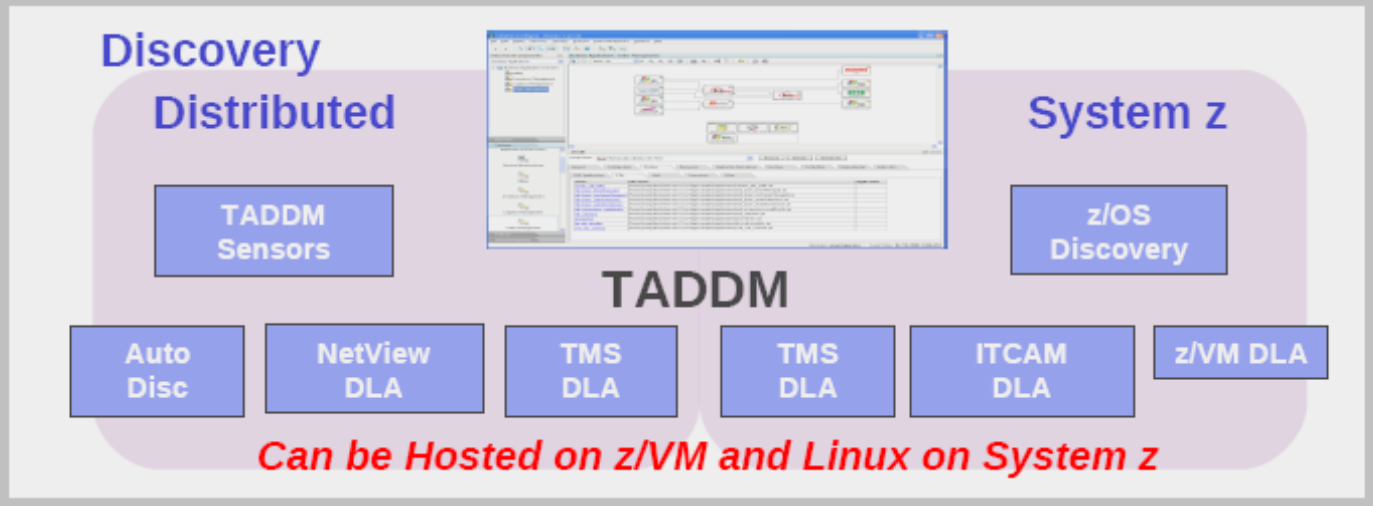


Report writers can quickly create custom reports without knowing underlying database structure.



Enhanced Automated Discovery of z and Distributed Resources

- Create / discover / visualize Business Applications and their dependencies between z/OS, z/VM and distributed resources
- Maintain and track configuration changes
- Baseline gold standard and measure configuration drift
- Comparison of configurations (test, user, QA, production)
- Improving IT awareness of Business applications (education)

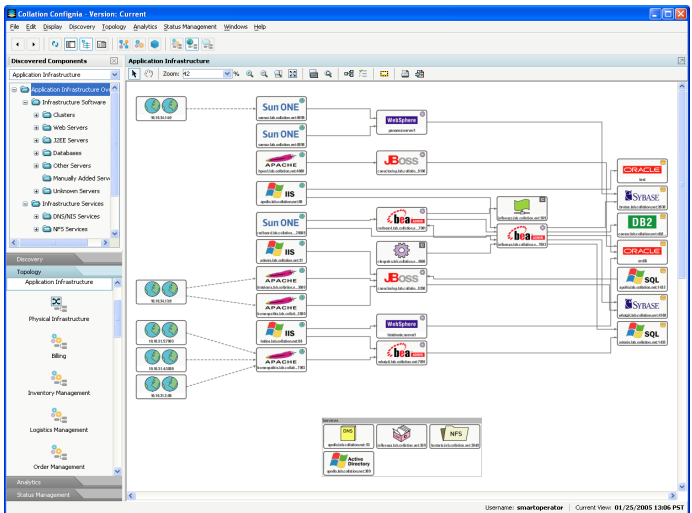


Tivoli Application Dependency Discovery Manager dynamically gathers configuration information from both Distributed and z/OS Resources and map their relationships.

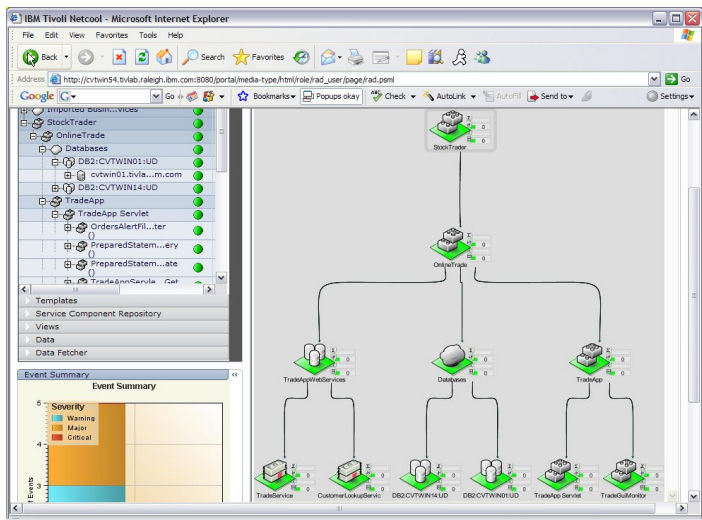
Enhanced TBSM Integration

TADDM helps to provide the core for a Business Service Management foundation

TADDM



TBSM



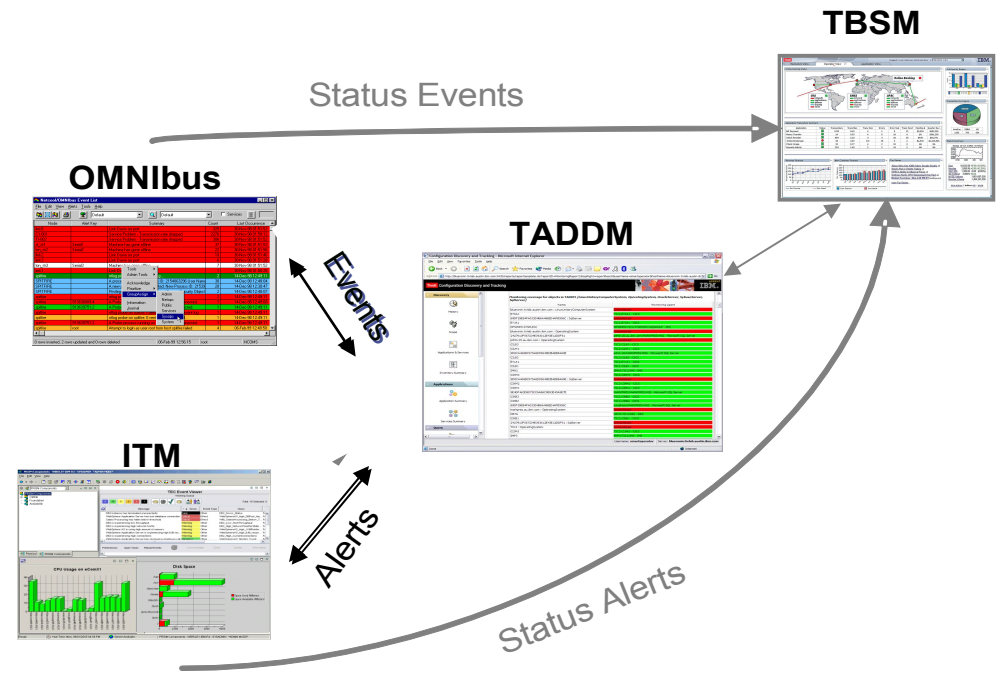
Cross tier application maps
Configuration changes

Launch in context to
configuration details panels

- Automate business service modeling and updates
- Prepare for Business Service Management
- Align IT with the Business

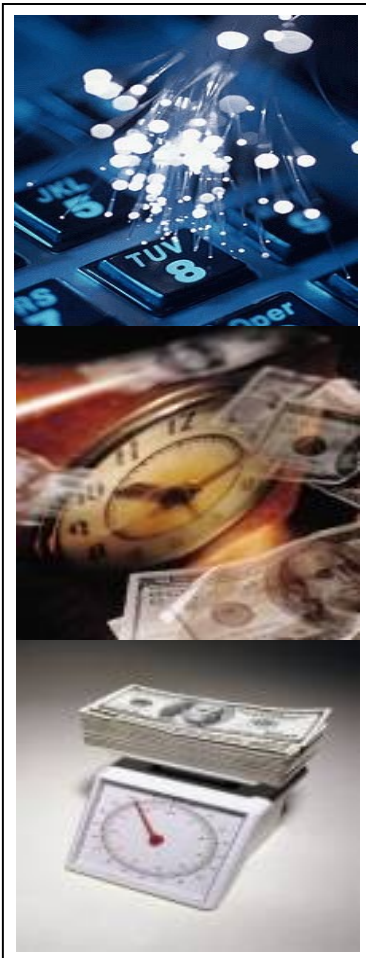
- Added ability to implement queuing and improved performance
- Proactive, immediate TADDM repository updates
 - Allows monitoring and management systems to notify TADDM of configuration changes
 - TADDM can update its repository to reflect the current state of the environment without performing a discovery.
 - Leverages existing monitoring solutions, including ITM and ITCAM, to keep discovered data accurate and business service views current.

Leverages existing monitoring solutions to keep discovered data accurate and business service views current



Key features in v7.2.1

Feature	Function	Benefit
Serviceability	<ul style="list-style-type: none"> ▪ISA log file collector ▪Split Anchor Logs for better Trouble Shooting ▪TADDM Health Checker 	<p>Improved trouble-shooting</p> <p>Improved efficiency</p>
Other Functional Enhancements	<ul style="list-style-type: none"> ▪Support authentication and authorization using Active Directory ▪Support for Remotely Anywhere SSH ▪Support for 64-bit platforms for Windows and Linux 	<p>Improved efficiency</p>



- **Reduce MTTR**
 - Discover and visualize application dependencies
 - Create application business models
 - Accurate and comprehensive cross-tier service visibility
 - Deep configuration details and interdependencies
 - Change history data to identify and isolate application changes.

- **Improve Operational Efficiency**
 - Make decisions based on accurate operational data

- **Proactive Change Management**
 - Component comparison reports (test, user, QA, production) attributes for like systems
 - Change impact analysis for planned changes (e.g. business apps effected)

- **Enhance Business Availability**
 - Align IT infrastructure with the business through discovery automation



Relevant
Information



Actionable
Insights



Smarter
Decisions



Better
Outcomes



www.ibm/software/tivoli

© Copyright IBM Corporation 2010. All rights reserved. The information contained in these materials is provided for informational purposes only, and is provided AS IS without warranty of any kind, express or implied. IBM shall not be responsible for any damages arising out of the use of, or otherwise related to, these materials. Nothing contained in these materials is intended to, nor shall have the effect of, creating any warranties or representations from IBM or its suppliers or licensors, or altering the terms and conditions of the applicable license agreement governing the use of IBM software. References in these materials to IBM products, programs, or services do not imply that they will be available in all countries in which IBM operates. Product release dates and/or capabilities referenced in these materials may change at any time at IBM's sole discretion based on market opportunities or other factors, and are not intended to be a commitment to future product or feature availability in any way. IBM, the IBM logo, Rational, the Rational logo, Telelogic, the Telelogic logo, and other IBM products and services are trademarks of the International Business Machines Corporation, in the United States, other countries or both. Other company, product, or service names may be trademarks or service marks of others.

Questions?

James Moore
Product Manager,
Tivoli Application Dependency Discovery Manager

jdmooore@us.ibm.com

