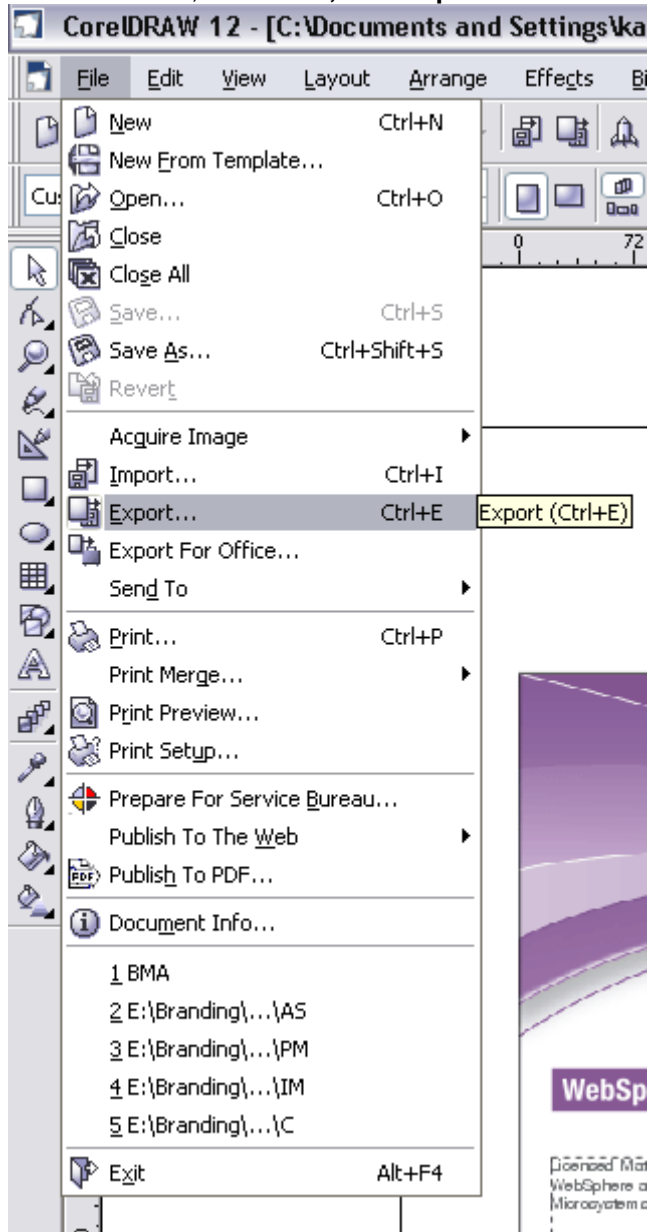
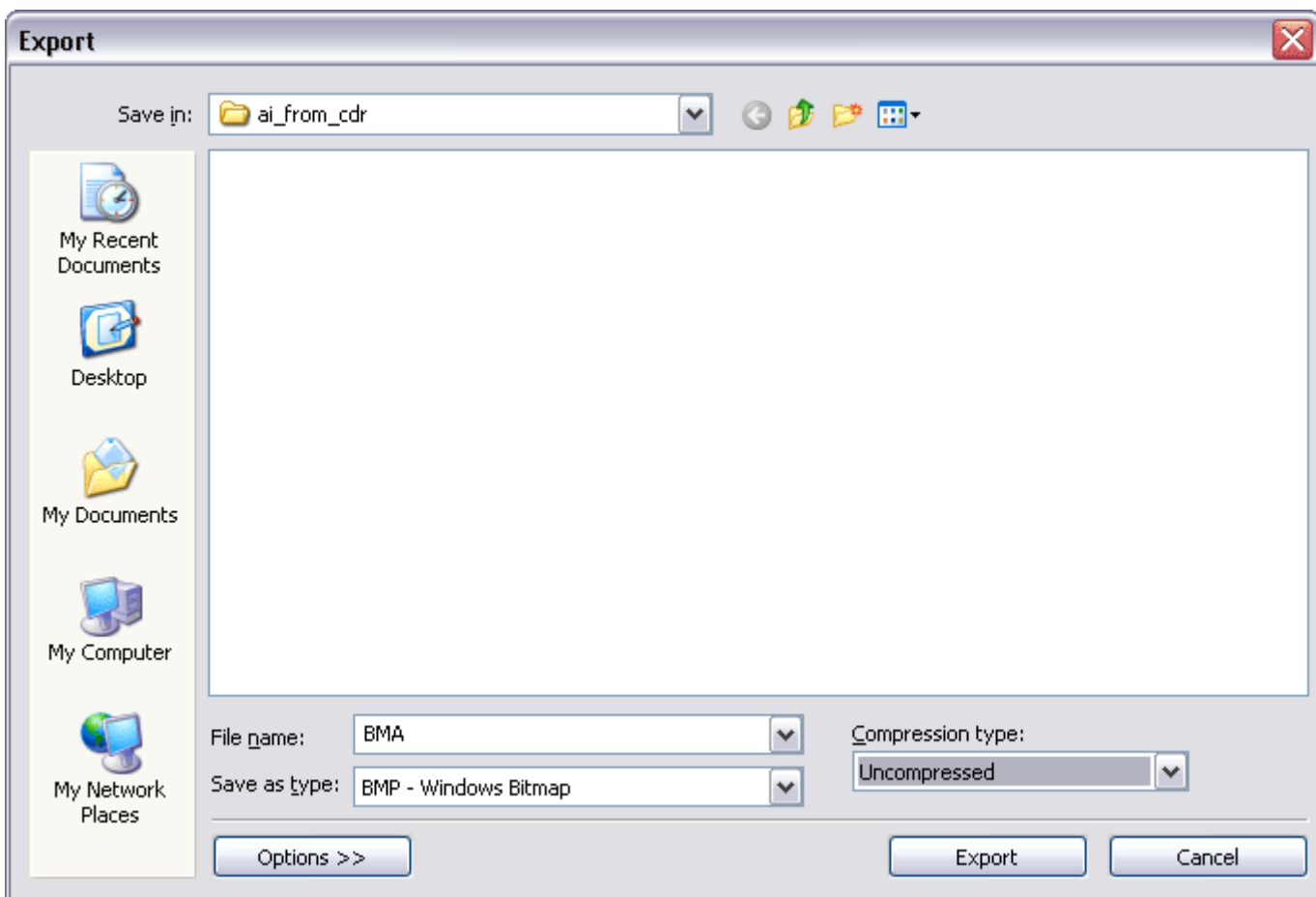


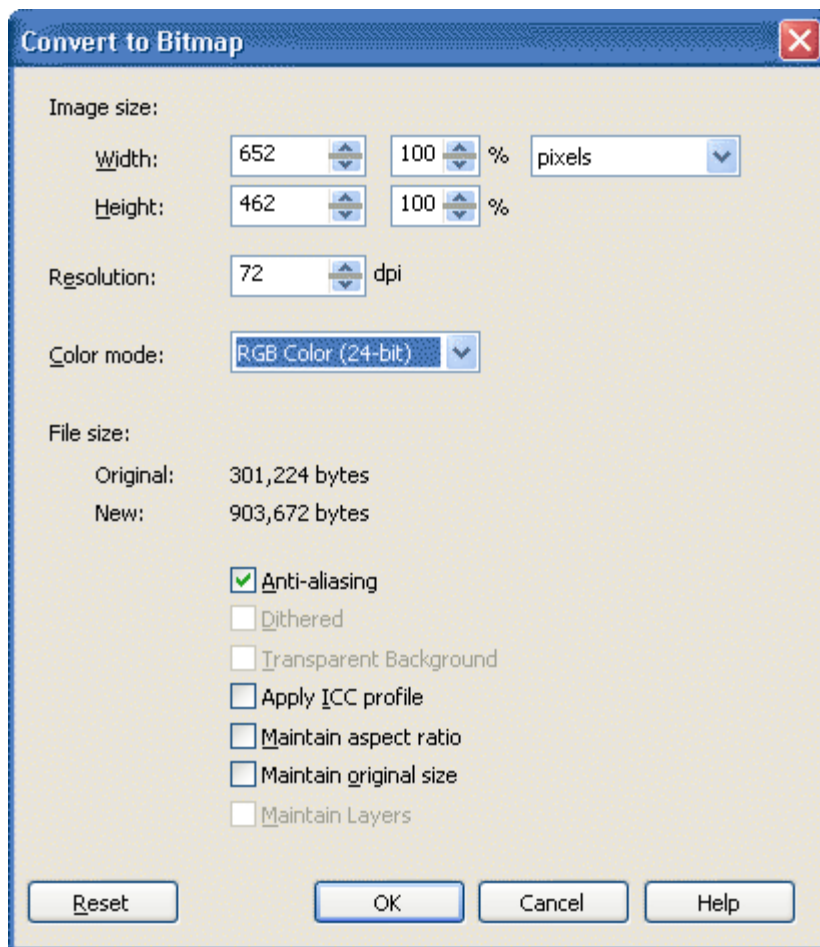
Please use these screens as reference when saving files from CorelDraw. Ensure all your settings are the same as what is displayed within each screen

From menu bar, select **File**, then **Export**

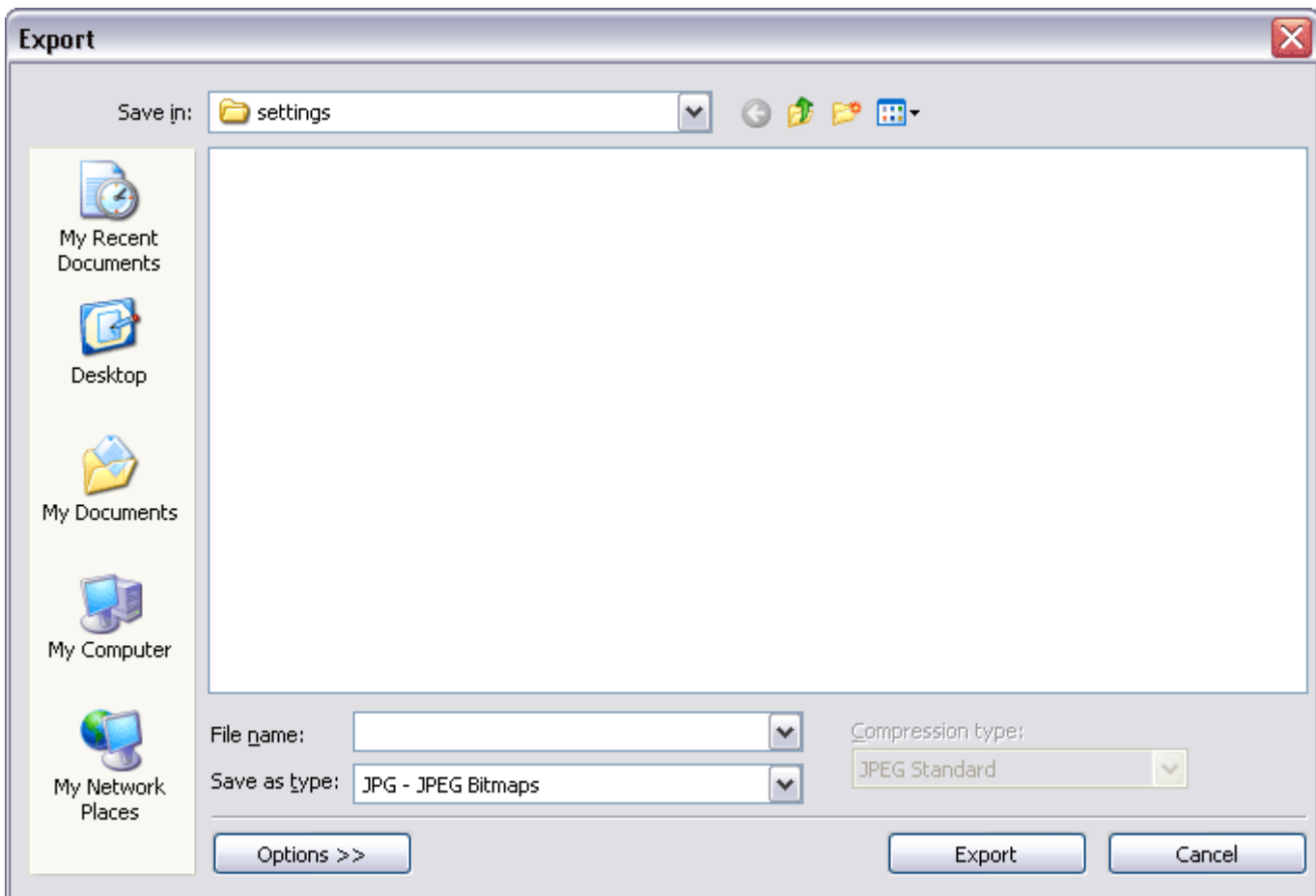


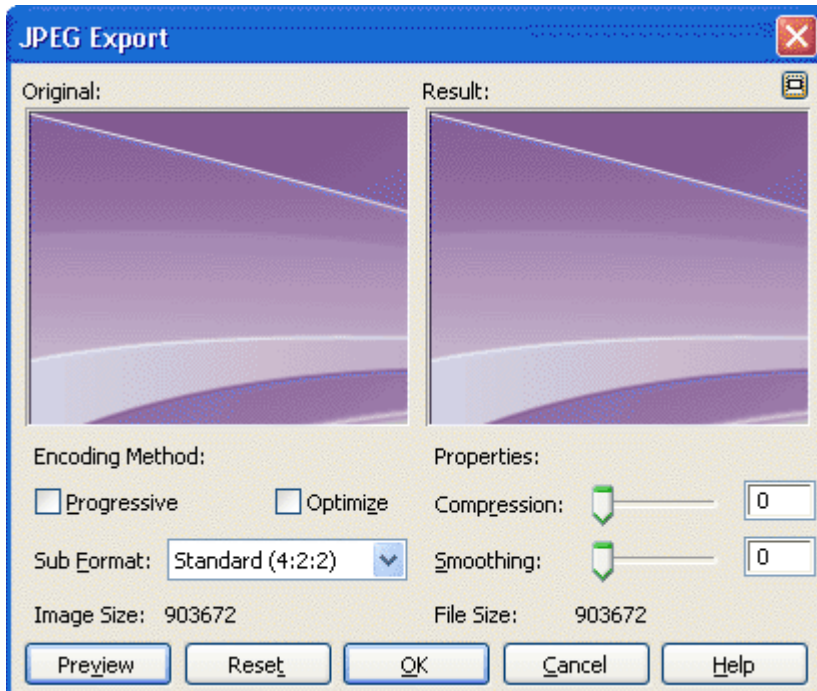
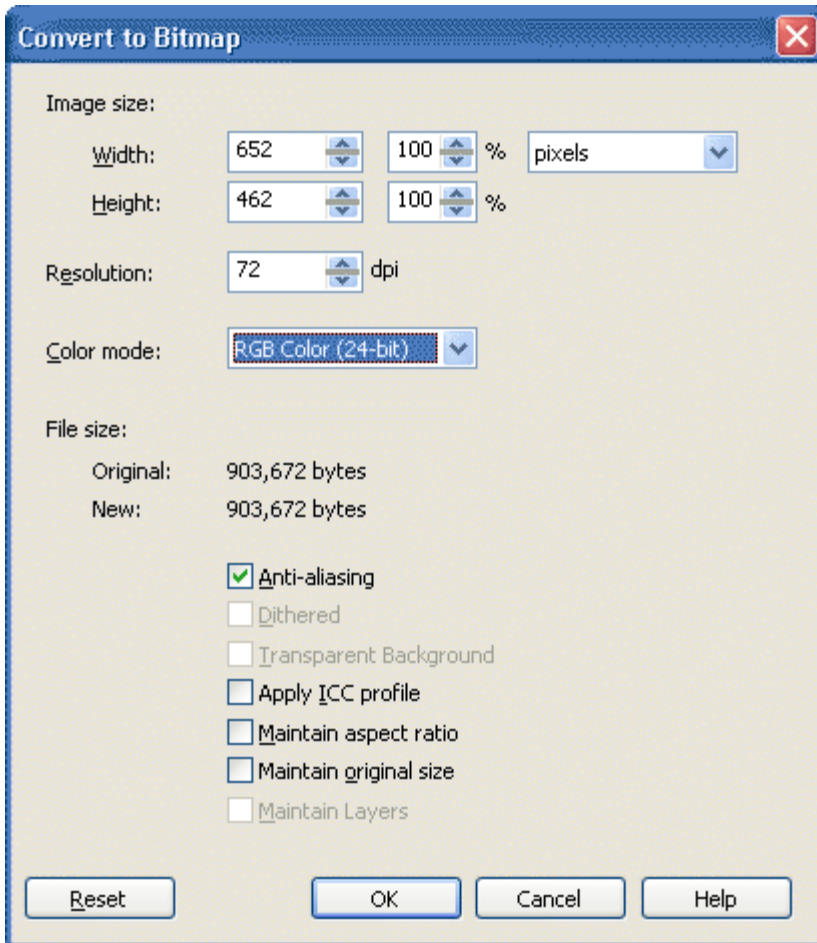
- **To save file as a .bmp:**



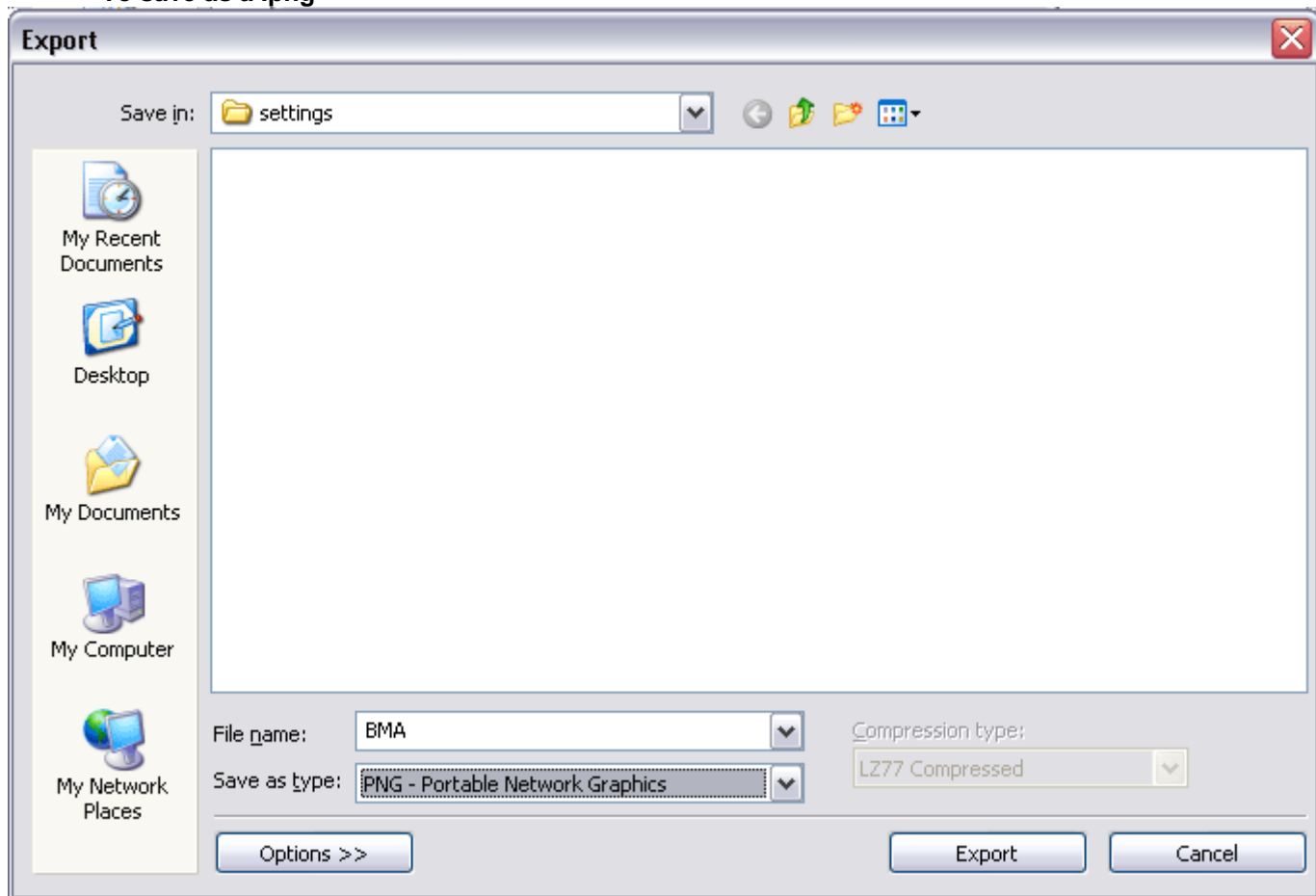


- **To save as a .jpg**





- To save as a .png



Convert to Bitmap

Image size:

Width:

652

100

%

pixels

Height:

462

100

%

Resolution:

72

dpi

Color mode:

RGB Color (24-bit)

File size:

Original:

903,672 bytes

New:

903,672 bytes

☒ Anti-aliasing

☐ Dithered

☐ Transparent Background

☐ Apply ICC profile

☐ Maintain aspect ratio

☐ Maintain original size

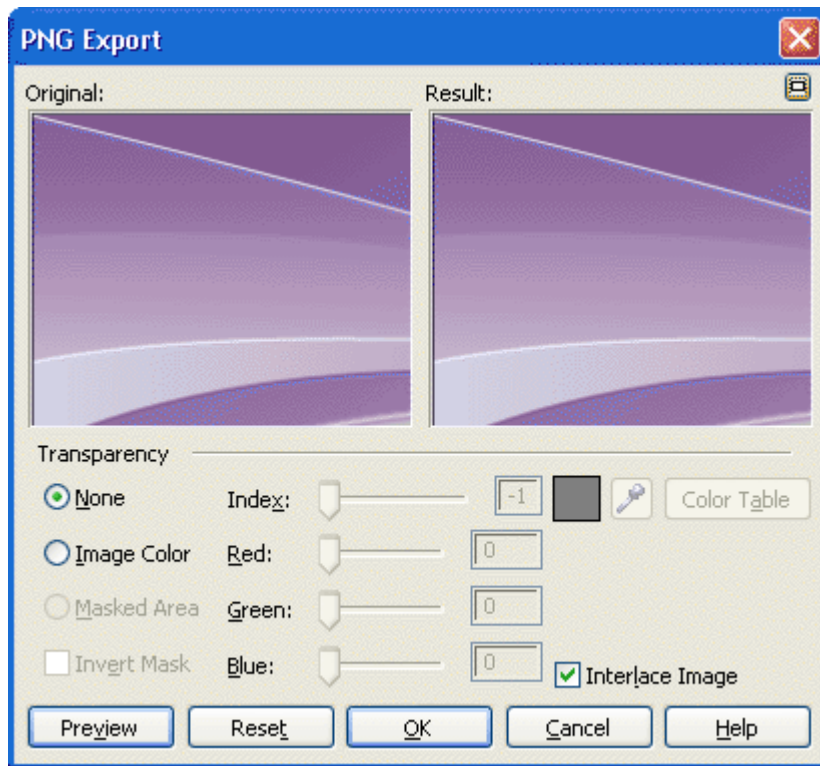
☐ Maintain Layers

Reset

OK

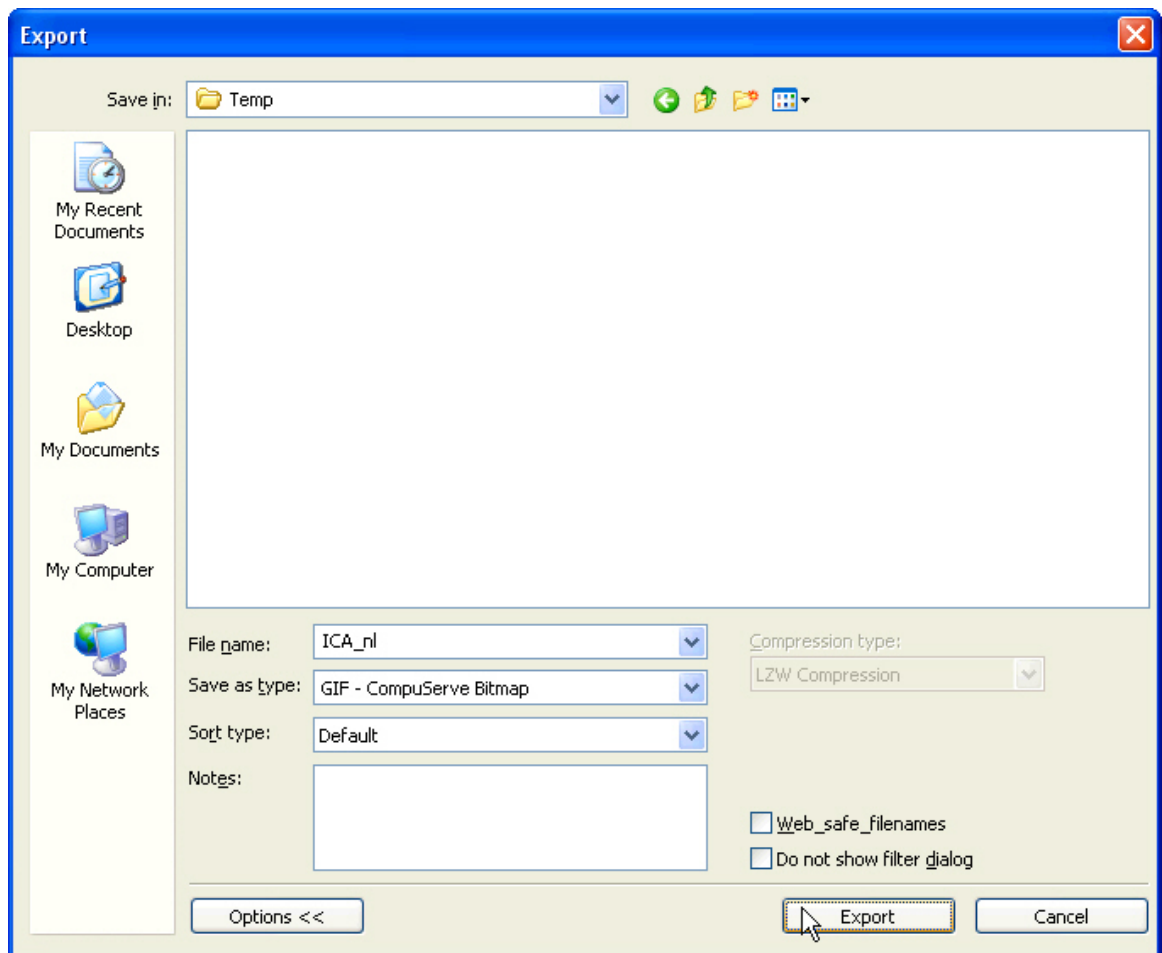
Cancel

Help

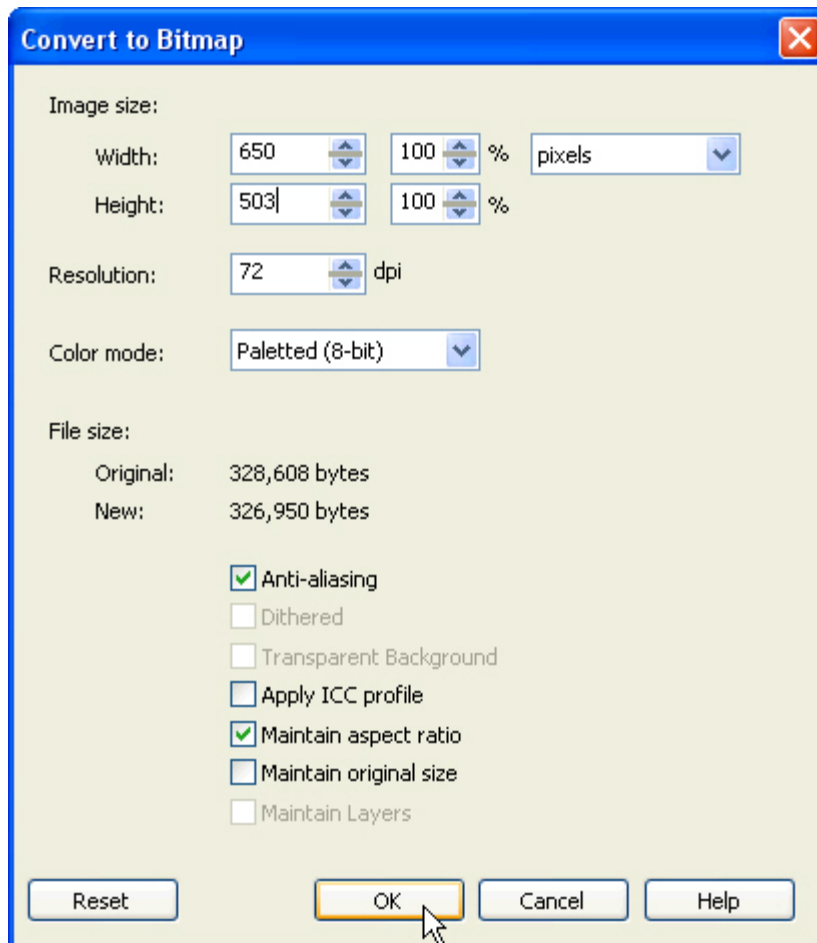


The GIF export instructions are:

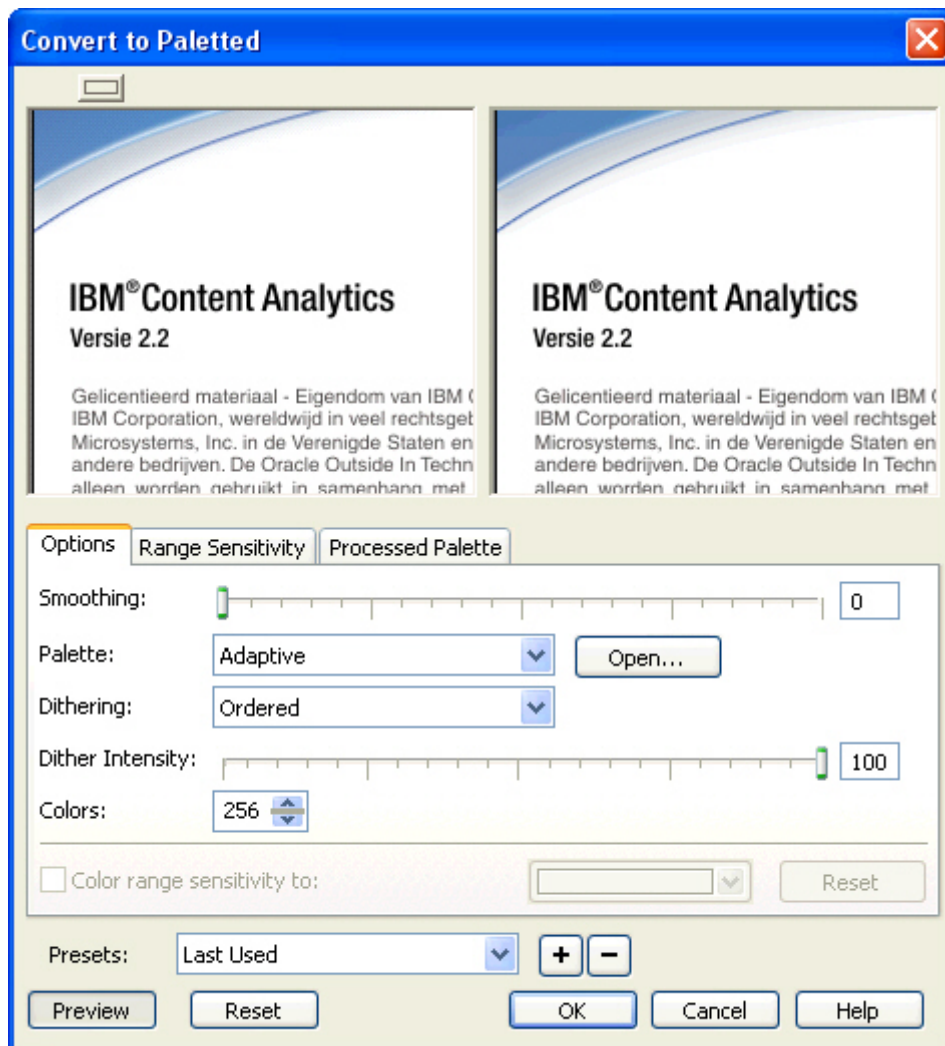
1. Select **File->Export** (Ctrl + E). The Export window appears



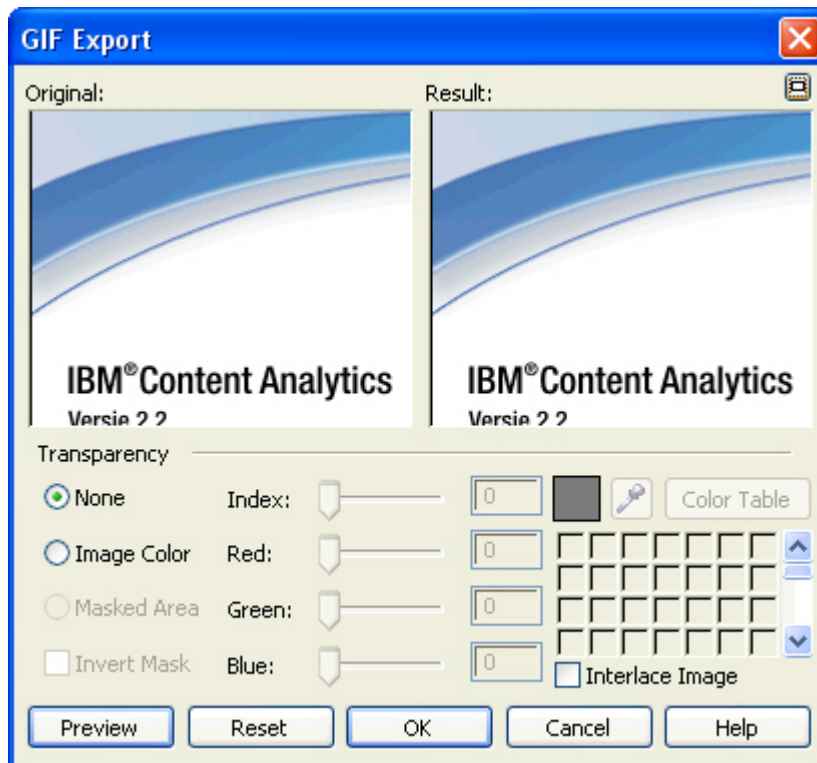
2. Select **GIF - CompuServe Bitmap** from the Save as type dropdown menu and pick the directory where files will be exported to. Click **Export**. The Convert to bitmap window appears.



3. Select **pixel** as the type measurement and leave the rest as is shown in the following screen capture. Click **OK**. The Convert to Palette windows appears



4. Ensure that all options appear the same in your window as is shown in SSG_GIF_Export2a.gif. Click **OK**. The GIF export window appears



5. Ensure that you have the **None** button selected for transparency, then click **OK**. The GIF will be generated.