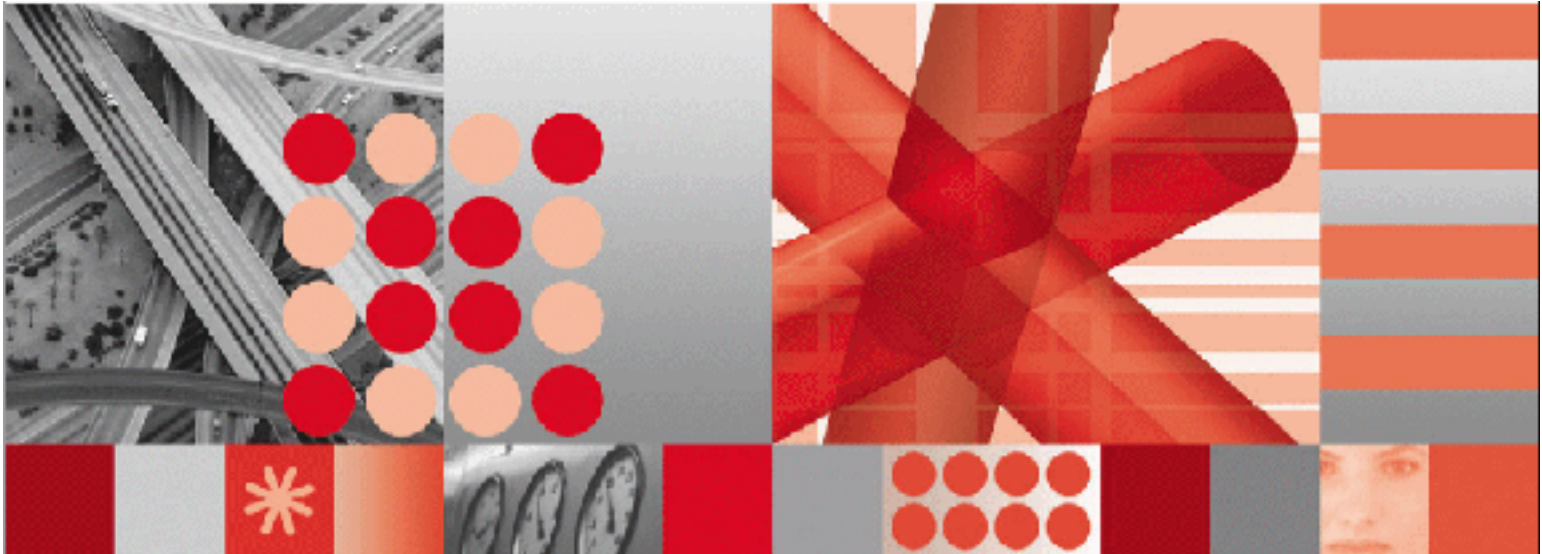




Release 6.2



## Patch 3 Release Notes

**Note**

Before using this information and the product it supports, read the information in "Notices" on page 19

This edition applies to version 6, release 2, modification 2 of IBM Maximo Enterprise for Oracle Applications 11i and to all subsequent releases and modifications until otherwise indicated in new editions. This edition replaces any previous editions of this document.

© Copyright International Business Machines Corporation 2008. All rights reserved.

US Government Users Restricted Rights - Use, duplication or disclosure restricted by GSA ADP Schedule Contract with IBM Corp.

# Contents

<b>About This Publication</b> .....	<b>v</b>
Intended Audience .....	v
<b>Release Notes</b> .....	<b>1</b>
Update Checklist .....	2
Performing the Installation Prerequisites .....	3
Installing the Maximo Enterprise Adapter for Oracle Applications 11i Release 6.2 Patch 3 .....	4
Importing Release 6.2 Patch 3 into Maximo .....	5
Importing Secondary Language Files into Maximo .....	6
Processing the Transactions in the Queues .....	7
Transactions in BEA WebLogic® Server Queues .....	7
Transactions in the IBM WebSphere® Application Server Queues .....	8
Processing of Transactions in Interface Tables .....	9
Maximo Interface Table Transactions .....	9
Transactions in the Oracle Applications Open Interface Tables .....	10
Performing Manual Updates .....	11
Patch 1 .....	11
Patch 3 .....	13
Patch 3 Fixed Issues .....	15
Release 6.2 Patch 3 .....	15
Release 6.2 Patch 2 .....	15
Release 6.2 Patch 1 .....	16
<b>Notices</b> .....	<b>19</b>



# About This Publication

This section explains how this guide can help you to use the IBM® Maximo® Enterprise Adapter for Oracle® Applications 11i. It also provides information about other IBM Corporation resources available to you, such as additional documentation and support.

## Intended Audience

This guide is for system administrators or other personnel who install and configure the Maximo Enterprise Adapter for Oracle Applications 11 Release 6.2 Patch 3.

## Intended Audience

# Release Notes

This document describes the activities involved in the installation of the IBM Maximo Enterprise Adapter for Oracle Applications 11i Patch 3.

**ATTENTION** Before installing the Maximo Enterprise Adapter for Oracle Applications 11i Release 6.2 Patch 3, you must have Maximo Release 6.2 installed on your server.

If you have installed Release 6.0 of MEA for Oracle, refer to the *IBM Maximo Enterprise Adapter for Oracle Applications 11i Release 6.0 to 6.2 Release Notes* the IBM Software Support Web for your specific installation instructions.

Install the Maximo Enterprise Adapter for Oracle Applications 11i Release 6.2 Patch 3 in a test environment before you install it in a production environment.

When you install the Maximo Enterprise Adapter for Oracle Applications 11i Release 6.2 Patch 3, have the following documents available for reference:

- ▼ *IBM Maximo Enterprise Adapter for Oracle Applications 11i Installation Guide*
- ▼ *IBM Maximo Enterprise Adapter for Oracle Applications 11i System Administrator's Guide*
- ▼ *IBM Maximo System Administrator's Guide*

# Update Checklist

The following checklist provides an overview of what you must do to install Release 6.2 Patch 3..

## Prerequisite Activities

- Determine the current software version of the Maximo Enterprise Adapter for Oracle Applications Release 6.2.
- Process transactions in the inbound and outbound queues.
- Process transactions in the Maximo interface tables and Oracle Applications interface tables.
- Disable the Oracle external system in the Maximo External Systems application.
- Stop the Maximo application servers and services.
- Stop the Actuate<sup>®</sup> servers and services.
- Back up the Maximo root folder.
- Back up the Maximo database.

## Installation Activities

- Install Maximo Enterprise Adapter for Oracle Applications 11i Release 6.2 Patch 3.
- Rebuild and deploy the maximo.ear file.
- Start the Maximo application servers and services.
- Start the Actuate servers and services.
- Sign in to Maximo.
- Import the Maximo Enterprise Adapter for Oracle Applications 11i Release 6.2 Patch 3 into Maximo.
- Check the updated version of the Maximo Enterprise Adapter for Oracle Applications.
- Import secondary language files into Maximo.
- Perform manual updates.
- Enable the Oracle external system in the Maximo External Systems application.



# Performing the Installation Prerequisites

Before you install the Maximo Enterprise Adapter for Oracle Applications 11i Release 6.2 Patch 3, complete the following steps:

**ATTENTION** You must have Maximo Release 6.2 installed on your server before the installation of Patch 3.

- 1 Determine the current software version.
  - a Sign in to Maximo.
  - b From the Maximo Navigation Bar, click Help.
  - c From the drop-down list, select **About MAXIMO**. Maximo displays the current Maximo Enterprise Adapter for Oracle Applications 11i software version, in the following format:

Oracle Applications 11i-6.2.00.031-31.0

The number that appears after "Oracle Applications 11i-6.2" (in this example, 00) indicates what patch is installed.

- ▼ If the most recently installed patch is 3, the software is current. Do not install the Maximo Enterprise Adapter for Oracle Applications 11i Release 6.2 Patch 3.
  - ▼ If the software is not current, note the most recently installed patch. You need this information for "Performing Manual Updates", on page 11.
- 2 Process any transactions in the inbound and outbound queues. For more information, see "Processing the Transactions in the Queues", on page 7.
  - 3 Process any transactions in the Maximo and Oracle Applications interface tables. For more information, see "Processing of Transactions in Interface Tables", on page 9.
  - 4 Disable the Oracle external system in Maximo.
    - a In the External Systems application, select the external system (Oracle Applications 11i) that you want to disable.
    - b On the System tab, clear the **Enabled** check box.
  - 5 Stop the Maximo application servers and services.
  - 6 Stop the Actuate servers and services.
  - 7 Back up the entire <maximo> folder, where <maximo> is the root folder where you installed Maximo.
  - 8 Back up the Maximo database.

# Installing the Maximo Enterprise Adapter for Oracle Applications 11i Release 6.2 Patch 3

This section describes the steps you must perform to install the MEA for Oracle Applications 11i Release 6.2 Patch 3 in a Windows® environment.

Before you perform this procedure, complete “Performing the Installation Prerequisites”, on page 3.

To install the Maximo Enterprise Adapter for Oracle Applications 11i Release 6.2 Patch 3, you must complete the following steps:

**1** Navigate to the following folder:

```
<maximo>\PowerUpdateClient\MEAOracleAdapterPowerUpd
```

- 2** Run update.exe to retrieve updates for the Maximo Enterprise Adapter for Oracle Applications 11i from the IBM Software Support download site. The Welcome to PowerUpdate window opens.
- 3** Click **Next**. While the program checks for updates, the Checking for Update window opens.
- 4** If Release 6.2 Patch 3 is installed already, the application opens the following message: **Your Software is Already Up to Date**. If you see this message, click **Exit**, and go to step 13 on page 4.
- 5** If an update is available, the Update Available window opens. Click **Next**. After the program retrieves the update, the Updater Retrieved window opens.
- 6** Click **Next**. The Introduction window for the patch installation opens.
- 7** Click **Next**. The Choose Install Folder window opens.
- 8** If the default folder is not the Maximo root folder, click **Choose** to browse for the Maximo root folder.
- 9** Click **Next**. The Choose Maximo Base Language window opens.
- 10** Select the base language, and click **Next**. The Pre-Installation Summary window opens.
- 11** Click **Install**. After the installation program finishes, the Install Complete window opens. If this window displays a message that errors have occurred, check the Maximo installation log after you close the window.
- 12** Click **Done**.
- 13** Rebuild and deploy the maximo.ear file. For information about how to build and deploy EAR files, refer to the *IBM Maximo System Administrator's Guide*.

14 Start the Maximo application servers and services.

15 Start the Actuate servers and services.

Sign in to Maximo to check that the Maximo application server started successfully.

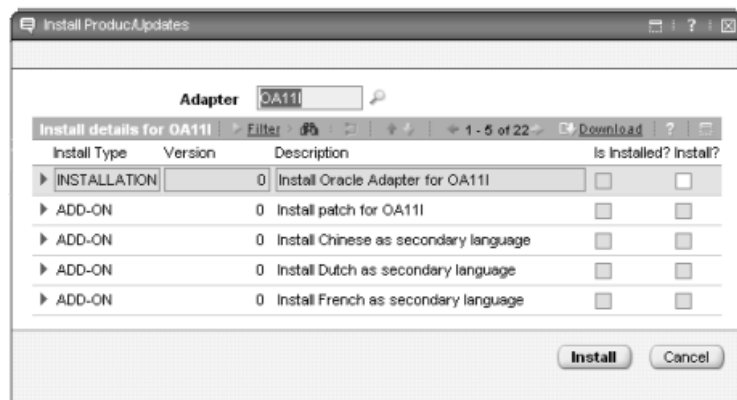
## Importing Release 6.2 Patch 3 into Maximo

Before you perform this procedure, complete “Installing the Maximo Enterprise Adapter for Oracle Applications 11i Release 6.2 Patch 3”, on page 4.

To import the Maximo Enterprise Adapter for Oracle Applications 11i Release 6.2 Patch 3 into Maximo, you must complete the following steps:

- 1 In the External Systems application, select any external system.
- 2 From the Select Action menu, select **Install Product/Updates**. The Install Product/Updates dialog box opens.
- 3 In the **Adapter** field, enter **OA11I**. The Install Product/Updates dialog box opens the products, patches, and add-ons available for the Maximo Enterprise Adapter for Oracle Applications 11i. You see a combination of the following items:
  - ▼ Install Oracle Adapter for OA11I
  - ▼ Install Projects for OA11I
  - ▼ Install patch for OA11I
  - ▼ Install <language> as secondary language
  - ▼ Install patch for <language> secondary language

### *Install Product/Updates Dialog Box*



- 4 Select the **Install** check box that corresponds to **Install patch for OA11I**, and click **Install**. Maximo opens the following message: **Please wait**. When the message disappears, the application has imported the patch. This step can take five minutes or more to complete.

- 5 Repeat step 1 on page 3 to verify that the software is at the Patch 3 revision level.
- 6 If you use secondary languages, import the language files into Maximo. For more information, see “Importing Secondary Language Files into Maximo”, on page 6.
- 7 Perform manual updates. For more information, see “Performing Manual Updates”, on page 11.
- 8 Enable the external system in Maximo.
  - a In the External Systems application, select the external system that you want to enable.
  - b On the System tab, select the **Enabled** check box.

You have installed the Maximo Enterprise Adapter for Oracle Applications 11i Release 6.2 Patch 3.

# Importing Secondary Language Files into Maximo

Skip this section if you do not use secondary languages.

This procedure imports into Maximo secondary language files and patches to those files. Importing these files updates error messages, column titles, and column remarks with additional languages.

**ATTENTION** Before you can import a secondary language file into Maximo, you must enable that language in Maximo. For more information, refer to the *IBM Maximo System Administrator's Guide*.

You can import as many secondary languages as you have enabled in Maximo. For each language, import the secondary language, and then import the corresponding patch.

To import the secondary language files into Maximo, you must complete the following steps for each language that you want to import:

- 1 In the External Systems application, select any external system.
- 2 From the Select Action menu, select **Install Product/Updates**. The Install Product/Updates dialog box opens.
- 3 In the **Adapter** field, select OA11I. The dialog box displays the products, patches, and add-ons available for the MEA for Oracle.
- 4 Select the **Install** check box that corresponds to “Install <language> as secondary language,” and then click **Install**. A message opens: **Please wait**. When the message disappears, you have imported the secondary language.

- 5 Select the **Install** check box that corresponds to the install patch for the secondary language. Click **Install**. A message opens: "Please wait . . .". When the message disappears, you have imported the patch for the secondary language file.

## Processing the Transactions in the Queues

Process all transactions in the inbound and outbound queues before you install this patch.

After you install Patch 3, you might be unable to process outstanding transactions.

### Transactions in BEA WebLogic® Server Queues

To process transactions in the inbound and outbound queues on a BEA WebLogic Server check that no messages remain in the following queue servers:

- ▼ mxintcqinserver
- ▼ mxintsqinserver
- ▼ mxintsqoutserver

To check for pending messages, complete the following steps:

- 1 Start the BEA WebLogic Server.
- 2 Open a browser and enter the URL for the BEA WebLogic Server Administration Console.

#### Example URL

`http://localhost:7001/console`

The BEA WebLogic Server Administration Console page opens.

- 3 Enter your name and password, and then click **Sign In**. The BEA WebLogic Server Home page opens.
- 4 Navigate to mydomain > Services > JMS > Servers > mxintcqinserver. The mxintcqinserver page opens.
- 5 On the Monitoring tab, click the Monitor Active JMS Servers link. The Active JMS Servers page opens. The Messages column for the mxintcqinserver queue server displays the number of unprocessed messages in that queue.
- 6 Wait until the queue is empty. If messages remain in the queue, check the error folder that you configured during the Integration Administration Setup process. If error messages exist, correct the corresponding transactions and put them in the retry folder.

For information about how to correct errors, refer to the *IBM Maximo Enterprise Adapter System Administrator's Guide*.

- 7 Repeat the preceding steps for the mxintsqinserver and mxintsqoutserver queue servers.
- 8 Return to step 3 on page 3.

## Transactions in the IBM WebSphere® Application Server Queues

To process transactions in the inbound and outbound queues on an IBM WebSphere server, check that no messages remain in the following queue destinations:

- ▼ cqinbd
- ▼ sqinbd
- ▼ sqoutbd

To check for pending messages, complete the following steps:

- 1 Start the WebSphere server.
- 2 Open a browser and enter the URL for the WebSphere console.

### Example URL

`http://localhost:9060/ibm/console`

The WebSphere console page opens.

- 3 Enter your user ID, and then click **Log In**.
- 4 Navigate to Service integration > Buses > meajmsbus > Destinations.
- 5 Click queue destination cqinbd.
- 6 On the Configuration tab, select Queue Points under Message Points.
- 7 Select the identifier for the queue. The **Current Message Depth** field on the Runtime tab displays the number of messages in the queue. If the number is zero, go to step 10.
- 8 Click the Messages link under Additional Properties to see the messages with their Transaction IDs.
- 9 Click **Refresh** until the queue is empty. If messages remain in the queue, check the error folder that you configured during the Integration Administration Setup process. If error messages exist, correct the corresponding transactions and put them in the retry folder.

For information about how to correct errors, refer to the *IBM Maximo Enterprise Adapter System Administrator's Guide*.

- 10 Repeat the preceding steps for the sqinbd and sqoutbd queues.
- 11 Return to step 3 on page 3.

# Processing of Transactions in Interface Tables

Process all transactions in the interface tables before you install patch 3.

After you install Patch 3, you might be unable to process outstanding transactions.

## Maximo Interface Table Transactions

To process transactions in the Maximo interface tables, complete the following steps:

- 1** Connect to the MAXORA schema in the Oracle Applications database.
- 2** To check for unprocessed transactions in the inbound queue table, complete the following steps:
  - a** Enter the following SQL statement:

```
select * from MXIN_INTER_TRANS;
```
  - b** If the SQL statement does not return any records, no unprocessed transactions exist. If the SQL statement returns any records, wait for the Maximo server to process the transactions.
- 3** To check for unprocessed transactions in the outbound queue table, complete the following steps:
  - a** Enter the following SQL statement:

```
select distinct iface_name from MXOUT_INTER_TRANS;
```

- b** If the SQL statement returns records, use the following table to determine the interface table that corresponds to each interface (iface\_name) returned by the SQL statement.

Interface	Interface Table
MX6_GLTXN	MXGLTXN_IFACE
MX6_INVENTORY	MXINVENTORY_IFACE
MX6_INVOICE	MXINVOICE_IFACE
MX6_INVRES	MXINVRES_IFACE
MX6_ITEM	MXITEM_IFACE
MX6_PC	MXPC_IFACE
MX6_PO	MXPO_IFACE
MX6_PR	MXPR_IFACE
MX6_RECEIPT	MXRECEIPT_IFACE

- c** For each interface table that corresponds to an interface name returned by the SQL statement in step 3a, enter the following SQL statement:

```
select * from interfacetablename where oa_ifacestatus <> 'DONE';
```

This statement returns any unprocessed transactions.

- d** Correct the unprocessed transactions.

- 4** Back up the interface tables to retain them for historical purposes. Depending on the current patch level, the patch process might drop interface tables.

## Transactions in the Oracle Applications Open Interface Tables

To process transactions in the Oracle Applications open interface tables, complete the following steps:

- 1** In Oracle Applications, run the concurrent reports for each integration point that you use. For information about how to run the concurrent reports, refer to the *IBM Maximo Enterprise Adapter for Oracle Applications 11i System Administrator's Guide*.
- 2** Check the exception reports and correct any errors.
- 3** Rerun the concurrent reports until no errors exist.
- 4** Return to step 4 on page 3.



# Performing Manual Updates

This section contains manual updates that you must perform after you install MEA for Oracle Applications 11i Release 6.2 Patch 3.

Obtain the most recent version of the patch release notes for the Maximo Enterprise Adapter for Oracle Applications 11i, Patch 3, from the IBM Software Support Web site ([ibm.com/products/finder/us/finders?pg=ddfinder](http://ibm.com/products/finder/us/finders?pg=ddfinder)).

## Patch 1

### Re-create MXPO\_IFACE Interface Table

When you apply Patch 1, manually re-create the MXPO\_IFACE interface table.

To re-create the interface tables, complete the following steps:

- 1 Stop the Maximo application servers and services.
- 2 Stop the Actuate servers and services.
- 3 Run Configdb.bat from `<maximo>/tools/maximo`.
- 4 Start the Maximo application servers and services.
- 5 Start the Actuate servers and services.
- 6 Go to the External Systems application in Maximo.
- 7 Click the System tab.
- 8 From the Select Action menu, select **Create Interface Tables**.
- 9 In the **End Point** field, enter the Oracle system end point or click Select Value.
- 10 Select the check box to the left of the MXPO\_IFACE listing to re-create this interface table.
- 11 Click **Create**.

This step might take 10 minutes or more to complete.

## Performing Manual Updates

### Modify PO User Exit

This patch contains a fix for issue 07-10068. If you use a Java PO user exit, update the user to skip the normal user exit processing when OA\_CLOSELINES=1.

The bold text in the following sample Java PO user exit highlights the areas that you must update.

```
...
List allLines = data.getChildrenData("POLINE");
if (allLines != null && allLines.size()>0)
{
    for (int i = 0;i < allLines.size(); i++)
    {
        data.setAsCurrent(allLines, i);
        // Do not process lines where OA_CLOSELINES is true
        if (!data.getCurrentDataAsBoolean("OA_CLOSELINES"))
        {
            . . . Your standard processing here . . .
        }
    }
    data.setParentAsCurrent();
}
...
```

## Patch 3

### Install Store Procedures

To install the updated Oracle objects, complete the following steps:

- 1 In SQL\*PLUS®, connect to the Oracle Applications database as user MAXORA.
- 2 To list and set the install parameters defined in setofvar.sql, enter the following command:

```
SQL> start <Maximo_root>\ORACLEAPIS\install\setofvar
```

The defined install parameters display.

- 3 Enter the following command:

```
SQL> start &InstallDir.install
```

- 4 Press **Enter**. Depending on the environment, this step might take two to 10 minutes to complete.

The generated file is in the following location:

```
<maximo>\ORACLEAPIS\log\install.out
```

- 5 Check the install.out file for errors.

The following table describes the errors that you might find listed in that file.

**NOTE** Before you continue with the installation, fix the errors that you find and rerun install.sql without errors.

Error Type	Error text and action
File not found	Search for text similar to “unable to open file \<maximo>\ORACLEAPIS\...”.  If you find this text, verify that the setofvar.sql file has the correct folder settings.
Statement not accepted by the system	Search for “unknown command” text.  If you find this text, verify that the version of SQL*PLUS for Windows is the same or later than 3.1.3.5.4.
Oracle error	Search for “ORA –” text.  If you find this text, contact your Oracle database administrator.
Compile error	Search for “PLS –” text.  If you find this text, search for “with compilation error.” If you find the latter text, contact IBM Support.

## Performing Manual Updates

### Run UPDATEDB

To run the UPDATEDB, complete the following steps:

- 1 Naviagate to `install_root\tools\maximo`.
- 2 Run the `updatedb.bat` file.

# Patch 3 Fixed Issues

Maximo Enterprise Adapter for Oracle Applications 11i Release 6.2 Patch 3 fixes the following issues.

## Release 6.2 Patch 3

<b>Issue(s)</b>	07-14673
<b>Description</b>	The ACTIVE attribute does not exist for COMPANIES object.
<b>Replaced File(s)</b>	psdi\iface\oa11i\VendorInExt.class
<b>Issue(s)</b>	08-10482
<b>Description</b>	The Maximo Oracle Adapter DBOA11I variable must be stored in the system to support the upgrade to Maximo Enterprise Adapter for Oracle Applications 12 Release 7.1.
<b>Replaced File(s)</b>	applications\maximo\properties\product\oa11i.xml tools\maximo\en\oa11i\V600_01db2 tools\maximo\en\oa11i\V600_01.ora tools\maximo\en\oa11i\V600_01.sqs
<b>Issue(s)</b>	08-14110
<b>Description</b>	A Purchasing Contract without any lines does not enter into Maximo through the MEA for Oracle for Purchasing Contract.
<b>Replaced File(s)</b>	psdi\iface\oa11i\PCInExt.class
<b>Issue(s)</b>	08-14965
<b>Description</b>	Material Receipts for a Project Account are skipped in the Oracle Projects Adapter.
<b>Replaced File(s)</b>	psdi\iface\oa11i\ProjTxnOutExt.class

## Release 6.2 Patch 2

<b>Issue(s)</b>	07-13850
<b>Description</b>	PO header line errors occur when users update and send POs from Maximo to Oracle Financials using the CAI PO Interface.
<b>Replaced File(s)</b>	ORACLEAPIS\interfac\opox.sp
<b>Issue(s)</b>	07-16073
<b>Description</b>	Maximo sends incorrect ship to and storeroom PO receipt information to Oracle Financials when users receive one of two line items on a PO.
<b>Replaced File(s)</b>	ORACLEAPIS\interfac\orcvx10.sp

### Patch 3 Fixed Issues

<b>Issue(s)</b>	07-17940
<b>Description</b>	PLS-00302: component 'RATE_SCHEDULE_ID' must be declared error occurs when Maximo users run the install.sql.
<b>Replaced File(s)</b>	ORACLEAPIS\paapis\oflcpa.sp

### Release 6.2 Patch 1

<b>Issue(s)</b>	07-10068
<b>Description</b>	When users delete PO Lines from the Maximo database, the data import process cancels PO Lines in the Oracle Applications.
<b>Replaced File(s)</b>	psdi\iface\oa11i\POOutExt.class psdi\iface\oa11i\patch\intobj.xml psdi\iface\oa11i\patch\de\objectcfg.xml psdi\iface\oa11i\patch\en\objectcfg.xml psdi\iface\oa11i\patch\es\objectcfg.xml psdi\iface\oa11i\patch\fr\objectcfg.xml psdi\iface\oa11i\patch\it\objectcfg.xml psdi\iface\oa11i\patch\ja\objectcfg.xml psdi\iface\oa11i\patch\ko\objectcfg.xml psdi\iface\oa11i\patch\nl\objectcfg.xml psdi\iface\oa11i\patch\pt\objectcfg.xml psdi\iface\oa11i\patch\sv\objectcfg.xml psdi\iface\oa11i\patch\sv\objectcfg.xml psdi\iface\oa11i\patch\zh\objectcfg.xml ORACLEAPIS\interfac\opox.sp

<b>Issue(s)</b>	07-10801
<b>Description</b>	Unhandled exception occurs when Maximo sends CAI PO lines to the Oracle Applications.
<b>Replaced File(s)</b>	ORACLEAPIS\interfac\povali2b.pkg

<b>Issue(s)</b>	07-10855
<b>Description</b>	Maximo updates CAI PO records incorrectly in the Oracle Applications when users approve PO records with null quantity service lines.
<b>Replaced File(s)</b>	ORACLEAPIS\interfac\polodm3b.pkg ORACLEAPIS\interfac\polodm3s.psp

<b>Issue(s)</b>	07-11496
<b>Description</b>	PLS-00306: wrong number or types of arguments in call to 'MXE_USR_RCV_SP' error occurs when Maximo users run the install.sql.
<b>Replaced File(s)</b>	ORACLEAPIS\interfac\orcvx9.sp

<b>Issue(s)</b>	07-14322
<b>Description</b>	Oracle Multiple Operating Units functionality has changed for MIG Release 4.1.1 upgrade customers only. Multiple Operating Units can now be added within a single site.
	<p><b>NOTE</b> If you have configured your Maximo Integration Gateway Release 4.1.1 system to use Multiple Operating Units, do not upgrade your MEA for Oracle to Release 6.2, until MEA for Oracle Release 6.2.1, or later, is available.</p> <p>For further information about Multiple Operating Units, see “Multiple Operating Units” on page 2-3, in the <i>IBM Maximo Enterprise Adapter for Oracle Applications 11i Release 4.1.1 to Release 6.2 Upgrade Guide</i>.</p>
<b>Replaced File(s)</b>	psdi\iface\oa11i\ERPEExt.class psdi\iface\oa11i\InvoiceInExt.class psdi\iface\oa11i\InvoiceOutExt.class psdi\iface\oa11i\PCInExt.class psdi\iface\oa11i\PCOutExt.class psdi\iface\oa11i\POInExt.class psdi\iface\oa11i\POOutExt.class psdi\iface\oa11i\PROutExt.class psdi\iface\oa11i\ReceiptOutExt.class
<b>Issue(s)</b>	07-14741
<b>Description</b>	Maximo does not send invoice costs to Oracle Applications when the loaded cost amount is zero.
<b>Replaced File(s)</b>	psdi\iface\oa11i\GLTxnOutExt.class
<b>Issue(s)</b>	07-15068
<b>Description</b>	PO Line updates were sent from Maximo to Oracle Applications CAI table after Maximo users cancel the PO.
<b>Replaced File(s)</b>	ORACLEAPIS\interfac\opoxx.sp
<b>Issue(s)</b>	06-20464
<b>Description</b>	Oracle integration now allows the item rotating flag to be set to True or False only when users insert new item records. Users cannot update the rotating flag on existing items.
<b>Replaced File(s)</b>	psdi\iface\oa11i\ItemInExt.class





# Notices

This information was developed for products and services offered in the U.S.A.

IBM may not offer the products, services, or features discussed in this document in other countries. Consult your local IBM representative for information on the products and services currently available in your area. Any reference to an IBM product, program, or service is not intended to state or imply that only that IBM product, program, or service may be used. Any functionally equivalent product, program, or service that does not infringe any IBM intellectual property right may be used instead. However, it is the user's responsibility to evaluate and verify the operation of any non-IBM product, program, or service.

IBM may have patents or pending patent applications covering subject matter described in this document. The furnishing of this document does not grant you any license to these patents. You can send license inquiries, in writing, to:

IBM Director of Licensing  
IBM Corporation  
North Castle Drive  
Armonk, NY 10504-1785  
U.S.A.

For license inquiries regarding double-byte (DBCS) information, contact the IBM Intellectual Property Department in your country or send inquiries, in writing, to:

IBM World Trade Asia Corporation  
Licensing  
2-31 Roppongi 3-chome, Minato-ku  
Tokyo 106-0032, Japan

**The following paragraph does not apply to the United Kingdom or any other country where such provisions are inconsistent with local law:**  
INTERNATIONAL BUSINESS MACHINES CORPORATION PROVIDES THIS PUBLICATION "AS IS" WITHOUT WARRANTY OF ANY KIND, EITHER EXPRESS OR IMPLIED, INCLUDING, BUT NOT LIMITED TO, THE IMPLIED WARRANTIES OF NON-INFRINGEMENT, MERCHANTABILITY OR FITNESS FOR A PARTICULAR PURPOSE. Some states do not allow disclaimer of express or implied warranties in certain transactions, therefore, this statement may not apply to you.

This information could include technical inaccuracies or typographical errors. Changes are periodically made to the information herein; these changes will be incorporated in new editions of the publication. IBM may make improvements and/or changes in the product(s) and/or the program(s) described in this publication at any time without notice.

Any references in this information to non-IBM Web sites are provided for convenience only and do not in any manner serve as an endorsement of those Web sites. The materials at those Web sites are not part of the materials for this IBM product and use of those Web sites is at your own risk.

IBM may use or distribute any of the information you supply in any way it believes appropriate without incurring any obligation to you.

Licenses of this program who wish to have information about it for the purpose of enabling: (i) the exchange of information between independently created programs and other programs (including this one) and (ii) the mutual use of the information which has been exchanged, should contact:

IBM Corporation  
2Z4A/101  
11400 Burnet Road  
Austin, TX 78758 U.S.A.

Such information may be available, subject to appropriate terms and conditions, including in some cases, payment of a fee.

The licensed program described in this document and all licensed material available for it are provided by IBM under terms of the IBM Customer Agreement, IBM International Program License Agreement or any equivalent agreement between us.

Information concerning non-IBM products was obtained from the suppliers of those products, their published announcements or other publicly available sources. IBM has not tested those products and cannot confirm the accuracy of performance, compatibility or any other claims related to non-IBM products. Questions on the capabilities of non-IBM products should be addressed to the suppliers of those products.

All statements regarding IBM's future direction or intent are subject to change or withdrawal without notice, and represent goals and objectives only.

This information contains examples of data and reports used in daily business operations. To illustrate them as completely as possible, the examples include the names of individuals, companies, brands, and products. All of these names are fictitious and any similarity to the names and addresses used by an actual business enterprise is entirely coincidental.

If you are viewing this information softcopy, the photographs and color illustrations may not appear.

# Trademarks

IBM, the IBM logo, and ibm.com are trademarks or registered trademarks of International Business Machines Corporation in the United States, other countries, or both. If these and other IBM trademarked terms are marked on their first occurrence in this information with a trademark symbol (® or ™), these symbols indicate U.S. registered or common law trademarks owned by IBM at the time this information was published. Such trademarks may also be registered or common law trademarks in other countries. A current list of IBM trademarks is available on the Web at "[Copyright and trademark information](http://www.ibm.com/legal/copytrade.shtml)" at [www.ibm.com/legal/copytrade.shtml](http://www.ibm.com/legal/copytrade.shtml)

Adobe, the Adobe logo, PostScript, and the PostScript logo are either registered trademarks or trademarks of Adobe Systems Incorporated in the United States, and/or other countries.

Intel, Intel logo, Intel Inside, Intel Inside logo, Intel Centrino, Intel Centrino logo, Celeron, Intel Xeon, Intel SpeedStep, Itanium, and Pentium are trademarks or registered trademarks of Intel Corporation or its subsidiaries in the United States and other countries.

Microsoft, Windows, Windows NT, and the Windows logo are trademarks of Microsoft Corporation in the United States, other countries, or both.

Java and all Java-based trademarks and logos are trademarks of Sun Microsystems, Inc. in the United States, other countries, or both.

Linux is a registered trademark of Linus Torvalds in the United States, other countries, or both.

UNIX is a registered trademark of The Open Group in the United States and other countries.

Other company, product, or service names may be trademarks or service marks of others.

