

The Mainframe “Gas Gauge” Manual



Trademarks

The following are trademarks of the International Business Machines Corporation in the United States and/or other countries.

IBM*
IBM (logo)*
developerWorks*
System z
System z9
z9

* Registered trademarks of IBM Corporation

The following are trademarks or registered trademarks of other companies.

Intel, Intel logo, Intel Inside, Intel Inside logo, Intel Centrino, Intel Centrino logo, Celeron, Intel Xeon, Intel SpeedStep, Itanium, and Pentium are trademarks or registered trademarks of Intel Corporation in the United States, other countries, or both.

Java and all Java-based trademarks and logos are trademarks of Sun Microsystems, Inc., in the United States, other countries or both.

Linux is a registered trademark of Linus Torvalds in the United States, other countries, or both.

UNIX is a registered trademark of The Open Group in the United States and other countries.

Microsoft, Windows, Windows NT and the Windows logo are trademarks of Microsoft Corporation in the United States, other countries, or both.

Red Hat, the Red Hat "Shadow Man" logo, and all Red Hat-based trademarks and logos are trademarks or registered trademarks of Red Hat, Inc., in the United States and other countries.

SET and Secure Electronic Transaction are trademarks owned by SET Secure Electronic Transaction LLC.

* All other products may be trademarks or registered trademarks of their respective companies.

Notes:

Performance is in Internal Throughput Rate (ITR) ratio based on measurements and projections using standard IBM benchmarks in a controlled environment. The actual throughput that any user will experience will vary depending upon considerations such as the amount of multiprogramming in the user's job stream, the I/O configuration, the storage configuration, and the workload processed. Therefore, no assurance can be given that an individual user will achieve throughput improvements equivalent to the performance ratios stated here.

IBM hardware products are manufactured from new parts, or new and serviceable used parts. Regardless, our warranty terms apply.

All customer examples cited or described in this presentation are presented as illustrations of the manner in which some customers have used IBM products and the results they may have achieved. Actual environmental costs and performance characteristics will vary depending on individual customer configurations and conditions.

This publication was produced in the United States. IBM may not offer the products, services or features discussed in this document in other countries, and the information may be subject to change without notice. Consult your local IBM business contact for information on the product or services available in your area.

All statements regarding IBM's future direction and intent are subject to change or withdrawal without notice, and represent goals and objectives only.

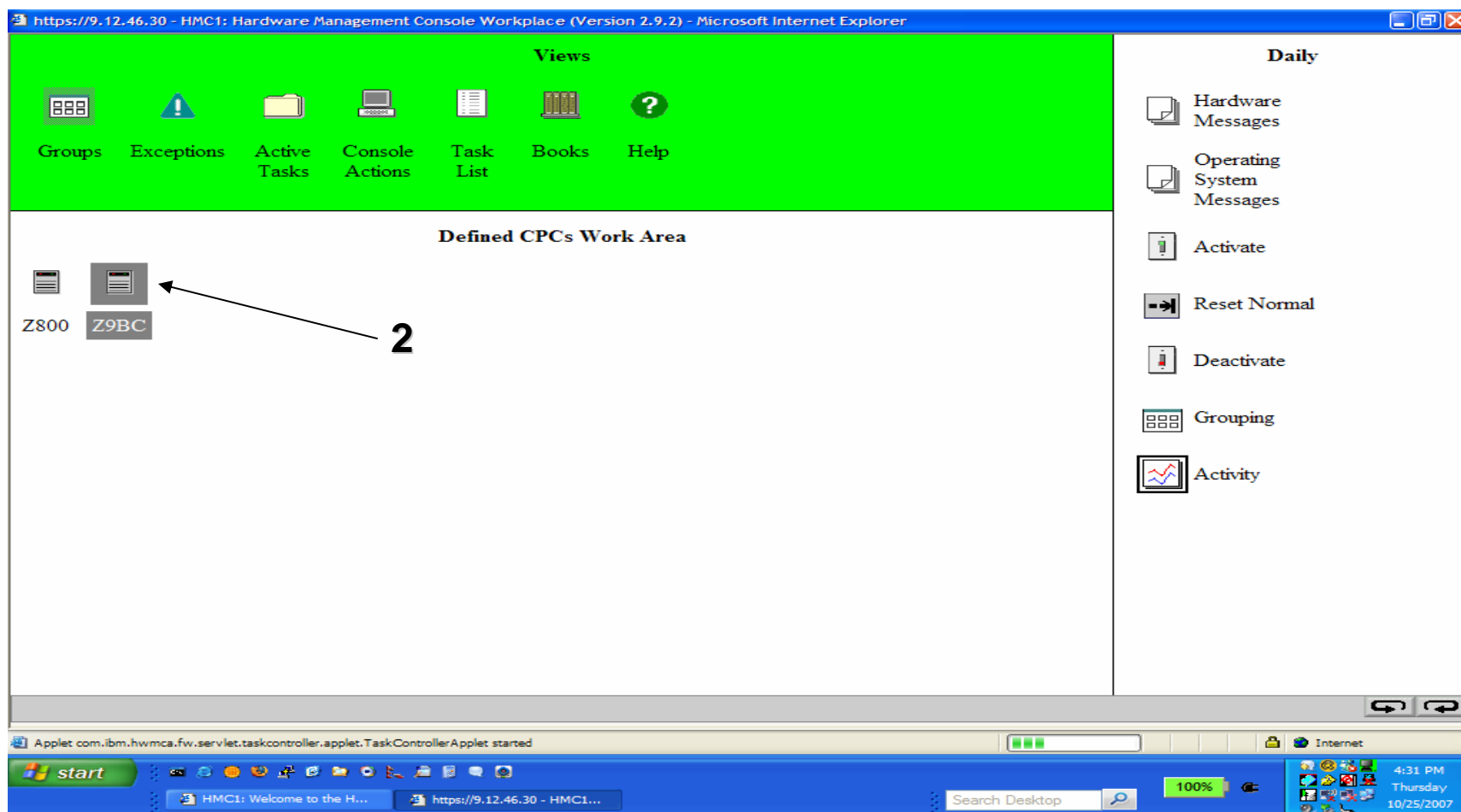
Information about non-IBM products is obtained from the manufacturers of those products or their published announcements. IBM has not tested those products and cannot confirm the performance, compatibility, or any other claims related to non-IBM products. Questions on the capabilities of non-IBM products should be addressed to the suppliers of those products.

Prices subject to change without notice. Contact your IBM representative or Business Partner for the most current pricing in your geography.

The Mainframe “Gas Gauge” Manual

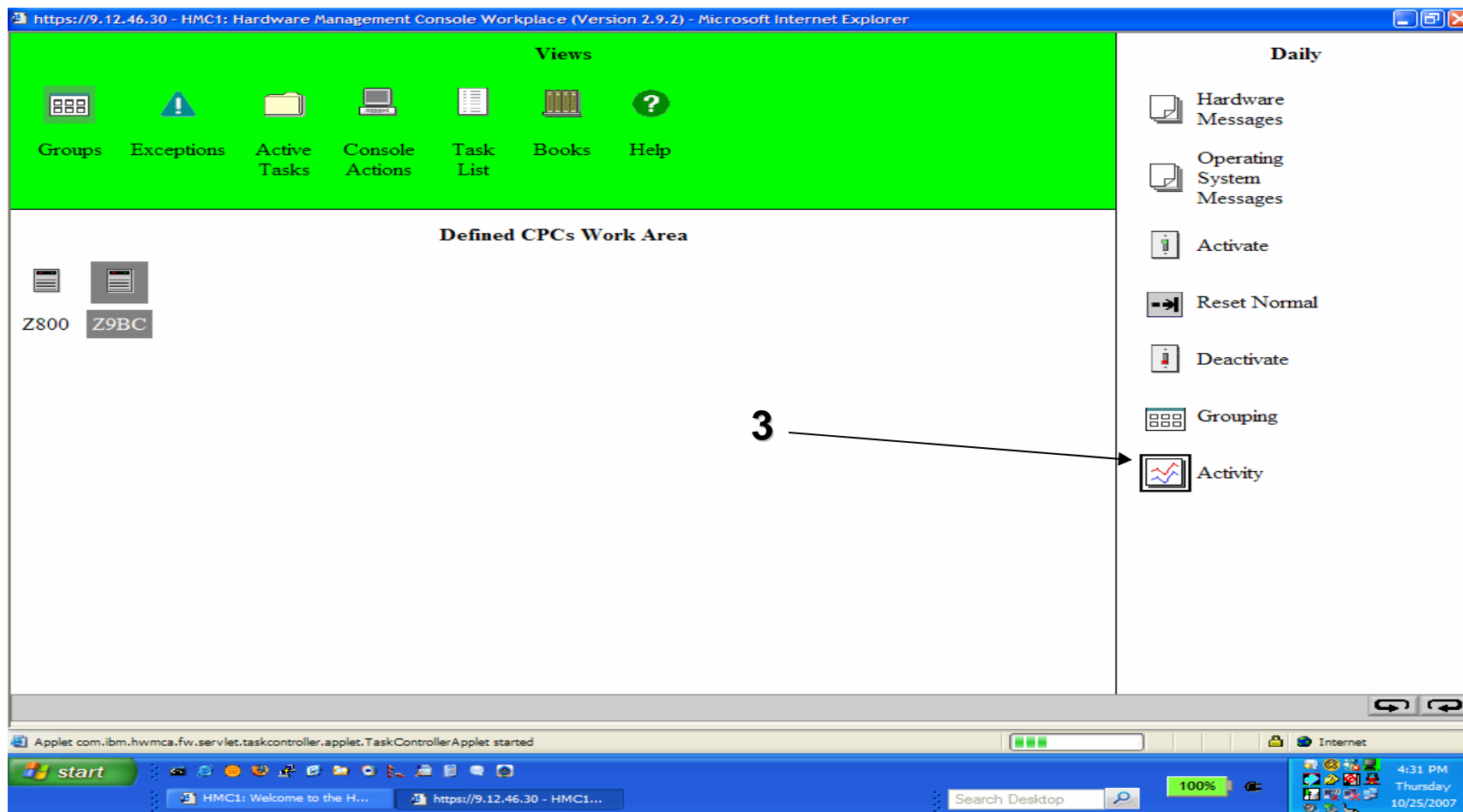
- Mainframe power and temperature monitoring information is available using the System Activity Display (SAD) produced by the Hardware Management Console (HMC).
- In order to use this, the mainframe must be an IBM® System z9™ and must be running Driver 67 level licensed internal code.
 - Driver 67 is on all machines shipped after May 11, 2007
 - It can normally be applied non-disruptively to machines shipped prior to May 11, 2007
 - Driver 67 delivered new functions to IBM System z9 Enterprise Class (z9™ EC) (GA3) and IBM System z9 Business Class (z9 BC) (GA2)
 - Contact your IBM Service Rep if you need a driver upgrade
- **Step “0” Log on to the HMC and drive**

The HMC: Pick your System



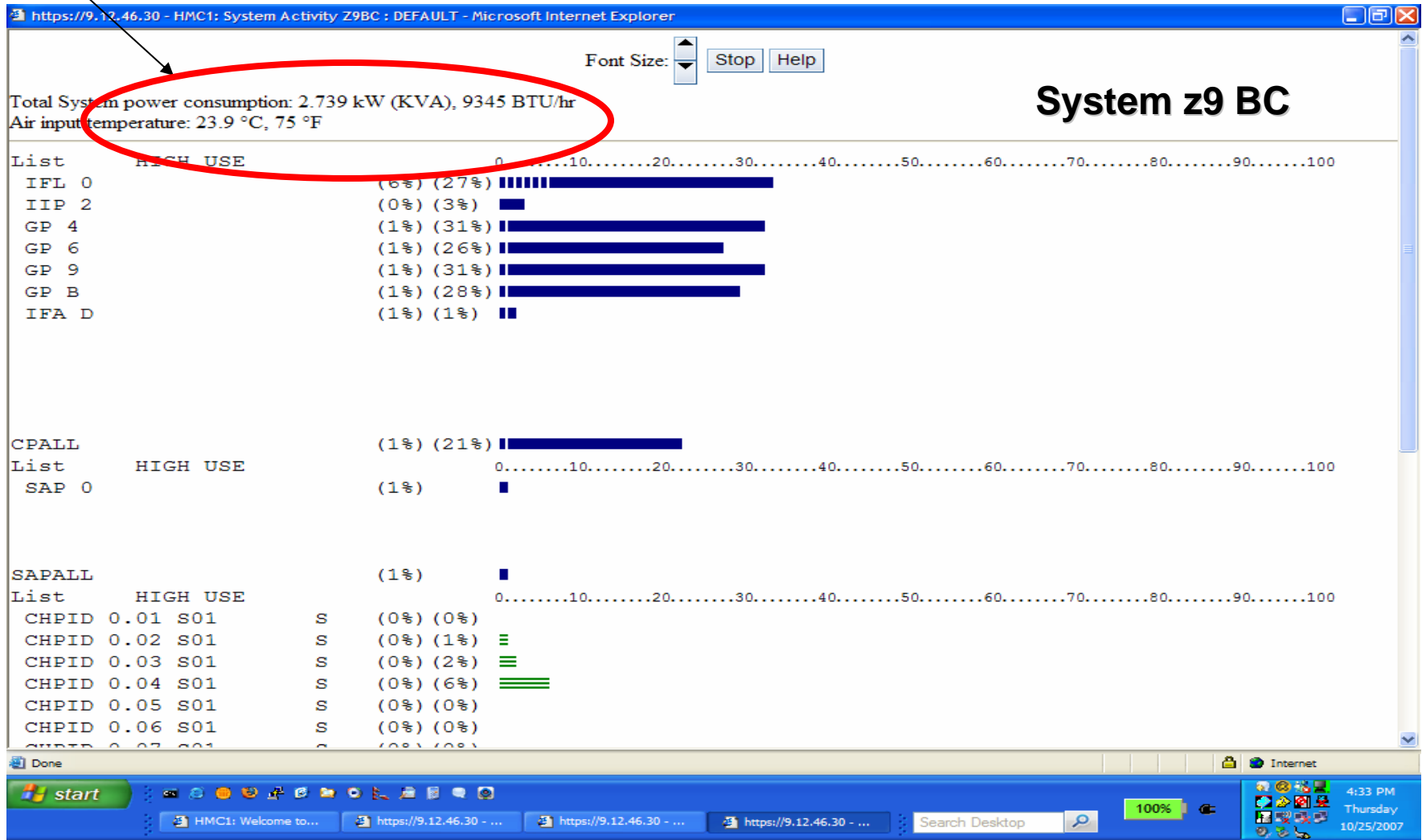
1. Select "Groups",
2. "Defined CPC's" will display the "Defined CPCs Work Area", **select the CPC** that you want to monitor, in this case z9 BC, (so that the correct CPC icon is grayed-out), on the right hand side of the screen ensure that the "Daily" tasks pane is showing

The HMC: Select Activity



3. Double-click selecting the "Activity" icon in the "Daily" tasks pane.

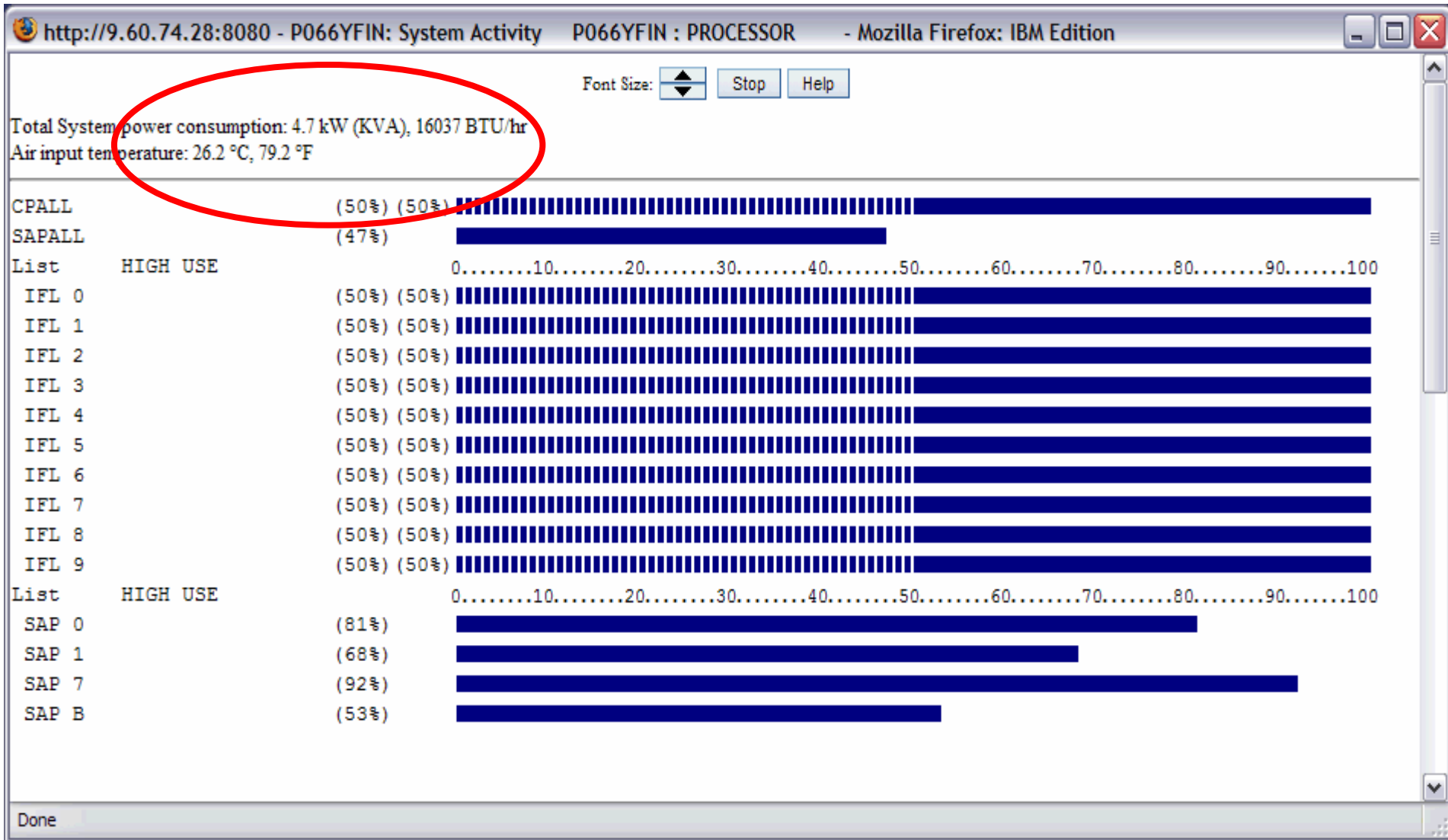
KW, BTU/hr and Inlet temp. The Mainframe "Gas Gauge"



Once the SAD is running, you can see the power and cooling figures at the top of the display. These numbers are recorded every 15 seconds by service element.

Example: System Activity Display

z9 EC, model S18, all IFL machine running 100%



Energy Efficient Mainframe Resources

- **IT Optimization:**

- http://www-03.ibm.com/systems/z/energy_efficiency/

- **Spaces / Collaboration Group**

- **IBM developerWorks® right side of home page (spaces)**

- <http://www-128.ibm.com/developerworks/spaces/greenmainframe>

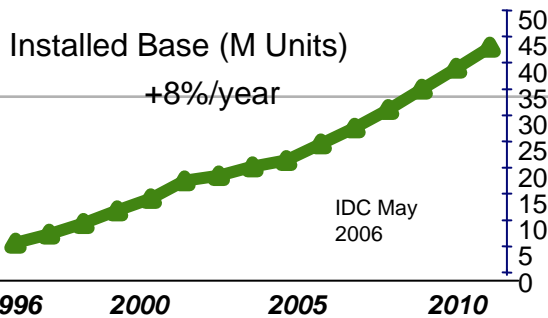
- **Questions or success stories:**

- David F. Anderson PE

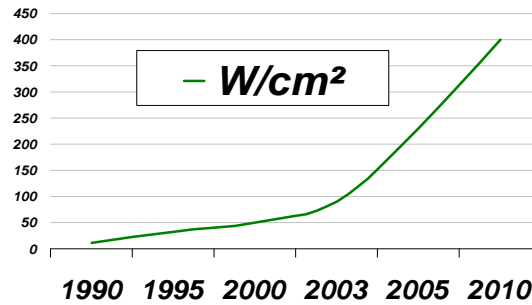
- Green Consultant**

- dfa@us.ibm.com

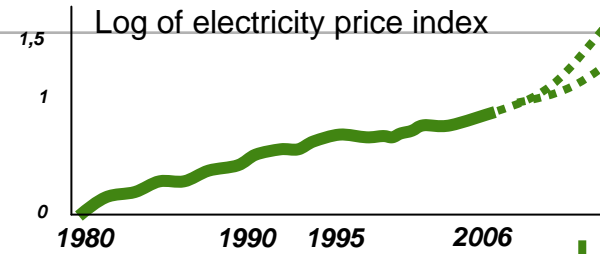
Increased number of servers



Increased processor consumption



Increased cost of electricity



Energy has become significant part of the TCO, how is it consumed?

