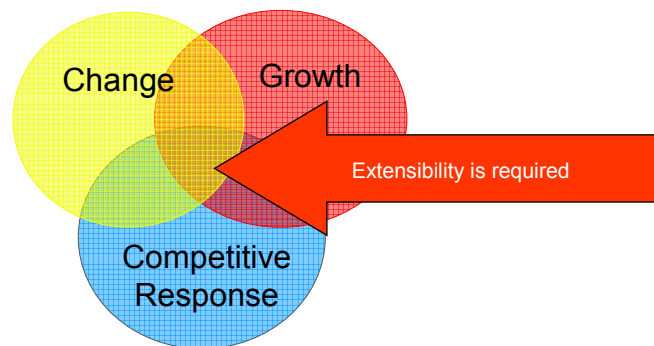


# Extending Your Mainframe for More Business Value

Affordable Business Growth  
with System z

## Extensibility, A Definition *from wikipedia*

- In software engineering, **extensibility** is a system design principle where the implementation takes into consideration future growth. It is a systemic measure of the ability to extend a system and the level of effort required to implement the extension. Extensions can be through the addition of new functionality or through modification of existing functionality. The central theme is to provide for change while minimizing impact to existing system functions.



System z Has Extensibility built in...

## Extensibility – Two Challenges

- How can we extend the business capability quickly

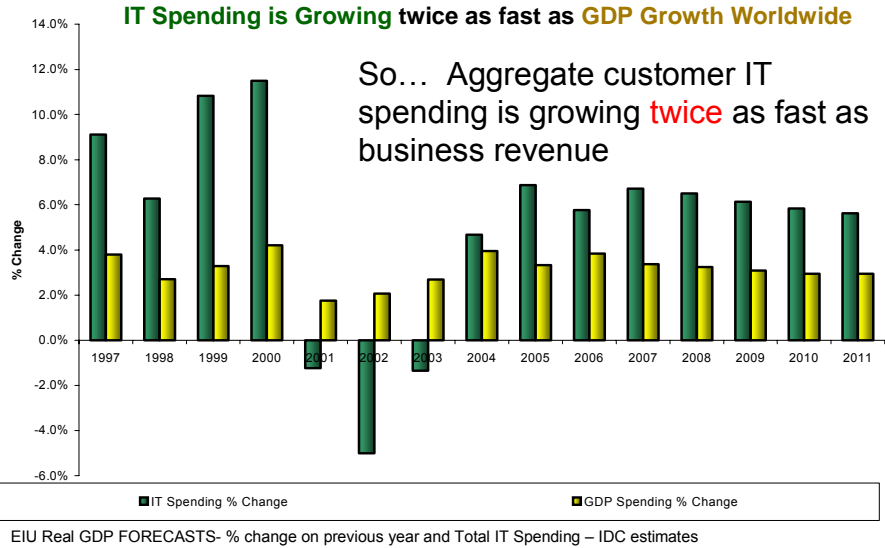
and

- Prevent I/T expenses from growing faster than revenue

## Mainframe Extension Is a Winning Strategy

- Extension delivers new business capability *faster*
  - ▶ Building on the investments in I/T, data center and people skills
- Extension is a key cost containment strategy
  - ▶ IT costs growing twice as fast as business revenue due to business imperatives and distributed deployments
- Mainframe extension can help reduce IT spending growth from **twice** business revenue growth to **equal** business revenue growth

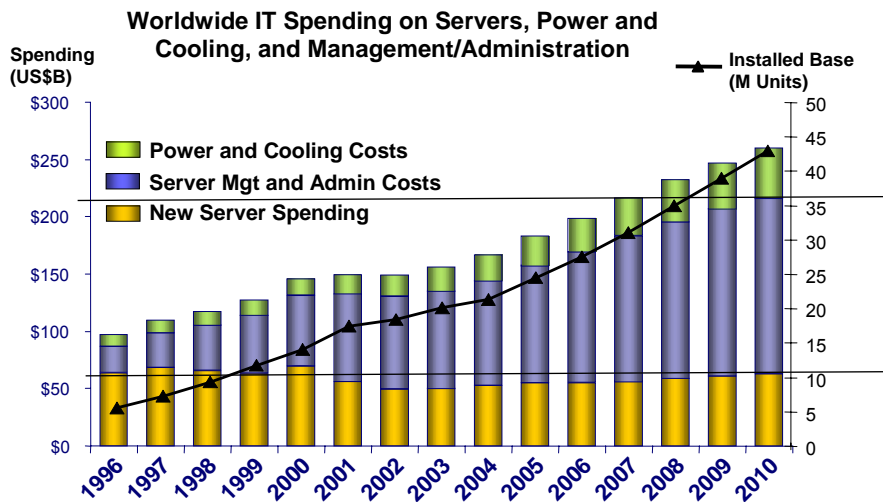
## Top Down Analysis: IT Spending Growth



00 - Affordable Business Growth with System z v1.5.ppt

5

## Distributed Scale Out is a Contributing Factor



00 - Affordable Business Growth with System z v1.5.ppt

Source: IDC, 2006

6

## A Growing Mainframe Customer is a Business to be Emulated

- A survey of 585 large or growing IBM mainframe customers:
  - ▶ Average business revenue growth **14.6%**
  - ▶ Average profit growth 21.3%
  - ▶ Average MIPS growth 23.5%
  - ▶ Average mainframe HW and SW spending growth **6.4%**
- These customers are extending their existing mainframes to deliver new business capability while constraining IT spending growth to **half** of business revenue growth

00 - Affordable Business Growth with System z v1.5.ppt

7

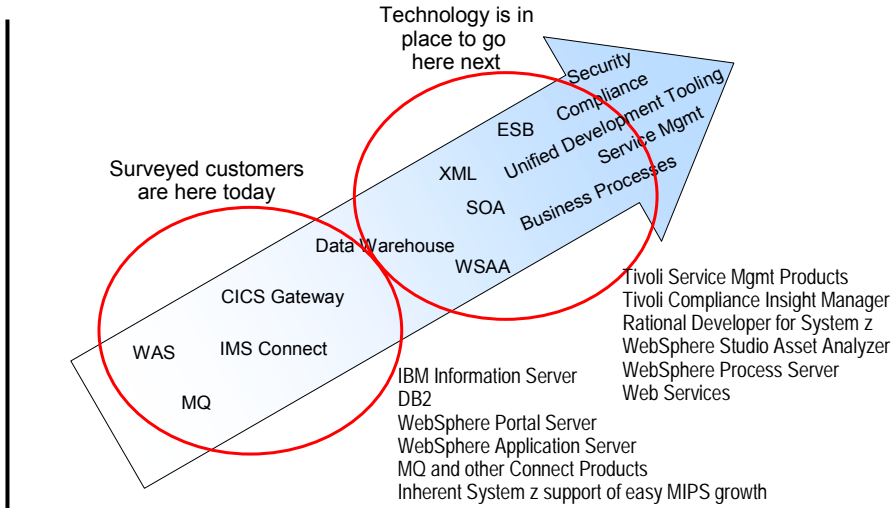
## State of Mainframe Customers

- Impressive numbers from an IBM survey of top mainframe customers
  - ▶ 59 out of top 60 global 500 banks
  - ▶ 18 out of top 20 global 500 insurance companies
  - ▶ 7 out of top 9 global healthcare companies
  - ▶ 7 out of top 9 global retailers
  - ▶ All top US life, property, and casualty insurance companies in 2007 Fortune 500
- ▶ Average mainframe capacity 15,000 MIPS and growing
- ▶ Revenue is growing twice as fast as mainframe costs
  - Compared with “IT Spending is Growing twice as fast as GDP Growth Worldwide”

00 - Affordable Business Growth with System z v1.5.ppt

9

## Technologies are in Place for Mainframe Extension Solutions



00 - Affordable Business Growth with System z v1.5.ppt

10

## Mainframe Extension Solutions Help Deliver New Business Capability Faster

- Organic Growth – Easy Growth of Existing Workload
- Extend Access Channels with SOA
- New Data Workloads on System z
- Deliver Business Insight with a Data Warehouse on System z
- Extend Connectivity with a Mainframe Communications Backbone
- Consolidate Workloads to Reduce Costs
- Extend IT Service Management
- Extend Data Security on the Mainframe
- Extend Development Team Productivity

Today we'll take a closer look at these extension solutions and the mainframe technologies behind them...

00 - Affordable Business Growth with System z v1.5.ppt

11

## Mainframe Extension Solution – Organic Growth

- **Easy Growth of Existing Workload**
- **Large enterprises grow at 10%+ annually**
  - ▶ Top 25 Industry Leading Companies in the Fortune Global 500 grew 13% annually from 2005 to 2007
  - ▶ Top 59 Global Banks grew 22% annually in 2006
- **Key growth areas**
  - ▶ Expansion in geography and channels
  - ▶ Expansion in market segments
  - ▶ Mergers and acquisitions
- **Growing pains and requirements**
  - ▶ Business growth drives transaction growth
  - ▶ Need to seamlessly scale up workload capacity

00 - Affordable Business Growth with System z v1.5.ppt

12

## Easy Organic Growth on the Mainframe

- **System z designed to scale easily**
  - ▶ Non-disruptive capacity on demand
  - ▶ System automatically uses new processor, memory, and storage capacity
- **The cost of running incremental workload on the mainframe goes down as the total workload grows**
  - ▶ Mainframe design and IBM pricing policies favor the addition of more workload
  - ▶ Special hardware pricing for qualified types of organic growth
  - ▶ Lower software costs per transaction as workload grows
  - ▶ Labor costs hold steady as workload grows
- **Customers have learned that organic growth on the mainframe can be the most cost efficient choice**

00 - Affordable Business Growth with System z v1.5.ppt

13

## Introducing Service Oriented Finance

**We are a traditional bank with branch offices throughout the country.**

**Banking competitors and non-bank specialists are taking away our customers.**



**Service Oriented Finance  
CEO**

00 - Affordable Business Growth with System z v1.5.ppt

14

## Service Oriented Finance

**Our customers demand greater choice, and personal security and control in their banking relationships.**

**We need a next generation banking system!**



**Marketing**

00 - Affordable Business Growth with System z v1.5.ppt

15

## Service Oriented Finance

But we've invested a lot of money in our current IT infrastructure.



Service Oriented Finance  
CIO

00 - Affordable Business Growth with System z v1.5.ppt

16

## The Mainframe – At the Center of Next Generation Solutions

- Most core business systems already run on the mainframe at the heart of the business
  - ▶ Represent huge investments
  - ▶ Key to ongoing business operations
- The modern mainframe is designed to be extensible so it can play a central role in NextGen solutions
  - ▶ Modern development tools for speed to value, flexibility, deployment, programmer productivity and reduced cost
- The mainframe delivers superior qualities of continuous operations, rapid scale up, and security
- The mainframe achieves the lowest TCO for next generation solutions

00 - Affordable Business Growth with System z v1.5.ppt

17



## Mainframe Extension Solutions Achieve the Lowest Cost of Acquisition

Scenarios	Cost of Distributed vs. z	Distributed Cost Ratio
<b>Mainframe Extension</b>		
- Automobile Manufacturer	21.0M vs 0.8M	<b>26.0x</b>
- WebSphere Case Study	5.3M vs 3.0M	<b>1.8x</b>
- Major Retailer	8.3M vs 7.0M	<b>1.2x</b>
- SAP Database Server	4.5M vs 2.3M	<b>2.0x</b>
- Data Warehouse	10.4M vs 3.7M	<b>2.8x</b>
<b>Linux Consolidation</b>		
- IBM IGS	901.9M vs 521.2M	<b>1.7x</b>
- Brokerage Firm (Power)	12.7M vs 7.8M	<b>1.6x</b>
- Brokerage Firm (Floor)	25.5M vs 10.7M	<b>2.4x</b>
- Major Bank	46.9M vs 19.9M	<b>2.4x</b>

**2.0X**

Note: Automobile Manufacturer was a special case

00 - Affordable Business Growth with System z v1.5.ppt

18

## “Specialty Engines” Reduce Cost for New Workloads

- Special assist processors for System z
  - ▶ For Java workloads (zAAP)
  - ▶ For selected DB2 workloads (zIIP)
  - ▶ For Linux workloads (IFL)
- Attractive pricing
  - ▶ Hardware is \$125K per processor one time charge
    - \$125K for a 580 MIP processor
  - ▶ No charge for IBM software running on zAAP/zIIP
  - ▶ IBM software running on IFL pays 100 PVU's (same as Intel dual core)
  - ▶ Free upgrade to next generation!
- Requirements
  - ▶ Max number of zAAP =< number of general purpose processors
  - ▶ Max number of zIIP =< number of general purpose processors
  - ▶ No limit on the number of IFL's



00 - Affordable Business Growth with System z v1.5.ppt

19

## Which Workloads Can Benefit From Specialty Processors?

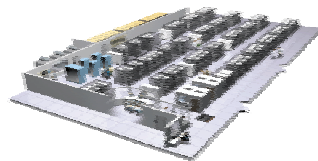
- What workloads can be run on a zAAP?
  - ▶ Java processing
    - Up to 85%
- What workloads can be run on a zIIP?
  - ▶ Queries received via DRDA Remote Access Protocol (**Data base server** scenarios)
    - Up to 40%
  - ▶ Parallel queries (**Data Warehouse** scenario)
    - Up to 80%
  - ▶ Some of index maintenance utilities
  - ▶ IPsec and XML processing
- What workloads can be run on an IFL?
  - ▶ 100% of **Linux** workloads

00 - Affordable Business Growth with System z v1.5.ppt

20

## An Inconvenient Truth!

### Equivalent CO<sub>2</sub> Emissions in one year



10,000 sq ft at 125  
watts/ft<sup>2</sup> @ \$0.09 per  
kWh

\$985K per year

**11,498 tons of CO<sub>2</sub>**  
per year

==

368 Chevy Tahoes



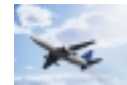
==

9,424 refrigerators



==

10,549 round trips  
NY to LA



==

78,753 75 watt light  
bulbs running 8 hrs/day



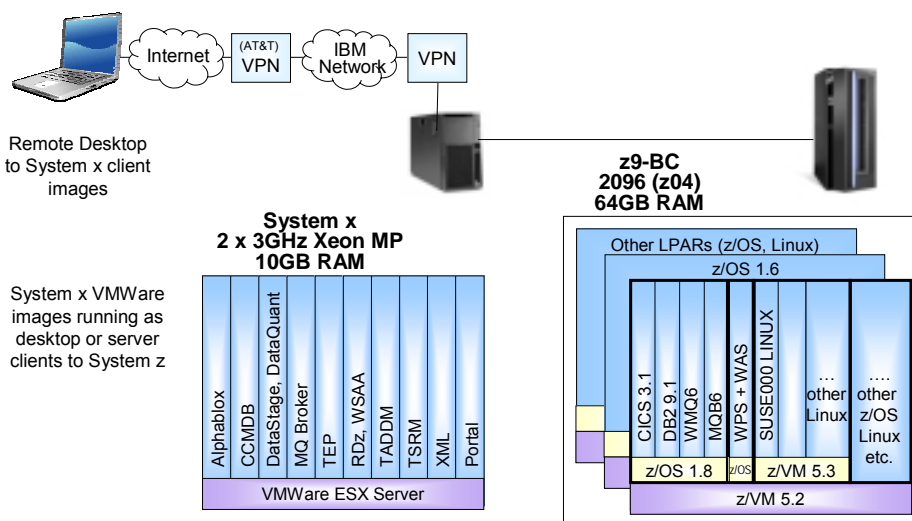
00 - Affordable Business Growth with System z v1.5.ppt

21

## The Value of Mainframe Computing

- Mainframe Extension Solutions meet customer requirements at lowest TCO
- SOA can help you reuse your existing mainframe investments
- Consolidation is a proven way to save money and simplify operations
- Mainframe specialty processors and disaster recovery are a bargain
- Distributed architecture is not designed for enterprise-class operation
- Mainframes have a much lower environmental impact

## DEMO: Architecture



## Our Agenda Today

Agenda	
30 minutes	Affordable Business Growth with System z
45 minutes	Extend Access Channels with SOA
45 minutes	New Data Workloads on System z
15 minutes	<i>Break</i>
45 minutes	Deliver Business Insight with a Data Warehouse on System z
30 minutes	Extend Connectivity with a Mainframe Communications Backbone
60 minutes	<i>Lunch</i>
45 minutes	Consolidate Workloads to Reduce Cost
30 minutes	Extend IT Service Management
20 minutes	Extend Data Security on the Mainframe
15 minutes	<i>Break</i>
45 minutes	Extend Development Team Productivity
15 minutes	Wrapup

