



Extending Your Mainframe for More Business Value

Affordable Business Growth
with System z

Quiz

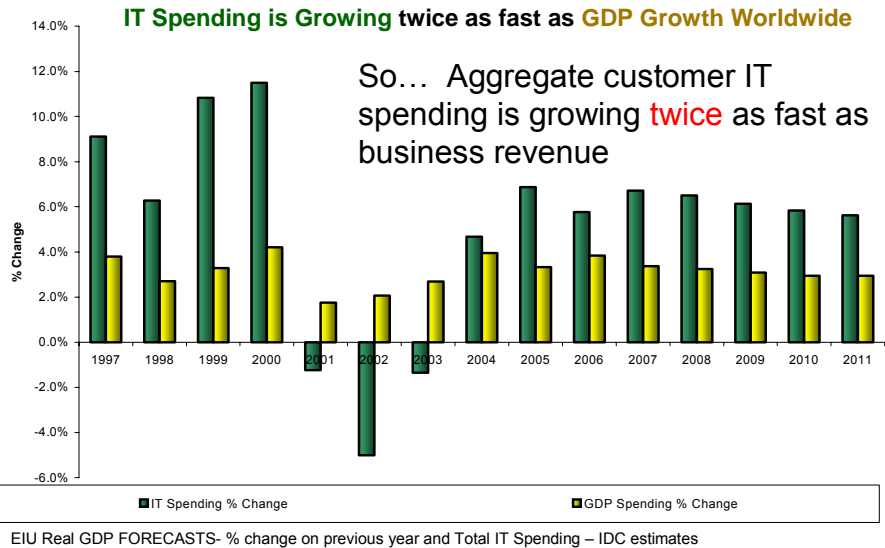
How fast are IT costs growing?

A: Slower than business revenue growth

B: About equal to business revenue growth

C: Faster than business revenue growth

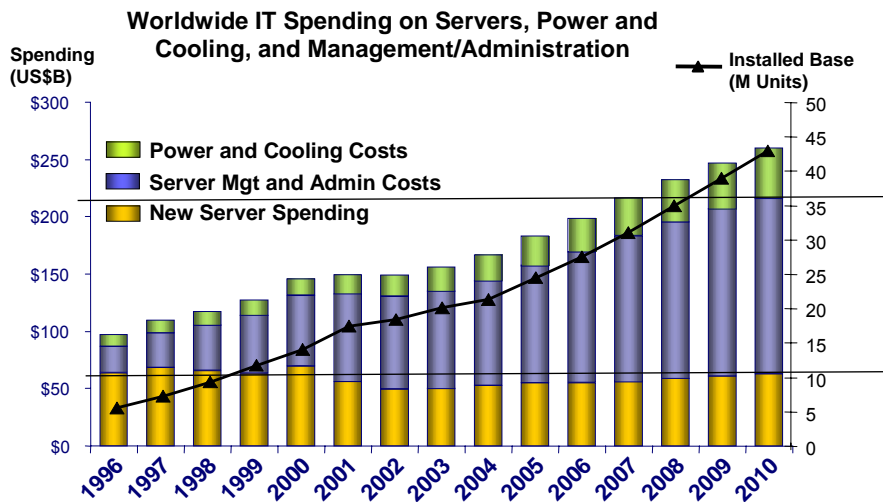
Top Down Analysis: IT Spending Growth



00 - Affordable Business Growth with System z v2.1.ppt

3

Rising Operational Costs For Distributed Servers Are a Contributing Factor



00 - Affordable Business Growth with System z v2.1.ppt

Source: IDC, 2006

4

Two Challenges

How can we

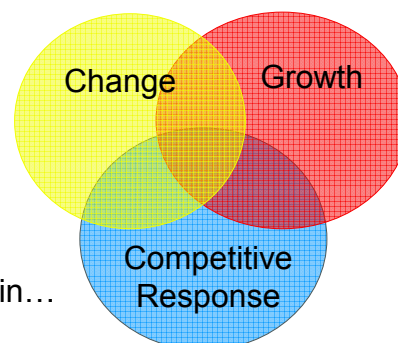
- Extend business capability quickly?

and

- Prevent I/T expenses from growing faster than business revenue?

Extensibility, A Definition *from wikipedia*

- In software engineering, **extensibility** is a system design principle where the implementation takes into consideration future growth. It is a systemic measure of the ability to extend a system and the level of effort required to implement the extension.



System z Has Extensibility built in...

Mainframe Extension Is a Winning Strategy

- Extension delivers new business capability *faster*
 - ▶ Building on the investments in I/T, data center and people skills
- Extension is a key cost containment strategy
 - ▶ IT costs growing twice as fast as business revenue due to business imperatives and distributed deployments
- Mainframe extension can help reduce IT spending growth from **twice** business revenue growth to **equal** business revenue growth

00 - Affordable Business Growth with System z v2.1.ppt

7

A Growing Mainframe Customer is a Business to be Emulated

- A survey of 585 large or growing IBM mainframe customers:
 - ▶ Average business revenue growth **14.6%**
 - ▶ Average profit growth 21.3%
 - ▶ Average MIPS growth 23.5%
 - ▶ Average mainframe HW and SW spending growth **6.4%**
- These customers are extending their existing mainframes to deliver new business capability while constraining IT spending growth to **half** of business revenue growth

00 - Affordable Business Growth with System z v2.1.ppt

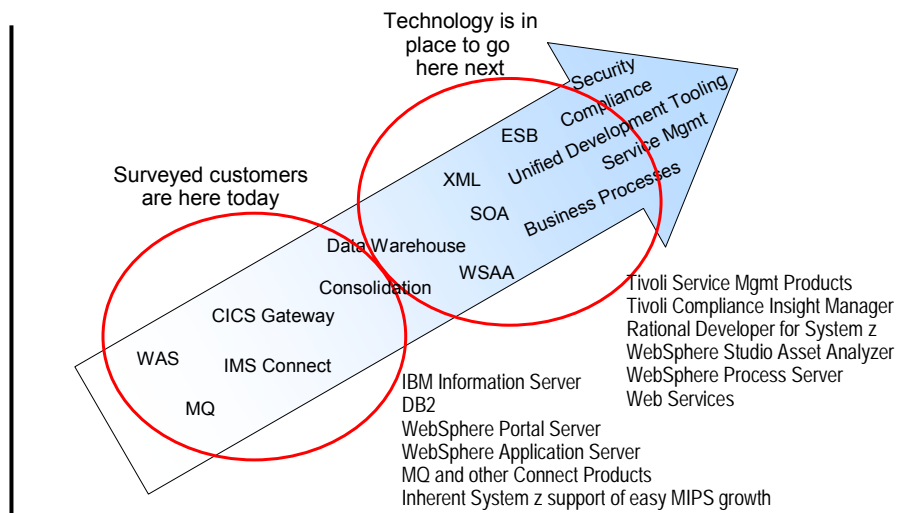
8

State of Mainframe Customers

- Impressive numbers from an IBM survey of top mainframe customers
 - ▶ 59 out of top 60 global 500 banks
 - ▶ 18 out of top 20 global 500 insurance companies
 - ▶ 7 out of top 9 global healthcare companies
 - ▶ 7 out of top 9 global retailers
 - ▶ All top US life, property, and casualty insurance companies in 2007 Fortune 500

- ▶ Average mainframe capacity 15,000 MIPS and growing
- ▶ Revenue is growing twice as fast as mainframe costs
 - Compared with “IT Spending is Growing twice as fast as GDP Growth Worldwide”

Technologies Are in Place for Mainframe Extension Solutions



Mainframe Extension Solutions Help Deliver New Business Capability Faster

- Organic Growth – Easy Growth of Existing Workload
- Extend Access Channels with SOA
- New Data Workloads on System z
- Deliver Business Insight with a Data Warehouse on System z
- Extend Connectivity with a Mainframe Communications Backbone
- Consolidate Workloads to Reduce Costs
- Extend IT Service Management
- Extend Data Security on the Mainframe
- Extend Development Team Productivity

Today we'll take a closer look at these extension solutions and the mainframe technologies behind them...

00 - Affordable Business Growth with System z v2.1.ppt

12

Mainframe Extension Solution – Organic Growth

- Easy Growth of Existing Workload
- Large enterprises grow at 10%+ annually
 - ▶ Top 25 Industry Leading Companies in the Fortune Global 500 grew \$13% annually from 2005 to 2007
 - ▶ Top 59 Global Banks grew 22% annually in 2006
- Key growth areas
 - ▶ Expansion in geography and channels
 - ▶ Expansion in market segments
 - ▶ Mergers and acquisitions
- Growing pains and requirements
 - ▶ Business growth drives transaction growth
 - ▶ Need to seamlessly scale up workload capacity

00 - Affordable Business Growth with System z v2.1.ppt

13

Easy Organic Growth on the Mainframe

- System z designed to scale easily
 - ▶ Non-disruptive capacity on demand
 - ▶ System automatically uses new processor, memory, and storage capacity
- The cost of running incremental workload on the mainframe goes down as the total workload grows
 - ▶ Mainframe design and IBM pricing policies favor the addition of more workload
 - ▶ Special hardware pricing for qualified types of organic growth
 - ▶ Lower software costs per transaction as workload grows
 - ▶ Labor costs hold steady as workload grows
- **Customers have learned that organic growth on the mainframe can be the most cost efficient choice**

Introducing Service Oriented Finance

We are a traditional bank with branch offices throughout the country.

Banking competitors and non-bank specialists are taking away our customers.



**Service Oriented Finance
CEO**

Service Oriented Finance

Our customers demand greater choice, and personal security and control in their banking relationships.

We need a next generation banking system!



Marketing

Service Oriented Finance

But we've invested a lot of money in our current IT infrastructure.



**Service Oriented Finance
CIO**

The Mainframe – At the Center of Next Generation Solutions

- Most core business systems already run on the mainframe at the heart of the business
 - ▶ Represent huge investments
 - ▶ Key to ongoing business operations
- The modern mainframe is designed to be extensible so it can play a central role in NextGen solutions
 - ▶ Modern development tools for speed to value, flexibility, deployment, programmer productivity and reduced cost
- The mainframe delivers superior qualities of continuous operations, rapid scale up, and security
- The mainframe achieves the lowest TCO for next generation solutions

00 - Affordable Business Growth with System z v2.1.ppt

18

Mainframe Extension Solutions Achieve the Lowest Cost of Acquisition

Scenarios	Cost of Distributed vs. z	Distributed Cost Ratio
Mainframe Extension		
- Automobile Manufacturer	\$21.0M vs \$0.8M	26.0x
- WebSphere Case Study	\$5.3M vs \$3.0M	1.8x
- Major Retailer	\$8.3M vs \$7.0M	1.2x
- SAP Database Server	\$4.5M vs \$2.3M	2.0x
- Data Warehouse	\$10.4M vs \$3.7M	2.8x
Linux Consolidation		
- IBM IGS	\$901.9M vs \$521.2M	1.7x
- Brokerage Firm (Power)	\$12.7M vs \$7.8M	1.6x
- Brokerage Firm (Floor)	\$25.5M vs \$10.7M	2.4x
- Major Bank	\$46.9M vs \$19.9M	2.4x

2.0X

Note: Automobile Manufacturer was a special case

00 - Affordable Business Growth with System z v2.1.ppt

19

“Specialty Engines” Reduce Cost for New Workloads

- Special assist processors for System z
 - ▶ For Java workloads (zAAP)
 - ▶ For selected DB2 workloads (zIIP)
 - ▶ For Linux workloads (IFL)
- Attractive pricing
 - ▶ \$125K for a 580 MIP processor
 - ▶ No charge for IBM software running on zAAP/zIIP
 - ▶ IBM software running on IFL costs 160 PVU's
 - ▶ Free upgrade to next generation!
- Requirements
 - ▶ Max number of zAAP =< number of general purpose pro
 - ▶ Max number of zIIP =< number of general purpose processors
 - ▶ No limit on the number of IFL's

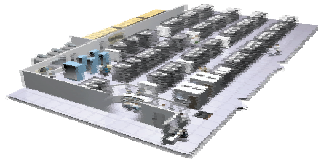


Which Workloads Can Benefit From Specialty Processors?

- What workloads can be run on a zAAP?
 - ▶ Java processing
 - Up to 85%
- What workloads can be run on a zIIP?
 - ▶ Queries received via DRDA Remote Access Protocol (**Data base server** scenarios)
 - Up to 40%
 - ▶ Parallel queries (**Data Warehouse** scenario)
 - Up to 80%
 - ▶ Some of index maintenance utilities
 - ▶ IPsec and XML processing
- What workloads can be run on an IFL?
 - ▶ 100% of **Linux** workloads

An Inconvenient Truth!

Equivalent CO₂ Emissions in one year



10,000 sq ft at 125
watts/ft² @ \$0.09 per
kWh

\$985K per year

**11,498 tons of CO₂
per year**

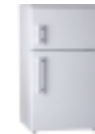
=

368 Chevy Tahoes



=

9,424 refrigerators



=

10,549 round trips
NY to LA



=

78,753 75 watt light
bulbs running 8 hrs/day



00 - Affordable Business Growth with System z v2.1.ppt

22

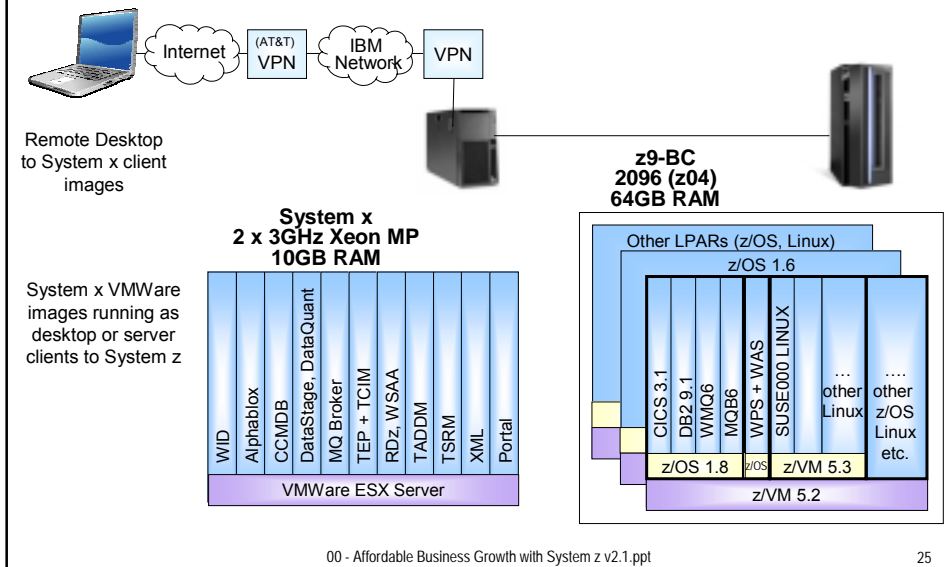
The Value of Mainframe Computing

- Mainframe Extension Solutions meet customer requirements at lowest TCO
- SOA can help you reuse your existing mainframe investments
- Consolidation is a proven way to save money and simplify operations
- Mainframe specialty processors and disaster recovery are a bargain
- Distributed architecture is not designed for enterprise-class operation
- Mainframes have a much lower environmental impact

00 - Affordable Business Growth with System z v2.1.ppt

24

DEMO: Architecture



Our Agenda Today

Agenda	
30 minutes	Affordable Business Growth with System z
45 minutes	Extend Access Channels with SOA
45 minutes	New Data Workloads on System z
15 minutes	<i>Break</i>
45 minutes	Deliver Business Insight with a Data Warehouse on System z
30 minutes	Extend Connectivity with a Mainframe Communications Backbone
60 minutes	<i>Lunch</i>
45 minutes	Consolidate Workloads to Reduce Cost
30 minutes	Extend IT Service Management
20 minutes	Extend Data Security on the Mainframe
15 minutes	<i>Break</i>
45 minutes	Extend Development Team Productivity
15 minutes	Wrapup

