

IBM PD Tools  
win top spot  
in Software  
Strategies  
analyst  
report



IBM Software Group



# Update on VSAM and the VSAM tools from IBM

*November 8, 2007*



**ON** DEMAND BUSINESS™

© 2007 IBM Corporation

November 2007

# VSAM - Agenda

- *VSAM – Today and Tomorrow*
  - ▶ Steve Branch, IBM Systems and Technology Group
- *z/OS Problem Determination Tools for VSAM*
  - ▶ Dan Brown, IBM System z Application Development Tools, Americas
- *CICS Tools for VSAM*
  - ▶ George Lees, IBM System z Application Development Tools, Americas



IBM PD Tools  
win top spot  
in Software  
Strategies  
analyst  
report



IBM Software Group



# VSAM

## Today and Tomorrow

Stephen Branch



**ON** DEMAND BUSINESS™

© 2007 IBM Corporation

November 2007

# VSAM - History

- **AM1**
- **Virtual Storage Access Method**
- **Access Method and a Data Set Type**
- **VSAM Components**
  - *VSAM Record Management*
  - *VSAM Open/Close/EOV*
  - *ICF Catalog*
  - *IDCAMS*
- **VSAM is a part of base z/OS**



## Types of VSAM Data Sets

- **The Original Three Types**
  - ***Entry Sequenced Data Set (ESDS)***
  - ***Key Sequenced Data Set (KSDS)***
  - ***Relative Record Data Set (RRDS)***



# ESDS

- Simplest VSAM data set type
- Records are in time written sequence
  - ***definition: record - logical unit of data. It has length.***
- Records have no keys
- Records are variable length
- Position of record in the data set is not important
- An ESDS is similar to physical sequential data sets (PS)



# KSDS – Key Sequenced Data Set

- **Primary access data set type**
- **Records kept in sequence by a unique key**
- **An index of keys is kept and points into the data**
- **The index is used to search for records directly**
- **Records can be accessed sequentially**
- **Records can be variable length**
- **Faster than sequential searches, slower than relative record search, good performer nonetheless**



## RRDS – Relative Record Data Set

- **Relative record position**
- **Allows fast access when key is the order number of the record**
  - *Records must be fixed length.*
  - *Records are located by multiplying the key by the record length.*
  - *RRDSs are rare in the real world.*

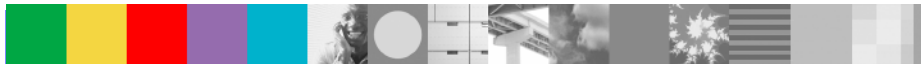
1st	2nd	3rd	4th
DEF	XYZ	GHI	DEF





## LDS – Linear Data Set

- **Similar to ESDS**
- **No concept of records**
- **Processing by Control Interval (CI)**
- **A CI is like a block**
- **DB2 first user**



## VRRDS – Variable Relative Record Data Set

- **Behaves like a RRDS, really a KSDS by key**
- **No way to compute position of record because records are variable length, so an index is used**
- **Requirement from U.S. Government**



## VSAM Data Sets

- **Only reside on DASD**
- **Must be cataloged (except for temporary VSAM datasets)**
  - *Entry in the Catalog – Catalog record*
  - *Entries in the VVDS - VVRs*
  - *Entries in the VTOC - DSCBs*



## Access Method Services (AMS)

- **AKA - IDCAMS**
- **Purpose - Define, Delete, Alter, List, and Recover data sets - especially VSAM data sets**
- **Manual - SC26-7394**
- **Invoked via JCL, TSO or can be called by an Assembler program**



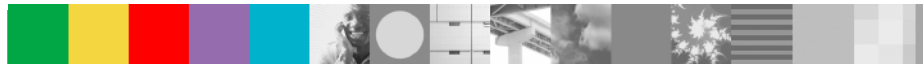
## VSAM Alternate Index - AIX

- **Provides a means to reference an ESDS by a key**
- **Provides a means to reference a KSDS by other than the primary key**
- **Clusters pointed to by an AIX are called base clusters**
- **Allows duplicate keys**
- **An AIX is a KSDS itself – it has a data and an index component**



## VSAM Enhancements Through the Years

- **Compression for KSDSs**
- **Striping – Data is spread across volumes**
- **Extended Addressability - allows for data sets greater than 4 gigabytes**
- **Partial Release – releases unused space at the end the data set**
- **System Managed Buffering – allows the system to choose the buffering technique**



# VSAM Record Level Sharing and Transactional VSAM

- **Record Level Sharing (RLS)**
  - **Allows record level sharing between Sysplex**
  - **Done using the coupling facility**
  - **provides locking, two-phase commit, and logging facilities in an CICS online environment**
- **Transactional VSAM (TVS)**
  - **provides locking, two-phase commit, and logging facilities in a batch environment**
  - **allows multiple batch update jobs to run concurrently with CICS access to the same data sets while maintaining integrity and recoverability**



## Sources of additional information

- **Manuals**

- ***SC26-7394 DFSMS Access Method Services for Catalogs***
- ***SC26-7410 DFSMS: Using Data Sets***
- ***SC26-7409 DFSMS: Managing Catalogs***
- ***SC26-7408 DFSMS Macro Instructions for Data Sets***

- **Redbooks**

- ***URL for VSAM Redbooks: [w3.itso.ibm.com/cgi-bin/searchsite.cgi?query=vsam](http://w3.itso.ibm.com/cgi-bin/searchsite.cgi?query=vsam)***
- ***SG24-6105 VSAM Demystified***

- **Hot Topics**

- ***URL: [www.ibm.com/zseries/zos/hot\\_topics.html](http://www.ibm.com/zseries/zos/hot_topics.html)***





## Summary

**VSAM is both a set of data set types and an access method that provides a rich assortment of options for your application needs.**

**VSAM is tested technology with a long history of reliability and performance.**

**z/OS customers depend upon VSAM for their business needs.**

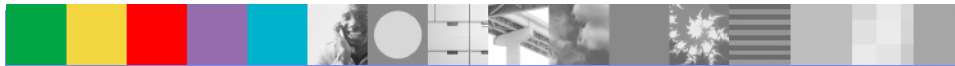


The End

**If you have questions in the future,  
please contact**

**Stephen Branch**

**[branchs@us.ibm.com](mailto:branchs@us.ibm.com)**



IBM PD Tools  
win top spot  
in Software  
Strategies  
analyst  
report



IBM Software Group



# z/OS Problem Determination and Deployment Tools For **VSAM**

*Version 8*

*Dan Brown*



**ON** DEMAND BUSINESS™

© 2007 IBM Corporation

November 2007

## IBM's Solution

- Offer a set of tools that:
  - ▶ Exploits IBM's latest software and processor technology
  - ▶ Offer wide array of key features and functions
  - ▶ Can enhance the Application Development Lifecycle
  - ▶ Provide opportunity for increased user productivity
  - ▶ Are affordably priced
  - ▶ Have flexible terms and conditions
  - ▶ Have no license keys



# File Manager for z/OS



## What is File Manager?

- Integrated suite of functions to help z/OS **application developers** work with VSAM data across a wide range of formats and storage media: browsing, finding, editing, creating, copying, printing, comparing, and erasing data
- Ideal for creating and working with application test data, or locating problems in application data files
- Functions can be accessed via interactive panels, called in REXX or DFSORT procedures, and batch jobs



# File Manager for z/OS (FM)

## ■ Key features

- ▶ Select, create, browse, copy, edit, print, and format or reformat **VSAM** data files
- ▶ Manipulate **VSAM** data using COBOL and PL/I record layouts interactively or in batch.
- ▶ Comprehensive, user-friendly, batch and interactive utilities extends standard ISPF
- ▶ Access CICS **VSAM** resources with CICS transaction
- ▶ Audit logging and data scrambling for **VSAM**

## ■ IBM Product Support

- ▶ Works with, CICS, DB2, IMS and z/OS (QSAM, VSAM, PDS, HFS) data
- ▶ CICS TS V1 to V3, IMS V7 to V10, DB2 V7 to V9

## New in FM V8.1

- **Integration with Rational Developer for System z**
- **Data scrambling support**
- **Load Module Compare**
- **File Manager edit and browse enhancements**
- **File Manager DB2, IMS and CICS enhancements**



# File Manager for z/OS (FM)

## Problem

- You want to modernise and extend your System z application inventory but it's taking too long to bring your new developers up to speed with the files and databases they need to work with

## Solution

- File Manager identifies the structure of your VSAM records and displays and allows manipulation of each field according to its data type

```

Process  Options  Help
-----
File Manager                                Utility Functions
Command ==> 6

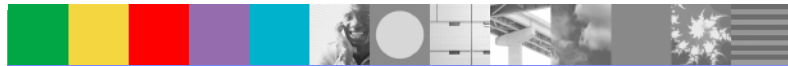
0  DBCS          Set DBCS data format for print
1  Create        Create data
2  Print         Print data
3  Copy          Copy data
4  Dslist        Catalog services
5  VTOC          Work with VTOC
6  Find/Change   Search for and change data
7  AFP           Browse AFP data
8  Storage       Browse user storage
9  Printdsn     Browse File Manager print data set
10 Loadlib      View load module information
11 Compare      Compare data
12 Audit trail   Print audit trail report
13 Copybook     View and Print

F1=Help      F2=Split      F3=Exit      F4=CRetriev  F7=Backward  F8=Forward
F9=Swap      F10=Actions   F12=Cancel

```

## Value

- Promotes understanding and speeds the development process





# Advanced Functions

- **Aimed at application developers:**
  - ▶ Format VSAM and QSAM data according to definitions in a COBOL or PL1 copybook, displayed as either:
    - A table, under field column headings
    - A single record per panel, listing field values next to field names
  - ▶ Select records with Boolean conditions
  - ▶ Select fields
  - ▶ Copy selected records and fields between data sets, and insert/delete/reformat fields
  - ▶ Create test data according to user-specific patterns
  - ▶ Compare data between data sets according to user-specified patterns

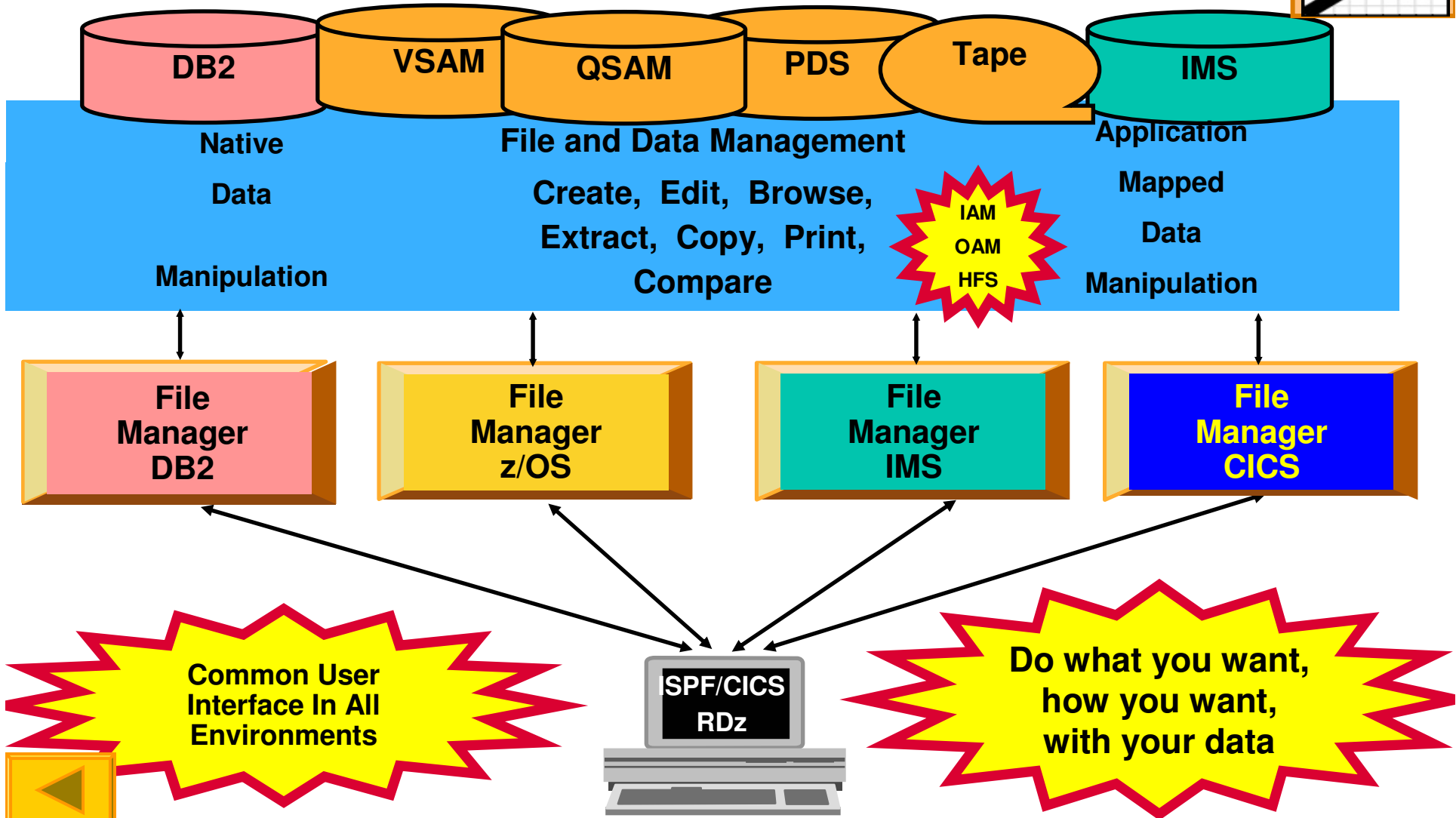
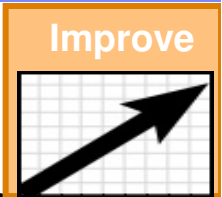


# Highlights

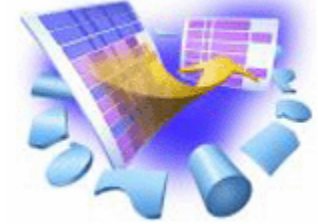
- Find and change data within specific fields
- Identify fields that contain invalid values
- Use selection criteria and/or sampling to limit the number/type of records in Browse/Edit
- Edit entire VSAM file regardless of size
- Copy or print selected records and fields
- Test data generation for VSAM based on record layouts
- Compare data between datasets using field level mapping



# File Manager - *Manage a variety of enterprise data file structures*



# File Manager z/OS Features



- Full function edit and view
  - ▶ Table
  - ▶ Single
- Flexible selection criteria
  - ▶ Work with copybooks or templates
- Edit any file regardless of size
- Create data
- Print data
- Copy data
  - ▶ File reformatting
  - ▶ Scramble fields
- Catalog services
- Work with VTOC
- Compare
  - ▶ Data
  - ▶ Load Modules
- Search for and change data
  - ▶ Insert continuation JCL statement
- View or print
  - ▶ Copybooks
  - ▶ Templates
- Modes Of Operation
  - ▶ Interactive
  - ▶ Batch
- Interfaces
  - ▶ ISPF
  - ▶ CICS
  - ▶ RDz



# File Manager Primary Option Menu

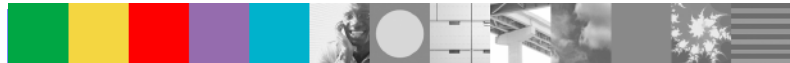
Process    Options    Help

File Manager

Primary Option Menu

Command ==> 2

0	Settings	Set processing options	User ID . . . : ALLANS2
1	View	View data	System ID : STLABF2
2	Edit	Edit data	Appl ID . . . : ISR
3	Utilities	Perform utility functions	Version . . . : 8.1.0
4	Tapes	Tape specific functions	Terminal. . . : 3278A
5	Disk/VSAM	Disk track and VSAM CI functions	Screen. . . : 1
6	OAM	Work with OAM objects	Date. . . . : 2007/09/19
7	Templates	Template and copybook utilities	Time. . . . : 06:32
8	HFS	Access Hierarchical File System	
X	Exit	Terminate File Manager	



# Edit

Process   Options   Help

File Manager

Edit Entry Panel

Command ==>

Input Partitioned, Sequential or VSAM Data Set, or HFS file:

Data set/path name 'ALLANS2.FMDEMO.VSAM' +  
 Member . . . . . \_\_\_\_\_ (Blank or pattern for member list)  
 Volume serial . . \_\_\_\_\_ (If not cataloged)  
 Start position . . \_\_\_\_\_ +  
 Record limit . . . \_\_\_\_\_ Record sampling \_  
 Inplace edit . . . \_ (Prevent inserts and deletes)

Copybook or Template:

Data set name . . 'ALLANS2.FMDEMO.COPYBOOK'  
 Member . . . . . DEMADATA (Blank or pattern for member list)

Processing Options:

Copybook/template	Start position type	Enter "/" to select option
<u>1</u> 1. Above	_ 1. Key	_ Edit template _ Type (1,2,S)
2. Previous	2. RBA	_ Include only selected records
3. None	3. Record number	_ Binary mode, reclen <u>80</u>
4. Create dynamic		_ Create audit trail



# Edit

Process    Options    Help

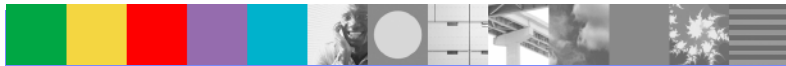
Edit		ALLANS2.FMDEMO.VSAM					Top of 78
Command ==>							Scroll PAGE
		Type ESDS	RBA			Format TABL	
REC-TYPE	NAME	EMPLOYEE-NO	AGE	SALARY	MONTH(1)		
#2	#3	#4	#5	#6	#7		
AN 1:2	AN 3:20	BI 23:2	BI 25:2	PD 27:4	BI 31:4		
<>	<----+-----1-----+----->	<----+>	<----+>	<----+--->	<----+-----1>		
*****	****	Top of data		****			
000001	01	Graham Purdy	5512	24	68000	28	
000002	01	Graham Purdy	5512	24	68000	28	
000003	01	Al Tortorice	3101	39	53000	15	
000004	01	Will Soper	4412	28	68000	5	
000005	01	Tyrone Dalais	3312	21	65000	14	
000006	02	Grant Sutherland	<u>0309</u>	<u>2373</u>	*****	<u>71124800</u>	
000007	02	Graham Purdy	<u>0309</u>	<u>2373</u>	*****	<u>71124800</u>	
000008	01	Silvano Prez	2161	55	69000	1	
000009	01	Liz Rushton	3349	40	65000	14	
000010	02	Silvano Prez	<u>5193</u>	<u>8535</u>	*****	<u>41413184</u>	
000011	02	Don Pharoah	<u>5193</u>	<u>8535</u>	*****	<u>41413184</u>	
000012	01	John Nicholls	3349	40	69000	30	
000013	01	Anna Waghorn	7812	33	65000	2	
000014	01	Merrill Bani	7876	56	58000	18	



# Edit

Process    Options    Help

Edit		ALLANS2.FMDEMO.VSAM					Top of 78	
Command ==>		X ALL					Scroll PAGE	
SHAD	Type	ESDS	RBA		Format		TABL	
REC-TYPE	NAME	EMPLOYEE-NO	AGE	SALARY	MONTH(1)			
#2	#3	#4	#5	#6	#7			
AN 1:2	AN 3:20	BI 23:2	BI 25:2	PD 27:4	BI 31:4			
<>	<-----1----->	<----+>	<----+>	<-----+>	<-----+-----1>			
*****	****	Top of data					****	
000001	01	Graham Purdy	5512	24	68000	28		
000002	01	Graham Purdy	5512	24	68000	28		
000003	01	Al Tortorice	3101	39	53000	15		
000004	01	Will Soper	4412	28	68000	5		
000005	01	Tyrone Dalais	3312	21	65000	14		
000008	01	Silvano Prez	2161	55	69000	1		
000009	01	Liz Rushton	3349	40	65000	14		
000012	01	John Nicholls	3349	40	69000	30		
000013	01	Anna Waghorn	7812	33	65000	2		
000014	01	Merrill Bani	7876	56	58000	18		
000037	01	Graham Purdy	5512	54	68000	28		
000038	01	Al Tortorice	3101	39	65000	15		
000039	01	Will Soper	4412	40	68000	5		
000040	01	Tyrone Dalais	3312	21	66000	14		





## Edit

Process    Options    Help

Edit                    ALLANS2.FMDEMO.VSAM

Top of 78

Command ==&gt; F 7812 #4

Scroll PAGE

Some shadows are off, so no records displayable

REC-TYPE	NAME	EMPLOYEE-NO	AGE	SALARY	MONTH(1)
#2	#3	#4	#5	#6	#7
AN 1:2	AN 3:20	BI 23:2	BI 25:2	PD 27:4	BI 31:4
<>	<-----1----->	<----+>	<----+>	<----+-->	<----+----1>

\*\*\*\*\*    \*\*\*\*    Top of data    \*\*\*\*

\*\*\*\*\*    \*\*\*\*    End of data    \*\*\*\*

# Edit

Process    Options    Help

```

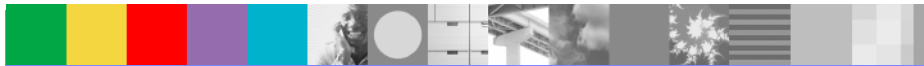
Edit                ALLANS2.FMDEMO.VSAM                Chars 7812 found
Command ==> F 40 (#2 #4 #5) ALL                Scroll PAGE
SHAD                Type ESDS                RBA                Format TABL
REC-TYPE NAME                EMPLOYEE-NO        AGE        SALARY        MONTH(1)
#2                #3                #4                #5                #6                #7
AN 1:2        AN 3:20                BI 23:2    BI 25:2    PD 27:4        BI 31:4
<>                <-----1----->                <---->    <---->    <---->    <-----1>
*****  ****  Top of data  ****
000013  01        Anna Waghorn                7812        33        65000        2
*****  ****  End of data  ****
    
```

# Edit

Process    Options    Help

```

Edit                ALLANS2.FMDEMO.VSAM                3 string(s) found
Command ==> RESET                                     Scroll PAGE
SHAD                Type ESDS      RBA                Format TABL
                   REC-TYPE NAME      EMPLOYEE-NO      AGE      SALARY      MONTH(1)
                   #2      #3              #4      #5      #6      #7
                   AN 1:2  AN 3:20      BI 23:2 BI 25:2 PD 27:4      BI 31:4
                   <>      <----+-----1----->      <----+>  <----+>  <----+-->  <----+-----1>
*****  ****  Top of data  ****
000009 01      Liz Rushton      3349      40      65000      14
000012 01      John Nicholls   3349      40      69000      30
000013 01      Anna Waghorn    7812      33      65000      2
000039 01      Will Soper      4412      40      68000      5
*****  ****  End of data  ****
    
```



# Edit

Process    Options    Help

Edit		ALLANS2.FMDEMO.VSAM					Top of 78	
Command ==>		SHAD SUP ON					Scroll PAGE	
SHAD	Type	ESDS	RBA			Format	TABL	
REC-TYPE	NAME	EMPLOYEE-NO	AGE	SALARY	MONTH(1)			
#2	#3	#4	#5	#6	#7			
AN 1:2	AN 3:20	BI 23:2	BI 25:2	PD 27:4	BI 31:4			
<>	<----+-----1-----+----->	<----+>	<----+>	<-----+-->	<-----+-----1>			
*****	****	Top of data			****			
000001	01	Graham Purdy	5512	24	68000	28		
000002	01	Graham Purdy	5512	24	68000	28		
000003	01	Al Tortorice	3101	39	53000	15		
000004	01	Will Soper	4412	28	68000	5		
000005	01	Tyrone Dalais	3312	21	65000	14		
000008	01	Silvano Prez	2161	55	69000	1		
000009	01	Liz Rushton	3349	40	65000	14		
000012	01	John Nicholls	3349	40	69000	30		
000013	01	Anna Waghorn	7812	33	65000	2		
000014	01	Merrill Bani	7876	56	58000	18		
000037	01	Graham Purdy	5512	54	68000	28		
000038	01	Al Tortorice	3101	39	65000	15		
000039	01	Will Soper	4412	40	68000	5		
000040	01	Tyrone Dalais	3312	21	66000	14		

# Edit

Process    Options    Help

Edit		ALLANS2.FMDEMO.VSAM					Top of 78
Command ==>							Scroll PAGE
SHAD	Type	ESDS	RBA		Format		TABL
REC-TYPE	NAME	EMPLOYEE-NO	AGE	SALARY	MONTH(1)		
#2	#3	#4	#5	#6	#7		
AN 1:2	AN 3:20	BI 23:2	BI 25:2	PD 27:4	BI 31:4		
<>	<-----1----->	<----+>	<----+>	<-----+>	<-----1>		
*****	****	Top of data					****
000001	01	Graham Purdy	5512	24	68000	28	
000002	01	Graham Purdy	5512	24	68000	28	
000003	01	Al Tortorice	3101	39	53000	15	
000004	01	Will Soper	4412	28	68000	5	
000005	01	Tyrone Dalais	3312	21	65000	14	
V - - - -	- - - -	REC-TYPE02	- - - -	- - - -	- - - -	- - - -	2 Line(s) suppressed
000008	01	Silvano Prez	2161	55	69000	1	
000009	01	Liz Rushton	3349	40	65000	14	
- - - - -	- - - -	REC-TYPE02	- - - -	- - - -	- - - -	- - - -	2 Line(s) suppressed
000012	01	John Nicholls	3349	40	69000	30	
000013	01	Anna Waghorn	7812	33	65000	2	
000014	01	Merrill Bani	7876	56	58000	18	
- - - - -	- - - -	REC-TYPE02	- - - -	- - - -	- - - -	- - - -	20 Line(s) suppressed
000037	01	Graham Purdy	5512	54	68000	28	

# Edit

Process    Options    Help

```

Edit                               ALLANS2.FMDEMO.VSAM                               Top of 78
Command ==> FS                               Scroll PAGE
SHAD                                     Type ESDS                               RBA                               Format TABL
      REC-TYPE NAME                               JOB-TITLE                               ADDR1                               ADDR2
      #2          #3                               #4          #5          #6  +
      AN 1:2     AN 3:20                               AN 23:14   AN 37:20   AN 57
      <>         <-----1-----> <-----1----> <-----1-----> <-----
***** **** Top of data ****
- - - - - REC-TYPE01 - - - - - 5 Line(s) suppressed
000006 02      Grant Sutherland   Developer   22 Montrose St   Thorn
000007 02      Graham Purdy       Developer   256 Hay St       Canni
- - - - - REC-TYPE01 - - - - - 2 Line(s) suppressed
000010 02      Silvano Prez           Programmer  48 Small Lane    Mt Pl
000011 02      Don Pharoah            Programmer  661 Ayton Way    Flore
- - - - - REC-TYPE01 - - - - - 3 Line(s) suppressed
000015 02      Grant Sutherland   Developer   22 Montrose St   Thorn
000016 02      Andrew Astle        Developer   44 Eagle Rise    River
000017 02      Graham Purdy       Developer   256 Hay St       Canni
000018 02      Bill Soper          Developer   84 Murchison Rd  Diane
000019 02      Tyrone Dalais       Developer   92 Smith St      Belmo
000020 02      Rod Turner          Manager     184 Alexander Dve Swan
000021 02      Clive Nealon        Manager     28 Bern Rd       Middl
    
```



## Edit

Process    Options    Help

```

Edit                ALLANS2.FMDEMO.VSAM                Rec 6 of 78
Command ==> HEX ON                                Scroll PAGE
                                                    Format SNGL
                Type ESDS                RBA 400
                                                    Top Line is 2 of 7
                                                    Length 80
Current 01: REC-TYPE02
Field      Picture Typ Start   Len   Data
 2 REC-TYPE  XX     AN     1     2    02
 2 NAME      X(20)  AN     3    20   Grant Sutherland
 2 JOB-TITLE X(14)  AN    23   14   Developer
 2 ADDR1     X(20)  AN    37   20   22 Montrose St
 2 ADDR2     X(20)  AN    57   20   Thornlie
 2 POSTCODE  X(4)   AN    77    4   6145
*** End of record ***

```



## Edit

Process    Options    Help

```

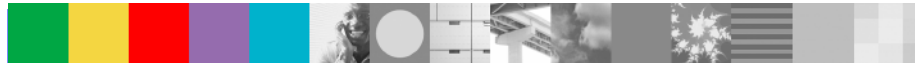
Edit                ALLANS2.FMDEMO.VSAM                Rec 6 of 78
Command ==> FOR T                Scroll PAGE
                                Type ESDS                RBA 400                Format SNGL
                                Top Line is 2                of 25
                                Length 80
Current 01: REC-TYPE02
Field      Picture Typ Start  Len  Data
 2 REC-TYPE  XX      AN    1     2   02
                                FF
                                02

 2 NAME      X(20)   AN    3    20   Grant Sutherland
                                C989A4EAA88998984444
                                79153024385931540000

 2 JOB-TITLE X(14)   AN   23   14   Developer
                                C8A89998944444
                                45553675900000

 2 ADDR1     X(20)   AN   37   20   22 Montrose St
                                FF44D99A99A84EA44444
                                22004653962502300000

```





# Edit

Process    Options    Help

```

Edit                ALLANS2.FMDEMO.VSAM                Rec 6 of 78
Command ==> HEX OFF                Scroll PAGE
                                         Format TABL
                                         Type ESDS      RBA 400
REC-TYPE NAME                JOB-TITLE        ADDR1                ADDR2
#2          #3                #4                #5                #6  +
AN 1:2     AN 3:20           AN 23:14          AN 37:20          AN 57
<>         <-----1-----> <-----1----> <-----1-----> <----+
000006 02      Grant Sutherland      Developer          22  Montrose St      Thorn
        FF      C989A4EAA88998984444  C8A89998944444  FF44D99A99A84EA44444  E8999
        02      79153024385931540000  45553675900000  22004653962502300000  38695

000007 02      Graham Purdy            Developer          256 Hay St           Canni
        FF      C988894DA98A444444444  C8A89998944444  FFF4C8A4EA4444444444  C8998
        02      79181407494800000000  45553675900000  25608180230000000000  31559

- - - - - REC-TYPE01 - - - - - 2 Line(s) suppressed

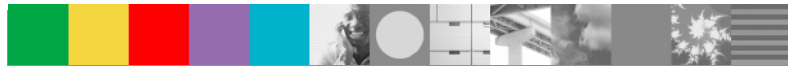
000010 02      Silvano Prez              Programmer          48  Small Lane        Mt Pl
        FF      E89A8994D98A4444444444  D9989899894444  FF44E98994D898444444  DA4D9
        02      29351560795900000000  79679144590000  48002413303155000000  43073
    
```



# Edit

Process    Options    Help

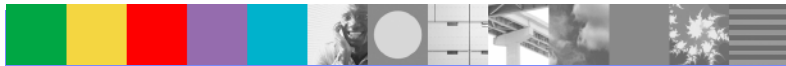
Edit		ALLANS2.FMDEMO.VSAM				Rec 6 of 78
Command ==>						Scroll PAGE
		Type ESDS    RBA 400				Format TABL
REC-TYPE	NAME	JOB-TITLE	ADDR1	ADDR2		
#2	#3	#4	#5	#6	+	
AN 1:2	AN 3:20	AN 23:14	AN 37:20	AN 57		
<>	<-----1----->	<-----1----->	<-----1----->	<-----1----->	<-----1----->	
000006	02    Grant Sutherland	Developer	22 Montrose St	Thorn		
000007	02    Graham Purdy	Developer	256 Hay St	Canni		
V - - - -	- - - - - REC-TYPE01	- - - - -	- - - - -	- - - - -	- - - - -	2 Line(s) suppressed
000010	02    Silvano Prez	Programmer	48 Small Lane	Mt Pl		
000011	02    Don Pharoah	Programmer	661 Ayton Way	Flore		
- - - - -	- - - - - REC-TYPE01	- - - - -	- - - - -	- - - - -	- - - - -	3 Line(s) suppressed
000015	02    Grant Sutherland	Developer	22 Montrose St	Thorn		
000016	02    Andrew Astle	Developer	44 Eagle Rise	River		
000017	02    Graham Purdy	Developer	256 Hay St	Canni		
000018	02    Bill Soper	Developer	84 Murchison Rd	Diane		
000019	02    Tyrone Dalais	Developer	92 Smith St	Belmo		
000020	02    Rod Turner	Manager	184 Alexander Dve	Swan		
000021	02    Clive Nealon	Manager	28 Bern Rd	Middl		
000022	02    Jim Alexander	Manager	123 Wellington St	Gilfo		
000023	02    Silvano Prez	Programmer	48 Small Lane	Mt Pl		



# Edit

Process    Options    Help

Edit		ALLANS2.FMDEMO.VSAM					Rec 7 of 78	
Command ==>		C ALL 65000 60000 #6					Scroll PAGE	
		Type ESDS	RBA 480		Format TABL			
REC-TYPE	NAME	EMPLOYEE-NO	AGE	SALARY	MONTH(1)			
#2	#3	#4	#5	#6	#7			
AN 1:2	AN 3:20	BI 23:2	BI 25:2	PD 27:4	BI 31:4			
<>	<-----1----->	<---->	<---->	<----->	<-----1>			
- - -	- - -	- - -	- - -	- - -	- 2 Line(s) suppressed			
000008	01	Silvano Prez	2161	55	69000	1		
000009	01	Liz Rushton	3349	40	65000	14		
- - -	- - -	- - -	- - -	- - -	- 2 Line(s) suppressed			
000012	01	John Nicholls	3349	40	69000	30		
000013	01	Anna Waghorn	7812	33	65000	2		
000014	01	Merrill Bani	7876	56	58000	18		
- - -	- - -	- - -	- - -	- - -	- 20 Line(s) suppressed			
- - -	- - -	- - -	- - -	- - -	- 2 Line(s) not selected			
000037	01	Graham Purdy	5512	54	68000	28		
000038	01	Al Tortorice	3101	39	65000	15		
000039	01	Will Soper	4412	40	68000	5		
000040	01	Tyrone Dalais	3312	21	66000	14		
- - -	- - -	- - -	- - -	- - -	- 2 Line(s) not selected			
- - -	- - -	- - -	- - -	- - -	- 2 Line(s) suppressed			

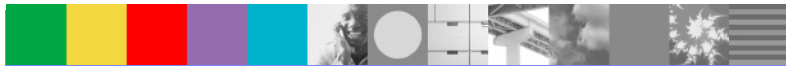


# Edit

Process    Options    Help

```

Edit                ALLANS2.FMDEMO.VSAM                4 string(s) changed
Command ==>
Type ESDS          RBA
REC-TYPE NAME      EMPLOYEE-NO      AGE      SALARY      MONTH(1)
#2      #3              #4      #5      #6      #7
AN 1:2   AN 3:20      BI 23:2 BI 25:2 PD 27:4      BI 31:4
<>      <-----1----->      <----+>  <----+>  <----+-->  <-----1>
***** **** Top of data ****
000001 01      Graham Purdy      5512      24      68000      28
000002 01      Graham Purdy      5512      24      68000      28
000003 01      Al Tortorice      3101      39      53000      15
000004 01      Will Soper        4412      28      68000      5
000005 01      Tyrone Dalais     3312      21      60000      14
- - - - - REC-TYPE02 - - - - - 2 Line(s) suppressed
000008 01      Silvano Prez      2161      55      69000      1
000009 01      Liz Rushton       3349      40      60000      14
- - - - - REC-TYPE02 - - - - - 2 Line(s) suppressed
000012 01      John Nicholls     3349      40      69000      30
000013 01      Anna Waghorn      7812      33      60000      2
000014 01      Merrill Bani      7876      56      58000      18
- - - - - REC-TYPE02 - - - - - 20 Line(s) suppressed
- - - - - - - - - - - - - - - - - - - - - 2 Line(s) not selected
    
```



## Utilities

- Copy data
  - ▶ Select records/fields using Boolean expressions
  - ▶ “Map” fields from an input file to an output file
  - ▶ Reformat and generate data while copying
  - ▶ Field values can be “scrambled” to protect sensitive data
  - ▶ Copy data into XML format
- Global Find/Change
  - ▶ Search for/change data across members in a PDS(E)
  - ▶ Perform a new search based on the results of a previous search
- Compare
  - ▶ Compare records/fields between files
  - ▶ Use field level mapping for comparison criteria
  - ▶ Special options for load module comparisons



# Utilities

Process    Options    Help

File Manager

Primary Option Menu

Command ==> 3

0	Settings	Set processing options	User ID . . : ALLANS2
1	View	View data	System ID : STLABF2
2	Edit	Edit data	Appl ID . . : ISR
3	Utilities	Perform utility functions	Version . . : 8.1.0
4	Tapes	Tape specific functions	Terminal. . : 3278A
5	Disk/VSAM	Disk track and VSAM CI functions	Screen. . . : 1
6	OAM	Work with OAM objects	Date. . . . : 2007/09/19
7	Templates	Template and copybook utilities	Time. . . . : 07:44
8	HFS	Access Hierarchical File System	
X	Exit	Terminate File Manager	



# Utilities – Compare Data

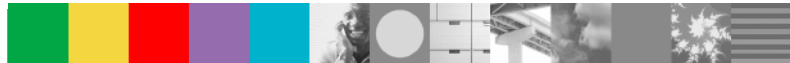
Process    Options    Help

File Manager

Utility Functions

Command ==> 11

0	DBCS	Set DBCS data format for print
1	Create	Create data
2	Print	Print data
3	Copy	Copy data
4	Dslist	Catalog services
5	VTOC	Work with VTOC
6	Find/Change	Search for and change data
7	AFP	Browse AFP data
8	Storage	Browse user storage
9	Printdsn	Browse File Manager print data set
10	Loadlib	Load module utility functions
11	Compare	Compare data
12	Audit trail	Print audit trail report
13	Copybook	View and Print



# Utilities – Compare Data

Process   Options   Help

File Manager                      Compare Utility : Old Data Set

Command ==>

More: +

"Old" Partitioned, Sequential or VSAM Data Set, or HFS file:

Data set/path name . . .	'ALLANS2.FMDEMO.VSAM'		+
Member . . . . .	_____	(Blank or pattern for member list)	
Volume serial . . . . .	_____	(If not cataloged)	
Start key . . . . .	_____	key or slot	
Skip count . . . . .	0	number of records to be skipped	
Compare count . . . . .	ALL	number of records to be compared	

"Old" Copybook or Template:

Data set name . . . . .	'ALLANS2.FMDEMO.TEMPLATE'	
Member . . . . .	DEMODATA	(Blank or pattern for member list)

Processing Options:

Copybook/template usage

- 1 1. Above
- 2. Previous
- 3. None
- 4. Create dynamic

Enter "/" to select option

- \_ Edit template \_ Type (1,2,S)
- \_ Advanced member selection
- \_ Skip member name list
- \_ Batch execution
- \_ Binary mode, reclen \_\_\_\_\_



# Utilities – Compare Data

Process    Options    Help

File Manager                      Compare Utility : New Data Set

Command ==> \_\_\_\_\_

"New" Partitioned, Sequential or VSAM Data Set, or HFS file:

```
Data set/path name . . . 'ALLANS2.FMDEMO.COMPNEW' +
Member . . . . . _____ (Blank or pattern for member list)
Volume serial . . . . . _____ (If not cataloged)
Start key . . . . . _____ key or slot
Skip count . . . . . _____ number of records to be skipped
Compare count . . . . . _____ number of records to be compared
```

"New" Copybook or Template:

```
Data set name . . . . . 'ALLANS2.FMDEMO.TEMPLATE'
Member . . . . . COMPNEW (Blank or pattern for member list)
```

Processing Options:

Copybook/template usage

- 1 1. Above
2. Previous
3. None
4. Create dynamic

Enter "/" to select option

```
_ Edit template _ Type (1,2,S)
_ Binary mode, reclen _____
```



# Utilities – Compare Data

Process    Options    Help

File Manager

Compare Utility : Options

Command ==>

More: +

## Compare Options:

### Compare type

- 2 1. Record  
2. Formatted

### Synchronization

- 1 1. One-to-one  
2. Read-ahead  
3. Keyed

### Listing type

- 2 1. Summary  
2. Delta  
3. Matching  
4. Long  
5. None

### Long Report

- Enter "/" to exclude  
\_ Inserted  
\_ Deleted  
\_ Changed  
\_ Matched

## Processing Options:

### Enter "/" to select option

- \_ Edit template mapping  
/ Clear print data set  
\_ Create result data sets

### ISPF Packing

- 1 1. Unpack if packed  
2. None  
3. Skip

## Listing Options:

### Enter "/" to select option

- / Wide listing  
\_ Show hex chars  
/ Highlight changes  
\_ Show field attributes  
\_ Show changed fields only  
\_ Always show SELECTed fields

Number of differences to report ALL

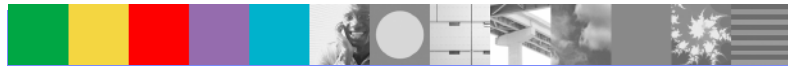


## Utilities – Compare Data - Output

```

Process  Options  Help
-----
Print Browse          ALLANS2.FMN.LIST                      Rec 18 of 122
Command ==>          _____
                                Record 18          Col 2          Scroll CSR
                                _____          _____          Format CHAR
-----1-----2-----3-----4-----5-----6-----7-----8
* * * * Formatted comparison with one-to-one synchronization
* * New data set: ALLANS2.FMDEMO.COMPNEW
* *          using template ALLANS2.FMDEMO.TEMPLATE (COMPNEW)
* * Old data set: ALLANS2.FMDEMO.VSAM
* *          using template ALLANS2.FMDEMO.TEMPLATE (DEMODATA)
New data set fields:  REC-TYPE NAME          EMPLOYEE-NO      AGE      SALAR
ID NREC-# OREC-#    <>          <----+-----1-----+---->    <----+>    <----+>    <----+---
C 000005          01          Tyrone Dalais          3312          21          6500
Old data set fields:  REC-TYPE NAME          EMPLOYEE-NO      AGE      SALAR
ID NREC-# OREC-#    <>          <----+-----1-----+---->    <----+>    <----+>    <----+---
O          000005    01          Tyrone Dalais          3312          21          6000
                                     ||| |||
C 000009          01          Liz Rushton          3349          40          6500
O          000009    01          Liz Rushton          3349          40          6000
                                     ||| |||
C 000013          01          Anna Waghorn          7812          33          6500
O          000013    01          Anna Waghorn          7812          33          6000
                                     ||| |||

```



## Utilities – Compare Data - Output

```

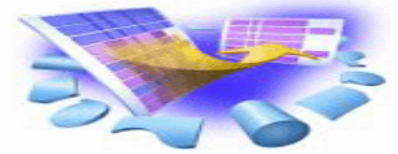
Process   Options   Help
-----
Print Browse          ALLANS2.FMN.LIST          Rec 37 of 122
Command ==>          _____          Scroll CSR
                               Record 37          Col 2          Format CHAR
-----1-----2-----3-----4-----5-----6-----7-----8
IBM File Manager for z/OS
Comparison summary:

Old data set records processed:          62
New data set records processed:          62
    Matching records found:              59
        Changed records:                  3
    Old records not selected:             16
    New records not selected:             16
    Old records not compared:             0
    New records not compared:             0
Old data set records deleted:             0
New data set records inserted:            0
    Synchronization: One-to-one
    Comparison type: Formatted
    Listing type: Delta
    Listing options: Wide listing
                          Highlight changes

```



# File Manager CICS Features



- ISPF-like panels
- Full function edit and view
  - ▶ Table
  - ▶ Single
- Flexible selection criteria
  - ▶ Work with copybooks or templates
- CICS Resource
  - ▶ File
  - ▶ Temporary Storage
  - ▶ Transient Data
- Print data
- List Resources
- Support for extended addressability ESDSs
- Interface to File Manager z/OS
- Interface to File Manager IMS
- Modes Of Operation
  - ▶ Interactive
- Interfaces
  - ▶ CICS
- Support for IBM Software
  - ▶ CICS TS V3.2



# Starting File Manager for CICS

FM

# FM / CICS Primary Option Menu

Process Options Help

FM/CICS

Primary Option Menu

0	Settings	Set processing options	User ID . : ALLANSC
1	View	View data	CICS User : ALLANSC
2	Edit	Edit data	CICS Appl : CICSC31F
3	Utilities	Perform utility functions	Date. . . : 2007/09/27
4	Templates	Template and copybook utilities	Time. . . : 06:26
FM	FM	File Manager z/OS	
FI	FM/IMS	File Manager for IMS z/OS	
X	Exit	Terminate FM/CICS	

Processing Options:

CICS Resource

- 1 1. File
2. Temporary Storage
3. Transient Data

Command ==> 2

F1=Help F3=Exit F4=CRetriev F7=Backward F8=Forward F10=Actions  
F12=Cancel



DEMAND BUSINESS™

November, 2007

# Edit - CICS File

Process Options Help

FM/CICS

Edit CICS File Entry Panel

Input CICS VSAM File:

File name . . . . . FMCUST  
 Sysid . . . . . \_\_\_\_\_  
 Start position . . \_\_\_\_\_ +  
 Record limit . . . . \_\_\_\_\_ Record sampling \_  
 Inplace edit . . . . \_ Prevent inserts and deletes  
 Lock resource . . . . \_ Name \_\_\_\_\_

Copybook or Template:

Data set name . . . . 'ALLANSC.ADDEMO.FMCICS.COPYBOOK'  
 Member . . . . . CUSTFILE (Blank or pattern for member list)

Processing Options:

Copybook/template	Start position type	Enter "/" to select option
<u>1</u> 1. Above	_ 1. Key	_ Edit template _ Type (1,2,S)
2. Previous	2. RBA	_ Include only selected records
3. None	3. Record number	_ Create audit trail
4. Create dynamic		

Command ==> \_\_\_\_\_

F1=Help F3=Exit F4=Expand F7=Backward F8=Forward F10=Left  
 F11=Right F12=Cancel





# Edit - CICS File

Process Options Help

```

Edit          FI:FMCUST DS:ALLANSC.ADDEMO.CU  +          At top
Key _____ + Type KSDS          Format TABL
Customer Name NO-SHARES BUY-FROM-NO BUY-TO
#2             #6 #8             #9
AN 1:81        ZD 82:4 AN 94:4    AN 98:8
<---+---1---+--->    <---> <-->    <---+--->
***** **** Top of data ****
000001 helena_smith          1200 0500          00080.00
000002 helena_smith          300
000003 helena_smith          420 0200          00215.00
000004 justine_grose        5200 1000          00026.00
000005 justine_grose          500
000006 justine_grose          800
000007 justine_grose          400          00200.00
- - - - - 1 Line(s) not selected
000009 keiron_casey          480
000010 peter_niblett        5000          00012.00
000011 peter_niblett        600 0200          00120.00
- - - - - 5 Line(s) not selected
Command ==> X ALL          Scroll PAGE
F1=Help    F2=Zoom    F3=Exit    F4=Expand    F5=RFind    F7=Up
F8=Down    F10=Left   F11=Right  F12=Cancel
    
```

# Application Performance Analyzer



# Application Performance Analyzer Features



- Application Performance Analyzer for z/OS collects samples from a monitored address space and analyzes the system or resource application in the following categories:
- Total address space utilization of all modules in the address space
- 
- CSECT utilization within each load module
- 
- Instruction or statement utilization within each CSECT
- 
- Assembler, COBOL and PL/I statements utilization within each module
- 
- MQSeries® queue information
- 
- DASD statistics, including VSAM information
- 
- CPU usage



# Application Performance Analyzer for z/OS (APA)

## ■ Key features

- ▶ Measure and report resource use in virtually any IBM z/OS® address space
- ▶ Isolate application performance problems
- ▶ Pinpoint performance bottlenecks
- ▶ Identify constraints
- ▶ Non-intrusive
- ▶ Helps with design, development and maintenance
- ▶ Shares side files with Fault Analyzer and Debug Tool

## ■ IBM Product Support

- ▶ Supports C/C++, Assembler, COBOL, PL/I, Java and CICS, DB2, IMS, WebSphere MQ and WebSphere Application Server
- ▶ CICS TS V1 to V3, IMS V7 to V10, DB2 V7 to V9

## New in APA V8.1

- **Java Enhancements**
- **Unix System Services support**
- **Report Enhancements**
- **Usability Enhancements**



# Application Performance Analyzer Features



- Summary/Profile reports with drill down into detailed levels via an ISPF interface or PDF hardcopy
- CPU, Load Module, and CSECT analysis of all modules in the address space
- Source statement (COBOL or PL1) or instruction utilization in each CSECT
- Supports Fault Analyzer / Debug Tool Sidefiles
- Wait time analysis by category, task/module, or attribution
- DASD I/O analysis by device, DDNAME, dataset and dataset attributes, EXCP's, VSAM with buffer pool, I/O wait, over time
- SYSPLEX coupling facility reports
- CICS session statistics, transaction analysis by CPU usage, mean and total service time, and waits by transaction



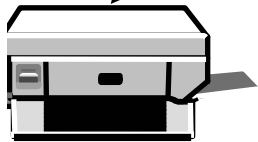
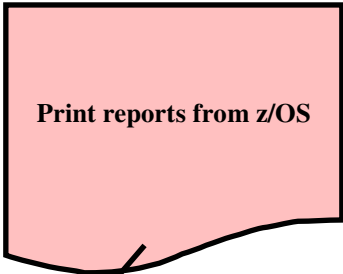
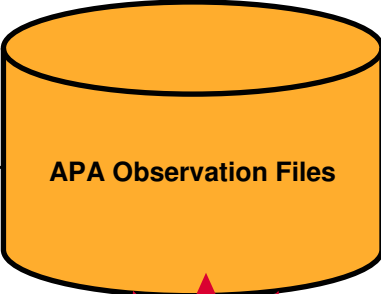
# Application Performance Analyzer Features



- Types of Observation Sessions
  - ▶ Real-Time
  - ▶ Scheduled
  - ▶ Via batch submission
- Non-intrusive performance analyzer for applications and systems programmers to
  - ▶ Improve response time in online applications
  - ▶ Improve batch turn around time
  - ▶ Identify excessive I/O activity
  - ▶ Identify excessive CPU usage
  - ▶ Test the effects of increasing workload
  - ▶ Isolate performance problems in new and existing applications
- Support for IBM Software
  - ▶ CICS TS V3.2
  - ▶ DB2 V9
  - ▶ IMS V10



# Application Performance Analyzer - Provides rapid pinpointing of enterprise application bottlenecks



View reports online with ISPF



View reports in PDF format on PC



# Application Performance Analyzer Report Summary

## **CICS**

Session Statistics  
 CPU Usage by Txn  
 Mean Service Time by Txn  
 Total Service Time by Txn  
 Service Time by Task Id  
 Wait Time by Txn

## **Storage & Statistics**

Measurement Profile  
 Load Module Attributes  
 Load Module Summary  
 TCB Summary  
 Memory Usage Timeline  
 Data Space Usage Timeline  
 TCB Execution Summary  
 Processor Utilization Summary

## **DB2**

Measurement Profile  
 SQL Wait Time by Statement  
 SQL Activity Timeline  
 SQL Wait Time by Plan  
 SQL Activity by DBRM  
 SQL CPU/Svc Time by DBRM  
 SQL Activity by Statement  
 SQL CPU/Svc Time by Stmt  
 SQL Activity by Plan  
 SQL CPU/Svc Time by Plan  
 SQL Statement Attributes  
 SQL Threads Analysis  
 SQL Wait Time by DBRM  
 CPU by Plan/Stored Proc

## **Wait**

Time by Task/Category  
 Time by Task/Module  
 Time Referred Attribution

## **CPU**

Usage by Category  
 Usage by Procedure  
 Usage by Module  
 Referred Attribution  
 Usage by Code Slice  
 Usage Timeline  
 Usage Task/Category  
 Usage Task/Module

## **IMS**

Measurement Profile  
 DL/I Call Timeline  
 DL/I Transaction Timeline  
 Transaction Activity Timeline  
 Usage by PSB  
 Usage by Transaction  
 Usage by DL/I Call  
 Transaction Service Times  
 Transaction DL/I Counts

## **MQSeries**

Activity Summary  
 Serv Time by Txn  
 CPU Usage by Queue  
 Wait Time by Queue  
 CPU Usage by Request  
 Wait Time by Reque  
 CPU Usage by Txn  
 Wait Time by Txn  
 Serv Time by Queue  
 Serv Time by Request

## **DASD**

Usage by Device  
 Activity Timeline  
 Usage by DDNAME  
 I/O Wait Time  
 Usage by Dataset  
 VSAM Buffer Pool Usage  
 Dataset Attributes  
 Summary  
 DASD VSAM Statistics

## **Coupling Facility**

Summary  
 Mean Times  
 Facility Total Times



# Schedule Options

```

File  View  Navigate  Help
-----
R03: Schedule New Measurement                               Row 00001 of 00008
Command ==> _____ Scroll ==> CSR

● 1. Job Information      3. Multi Steps      5. CICS Txns      ● 7. Schedule
  2. Options              4. Active Jobs      6. Sysplex        8. Sched Options

Panel 8. Schedule Options

Specify if the job is active and is to be measured immediately (Y) or if
AP-Analyzer is to wait for the job to be submitted (N):

Measure active job (Y/N) . . . . N

Times to repeat measurement . ___ Repeat the measurement if the job
Within interval (minutes) . . ___ runs more than once within the
                                   specified interval.

Mâ a                                                                    14/036
    
```

## S01: Measurement Profile - Suggested Start for Navigation

File View Navigate Help

R01: IBM APA for z/OS Performance Reports (0018) Row 00001 of 00007  
 Command ==> Scroll ==> CSR

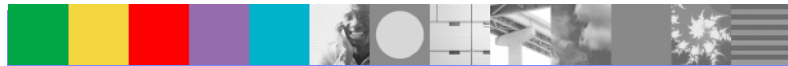
Select a category from the list to the right to view the available reports in the selection list below.

_ A Admin/Miscellaneous	_ I IMS Measurement
_ S <b>Statistics/Storage</b>	_ E CICS Measurement
_ C CPU Usage Analysis	_ F DB2 Measurement
_ D DASD I/O Analysis	_ Q MQ Measurement
_ W CPU WAIT Analysis	_ G Coupling Facility

Enter S to make a selection or enter the report code on the command line

S S01 Measurement Profile	_ S07 TCB Execution Summary
<b>S</b> S02 Load Module Attributes	_ S08 Processor Utilization Summary
_ S03 Load Module Summary	
_ S04 TCB Summary	
_ S05 Memory Usage Timeline	
_ S06 Data Space Usage Timeline	

Mâ b



# S01: Measurement Profile - Summary

```
File View Navigate Help

S01: Measurement Profile (0018) Row 00001 of 00078
Command ==> Scroll ==> CSR

Overall CPU Activity
Samples      2,889    100.0%  ' ' ' ' ' ' ' ' ' ' ' ' ' ' '
CPU Active   2,865    99.1%   ██████████
WAIT         1         0.0%   ■
Queued       23         0.7%   ■

Reports:
C01 C02 C03 C05
C01 W01 W02

CPU Usage Distribution
CPU Active   2,865    100.0%  ' ' ' ' ' ' ' ' ' ' ' ' ' ' '
Application   256     8.9%   █
System       2,609    91.0%   ██████████
DB2 SQL      0         0.0%
Data Mgmt    0         0.0%
Unresolved   0         0.0%

Reports:
C01 C05 W01

CPU Modes
Active CPU   2,865    100.0%  ' ' ' ' ' ' ' ' ' ' ' ' ' ' '
Supv Mode    1         0.0%   ■

Reports:
S08
```

MA a A

Enter

Navigate to more detailed information by selecting the desired report with the cursor

# C01: CPU Usage by Category

File View Navigate Help			
C01: CPU Usage by Category (0018)			Row 00001 of 00002
Command ==>			Scroll ==> CSR
Name	Description	Percent of CPU Time * 10.00%	±1.8%
		*.....1.....2.....3.....4.....5.....6.....7.....8	
<u>SYSTEM</u>	System/OS Services	91.06	
<u>APPLCN</u>	Application Code	8.93	

MA a A 09/002

# Shortcut - Expand 3 levels

File View Navigate Help			
C01: CPU Usage by Category (0018)			Row 00001 of 00002
Command ==>			Scroll ==> CSR
Name	Description	Percent of CPU Time * 10.00%	±1.8%
SYSTEM	System/OS Services	91.06	*.....1.....2.....3.....4.....5.....6.....7.....8
+3 LCN	Application Code	8.93	██████████

MA a

A

Enter







# P01 Source Program Attribution

```

File View Navigate Help
P01: Source Program Attribution (0018) Row 00001 of 00047
Command ==> █ Scroll ==> CSR

LineNo Offset Count Source Statement

000033
000034 PROCEDURE DIVISION.
000035 MAIN-PARA.
000036 000536 DISPLAY 'START PARA'.
000037 000544 PERFORM START-PARA.
000038 00055C 17 █ PERFORM CAL-PARA UNTIL TIME-INTERVAL > TIME-DURA
000039 000596 PERFORM OPEN-PARA.
000040 0005AE INITIALIZE TIME-START , TIME-STOP , TIME-INTERVA
000041 0005C0 PERFORM START-PARA.
000042 0005DC 20 █ PERFORM CAL-PARA UNTIL TIME-INTERVAL > TIME-DURA
000043 000616 DISPLAY 'WRITE PARA'.
000044 000624 PERFORM INITIALIZE-PARA.
000045 00063C PERFORM WRITE-PARA VARYING I FROM 1 BY 1 UNTIL I
000046 000690 INITIALIZE TIME-START , TIME-STOP , TIME-INTERVA
000047 0006A2 PERFORM CLOSE-PARA.
000048 0006BA PERFORM START-PARA.
000049 0006D6 17 █ PERFORM CAL-PARA UNTIL TIME-INTERVAL > TIME-DURA

```

MA █ a A


 PF8



# P01: Source Program Attribution

```

File View Navigate Help
P01: Source Program Attribution (0018) Row 00018 of 00047
Command ==> Scroll ==> CSR

LineNo Offset Count Source Statement
000049 0006D6 17 PERFORM CAL-PARA UNTIL TIME-INTERVAL > TIME-DURA
000050 000710 STOP RUN.
000051
000052 CAL-PARA.
000053 000730 21 PERFORM STOP-PARA.
000054
000055 START-PARA.
000056 00074E ACCEPT TIME-START FROM TIME.
000057
000058 STOP-PARA.
000059 00078E 47 ACCEPT TIME-STOP FROM TIME.
2546 <- CPU time attributed to above statement
000060 0007C8 129 COMPUTE TIME-INTERVAL = TIME-START - TIME-STOP.
000061
000062 INITIALIZE-PARA.
000063
000064 TO TABLE-VALUES(1).
000065 TO TABLE-VALUES(2).
    
```

The Pink highlighted line indicates a System Module and is termed as **Referred Attribution**



# C05: CPU Usage by Task/Category - Expanded

```

File View Navigate Help
C05: CPU Usage by Task/Category (0018) Row 00001 of 00018
Command ==> Scroll ==> CSR

```

Name	Description	Percent of CPU Time * 10.00%	±1.8%
		*.....1.....2.....3.....4.....5.....6.....7.....8.	
<u>VSAMWRTE-001</u>	TCB=008CAD90	100.00	
→ <u>SYSTEM</u>	System/OS	91.06	
	Services		
→ <u>APPLCN</u>	Application Code	8.93	
→ <u>VSAMWRTE</u>	Application	8.93	
	Program		
→ <u>VSAMWRTE</u>	CSECT in	8.76	
	VSAMWRTE		
→ <u>CEELOCT</u>	LE Runtime	0.17	
	Module		
→ <u>DATAMG</u>	Data Mgmt	0.00	
	Processing		
→ <u>DB2SQL</u>	SQL Processing	0.00	
<u>IEAVAR00-002</u>	TCB=008FE0A8	0.00	
<u>IEAVTSDT-003</u>	TCB=008FFE88	0.00	
<u>IEESB605-004</u>	TCB=008FFBF8	0.00	

MA a A

The CSECTS VSAMWRTE and CEELOCT in the VSAMWRTE Load Module make up The 8.93% of CPU used by the APPLCN Modules.

# C07 CPU Usage by Procedure

```

File View Navigate Help
C07: CPU Usage by Procedure (0018) Row 00001 of 00005
Command ==> Scroll ==> CSR

```

Program	Procedure Name	Percent of CPU Time * 10.00%	±1.8%
<u>VSAMWRTE</u>	STOP-PARA	6.14	
<u>VSAMWRTE</u>	MAIN-PARA	1.88	
<u>VSAMWRTE</u>	CAL-PARA	0.73	
<u>SYSTEM</u>	System/OS Services	91.06	
<u>APPLCN</u>	No Procedure Mapped	0.17	

Report can be easily sorted to display the Top 'N' Highly Used Procedures

# Enter P to View the Source Listing

```

File View Navigate Help
C07: CPU Usage by Procedure (0018) Row 00001 of 00006
Command ==> Scroll ==> CSR

```

Program	Procedure Name	Percent of CPU Time * 10.00%	±1.8%
<u>P</u> SAMWRTE	STOP-PARA	6.14	
<u>V</u> SAMWRTE	MAIN-PARA	1.88	
<u>V</u> SAMWRTE	CAL-PARA	0.73	
<u>S</u> YSTEM	System/OS Services	91.06	
<u>A</u> PPLCN	No Procedure Mapped	0.17	

MA a

A



# P01: Source Program Attribution

```

File View Navigate Help
P01: Source Program Attribution (0018) Row 00021 of 00047
Command ==> Scroll ==> CSR

LineNo Offset Count Source Statement
000052 CAL-PARA.
000053 000730 21 PERFORM STOP-PARA.
000054
000055 START-PARA.
000056 00074E ACCEPT TIME-START FROM TIME.
000057
000058 STOP-PARA.
000059 00078E 47 ACCEPT TIME-STOP FROM TIME.
2546 <- CPU time attributed to above statement
000060 0007C8 129 COMPUTE TIME-INTERVAL = TIME-START - TIME-STOP.
000061
000062 INITIALIZE-PARA.
000063
000064 0007F2 MOVE 'SIRISHA' TO TABLE-VALUES(1).
000065 0007F8 MOVE 'SUSARLA' TO TABLE-VALUES(2).
000082 00085E MOVE 'VEENA' TO TABLE-VALUES(19).
000083 000864 MOVE 'SONALI' TO TABLE-VALUES(20).
000084
MA a A 08/041

```



# W01: WAIT Time by Task/Category - Expanded

```

File View Navigate Help
W01: WAIT Time by Task/Category (0018) Row 00001 of 00013
Command ==> Scroll ==> CSR
Name Description Percent of Time in WAIT * 10.00% ±1.8%
*.....1.....2.....3.....4.....5.....6.....7.....8.
VSAMWRTE-001 TCB=008CAD90 0.03
→ SYSTEM System/OS 0.03
    SVC SVC Routines 0.03
    → SVC018 BLDL/FIND 0.03
→ APPLCN Application Code 0.00
→ DATAMG Data Mgmt 0.00
    Processing
IEAVAR00-002 TCB=008FE0A8 0.00
IEAVTSDT-003 TCB=008FFE88 0.00
IEESB605-004 TCB=008FFBF8 0.00
IEFIIC-005 TCB=008E98B0 0.00
    
```

VSAMWRTE experienced a delay when the SYSTEM issued a SVC 18

# W02: WAIT Time by Task/Module - Expanded

```

File View Navigate Help
-----
W02: WAIT Time by Task/Module (0018)                               Row 00001 of 00009
Command ==> _____ Scroll ==> CSR_

Name      Description      Percent of Time in WAIT * 10.00%  ±1.8%
*.....1.....2.....3.....4.....5.....6.....7.....8.
SAMWRTE-001 TCB=008CAD90      0.03
+ IGC018      Supervisor        0.03
  SVC018      BLDL/FIND         0.03

IEAVAR00-002 TCB=008FE0A8      0.00
IEAVTSDT-003 TCB=008FFE88      0.00
IEESB605-004 TCB=008FFBF8      0.00
IEFIIC-005   TCB=008E98B0      0.00
    
```

The SVC 18 was issued by Module IGC018

# DASD I/O Analysis “D” Reports

File View Navigate Help

R01: IBM APA for z/OS Performance Reports (0089)

Row 00001 of 00007

Command ==> █

Scroll ==> CSR

Select a category from the list to the right to view the available reports in the selection list below.

_ A Admin/Miscellaneous	_ I IMS Measurement
_ S Statistics/Storage	_ E CICS Measurement
_ C CPU Usage Analysis	_ F DB2 Measurement
_ D <b>DASD I/O Analysis</b>	_ Q MQ Measurement
_ W CPU WAIT Analysis	_ G Coupling Facility

Enter S to make a selection or enter the report code on the command line

_ D01 DASD Usage by Device	_ D07 DASD Activity Timeline
_ D02 DASD Usage by DDNAME	_ D08 DASD I/O Wait Time
_ D03 DASD Usage by Dataset	_ D09 VSAM Buffer Pool Usage
_ D04 Dataset Attributes	
_ D05 DASD EXCP Summary	
_ D06 DASD VSAM Statistics	



# D03: DASD Usage Time By Dataset - Expanded

D03: DASD Usage Time by Dataset (0145) Row 00001 of 00005  
 Command ==> \_\_\_\_\_ Scroll ==> CSR

Dataset_Name>DDName	Percent of Time * 10.00% ±1.0%
	* . . . . 1 . . . . 2 . . . . 3 . . . . 4 . . . . 5 . . . . 6 . . . . 7 .
<u>MACHIND.TEST.ESDS10M.JAN05</u>	1.05 ■
<u>MACHIND.FMN@\$\$.TEMP@\$@1</u>	0.91
<u>MACHIND.TEST.ESDS10M.MSTAPR03</u>	0.56
<u>ISP.SISPLOAD</u>	0.01
→ <u>STEPLIB</u> <u>IPL14D</u>	0.01



D04: Dataset Attributes (7773)

Row 00001 of 00105

Command ==> █

Scroll ==> PAGE

Sort by: DDName enter SF, by Dataset Name enter SD.

Dataset information reported for 4 files.

VSAM file FILE1 OPENed at 16:41:36.67 Tuesday Oct 23 2007

DDNAME	FILE1					
Open Intent	KEY, SEQ, IN					
Dataset Name	ADTOOLS.APA.VSAM.DAT					
Storage Class	MEDIUM					
Device Type	3390					
% Free Bytes in CI	10%		<u>Initial</u>	<u>Last</u>		
Volume Serial	SMS004	CI Splits	1	1		
CI Size	8,192	CA Splits	0	0		
Record Size (LRECL)	14	Logical Records	2,102	2,102		
Number of Extents	1	Deleted Records	182	182		
SHAREOPTIONS	(1 3)	Insrted Records	2	2		
Organization	KSDS	Retrvd Records	12,009,149	12,009,271		
F1=Help	F2=Split	F3=End	F4=Jump	F5=Rfind	F7=Up	F8=Down
F9=Swap	F10=Left	F11=Right	F12=Cancel			

# D05: EXCP Summary – Expanded Detail

File View Navigate Help

More: +

The following report line was selected

<u>SYS00038-1</u>	<b>VSAM-DATA</b>	11	220	209
-------------------	------------------	----	-----	-----

VSAM file SYS00038(1) OPENed at 6:49:55.48 Tuesday May 10 2005

DDNAME	SYS00038		
Open Intent	KEY,DIR,SEQ,OUT		
Dataset Name	MACHIND.FMN@\$\$.TEMP@\$@1.DATA		
Storage Class	MEDIUM		
Device Type	3390		
% Free Bytes in CI	0%		
Volume Serial	STF630	CI Splits	0
CI Size	18,432	CA Splits	0
Record Size (LRECL)	84	Logical Records	55,080
Number of Extents	1	Deleted Records	0
SHAREOPTIONS	(2 3)	Insrted Records	0

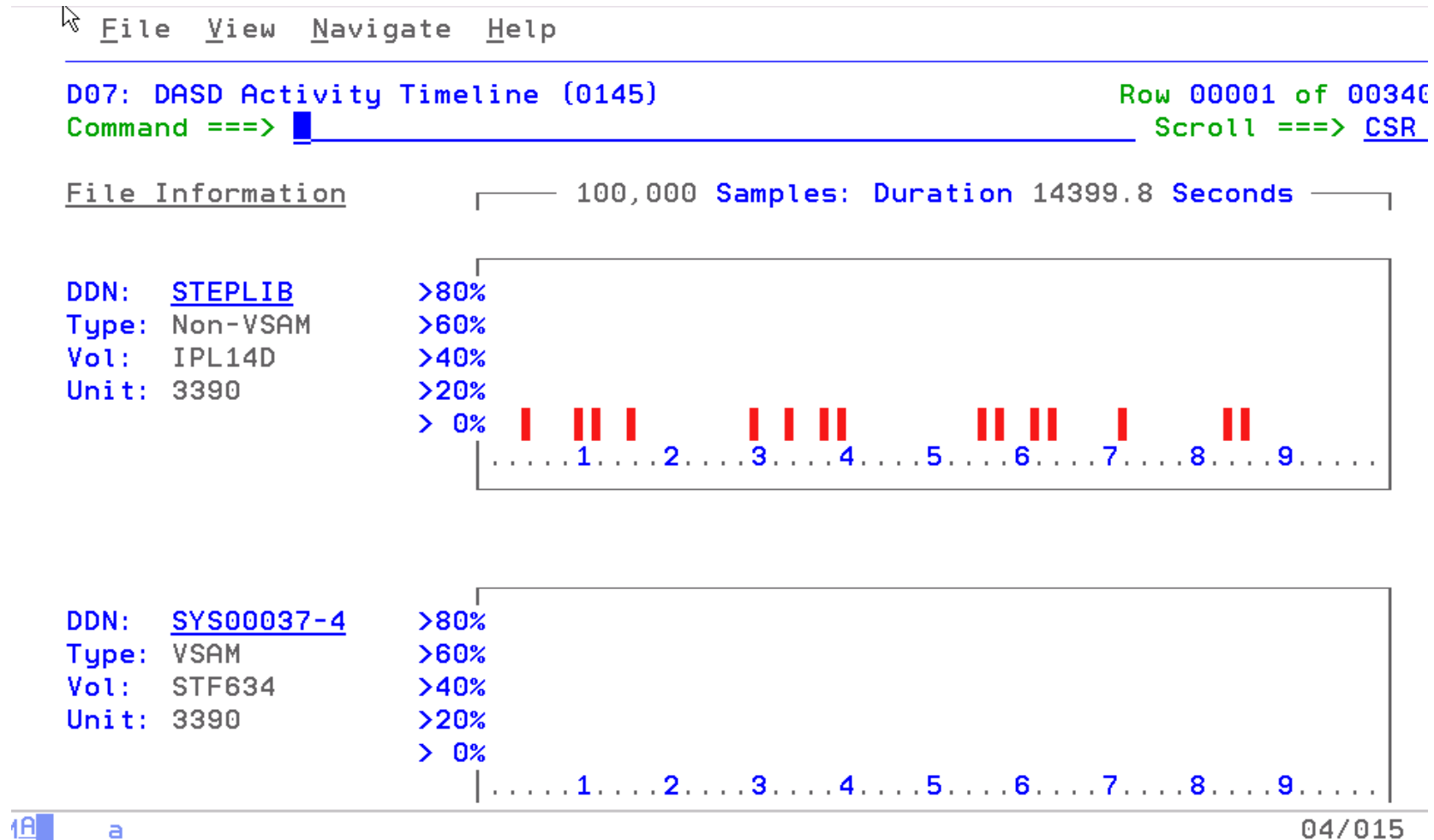
  

			<u>Initial</u>	<u>Last</u>
STEPLIB	Non-VSAM	+3	28	250
STEPLIB	Non-VSAM	+4	28	250
SYS00038-3	VSAM-DATA		2777	2888

1A a

03/004

# D07: DASD Activity Timeline



# Viewing the PDF Report

Date: Wednesday May 11 2005 9:33:39  
Section: Table of Contents

IBM A.P.A. Performance Analysis Report Page 1

Section	Page
S01: Measurement Profile (0018)	2
S02: Load Module Attributes (0018)	4
S03: Load Module Summary (0018)	6
S04: TCB Summary (0018)	7
S05: Memory Usage Timeline (0018)	8
S06: Data Space Usage Timeline (0018)	9
S07: TCB Execution Summary (0018)	10
S08: Processor Utilization Summary (0018)	11
C01: CPU Usage by Category (0018)	12
C02: CPU Usage by Module (0018)	13
C03: CPU Usage by Code Slice (0018)	14
C04: CPU Usage Timeline (0018)	27
C05: CPU Usage by Task/Category (0018)	28
C06: CPU Usage by Task/Module (0018)	30
C07: CPU Usage by Procedure (0018)	31
C08: CPU Usage Referred Attribution (0018)	32
D04: Dataset Attributes (0018)	33
D05: DASD EXCP Summary (0018)	35
D06: DASD VSAM Statistics (0018)	36
D07: DASD Activity Timeline (0018)	37
W01: WAIT Time by Task/Category (0018)	38

PDF Report is automatically generated with a Table of Contents and Bookmarks to use as quick links to the individual reports

# Advantages

- z/OS Problem Determination and Deployment Tools that:
  - ▶ Exploits IBM's latest software and processor technology
  - ▶ Offer wide array of key features and functions
  - ▶ Can enhance the Application Development Lifecycle
  - ▶ Provide opportunity for increased user productivity
  - ▶ Are affordably priced
  - ▶ Have flexible terms and conditions
  - ▶ Have no license keys



## For More Information

- **z/OS Problem Determination and Deployment Tools**

- ▶ [www.ibm.com/software/awdtools/deployment](http://www.ibm.com/software/awdtools/deployment)
- ▶ [www.ibm.com/software/awdtools/faultanalyzer](http://www.ibm.com/software/awdtools/faultanalyzer)
- ▶ [www.ibm.com/software/awdtools/filemanager](http://www.ibm.com/software/awdtools/filemanager)
- ▶ [www.ibm.com/software/awdtools/debugtool](http://www.ibm.com/software/awdtools/debugtool)
- ▶ [www.ibm.com/software/awdtools/apa](http://www.ibm.com/software/awdtools/apa)
- ▶ [www.ibm.com/software/awdtools/apaaa](http://www.ibm.com/software/awdtools/apaaa)
- ▶ [www.ibm.com/software/awdtools/workloadsimulator](http://www.ibm.com/software/awdtools/workloadsimulator)
- ▶ [www.ibm.com/software/awdtools/tester/functional](http://www.ibm.com/software/awdtools/tester/functional)
- ▶ [www.ibm.com/software/awdtools/tester/performance/zos](http://www.ibm.com/software/awdtools/tester/performance/zos)
- ▶ [www.ibm.com/software/awdtools/migration](http://www.ibm.com/software/awdtools/migration)
- ▶ [www.ibm.com/software/awdtools/tictoc/](http://www.ibm.com/software/awdtools/tictoc/)
- ▶ [www.ibm.com/software/awdtools/ispfproductivitytool](http://www.ibm.com/software/awdtools/ispfproductivitytool)
- ▶ [www.ibm.com/software/awdtools/fileexport](http://www.ibm.com/software/awdtools/fileexport)



## For more information

- **Help Center**

- <http://publib.boulder.ibm.com/infocenter/pdthelp/v1r1/index.jsp>

- **Redbooks**

- [www.redbooks.ibm.com/abstracts/sg247372.html](http://www.redbooks.ibm.com/abstracts/sg247372.html)





## For More Information

- **Training**

- ▶ Services

- Mentor Workshops

- ▶ Free Web-based

- **Application Performance Analyzer**

- <http://publib.boulder.ibm.com/infocenter/ieduasst/stgv1r0/index.jsp>

- **Debug Tools Utilities and Advanced Functions**

- <http://publib.boulder.ibm.com/infocenter/ieduasst/stgv1r0/index.jsp>

- **Fault Analyzer**

- <http://publib.boulder.ibm.com/infocenter/ieduasst/stgv1r0/index.jsp>

- **File Manager**

- <http://publib.boulder.ibm.com/infocenter/ieduasst/stgv1r0/index.jsp>

- **Workload Simulator**

- <http://www-128.ibm.com/developerworks/websphere/education/enablement/wbt/sw747.html>

- **z/OS Problem Determination and Deployment Tools Can Be Ordered From Your IBM z/Series Sales Representative**



## IBM PD Tools Product Identification

- Fault Analyzer for z/OS (5655-S15)
- File Manager for z/OS (5655-S14)
- Debug Tool Utilities and Advanced Functions for z/OS (5655-S16)
- Application Performance Analyzer for z/OS (5697-N63)
- Application Performance Analyzer Automation Assistant for z/OS (5799-HGC)
- Workload Simulator for z/OS & OS/390 (5655-I39)
- Rational Functional Tester (5726-J07)
- Rational Performance Tester for z/OS (5724-J96)
- Migration Utility (5697-N44)
- Application Time Facility (5697-N42)
- ISPF Productivity Tool (5698-A81)
- File Export Utility (5697-I12)
- Rational Developer for System z



IBM PD Tools  
win top spot  
in Software  
Strategies  
analyst  
report



IBM Software Group



## ***CICS VSAM Recovery***

***Risk Management for Your Mission Critical VSAM Data***

***George Lees***



**ON DEMAND BUSINESS™**

© 2007 IBM Corporation

November 2007

# CICS VSAM Recovery

## ■ What does it do?

- ▶ Recovers lost or damaged VSAM data
- ▶ Recovers updates made to data by CICS and/or batch applications
- ▶ Provides assistance and processes for VSAM Disaster Recovery
- ▶ Automates VSAM backup and restore processes
- ▶ Provides intelligent decision automation for certain VSAM error conditions
- ▶ Fully supports log records written by Transactional VSAM (DFSMSStvs)

## Benefits

- ▶ Automates recovery for physically or logically damaged or lost VSAM files
- ▶ Quickens recovery from batch window errors
- ▶ Reduces overall VSAM recovery time
- ▶ Provides database type recovery for your VSAM files



# CICS VSAM Recovery for z/OS (CICS VR)

## ■ Key features

- ▶ Automated recovery
- ▶ Extensive functionality and authorization management the from ISPF panel interface
- ▶ Provide test-only forward recovery and backout
- ▶ Disaster recovery report
- ▶ Export and Import commands
- ▶ Change accumulation
- ▶ Batch support including logging
- ▶ NOTIFY support for IBM and non-IBM backups

## ■ CICS Support

- ▶ CICS Transaction Server for z/OS, V2 and V3
- ▶ CICS Transaction Server for OS/390 V1.3

## New in CICS VR V4.2

### • CICS TS V3.2 support

- Extended addressability Entry Sequenced Data Sets (ESDSs)
- Backout failure detection operates in a thread-safe mode

### • Integration with external backup products, including IBM ABARS

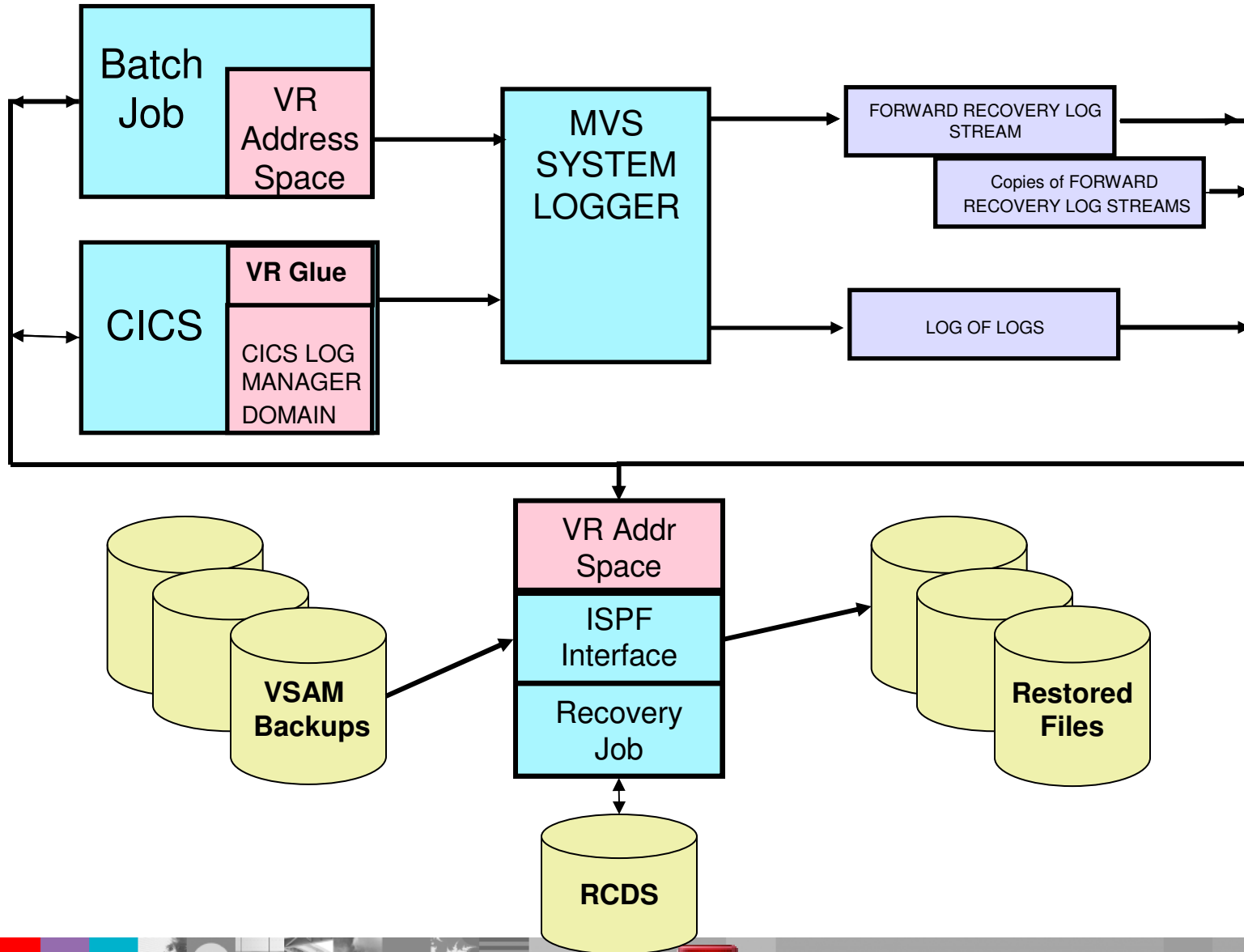
### • Enhanced logging support

## Coming Soon

- *Additional functionality for the ISPF dialog*
- *Automation enhancements*
- *Extend support for non IBM backups*



# Architecture



## CICS VR – Business Value

- Insurance protection for your mission critical VSAM files
- Use familiar database recovery techniques reducing the learning curve for implementation
- Provide consistency for all VSAM processing types
- Reduce cost of operator intervention and on call support with automation of VSAM file error detection
  - ▶ Detect VSAM errors and take corrective action
- Potential savings in the batch cycle by reducing number of backups
- Assistance at Disaster Recovery with exported RCDS and quicker automated recovery
- Reduce human errors with automated recovery processes



# CICSVR and Disaster recovery

## ■ CICSVR disaster recovery utilities

- ▶ *Log stream copy*
  - Create sequential data set copy of a forward recovery log stream
- ▶ *RCDS import/export*
  - Create sequential data set that contains essential recovery information
    - Includes information related to logstreams, backups and change accumulation data sets
- ▶ *Remote site change accumulation*
  - Create change accumulation data sets for use at a remote recovery site
  - Will accumulate latest unread portion of forward recovery log stream
- ▶ *Shadow recovery*
  - Maintain updated copies of VSAM spheres at a remote recovery site





## CICSVR Summary

- CICS VR is your insurance policy for your Corporate VSAM data
  - ▶ Data can be lost through operational error, hardware or software failure or total disaster
- Helps automate recovery in the following scenarios
  - ▶ Recover physically damaged or lost VSAM files at the primary site
  - ▶ Recover VSAM files in a disaster recovery scenario (at a remote site)
  - ▶ “Logically” recover VSAM files from particular updates
  - ▶ Remove updates made by failed batch jobs steps
- Helps quicken recovery from batch window errors
- Reduces recovery time
- Recovers from updates made by CICS, batch, or both
- Supports CICS TS, Version 3, Version 2, and 1.3



IBM PD Tools  
win top spot  
in Software  
Strategies  
analyst  
report



IBM Software Group



## ***CICS VSAM Transparency***

***Exploit the Value of Your Business Data that Resides on  
VSAM***



**ON DEMAND BUSINESS™**

© 2007 IBM Corporation

November 2007

# CICS VSAM Transparency

- **What does it do?**

- ▶ Move your data from VSAM to DB2 without application program changes
- ▶ Clean data via utilities to eliminate bad data “surprises”
- ▶ Re-engineer data to increase corporate value

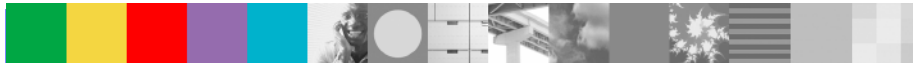
- **Benefits**

- ▶ Low Risk migration strategy
- ▶ Modify application programs at a controlled pace
- ▶ Can help lower the total cost of ownership of your zSeries platform



# CICS VSAM Transparency

- Tool to migrate VSAM files to DB2 without changing applications programs
  - ▶ *Single Instance of the data is maintained!!*
- Both CICS and Batch programs can access data in DB2 under the control of CICS VT
- Migrated data can be accessed via SQL by *new* programs
- Low risk migration strategy
  - ▶ *Fast path to move VSAM data to DB2*
  - ▶ *Not all VSAM files need to be migrated*
  - ▶ *Modify application programs at a controlled pace*



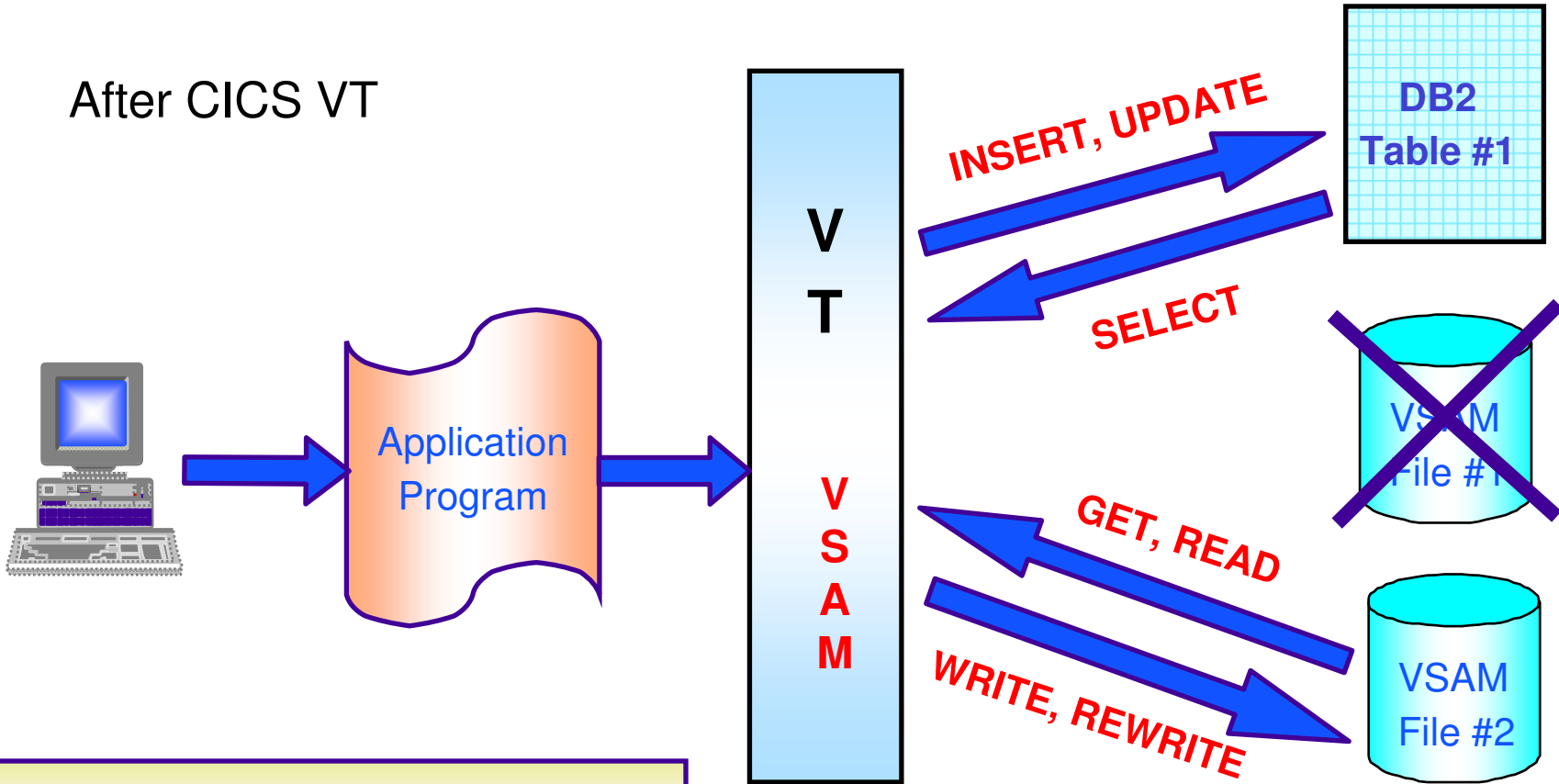
## CICS VT Capabilities

- Completely separate from application program
- Transparent access to data in DB2
- 100% static SQL
- Migrate on a file by file basis
- Data can be re-engineered
  - ▶ **Same data returned to VSAM programs**
  - ▶ **Enhanced data available using SQL**

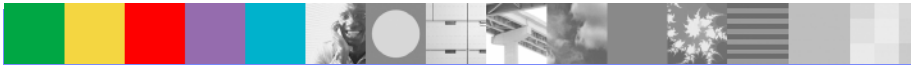


# WHAT EXACTLY IS CICS VT?

After CICS VT



*Application programs unchanged*



# CICS VSAM Transparency for z/OS (CICS VT)

## ■ Key features

- ▶ Migrate VSAM files to DB2
  - without changing application programs
  - single copy of the data
- ▶ CICS programs access data via GLUE/TRUE access
- ▶ Batch programs access DB2 via CICS VT
- ▶ Cleansing migration utilities
- ▶ Add SQL to existing programs
- ▶ No additional region / STC required

## CICS Support

- ▶ CICS Transaction Server for z/OS, V2 and V3
- ▶ CICS Transaction Server for OS/390 V1.3

## **New in CICS VT V1.2**

- **CICS TS V3.2 support without modification**
- **CICS TS V3.2 threadsafe File Control API performance benefits**
- **Dual Mode Facility assists with testing of migrated data**
- **Automated Mapping Facility now supports PL/I and Assembler**
- **Re-entrant SQL driver modules**



## For more information

### Tools WEB sites

- ▶ CICS tools, including library: [www.ibm.com/cics/tools](http://www.ibm.com/cics/tools)
- ▶ WebSphere zSeries tools:  
[www.ibm.com/software/websphere/zadportal](http://www.ibm.com/software/websphere/zadportal)
- ▶ Try CICS tools for free for 60 days  
[www.ibm.com/software/os/zseries/trials/cicstools](http://www.ibm.com/software/os/zseries/trials/cicstools)

### Program numbers

5655-P30: CICS VSAM Recovery  
5697-I76: CICS VSAM Transparency





# Polling Questions

**Q1. Please evaluate your level of satisfaction with today's teleconference**

If it was High, press STAR ONE

If it was Medium, press STAR TWO

If it was low, press STAR THREE

**Q2. Was the level of technical information presented in this teleconference**

If it was At the right level, press STAR ONE

If it was Not technical enough press STAR TWO

If it was More technical than I needed to hear, press STAR THREE

**Q3. Would you like more information on IBM's File Manager product?**

If yes press star one

If no press star two

**Q4. Would you like more information on IBM's Application Performance Analyzer product?**

If yes press star one

If no press star two

**Q5. Would you like more information on IBM's CICS VSAM Recovery product?**

If yes press star one

If no press star two

**Q6. Would you like more information on IBM's CICS VSAM Transparency product?**

If yes press star one

If no press star two

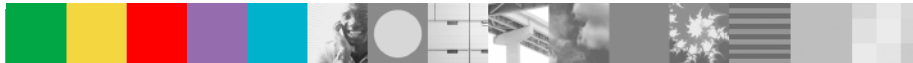
**Q7. We hope you have enjoyed the teleconference today. Please let us know if you are interested in receiving additional information or follow-up regarding the products discussed today.**

If yes press star one

If no press star two



# Question and Answer



# Thank You for Joining Us today!

Go to [www.ibm.com/software/systemz](http://www.ibm.com/software/systemz) to:

- ▶ Replay this teleconference
- ▶ Replay previously broadcast teleconferences
- ▶ Register for upcoming events

