



IBM Software Group

# Integrated Server and Virtual Storage Management

***an IT Optimization Infrastructure Solution  
from IBM Small and Medium Business Software***

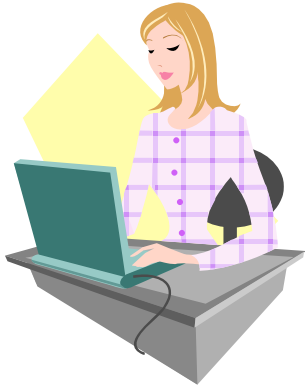


## Agenda

- Business Challenges and Pains
- What's Needed
- The Solution
- Solution Hardware Highlights
- Solution Architecture
- Solution Software
- Solution Summary
- Additional Information



# Business Challenges and Pains



## IT Manager:

- How can I reduce the number of servers on my floor?
- How can I increase the productivity of my IT staff that is managing and monitoring my application servers?
- Is there a better way to prepare for and test the deployment of a new application?



## IT Administrator:

- How can I reduce the time it takes to back up multiple standalone servers?
- How can I alleviate the network bottlenecks during the backup window?



## Employee:

- I have different user IDs on the Windows and i5/OS servers that I have access to, why can't they all be the same?





## What's Needed

A way to create and deploy an easy-to-use server and storage virtualization solution:

- ❑ **Physical Consolidation** - A way to replace smaller servers with fewer and more powerful systems
- ❑ **Network Integration** - Virtualize network and access thus simplifying deployment and management of network resources
- ❑ **Integrated operations** - Reduce the number of physical locations that need to be managed
- ❑ **Simplified Storage Management** – have a single pool of virtual storage for all servers to share
- ❑ **Flexible server deployment** – quickly recover from hardware failures and manage configurations for test and productions servers



## Solution Benefits

- Simplify management of IT resources
- Save time and effort by consolidating backups and using high-speed tape drives
- Maintain business continuity by protecting consolidated resources
- Synchronize Windows and i5/OS user IDs and passwords
- Simplify network configuration, data access, and application communication with Virtual Ethernet LAN (VE LAN) between the System i and System x servers
- Increase business agility by providing a flexible server deployment strategy

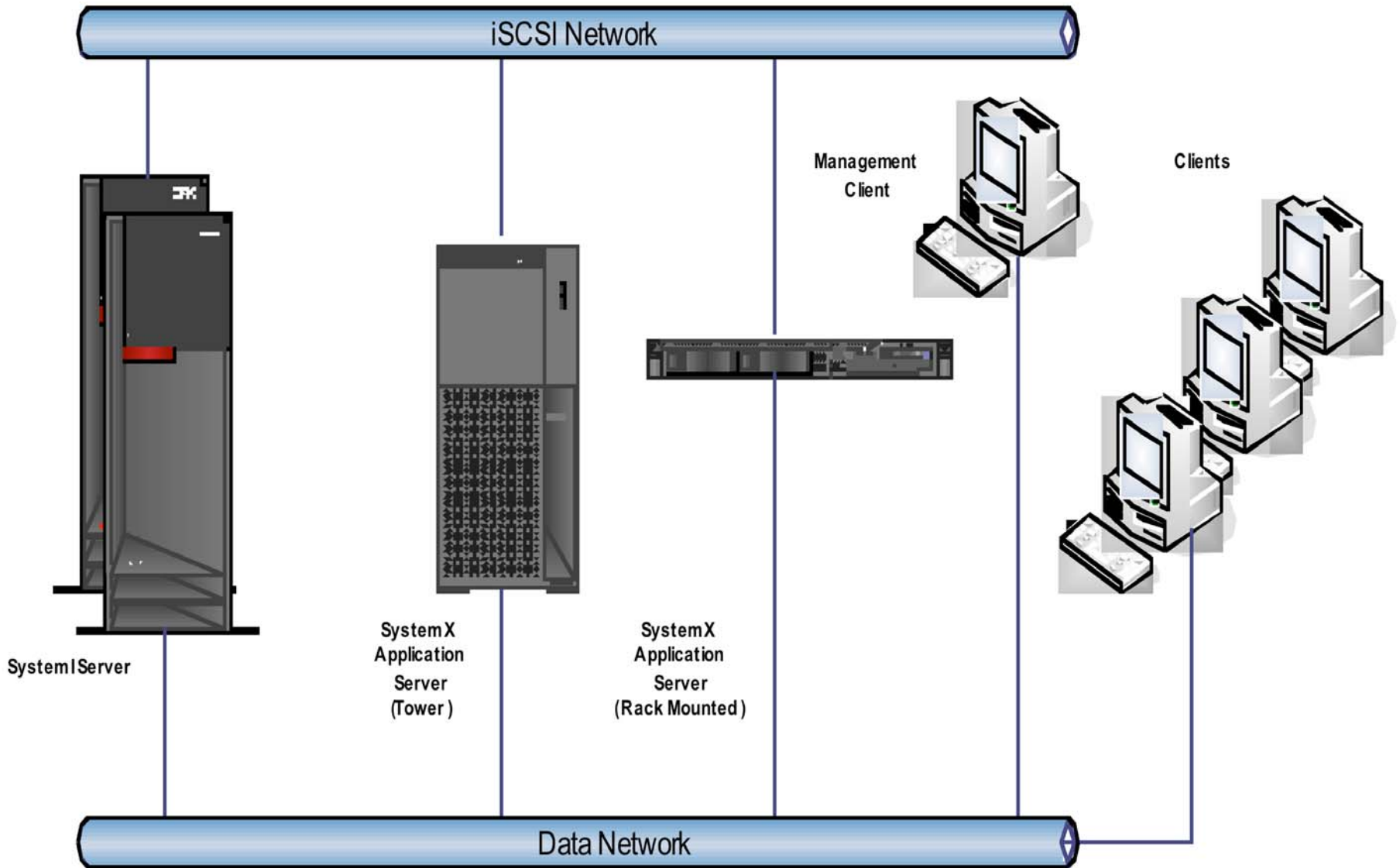


## Solution Hardware Highlights

- System i
  - ▶ Use your current System i server and add an iSCSI card
- Two System x configurations to meet your requirements
  - ▶ Tower system
    - x3500 3.0GHz dual-core Xeon processor, 2MB of L2 cache, 4GB of memory
    - iSCSI card
    - Remote Supervisor Adapter-2 (RSA II) for connection to the System i integrated server
  - ▶ Rack-mount
    - x3550 3.0GHz dual-core Xeon processor, 2MB of L2 cache, 4GB of memory,
    - iSCSI card
    - Remote Supervisor Adapter-2 (RSA II)



# Solution Architecture

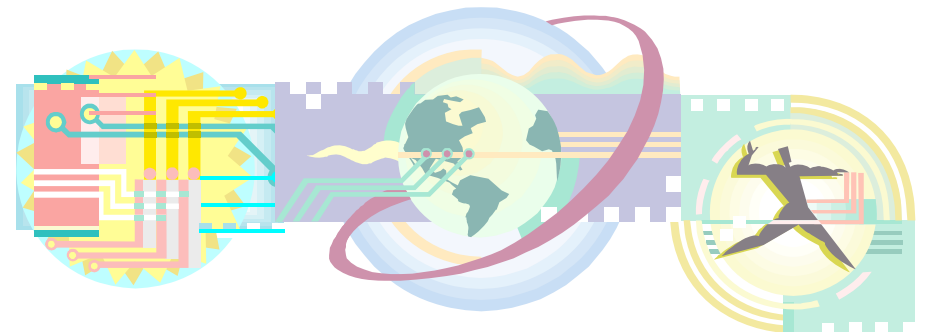


## Solution Summary

With the Integrated Server and Virtual Storage Management Solution Starting Point, you can simplify your IT infrastructure through simplification and integration.

This provides the ability to:

- ▶ Simplify the deployment and management of server assets
- ▶ Leverage their investment of System i
- ▶ Reduce administrative and maintenance costs
- ▶ Simplify their Windows infrastructure
- ▶ Centralize the backup of their server resources
- ▶ Synchronize user registries for their servers







# Additional Information

## IBM Director

- **IBM Director is an integrated, easy-to-use suite of tools that provides customers with flexible systems management capabilities to help realize maximum system availability and help lower IT costs. With IBM Director, IT administrators can view and track the hardware configuration of remote systems in detail and monitor the usage and performance of critical components, such as processors, disks and memory.**
  - ▶ Provided at no additional charge for use on IBM Systems
  - ▶ Extensions to IBM Director are available for customers who want additional capabilities from a consistent, single point of management
  - ▶ Complements and integrates with other popular systems management products via its upward integration modules

For more information, please visit:

<http://www.ibm.com/systems/management/director/>

