



What's new in FileNet

Marcel Košťál, IBM Slovakia

marcel.kostal@sk.ibm.com

Viktor Beňo, IBM Slovakia

vbeno@sk.ibm.com



Agenda

Filenet platform features

ECM UI Strategy

New features in CM

New features in BPM

Migration

Demo



Filenet Platform Features



Document imaging and capture

Capture, manage and share content anywhere it exists



Social content management

Connect people with social content and office documents



Advanced case management

Optimize case and business outcomes



Information lifecycle governance

Reduce cost and risk by managing information through its lifecycle

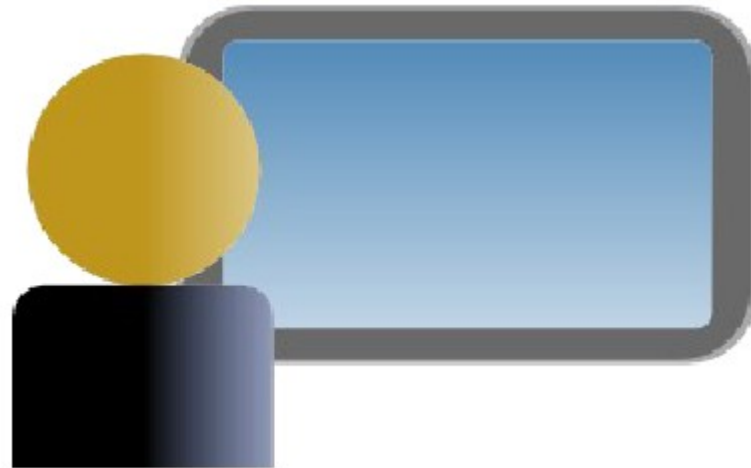


Content analytics

Gain unexpected business insights



IBM Content Navigator “Nexus”





ECM UI Strategy

- Collaborative content management
- Content accessible from anywhere including mobile
- Unified user experience for P8, CM8, CMOD
- Reusable components
- Flexible customization

Name	Last Modifier	Date Last Modified	Major
Reference material	P8Admin	10/9/2011 11:23 PM	
Atlanta TEC Capital Lease Contract.pdf	rhowarth	10/19/2011 3:20 PM	
Atlanta TEC Computer Hardware Contract.pdf	rhowarth	10/19/2011 3:20 PM	
Atlanta TEC Invoice.doc			
Atlanta TEC Midwest Lease Agreement			
Atlanta TEC.ppt			

Name	Date Modified	Modified By	Version
Auto Claims	4/2		
Benefits Management	7/1		
CodeModules	4/2		
Focus Finance	4/2		
Focus Healthcare	6/1		
IBM Case Manager	7/1		
Integrated Justice	4/2		
Onsite Intelligence Gathering	10		
Polestar	5/1		
Not defined	10		
Not defined	10		

Document Information
Properties
Folder Name: Refer
System Properties
Added By: Richardson, Bill
Added On: 10/9/2011 8:51 PM
ID: (7546B284-1743-4400-A145-E4671A496D44)
Path Name: /Customer Contracts/Account 25-13652/Reference material



External data services

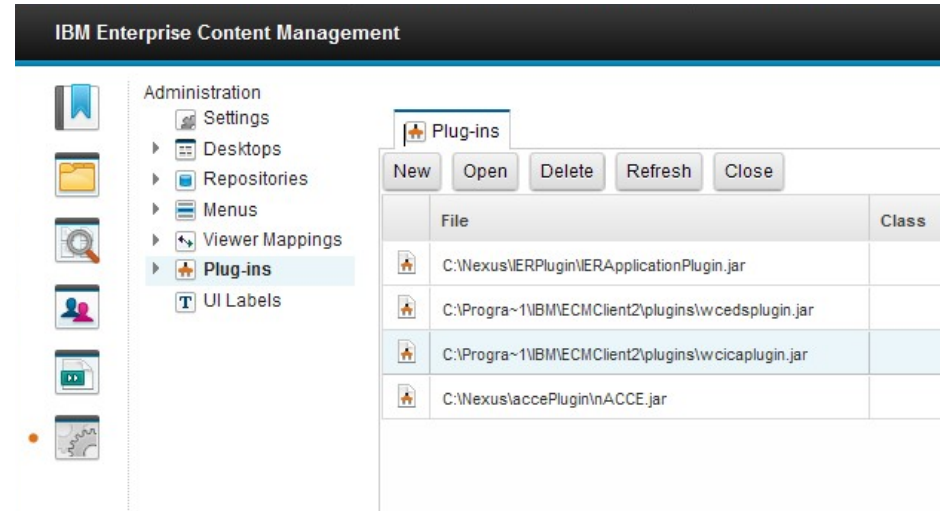
- OOTB UI functionality
 - Applies to add document, checkin, modify properties, search and workflow
- External choice lists
 - Locations, Part numbers, Approvers, ...
- Dependencies between properties
 - E.g. Country, City
- Set default or dynamic values
- Property value and format validation
 - External or regular expressions
- Dynamic properties
 - Hide/show & read-only/write



Extending Nexus

- Third party or customer created Dojo dijits
- Customer menu and tool bar actions
- Customer developed layouts

- Examples of plugins
 - ICA integration
 - EDS services
 - ...



- Note: Plugins and customizations do not change Nexus core code.
 - They are deployed alongside the Nexus EAR
 - Upgrades will be simpler because of this boundary





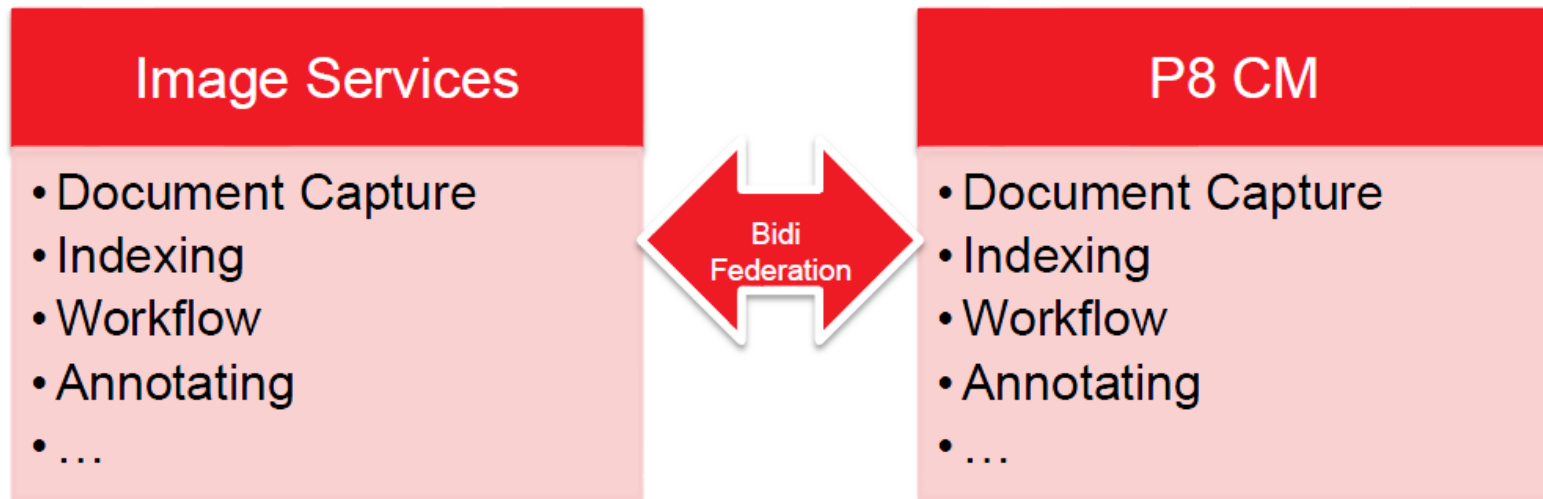
Content Manager features

- Enterprise features
 - Content Federation Services
 - Content Search (fulltext)
 - Workplace XT and Webparts
 - Bulk Import Tool
 - Large domain support
 - Composite Platform Installation Tool
 - Content storage encryption
- Developer features
 - Change preprocessors
 - Javascript event handlers
 - FileNet Deployment Manager
 - Task
 - .NET API over WCF (Windows® Communication Foundation)
 - DIME support removed



Content Federation Services

- BiDirectional support for Image Services 4.2
- Active applications on both environments
 - Document creation, metadata change and annotations managed



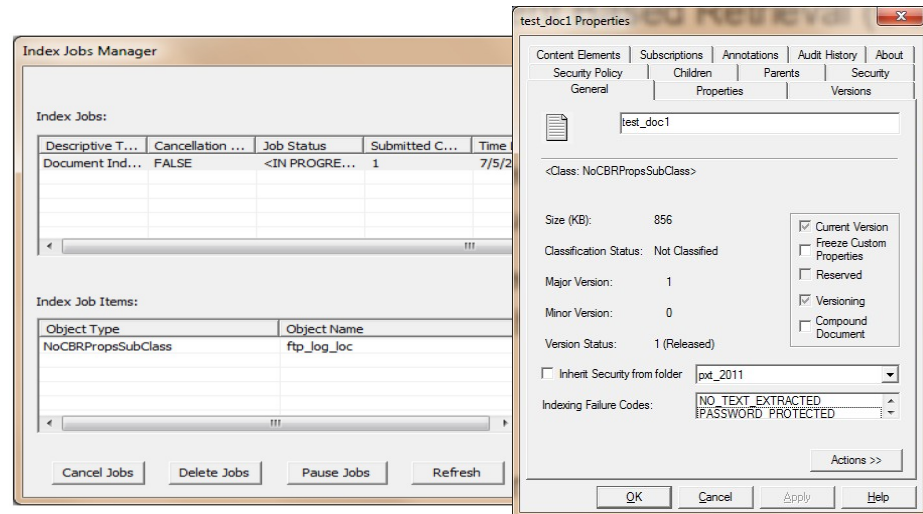
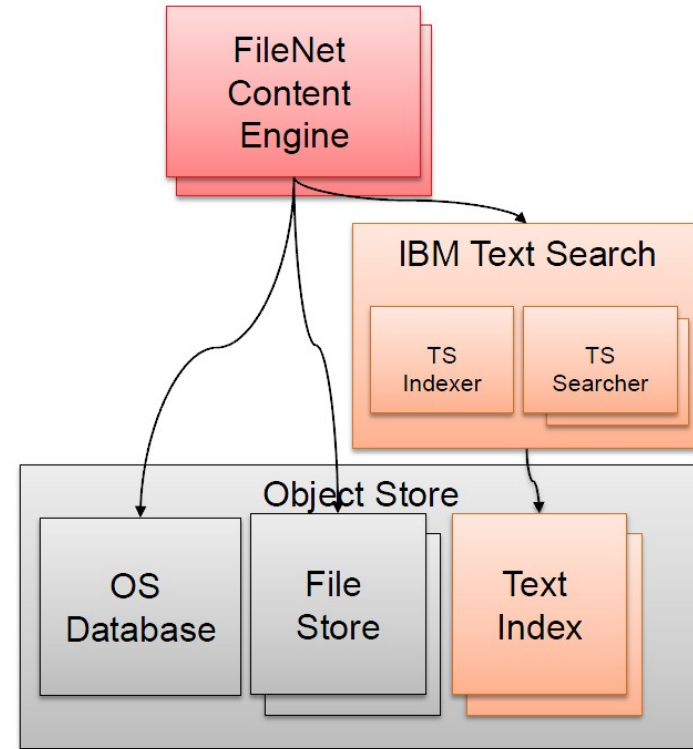
Other repositories with no change:

- CMOD - bidirection just for Delete
- Content Integrator (CM, OpenText, Documentum) - unidirectional



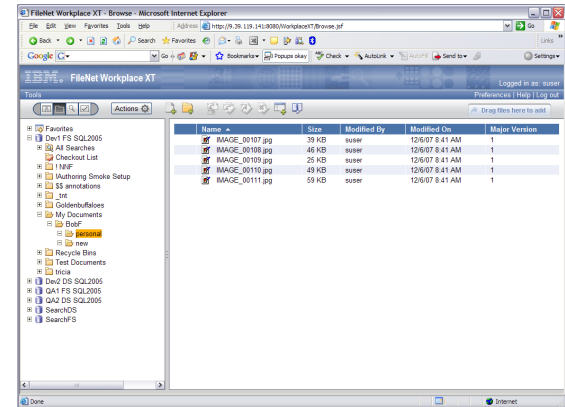
Content Search

- IBM Content Search Services
- IBM Legacy Content Search Engine
- Supports for:
 - Workplace XT
 - SharePoint Webparts
 - Custom applications
- Enhanced administration and diagnosis
 - FEM and API
 - Configurable logging level
 - Status and failure reasons
 - Core files, Manual Indexing, P8 object ids in CSS logs (CSS Only)
- Max text size increase (CSS only)
 - Up to 300MB of extracted text can be indexed (depending on memory config)
- SSL for CE to CSS server communications (new for CSS only)

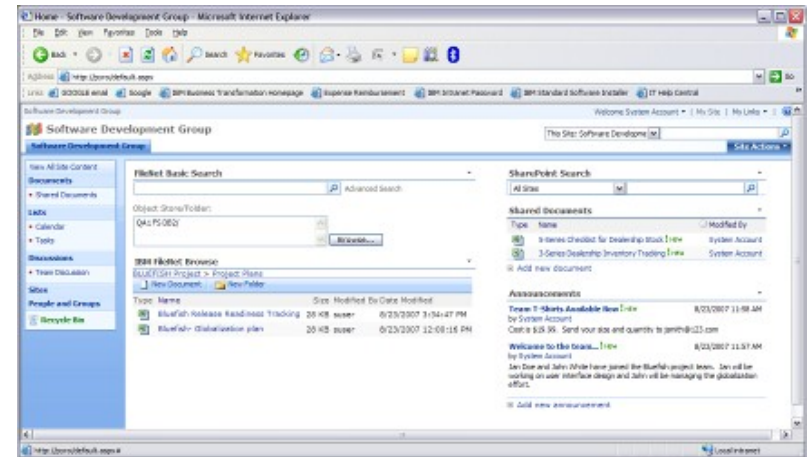


Workplace XT and Webparts

- Advanced search design tool for Workplace XT
- Content search modifiers are different between LCSE and CSS
- New User Preference for list view columns
 - Configured per Object Store
 - Overrides Site Preference
 - Folder Preferences override is optional
- Federated CMOD document viewing
 - On-the-fly transformation to PDF
 - CMOD viewer (AFP plugin)



- Webparts:
 - Support for Content Search Services
 - Supports SP2010



Bulk Import Tool

- Tool that monitors file system folders for bulk document ingest with index information
- Based on Image Services HP11 processing model
- 1M+ documents/day
- Platform and File System support
 - Initial support for Windows & Red Hat Enterprise Linux (RHEL)
 - Post qual for AIX, SUSE x86 & zLinux (RHEL and SUSE)

Note: The entitlement to this feature currently is restricted to licensees of PIE. Individual licensing is under investigation



Large domain support

- Maximum number of object stores for Content Engine
 - 750 object stores using a WAS 64bit
- New Support Statement
 - "If the application server where you are deploying Content Engine is running on a 32-bit JVM, it is a best practice to create no more than 75 Content Engine object stores. On most 64-bit JVMs, it is a best practice to create no more than 150 object stores. However, if sufficient system and database resources are available, IBM WebSphere Application Server 7.0 with the 64-bit IBM JVM and WebSphere Compressed Reference Technology supports up to 750 object stores. "



Composite Platform Installation Tool

- User-defined Administrator Password is now supported.
 - Tivoli Web Admin Tool is now installed and configured
 - DB2 Restrictive License is installed
 - P8 domain object store now configured with Admins group as owner
 - Installation error handling is improved
-
- **Note: Tivoli Directory Services (TDS) version 6.3 is now included as a non-chargeable, bundled component with FileNet CM v5.1 (for use only with FileNet CM)**



Content storage encryption

- All storage areas supported - database, file storage, and fixed
- Encryption enabled at storage area level
- FIPS-140 compliant (AES-CTR algorithm)
- Estimated cost of 5% - 20% in transfer time for create and retrieval
- Keys can be generated by the repository or externally generated and managed
- Encryption performed when content is created or moved to an encrypted storage area
- Encryption can be enabled (or disabled) at any time
 - Existing content is not changed. Only new content affected by the state
 - Encryption status stored with content element
 - Document.moveContent can be used to relocate content to an encrypted storage area (or visa versa)
- Can be enabled on storage areas with content de-duplication enabled



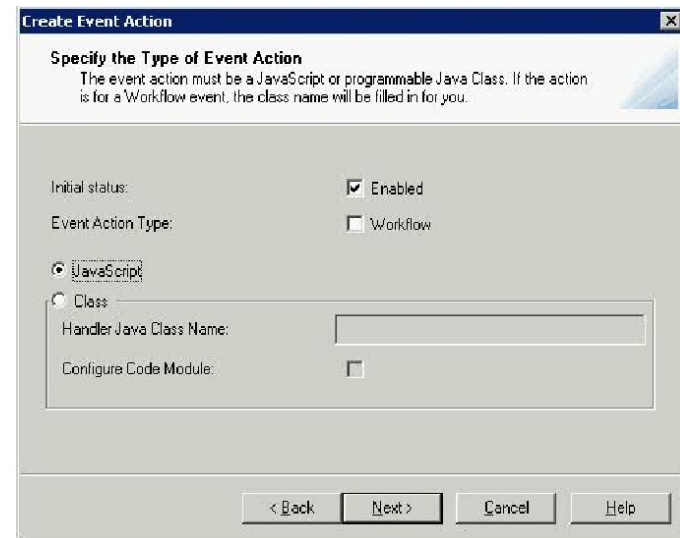
Change preprocessors

- New server extensibility option, allowing custom code to update properties of the target object during the change process
- Addresses a long standing constraint of synchronous event handlers:
 - They do not allow properties of the target object to be updated.
 - Alternative to using an asynchronous event handler also has constraints
- Change preprocessors run before any server database changes have occurred, allowing custom code to modify properties of the target object in memory, before anything is written to the database
- Change Preprocessor Definitions are defined on a class definition and are independent of event actions



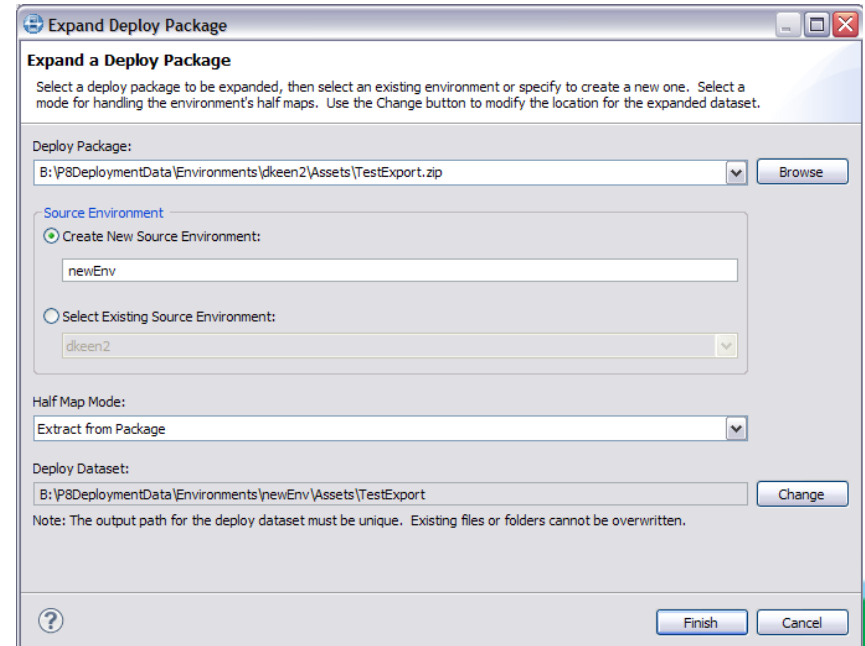
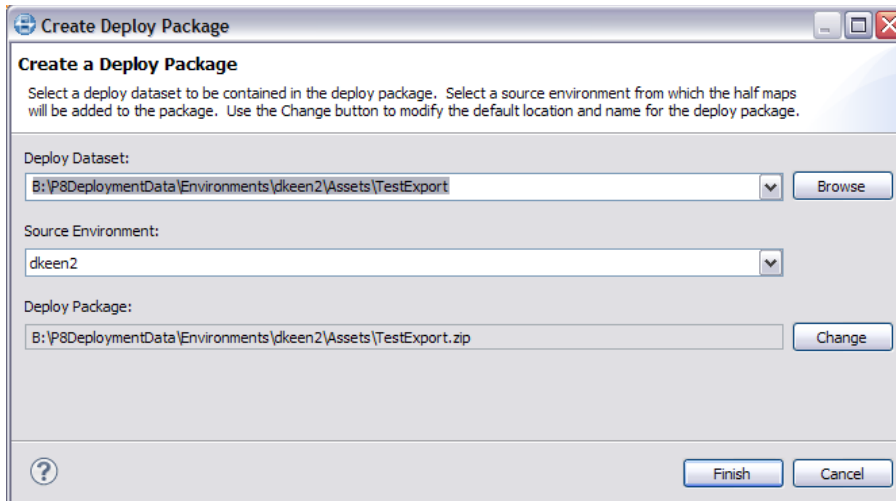
Javascript event handlers

- Ability to implement custom server extensibility actions in JavaScript
- Previous releases require that allows custom actions be implemented in compiled Java, packaged in a jar file
- Similar to the VBScript support that was available in the Content Engine 3.x release line
- Applies for all of the Content Engine server extensibility points, including:
 - Synchronous Event Actions
 - Asynchronous Event Actions
 - Document Lifecycle Actions
 - Document Classification Actions
 - Change Preprocessor Actions



FileNet Deployment Manager

- Single file deployment packages —pack and go||
 - Simplifies moving/copying fully mapped applications
 - Easy to archive versions of applications
 - Uses zip archive format
 - Can unpack complete mapped application or just half map



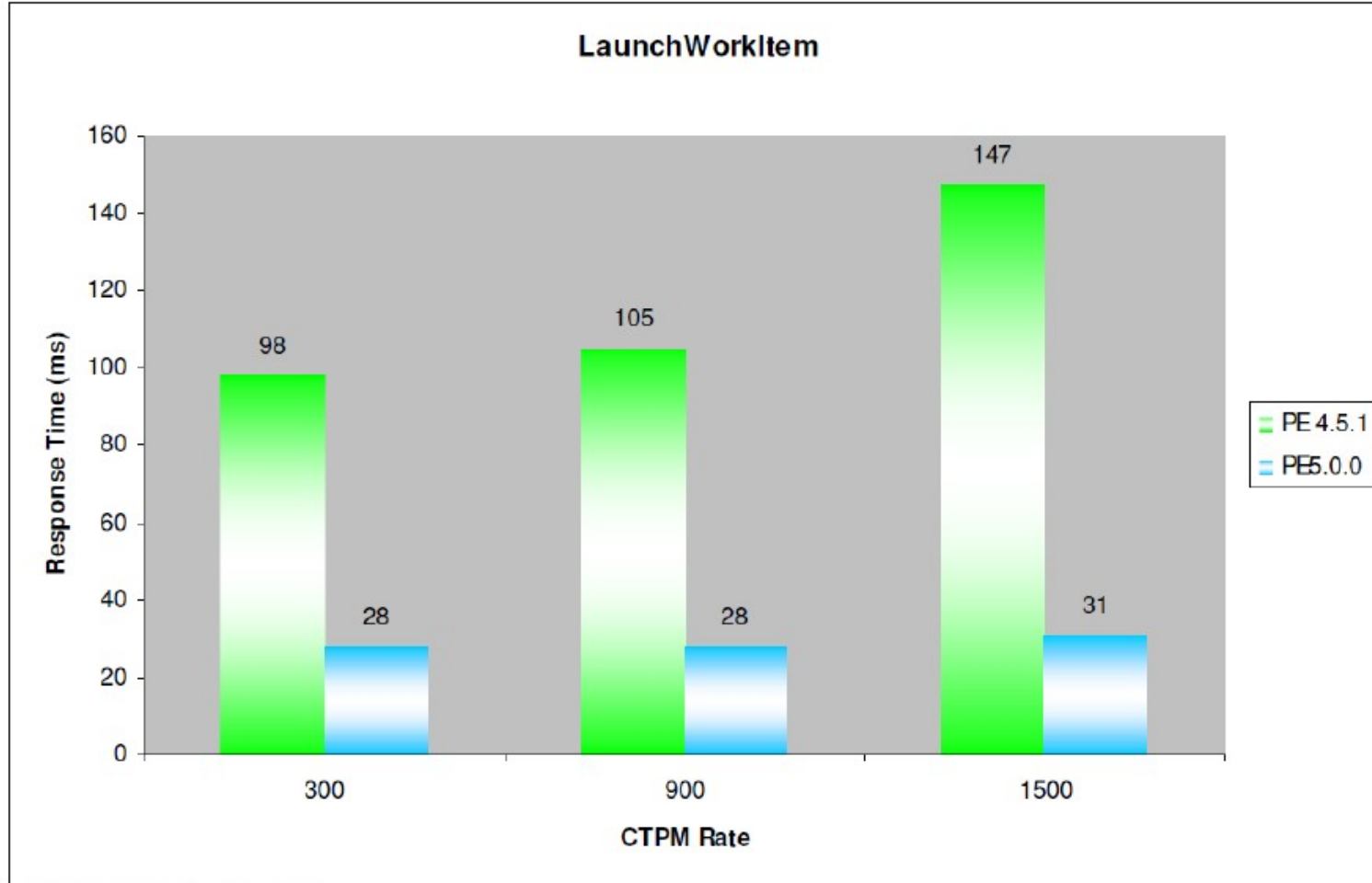
Business Process Manager features

- Process Engine is now a standard Java application
- Increased performance and usability
- Full API compatibility and feature transparency
- Uniform operating system support across P8
- Simplified installation and configuration
- Process Analyzer is now Case Analyzer with Cognos BI support



Increased performance – Response Times

- 60% or better improvement in response time across Java, REST, and CEWS APIs for benchmarked configuration*. Java API results shown.

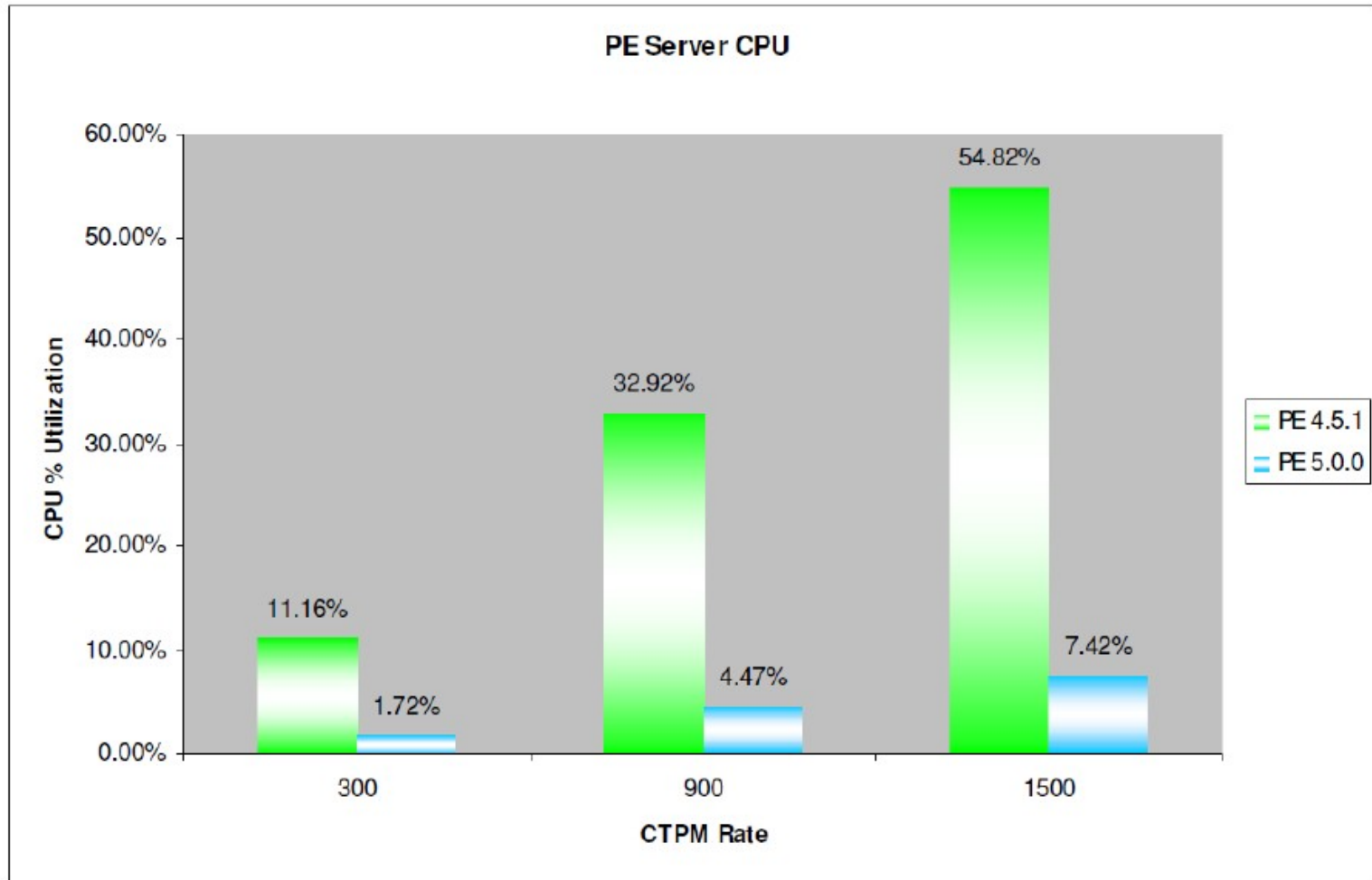


* Your mileage may vary



Increased Performance - CPU

- Minimum of 70% reduction in CPU utilization across Java, REST, and CEWS APIs for benchmarked configuration*. Java API results shown.

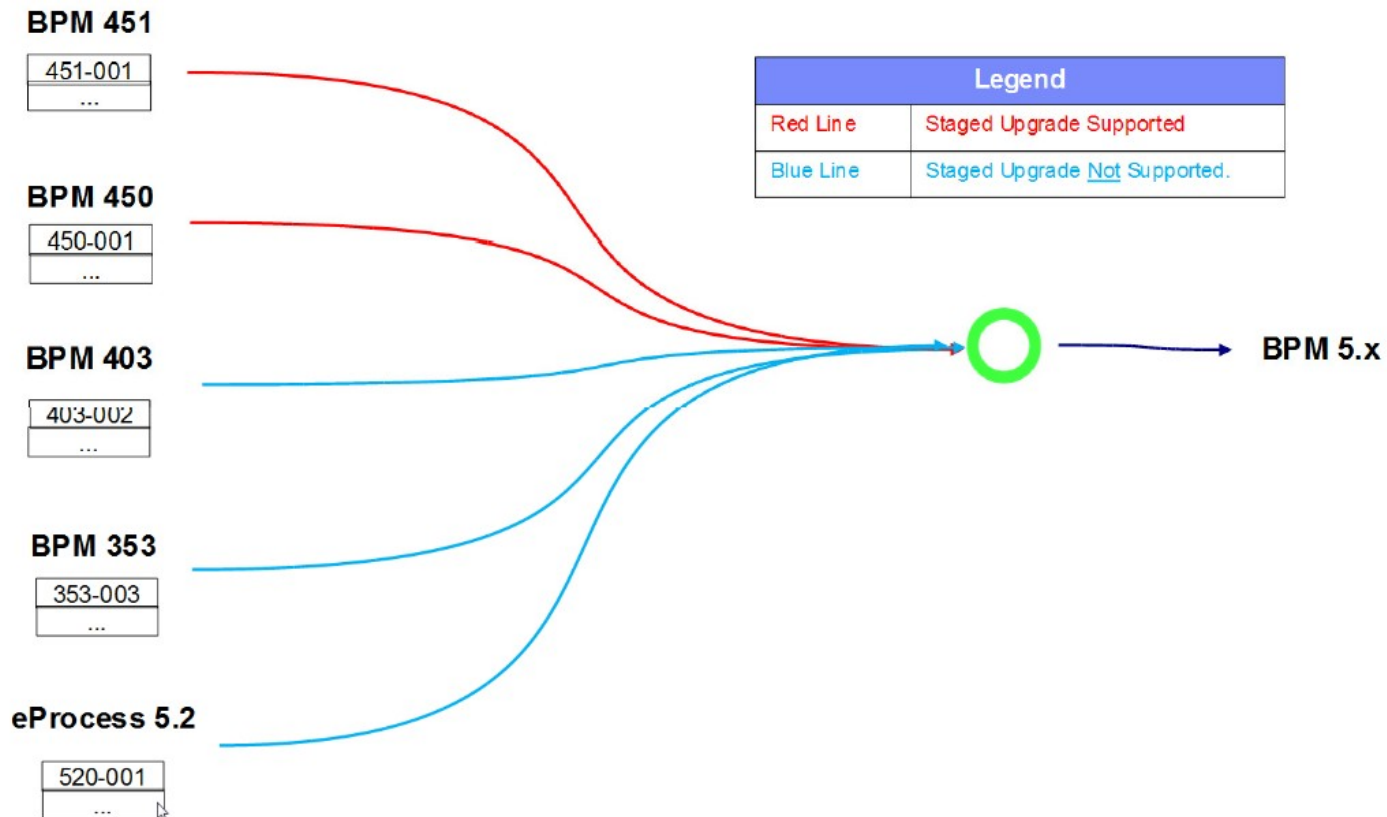


* Your mileage may vary



Migration

- Standard upgrade
- Staged upgrade: AE, CE, PE
- BPM 5.0 deployment paths



Demo

- Customized columns in Workplace XT
- MS Office integration
- Audit filter, disposition, property
- Inherit only security
- Queries
 - IsOfClass – finds also subclasses
 - Satisfies – any item of the list satisfies the condition
 - Intersects – any items of the list contains any member of the set
 - IS NULL or IS NOT NULL – check empty lists
- Javascript extensions in change preprocessors



Questions?





Links / resources

- Filenet CM v 5.0.0 release notes:
<http://publib.boulder.ibm.com/infocenter/p8docs/v5r0m0/topic/com.ibm.p8.rel>
- Filenet BPM v 5.0.0 release notes:
<http://publib.boulder.ibm.com/infocenter/p8docs/v5r0m0/topic/com.ibm.p8.rel>
- Filenet CM v 5.1.0 release notes:
<http://publib.boulder.ibm.com/infocenter/p8docs/v5r1m0/topic/com.ibm.p8.rel>

