

IBM Security Identity Manager
Version 7.0.1.10

Security Topics



IBM Security Identity Manager
Version 7.0.1.10

Security Topics

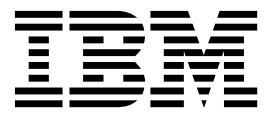


Table of contents

Table list	v	Changing the logoff page.	31
Chapter 1. Application server security and IBM Security Identity Manager . . .	1	Creating a user in IBM Security Access Manager that WebSEAL uses to connect to the backend server	32
Chapter 2. External user registry for authentication	3	Defining IBM Security Access Manager Accounts	33
Chapter 3. Secure environment practices	5	Defining IBM Security Access Manager groups	34
Chapter 4. Secure sockets layer communication	7	Adding IBM Security Access Manager user account to a group	35
SSL terminology	7	Defining a junction that points to IBM Security Identity Manager Server	35
One-way and two-way SSL authentication	8	Defining IBM Security Access Manager ACLs	37
SSL in a clustered environment	9	Granting access to the IBM Security Access Manager ACLs	37
SSL implementations	9	Associating the WebSEAL junction to the ACLs	39
Chapter 5. Certificate file types	11	Configuring IBM Security Identity Manager to use single sign-on	40
Chapter 6. Securing of communication with adapters	13	Configuring WebSEAL.	40
Chapter 7. Securing of communication with custom applications	15	IBM Security Identity Manager web services in a single sign-on environment	41
Chapter 8. Secure communication with supported middleware	17	Installing on a system where the IBM Security Identity Manager is installed	42
Example SSL configurations	17	Installing on a separate system than where the IBM Security Identity Manager is installed	44
Preparation for SSL configuration	18	Starting the SSO application	46
Creating a certificate	18	Testing the SSO application	47
Configuring SSL for the database server	20	Building the SSO application	47
Configuring SSL for the directory server	20	Preparing the WebSphere Application Server	48
Configuring SSL on the application server	21	Accessing IBM Security Identity Manager consoles	50
Configuring the IBM Security Identity Manager Server	22	Frequently used commands to configure single sign-on	51
Testing SSL communication between servers	23	Chapter 10. Security layer configuration around the data model and reports	55
Configuration of the HTTP server for additional security and performance.	24	Authentication and authorization for IBM Cognos reports	55
SSL for the IBM HTTP server and Application server plug-in	25	User authentication setup by using LDAP	55
Configuring SSL for the IBM HTTP server	25	Configuring an LDAP Namespace for IBM Directory Server	55
Configuring SSL for the plug-in	26	Creating users in an LDAP	57
Chapter 9. Configuration of single sign-on	29	Access control definition for the reports and reporting packages	58
Configuration of IBM Security Identity Manager for single sign-on with Application server Trust Association Interceptor and IBM Security Access Manager WebSEAL.	29	Restricting administration access and adding an LDAP user to system administrator role	58
Account mapping	30	Creating a role and adding LDAP users as members	59
		Defining an access to the report by using a role	60
		Defining an access to the reporting package by using a role	60
		References for IBM Cognos report security configuration	61
		Index	63

Table list

1. Practices for a secure IBM Security Identity Manager environment	5	3. Files in the /certs directory	19
2. Example SSL configurations	18	4. Logoff pages	31
		5. LDAP advanced mapping values	56

Chapter 1. Application server security and IBM Security Identity Manager

IBM® Security Identity Manager uses Application server security.

IBM Security Identity Manager uses Application server security to enforce authentication and role-based authorization. Application server security includes administrative security. Application server administrative security must be enabled before IBM Security Identity Manager is installed. Application server security supports security domains, which can be used to define a security scope that is not global, but applicable to a specific application. Application server also supports application security. IBM Security Identity Manager requires Application server application security. You can enable application security at the security domain level, or you can enable it at the global security level.

When you install IBM Security Identity Manager, you select either the default custom registry that is provided with IBM Security Identity Manager, or you select an external user registry. If you choose the default custom registry, the installation program automatically creates a security domain that has application security enabled. If you select an external user registry, you must manually enable application security for the security domain that IBM Security Identity Manager uses.

The external user registry can operate at the global security level, or can be part of a specific security domain. If you select an external user registry that is used for global security, then you must enable application security for global security. If you select an external user registry that is associated with a security domain, then you must enable application security for that security domain.

For information on using an external user registry, see Chapter 2, “External user registry for authentication,” on page 3.

Chapter 2. External user registry for authentication

You can choose to use an external user registry instead of the default custom registry.

IBM Security Identity Manager provides a default custom registry. You do not have to use this registry for authentication. You can choose to use an external registry. An external user registry is any other registry that can be configured with Application server. You can use an existing registry or configure a new one.

For more information, see *Configuring the Identity external user registry*.

- If you use the custom registry, the IBM Security Identity Manager installation program programmatically creates a security domain, enables application security, and configures it to the IBM Security Identity Manager custom registry.
- If you use an external registry, you must manually configure application security.

To use an external user registry, you must complete specific configuration tasks.

See *Configuring the Identity external user registry*

External user registry example deployment

The IBM Security Identity Manager product distribution includes three documents that describe an example deployment with an external user registry. The following documents are included in the directory `/extensions/7.0/doc/authentication/`:

Do these steps to access the documents:

1. Log on to the IBM Security Identity Manager virtual appliance console to open the **Appliance Dashboard**.
2. From the top-level menu of the **Appliance Dashboard**, select **Configure > Advanced Configuration > Custom File Management** to display the Custom File Management page.
3. Click the **All Files** tab.
4. Go to `directories/utilities`.
5. Select `extensions.zip` and click **Download**.
6. Extract the `extensions.zip` file.
7. Go to `/extensions/version_number/doc/authentication/`. For example, *version_number* is `7.0`.

Chapter 3. Secure environment practices

These practices can help ensure a secure IBM Security Identity Manager environment.

Table 1. Practices for a secure IBM Security Identity Manager environment

Given sensitive data in these areas	Ensure that these practices occur
Database data	Restrict operating system access to database files. Limit the privileges of the operating system accounts (administrative, root-privileged, or DBA) to the least privileges needed. Change the default passwords. Enforce periodic password changes. See the security information in the database documentation for more details.
Database logs	Restrict operating system access to log and trace files. Limit the privileges of the operating system accounts (administrative, root-privileged, or DBA) to the least privileges needed. Change the default passwords. Enforce periodic password changes. See the security information in the database documentation for more details.
Database backups	Store database backups at safe and secure locations. Guard against leaks or exposure of sensitive and confidential information. See the security and backup information in the database documentation for more details.
LDAP data	Securely handle any LDAP data that contains sensitive information. Sensitive information includes disabling anonymous read, enabling SSL, and restricting access to privileged and authorized operating system and application users. See the security information in the LDAP directory server documentation for more details.
LDAP logs	Restrict access to log files in the log directory of the directory server to privileged and authorized operating system and application users. This restriction is especially important if you enable audit logging for the directory server. See the security information in the directory server documentation for more details.
LDAP backups	If LDIF files contain sensitive information, store them safely and handle them securely.
IBM Security Identity Manager logs	If Security Identity Manager logs in the <code>path/ibm/tivo.../common/CTGIM</code> directory contain sensitive information, restrict access to them.
Directories under <code>ISIM_HOME</code>	If the data, configuration, and installation logs contain sensitive information, restrict access to the directories in <code>ISIM_HOME</code> .

Table 1. Practices for a secure IBM Security Identity Manager environment (continued)

Given sensitive data in these areas	Ensure that these practices occur
Network traffic	Restrict network traffic to what is required by the deployment. If you write your own application and use an IBM Security Identity Manager API to retrieve sensitive data, encrypt the data before you send it over the network.
WebSphere® Application Server security	Enable security on WebSphere Application Server and disallow running WebSphere Application Server with a non-root account.

Chapter 4. Secure sockets layer communication

The industry-standard Secure Sockets Layer (SSL) protocol uses signed digital certificates from a certificate authority (CA) for authentication. It provides secure communication in an IBM Security Identity Manager deployment.

SSL provides encryption of the data that is exchanged between the applications. An application that acts as an SSL server presents its credentials in a signed digital certificate to verify to an SSL client that it is the entity it claims to be. You can also configure an application that acts as an SSL server to require the application that acts as an SSL client to present its credentials in a certificate. This method completes a two-way exchange of certificates.

SSL terminology

These terms apply to Secure Sockets Layer communication for IBM Security Identity Manager.

SSL server

Listens for connection requests from SSL clients. For example, the IBM Security Directory Server might be an SSL server that listens for connection requests from the IBM Security Identity Manager Server and the WebSphere Application Server.

SSL client

Issues connection requests. For example, the computer on which the IBM Security Identity Manager Server and the WebSphere Application Server are installed is the SSL client, which issues connection requests to the IBM Security Directory Integrator.

Signed certificates

Is an industry-standard method of verifying the authenticity of an entity, such as a server, client, or application. Signed certificates are issued by a third-party certificate authority for a fee. Some utilities, such as the iKeyman utility, can also issue signed certificates. A certificate authority or CA certificate must be used to verify the origin of a signed digital certificate.

Signer certificates (certificate authority certificates)

Must be used to verify the origin of a signed digital certificate. When an application receives a signed certificate from another application, it uses a CA certificate to verify the originator of the certificate. Many applications, such as web browsers, are configured with the CA certificates of well-known certificate authorities. This practice eliminates or reduces the task of distributing CA certificates throughout the security zones in a network.

Self-signed certificates

Contains information about the owner of the certificate and the owner of the signature. Basically, it is a signed certificate and CA certificate in one. If you choose to use self-signed certificates, you must extract the CA certificate from it in order to configure SSL.

SSL keystore

Is a key database file designated as a keystore. It contains the SSL certificate.

Note: The keystore and truststore can be the same physical file.

SSL truststore

Is a key database file designated as a truststore. The SSL truststore contains the list of signer certificates (CA certificates) that define which certificates the SSL protocol trusts. Only a certificate issued by one of these listed trusted signers is accepted.

Note: The truststore and keystore can be the same physical file.

One-way SSL authentication

Requires a keystore and certificate only on the SSL server side (such as the Security Directory Server) and a truststore only on the SSL client side (such as the Security Identity Manager Server).

Two-way SSL authentication (client-side authentication)

Requires a keystore with a certificate and a truststore that contains the signer of the certificate that issued the other certificate on both the SSL server and client.

One-way and two-way SSL authentication

Configuring communication between an SSL server and client can use one-way or two-way SSL authentication. For example, the SSL client is the computer on which the IBM Security Identity Manager Server is installed, and the SSL server is the IBM Security Directory Server.

One-way authentication creates a truststore on the client and a keystore on the server. In this example, CA certificate "A" exists in the truststore on the SSL client and also in the keystore on the SSL server.

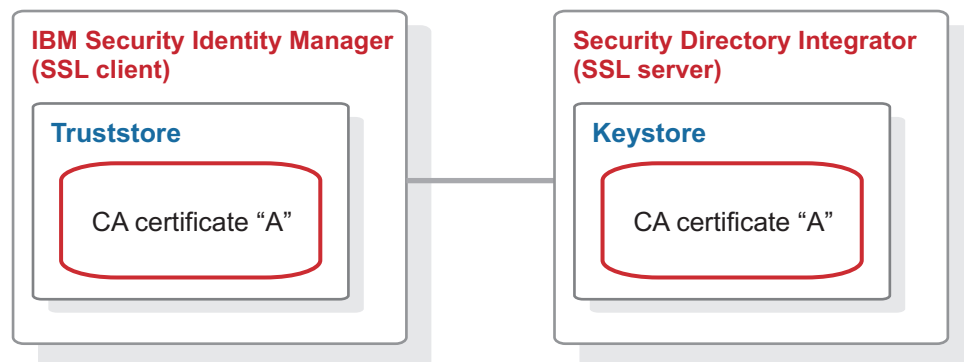


Figure 1. One-way SSL communication

Two-way authentication creates a truststore and a keystore on both the client and the server. In this example, there is a CA certificate "A" in the truststore and a CA certificate "B" in the keystore on both client and server.

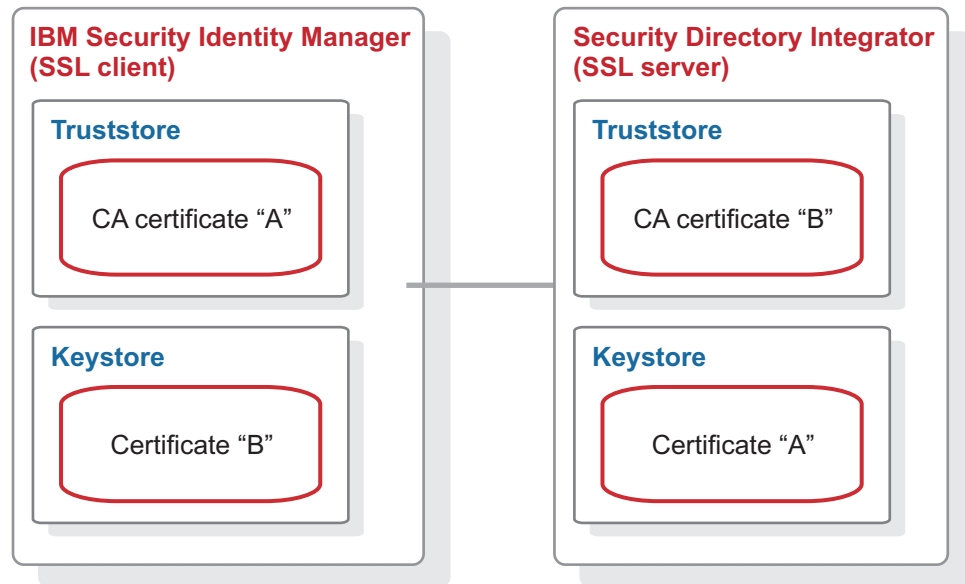


Figure 2. Two-way SSL communication

For more information about configuring SSL communication between the IBM Security Identity Manager Server and an IBM Security Identity Manager adapter, see the installation and configuration guide for the adapter.

SSL in a clustered environment

Communication between an SSL server and client can use one-way or two-way SSL authentication. For example, the SSL client is the computer on which the IBM Security Identity Manager Server is installed. The SSL server is the IBM Security Directory Server.

1. From the top-level menu of the **Appliance Dashboard**, click **Configure > Manage Server Setting > Single Sign-On Configuration**.
2. On the Single Sign-On Configuration page, click **Configure**.
3. In the Single Sign-On Configuration Details window, specify the expected variable values.
4. Click **Save Configuration** to complete this task.

For more information, see *Managing the single sign-on configuration*.

SSL implementations

IBM Security Identity Manager Server uses several implementations of the SSL protocol.

IBM Security Identity Manager Server uses these implementations of the SSL protocol:

IBM Global Security Toolkit (GSKit)

Used by the WebSphere Application Server, IBM Security Directory Server, and IBM Security Identity Manager adapters.

IBM Java™ Secure Socket Extension (JSSE)

Used by the IBM Security Identity Manager Server and by IBM Security Directory Integrator

OpenSSL

Used by IBM Security Identity Manager Server Adapter Development Kit (ADK)-based adapters.

Chapter 5. Certificate file types

Certificates and keys are stored in several types of files.

Files that store certificates and keys can have the following formats:

.pem A privacy-enhanced mail file with a file extension of `.pem`. It begins and ends with the following lines:

```
-----BEGIN CERTIFICATE-----  
-----END CERTIFICATE-----
```

A privacy-enhanced mail format supports multiple digital certificates, including a certificate chain. If your organization uses certificate chaining, use this format to create CA certificates.

.arm A file with an extension of `.arm` contains a base-64 encoded ASCII representation of a certificate. It includes its public key but not its private key. The IBM Key Management utility generates and uses an `.arm` format. Specify this format to extract a self-signed certificate from the computer on which it was generated to the computer that uses it as the CA certificate.

.der A file with an extension of `.der` contains binary data. This format can be used only for a single certificate, unlike a file with a privacy-enhanced mail format, which can contain multiple certificates. Specify this format to extract a self-signed certificate from the computer on which it was generated to the computer that uses it as the CA certificate.

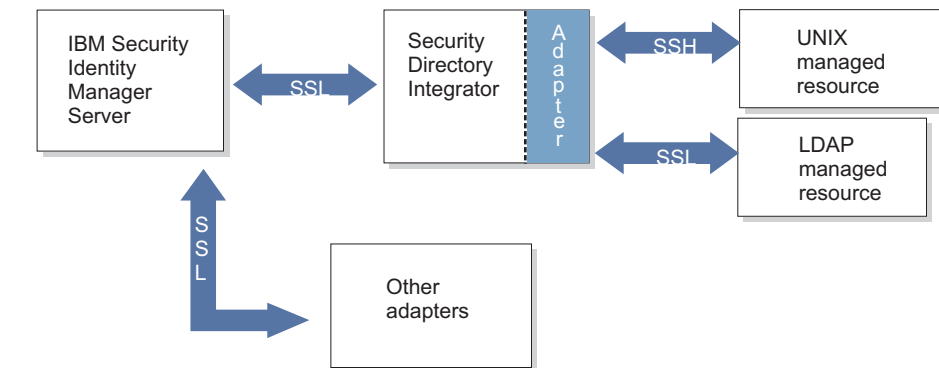
.pfx (PKCS12)

A PKCS12 file has an extension of `.pfx`. It contains a certificate (CA-issued certificate or self-signed certificate) and a corresponding private key. Use this format to transfer the contents of a keystore to a separate computer. For example, you can create and install a certificate and private key with the key management utility. You can then export them to a PKCS12 file and import the file into another keystore. This format is also useful for converting from one type of SSL implementation to a different implementation. For example, you can create and export a PKCS12 file with the IBM Key Management utility and then import the file on another computer with the **OpenSSL CertTool** utility.

Chapter 6. Securing of communication with adapters

The IBM Security Identity Manager Server uses either SSL or Secure Shell (SSH) communication to communicate securely with supported adapters.

Figure 3 illustrates how you can configure secure communication links.



KEY:

 = One-way or two-way SSL

 = Secure Shell protocol

Figure 3. Secure communication in the IBM Security Identity Manager environment

Managed resources can communicate with the IBM Security Identity Manager adapters with the following protocols:

SSL Configures adapters, such as Windows Server Active Directory or Lotus Notes®, to use SSL authentication to communicate with the IBM Security Identity Manager Server. Not all adapters use the same SSL configuration. For more information, see the installation and configuration guide for the specific adapter.

Secure Shell (SSH)

Is used between the adapter and managed resource. The SSH protocol requires no configuration. The use of SSH between the adapter and managed resources cannot be disabled. However, configuration of SSH might be required on the managed resource. For more information, see the IBM Security Identity Manager adapter installation and configuration guides for UNIX and Linux.

Chapter 7. Securing of communication with custom applications

If you develop custom applications to access the IBM Security Identity Manager Server, these applications must adhere to the programming guidelines described in this section.

These guidelines ensure that:

- Security boundaries built into the IBM Security Identity Manager Server are observed strictly.
- Only authorized application programming interfaces (APIs) are used for communication between the server and custom applications.
- Appropriate roles are assigned to users and user groups that use custom applications to access IBM Security Identity Manager functions.

IBM Security Identity Manager shields its core functions with a layer of managed enterprise Java beans (EJBs). These EJBs are in an unprivileged layer of the IBM Security Identity Manager, which is illustrated in Figure 4.

When the IBM Security Identity Manager communicates with a client application, every managed EJB method takes a signed token from the caller. The token verifies the caller identity, except when the method does the authentication. The caller obtains this signed token after authentication with the IBM Security Identity Manager Server.

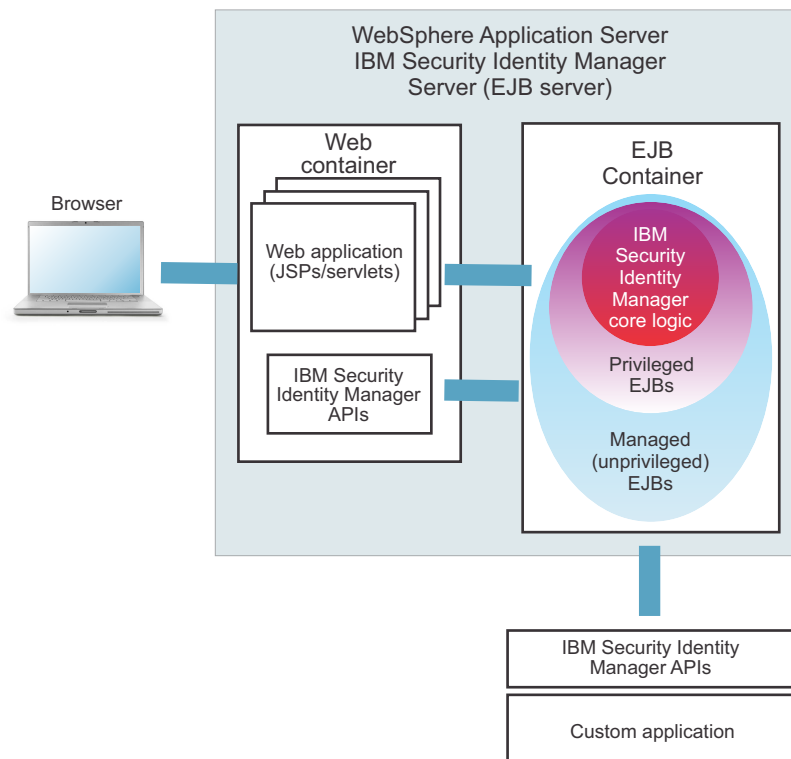


Figure 4. Security layers in IBM Security Identity Manager Server

The following types of custom applications can be created to communicate with the IBM Security Identity Manager Server:

Stand-alone Java client

Deployed as a WebSphere Application Server thin client.

Web application

Deployed outside of WebSphere Application Server. A web application can start only a specific subset of IBM Security Identity Manager Server APIs.

Enterprise application, same Java virtual machine (JVM)

Deployed in the same server instance (enrole.ear) as the IBM Security Identity Manager Server .

Enterprise application, separate JVM

Deployed on the same computer as the IBM Security Identity Manager Server, but runs as a separate JVM process.

Servlets

Deployed on a separate computer that runs WebSphere Application Server. Servlets are not deployed in the context of a web application.

When you develop custom applications to communicate with the IBM Security Identity Manager Server, use the following rules to ensure secure communication:

- Allow only published APIs to access the managed EJBs in the unprivileged area.
- Allow custom applications to use only the functions that the APIs provide.
- Ensure that the computer on which the IBM Security Identity Manager Server runs is always secure.

WebSphere Application Server uses roles to manage access to application components and other objects, including user and group names. Use the following guidelines for assigning roles in custom applications that interface with IBM Security Identity Manager Server.

ITIM_SYSTEM

This role is defined when the IBM Security Identity Manager Server is deployed into WebSphere Application Server. **ITIM_SYSTEM** is used by IBM Security Identity Manager Server components. It is authorized to call all EJB methods in both privileged and unprivileged layers. Do not assign any principal names or user IDs to this role without prior consultation with an IBM representative.

ITIM_CLIENT

This role is authorized to call only managed EJB methods in the unprivileged layer. Map to this role the users, and user group names, and other principals that perform less restricted tasks in the IBM Security Identity Manager Server.

Chapter 8. Secure communication with supported middleware

The IBM Security Identity Manager Server uses SSL for secure communication with supported middleware, such as a directory server.

Your configuration might be similar to the cluster configuration example in Figure 5.

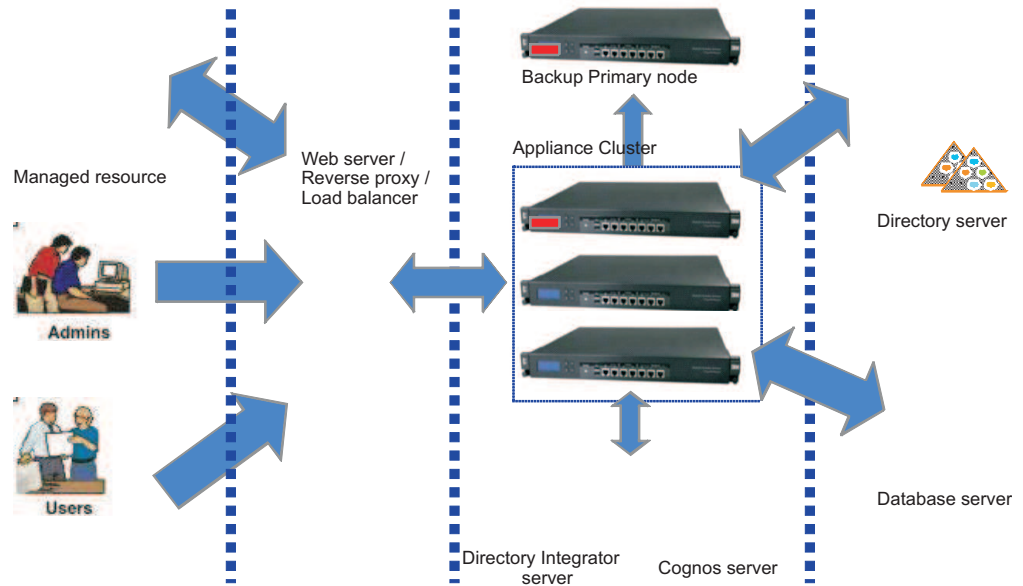


Figure 5. Initial cluster configuration

After initial installation, you might configure secure communication links between IBM Security Identity Manager Server and these applications:

- Database server
- Directory server
- HTTP server
- Web browser
- Other supported middleware

Example SSL configurations

Example SSL configurations include secure communication between IBM Security Identity Manager Server and the directory server and between an HTTP server and a web browser.

In Table 2 on page 18, the first application is the SSL client, and the second application is the SSL server:

Table 2. Example SSL configurations

SSL client	SSL server	One-way SSL	Two-way SSL
IBM Security Identity Manager Server	LDAP directory server	✓	
HTTP server (IBM HTTP Server)	IBM Security Identity Manager Server	✓	✓
Web browser	IBM Security Identity Manager Server	✓	

Your site might require additional configuration for SSL authentication with the IBM Security Identity Manager Server.

Preparation for SSL configuration

Before you configure SSL for secure communication, install and configure IBM Security Identity Manager Server. Then, locate IBM Global Security Kit (**GSKit**) to generate certificates.

Complete these tasks:

1. Install and configure the IBM Security Identity Manager Server and required supported middleware, including the directory server. This example assumes that a cluster configuration exists and that the directory server is on a separate computer.
2. Ensure that the initial configuration is running correctly. For more information, see *IBM Security Identity Manager Configuration Guide*.
3. Locate the IBM Global Security Kit (**GSKit**), which is included in the IBM Security Directory Server that the initial configuration installs. For example, locate the `/path/local/ibm/gsk7/bin` directory on the computer that has the Security Directory Server, where `path` is a value such as `usr`.

The **GSKit** package provides the iKeyman key management utility, `gsk7ikm`. Use the utility to create key databases, public-private key pairs, and certificate requests. The following steps assume that you use the iKeyman utility to create self-signed certificates for secure communication. Alternatively, you can use the WebSphere Application Server administrative console to create a self-signed certificate.

A self-signed digital certificate is a temporary digital certificate that you issue to yourself with yourself as the certificate authority (CA). When you complete testing, replace the self-signed certificate with a certificate signed by a CA certificate from a well-known certificate authority.

Creating a certificate

Use the iKeyman utility to create a self-signed certificate and extract the certificate to make it available for secure communication.

Before you begin

Depending on how your system administrator customized your system, you might not have access to this task. To obtain access to this task or to have someone complete it for you, contact your system administrator.

About this task

The iKeyman utility is in the IBM Security Directory Server.

Procedure

1. Start the iKeyman utility. For example, type the `gsk7ikm` command in the `/usr/local/ibm/gsk7/bin` directory
2. If the iKeyman utility cannot locate Java, run this command: **export JAVA_HOME=opt/IBM/ldapv6.1/java/jre**
3. On the IBM Key Management page, select **Key Database File > Open > New**.
4. Select a default database type of CMS.
5. In the **File Name** field, type a name for the CMS key database file. For example, type: `LDAPSERVER_TEST1234.kbd`
For example, the value specifies `application_serverhostname` where `application` is the directory server, and `serverhostname` is the computer that has the directory server.
6. In the Location field, specify a location to store the key database file. For example, type `/certs`.
7. Click **OK**.
8. On the Password menu:
 - a. Type and then confirm a password, such as `Pa$$word1`.
 - b. Specify the highest password strength possible.
 - c. Specify **Stash the password to a file?**
 - d. Click **OK**.
9. Select **Create > New Self Signed Certificate** and specify a label that matches the CMS key database file name, such as `LDAPSERVER_TEST1234`.
This example uses the same name (`LDAPSERVER_TEST1234`) for both the certificate name and the key database file that contains the certificate.
10. Type `IBM` in the **Organization** field, accept the remaining field default values, and click **OK**. A self-signed certificate, including public and private keys, now exists.
11. For subsequent use with clients, extract the contents of the certificate into an ASCII Base-64 Encoded file. Complete these steps:
 - a. Select **Extract Certificate**.
 - b. Specify a data type of Binary DER Data.
A file with an extension of `.der` contains binary data. This format can be used only for a single certificate. Specify this format to extract a self-signed certificate.
 - c. Specify the name of the certificate file name you created, such as `LDAPSERVER_TEST1234.der`.
 - d. Specify a location, such as `/certs`, in which you previously stored the key database file
 - e. Click **OK**.
12. Verify that the `/certs` directory contains the following files:

Table 3. Files in the `/certs` directory

File	Description
<code>LDAPSERVER_TEST1234.crl</code>	Not used in this example.
<code>LDAPSERVER_TEST1234.der</code>	The certificate.

Table 3. Files in the /certs directory (continued)

File	Description
LDAPSERVER_TEST1234.kbd	Key database file that has the certificate.
LDAPSERVER_TEST1234.rdb	Not used in this example.
LDAPSERVER_TEST1234.sth	Stash file that has the password

Note: If you use an existing or newly acquired certificate from a CA, copy it to the /certs directory on root file system of the directory server.

Alternatively, you can use the WebSphere Application Server administrative console to create a self-signed certificate:

- a. Select **Security > SSL certificate and key management > Manage endpoint security configurations > {Inbound | Outbound} > ssl_configuration > Key stores and certificates > [keystore]**. From Additional Properties, click **Personal certificates**.
- b. Click **Create a self-signed certificate**

What to do next

For more information, see:

- Topics on securing directory communications in the *IBM Security Directory Server Administration Guide* at <http://www.ibm.com/support/knowledgecenter/SSVJJU/welcome>
- *IBM Global Security Kit Secure Sockets Layer Introduction and iKeyman User's Guide* at http://www.ibm.com/support/knowledgecenter/SSPREK_6.1.1/com.ibm.itame.doc_6.1.1/ss7cumst.htm?cp=SSPREK_6.1.1%2F0-3-5

Configuring SSL for the database server

Configure the database server to use SSL for secure communications.

About this task

To use SSL for secure communications, select the **SSL** check box in the Database Server Configuration Details window from the Database Server Configuration page of the **Appliance Dashboard**. For more information, see Managing the database server configuration.

Configuring SSL for the directory server

Use an LDIF file to configure SSL on the directory server and to specify a secure port.

Before you begin

Depending on how your system administrator customized your system, you might not have access to this task. To obtain access to this task or to have someone complete it for you, contact your system administrator.

Procedure

1. If the directory server is not running, start the server. For example, on UNIX, type this command:

```
/opt/IBM/ldap/V6.1/sbin/ibmslapd -I itimldap
```

Where *-I* specifies the instance.

2. Create an LDIF file, such as `ssl.ldif`, with the following data:

```
dn: cn=SSL,cn=Configuration
changetype: modify
replace: ibm-slapdSslAuth
ibm-slapdSslAuth: serverauth
-
replace: ibm-slapdSecurity
ibm-slapdSecurity: sslonly
-
replace: ibm-slapdSslKeyDatabase
ibm-slapdSslKeyDatabase: /certs/LDAPSERVER_TEST1234.kdb
```

Note: The empty lines that contain only the - (hyphen) character are required for LDIF file formatting.

To change the secured port from the default port number 636, add these additional lines:

```
replace: ibm-slapdSecurePort
ibm-slapdSecurePort: 637
```

3. Place the LDIF file in the following directory:

```
/opt/IBM/ldap/V6.1/bin
```

4. Run the `idsldapmodify` command, which modifies the password policy by adding the LDIF file to the process.

```
idsldapmodify -D cn=root -w passwd -i ssl.ldif
```

-D Binds to the LDAP directory, which is `cn=root` in this example.

-w Uses the `passwd` value, which is the directory server administrator password, as the password for authentication.

-i Reads the entry modification information from an LDIF file instead of from standard input. In this example, the file is named `ssl.ldif`.

A successful result produces a message similar to the following one:

```
Operation 0 modifying entry cn=SSL,cn=Configuration
```

5. Test the directory server to confirm that it is listening on the default secure port 636. Follow these steps:

- a. Stop the directory server. Type `/opt/IBM/ldap/V6.1/sbin/ibmslapd -k:`

- b. Start the directory server. Type `/opt/IBM/ldap/V6.1/sbin/ibmslapd -I itimldap`.

Where **-I** specifies the instance.

- c. Determine whether the directory server is listening on port 636. For example, display statistics for the network interface with the directory server by typing `netstat -an |grep 636`.

A return message that indicates the port is listening might be this example:

```
tcp    0    0 9.42.62.72:636 0.0.0.0:* LISTEN
```

Configuring SSL on the application server

Set up the application server to enable SSL communication between IBM Security Identity Manager and the directory server.

Before you begin

Depending on how your system administrator customized your system, you might not have access to this task. To obtain access to this task or to have someone complete it for you, contact your system administrator.

About this task

The topic guides you through the configuration of SSL by using the default cacerts file that is provided by the Java SDK. Take note that this cacerts file is likely to be overwritten each time the Java SDK is upgraded or a fix pack is applied. To save your settings, backup the cacerts file before you upgrade the Java SDK and then restore the file after upgrade is completed. Otherwise, you can store the certificates in a different keystore file that is not the default cacerts file.

Procedure

1. Log on to the IBM Security Identity Manager virtual appliance console.
2. From the top-level menu of the **Appliance Dashboard**, click **Configure > Advanced Configuration > Application Server Certificate Management** to display the Application Server SSL Certificate page. The Application Server SSL Certificate page displays the certificate details.
3. Click **Update** to open the Upload Keystore window.
4. Click **Browse** to search and select the certificate that you want to import. The **File** field is populated with the certificate name. For example, appserver.jks.
5. Type the password for the certificate in the **Keystore Password** field.
6. From the **Keystore Type** list, select a type that specifies the keystore.
 - CMSKS
 - JCEKS
 - JKS
 - PKCS11
 - PKCS12
7. Click **Save Configuration**.

Note: The application server SSL certificate configuration takes some time. Do not refresh or close the page. Wait for the configuration process to complete.

Configuring the IBM Security Identity Manager Server

Configure the IBM Security Identity Manager server to communicate with the computer and port on which the directory server listens for secure communication.

Before you begin

Depending on how your system administrator customized your system, you might not have access to this task. To obtain access to this task or to have someone complete it for you, contact your system administrator.

Procedure

1. On the computer that has the Security Identity Manager Server, edit the *java.naming.provider.url* property that specifies the LDAP connection.
2. Log on to the IBM Security Identity Manager virtual appliance console.

3. From the top-level menu of the **Appliance Dashboard**, select **Configure > Advanced Configuration > Update Property** to display the Update Property page.
4. In the Update Property page, do these steps.
 - a. In the **All properties** tab, click **Identity server property files**.
 - b. Click **New** to add the property name as `enRoleLDAPConnection.properties` and the property value as `java.naming.provider.url`. For more information, see Managing the server properties.
 - c. From the **Server Control** widget on the **Appliance Dashboard**, select **Cluster Manager server** and click **Stop**.
 - d. From the **Server Control** widget on the **Appliance Dashboard**, select **Cluster Manager server** and click **Start**.

Testing SSL communication between servers

Test the SSL communication between IBM Security Identity Manager Server and IBM Security Directory Server.

Before you begin

Depending on how your system administrator customized your system, you might not have access to this task. To obtain access to this task or to have someone complete it for you, contact your system administrator.

Procedure

1. Test that the Security Directory Server is listening. In the `$TDS_INSTALL_HOME/bin` directory on the computer where Security Directory Server is installed, type the following command on one line. For example:

```
ldapsearch -b dc=com -K /certs/LDAPSERVER_TEST1234.kdb
-p 636 -s base "objectclass=*"

```

`LDAPSERVER_TEST1234.kdb` is the name of the key database.

The result has entries for the top-level schema similar to the following entries:

```
dc=com
objectclass=top
objectclass=domain
dc=com

```

2. Log on to the IBM Security Identity Manager virtual appliance console.
3. From the top-level menu of the **Appliance Dashboard**, click **Configure > Manage External Entities > Directory Server Configuration**.
4. Click **Configure**.
5. In the Directory Server configuration details window, specify the expected variable values. For more information, see Managing the directory server configuration.
6. Select the **SSL** check box to manage the secure connection.
7. Click **Save Configuration**.
8. To confirm that secure communication is configured, log in with your user ID and password to the IBM Security Identity Manager Server.

A successful login indicates that you configured SSL communication between the IBM Security Identity Manager Server and the directory server.

9. If your login does not succeed, an error message on the login screen indicates that the directory server is not available. After you analyze the LDAP configuration log and the IBM Security Identity Manager Server log, try the configuration steps again.

Additionally, you might determine whether:

- Statements were correctly added to the `ldapConfig.lax` file.
- Required spaces were entered in the `ldapConfig.lax` file.
- The path to the truststore file is valid.
- The truststore file is corrupted.

Configuration of the HTTP server for additional security and performance

For additional security and better performance, configure an HTTP server, such as the IBM HTTP Server, on a stand-alone computer that is external to any other IBM Security Identity Manager component.

By default, SSL is set to **off** in the IBM HTTP Server. To enable SSL, you must specify SSL directives (properties) in the `httpd.conf` server configuration file. A configuration that provides additional security and performance is similar to Figure 7 on page 25

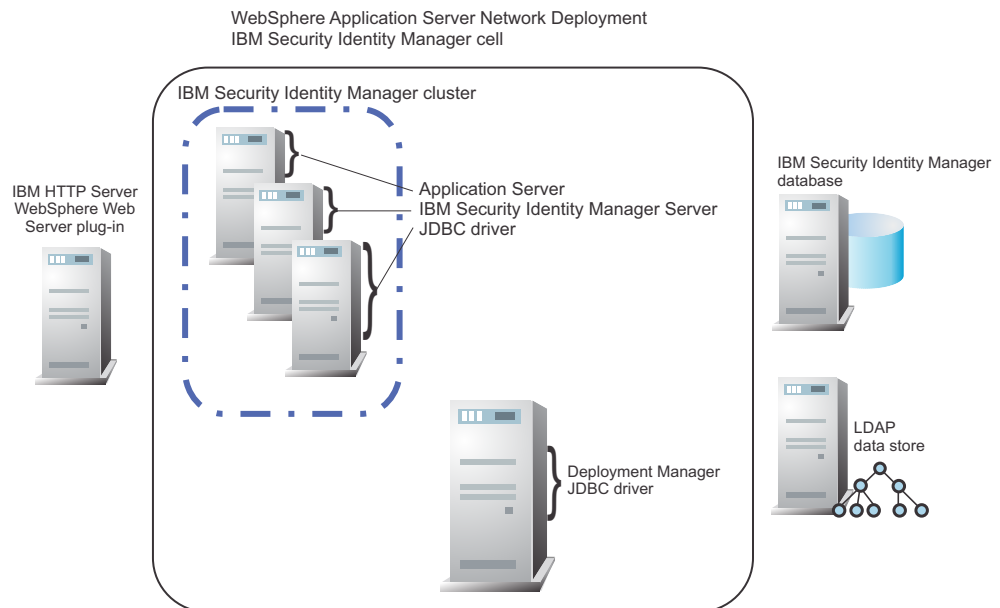


Figure 6. HTTP server configuration for increased security

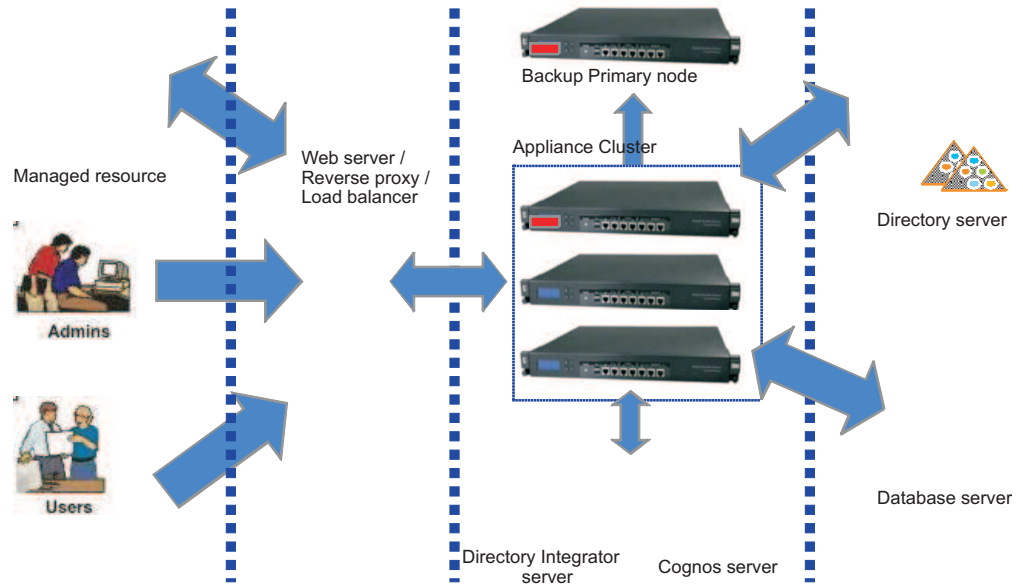


Figure 7. Configuration of HTTP server for increased security

SSL for the IBM HTTP server and Application server plug-in

The external IBM HTTP Server forwards HTTP requests that are sent to it to the internal HTTP transport of the Application server web container through the Application server plug-in.

To secure this communication, you must enable SSL for the IBM HTTP Server and configure the Application server plug-in to communicate securely with the Application server web container.

Configuring SSL for the IBM HTTP server

To configure the use of SSL, you must specify SSL directives (properties) in the `httpd.conf` file in the IBM HTTP Server. By default, SSL is set to off in the IBM HTTP Server.

Before you begin

Depending on how your system administrator customized your system, you might not have access to this task. To obtain access to this task or to have someone complete it for you, contact your system administrator.

See the configuration information in the "Securing with SSL Communications" topic in the "Securing IBM HTTP Server" section at http://www.ibm.com/support/knowledgecenter/SSAW57/mapfiles/product_welcome_wasnd.html.

For enhanced security, do not use RC4 ciphers. Use the strongest cipher suites that the browser and web server support. To set specific ciphers, see the "Setting advanced SSL options" section at http://www.ibm.com/support/knowledgecenter/SSAW57/mapfiles/product_welcome_wasnd.html.

About this task

To enable SSL on the IBM HTTP Server, use the configuration information to complete these steps:

Procedure

1. Use the IBM HTTP Server iKeyman utility graphical user interface or command line to create a CMS key database file and self-signed server certificate.
2. Enable SSL directives in the `httpd.conf` configuration file for the IBM HTTP Server.

- a. Uncomment the `LoadModule ibm_ssl_module modules/mod_ibm_ssl.so` configuration directive.
- b. Create an SSL virtual host stanza in the `httpd.conf` file by using the following examples and directives:

```
LoadModule ibm_ssl_module modules/mod_ibm_ssl.so
<IfModule mod_ibm_ssl.c>
  Listen 443
  <VirtualHost *:443>
    SSLEnable
  </VirtualHost>
</IfModule>
SSLDisable
KeyFile "c:/Program Files/IBM HTTP Server/key.kdb"
```

Note: On Windows platforms:

- The load module name is `LoadModule ibm_ssl_module modules/mod_ibm_ssl.dll`.
 - Always specify the address with the port on the `Listen` directive. To add the `Listen` directive in `httpd.conf` by using the default address `0.0.0.0` to listen on IPv4 port 443, type `Listen 0.0.0.0:443`.
3. Stop and start the IBM HTTP Server.
 4. Test the configuration with a browser in an HTTPS session to the IBM HTTP Server (`https://ihs_host`).

Configuring SSL for the plug-in

After you enable the IBM HTTP Server for SSL, configure the WebSphere Application Server plug-in so that the IBM HTTP Server can communicate securely with the application servers. You must ensure that SSL was enabled for the WebSphere Application Server web container by pointing your browser to a URL such as `https://dm_host:9043/ibm/console`.

Before you begin

Depending on how your system administrator customized your system, you might not have access to this task. To obtain access to this task or to have someone complete it for you, contact your system administrator.

Set up the IBM HTTP server on a stand-alone computer that is external to any other IBM Security Identity Manager component. For more information, see the topic "Selecting a web server topology diagram and roadmap" on the following website:

http://www.ibm.com/support/knowledgecenter/SSAW57_7.0.0/as_ditamaps/welcome_nd.html

The installation and configuration of the plug-in registers the web server with the WebSphere Application Server deployment manager, and the IBM HTTP Server becomes a managed web server. You can manage a managed web server with the WebSphere Application Server administrative console.

About this task

The application server profile to which you point during the WebSphere Application Server plug-in installation and configuration is the deployment manager itself in this topology. It creates a key file called `plugin-key.kdb` in the `app_server_root/profiles/dm_profile/etc` directory. The `plugin-key.kdb` file contains the certificates of all federated application servers.

Push the key file to the managed web server so the plug-in can establish secure application with the application servers. For more information, see the topic "Configuring the Web server plug-in for Secure Sockets Layer" on the web site:

http://www.ibm.com/support/knowledgecenter/SSAW57_7.0.0/as_ditamaps/welcome_nd.html

Procedure

1. Create a directory on the web server host for storing the key ring file that is referenced by the plug-in and associated files. For example, create a `plugin_install_root/etc/keys` directory.
2. On the WebSphere Application Server administrative console, click **Servers > Web servers**.
3. Select the web server name.
4. Click **Plug-in properties**.
5. Click **Manage keys and certificates** to access configuration options for your keys and certificates. By default, you can change the password that protects the keystore.
6. Click **OK**.
7. Click the web server **keystores** button to copy the keystore and to stash files to a managed web server.

Chapter 9. Configuration of single sign-on

Single sign-on services provide a seamless experience for a user who accesses a number of applications in the enterprise.

You can enable single sign-on for the IBM Security Identity Manager administrative console, the Self-service console, and the Identity Service Center applications with IBM Security Access Manager.

After you configure single sign-on, a user logs on to IBM Security Access Manager web security one time. The identity of the user is propagated to IBM Security Identity Manager, which eliminates the need for another login.

This function requires IBM Security Access Manager to enable single sign-on with IBM Security Identity Manager.

1. IBM Security Access Manager provides user authentication and coarse-grained authorization before it allows access to IBM Security Identity Manager.
2. IBM Security Identity Manager then applies fine-grained access control with its own Access Control Item (ACI).

You can configure IBM Security Access Manager and IBM Security Identity Manager for single sign-on with either

- WebSEAL
- IBM Security Access Manager plug-in servers

Before you configure single sign-on with WebSEAL, you must install and configure IBM Security Access Manager and WebSEAL.

Configuration of IBM Security Identity Manager for single sign-on with Application server Trust Association Interceptor and IBM Security Access Manager WebSEAL

Trust Association Interceptor and WebSEAL authentication eliminates the need for a separate password to access IBM Security Identity Manager.

To configure single sign-on with Trust Association Interceptor and WebSEAL, complete the following steps:

1. Define how IBM Security Access Manager maps its accounts to IBM Security Identity Manager accounts during authentication.
2. Create a user in IBM Security Access Manager that WebSEAL can use to connect to the backend server.
3. Create a junction that points to the IBM Security Identity Manager server.
4. Define two IBM Security Access Manager ACLs to control access to IBM Security Identity Manager. Define one ACL for the IBM Security Identity Manager Administrator application. Define ACLs for the IBM Security Identity Manager Self Service application and the Identity Service Center application.
5. Configure the Trust Association Interceptor.
6. Configure IBM Security Identity Manager to use single sign-on.
7. Configure WebSEAL.

Account mapping

Single sign-on, account mapping occurs between IBM Security Access Manager and IBM Security Identity Manager during login authentication.

When a user accesses IBM Security Identity Manager with WebSEAL and single sign-on, the user must specify a IBM Security Access Manager user account and password. IBM Security Access Manager checks if the user is authorized to access IBM Security Identity Manager.

If the authentication and authorization are successful, the IBM Security Access Manager user account is passed in the `iv-user` HTTP request header to IBM Security Identity Manager. IBM Security Identity Manager passes the information in the HTTP request header to IBM Security Identity Manager for further processing. IBM Security Identity Manager uses the IBM Security Access Manager user account to find a matching user account in the IBM Security Identity Manager directory.

Typically, IBM Security Access Manager and IBM Security Identity Manager user accounts are identical. If they are identical, the IBM Security Identity Manager user can log in to IBM Security Identity Manager.

If they are not identical, you can configure IBM Security Identity Manager user account mapping. There are two configuration options. They are controlled by the `enrole.authentication.idsEqual` attribute in the `enRoleAuthentication.properties` file.

Do these steps:

1. Log on to the IBM Security Identity Manager virtual appliance console.
2. From the top-level menu of the **Appliance Dashboard**, select **Configure > Advanced Configuration > Update Property** to display the Update Property page.
3. In the **All properties** tab of the Update Property page, click **Identity server property files**.
4. Select `enRoleAuthentication.properties`.
5. Follow the steps that are described in Managing the server properties. View the following information for the configuration options.

enrole.authentication.idsEqual=true

No mapping is attempted. The IBM Security Access Manager user account passed in the `iv-user` HTTP request header must be identical to an IBM Security Identity Manager user account defined in the IBM Security Identity Manager directory for the user to log in to IBM Security Identity Manager.

If the policy in your installation is that all IBM Security Identity Manager user accounts must have matching IBM Security Access Manager user accounts, specify `enrole.authentication.idsEqual=true` to avoid the unnecessary mapping processing and overhead.

enrole.authentication.idsEqual=false

The IBM Security Access Manager user account passed in the `iv-user` HTTP request header searched the IBM Security Access Manager directory for a matching IBM Security Identity Manager user account:

- If an identical IBM Security Identity Manager is found, the user can log in to IBM Security Identity Manager.

- If an identical IBM Security Identity Manager account is not found, then IBM Security Identity Manager attempts to locate a matching IBM Security Identity Manager user account with the following mapping logic:

The IBM Security Access Manager user account in the `iv-user` HTTP request header searches the IBM Security Identity Manager directory for a IBM Security Access Manager user account.

If an identical IBM Security Access Manager user account is found in the IBM Security Identity Manager directory, it searches for the IBM Security Identity Manager Person entity that owns the IBM Security Access Manager user account. If an owning IBM Security Identity Manager Person entity cannot be located, the user cannot log in.

If the IBM Security Identity Manager Person entity that owns the matching IBM Security Access Manager user account is found, then a search is performed for an IBM Security Identity Manager user account owned by that entity. If an IBM Security Identity Manager user account owned by the IBM Security Identity Manager Person is found, then the user can log in to IBM Security Identity Manager with that IBM Security Identity Manager user account. Otherwise, the user cannot log in.

Changing the logoff page

IBM Security Identity Manager comes with different files that can be specified as the logoff page for its Console.

Before you begin

Depending on how your system administrator customized your system, you might not have access to this task. To obtain access to this task or to have someone complete it for you, contact your system administrator.

About this task

See the following table about Logout pages.

Table 4. Logoff pages

File name	Description
Webseal default	<p>This sample file is the most secure. Use it when you want the following combined behavior when the user clicks the Logoff button:</p> <ul style="list-style-type: none"> • o End the logon session. • o End the logon session; the pkmslogout function is started. <p>Note: The pkmslogout function works only for clients with an authentication mechanism that does not supply authentication data with each request. For example, pkmslogout does not work for clients that use Basic Authentication, certificates, or IP address information. In these cases, you must close the browser to log out. The pkmslogout function provides this information to the user in a message on the logout page.</p>

Table 4. Logoff pages (continued)

File name	Description
Single Sign-On default	<p>Use this sample file for the following combined behavior when the user clicks the Logoff button:</p> <ul style="list-style-type: none"> • End the current logon session and provide a link to return to IBM Security Identity Manager. • Remain logged in to IBM Security Access Manager; the <code>iv-user</code> HTTP header information is still available. For example, this action provides for continued use of a portal page or a return to IBM Security Identity Manager without a logon prompt.

Procedure

1. From the top-level menu of the **Appliance Dashboard**, click **Configure > Manage Server Setting > Single Sign-On Configuration**.
2. From the Single Sign-On Configuration page, change the log off page. The Logout page values are described in Table 4 on page 31.

Creating a user in IBM Security Access Manager that WebSEAL uses to connect to the backend server

You must create a IBM Security Access Manager user that is used to configure the single sign-on.

Before you begin

Depending on how your system administrator customized your system, you might not have access to this task. To obtain access to this task or to have someone complete it for you, contact your system administrator.

IBM Security Access Manager must be installed.

About this task

Use the `pdadmin` command to create a user in IBM Security Access Manager that can be used by WebSEAL. For this task, the user name is `ss0`. You can also use the web interface to create the user.

Perform this task on the server where IBM Security Access Manager is installed.

Procedure

1. Start the utility by typing `pdadmin` at a command prompt. The `pdadmin` command is located in the `/PolicyDirectory Installation path/bin` directory.
2. Log in to a secure domain as the `sec_master` administration user to use the utility.
 - a. At the command prompt, type `login`.
 - b. Type `sec_master` when prompted for a user ID.
 - c. Specify the associated password at the **Enter Password** prompt.

For example:

```
pdadmin> login
Enter User ID: sec_master
Enter Password: password
pdadmin>
```


3. To create the sso user, type the following command on one line at the command prompt.

```
pdadmin sec_master> user create sso cn=sso,cn=Users,secAuthority=Default  
sso sso password
```

sso Specifies the user name you want to create. In this case, the user is sso.

cn=sso,cn=Users,secAuthority=Default

Specifies the full LDAP distinguished name (DN).

password

Specifies the password for the user.

4. To make the user account valid, type this command

```
pdadmin sec_master> user modify sso account-valid yes
```

Defining IBM Security Access Manager Accounts

For users that access IBM Security Identity Manager, you must define IBM Security Access Manager user accounts in addition to Security Identity Manager user accounts.

Before you begin

Depending on how your system administrator customized your system, you might not have access to this task. To obtain access to this task or to have someone complete it for you, contact your system administrator.

About this task

Use Security Identity Manager to provision the IBM Security Access Manager user accounts.

This example defines myaccount as an identical user account for both applications. Use identical user accounts for both the IBM Security Access Manager and IBM Security Identity Manager. Otherwise, you must configure the user account mapping.

Procedure

1. On the computer on which IBM Security Access Manager is installed, start the IBM Security Access Manager utility. Type `pdadmin` at a command prompt. This prompt can be on the IBM Security Access Manager Authorization Server or the IBM Security Access Manager Policy Server. You can also use IBM Security Identity Manager to provision IBM Security Access Manager user accounts.
2. Take the following steps:
 - a. Log in to a secure domain as the `sec_master` administration user to use the utility.
 - b. At the command prompt, type `login`.
 - c. Type `sec_master` when prompted for a user ID.
 - d. Specify the associated password at the **Enter Password** prompt.

For example:

```
pdadmin> login  
Enter User ID: sec_master  
Enter Password: password  
pdadmin>
```

3. Define the example myaccount user account on IBM Security Access Manager with the **user create** command.

```
user create [-gsouser][no-password-policy] user_name dn cn sn password [groups]
```

Where:

-gsouser

Enables global sign-on.

-no-password-policy

Enables the administrator to create the user with an initial password that is not checked by the existing global password policies.

user_name

Specifies the name of the user.

dn

Specifies the registry identifier assigned to the user you want to create. The format for a distinguished name is like:

```
cn=Mary Jones,ou=Austin,o=IBM,c=us
```

cn

Specifies the common name assigned to the user you want to create. For example, Mary.

sn

Specifies the family name of the user. For example, Jones.

password

Specifies the new user account password.

groups

Specifies a list of groups to which the new user is assigned.

For example, type:

```
user create "myaccount" "cn=FirstName LastName,o=ibm,c=us"
"FirstName LastName" "LastName" password
```

4. To make the user account valid, type `user modify "myaccount" account-valid yes`.

Defining IBM Security Access Manager groups

Use the `pdadmin` utility to define two IBM Security Access Manager groups.

Before you begin

Depending on how your system administrator customized your system, you might not have access to this task. To obtain access to this task or to have someone complete it for you, contact your system administrator.

About this task

Create a group for the users who need access to the following IBM® Security Identity Manager user interfaces:

- Administrative console.
- Self-service user interface.
- Identity Service Center.

Procedure

1. Create a group `ITIM-Group` for users who need administrative access, by typing the following command:

```
group create ITIM-Group cn=ITIM-Group,o=ibm,c=us ITIM-Group
```
2. Create a group `ITIM-Self-Service-Group` for users who need self-service access, by typing the following command:

```
group create ITIM-Self-Service-Group cn=ITIM-Self-Service-Group,o=ibm,c=us
ITIM-Self-Service-Group
```

3. Create a group ITIM-ISC-Group for users who need Identity Service Center access, by typing the following command:

```
group create ITIM-ISC-Group cn=ITIM-ISC-Group,o=ibm,c=us
ITIM-ISC-Group
```

Adding IBM Security Access Manager user account to a group

You must add IBM Security Access Manager user accounts to IBM Security Access Manager groups.

Before you begin

Depending on how your system administrator customized your system, you might not have access to this task. To obtain access to this task or to have someone complete it for you, contact your system administrator.

Procedure

1. Add user account myaccount to the group ITIM-Group by typing this command:

```
group modify ITIM-Group add "myaccount"
```

2. Add the IBM Security Access Manager user account myaccount to the group ITIM-Self-Service-Group by typing the following command:

```
group modify ITIM-Self-Service-Group add "myaccount"
```

3. Add the IBM Security Access Manager user account myaccount to the group ITIM-ISC-Group by typing the following command:

```
group modify ITIM-ISC-Group add "myaccount"
```

What to do next

Use IBM Security Identity Manager to provision.

Defining a junction that points to IBM Security Identity Manager Server

Create a WebSEAL junction that points to the IBM Security Identity Manager Server with the **pdadmin** utility.

Before you begin

Depending on how your system administrator customized your system, you might not have access to this task. To obtain access to this task or to have someone complete it for you, contact your system administrator.

IBM Security Access Manager must be installed.

Procedure

1. Start the utility by typing **pdadmin** at a command line.
2. Log in to a secure domain as the **sec_master** administration user to use the utility.
 - a. At the command line, type the text as **login**.
 - b. Type the ID as **sec_master** when prompted for a user ID.
 - c. Specify the associated password at the **Enter Password** prompt.

For example:

```
pdadmin> login
Enter User ID: sec_master
Enter Password: password
pdadmin>
```

3. Locate the name of the WebSEAL server to create the junction. To determine the name of the WebSEAL server that is defined in IBM Security Access Manager, issue the `server list` command. The information that is returned contains the name in the following format:

webseald-server_hostname

where *server_hostname* is the WebSEAL server name.

Note: If you install multiple WebSEAL server instances on the same workstation, the name format is *server_instancename-webseald-server_hostname*. For example:

```
pdadmin sec_master> server list
amwpm-tam60-server
ivacld-tam60-server
default-webseald-tam60-server
pdadmin sec_master>
```

4. Issue the `server task create` command to create the junction. The command format is as follows.

```
server task webseal_server_name create options /junction_name
```

webseal_server_name

Name of the WebSEAL server.

options

The following options are needed:

-b supply

Defines how the WebSEAL server passes the HTTP BA authentication information to the backend server.

-c iv-creds

Specify a value *client_identity_options*, such as `iv-creds` to instruct WebSEAL to insert the `iv-creds` HTTP header variable.

-e utf8_uri

Specifies the encoding to use when it generates HTTP headers for junctions. This encoding applies to headers that are generated with both the `-c` junction option and tag-value. The value `utf8_uri` specifies that WebSEAL sends the headers in UTF-8 but that URI also encodes them. This behavior is the default behavior.

-h hostname

Specify the fully qualified host name of the IBM Security Identity Manager Server.

-j

Supplies junction identification in a cookie to handle script-generated server-relative URLs. This option is valid for all junctions except for the type of `local`.

-s

Specifies that the junction supports stateful applications. By default, junctions are not stateful. This option is valid for all junctions except for the type of `local`.

-p port_number

Specify the port number for the IBM Security Identity Manager Server.

-t tcp Defines the type of junction type.

-x Creates a transparent path junction. This option is valid for all junctions except for the type of local.

junction_name

Specify a name for the junction point. Each junction point must have a unique name.

For example, to define a TCP junction, type the following command on one line:

```
server task default-webseald-tam60-server create -b supply -t tcp -s -x  
-e utf8_uri -c iv_creds -p 9080 -h ITIMServer.ondemandinc.com /itim/ui
```

5. Create two junctions, one for Identity Service Center and the other for IBM Security Identity Manager REST.

See the example in Step 4 on page 36.

- The junction name for Identity Service Center REST must be `/itim/ui` as shown in the example of Step 4 on page 36.
- The junction name for IBM Security Identity Manager REST must be `/itim/rest`.

Defining IBM Security Access Manager ACLs

Use the **pdadmin** utility to define IBM Security Access Manager access control lists (ACLs) to these IBM Security Identity Manager interfaces: Administrative console, the Self-service console, and the Identity Service Center.

Before you begin

Depending on how your system administrator customized your system, you might not have access to this task. To obtain access to this task or to have someone complete it for you, contact your system administrator.

Procedure

1. Start the utility by typing `pdadmin` at a command prompt.
2. Create an ACL requiring authenticated access to associate with the WebSEAL junction.

Use the `acl create acl_name` command, where *acl_name* is the name of the ACL being created.

For example, for administrative console access, type the following command:

```
pdadmin> acl create ITIM-ACL
```

For self-service access, type the following command:

```
pdadmin> acl create ITIM-Self-Help-ACL
```

For Identity Service Center access, type the following command:

```
pdadmin> acl create ITIM-ISC-ACL
```

Granting access to the IBM Security Access Manager ACLs

Grant IBM Security Access Manager groups access to their corresponding IBM Security Access Manager access control lists (ACLs).

Before you begin

Depending on how your system administrator customized your system, you might not have access to this task. To obtain access to this task or to have someone complete it for you, contact your system administrator.

About this task

For the administrator group (ITIM-Group), self-service group (ITIM-Self-Service-Group), and Identity Service Center group (ITIM-ISC-Group), complete these steps:

Procedure

1. Add groups to the ACL with the `acl modify acl_name set group group_name permissions` command. For example, add the administrator group to its corresponding ACL:

```
pdadmin> acl modify ITIM-ACL set group ITIM-Group Trx
```

where:

acl_name

Specifies the name of the ACL groups you want to add.

group_name

Specifies the name of the group you want to add.

permissions

Specifies one or more of the following permissions:

T Specifies traverse subdirectories.

r Specifies read.

x Specifies execute.

2. To allow unauthenticated users to only Traverse the directory, modify the ACL:

```
acl modify ITIM-ACL set any-other T
```

3. To modify the ACL to allow users who are not authenticated to only Traverse the directory, type this command:

```
acl modify ITIM-ACL set unauthenticated T
```

4. To modify the corresponding ACL to allow ITIM-Self-Service-Group the authority to Traverse directories and to also read and execute, type this command:

```
acl modify ITIM-Self-Help-ACL set group ITIM-Self-Service-Group Trx
```

5. To modify ITIM-Self-Help-ACL to allow unauthenticated users to only Traverse the directory, type this command:

```
acl modify ITIM-Self-Help-ACL set any-other T
```

6. To modify ITIM-Self-Help-ACL to allow users who are not authenticated to only Traverse the directory, type this command:

```
acl modify ITIM-Self-Help-ACL set unauthenticated T
```

7. To modify the corresponding ACL to allow ITIM-ISC-Group the authority to Traverse directories and to also read and execute, type this command:

```
acl modify ITIM-ISC-ACL set group ITIM-ISC-Group Trx
```

8. To modify ITIM-ISC-ACL to allow unauthenticated users to only Traverse the directory, type this command:

```
acl modify ITIM-ISC-ACL set any-other T
```

- To modify ITIM-ISC-ACL to allow users who are not authenticated to only Traverse the directory, type this command:

```
acl modify ITIM-ISC-ACL set unauthenticated T
```

Associating the WebSEAL junction to the ACLs

Use the `padmin` utility to associate the WebSEAL junction with a URL path prefix to the corresponding IBM Security Access Manager access control list (ACL).

Before you begin

Depending on how your system administrator customized your system, you might not have access to this task. To obtain access to this task or to have someone complete it for you, contact your system administrator.

Procedure

Associate the ACL with the `attach junction_name acl_name` command. The command syntax is:

```
acl attach prefix/webseal_junction/url_path_prefix acl_name
```

where:

prefix Specifies the IBM Security Access Manager Object Space prefix for your WebSEAL server.

Type the following command to see the prefix:

```
padmin> object list /WebSEAL  
/WebSEAL/tam60-server-default
```

In this example, the value of the prefix is `/WebSEAL/tam60-server-default`.

webseal_junction

Specifies the name of the WebSEAL junction that you created previously with the server task `create` command. In this example, the WebSEAL junction name is `/itimserver`. The fully qualified WebSEAL junction name is `/WebSEAL/tam60-server-default/itimserver`.

url_path_prefix

Specifies the name of the URL path prefix for the IBM Security Identity Manager administrative console (`itim/console`), or the self-service console (`itim/self`), or Identity Service Center (`itim/ui`).

acl_name

Specifies the name of the corresponding IBM Security Access Manager ACL (ITIM-ACL or ITIM-Self-Help-ACL).

For example, associate the fully qualified WebSEAL junction name `/WebSEAL/tam60-server-default/itimserver/itim/console` to:

- The IBM Security Identity Manager administrator console access to the IBM Security Access Manager ACL ITIM-ACL.

```
acl attach /WebSEAL/tam60-server-default/itimserver/itim/console ITIM-ACL
```
- The IBM Security Identity Manager self-service console access to the IBM Security Access Manager ACL ITIM-Self-Help-ACL.

```
acl attach /WebSEAL/tam60-server-default/itimserver/itim/self ITIM-Self-Help-ACL
```
- The IBM Security Identity Manager Identity Service Center access to the IBM Security Access Manager ACL ITIM-ISC-ACL.

```
acl attach /WebSEAL/tam60-server-default/itimserver/itim/ui ITIM-ISC-ACL
```

Configuring IBM Security Identity Manager to use single sign-on

Change the `ui.properties` file to configure IBM Security Identity Manager to use single sign-on.

Before you begin

Depending on how your system administrator customized your system, you might not have access to this task. To obtain access to this task or to have someone complete it for you, contact your system administrator.

Procedure

1. From the top-level menu of the **Appliance Dashboard**, select **Configure > Advanced Configuration > Update Property** to display the Update Property page.
2. In the **All properties** tab, click **Identity server property files**.
3. Select `ui.properties`.
4. Select the `enrole.ui.taiEnabled` property name.
5. Click **Edit**.
6. Set the **Property Value** to `true`.
7. From the **Server Control** widget on the **Appliance Dashboard**, do these steps.
 - a. Select these servers and click **Stop**.
 - **Cluster Manager server**
 - **Identity Manager server**
 - b. Select these servers and click **Start**.
 - **Cluster Manager server**
 - **Identity Manager server**

What to do next

Configure WebSEAL.

Configuring WebSEAL

Configure WebSEAL to use the password of the IBM Security Access Manager user that is created in the first task of this procedure.

Before you begin

IBM Security Access Manager must be installed.

Depending on how your system administrator customized your system, you might not have access to this task. To obtain access to this task or to have someone complete it for you, contact your system administrator.

This task configures WebSEAL to use form-based authentication. Form-based authentication ends the IBM Security Access Manager session when the user logs out. For more information about the topic, see the IBM Security Access Manager product documentation website at <http://www.ibm.com/support/knowledgecenter/SS9JLE/welcome>.

Procedure

1. On the WebSEAL server, locate the `webseald-default.conf` file. This file is in the WebSEAL installation directory.
2. Find the entry `basicauth-dummy-passwd`.
3. Replace `dummypasswd` with the password you specified for the user that is created in the first task of the procedure.
4. Configure WebSEAL to use form-base authentication. Ensure that these values are set in the WebSEAL configuration file.
 - `ba-auth=none`
 - `forms-auth=https`
5. Save your changes.
6. Restart the WebSEAL server.

What to do next

Log on to IBM Security Identity Manager Server with any defined IBM Security Access Manager user ID.

Note:

1. You are logging in through the WebSEAL junction URI and not directly in to IBM Security Identity Manager Server.
2. If you use basic authentication, you must close the browser when you log off to end the current session.

IBM Security Identity Manager web services in a single sign-on environment

The single sign-on (SSO) application in the IBM Security Identity Manager installed example directory, achieves single sign-on by using the IBM Security Identity Manager web services.

The SSO application fetches the Lightweight Third Party Authentication (LTPA) token from the Hypertext Transfer Protocol (HTTP) header. The LTPA token serves as an identity token for using and maintaining the authenticated user information. The token enables the user to access the resources without requiring to log in to the IBM WebSphere Application Server again. The SSO application inserts this token into the SOAP header and then makes a web service call.

IBM Security Identity Manager installation configures **ISIMSecurityDomain** as its security domain that scopes to the IBM WebSphere Application Server where the IBM Security Identity Manager is deployed. Any application that runs on the same WebSphere Application Server uses the **ISIMSecurityDomain**. Any application that runs on a separate WebSphere Application Server runs under a separate domain and the user security realm must be configured as trusted realm in **ISIMSecurityDomain**.

The SSO application uses form-based login when it is not accessed from a WebSEAL junction. IBM Security Identity Manager users can log in to the sample application by using the same credentials as the IBM Security Identity Manager account. The SSO application runs on the same WebSphere Application Server and uses the **ISIMSecurityDomain**. When deployed in a separate server than IBM Security Identity Manager, the SSO application must be configured to share the IBM Security Identity Manager user registry. Upon successful authentication, the

SSO application receives an LTPA cookie in the response header from the WebSphere Application Server. The sample application extracts the **LtpaToken2** cookie from the Hypertext Transfer Protocol (HTTP) header and sets it in the session. The **WebServiceCall** servlet starts the **getPrincipalPerson** web service API.

When the SSO application is accessed from a WebSEAL junction, the TAI (Trust Association Interceptor) prevents WebSphere security from requiring multiple authentications. IBM Security Identity Manager users can log in to the sample application by using the credentials from the WebSEAL authentication server. Because the SSO application is deployed with the same **ISIMSecurityDomain** in the same WebSphere Application Server, the SSO application can log in to IBM Security Identity Manager seamlessly with the LTPA token from WebSEAL. When run on a separate WebSphere Application Server, the SSO application must run under a separate domain and the user security realm must be configured as a trusted realm in the **ISIMSecurityDomain**.

The SSO application demonstrates that you can achieve SSO authentication with the IBM Security Identity Manager web services in various deployment scenarios by using the **WS-Security** header. Modify the SOAP message to add the **WS-Security** header **BinarySecurityToken**. The **BinarySecurityToken** element has the LTPA identity token embedded. Provide the **WS-Security** header with the actor attribute, `http://services.itim.com/60/actor`, to enable the IBM Security Identity Manager web services for processing the security header. Modify the SOAP message with the outgoing request of the **ClientHandler**.

Installing on a system where the IBM Security Identity Manager is installed

You must install the single sign-on application by using the IBM WebSphere Application Server administrative console.

Before you begin

Familiarize yourself with the SSO application details and installation requirements before you install it.

You must install the IBM WebSphere Application Server fixes that are specified in the IBM Security Identity Manager Release Notes. Use the installation instructions in the Release Notes to install the fixes. Install the SSO application on the IBM WebSphere Application Server where the IBM Security Identity Manager is installed.

About this task

When you install the SSO application on the same system where IBM Security Identity Manager is installed, SSO authentication uses the IBM Security Identity Manager web services. The WebSphere Application Server returns an LTPA token when you authenticate with the WebSphere Application Server.

Procedure

1. Build the SSO application to create the `itim_ws.war` file. For information about building the application, see “Building the SSO application” on page 47.
2. Install the application by using the IBM WebSphere Application Server administrative console.

- a. Log on to the IBM WebSphere Application Server administrative console. For example, `http://localhost:9060/ibm/console`
 - b. Click **Applications > New Applications > New Enterprise Application**.
 - c. In the **Path to the new application** area, select **Local file system**.
 - d. Click **Browse** to set **Full path** to the location of the `itim_ws.war` file.
 - e. Click **Next**.
 - f. In the **How do you want to install the application** area, select **Detailed - Show all installation options and parameters**.
 - g. Click **Next**.
 - h. At the Application Security Warnings window, click **Continue**.
 - i. Click the **Map context roots for Web modules** step and specify the context root value as `/itim_ws`.
 - j. Click **Map security roles to users or groups** step. Select the `ITIM_CLIENT` role
 - k. Click **Map Special Subjects > All Authenticated in Trusted Realms**.
 - l. Click **Next** repeatedly until the Summary window is displayed.
 - m. Click **Finish**.
 - n. Click **Save** to save your changes directly to the master configuration.
3. Update the class loader properties
 - a. Click **Applications > Application Types > WebSphere enterprise applications**.
 - b. Click `itim_ws.war`.
 - c. Under **Detailed Properties**, click **Class loading and update detection**.
 - d. Select **Classes loaded with local class loader first (parent last)** for the **Class loader order** and **Single class loader for application** for the **WAR class loader policy**.
 - e. Click **OK**.
 - f. Click **Save** to save your changes directly to the master configuration.

What to do next

The SSO application works only with its own authentication by using the IBM Security Identity Manager user registry. You must enable authentication with WebSEAL.

Enabling authentication with WebSEAL

Enabling authentication with WebSEAL eliminates the need for a separate password to access IBM Security Identity Manager.

Procedure

1. Follow the instructions in “Configuration of IBM Security Identity Manager for single sign-on with Application server Trust Association Interceptor and IBM Security Access Manager WebSEAL” on page 29 Use the following modifications for web services.
2. Create an ACL that requires authenticated access to associate with the WebSEAL junction. For example,


```
pdadmin> acl create SSOAPP-ACL
```
3. Grant access to the ACL. For example,

```
pdadmin> acl modify SSOAPP-ACL set group ITIM-Group Trx
acl modify SSOAPP-ACL set any-other T
acl modify SSOAPP-ACL set unauthenticated T
```

4. Create the junction between WebSEAL and the back-end WebSphere server. If you are installing the SSO application on an IBM Security Identity Manager cluster, the LTPA token must be enabled at the WebSEAL junction. To enable the LTPA token at the junction to the SSO application, you must provide the following information.

- The location of the key file that is used to encrypt the identity information.
- The password to this key file.

Web services configuration requirements are specified in three extra options to the **server task create** command that is used to create the junction.

-A Enables the LTPA cookies.

-F keyfile

Specifies the full path name location on the WebSEAL server of the key file that is used to encrypt the identity information that is contained in the cookie. The shared key is originally created on the WebSphere server and copied securely to the WebSEAL server. See the appropriate WebSphere documentation for specific details about this task.

-Z keyfile-password

Specifies the password that is needed to open the key file. The password appears as encrypted text in the junction XML file.

Use these options and the other junction options when you create the junction between WebSEAL and the back-end WebSphere server. For example,

```
server task default-webseald-tam60-server create -b supply -t tcp -s -j
-e utf8_uri -c iv-creds -A -F "/abc/xyz/key.file" -Z "abcdefg" -p 9080
-h ITIMServer.ondemandinc.com/isimserver
```

5. Associate the WebSEAL junction to the ACLs. For example,

```
acl attach /WebSEAL/tam60-server-default/itimserver/itim_ws SSOAPP-ACL
```

Installing on a separate system than where the IBM Security Identity Manager is installed

You must install the single sign-on application by using the IBM WebSphere Application Server administrative console.

Before you begin

Familiarize yourself with the SSO application details and installation requirements before you install it.

You must install the IBM WebSphere Application Server fixes that are specified in the IBM Security Identity Manager Release Notes. Use the installation instructions in the Release Notes to install the fixes. Install the SSO application on the IBM WebSphere Application Server where the IBM Security Identity Manager is installed.

About this task

When the SSO application is installed on a separate system, the IBM Security Access Manager is positioned as a single sign-on front. It returns an LTPA token from the WebSphere Application Server or the IBM Security Access Manager depending on if the junction has LTPA enabled.

Procedure

1. Prepare the WebSphere Application Server environment. See “Preparing the WebSphere Application Server” on page 48
2. Build the SSO application to create the `itim_ws.war` file. For information about building the application, see “Building the SSO application” on page 47.
3. Use File Transfer Protocol (FTP) to copy the `itim_ws.war` file to the location in the system where the SSO application is going to be deployed.
4. Install the application by using the IBM WebSphere Application Server administrative console.
 - a. Log on to the IBM WebSphere Application Server administrative console. For example, `http://localhost:9060/ibm/console`
 - b. Click **Applications > New Applications > New Enterprise Application**.
 - c. In the **Path to the new application** area, select **Local file system**.
 - d. Click **Browse** to set **Full path** to the location of the `itim_ws.war` file.
 - e. Click **Next**.
 - f. In the **How do you want to install the application** area, select **Detailed - Show all installation options and parameters**.
 - g. Click **Next**.
 - h. At the Application Security Warnings window, click **Continue**.
 - i. Click the **Map context roots for Web modules** step and specify the context root value as `/itim_ws`.
 - j. Click **Map security roles to users or groups** step. Select the **ITIM_CLIENT** role
 - k. Click **Map Special Subjects > All Authenticated in Trusted Realms**.
 - l. Click **Next** repeatedly until the Summary window is displayed.
 - m. Click **Finish**.
 - n. Click **Save** to save your changes directly to the master configuration.
5. Update the class loader properties
 - a. Click **Applications > Application Types > WebSphere enterprise applications**.
 - b. Click `itim_ws.war`.
 - c. Under **Detailed Properties**, click **Class loading and update detection**.
 - d. Select **Classes loaded with local class loader first (parent last)** for the **Class loader order** and **Single class loader for application** for the **WAR class loader policy**.
 - e. Click **OK**.
 - f. Click **Save** to save your changes directly to the master configuration.
6. Ensure that you properly export and import the LTPA keys for correct encryption and decryption of the identity tokens (LTPA). See the IBM WebSphere Application Server documentation for setting up SSO by using LTPA with multiple servers.
7. Make the security realm that the sample SSO application is deployed a trusted realm of the IBM Security Identity Manager server. Perform the following steps on the WebSphere Application Server where IBM Security Identity Manager is installed.
 - a. Log on to the IBM WebSphere Application Server administrative console. For example, `http://localhost:9060/ibm/console`

- b. Click **Security > Security domains > ISIMSecurityDomain > User Realms:Customized - itimCustomRealm > Trusted authentication realms - inbound**.
- c. Click **Add External Realm** Type in the security realm of the SSO application. For example,


```
appCustomRealm
```
- d. In the *ISIM_HOME/data* directory, modify *thenRoleAuthentication.properties* file. Change *enrole.authentication.idmapper* to *com.ibm.itim.authentication.mapping.SSOIDMapper*.
- e. Restart the IBM Security Identity Manager server.

What to do next

The SSO application works only with its own authentication by using the IBM Security Identity Manager user registry. You must enable authentication with WebSEAL.

Enabling authentication on a separate system with WebSEAL

Enabling authentication with WebSEAL eliminates the need for a separate password to access IBM Security Identity Manager.

About this task

Procedure

1. Follow the instructions in “Configuration of IBM Security Identity Manager for single sign-on with Application server Trust Association Interceptor and IBM Security Access Manager WebSEAL” on page 29 Use the following modifications for web services.
2. On the server where the SSO application is installed, configure a Trust Association Interceptor for the application security domain. For example,


```
APPSecurityDomain
```
3. Define a junction that points to the SSO application. For example,


```
server task default-webseald-tam60-server create -b supply -t tcp
      -s -j -e utf8_uri -c iv_creds -p 9080
      -h AppServer.ondemandinc.com /appserver
```
4. Create an ACL that requires authenticated access to associate with the WebSEAL junction. For example,


```
pdadmin> acl create SSOAPP-ACL
```
5. Grant access to the ACL. For example,


```
pdadmin> acl modify SSOAPP-ACL set group ITIM-Group Trx
      acl modify SSOAPP-ACL set any-other T
      acl modify SSOAPP-ACL set unauthenticated T
```
6. Associate the WebSEAL junction to the ACLs. For example,


```
acl attach /WebSEAL/tam60-server-default/itimserver/itim_ws SSOAPP-ACL
```

Starting the SSO application

To use single sign-on, you must start the SSO application.

About this task

Perform these steps on the WebSphere Application Server where the SSO application is installed.

Procedure

1. Log on to the WebSphere Application Server administrative console. For example,
`http://localhost:9060/ibm/console`
2. Click **Applications > Enterprise Applications**.
3. If `itim_ws_war` is not already started, then select the `itim_ws_war` check box.
4. Click **Start**.

Testing the SSO application

After you start the SSO application, you can access the Webservices Call page to test whether single sign-on is working.

Procedure

1. Use one of the following URLs to access the SSO application with a web browser.
 - Use the URL `http://hostname:9080/itim_ws/jsp/Home.jsp`
 - If you enabled SSL, use the URL `https://hostname:9443/itim_ws/jsp/Home.jsp`
 - If you configured WebSEAL to authenticate, use the URL `https://WebSEAL Proxy/junction name/itim_ws/jsp/Home.jsp`.

The *hostname* is the name of the host where the SSO application is installed.

2. Display the Webservices Call page.
 - a. Log in to IBM Security Identity Manager.
 - b. Specify the server host and port on which the IBM Security Identity Manager web services are deployed.

WS Host

The host name or IP address of the server on which the IBM Security Identity Manager is deployed.

WS Port

The server port on which the IBM Security Identity Manager web services are available. For example, 9080.

3. Click **Get Principal User** to invoke the web service to fetch information about the logged in user.

Building the SSO application

You can create the `itim_ws.war` file by using the build scripts in the `/examples` directory.

Before you begin

Before you compile the examples, the `WAS_HOME` environment variable must be set to the WebSphere Application Server home directory.

About this task

To build only the SSO application, specify `sso_sample` as the target when you build the examples. For example, when you issue the `build sso_sample` command on Windows operating systems, or the `./build.sh sso_sample` command on UNIX operating systems, it creates the `itim_ws.war` file.

You must re-create the `itim_ws.war` file if you change the source of the SSO application.

Procedure

1. Log in as a user in the IBM Security Identity Manager.
2. Open a command prompt.
3. Change directories to `ITIM_HOME/extensions/RELEASE_VERSION/examples`.
4. Compile the source code. Type one of the following commands
 - On Windows operating systems
`build`
 - On UNIX operating systems
`build.sh`

The command compiles the Java classes into the following files.

- `ITIM_HOME/extensions/RELEASE_VERSION/lib/examples.jar`
- `ITIM_HOME/extensions/RELEASE_VERSION/examples/self_care/itim_expi.war`
- `ITIM_HOME/extensions/RELEASE_VERSION/examples/selfregistration/sr.war`
- `ITIM_HOME/extensions/RELEASE_VERSION/examples/ws/SSOSample/itim_ws.war`

What to do next

Some examples require that the `examples.jar` file is available on the classpath of the application server. See “Adding the `examples.jar` file to the class path”

Adding the `examples.jar` file to the class path

Some examples require that the example code is run within IBM Security Identity Manager. To run the code, the `ITIM_HOME/extensions/RELEASE_VERSION/lib/examples.jar` must be added to the class path of the application server.

About this task

Procedure

1. Stop the IBM Security Identity Manager application.
2. Add the `examples.jar` file to the **ITIM_LIB** WebSphere shared library.
 - a. Log in to the WebSphere administrative console.
 - b. Click **Environment > Shared Libraries**
 - c. Click **ITIM_LIB**.
 - d. Scroll down to the bottom of the list. Add the line `$ITIM_HOME/extensions/RELEASE_VERSION/lib/examples.jar`
 - e. Click **OK** and then click **Save**.
3. Start the IBM Security Identity Manager application for the changes to take effect.

Preparing the WebSphere Application Server

To install the single sign-on application on a separate system than where IBM Security Identity Manager is installed, you must modify the WebSphere environment on that system.

About this task

Procedure

1. Make sure that administrative security is enabled for the profile on which the SSO application is to be installed.
2. Create a folder that is named `classes`, if it does not exist, in `WAS_HOME/profiles/profile_name` folder on which SSO application is deployed.
Copy the `itim_server.jar`, `itim_common.jar`, and `jlog.jar` files from `ISIM_HOME/lib` to the `WAS_HOME/profiles/profile_name/classes` folder on the WebSphere Application Server client.
3. Copy the following property files from `ISIM_HOME/data` to the `WAS_HOME/profiles/profile_name/properties` folder on the WebSphere Application Server client.
 - `enRole.properties`
 - `enRoleAuthentication.properties`
 - `enRoleLDAPConnection.properties`
Specify the IBM Security Identity Manager LDAP server in the `url` **java.naming.provider.url** field. Use the IP address or machine name, such as `java.naming.provider.url=ldap://10.88.36.209:389`.
 - `Properties.properties`
 - `tmsMessages.properties`
4. Create a `data` folder in the `WAS_HOME/profiles/profile_name` folder on the WebSphere Application Server client.
5. Copy the `ISIM_HOME/data/keystore` folder to the `WAS_HOME/profiles/profile_name/data` folder on the WebSphere Application Server client.
6. Restart the WebSphere Application Server client/server.
7. Log in to the WebSphere Application Server client. On WebSphere administrative console, click **Global security > Security Domains > Copy Global Security**.
8. Enter the information for IBM Security Identity Manager Security Domain.
9. Click **OK** and save the changes to the master configuration.
10. Configure the security domain.
 - a. Go to **Security Domain > ISIMSecurityDomain**. Specify `server1` as the scope of the domain. Click **OK** and save the changes to the master configuration.
 - b. Go to **Security Domain > ISIMSecurityDomain > Security Attributes > Application Security**. Select the option **Customize** for this domain and check the checkbox **Enable Application Security**. Click **OK** and save the changes to master configuration.
 - c. Go to **Security Domain > ISIMSecurityDomain > User Realm**. Select **Standalone custom registry**.
 - d. Click **Configure**. Enter the realm name and custom registry class name. Select **Ignore case for authorization**.
 - e. Click **OK** and save the changes to master configuration.
11. Export and import the LTPA keys for the encryption and decryption of the identity tokens.
 - a. Export the LTPA key from the WebSphere Application Server, where IBM Security Identity Manager is installed.
 - 1) Go to **Global Security > LTPA**.

- 2) Specify a password in the **Password** and **Confirm password** fields.
 - 3) Specify the path and LTPA key file name in the **Fully qualified key file name** field.
 - 4) Click **Export keys**.
- b. Import the LTPA key on the WebSphere Application Server client, where SSO application is installed.
- 1) Go to **Global Security > LTPA**.
 - 2) Specify the password that was used in exporting the LTPA key in the **Password** and **Confirm password** fields.
 - 3) Copy the LTPA key file from the WebSphere Application Server to the WebSphere Application Server client. Specify the path of the LTPA key file on the WebSphere Application Server client in the **Fully qualified key file name** field.
 - 4) Click **Import keys**.
 - 5) Save the changes to the master configuration.

Accessing IBM Security Identity Manager consoles

After a junction exists between the WebSEAL server and the host for IBM Security Identity Manager, the URLs must include the junction name to access the Administrative console, the Self-service console, and the Identity Service Center.

Before you begin

Depending on how your system administrator customized your system, you might not have access to this task. To obtain access to this task or to have someone complete it for you, contact your system administrator.

About this task

Use the following syntax in each console address:

protocol://host_name/junction_name/url_path_prefix

protocol

Specifies the type of protocol that you want to use. Your choices are http or https.

host_name

Specifies the name of the computer on which the IBM Security Access Manager WebSEAL server is installed.

junction_name

Specifies the name of the WebSEAL junction.

url_path_prefix

- For the Administrative console, specify *itim/console*.

For example, type:

`http://TAM60-Server/ITIMServer/itim/console`

Or type:

`https://TAM60-Server/ITIMServer/itim/console`

- For the Self-service console, specify *itim/self*.

For example, type:

`http://TAM60-Server/ITIMServer/itim/self`

Or type:

`https://TAM60-Server/ITIMServer/itim/self`

- For the Identity Service Center, specify `itim/ui`.

For example, type:

`http://TAM60-Server/ITIMServer/itim/ui`

Or type:

`https://TAM60-Server/ITIMServer/itim/ui`

Frequently used commands to configure single sign-on

As an aid to configuring IBM Security Access Manager single sign-on for IBM Security Identity Manager, this section lists the most frequently used **pdadmin** commands. See IBM Security Access Manager documentation for the **pdadmin** command line.

Type each command in this example on one line.

Defining IBM Security Access Manager user accounts:

```
pdadmin -a sec_master -p password -m user delete -registry "itim manager"
pdadmin -a sec_master -p password -m user create "itim manager"
"cn=itim manager,o=ibm,c=us" "itim manager" "itim manager" tivoli
```

```
pdadmin -a sec_master -p password -m user modify "itim manager"
account-valid yes
pdadmin -a sec_master -p password -m user show "itim manager"
```

```
pdadmin -a sec_master -p password -m user delete -registry "myname"
pdadmin -a sec_master -p password -m user create "myname"
"cn=My Name,o=ibm,c=us" "My Name" "Name" tivoli
```

```
pdadmin -a sec_master -p password -m user modify "myname"
account-valid yes
pdadmin -a sec_master -p password -m user show "myname"
```

```
pdadmin -a sec_master -p password -m user delete -registry "teamleader"
pdadmin -a sec_master -p password -m user create "teamleader"
"cn=Team Leader,o=ibm,c=us" "Team Leader" "Leader" tivoli
```

```
pdadmin -a sec_master -p tivoli -m user modify "teamleader" account-valid yes
pdadmin -a sec_master -p tivoli -m user show "teamleader"
```

```
pdadmin -a sec_master -p password -m server task default-webseald-tam60-server
delete /itimserver
```

Defining a WebSEAL TCP or SSL Junction

```
pdadmin -a sec_master -p password -m server task default-webseald-tam60-server
create -t tcp -s -j -e utf8_uri -c iv_user -p 9080 -h ITIMServer /itimserver
```

```
pdadmin -a sec_master -p password -m server task default-webseald-tam60-server
create -t ssl -s -j -e utf8_uri -c iv_user -p 9443 -h ITIMServer /itimserver
```

```
pdadmin -a sec_master -p password -m server task
default-webseald-tam60-server show /itimserver
```

```
pdadmin -a sec_master -p password -m acl detach
/WebSEAL/tam60-server-default/itimserver/itim/console
```

Defining IBM Security Access Manager ACLs:

```
pdadmin -a sec_master -p password -m acl delete ITIM-ACL
pdadmin -a sec_master -p password -m acl create ITIM-ACL
pdadmin -a sec_master -p password -m acl detach
/WebSEAL/tam60-server-default/itimserver/itim/self
```

```
pdadmin -a sec_master -p password -m acl delete ITIM-Self-Help-ACL
pdadmin -a sec_master -p password -m acl create ITIM-Self-Help-ACL
pdadmin -a sec_master -p password -m acl detach
/WebSEAL/tam60-server-default/itimserver/itim/ui
```

```
pdadmin -a sec_master -p password -m acl delete ITIM-ISC-ACL
pdadmin -a sec_master -p password -m acl create ITIM-ISC-ACL
```

Defining IBM Security Access Manager groups:

```
pdadmin -a sec_master -p password -m group delete ITIM-Group -registry
pdadmin -a sec_master -p password -m group create
ITIM-Group cn=ITIM-Group,o=ibm,c=us ITIM-Group
```

```
pdadmin -a sec_master -p password -m group modify ITIM-Group
add "itim manager"
pdadmin -a sec_master -p password -m group show ITIM-Group
```

```
pdadmin -a sec_master -p password -m group
delete ITIM-Self-Service-Group -registry
pdadmin -a sec_master -p password -m group create ITIM-Self-Service-Group
cn=ITIM-Self-Service-Group,o=ibm,c=us ITIM-Self-Service-Group
pdadmin -a sec_master -p password -m group modify ITIM-Self-Service-Group
add "itim manager"
pdadmin -a sec_master -p password -m group modify ITIM-Self-Service-Group
add "myname"
pdadmin -a sec_master -p password -m group modify ITIM-Self-Service-Group
add "teamleader"
pdadmin -a sec_master -p password -m group show ITIM-Self-Service-Group
pdadmin -a sec_master -p password -m group
delete ITIM-ISC-Group -registry
pdadmin -a sec_master -p password -m group create ITIM-ISC-Group
cn=ITIM-ISC-Group,o=ibm,c=us ITIM-ISC-Group
pdadmin -a sec_master -p password -m group modify ITIM-ISC-Group
add "itim manager"
pdadmin -a sec_master -p password -m group modify ITIM-ISC-Group
add "myname"
pdadmin -a sec_master -p password -m group modify ITIM-ISC-Group
add "teamleader"
pdadmin -a sec_master -p password -m group show ITIM-ISC-Group
```

Associate the WebSEAL junction to the ACLs:

```
pdadmin -a sec_master -p password -m acl modify ITIM-ACL
set group ITIM-Group Trx
pdadmin -a sec_master -p password -m acl modify ITIM-ACL
set any-other T
pdadmin -a sec_master -p password -m acl modify ITIM-ACL
set unauthenticated T
pdadmin -a sec_master -p password -m acl show ITIM-ACL
```

```
pdadmin -a sec_master -p password -m acl modify ITIM-Self-Help-ACL
set group ITIM-Self-Service-Group Trx
```

```
pdadmin -a sec_master -p password -m acl modify ITIM-Self-Help-ACL
set any-other T
pdadmin -a sec_master -p password -m acl modify ITIM-Self-Help-ACL
set unauthenticated T
pdadmin -a sec_master -p password -m acl show ITIM-Self-Help-ACL
pdadmin -a sec_master -p password -m acl modify ITIM-ISC-ACL
set group ITIM-ISC-Group Trx
```

```
pdadmin -a sec_master -p password -m acl modify ITIM-ISC-ACL
```

```
set any-other T
pdadmin -a sec_master -p password -m acl modify ITIM-ISC-ACL
set unauthenticated T
pdadmin -a sec_master -p password -m acl show ITIM-ISC-ACL
pdadmin -a sec_master -p password -m acl attach
    /WebSEAL/tam60-server-default/itimsrver/itim/console ITIM-ACL

pdadmin -a sec_master -p password -m acl attach
    /WebSEAL/tam60-server-default/itimsrver/itim/self ITIM-Self-Help-ACL
pdadmin -a sec_master -p password -m acl attach
    /WebSEAL/tam60-server-default/itimsrver/itim/ui ITIM-ISC-ACL
```

Chapter 10. Security layer configuration around the data model and reports

An access to the data model and reports can be restricted to a set of authorization roles. The users can create the authorization roles and associate them with the reporting entities. Only entitled users can access the data model or reports.

Authentication and authorization for IBM Cognos reports

IBM Cognos Business Intelligence administrators can set up the folders that store the reports. They can then secure those folders so that only authorized users can view, change, or perform other tasks by using the reports in the folder. To set up access control on the reports, administrators can set up the user authentication and define the access control for the set of users.

User authentication setup by using LDAP

You can configure IBM Cognos 10.2.1 components to use an LDAP namespace for authentication when the users are in an LDAP user directory.

Configuring an LDAP Namespace for IBM Directory Server

If you configure a new LDAP namespace for use with the IBM Directory Server, you must modify the necessary settings and change the values for all properties of the IBM Directory objects.

Procedure

1. Open IBM Cognos Configuration.
2. In the Explorer window, under **Security**, right-click **Authentication**.
3. Click **New resource > Namespace**.
4. In the **Name** box, type a name for your authentication namespace.
5. In the **Type** list, click **LDAP-General default values**.
6. Click **OK**. The new authentication namespace resource appears in the Explorer window, under the **Authentication** component.
7. In the Properties window, for the **Namespace ID** property, specify a unique identifier for the namespace.

Tip: Do not use colons (:) in the Namespace ID property.

For **Host and Port**, specify <Hostname>:<port>. For example, localhost:389.

8. Specify the values for all other properties to ensure that IBM Cognos 10.2.1 can locate and use your existing authentication namespace.
 - For **Base Distinguished Name**, specify the entry for a user search.
 - For **User lookup**, specify (uid=\${userID}).
 - For **Bind user DN and password**, specify cn=root. For example, cn=root as a user name and secret as a password.

Note: Specify the values if you want an LDAP authentication provider to bind to the directory server by using a specific bind user DN and password. If no values are specified, an LDAP authentication namespace binds as anonymous.

9. If you do not use external identity mapping, use bind credentials to search an LDAP directory server. Complete the following items.
 - Set **Use external identity** to **False**.
 - Set **Use bind credentials for search** to **True**.
 - Specify the user ID and password for **Bind user DN and password**.
10. To configure an LDAP advanced mapping properties, see the values that are specified in the following table.

Table 5. LDAP advanced mapping values

Mappings	LDAP property	LDAP value
Folder	Object class	organizationalunit, organization, and container
	Description	description
	Name	ou, o, and cn
Group	Object class	groupofnames
	Description	description
	Member	member
	Name	cn
Account	Object class	inetorgperson
	Business phone	telephonenumber
	Content locale	(leave blank)
	Description	description
	Email	mail
	Fax/Phone	facsimiletelephonenumber
	Given name	givenname
	Home phone	homephone
	Mobile phone	mobile
	Name	cn
	Pager phone	pager
	Password	userPassword
	Postal address	postaladdress
	Product locale	(leave blank)
	Surname	sn
Username	uid	

If the schema is modified, you must make extra mapping changes.

11. To prevent the anonymous access, complete the following steps:
 - a. Go to **Security > Authentication > Cognos**.
 - b. Set **Allow anonymous access?** to **False**.
12. From the **File** menu, click **Save**.

Results

A new LDAP namespace is configured with the appropriate values.

What to do next

Create the users in an LDAP. See “Creating users in an LDAP” on page 57.

Creating users in an LDAP

See the example in this procedure that uses an LDAP utility to create users in LDAP.

Procedure

1. Open an LDAP utility. For example, if you are using the IBM Directory Server, the LDAP utility is `idsldapadd`.
2. Import the sample file `LdapEntries.ldif` that lists all the users who are authorized to access the reports. See the following example.

Results

After the successful import operation, you can see the users that are created in `ou=users,ou=SWG`.

Example

A sample file: `LdapEntries.ldif`

In this example, `dc=com` is the root entry. Specify the entry according to the schema that you use.

```
dn: ou=SWG, dc=com
ou: SWG
objectClass: top
objectClass: organizationalUnit
```

```
dn: ou=users,ou=SWG, dc=com
ou: users
objectClass: top
objectClass: organizationalUnit
```

```
dn: uid=steves,ou=users,ou=SWG, dc=com
uid: steves
userPassword:: hello123
objectClass: inetOrgPerson
objectClass: top
objectClass: person
objectClass: organizationalPerson
sn: Wiley
cn: Steves
```

```
dn: uid=PortalAdmin,ou=users,ou=SWG, dc=com
userPassword:: hello123
uid: PortalAdmin
objectClass: inetOrgPerson
objectClass: top
objectClass: person
objectClass: organizationalPerson
sn: Poon
cn: Chuck
```

```
dn: uid=william,ou=users,ou=SWG, dc=com
userPassword:: hello123
uid: william
objectClass: inetOrgPerson
objectClass: top
objectClass: person
objectClass: organizationalPerson
sn: Hanes
cn: William
```

```
dn: uid=lucy,ou=users,ou=SWG, dc=com
userPassword:: hello123
uid: lucy
objectClass: inetOrgPerson
objectClass: top
objectClass: person
objectClass: organizationalPerson
sn: Haye
cn: Lucy
```

What to do next

Authenticate IBM Cognos® by using an LDAP user. Complete these steps:

1. Access the IBM Cognos Gateway URI. For example, `http://localhost:portnumber/ibmcognos/cgi-bin/cognos.cgi`. The *localhost* is the IP address or network host name where IBM Cognos gateway is configured. The *portnumber* is the port on which the IBM Cognos gateway is configured.
2. Select the configured **Namespace**, and click **OK**.
3. Enter your LDAP user ID and password.
4. Click **OK**.

Access control definition for the reports and reporting packages

You can define the access control for the LDAP users who are the members of a role that is defined in the IBM Cognos namespace. Access can be granted to those users who are the members of a defined role.

A user who has the system administrator privileges can grant the access.

Initially, all users are the members of the system administrator. Therefore, you can log in with your LDAP user authentication in IBM Cognos and access the administration section before you restrict the administration access.

Restricting administration access and adding an LDAP user to system administrator role

You can restrict the IBM Cognos administration access by using the system administrators role in IBM Cognos namespace. You can also add an LDAP user to the system administrator role for IBM Cognos report administration.

Procedure

1. Log in to IBM Cognos with an LDAP user whom you want to assign the system administrator role.
2. Go to **Launch**, and click **IBM Cognos Administration**.
3. Click the **Security** tab.
4. In the **Users, Groups, and Roles** section, click **Cognos**.
5. Navigate to **System Administrator** role.
6. Click the **More** link.
7. Under **Available actions**, click **Set properties**.
8. Click the **Members** tab.
9. Click the **Add** link.
10. Under **Available entries** section, click an LDAP namespace.
11. Select the **Show users in the list** check box.

12. Select the user whom you want to assign the system administrator role and make it into selected entries list.
13. Click **OK**.
14. Select **Everyone** from the members entry.
15. Click the **Remove** link to ensure that only the added users can have the system administration access.
16. Click **OK**.
17. Click the **Permissions** tab.
18. Verify that the system administrators are listed and they are provided all the permissions. If no permissions are provided, then select the system administrators and grant all the permissions. Complete this step:
 - a. Select the **Override the access permissions acquired from the parent entry** check box to grant the permissions.
19. Click **OK**.

Results

An LDAP user is added with the system administrator role.

What to do next

Create a role and add LDAP users as the members to that role. See “Creating a role and adding LDAP users as members.”

Creating a role and adding LDAP users as members

The topic describes the procedure to create a role in IBM Cognos and add the members from an LDAP namespace to it.

Procedure

1. Log in to IBM Cognos with an LDAP user who has the system administrator privileges. For example, PortalAdmin.
2. Go to **Launch**, and click **IBM Cognos Administration**.
3. Click the **Security** tab.
4. In the **Users, Groups, and Roles** section, click **Cognos**.
5. Click the **New Role** icon from the palette.
6. Specify the name for a role. For example, ISIMAuditor.
7. Add the description and the screen tip.
8. Click **Next**.
9. Under **Select the members**, click **Add**.
10. Under **Available Entries Directory**, click an LDAP namespace.
11. Select the **Show users in the list** check box.
12. Select the users whom you want to add as the members to the role and make it into selected entries list.
13. Click **OK**.
14. Click **Finish**.

Results

A new role is created and LDAP users are added as the members to the new role.

Defining an access to the report by using a role

You can define an access to the report by using a role. All the members of a role can access the report or reports.

Procedure

1. Log in to IBM Cognos with an LDAP user who has the system administrator privileges. For example, PortalAdmin.
2. Under **Public Folders**, click **SAReportingmodel_6.0**.
3. Click the **More** link on the **Actions** toolbar that is associated with the report for which you want to provide the access.
4. Under **Available actions**, click **Set properties**.
5. Click the **Permissions** tab.
6. Select the **Override the access permissions acquired from the parent entry** check box.
7. Click **Add** link at the bottom of the list of entries.
8. Click **Cognos**.
9. Select the role that you want to add and make it to the selected entries.
10. Click **OK**.
11. Select the role and grant the permissions.
12. Optional: Remove other roles for which you do not want to provide the access.
13. Click **OK**.

Results

An access is defined to the report by using a role and all the members of a role can access the reports.

Defining an access to the reporting package by using a role

You can define an access to the report package by using a role. All the members of a role can access the report package.

Procedure

1. Log in to IBM Cognos with an LDAP user who has the system administrator privileges. For example, PortalAdmin.
2. Under **Public Folders**, click the **More** link on the **Actions** toolbar that is associated with the report package **SAReportingmodel_6.0**.
3. Under **Available actions**, click **Set properties**.
4. Click the **Permissions** tab.
5. Select the **Override the access permissions acquired from the parent entry** check box.
6. Click the **Add** link at the bottom of the list of entries.
7. Click **Cognos**.
8. Select the role that you want to add and make it to the selected entries.
9. Click **OK**.
10. Select the role and grant the permissions.
11. Optional: Remove other roles for which you do not want to provide the access.
12. Click **OK**.

Results

An access is defined for the reporting package by using a role and the members of a role can access the reporting package.

References for IBM Cognos report security configuration

Use the following references that provide information about the topics that are related to the security configuration for the IBM Cognos reports.

Access the IBM Cognos Business Intelligence 10.2.1 documentation at <http://pic.dhe.ibm.com/infocenter/cbi/v10r2m1/index.jsp> and search for the following terms.

- **Security model.**
- **Authentication providers.**
- **Add or remove members of a cognos group or role.**
- **Create a cognos group or role.**
- **Authorization.**
- **Access permissions and credentials.**

Index

A

- access
 - IBM Security Identity Manager consoles 50
- access control
 - reports 58
- access reports, defining 60
- account
 - define 33
 - mapping 30
- ACL 39
 - access 38
 - define 37
- adapter 13
- administrator
 - access restriction 58
- Application server 25
- Application server security 1
- authentication
 - IBM Cognos reports 55
- authorization
 - IBM Cognos reports 55

B

- backend server 32

C

- certificate 11
- class path
 - adding the examples.jar file 48
- clustered environment 9
- command
 - example 51
 - single sign-on 51
- communication 13, 15
 - configuration 17
- configure 29
 - database server 20
 - single sign-on 29
 - SSL 20
- custom application 15

D

- directory server 20

E

- examples.jar file 48
- external user registry 3

F

- file types 11
- form-based authentication 40

G

- group
 - define 34

H

- HTTP server 24

I

- IBM HTTP server 25
- IBM Security Identity Manager server
 - configure 22
- iKeyman utility 18

L

- LDAP
 - creating users 57
- LDAP namespace
 - configuration 55
- logoff page
 - Security Identity Manager Console changing 31

M

- members, adding 59
- middleware 17

P

- pdadmin 35
- pdadmin utility 37
- protocol 50

R

- references
 - security configuration 61
- report package
 - defining access 60
- reports
 - access control 58
 - define access 60
- roles
 - creating 59

S

- secure environment
 - practices 5
- security 24
- security configuration references 61
- security layer configuration 55
- self-signed certificate 18

- separate systems
 - single sign-on 49
- setup, user authentication 55
- single sign-on 40
 - enabling authentication with WebSEAL
 - same system 43
 - separate system 46
 - installing
 - same system 42
 - separate system 44
 - starting 46
 - testing 47
 - web services 41
 - WebSphere Application Server preparation 49
- SSL 9, 25, 26
 - configure 20
 - SSL authentication, one-way, two-way 8
 - SSL communication 7
 - SSL configuration
 - example 17
 - preparation 18
 - SSL implementation 9
 - SSL terminology 7
- SSL client 7
- SSL communication 22
 - test 23
- SSL server 7

T

- Trust Association Interceptor 29

U

- ui.properties 40
- user
 - create 32
- user account
 - add 35
- user authentication
 - setup 55
- user registry
 - Application server 3

W

- web services
 - enabling authentication with WebSEAL
 - same system 43
 - separate system 46
 - in a single sign-on environment 41
 - installing single sign-on
 - same system 42
 - separate system 44
 - single sign-on for separate systems 49

- web services (*continued*)
 - starting single sign-on 46
 - testing single sign-on 47
- WebSEAL 29, 32, 40
- WebSEAL junction 35
 - associate 39
- WebSphere Application Server
 - plug-in 26



Printed in USA