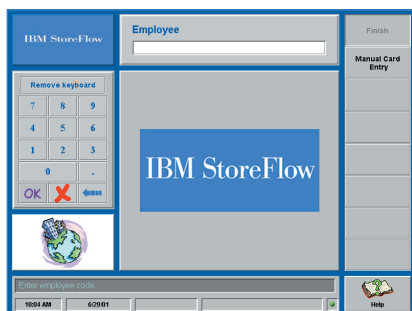


## IBM StoreFlow Version 1.5.2



### End-to-end store management

IBM StoreFlow™ Version 1.5.2 is an all-encompassing store management solution that connects the point-of-sale (POS) to back-office and enterprise-level systems. It includes a powerful POS application, an application server with database support, and a sales manager component – all working together in an open architecture that accommodates a wide range of platforms, databases, computing models and applications. With StoreFlow, you can achieve the seamless enterprise-wide integration you need to support multi-channel sales, loyalty programmes, multiple lines of business (LOBs) in a single store, and other e-business strategies.

### Take advantage of the Web at the POS

Choose the StoreFlow POS for Java application to bring the power of the Web to the POS. Provide access to e-commerce at checkout to increase your sales. Distribute new training materials online to maintain peak customer service. Or connect to supply chain partners to improve operational efficiency.

The StoreFlow POS application also processes transactions quickly to minimise customer wait-time. Offline operation allows uninterrupted selling – even if the server connection is lost. The EFT interface supports multiple authorisation providers, and a multi-level security system prevents theft. Plus, built-in loyalty programmes help you to reward your best customers.

### Post-to-host integration

StoreFlow provides access to information about customers, products, market trends and other critical factors from a single data repository. So, you can watch your operations moving in realtime and make faster, more-informed business decisions.

### Scalable deployment

StoreFlow accommodates any size store. It can scale from a speciality store with just one footprint all the way up to vast department stores with hundreds of terminals. Plus, StoreFlow features flexible functionality. It can easily meet the business needs of any size retailer – from a single shop owner to the largest merchandisers in the world.

### Highlights

- *Harness the power of Java® and the Web in thin- or thick-client environments*
- *Seamless post-to-host lets you drive decision-making with a single data repository*
- *StoreFlow scales from one to hundreds of terminals per store*
- *StoreFlow offers broad hardware and software compatibility, plus support for multi-national and global retailers*

### Broad hardware and software support

Supporting an array of platform and database products, StoreFlow is the gateway from the store to the enterprise. Use traditional POS platforms or new solutions, such as the IBM SurePOS™ 500 and 700 Series. Run the POS on the proven IBM 4690 OS or Microsoft®

Windows® 2000, while the application server runs on Windows 2000 or AIX®, and the sales manager workstation runs on Windows 2000. StoreFlow POS for Java is also ready for Linux. Database options include Microsoft SQL Server, Oracle® and Informix®.

### Proven global performance

StoreFlow is running successfully in hundreds of locations in Europe, Latin America, the Middle East and Africa. It has functionality for retailers operating anywhere in the world – including multiple languages and currencies – so global retailers can use it as a core solution worldwide.

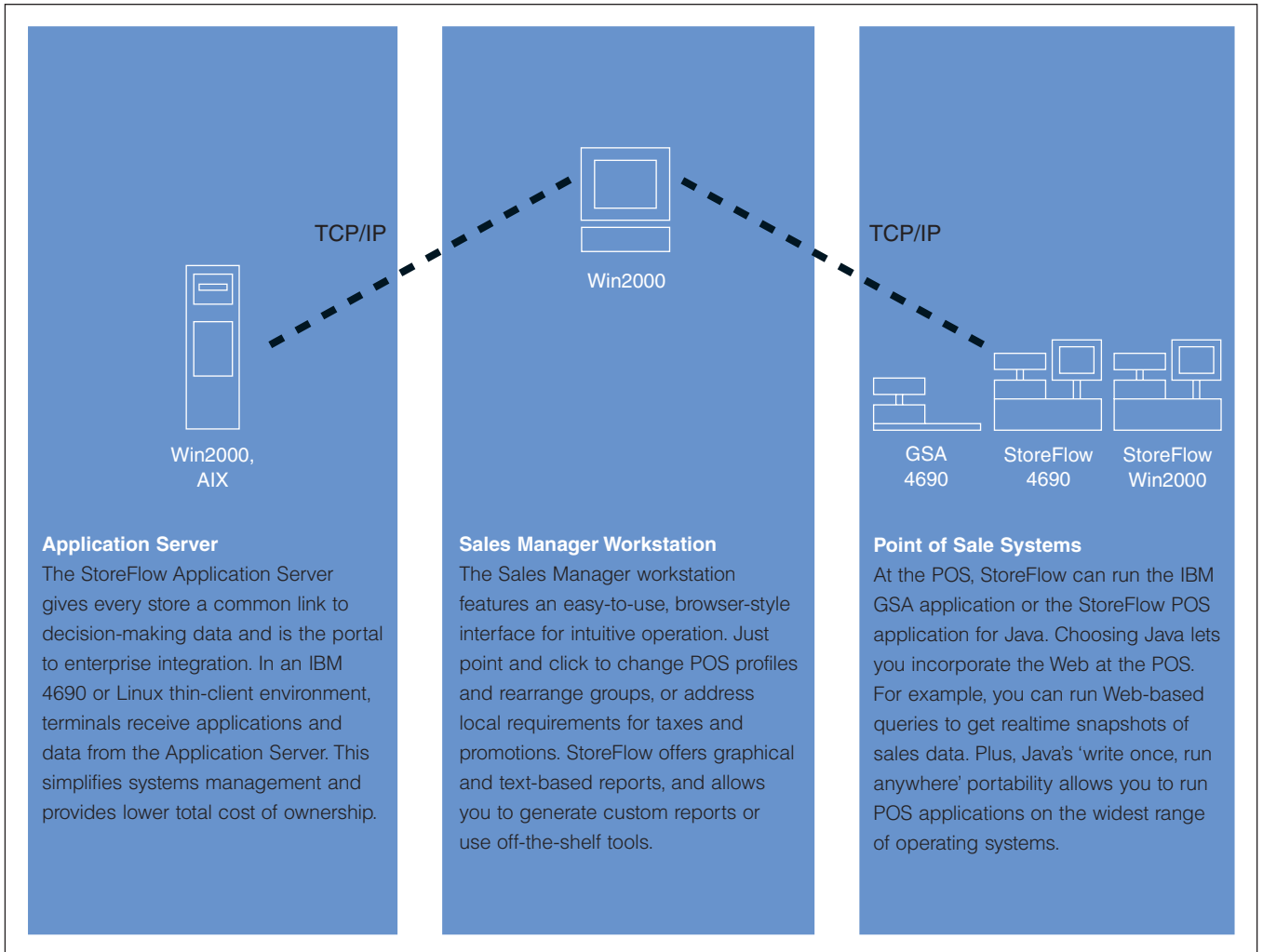


Figure 1: The IBM StoreFlow solution provides comprehensive integration from the POS to the back office to the enterprise level.

---

## IBM StoreFlow Version 1.5.2 at a glance

---

POS Application	POS for Java	POS for Windows	POS for DOS	Sales Manager Workstation	Application Server
<b>Hardware Supported<sup>1</sup></b>	<ul style="list-style-type: none"> <li>• IBM SurePOS 700 Series</li> <li>• IBM SurePOS 500 Series</li> <li>• IBM SurePOS 4694 Systems</li> <li>• Other compatible systems</li> </ul>	<ul style="list-style-type: none"> <li>• IBM SurePOS 700 Series</li> <li>• IBM SurePOS 500 Series</li> <li>• IBM SurePOS 4694 Systems</li> <li>• Other compatible systems</li> </ul>	<ul style="list-style-type: none"> <li>• IBM SurePOS 4694 Systems</li> <li>• Other compatible systems</li> </ul>	<ul style="list-style-type: none"> <li>• Windows 2000 capable machine (166 MHz Intel® Pentium® processor or higher)</li> <li>• Other compatible Windows 2000 professional systems</li> </ul>	<ul style="list-style-type: none"> <li>• IBM @server xSeries 200</li> <li>• IBM @server pSeries 640</li> <li>• Other compatible systems</li> </ul>
<b>Operating Systems Supported</b>	<ul style="list-style-type: none"> <li>• 4690 OS V2R4 (includes JRE 1.1.8)</li> <li>• Windows 2000 SP1 (requires JRE 1.1.8)</li> <li>• Linux compatible<sup>2</sup></li> </ul>	<ul style="list-style-type: none"> <li>• Windows 2000 SP1</li> </ul>	<ul style="list-style-type: none"> <li>• IBM PC DOS 2000 (V7R1)</li> </ul>	<ul style="list-style-type: none"> <li>• Windows 2000 SP1</li> </ul>	<ul style="list-style-type: none"> <li>• Windows 2000 SP1</li> <li>• AIX 4.3.3</li> </ul>
<b>Memory</b>	• 96 MB RAM	• 96 MB RAM	• 16 MB RAM	• 96 MB RAM	• 256 MB RAM
<b>Hard Drives Required</b>	• 2 GB (optional for 4690 OS)	• 2 GB	• 2 GB	• 2 GB	• 4 GB minimum (varies by store size)
<b>User Interface</b>	• Touch interface plus keyboard	• Touch interface plus keyboard	• Keyboard	• Keyboard	• Keyboard
<b>Databases Supported</b>					<ul style="list-style-type: none"> <li>• SQL Server 2000 for Windows 2000</li> <li>• Oracle 8i (release 8.1.6) for Windows 2000 or AIX</li> <li>• Informix Dynamic Server 2000 V9.21 for Windows 2000</li> </ul>

---

---

## StoreFlow POS for Java Application Highlights

---

<b>Web Interface</b>	Manage POS activity with a browser-style interface that enables e-commerce, integrates with the back-office and makes training easier.
<b>Sales Goals</b>	Motivate sales assistants with sales goals. Assign items sold to one or more assistants, and track progress towards targets online.
<b>Gift Card</b>	Grow revenue with a flexible gift card solution. Sell single- or multiple-use gift cards, check balances, and use gift cards as payment tender authorised online.
<b>Sends</b>	Supports shipments of goods to nominated addresses, with flexible options for shipment fees, taxes and send-label printing.
<b>Terminal Offline Support</b>	Enjoy the cost of ownership benefits of thin-client POS while protecting offline sales with a secure terminal offline capability.

---

---

## Sales Manager Workstation Highlights

---

<b>Special Offers and Promotions</b>	Launch special offers – such as percentage discounts, threshold pricing and special basket deals. Offer promotions with cash or gift rewards based on transaction value.
<b>Loyalty Programme Management</b>	Define, review and modify details of loyalty campaigns. Manage customer data. Report customer points totals. Review shoppers' claim history for points or rewards.
<b>Web Interface</b>	Manage StoreFlow through an intuitive, browser-style interface that is easy-to-use and lowers training costs.
<b>Item Management</b>	Update item prices, associate UPC/EAN codes with internal item codes, and associate shelf edge labels. Define velocity codes and tax rates, as well as department, family and item associations.
<b>Report Generator</b>	Choose from a wide range of standard reports, or use the simple report generation tool to customise reports for your specific needs.

---

<sup>1</sup> Must meet minimum hardware and software requirements

<sup>2</sup> POS hardware drivers are required for Linux support

### Find out more today

To learn more about how StoreFlow can help you increase sales, loyalty and efficiency, contact your IBM representative or find us on the Web at [ibm.com/industries/retail/store](http://ibm.com/industries/retail/store)



© Copyright IBM Corporation 2001  
IBM Corporation  
Department C6PA  
5601 Six Forks Road  
Raleigh, NC 27609

Printed in the United States of America  
08-01  
All Rights Reserved

References in this publication to IBM products or services do not imply that IBM intends to make them available in all countries in which IBM operates. Copying or downloading the images contained in this document is expressly prohibited without the written consent of IBM.

IBM will continue to enhance products and services as new technologies emerge. Therefore, IBM reserves the right to alter specifications and other product information without prior notice. Please contact your IBM marketing representative or an authorised reseller for information on specific standard configuration and options.

IBM assumes no responsibility of liability for any use of the information contained herein. Nothing in this document shall operate as an express or implied licence or indemnity under the intellectual property rights of IBM or third parties. No warranties of any kind including but not limited to the implied warranties of merchantability or fitness for a particular purpose are offered in this document.

AIX, the e-business logo, IBM, the IBM logo, pSeries, xSeries, StoreFlow and SurePOS are trademarks or registered trademarks of International Business Machines Corporation in the United States and/or other countries.

Java and all Java-based trademarks are trademarks of Sun Microsystems Corporation in the United States and/or other countries.

Intel and Pentium are registered trademarks of Intel Corporation in the United States and/or other countries.

Microsoft and Windows are registered trademarks of Microsoft Corporation in the United States and/or other countries.

Informix and Informix Dynamic Server are trademarks or registered trademarks of Informix Corporation in the United States and/or other countries.

Oracle and Oracle 8i are trademarks or registered trademarks of Oracle Corporation in the United States and/or other countries.

For a copy of the terms and conditions of IBM's Statement of Limited Warranty, please contact your IBM representative or authorised reseller.



Printed on recycled paper containing 10% recovered post-consumer fibre.