

IBM Rational Change for DOORS Interface

User's Guide

Release 5.7

Before using this information, be sure to read the general information under Appendix: “Notices” on page 51.

This edition applies to **5.7, IBM Rational Change for DOORS Interface (product number 5724V87)** and to all subsequent releases and modifications until otherwise indicated in new editions.

© **Copyright IBM Corporation 2002, 2009**

US Government Users Restricted Rights—Use, duplication or disclosure restricted by GSA ADP Schedule Contract with IBM Corp.

Table of Contents

Chapter 1: Introduction	1
Features	2
Benefits	2
Interface menus	3
Assumptions	4
Conventions	4
Typefaces and symbols	4
Contacting IBM Rational Software Support	5
Prerequisites	5
Submitting problems	5
Chapter 2: Managing Interface Packages	9
Installing packages	9
Removing packages	10
Chapter 3: Requirements Gathering	11
Defining attribute mapping	11
Obtaining Rational Change data	12
Obtaining requirements	12
Saving selected options	14
Loading saved options	14
Chapter 4: Requirements Change Management	15
Submitting requirements change requests	17
With system change request lifecycle	17
Without system change request lifecycle	17
Opening modules	18
Selecting default requirements change requests	19
Proposing changes to Rational DOORS documents	20
Entering change comments	21

Undoing changes	21
Unsaved changes.....	21
Saved changes.....	21
Rational DOORS Analyst Add On modules	21
Sending requirements change requests to review	22
Reviewing requirements change requests	23
Reviewing several requirements change requests simultaneously	25
Requirements Change Request report	27
Generating the Requirements Change Request report	27
Showing requirements change requests	28
Applying requirements change requests	28
Apply button option	29
Conflict detection and resolution feature	30
Conflict examples	30
Running the RCR Conflicts Report	31
Resolving conflicts	32
Viewing requirements change request information in Rational DOORS	35
Customizing requirements change request attributes	35
Syncing the requirements change request Attrs View	36
Managing changes to Rational DOORS Analyst Add On modules	36

Chapter 5: Implementing Requirements 37

Tracing the implementation of requirements	37
Using administrative operations	39
Customizing IR attributes	39
Adding or removing attributes, or changing labels	40
Using the requirements implementation operations	42
Submitting change requests to fulfill requirements	43
Submitting change requests when requirements change management is enabled	44
Showing change requests	45
Generating activity reports	47
Adding one or more existing change requests	48
Removing one or more change requests	48

Synchronizing one requirement	49
Synchronizing all requirements	49
Synchronizing all modules	50
Appendix: Notices	51
Trademarks	53
Index	55

1

Introduction

The IBM® Rational® Change for DOORS® Interface brings together IBM® Rational® DOORS®, the world's leading requirements management tool, and IBM® Rational® Change, the best-of-breed software change management solution.

The Rational Change for DOORS Interface offers capabilities that can be grouped into three categories:

- Requirements change management
- Requirements implementation
- Requirements gathering

The requirements change management features of the Rational Change for DOORS Interface allow users to do the following:

- Propose a change to a system at a high level.
- Categorize a change into one or more requirements change requests (RCRs).
- Propose, review, and apply changes to requirements in association with the requests.

With requirements implementation, users can:

- Trace requirements through to implementation.
- Obtain immediate visibility when requirements are implemented.
- Determine the project status based on how many requirements are fulfilled.
- Assess the impact of requirements changes on the project.

Requirements gathering allows users to import enhancement requests from Rational Change into Rational DOORS to use as the basis for a new Rational DOORS document.

Features

The following are the Rational Change for DOORS Interface features:

- Create one or more implementation requests for a requirement.
- Associate one or more existing implementation requests with one or more requirements.
- Directly access implementation request information in Rational DOORS requirement objects.
- Run activity reports for requirements modules, showing each requirement's associated change requests (CRs), tasks, and files that implement the requirement.
- Start Rational Change from Rational DOORS to create, view, or modify CRs.
- Import data from Rational Change into Rational DOORS.
- Propose changes to requirements and associate the proposed changes to CRs.
- Review CRs and the associated proposed requirement changes.
- Apply proposed requirement changes to Rational DOORS.

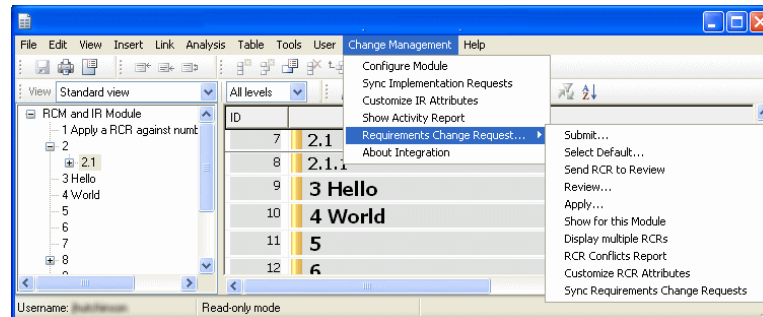
Benefits

The Rational Change for DOORS Interface allows an organization to implement a requirements-driven development process with the following benefits:

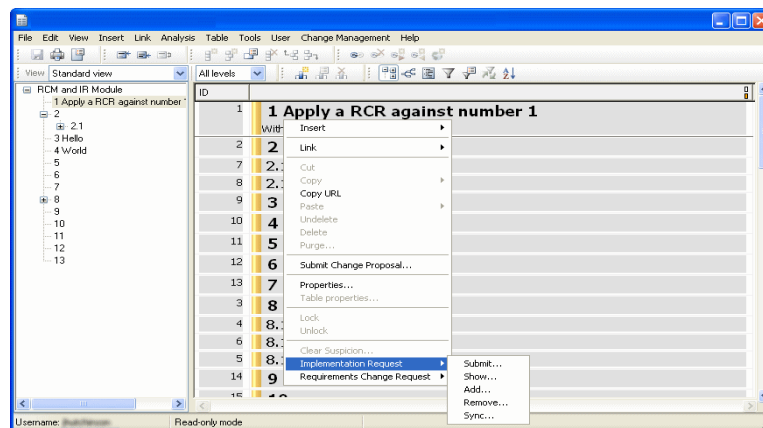
- Clearly defined and communicated requirements, which improves the focus of the development team, thereby reducing rework and improving productivity.
- Automatic establishment of the relationships between requirements and related development activities, which improves process control and productivity.
- Real-time visibility of the relationships between requirements and development activities, which helps reduce feature creep and streamlines development.
- Ability to import enhancement requests and defects submitted by users to be used as a basis for new requirements, thereby allowing traceability and re-use of customer-reported issues.

Interface menus

Administrative and module-specific Rational Change operations are available on the **Change Management** menu on the **Formal module** main menu, as shown in the following figure.



Requirement-specific Rational Change operations are available on each requirement pop-up menu, as shown in the following figure.



See the [IBM Rational Change for DOORS Interface Administration Guide](http://publib.boulder.ibm.com/infocenter/rsdp/v1r0m0/index.jsp) (located at <http://publib.boulder.ibm.com/infocenter/rsdp/v1r0m0/index.jsp>) for step-by-step instructions for the following:

- Product Requirements
- Installing the Interface
- Managing Packages

- Interface Configuration

Assumptions

Before using this document, you should have a basic understanding of how to use Rational DOORS and Rational Change. If you are unfamiliar with these products, you will find documentation on the [Rational Software Information Center](#).

Conventions

The following describes the conventions used in this document.

Typefaces and symbols

Typeface	Description
<i>Italic</i>	Used for book titles and terminology. Also designates names of roles (<i>developer</i>), states (<i>working</i>), groups (<i>ccm_root</i>), and users (<i>sue</i>).
Bold	Used for items that you can select, such as buttons, icons, and so forth, and menu paths. Also used for the names of dialog boxes, dialog box options, toolbars, folders, baselines, databases, releases, properties, and types. Also used for emphasis.
Courier	Used for commands, filenames, and directory paths. Represents command syntax to be entered verbatim. Signifies computer output that displays on-screen.
<i>Courier Italic</i>	Represents values in a command string that you supply. For example, (<i>drive:\username\commands</i>).

This document also uses the following conventions:

Note A note contains important information that should not be overlooked.

Caution A caution indicates potential danger to the database, the database server, or some other integral piece of the Rational Change for DOORS Interface software or your system.

Contacting IBM Rational Software Support

If the self-help resources have not provided a resolution to your problem, you can contact IBM® Rational® Software Support for assistance in resolving product issues.

Note If you are a heritage Telelogic customer, a single reference site for all support resources is located at <http://www.ibm.com/software/rational/support/telelogic/>

Prerequisites

To submit your problem to IBM Rational Software Support, you must have an active Passport Advantage® software maintenance agreement. Passport Advantage is the IBM comprehensive software licensing and software maintenance (product upgrades and technical support) offering. You can enroll online in Passport Advantage from <http://www.ibm.com/software/lotus/passportadvantage/howtoenroll.html>

- To learn more about Passport Advantage, visit the Passport Advantage FAQs at http://www.ibm.com/software/lotus/passportadvantage/brochures_faqs_quickguides.html.
- For further assistance, contact your IBM representative.

To submit your problem online (from the IBM Web site) to IBM Rational Software Support, you must additionally:

- Be a registered user on the IBM Rational Software Support Web site. For details about registering, go to <http://www.ibm.com/software/support/>.
- Be listed as an authorized caller in the service request tool.

Submitting problems

To submit your problem to IBM Rational Software Support:

1. Determine the business impact of your problem. When you report a problem to IBM, you are asked to supply a severity level. Therefore, you need to understand and assess the business impact of the problem that you are reporting.

Use the following table to determine the severity level.

Severity	Description
1	The problem has a <i>critical</i> business impact: You are unable to use the program, resulting in a critical impact on operations. This condition requires an immediate solution.
2	This problem has a <i>significant</i> business impact: The program is usable, but it is severely limited.
3	The problem has <i>some</i> business impact: The program is usable, but less significant features (not critical to operations) are unavailable.
4	The problem has <i>minimal</i> business impact: The problem causes little impact on operations or a reasonable circumvention to the problem was implemented.

2. Describe your problem and gather background information, When describing a problem to IBM, be as specific as possible. Include all relevant background information so that IBM Rational Software Support specialists can help you solve the problem efficiently. To save time, know the answers to these questions:
 - What software versions were you running when the problem occurred?
To determine the exact product name and version, use the option applicable to you:
 - Start the IBM Installation Manager and select **File > View Installed Packages**. Expand a package group and select a package to see the package name and version number.
 - Start your product, and click **Help > About** to see the offering name and version number.
 - What is your operating system and version number (including any service packs or patches)?
 - Do you have logs, traces, and messages that are related to the problem symptoms?
 - Can you recreate the problem? If so, what steps do you perform to recreate the problem?

- Did you make any changes to the system? For example, did you make changes to the hardware, operating system, networking software, or other system components?
 - Are you currently using a workaround for the problem? If so, be prepared to describe the workaround when you report the problem.
3. Submit your problem to IBM Rational Software Support. You can submit your problem to IBM Rational Software Support in the following ways:
- **Online:** Go to the IBM Rational Software Support Web site at <https://www.ibm.com/software/rational/support/> and in the Rational support task navigator, click **Open Service Request**. Select the electronic problem reporting tool, and open a Problem Management Record (PMR), describing the problem accurately in your own words.

For more information about opening a service request, go to <http://www.ibm.com/software/support/help.html>

You can also open an online service request using the IBM Support Assistant. For more information, go to <http://www.ibm.com/software/support/isa/faq.html>.
 - **By phone:** For the phone number to call in your country or region, go to the IBM directory of worldwide contacts at <http://www.ibm.com/planetwide/> and click the name of your country or geographic region.
 - **Through your IBM Representative:** If you cannot access IBM Rational Software Support online or by phone, contact your IBM Representative. If necessary, your IBM Representative can open a service request for you. You can find complete contact information for each country at <http://www.ibm.com/planetwide/>.

2

Managing Interface Packages

This section contains information about installing and removing Rational Change for DOORS Interface packages.

- [Installing packages \(page 9\)](#)
- [Removing packages \(page 10\)](#)

A package is a bundle of several files that are necessary for updating or adding upgraded features to the interface. Your administrator deploys these packages to the server.

When a Rational DOORS session is started, the Rational Change for DOORS Interface automatically checks the server to determine whether new packages are available for installation. If a package is available for installation, the **Package Available** dialog box opens.

For more detailed information about packages, see “Managing Packages” in the [IBM Rational Change for DOORS Interface Administration Guide](#).

Installing packages

To install packages:

1. On the **Package Available** dialog box, select **Install update now**, and then click **OK**.
If you are not ready to install the package, select **Remind me again**, and then select **in 1 day**, **in 7 days**, or **never**.
2. If you are instructed to restart Rational DOORS, close the program and restart your session.

Removing packages

If for some reason an unneeded package was installed, the system allows you to remove the package. Packages must be removed in the inverse order in which they were installed.

To remove a package:

1. On the main menu, select **Rational Change Interface > Remove Packages from Client**.

The **Remove Packages from Client - DOORS** dialog box opens, showing a list of installed packages.

2. Click to select the package that you want to remove.

You may only remove the most recently installed package. The **Remove** button becomes active when the most recently installed package is selected.

3. Click **Remove** to remove the package.
4. Click **OK** to close the dialog box.

If you are instructed to restart Rational DOORS, close the program and restart your session.

3

Requirements Gathering

This chapter describes how to retrieve CR data from Rational Change for use in Rational DOORS. To import requirements from Rational Change, the following steps must be performed:

- [Defining attribute mapping \(page 11\)](#)
- [Obtaining Rational Change data \(page 12\)](#)

Defining attribute mapping

The first step in retrieving requirements from Rational Change is to define which Rational Change attributes you want to retrieve and to define the corresponding Rational DOORS attributes where the values are to be transferred.

To define attribute mappings:

1. In Rational DOORS, open the module for which you want to define attributes.
2. On the main menu, select **Change Management > Retrieve Requirements from Rational Change > Define Attribute Mapping**.
3. Under **DOORS Attribute**, select one of the Rational DOORS attributes listed.
4. Click **Edit**.
5. In **CR Attributes**, click to select the Rational Change CR attribute you want mapped to the Rational DOORS attribute you selected.
6. Click **Close**.

If you do not select a Rational Change CR attribute before clicking **Close**, no mapping is created. This method can also be used to remove existing mappings.

7. Repeat the above steps for each Rational DOORS attribute you want to map.
8. When you have finished mapping attributes, click **OK** to save the changes and to close the dialog box.

Obtaining Rational Change data

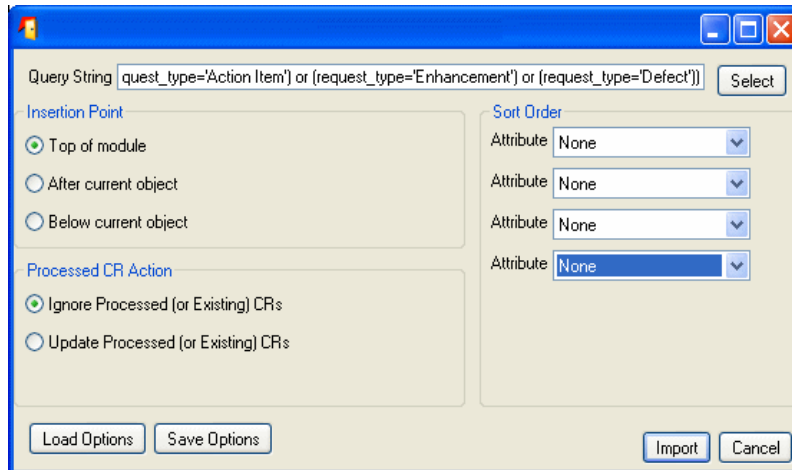
The second step in importing requirements from Rational Change into Rational DOORS is to obtain the data from Rational Change. Complete the following steps to obtain Rational Change data:

- Obtain requirements from Rational Change. See [Obtaining requirements \(page 12\)](#).
- Save the selected option (optional). See [Saving selected options \(page 14\)](#).
- Load the previously saved options (optional). See [Loading saved options \(page 14\)](#).

Obtaining requirements

To obtain requirements from Rational Change:

1. In Rational DOORS, open the applicable module.
2. On the main menu, select **Change Management > Retrieve Requirements from Rational Change > Get Requirements**.



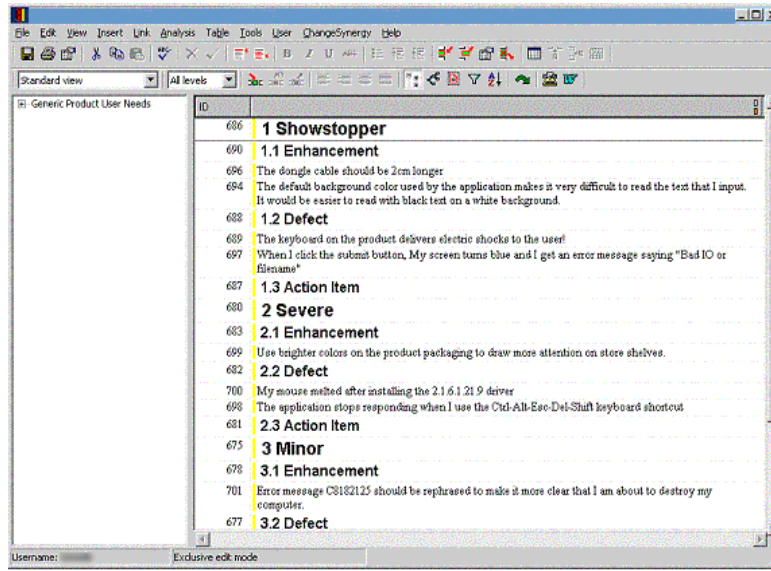
3. To the right of **Query String**, click **Select**.
4. In either the **Shared Queries** or **Saved Queries** section, click a query to select it.

5. In the **Insertion Point** section, select one of the following options to tell the system where to insert the Rational DOORS objects that are created by the get requirements operation:
 - **Top of module**—places all new objects at the top of the current module.
 - **After current object**—places all new requirements after the current object at the same level of the hierarchy.
 - **Below current object**—places all new requirements below the current object in the hierarchy.
6. In the **Processed CR Action** section, select one of the following options:
 - **Ignore Processed (or Existing) CRs**—any CR that has already been imported into the current module is ignored. Change requests that have not yet been imported are retrieved.
 - **Update Processed (or Existing) CRs**—the Rational DOORS object representing any CR that has already been processed is updated from Rational Change with the current values of the CR attributes. Change requests that have not yet been imported are retrieved.
7. In the **Sort Order** section, select a sort order (optional).

Choosing a sort order creates a hierarchy of objects in Rational DOORS, with each possible value of the CR attribute being represented by a Rational DOORS object, and with each CR that contains that value falling beneath it. You can select up to four sort attributes. Each attribute selected adds another level to the hierarchy.

8. Click **Import** to begin the import process.

The following figure shows the results of an import with `severity` and `request_type` selected as sorting attributes.



Saving selected options

To save all of the options you selected on the **Get Requirements from Rational Change - DOORS** dialog box:

1. Click **Save Options**.
2. Click **Browse** to choose a path and filename.
3. Click **Save**.

Loading saved options

Performing the following step allows you to load the options you saved in the previous set of steps.

To load previously saved options for the **Get Requirements from Rational Change - DOORS** dialog box:

1. Click **Load Options**.
2. Type the file name, or browse to the file containing your saved options.
3. Click **Load**.

4

Requirements Change Management

This chapter describes how to use the Rational Change for DOORS Interface to manage requirement changes. Using the interface allows you to do the following:

- Submit RCRs.
- Select a default RCR on which to work.
- Propose changes to requirements.
- Have the requirements automatically associated with the default RCR.
- Review RCRs.
- Apply RCRs.

Requirements change management using the Rational Change for DOORS Interface is centered around an RCR. This request contains a description of the change and other associated information such as priority, product name, reviewer comments, and the user name of the person assigned to make the requirement changes. This CR is assigned to a single requirement engineer, who then uses Rational DOORS to propose changes to one or more requirements.

Proposed changes are automatically associated with the RCR that the engineer is currently working on. After the requirement engineer completes the CR, it is reviewed by one or more people. If the CR is approved, the proposed changes can be applied to the Rational DOORS document.

You can also choose to use the system CR lifecycle that is included with the Rational Change for DOORS Interface to manage your requirements changes. The system CR lifecycle is designed for end users to submit requests for changes they want made to a system. The system CR is then broken down into one or more RCRs, and potentially into one or more implementation requests.

The Rational Change for DOORS Interface can track the following types of changes to your Rational DOORS document:

- Adding one or more objects in any structure.
- Modifying objects.
- Adding or removing outgoing links to an object.
- Deleting objects or object hierarchies.
- Relocating objects within a module.

To enforce that all changes made to a module are associated with an RCR, the Rational Change for DOORS Interface requires that the user select a default RCR whenever a module is opened for editing.

The following sections contain information about using the Rational Change for DOORS Interface change management operations:

- [Submitting requirements change requests \(page 17\)](#)
- [Opening modules \(page 18\)](#)
- [Selecting default requirements change requests \(page 19\)](#)
- [Proposing changes to Rational DOORS documents \(page 20\)](#)
- [Entering change comments \(page 21\)](#)
- [Undoing changes \(page 21\)](#)
- [Sending requirements change requests to review \(page 22\)](#)
- [Reviewing requirements change requests \(page 23\)](#)
- [Reviewing several requirements change requests simultaneously \(page 25\)](#)
- [Requirements Change Request report \(page 27\)](#)
- [Showing requirements change requests \(page 28\)](#)
- [Applying requirements change requests \(page 28\)](#)
- [Conflict detection and resolution feature \(page 30\)](#)
- [Viewing requirements change request information in Rational DOORS \(page 35\)](#)
- [Managing changes to Rational DOORS Analyst Add On modules \(page 36\)](#)

Submitting requirements change requests

The starting point for requirements change management is to submit an RCR.

There are two ways to submit an RCR:

- [With system change request lifecycle \(page 17\)](#)
- [Without system change request lifecycle \(page 17\)](#)

With system change request lifecycle

If you are using the system CR lifecycle, follow these steps to submit an RCR:

1. Log on to Rational Change, and then display the system CR on which you want to work.
2. Click **Submit Requirements CR**, and then type the required information.
In the standard lifecycle, the **Submit Requirements CR** link is available only when the system CR is in the *Requirements Change* state.
3. Click **Submit Requirements CR**.

Without system change request lifecycle

If you are not using the system CR lifecycle, you can submit an RCR through the standard Rational Change submit mechanism, or you can use the following steps to submit the RCR from Rational DOORS:

1. In the Rational DOORS module view, on the main menu, select **Change Management > Requirements Change Request > Submit**.
2. Complete all applicable fields on the submit form, and then click **Submit RCR**.

Opening modules

If you have already selected a default RCR in another module, that selection is used and you will not be prompted to select a new one. However, if you have not selected a default RCR, when you open a module that has been configured to use requirements change management, you are prompted to select a default RCR.

When prompted to select a default RCR when opening a module, you have three options:

1. Select an RCR from the list, and then click **OK** to propose changes to the module.
2. Do one of the following:
 - Click **Open for Unmanaged Changes**, and then edit the attributes that are not controlled by requirements change management. Also, the system displays a list of the modifiable attributes.
Caution Any changes you make to attributes that are not on this list are discarded when you open the module in this way.
 - Click **Open in Read-Only mode**, and then open the module for reading without selecting a default RCR.

Selecting default requirements change requests

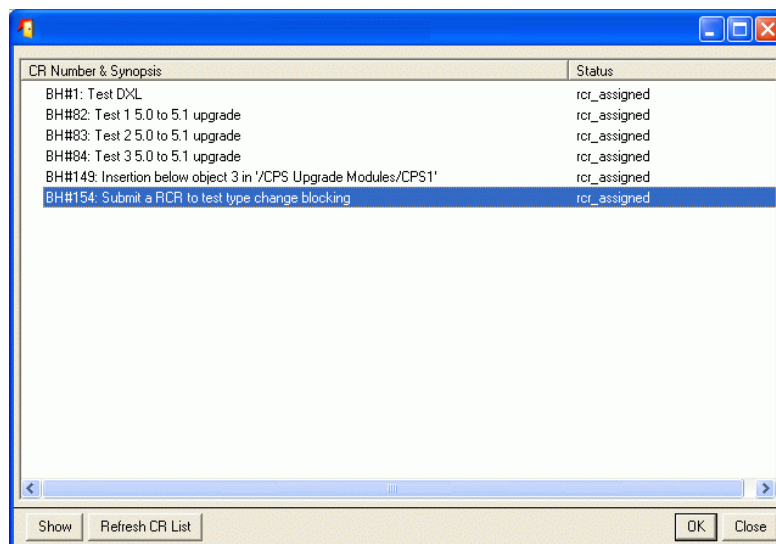
All changes made to a document, with the exception of unmanaged attributes, go through a formal review and approval process. When using requirements change management, all changes to requirements must be associated with an RCR. This allows you to track a set of changes made throughout this process.

When you select a default RCR, you are choosing to automatically associate any proposed changes to objects in the current Rational DOORS module with that CR.

To select a default RCR:

1. In Rational DOORS, open the applicable module.
2. On the main menu, select **Change Management > Requirements Change Request > Select Default**.

The **Select Default RCR - DOORS** dialog box opens, and the default RCR that is already selected is highlighted.

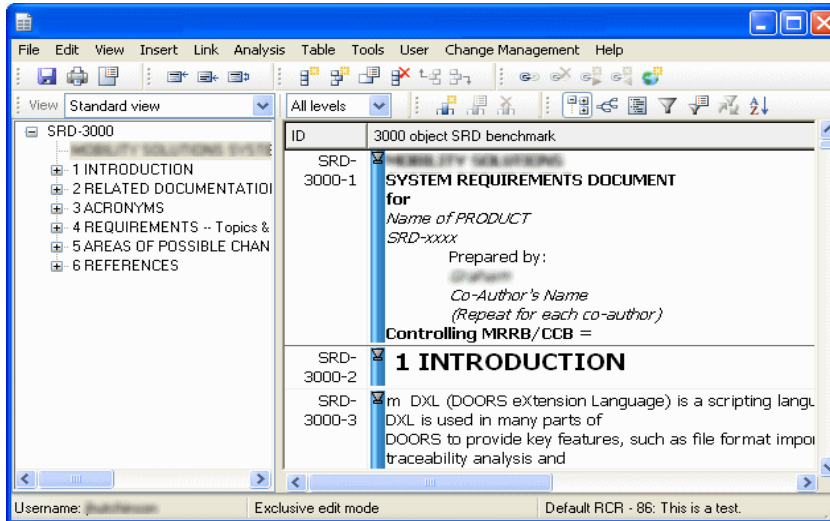


3. In **CR Number & Synopsis**, click to select the RCR you want to work on.

In the default lifecycle, only RCRs that are assigned to you are included in the list. If there are no RCRs listed, then, in Rational Change, assign one to yourself.

4. Click **OK**.

The default requirements Rational Change request is displayed in the lower right corner of the Rational DOORS module window.



Proposing changes to Rational DOORS documents

This section describes how to propose changes to a Rational DOORS document using the Rational Change for DOORS Interface. This process is also referred to as “recording changes.”

To propose changes to a Rational DOORS document:

1. Make the changes in Rational DOORS as you normally would.

The modifications can include modifying objects, adding new objects, deleting objects, moving objects, adding links, and deleting links.

2. When you have finished your modifications, in Rational DOORS, click **Save**.

Entering change comments

This section describes how to enter a comment for changes you have made to a Rational DOORS object. This operation can only be done **after** you have saved your changes.

To enter a change comment:

1. In Rational DOORS, open the applicable module.
2. Right click the Rational DOORS object you modified, and then select **Requirements Change Request > Enter Change Comment**.
3. Type a comment, and then click **OK**.

Undoing changes

Sometimes you will need to undo a change. For example, you changed the wrong item, and you need to resolve a conflict with another proposed change. Or you changed your mind about how something was written, and you want to start again from the original document.

This section describes how to undo a change you have made.

Unsaved changes

If you have not yet entered a comment and have not clicked **OK** or you have not saved the Rational DOORS module, close the module.

All changes that you made in that session are undone.

Saved changes

If you have already saved your changes:

1. Right click the object that contains the changes you want to undo, and then select **Requirements Change Request > Undo Change**.
2. Click **Confirm** to undo your change.

Note This operation is not supported for IBM® Rational® DOORS® Analyst Add On modules.

Rational DOORS Analyst Add On modules

If you are using Rational DOORS Analyst Add On modules, reject the RCR.

Sending requirements change requests to review

Once you have finished proposing changes to fulfill an RCR, that CR should be sent to review so a decision can be made as to whether the changes should be applied to the document.

To send an RCR to review:

1. In Rational DOORS, open the applicable module.
2. On the main menu, select **Change Management > Requirements Change Request > Send RCR to Review**.
3. Click **Confirm** to send the RCR to review.

All open modules that are in the edit and shared edit modes are closed. Click **Yes** to reopen them.

Reviewing requirements change requests

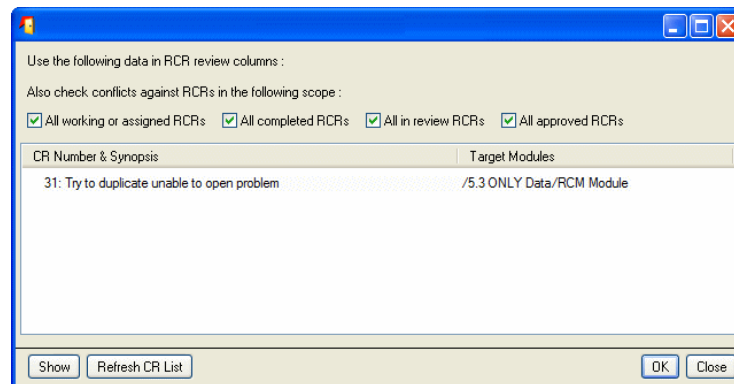
Once an RCR has been sent to review, it can be reviewed to determine whether the changes are acceptable and to identify the impact of making those changes.

The RCR review feature now displays added objects as they will be displayed when the RCR is applied. As a consequence of this change, reviewing an RCR now requires the user to open the module in the exclusive edit mode.

To review an RCR:

1. In Rational DOORS, open the applicable module.
2. Select **Change Management > Requirements Change Request > Review**.

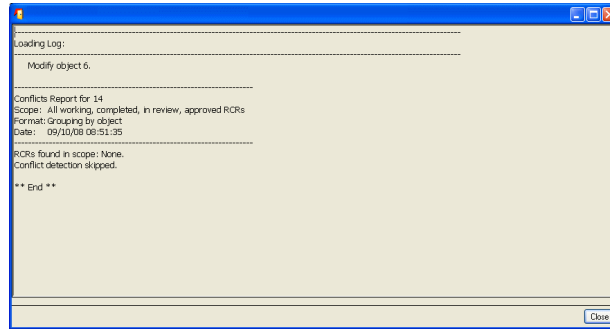
The **Select a RCR to Review - DOORS** dialog box opens and shows a list of all modules affected by each RCR is located in the second column.



3. Decide the types of RCRs you want to include when searching for conflicts.
4. Select the RCR you want to review.

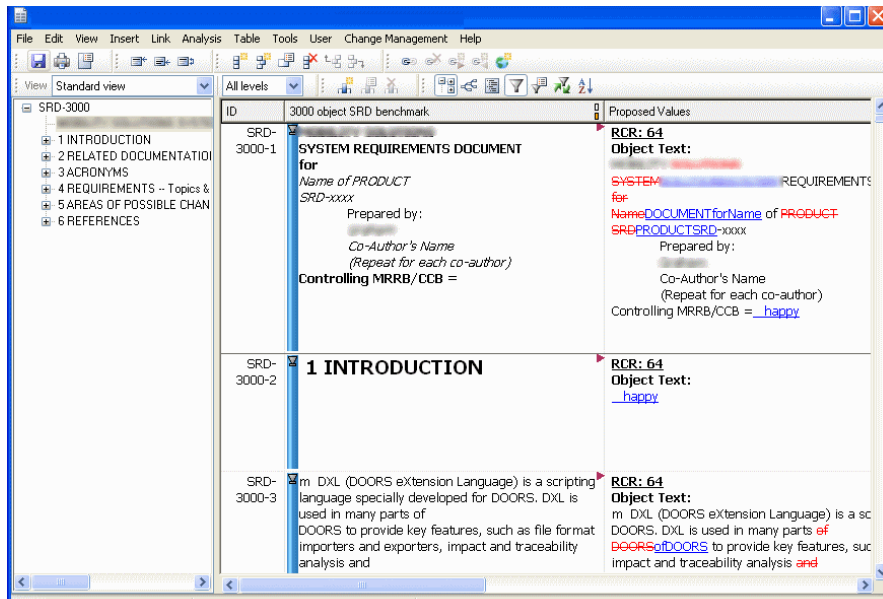
In the default lifecycle, the list contains only those RCRs in the *review* state that have your user name in one of the reviewer fields.

5. Click **OK**.



6. Click **Close**.

A new view is created in Rational DOORS as shown in the following figure. This view shows the proposed changes associated with the selected RCR and is filtered to include only those objects that are affected by the RCR. The view also contains a details column that shows any conflicts that might be present within the RCR. For more information on conflicts, see [Conflict detection and resolution feature \(page 30\)](#).

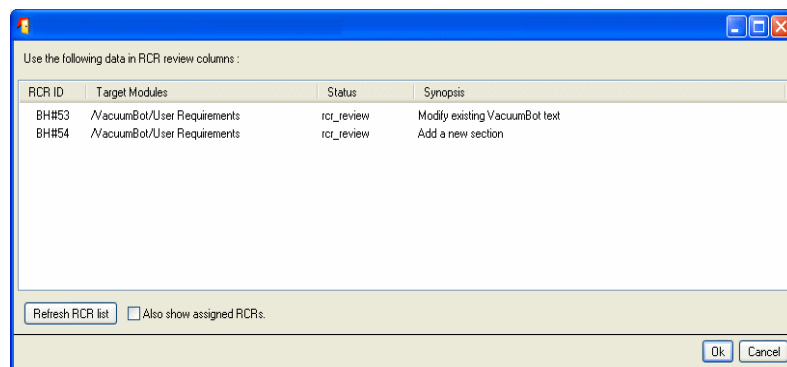


Reviewing several requirements change requests simultaneously

Simultaneously reviewing several RCRs allows you to determine how a group of changes will look together. It also allows you to identify conflicts or inconsistencies.

To simultaneously review several RCRs:

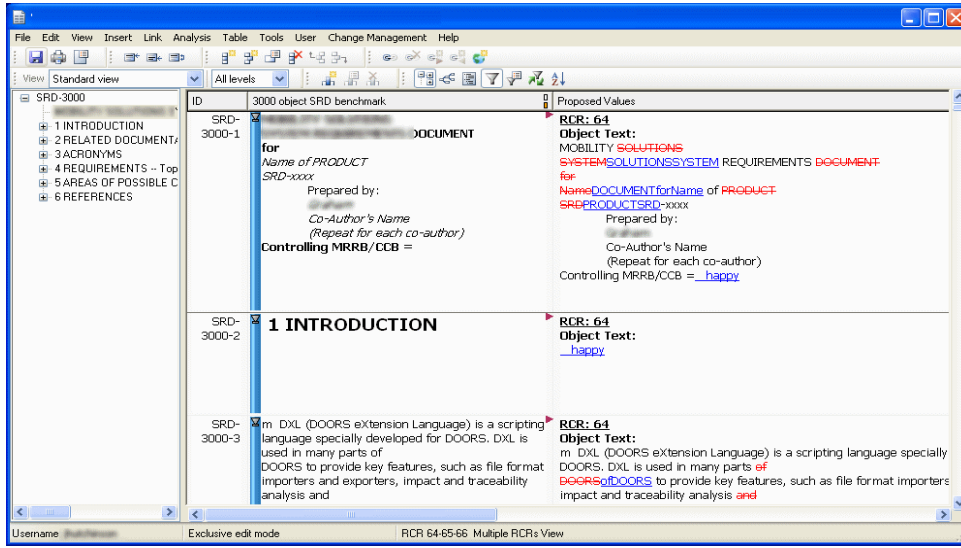
1. In Rational DOORS, open the applicable module.
2. On the main menu, select **Change Management > Requirements Change Request > Display multiple RCRs**.



3. To select RCRs that are still being worked on, select **Also show assigned RCRs**, and then click **Refresh CR List**.
4. Select the RCRs you want to review.

5. Click **OK**.

A new view is created that shows the changes that will be made by the RCRs. Also included are details about the RCRs, such as who made the changes, when they were made, and any comments.



Requirements Change Request report

The RCR report contains the following information from the Rational Change and Rational DOORS systems:

Rational Change

- All attribute values selected in the **Select Rational Change RCR Attributes - DOORS** dialog box, which you select when you generate the report.
- Attached file names, sizes, and dates.

Rational DOORS

- Changes for any modified attributes that are under Rational Change control in all the impacted DOORS modules associated with the RCR.
- The Object Heading and Object Text attribute values of Objects that were affected by the RCR. The redline differences are also shown.
- All modified, added, deleted, or moved Object IDs and their associated DOORS module name.
- All changes made to the DOORS links, including new and deleted links and identifiable before and after link information.
- The before and after values of object linking and embedded (OLE) objects.

Generating the Requirements Change Request report

To generate the RCR report:

1. In Rational DOORS, open the applicable module.
2. On the main menu, select **Change Management > Requirements Change Request > Create RCR Report**.

The **RCRs for This Module - DOORS** dialog box opens and displays all RCRs associated with the DOORS module from which the report was generated.

3. In the **RCRs for This Module - DOORS** dialog box, select the RCR from which you want to generate the report.

The **Select Rational Change RCR Attributes - DOORS** dialog box opens and displays all reportable Rational Change attributes.

4. Select all attributes that you want to include in the report, and then click **Apply** to generate the report.

Showing requirements change requests

There are several ways to locate RCRs, including querying from Rational Change, following a link from a related system CR, or from within Rational DOORS. This section describes how to identify RCRs that are associated with proposed changes to the current module.

To show RCRs with proposed changes to the current module:

1. In Rational DOORS, open the applicable module.
2. On the main menu, select **Change Management > Requirements Change Request > Show for this Module**.
3. In **CR Number & Synopsis**, click to select the RCR you want to see.
4. Click **Show**, and then review the RCR.
5. Repeat the above steps to show other RCRs.
6. Click **OK** or **Close** to close the dialog box.

Applying requirements change requests

When proposals have been approved, the Rational Change for DOORS Interface allows you to apply the proposed changes to the Rational DOORS module.

To apply the approved changes:

1. In Rational DOORS, open the applicable module in read-only mode.
2. On the main menu, select **Change Management > Requirements Change Request > Apply**.

The **Apply Requirements Change Requests - DOORS** dialog box opens and displays every approved RCR for the current module.

3. Select individual RCRs to view or apply.

To create a baseline of your Rational DOORS document after the apply has finished, select **Also create baseline after apply**.

Apply button option

When you click **Apply**, the module is reopened in edit mode without requiring that you select a default RCR. Then, the Rational Change for DOORS Interface automatically checks all *approved* RCRs for conflicts.

- If conflicts are found, the apply process is cancelled and the approved changes are not applied. The reason is written to a status log.
- If no conflicts are found, the apply process is completed. Then, the interface checks all *non-approved* RCRs associated with the modules that were affected by the *applied* RCR. If there are any conflicts, the interface marks all *non-approved* RCRs with conflicts as *obsolete*.

For example, *applied* RCR 1 is checked against three *non-approved* RCRs—RCR 2, RCR 3, and RCR 4. The system identifies a conflict with RCR 3, and RCR 3 is marked *obsolete*.

When you open a module associated with RCR 3 and RCR 3 is the **default** RCR, the **Conflict Resolution for RCR - DOORS** dialog box opens. Then, you resolve the conflict. See [Resolving conflicts \(page 32\)](#).

Conflict detection and resolution feature

The Rational Change for DOORS Interface automatically detects most conflicts during the *review* and *apply* states. During *review*, conflicts are detected only within a single RCR. During *apply*, conflicts are detected on all approved RCRs.

When the Rational Change for DOORS Interface checks for conflicts, one of the following can happen, depending on how the template was configured. See “Interface Configuration: Defining configuration templates” in the [IBM Rational Change for DOORS Interface Administration Guide](#).

- Warns you when you are modifying attributes that already have outstanding proposed changes.
- Prevents approval of RCRs that conflict with already approved RCRs.
- Helps you identify and resolve conflicts when working on an RCR that is marked *obsolete*. See [Resolving conflicts \(page 32\)](#).

Conflict examples

The following are some examples of conflicts:

- Two or more proposals were made against the same object or module. These proposals might clash with each other or be order dependent.
- Multiple RCRs were approved against the same object and the change type is **Delete** on any of the RCRs.
- The Rational DOORS attributes were changed by the RCR overlap.
- Two RCRs were approved to change the object text of a requirement. If both were applied without revision, the second one applied would overwrite the first. Similarly, one CR might request a child object to be added to requirement X while another requests that requirement X should be deleted. If the latter is applied, the former should not be applied.
- Not all changes were made using the Rational Change for DOORS Interface. The interface cannot detect manual changes. For example, an RCR might have been submitted against a requirement. Before the CR was applied, someone manually modified the requirement without using the interface. In this case, when the CR is applied, it could overwrite the other change because the two are unrelated.

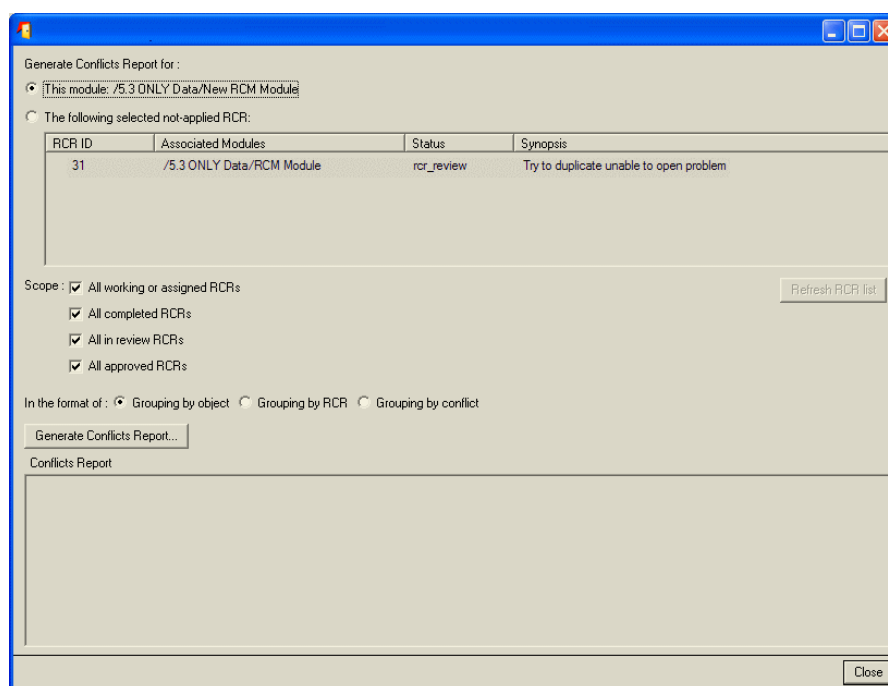
The system, however, cannot detect all conflicts, so they need to be inspected manually to evaluate the semantics of the change. See [Resolving conflicts \(page 32\)](#). Use the RCR Conflicts Report to identify the conflicts the system cannot detect. See [Running the RCR Conflicts Report \(page 31\)](#).

Running the RCR Conflicts Report

The Rational Change for DOORS Interface allows you to run a report, at any time, to detect conflicts for a single RCR, or for an entire module.

To run the RCR Conflicts Report:

1. In Rational DOORS, open the applicable module.
2. On the main menu, select **Change Management > Requirements Change Request > RCR Conflicts Report**.



3. Choose whether you want to see conflicts for all RCRs that affect the module, or only for a specific RCR.
4. Choose the types of RCRs you want to include when detecting conflicts. For example, select **All approved RCRs**.

5. Choose a report format.
 - **Grouping by object**—to show conflicts for the same Rational DOORS objects together.
 - **Grouping by RCR**—to show conflicts for the same RCR together.
 - **Grouping by conflict**—to show conflicts of the same type together.
6. Click **Generate Conflicts Report**.

The **Conflicts Report - DOORS** dialog box opens and displays the report results.

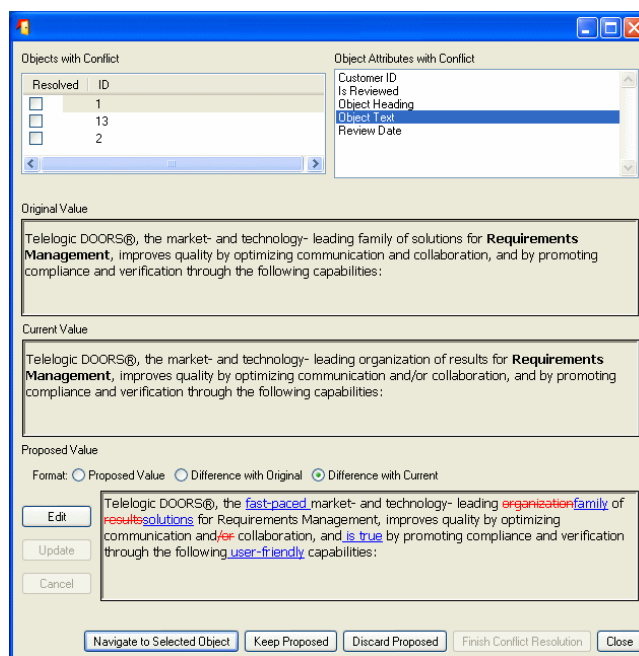
Resolving conflicts

When conflicts are found, they must be resolved manually, which is done by either rejecting one of the RCRs, or by rejecting one of the proposed changes from the conflicting RCR. Usually the person who proposed the changes or the person who is responsible for the entire document resolves the conflicts.

Caution Be careful when rejecting individual proposed changes from an RCR. If there are interdependencies between proposals and only some of the proposals are rejected, an RCR might be rendered invalid. For example, if the RCR proposes to create a hierarchy of new Rational DOORS objects and the proposal to create the topmost object is rejected, the other objects no longer have a parent object, and the RCR is invalid.

When a module is opened in exclusive or sharable edit mode and the **default** RCR is marked *obsolete*, the Rational Change for DOORS Interface displays the **Conflict Resolution for RCR - DOORS** dialog box.

For more detailed information about how RCRs are marked *obsolete*, see [Apply button option \(page 29\)](#).



The interface offers several options to resolve RCR conflicts.

At anytime, click **Navigate to Selected Object** to view the exact object within the module.

To resolve an RCR conflict:

1. In **Objects with Conflict**, review the objects that have conflicts.
2. In **Object Attributes with Conflicts**, individually select each attribute to view the details.

When you click an item in this section, the conflict results display in the **Original Value**, **Current Value**, and **Proposed Value** fields. You will resolve these one at a time.

3. Review the following sections:
 - **Original Value**—displays, prior to any changes, the attribute value.
 - **Current Value**—displays the current attribute value that is in the Rational DOORS database.
 - **Proposed Value**—displays your proposed values for that attribute.

4. In **Format**, in the **Proposed Value** section, select from the following options:
 - **Proposed Value**—displays the proposed value as it is displayed in Rational DOORS.
 - **Difference with Original**—displays the proposed value with redline differences against the original value.
 - **Difference with Current**—displays the proposed value with redline differences against the current value.
5. If you need to edit the information in **Proposed Value**:
 - a. Click **Edit** to activate the **Update** and **Cancel** options so that you can make your edits.
 - b. Click **Update** to update the object with the conflict.
To undo the edits, click **Cancel**.
6. Determine how to resolve the conflict, and then do one of the following:
 - To keep the proposed edits and allow your changes to overwrite the values in the database, click **Keep Proposed**.
The attribute value stays as is, with your changes.
 - To discard your changes and keep the database values, click **Discard Proposed**.
The proposed values are replaced with the attribute current values.
 - To override the conflict and make the RCR *active*, in **Objects with Conflicts**, select all objects, and then click **Finish Conflict Resolution** to clear the *obsolete* flag.
The **Finish Conflict Resolution** option becomes active after the resolved box is checked for each object. It also becomes active when all objects with conflicts have been resolved.
7. Click **Close**.
8. In Rational DOORS, save the module.
If you have discarded any proposed changes, the Rational DOORS module closes.

Viewing requirements change request information in Rational DOORS

The Rational Change for DOORS Interface can create and maintain a view in Rational DOORS that shows information about the RCR associated with each object in a Rational DOORS module.

This view is described in the following sections:

- [Customizing requirements change request attributes \(page 35\)](#)
- [Syncing the requirements change request Attrs View \(page 36\)](#)

Customizing requirements change request attributes

When you customize the RCR attributes, you can select the RCR attributes you want to view in Rational DOORS.

To customize RCR attributes:

1. In Rational DOORS, open the applicable module.
2. On the main menu, select **Change Management > Requirements Change Request > Customize RCR Attributes**.

The **Custom Rational Change RCR Attributes - DOORS** dialog box opens and displays a list of all the attributes defined in your Rational Change process and the name of the Rational DOORS attribute that will be created if you choose to display that attribute.

3. In **RCR Attribute**, click to select the attributes you want to be visible inside Rational DOORS.
4. If applicable, click **Edit DOORS Attribute Name** to modify the name of the Rational DOORS attribute.
5. To view information about previously applied RCRs, select **Include Applied Requirements Change Requests**.

By default, information about previously applied RCRs is not displayed.

6. Click **Apply**.

The attributes you selected are created in your Rational DOORS module.

7. Use the Rational DOORS **Insert > Column** menu to add the wanted attributes to your view.

The interface creates a view for you named **RCR Attrs View**. This view contains a default set of attributes.

Syncing the requirements change request Attrs View

The **RCR Attrs View** option retrieves the current information from the Rational Change database and refreshes the Rational Change attributes you are viewing.

To sync the requirements CR **Attrs View**:

1. In Rational DOORS, open the applicable module.
2. On the main menu, select **Change Management > Requirements Change Request > Sync Requirements Change Requests**.

Managing changes to Rational DOORS Analyst Add On modules

The requirements change management features of the Rational Change for DOORS Interface can be used to manage changes to the Rational DOORS Analyst Add On modules. To use the interface in this way, you should be aware of some special considerations and differences in behavior. Also see [Synchronizing all modules \(page 50\)](#).

- The module must be initialized for the Rational DOORS Analyst Add On **before** requirements change management is enabled.
- You might be required to merge your UML Model in the Rational DOORS Analyst Add On. This can happen in the following situations:
 - An RCR is applied to a module that has other RCRs actively being worked on.
 - You are applying multiple RCRs that might be conflicting in a single module.

5

Implementing Requirements

Sometimes you need to trace the current status of requirements during product development. Using the Rational Change for DOORS Interface, you can create new CRs or associate existing CRs with requirements. Then, you can trace the module requirements through the implementation process.

You can also view the status of a requirement associated CRs and run an activity report to view the requirements and CRs for a module.

This chapter contains information about the Rational Change for DOORS Interface traceability operations:

- [Tracing the implementation of requirements \(page 37\)](#)
- [Using administrative operations \(page 39\)](#)
- [Using the requirements implementation operations \(page 42\)](#)

For details about using Rational Change, see the Rational Change Help.

Tracing the implementation of requirements

After a CR is submitted against a requirement, Rational Change can track the details of the changes made to the requirement, such as who submitted the CR and why.

You can also use Rational Change to notify users when the status of the CR is modified, such as when the request is assigned, resolved, or deferred. See the Rational Change Help for more information.

When you run the Rational Change for DOORS Interface, the interface shows the CR number and the CR status for each requirement. This information is shown on a Rational DOORS view, named **IR Attrs View**, which is created by the interface. By default, these attributes are labeled **csint_ir_crstatus**, **csint_ir_problem_number** and **csint_ir_problem_synopsis**, as shown in the following figure.

ID		csint_ir_crstatus	csint_ir_problem_number	csint_ir_problem_synopsis
3	1 Overview	ir_assigned	BH#50	/Test5.1/IR Test Module/3
12	2 Requirements			
13	2.1 Remove Reliance on <Product Name> session			
14	The integration shall not require the existence of a <product name> installation or session on the client machine.	ir_assigned ir_created	BH#50 BH#75	/Test5.1/IR Test Module/3 /Test5.1/IR Test Module/14
15	2.2 Single Sign-On			
16	Users of the integration shall not need to manually log into <product name> <product name> integration.	ir_created	BH#80	/Test5.1/IR Test Module/16
17	2.2.1 need more			
18	2.2.2 more more more			
19	2.2.3 Foo			
10019	2.2.4 asdfasd	ir_assigned	BH#49	/Test5.1/IR Test Module/3

For information about adding and removing attributes or changing their labels, see [Customizing IR attributes \(page 39\)](#).

You can submit a new CR for a requirement, or you can associate one or more existing CRs with a requirement. Also, at any time, you can synchronize one or more requirements with one or more CRs to update the Rational DOORS view with the latest Rational Change information.

The sync operation updates Rational DOORS with Rational Change information. Therefore, if you enter a CR ID directly into the **Implementation Request** column, it is no longer listed after you run a sync operation.

Using administrative operations

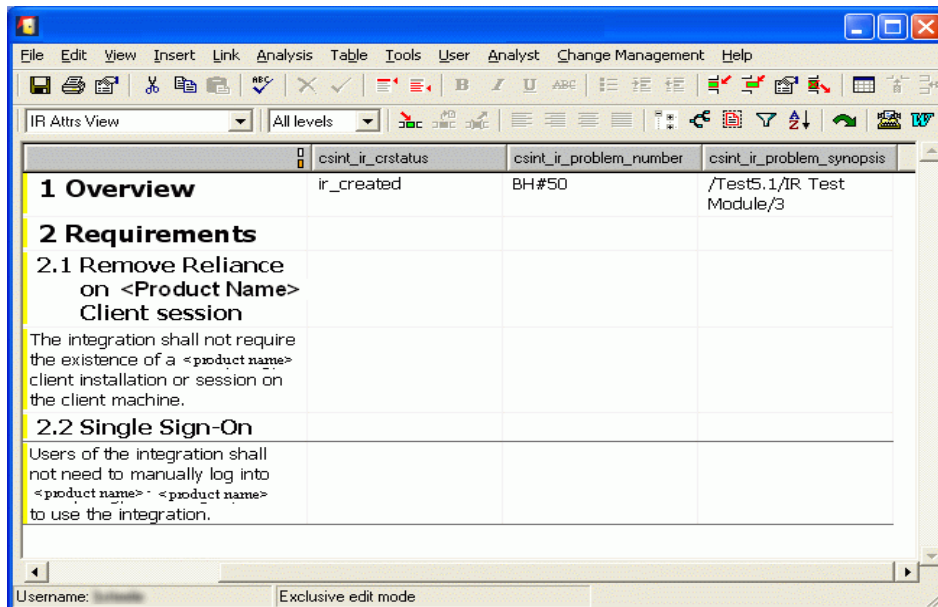
This section discusses the operations available for administering the requirements implementation portion of the Rational Change for DOORS Interface. All users can perform these operations.

- [Customizing IR attributes \(page 39\)](#)
- [Adding or removing attributes, or changing labels \(page 40\)](#)

Customizing IR attributes

From the Rational DOORS **Formal module**, you can choose the CR attributes that are included in the **IR Attrs View**. You can also change the labels used for these attributes.

For example, the `crstatus`, `problem_number` and the `problem_synopsis` attributes are included by default in the **IR Attrs View** and are labeled **csint_ir_status**, **csint_problem_number**, and **csint_problem_synopsis** respectively. See the figure below for an example.

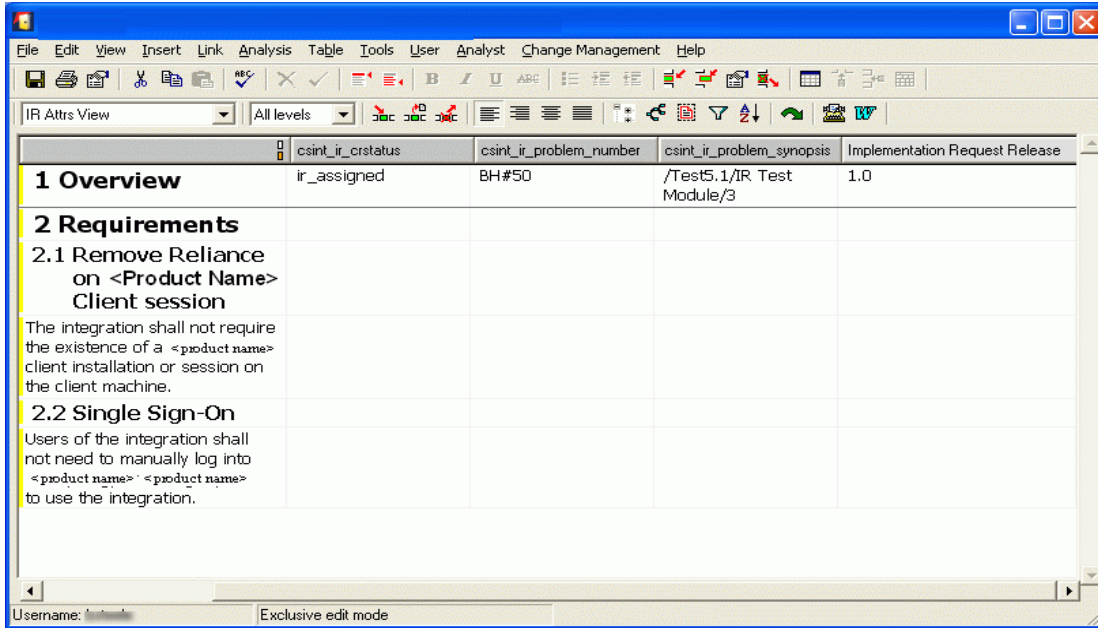


The screenshot shows the 'IR Attrs View' window in Rational DOORS. The window title is 'IR Attrs View' and it has a menu bar with 'File', 'Edit', 'View', 'Insert', 'Link', 'Analysis', 'Table', 'Tools', 'User', 'Analyst', 'Change Management', and 'Help'. Below the menu bar is a toolbar with various icons. The main area displays a table with the following data:

	csint_ir_crstatus	csint_ir_problem_number	csint_ir_problem_synopsis
1 Overview	ir_created	BH#50	/Test5.1/IR Test Module/3
2 Requirements			
2.1 Remove Reliance on <Product Name> Client session			
The integration shall not require the existence of a <product name> client installation or session on the client machine.			
2.2 Single Sign-On			
Users of the integration shall not need to manually log into <product name> - <product name> to use the integration.			

At the bottom of the window, there is a status bar showing 'Username: [redacted]' and 'Exclusive edit mode'.

If you were to add the release attribute to the Rational Change for DOORS Interface view and label the value **Implementation Request Release**, the following view opens.

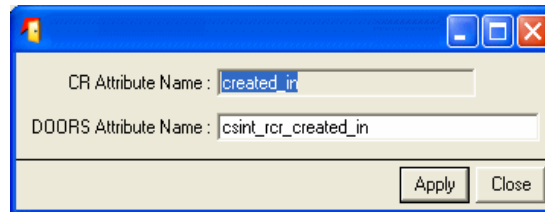


Adding or removing attributes, or changing labels

To add or remove an attribute, or to change its label:

1. In Rational DOORS, open the applicable module.
2. On the main menu, select **Change Management > Customize IR Attributes**.

3. In **IR Attribute**, do one of the following:
 - To add an attribute, select the attribute check box.
 - To remove an attribute, clear the attribute check box.
 - To change the name of the Rational DOORS attribute that is included in the Rational Change data:
 - a. Click the attribute row to highlight it.
 - b. Click **Edit DOORS Attribute Name**.
 - c. In **DOORS Attribute Name**, type the new attribute name, in the format shown in the figure below, and then click **Apply**.



4. In the **Custom Change IR Attributes - DOORS** dialog box, click **Apply**.
5. If you have added attributes, use **Insert > Column** to insert them into your view.
6. On the main menu, select **Change Management > Sync Implementation Requests**.

The new attributes columns are updated with the Rational Change values.

Using the requirements implementation operations

This section shows the operations available for tracing the status of requirements.

Note Before performing any operations, you must enable the **Requirements Implementation** option from within the configuration dialog box.

The following sections explain how to use the requirement-specific traceability operations:

- [Submitting change requests to fulfill requirements \(page 43\)](#)
- [Submitting change requests when requirements change management is enabled \(page 44\)](#)
- [Showing change requests \(page 45\)](#)
- [Generating activity reports \(page 47\)](#)
- [Adding one or more existing change requests \(page 48\)](#)
- [Removing one or more change requests \(page 48\)](#)
- [Synchronizing one requirement \(page 49\)](#)
- [Synchronizing all requirements \(page 49\)](#)

Submitting change requests to fulfill requirements

You can submit a CR that will be used to fulfill a requirement.

To submit a CR to fulfill a requirement:

1. In Rational DOORS, open the applicable module.
2. Right-click the requirement.

If you need to select more than one requirement, use shift+left-click to select multiple items. Only a single CR is submitted.

Note When using this feature, be aware that all child requirements of the selected requirements are included in the CR, even if your view does not show them.

3. On the pop-up menu, select **Implementation Request > Submit**.

If you have requirements change management enabled, and there has been at least one RCR applied to the selected requirement, see [Submitting change requests when requirements change management is enabled \(page 44\)](#).

4. If prompted, select a submit form, and then click **Load**.
5. In the **Change Request Submission** page, type or select information for the CR, and then click **Submit IR**.

In the Rational DOORS **Formal module** window, the **Implementation Request Status** column shows that the requirement status is *submitting*.

For descriptions of the fields, click the **More Info** link on the Rational Change submit form.

6. Right-click the requirement, and then select **Implementation Request > Sync**.

The Rational Change for DOORS Interface updates the Rational Change CR attribute columns for the selected requirement. Also, you can submit or add multiple CRs to a requirement.

For more information, see [Synchronizing one requirement \(page 49\)](#).

Submitting change requests when requirements change management is enabled

This section describes the extra steps required to submit a CR when requirements change management is enabled. These steps are only applicable when at least one RCR has been applied to the selected requirement.

Performing these extra steps:

- Ensures that the implementation request addresses all of the appropriate changes made by a given RCR.
- Allows the interface to automatically associate your newly created implementation request with both the selected RCR and its parent system CR, if one exists.

1. Follow steps 1 and 2 in [Submitting change requests to fulfill requirements \(page 43\)](#).

A dialog box listing all of the RCRs that have been applied to the selected requirement opens.

2. Select the RCR you are implementing, and then click **OK**.
3. Select one or more requirements from the list, shown in the following figure, and then click **OK**.

The Rational Change submit form opens and displays those requirements that were modified by the RCR selected in step 1 of this procedure.

4. Continue with step 3 in [Submitting change requests to fulfill requirements \(page 43\)](#).

Showing change requests

In Rational Change, you can show the CRs that are related to a requirement. This allows you to use the Rational Change show form to view all information contained in the CR.

To show a CR:

1. In Rational DOORS, open the applicable module, and then right-click the requirement.
2. On the pop-up menu, select **Implementation Request > Show**.

If only one CR is associated with the requirement, the **Change Request Information - DOORS** dialog box opens.

Change Request Information [Save] [Printer Friendly View] [Help]

Created [More Info...]

Transitions: [Assign](#) | [Reject](#) | [Admin Transition](#)

CR ID: 58 Status: ir_created

Synopsis: /5.3 ONLY Data/Brown is Crng 1/13

Description: sadfasdfasdt [Fit to Text]

Resolver: Any [User Icon] Priority: Any

Release: Any

Product Name: Product A Product Subsystem: Dialog 2

Associated Task(s): [New](#) | [Add](#)

Associated CR(s): [Add](#)

Associated Requirement(s):

DOORS ID	DOORS Heading	DOORS Object Text
5.3 ONLY Data/Brown is Crng 1/13		sadfasdfasdtXXXX

Attachment(s): [Attach Files](#)

Transition Log: Show Transitions Show Modifications Show Notes [Expand Log Text](#) | [Collapse Log Text](#)

Submitted to ir_created by [Jared Matheson \(@matheson\)](#) on 2007/10/03 09:24:33 ⤴

Relationship change made by [Jared Matheson \(@matheson\)](#) on 2007/10/03 09:24:34 ⤴

Created 'associated_req' relationship from cr '58' to misc 'req00001a6_13-1'

Comments: [Fit to Text]

Transitions: [Assign](#) | [Reject](#) | [Admin Transition](#)

Applet: com.telelogic.cs.applet.CSCMApplet started [Internet]

If multiple CRs are associated with the requirement, an interim dialog box displays all of the CRs for the requirement. Click a listed CR ID to view the CR in the **Change Request Information - DOORS** dialog box.

The screenshot shows a web-based interface for viewing associated change requests. At the top, the title is "Associated Change Requests". There are buttons for "Reload", "Print", and "Save As...". Below the title, the "Report" is "Basic Summary" and the "Query" is "All CRs". The date and time "10/04/2007 8:30:57" and a "Count: 2" are also displayed. A "Select:" dropdown menu is set to "Choose Selection Set", with "Transition" and "Modify" buttons next to it. Below this is a table with three columns: "CR ID", "Status", and "Synopsis". The table contains two rows of data. The first row has a checkbox, the CR ID "58", the status "ir_created", and the synopsis "5.3 ONLY Data/". The second row has a checkbox, the CR ID "59", the status "ir_created", and the synopsis "5.3 ONLY Data/Bria Data/ , 1/13 5.3 ONLY Data. , /14 5.3 ONLY Data/ , /15". Below the table is another "Select:" dropdown menu and "Transition" and "Modify" buttons. At the bottom center, there is a "Top of Page" link.

CR ID	Status	Synopsis
<input type="checkbox"/> 58	ir_created	5.3 ONLY Data/
<input type="checkbox"/> 59	ir_created	5.3 ONLY Data/Bria Data/ , 1/13 5.3 ONLY Data. , /14 5.3 ONLY Data/ , /15

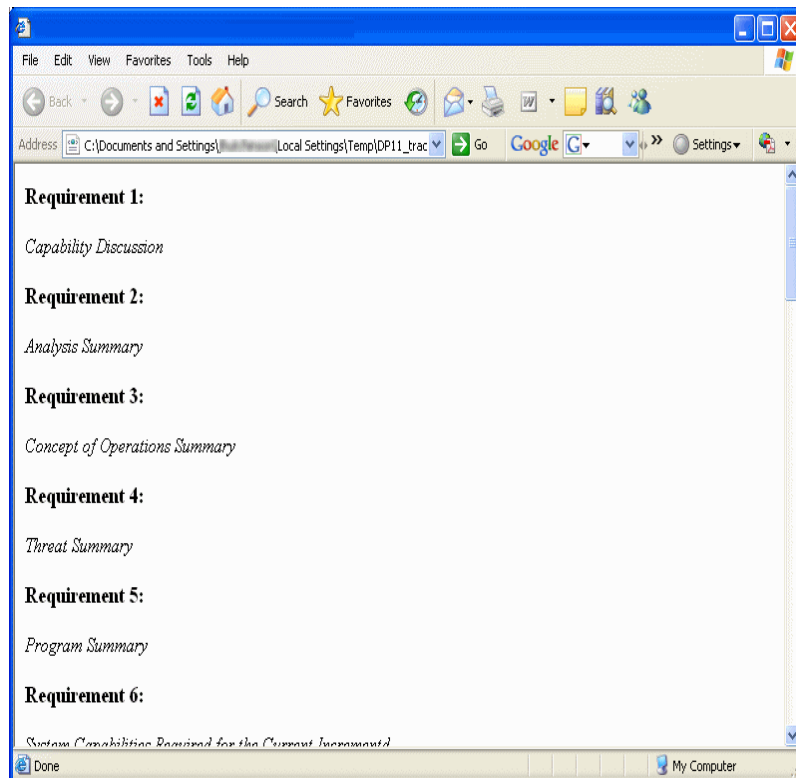
Generating activity reports

You can generate an activity report that shows all the of the module requirements and their associated implementation requests.

To generate an activity report:

1. In Rational DOORS, open the applicable module.
2. On the main menu, select **Change Management > Show Activity Report**.

The Rational Change for DOORS Interface generates the report in the background, and the report opens when it is completed. The following is a sample default report.



Adding one or more existing change requests

You can add one or more existing CRs to one or more Rational DOORS requirements by specifying their CR IDs.

If you do not know the CR IDs, you can query the Rational Change database for them. For more information, see the Rational Change Help.

To add one or more CRs to one or more Rational DOORS requirements:

1. In Rational DOORS, open the applicable module.
2. Right-click the requirement, or shift-click multiple, contiguous requirement objects.
3. On the pop-up menu, select **Implementation Request > Add**.
4. In **Add Implementation Request ID**, type one or more CR IDs. Separate multiple entries with commas.
5. Click **OK**.

The Rational Change for DOORS Interface adds the CR IDs to the requirements and updates all Rational Change CR attribute columns.

Removing one or more change requests

You can remove one or more CRs from one or more Rational DOORS requirements by specifying their CR IDs.

If you do not know the CR IDs, you can query the Rational Change database for them. For more information, see the Rational Change Help.

To remove one or more CRs from one or more Rational DOORS requirements:

1. In Rational DOORS, open the applicable module.
2. Right-click the requirement, or shift-click multiple, contiguous requirement objects.
3. On the pop-up menu, select **Implementation Request > Remove**.
4. In **Remove Implementation Request**, type one or more CR IDs. Separate multiple entries with commas.
5. Click **OK**.

The Rational Change for DOORS Interface removes the CRs from the requirements and updates all Rational Change CR attribute columns.

Synchronizing one requirement

You can synchronize all CRs in the Rational Change database associated with a Rational DOORS requirement in a module. This operation queries the Rational Change database to find all CRs associated with the requirement and updates all the requirement Rational Change CR attribute columns. The operation also updates the Rational DOORS requirement data stored in Rational Change for the selected requirement.

To synchronize the CRs for a single requirement:

1. In Rational DOORS, open the applicable module, and then right-click the requirement.
2. On the pop-up menu, select **Implementation Request > Sync**.

The Rational Change for DOORS Interface updates the values in all Rational Change CR attribute columns for the selected requirement. Also, this operation synchronizes all objects that are currently selected in Rational DOORS.

Synchronizing all requirements

You can synchronize all CRs in the Rational Change database with all Rational DOORS requirements in a module. This operation queries the Rational Change database to find all CRs associated with all the module requirements, and then updates all Rational Change CR attribute columns for all requirements in the module. The operation also updates Rational DOORS object data stored in Rational Change.

To synchronize all requirements in a module:

1. In Rational DOORS, open the applicable module.
2. On the main menu, select **Change Management > Sync Implementation Requests**.

The Rational Change for DOORS Interface updates the values in all Rational Change CR attribute columns for all requirements in the module.

Synchronizing all modules

You can synchronize all modules in the Rational Change database with all Rational DOORS requirements in a module. This operation syncs all implementation requests (IRs) and RCRs for all modules in the Rational DOORS database that are configured to use the Rational Change for DOORS Interface. The operation also updates Rational DOORS object data stored in Rational Change.

To synchronize all modules:

1. In Rational DOORS, open the applicable module.
2. On the main menu, select **Rational Change Interface > Sync All Modules**.

The Rational Change for DOORS Interface updates the values in all Rational Change IR and RCRs attribute columns for all requirements in all modules.

Appendix: Notices

This information was developed for products and services offered in the U.S.A. IBM may not offer the products, services, or features discussed in this document in other countries. Consult your local IBM representative for information on the products and services currently available in your area. Any reference to an IBM product, program, or service is not intended to state or imply that only that IBM product, program, or service may be used. Any functionally equivalent product, program, or service that does not infringe any IBM intellectual property right may be used instead. However, it is the user's responsibility to evaluate and verify the operation of any non-IBM product, program, or service.

IBM may have patents or pending patent applications covering subject matter described in this document. The furnishing of this document does not grant you any license to these patents. You can send written license inquiries to:

IBM Director of Licensing
IBM Corporation
North Castle Drive
Armonk, NY 10504-1785
U.S.A.

For license inquiries regarding double-byte character set (DBCS) information, contact the IBM Intellectual Property Department in your country or send written inquiries to:

IBM World Trade Asia Corporation
Licensing
2-31 Roppongi 3-chome, Minato-ku
Tokyo 106-0032, Japan

The following paragraph does not apply to the United Kingdom or any other country where such provisions are inconsistent with local law:
INTERNATIONAL BUSINESS MACHINES CORPORATION PROVIDES THIS PUBLICATION "AS IS" WITHOUT WARRANTY OF ANY KIND, EITHER EXPRESS OR IMPLIED, INCLUDING, BUT NOT LIMITED TO, THE IMPLIED WARRANTIES OF NON-INFRINGEMENT, MERCHANTABILITY OR FITNESS FOR A PARTICULAR PURPOSE. Some states do not allow disclaimer of express or implied warranties in certain transactions. Therefore, this statement may not apply to you.

This information could include technical inaccuracies or typographical errors. Changes are periodically made to the information herein; these changes will be incorporated in new editions of the publication. IBM may make improvements and/or changes in the product(s) and/or the program(s) described in this publication at any time without notice.

Any references in this information to non-IBM Web sites are provided for convenience only and do not in any manner serve as an endorsement of those Web sites. The materials at those Web sites are not part of the materials for this IBM product and use of those Web sites is at your own risk.

IBM may use or distribute any of the information you supply in any way it believes appropriate without incurring any obligation to you.

Licensees of this program who wish to have information about it for the purpose of enabling: (i) the exchange of information between independently created programs and other programs (including this one) and (ii) the mutual use of the information which has been exchanged, should contact:

Intellectual Property Dept. for Rational Software
IBM Corporation
1 Rogers Street
Cambridge, Massachusetts 02142
U.S.A.

Such information may be available, subject to appropriate terms and conditions, including in some cases, payment of a fee.

The licensed program described in this document and all licensed material available for it are provided by IBM under terms of the IBM Customer Agreement, IBM International Program License Agreement or any equivalent agreement between us.

Any performance data contained herein was determined in a controlled environment. Therefore, the results obtained in other operating environments may vary significantly. Some measurements may have been made on development-level systems and there is no guarantee that these measurements will be the same on generally available systems. Furthermore, some measurements may have been estimated through extrapolation. Actual results may vary. Users of this document should verify the applicable data for their specific environment.

Information concerning non-IBM products was obtained from the suppliers of those products, their published announcements or other publicly available sources. IBM has not tested those products and cannot confirm the accuracy of

performance, compatibility or any other claims related to non-IBM products. Questions on the capabilities of non-IBM products should be addressed to the suppliers of those products.

This information contains examples of data and reports used in daily business operations. To illustrate them as completely as possible, the examples include the names of individuals, companies, brands, and products. All of these names are fictitious and any similarity to the names and addresses used by an actual business enterprise is entirely coincidental.

If you are viewing this information in softcopy format, the photographs and color illustrations may not be included.

Trademarks

IBM, the IBM logo, ibm.com, Rational, Rational Change, Rational DOORS, and Rational DOORS Analyst Add On are trademarks or registered trademarks of International Business Machines Corporation in the United States, other countries, or both. These and other IBM trademarked terms are marked on their first occurrence in this information with the appropriate symbol (® or ™), indicating US registered or common law trademarks owned by IBM at the time this information was published. Such trademarks may also be registered or common law trademarks in other countries. A current list of IBM trademarks is available on the Web at www.ibm.com/legal/copytrade.html.

Other company, product or service names may be trademarks or service marks of others.

Index

A

- activity reports
 - generating, 47
 - running, 2
 - showing module requirements, 47
- administrative operations, 39
- apply button, 29
- applying requirement change requests, 28
- associating change requests to requirements, 48
- attributes
 - adding, 40
 - csint_ir_crstatus, 38, 39
 - csint_ir_problem_number, 38, 39
 - csint_ir_problem_synopsis, 38, 39
 - customizing, 35, 39
 - mapping, 11
 - relabeling, 40
 - release, 40
 - removing, 40
- attributes mappings, defining, 11
- Attrs View, updating, 36

C

- change comments, entering, 21
- change requests
 - adding existing, 48
 - associating to requirements, 48
 - removing, 48
 - selecting defaults, 19
 - showing, 45
 - submitting, 17, 43
 - submitting, when change management is enabled, 44

- conflicts
 - defined, 30
 - examples, 30
 - report, 31
 - resolving, 32
- CR see change requests

I

- IBM Customer Support, 5
- installing interface, 9
- interface
 - benefits, 2
 - capabilities, 1
 - features, 2
 - installing, 9
 - menus, 3
- IR Attrs View
 - csint_ir_crstatus, 38, 39
 - csint_ir_problem_number, 38
 - csint_ir_problem_synopsis, 38
 - customizing, 39

M

- mapping attributes, 11
- modules
 - opening, 18
 - synchronizing all, 50

O

- operations
 - administrative, 39
 - requirements implementation, 42

P

- packages
 - installing, 9
 - removing, 10

R

- Rational Change
 - obtaining data, 12
 - obtaining requirements, 12
- Rational DOORS
 - mapping attributes with CS, 11
 - proposing changes, 20
- Rational DOORS Analyst Add On
 - managing changes, 36
 - undoing changes, 21
- RCR Conflicts Report, 31
- RCR see Requirements Change Requests
- recording changes, 20
- relabeling attributes, 40
- removing attributes, 40
- reports
 - activity, 47
 - RCR Conflicts, 31
 - Requirements Change Request, 27
- requirements
 - adding change requests, 48
 - change in status, 37
 - obtaining, 12
 - removing change requests, 48
 - showing change requests, 45
 - submitting change requests, 43
 - synchronizing all, 49
 - synchronizing one, 49
 - tracing, 37

Requirements Change Request

- apply button, 29
 - applying, 28
 - customizing attributes, 35
 - locating, 28
 - report, 27
 - reviewing, 23
 - selecting defaults, 19
 - sending to review, 22
 - showing, 28
 - simultaneously reviewing, 25
 - Status View, updating, 36
 - submitting, 17
 - viewing information about in Rational DOORS, 35
- requirement-specific traceability operations, 42

S

- synchronizing
 - all modules, 50
 - all requirements, 49
 - one requirement, 49

T

- tracing implementation of requirements, 37

U

- undoing changes
 - Rational DOORS Analyst Add On, modules, 21
 - recorded, 21
 - unrecorded, 21