

IBM Rational Tau

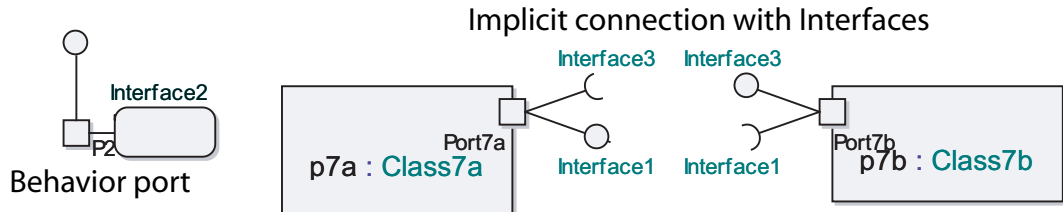
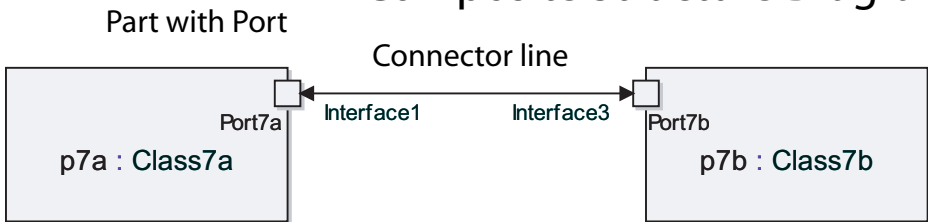
UML Quick Reference

Licensed Materials – Property of IBM

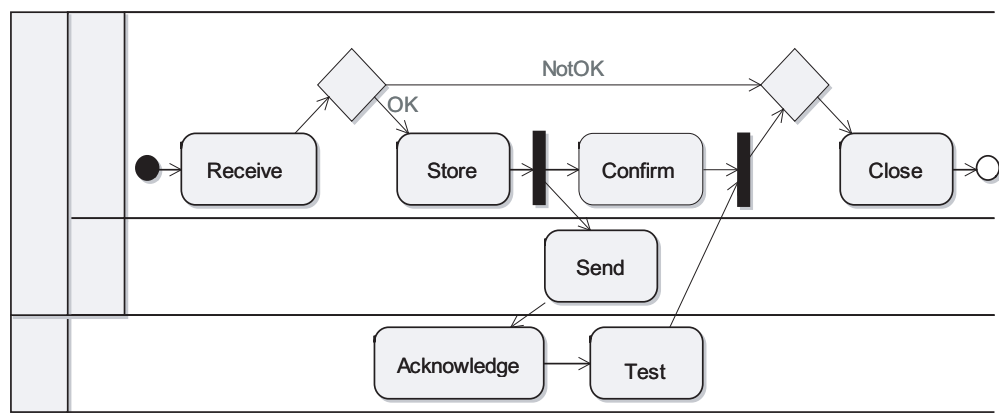
© Copyright IBM Corporation 2002, 2008. All Rights Reserved

U.S. Government Users Restricted Rights: Use, duplication or disclosure restricted by
GSA ADP Schedule Contract with IBM Corp.

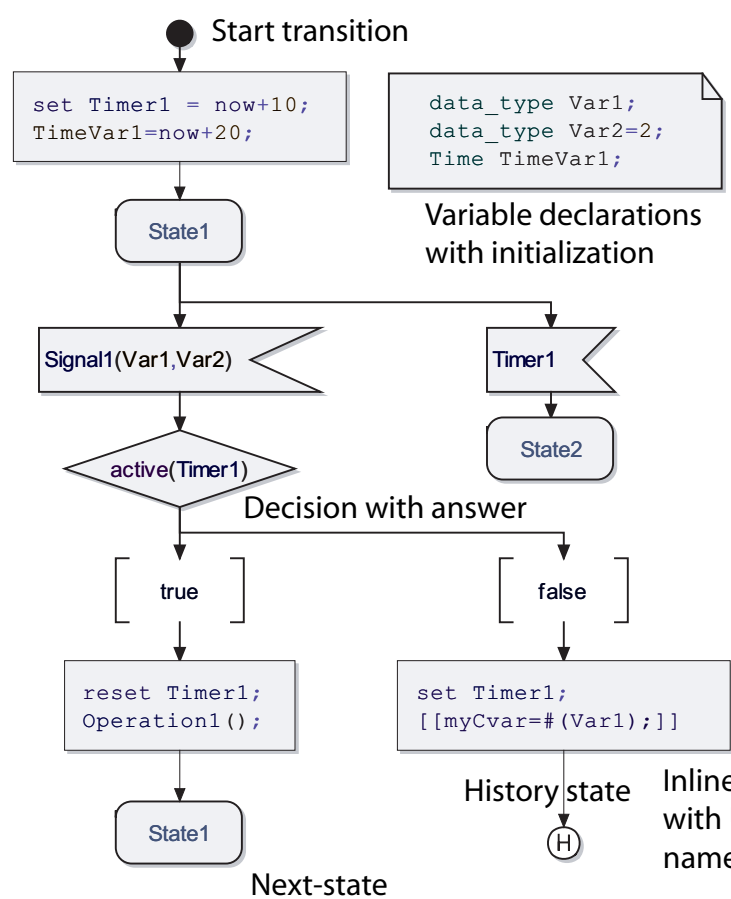
Composite Structure Diagram



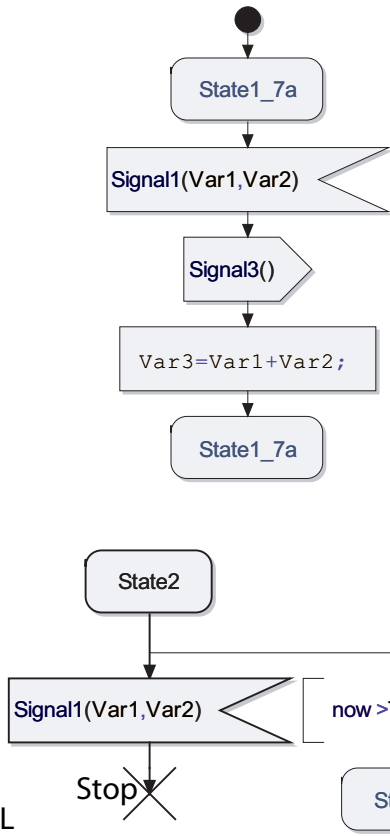
Activity Diagram



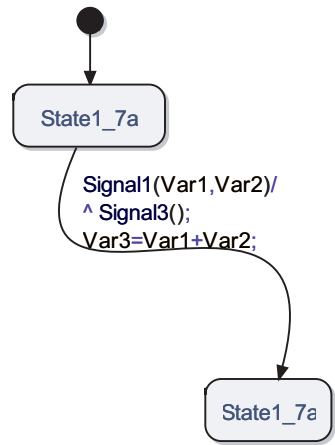
State Machine Diagram



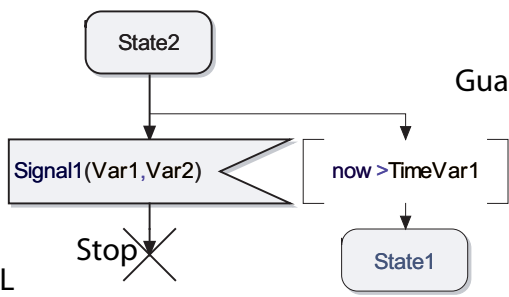
Transition-oriented



State-oriented



Guard

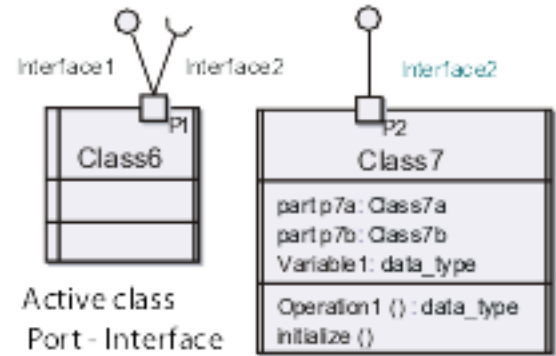


Package Diagram

Package with import dependency



Component Diagram



Active class
Port - Interface

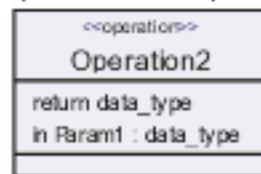
Deployment Diagram

Configuration build

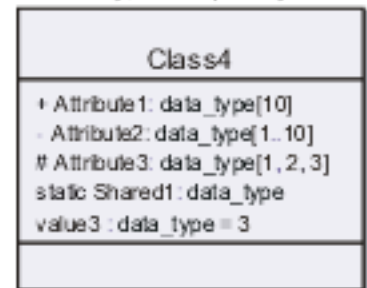


Class Diagram

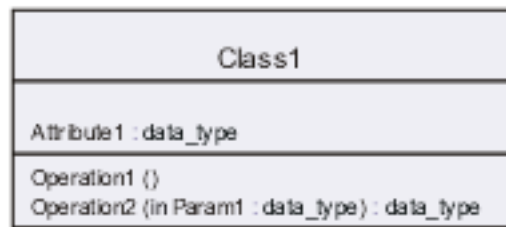
Operation with parameters



Attribute
Visibility, Multiplicity



Passive class
with attributes and operations



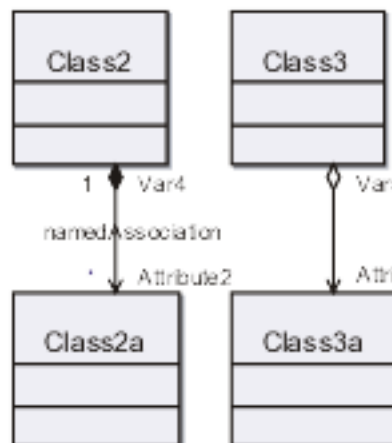
```

/* Local type declarations */
syntype data_type = Integer;
const Integer value1=1;
const data_type value2=2;
class Class1 {
    data_type Attribute1;
    void Operation1();
    data_type Operation2 ( in data_type Param1);
}
    
```

```

class Class4 {
    public data_type [10] Attribute1;
    private data_type [1..10] Attribute2;
    protected data_type [1, 2, 3] Attribute3;
    static data_type Shared1;
    const data_type value3=3;
}
    
```

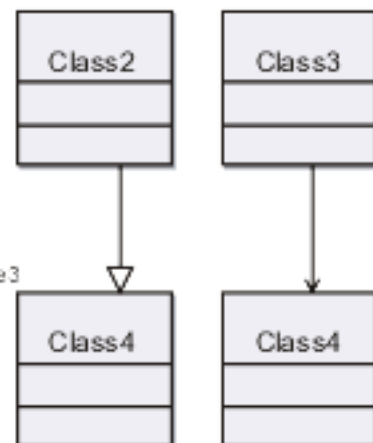
Association - Composition



```

class Class2 {
    part Class2a [*] Attribute2;
}
class Class3 {
    shared Class3a Attribute3;
}
    
```

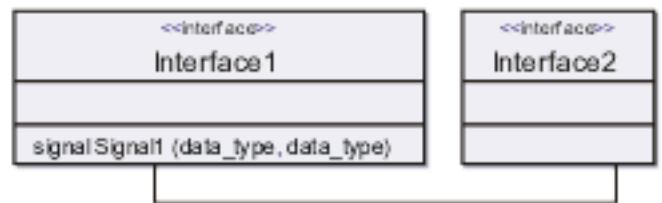
Inheritance - Dependency



```

class Class2 : Class4 {
}
class Class3 dependency to Class4 {
}
    
```

Interface with signal - Associated interfaces



Timer and default duration



```

timer Timer1=5;
    
```

data_type Operation1()

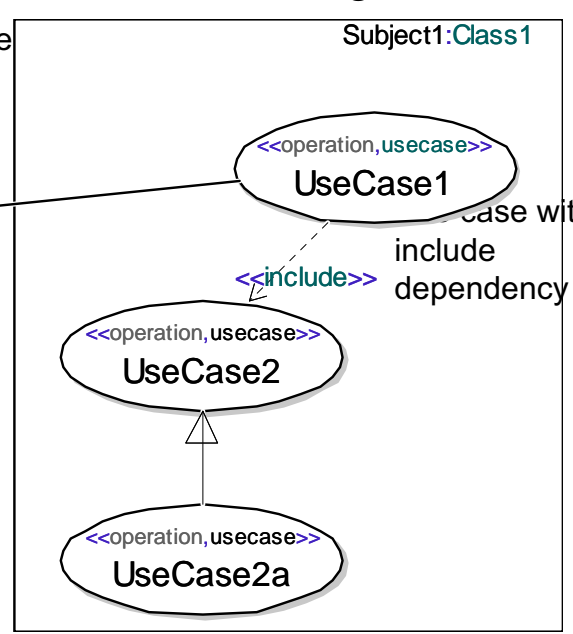
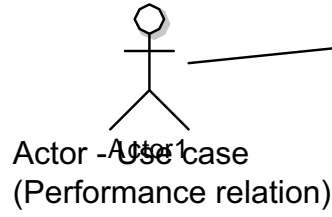
```

{
Integer i;
Integer j=10;
for (i=0;i<j;i=i+1)
    j=j-1;
return j;
}

```

Subject frame with type

Subject1:Class1

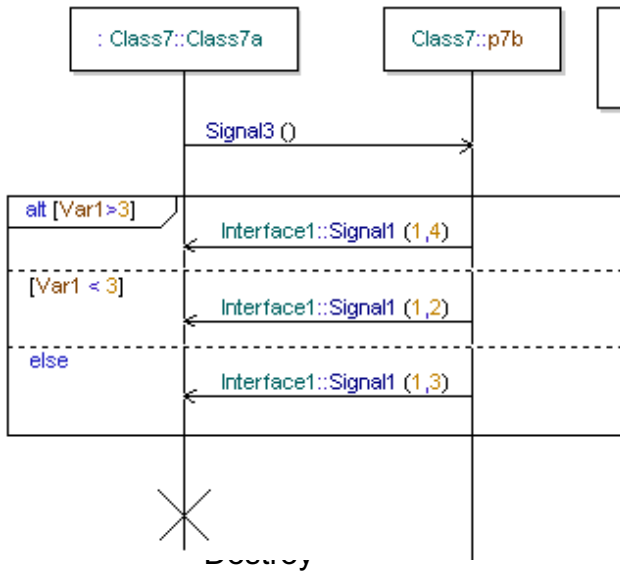


Generalization between Use cases

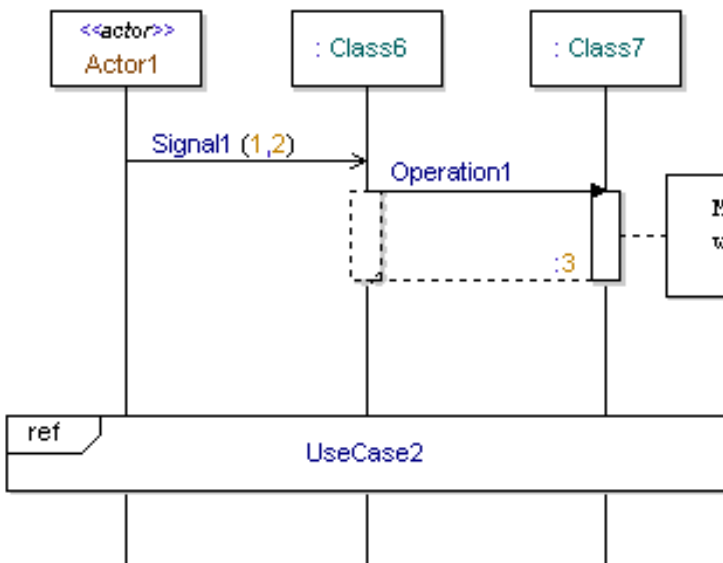
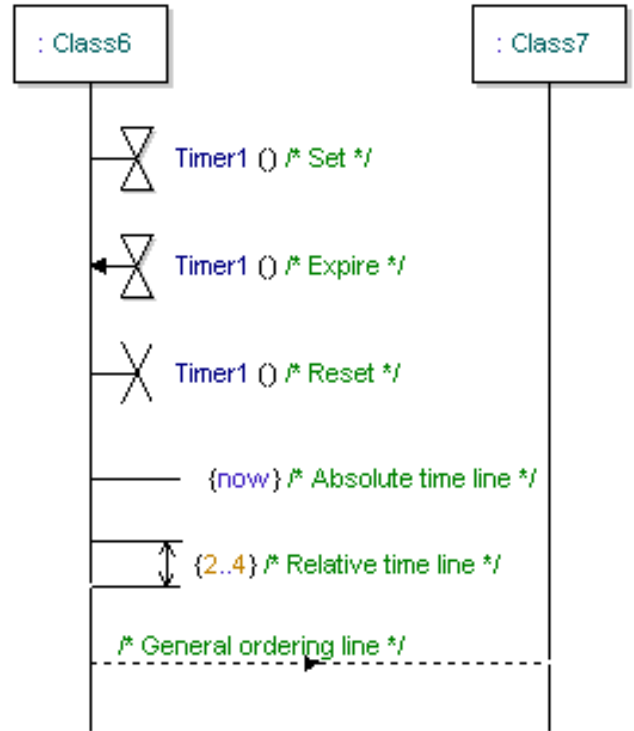
Sequence Diagram

Lifeline, typed

Lifeline, named



Timer and time line



Referenced Use case