



IBM Rational Method Composer

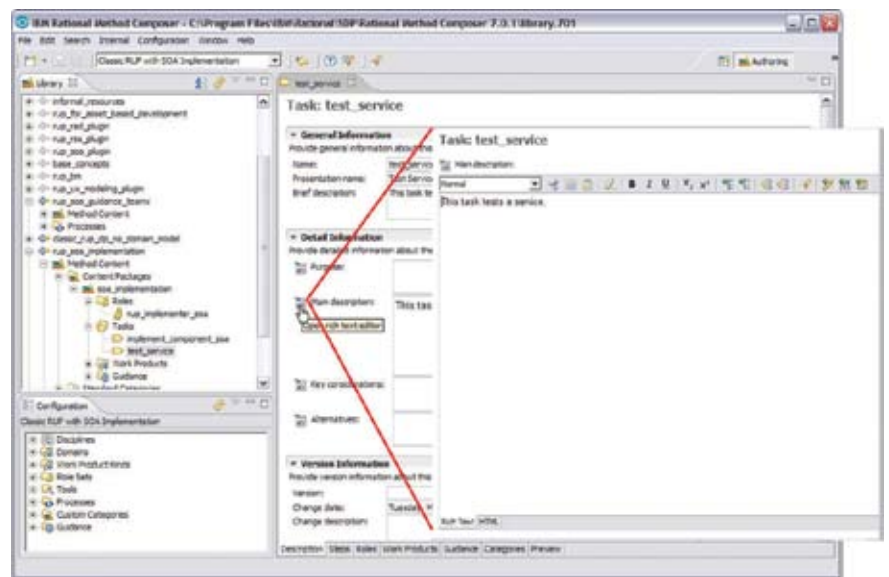
Highlights

- ***Includes the IBM Rational Unified Process solution—a proven process adopted by thousands of projects worldwide***
- ***Facilitates collaboration between business and IT teams, helping organizations more effectively manage software projects and maximize returns on technology investments***
- ***Provides project plan templates and best practices to help teams quickly identify project goals, determine the types of resources needed to complete a project, and pinpoint critical project milestones***
- ***Includes out-of-the-box processes and guidance for small projects, large projects, SOAs, COTS packaged application development, maintenance, systems engineering, program management and portfolio management***
- ***Facilitates team communication, improves project predictability and helps you better manage and mitigate risk by using a common methodology***
- ***Provides artifact templates, tool help and an online user community to help you jump-start projects and put process into action***
- ***Maximizes individual practitioner productivity by providing each team member with personalized project views***
- ***Offers easy-to-use configuration tools for you to tailor your process for your projects***
- ***Increases project responsiveness and resilience by providing flexible and scalable process guidance***
- ***Included in the IBM Rational Team Unifying Platform and IBM Rational Portfolio Manager offerings***

Including and extending the IBM Rational Unified Process®—or IBM RUP®—methodology, the IBM Rational® Method Composer software represents a major evolution of IBM's process solutions. The RUP solution is a software process framework that has guided some 500,000 developers around the world in a broad range of software and systems development projects. Built on top of the Eclipse framework, the Rational Method Composer software adds new best practices to the RUP methodology that leverage IBM's expertise in portfolio management, collaborative distributed development and service-oriented architectures (SOAs). It replaces the Rational Process Workbench® offering with new, open-source process customization tools that will tightly link business and IT activities, enabling teams across an organization to collaborate more effectively, reduce software project failures, and save time and money.

The Rational Method Composer software is a complete business-driven development solution that aligns development, operations and line-of-business teams; enhances the ability to address key initiatives and priorities (e.g., SOA, compliance, packaged application development); improves team efficiency, responsiveness and productivity; and increases project quality. Current RUP customers and IBM Business Partners can move their software and systems processes and plug-ins from the RUP environment to the Rational Method Composer environment with easy-to-use migration tools.

In the Rational Method Composer software, the authoring and tooling environment is decoupled from the RUP solution to support a broad set of processes covering full IT Lifecycle Management (ITLM). The Rational Method Composer product includes an open, Eclipse architecture-based platform that delivers the RUP methodology and aspects of IBM Rational Summit Ascendant™ software's library of best practices, and provides process guidance for building higher-quality software and systems. It provides content for different project types—from cross-project to enterprise-level guidance—and adds value for individual practitioners, team members, project managers,



Easy-to-use form-based editing with built-in rich text editor

process engineers and content owners. IBM customers, IBM Business Partners and members of the Eclipse community can easily extend this open process platform by capturing, sharing and reusing software best practices that solve a range of complex development challenges.

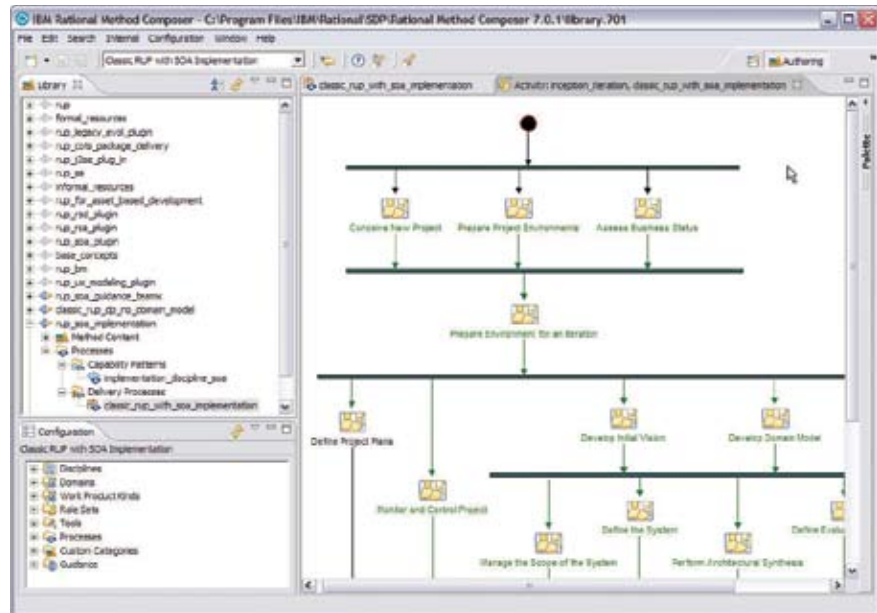
The Rational Method Composer software extends beyond the RUP methodology's historical focus on development by enabling tight integration between business and IT teams, helping organizations to more effectively link improved business processes to required software projects, and effectively manage those projects to maximize a return on their technology investment. It

provides delivery processes and new best practices for helping teams quickly identify project goals, determine the types of resources needed to complete a project, and pinpoint critical project milestones. The Rational Method Composer software also allows you to create project plan templates (work-breakdown structures) with responsible roles/resources and work products produced/consumed, and export them to portfolio management tools such as IBM Rational Portfolio Manager and project scheduling tools such as Microsoft® Project applications. All team members can then share the information throughout the entire project lifecycle, enabling them to make data-driven decisions that help save time and money while gaining greater control over the project outcome.

The Rational Method Composer software's new, easy-to-use process tools and innovative technology reduce the time it takes to customize best practices from weeks and days to hours and minutes. These tools include process guidance wizards that instruct teams on how to tailor the process to achieve their individual project goals. In an effort to help teams get started on new projects and overcome complex development challenges, the Rational Method Composer software also offers new tools that help automate the capture of best practices that other projects across the company can use. These reusable process components are powerful building blocks that help teams complete projects on time and within budget.

Out-of-the-box processes

The Rational Method Composer software provides two types of processes: delivery processes and capability patterns. A delivery process describes an end-to-end process, including the order in which you may consider



Activity diagram editing for a delivery process

doing things, what phases to have and stereotypical iteration patterns. You can use these processes out of the box or as a starting point for further customizations. A capability pattern describes a reusable cluster of activities in a common process area that expresses and communicates process knowledge for a key area of interest, such as a discipline. Capability patterns can be used as building blocks to assemble delivery processes or larger capability patterns.

Delivery processes

- *RUP for Small Projects*
- *RUP for Medium-sized Projects*
- *RUP for Large Projects (Classic RUP)*
- *RUP for Commercial Off-the-Shelf (COTS) or Packaged Application Development*
- *RUP for Systems Engineering*
- *RUP for Business Modeling*
- *RUP for Maintenance*

Capability patterns

- *RUP for Disciplines (such as analysis and design, configuration and change management, requirements, project management and testing)*
- *RUP for Designing SOA Services*
- *RUP for Asset-based Development*

Specialized content around domains and technologies

The Rational Method Composer software provides specialized content around various domains and technologies that you can use to augment or alter the listed delivery processes, or to build completely new delivery processes. This content is packaged in plug-ins, which you can add at any time to your process libraries. IBM and its associates continually add new plug-ins. Some key content areas that the plug-ins cover include Java™ 2, Enterprise Edition (J2EE) and Microsoft .NET development, user-centered engineering and tool-specific guidance, which explains how to effectively leverage IBM Rational software development tools and other vendors' tools.

The following domain and technologies processes are available:

- *RUP for J2EE*
- *RUP for .NET*
- *RUP for Rational Application Developer (RAD)*
- *RUP for Rational Software Architect (RSA)*
- *RUP for WebSphere® Business Modeler*
- *RUP for Legacy Evolution*
- *RUP for User Experience*

Process for the enterprise

The Rational Method Composer software addresses cross-project concerns at the program, portfolio and enterprise levels. The content includes program management, portfolio management, asset-based development, business engineering, process engineering and systems engineering. IBM has also released the IBM Tivoli® Unified Process framework, which addresses the needs of operations and systems management organizations. This process is based on a United Kingdom standard called IT Infrastructure Library (ITIL). IBM Tivoli Unified Process software is not included in the IBM Rational Method Composer software, but it is hosted on the same tooling. This means that you can customize and use together content from the Rational Method Composer software and the IBM Tivoli Unified Process software.

The following enterprise processes are available to download from IBM developerWorks:

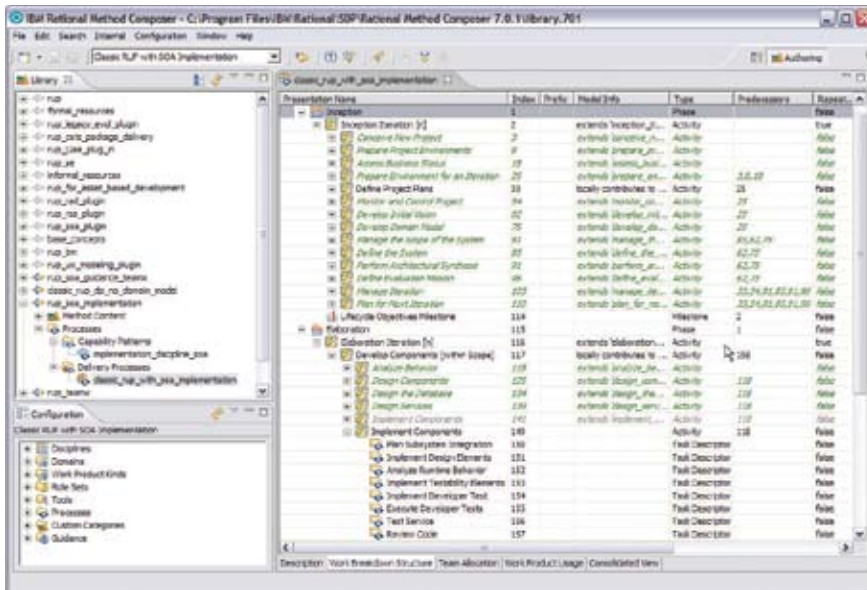
- *RUP for SOA Governance*
- *RUP for Program Management*
- *IBM Rational Portfolio Management (for initiatives)*

Harvest and communicate effective practices

The Rational Method Composer software addresses the two major areas of interest for the process manager: content reuse and the ability to customize the process to the needs of different project types.

Content reuse

To address the breadth of process needs that your organization has, you need to reuse what works for other organizations rather than invent everything from scratch. The ability to leverage content in the Rational Method Composer software with plug-ins produced by IBM and its associates provides a good foundation. Rational Method Composer software also makes it easy for organizations to capture their own best practices and make them seamlessly extend to the Rational Method Composer content libraries.



Work-breakdown structure editing for a delivery process

Customizability

You need to be able to leverage process content to describe how to effectively execute projects of different types. You can do this by enabling process managers to package content into reusable capability patterns, and to construct delivery processes for various project types out of those patterns.

Adapt to your project needs

The Rational Method Composer software focuses on addressing three critical areas for project managers: rapid project initiation, flexibility and reality-based management.

Rapid project initiation

Once an organization decides to initiate a project, time is typically precious. The out-of-the-box delivery processes give project managers a quick starting point for planning and

initiating a project. Each delivery process provides an initial project template and identifies appropriate project milestones, work products to deliver by each milestone, and types of resources required for each phase. The integration between the Rational Method Composer software and IBM Rational Portfolio Manager software allows a project manager to rapidly instantiate a project plan based on a starting template and project specifics.

Flexibility

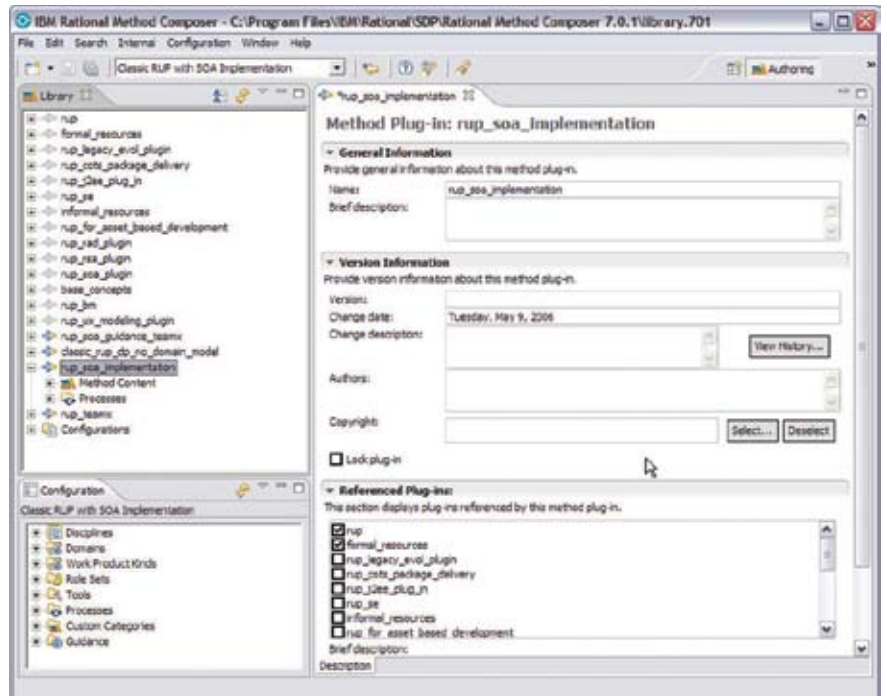
No two projects are alike, so project managers need to rapidly modify processes to address specific project needs. Through plug-ins and process components, project managers can add or remove content around various technologies and domains, such as J2EE development or advanced requirements management. Capability patterns allow project managers to rapidly add or remove reusable chunks of processes addressing common problems. The Rational Method Composer software also allows a project manager to rapidly modify any aspect of the delivery process.

Reality-based management

A delivery process is assembled from capability processes that capture recurring process patterns, which you can instantiate as you need them rather than all at once. This is possible through integration with IBM Rational Portfolio Manager software, which provides a complete environment for managing RUP projects and allows team members to understand what tasks are the most important and then collaborate on them. The Rational Portfolio Manager offering also provides advanced portfolio management capabilities, such as allowing the entire team to view various measures related to project health and status, requirements and code churn, defect trends, and the project's progress relative to plan.

Process made practical for the practitioner

The Rational Method Composer software focuses on three areas for the practitioner: productivity, guidance and personalization.



Create new plug-ins or extend existing ones

Productivity

To facilitate increased productivity, the Rational Method Composer software includes helpful templates, artifacts and tools.

- *Templates to offer a starting point for producing key artifacts*
- *Roles, tasks and artifacts to understand how to effectively collaborate with the rest of the team*
- *Tool mentors to explain specific guidance on how to best leverage tools*

Guidance

Providing proven concepts and historical best practices, Rational Method Composer software helps guide users.

- *Guidelines, techniques and concepts to learn about new concepts and how to effectively leverage key technologies and techniques*
- *Examples of what has worked from other projects*
- *Checklists to rapidly see how you can improve the work*

Personalization

Based on your experience level, role and interest, you can personalize your process interface to focus on what matters to you. Simply use the MyView tool for Web browser access.

Specifications

The Rational Method Composer product is available in the following languages:

English

French

German

Italian

Spanish

Brazilian Portuguese

Japanese

Korean

Simplified Chinese

Traditional Chinese

The following operating systems are supported:

Microsoft Windows® XP Professional

Microsoft Windows 2000 Professional

Microsoft Windows 2003 Enterprise

Red Hat Enterprise Linux® 4 WS

SUSE Linux SLES 9 SP3

For more information

To learn more, view online demonstrations or download the evaluation version of the IBM Rational Unified Process framework included inside the IBM Rational Method Composer software, please visit:

ibm.com/software/awdtools/rmc



© Copyright IBM Corporation 2006

IBM Corporation
Software Group
Route 100
Somers, NY 10589

Produced in the United States of America
06-06
All Rights Reserved

IBM, the IBM logo, Rational, Rational Process Workbench, Rational Unified Process, RUP, Summit Ascendant, Tivoli and WebSphere are trademarks or registered trademarks of International Business Machines Corporation in the United States, other countries or both.

Linux is a registered trademark of Linus Torvalds in the United States, other countries or both.

Microsoft and Windows are trademarks or registered trademarks of Microsoft Corporation in the United States, other countries or both.

Other company, product and service names may be trademarks or service marks of others.

The information contained in this documentation is provided for informational purposes only. While efforts were made to verify the completeness and accuracy of the information contained in this documentation, it is provided "as is" without warranty of any kind, express or implied. In addition, this information is based on IBM's current product plans and strategy, which are subject to change by IBM without notice. IBM shall not be responsible for any damages arising out of the use of, or otherwise related to, this documentation or any other documentation. Nothing contained in this documentation is intended to, nor shall have the effect of, creating any warranties or representations from IBM (or its suppliers or licensors), or altering the terms and conditions of the applicable license agreement governing the use of IBM software.