

Deliver Now with Confidence

Rational SiteLoad

Can your Web Site Handle Heavy Traffic?

Web development cycles are short, pressure is high, and everyone involved is working hard. There is very limited time to test how well the site will perform under increasing numbers of users, yet no one on the project wants any performance surprises.

Speed, Ease, and Critical Data

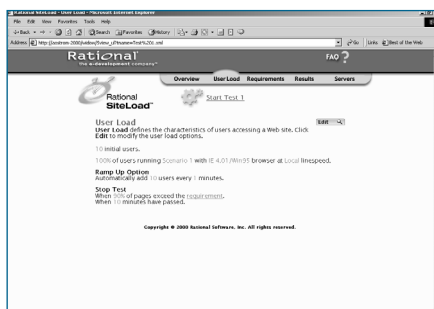
Platform-independent Rational® SiteLoad™ fits easily into tight Web development schedules because it is the first performance testing tool to combine three elements critical to effective Web testing:

- Highly intuitive browser-based interface
- Quick, intuitive results
- Summary diagnostic data

Rational SiteLoad allows for frequent, shorter test cycles that give you the immediate value of diagnosing problems during development, upgrades, and major changes, significantly lowering the risk of failure.

Developed for Webmasters

This innovative new testing tool from Rational Software was specifically designed to meet the needs of Webmasters, Web designers and Web application developers for fast testing of Web-based applications.



Browser-based Rational SiteLoad is easy to use.

Up and Running in an Hour

Within an hour of downloading Rational SiteLoad you can see real-time graphical reports of your site's response times and resource usage.

The browser-based interface requires no training; and there is no time-consuming learning curve, although online help is available if needed.

Intuitive Power Tool

Rational SiteLoad reliably represents real Web traffic and gives you a quick assessment of the site and its resources as it performs under load conditions of your choice. All in a multi-platform, browser-based interface.

These powerful capabilities mean that you can launch your site with the confidence that your systems are optimized for the loads you do expect and for those that may surprise you.

Set Test Criteria in Seconds

When setting up a load-performance test session in Rational SiteLoad, you first define the pages to be tested—record a script—and set the criteria for the page-load time for the test. Next you use the AutoRamp feature to select how many users will be added per time increment.

There is no long configuration and test-creation process with Rational SiteLoad—your test session is quickly up and running.

Browser-based Control Panel

You control everything happening in each testing session, including developing test scripts, and accessing reports—from the fast and easy-to-use control panel.

AutoRamp: Ramp-up User Numbers

AutoRamp makes it extremely easy to evaluate your system's response time under various user loads. Tell the test session how many users you want to add, in what time increments, and Rational SiteLoad automatically ramps up the

HIGHLIGHTS

Easy-to-use and install browser-based tool

Monitors server resources in response to increased loads

Scales loads from a few users to hundreds of thousands

Analyzes, graphs, and summarizes test results

Gives you control over what you test and under what loads and scenarios

Comes ASP ready — can be hosted on Windows 2000, NT, Sun Solaris V2.7+, and Red Hat Linux

Provides cross-platform record/playback

Makes troubleshooting fast and easy

load until it reaches your pre-set criteria. For example, you may chose to have 50 users added automatically every one minute, or 100 users every two minutes.

AutoRamp also saves you time by allowing you to run tests with multiple load levels all in one test, and see the results in a combined report.

Instant RealStatus Access

At any time during the test session, real-time details of the response times and resources used by the system(s) under test are available to you, as well as a comparison of the AutoRamp results at each load level. Why test for an hour when you can know after five minutes where the system is broken?

Platform Independence

Rational SiteLoad gives you easy-to-use support for the platforms with which your site interfaces.

Rational SiteLoad is a platform-independent Web-server tool, so it easily supports native cross-platform record and playback on the platforms with which your site interfaces.

Detailed, Reliable Server Data

Rational SiteLoad is the only testing tool that gives you absolute simplicity of use through a browser-based interface while providing you with complex data about the performance of your site and system.

Monitor Resources

The Resource Monitor built-in to Rational SiteLoad shows you the state of the system resources relative to response time, at any time during or after testing. Monitor:

- CPU System
- CPU User
- CPU Queue Length
- Percent Disk Used
- Cache Hit Ratios
- Memory Percentage Used
- Memory Page Input/Sec
- Memory Page Ouput/Sec
- And more!

You select whether to show response times for specific scenarios, the entire run, different load levels, etc. The results are available during and after the test in easy-to-read reports.

Detailed, Easy-to-Read Reports

Rational SiteLoad reports use color coding to pull your eye immediately to the load levels at which the site or individual pages began to lose performance. You can then determine where a specific overload is occurring so it can be corrected before going live.

The RealStatus Reports Included in Rational SiteLoad are:

Load report – shows the effect of user load on the performance of the entire site. This is calculated as percentages of the response-time criteria as the load ramps up.

Page response time report – shows load data and response times for the individual pages included in the test script, again relative to the response-time criteria.

Resource usage report – monitors the servers and shows the effect on them of various scenarios, page loads, or total user load.

Summary report – provides an overview of the results of the entire test; collates the details found in the specific reports.

Lower Launch Risks

Rational SiteLoad gives you the data-intensive advantages of a high-end testing tool in a fun, easy-to-use application that will allow you to thoroughly test your new site or Internet application — even on an incredibly tight launch schedule — before launch.

Rational SiteLoad takes the guesswork out of knowing whether or not your Web site can handle heavy traffic.

SPECIFICATIONS

Supported Enviroments

- Sun Solaris
- Red Hat Linux
- Windows NT 4.0
- Windows 2000

Hardware Requirements

- Pentium PC or greater recommended
- Minimum of 128 MB RAM
- Minimum of 25 MB disk space

Rational Software

Dual Headquarters

18880 Homestead Road
Cupertino, CA 95014

20 Maguire Road
Lexington, MA 02421

Toll-free: (800) 728-1212
e-mail: info@rational.com
Web: www.rational.com

International Locations:
www.rational.com/worldwide