

Improve quality control with enterprise test management.



Highlights

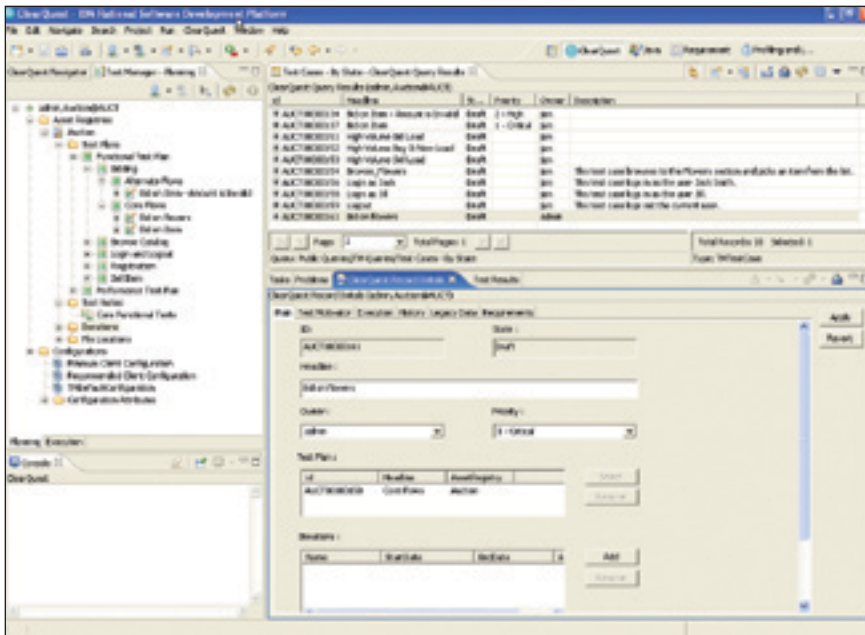
- ***Provides a single project view***
- ***Enables a configurable, enforceable process***
- ***Enables global project coordination***
- ***Provides an extensible test ecosystem***

Today's test teams are faced with time-to-market pressures, increased technology complexities, the complications of working with geographically distributed teams or outsourced service providers, tighter internal and external regulatory requirements, and communication gaps that can stall testing projects and prevent the efficient use of resources. Despite these challenges, testing teams still must ensure the on-time delivery of high-quality applications. To help them achieve this goal, IBM Rational® has integrated enterprise test management capabilities into IBM Rational ClearQuest®.

These capabilities include:

- *Global project coordination, which helps improve team collaboration across colocated and geographically distributed groups*
- *A management system to customize and enforce test processes, which allows teams to extensively customize forms, fields and workflows, and to leverage electronic signature support for process sign-offs*
- *An extensible test management system, which enables your business to cost-effectively manage an entire test lab using Rational, open-source and third-party test automation tools*

- *Integrated enterprise test management support, which provides the test team with a single view of the entire test or development project*



Single project view: Eclipse, Microsoft Windows® and Web clients for test project tracking

Provides a single, comprehensive view of the software project

With IBM Rational ClearQuest as the hub of software development lifecycle management, your development and test teams can now see a complete view of the entire development project—including test and quality metrics. This helps enable your team to more thoroughly assess the quality of a software application as it is being tested—making quick work of determining its readiness for deployment or delivery. Built-in test planning, coverage and defect reports turn data into information that helps your business make informed go-live decisions. The integration of test cases and test results with requirements, code and defects helps to ensure more thorough

testing of business requirements, controlled change and managed prioritization of the defect repair and regression test process.

Whether Rational ClearQuest software is used across your test and quality assurance (QA) teams or across your entire IT organization, you'll be able to effectively manage all test, defect and change activities with a single enterprise scalable, configurable management system.

Enables configurable, enforceable quality processes

Enforcement of your quality policies and processes is essential to the success of your project and critical for compliance with internal and

external regulatory requirements. With Rational ClearQuest software, you'll have unparalleled flexibility to customize the forms, fields and workflow used to manage and capture data for your testing projects. ClearQuest's extensive workflow customization capabilities help you to define and enforce:

- *How test cases move through the lifecycle*
- *The data that is required as test cases are captured*
- *The approval process and sign-offs that are necessary to meet your quality policies*

Using Rational ClearQuest capabilities for electronic signature support and full audit trails of test changes, you'll be more prepared to meet the needs of quality and software development process audits.

Establishes an extensible test management ecosystem

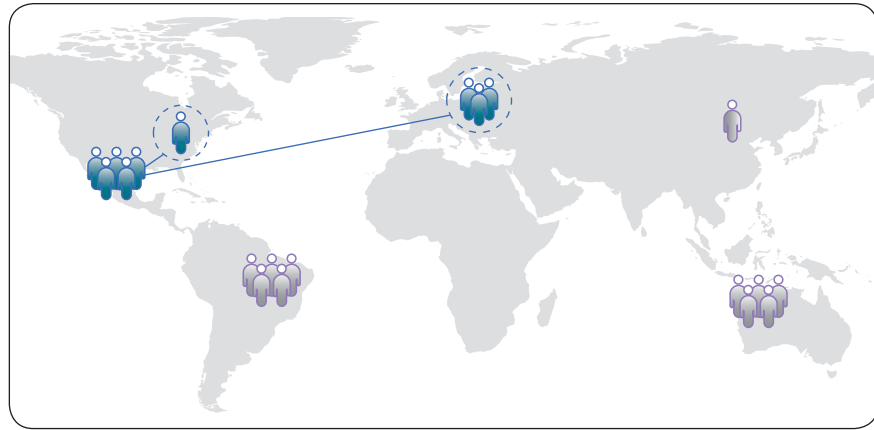
With Rational ClearQuest, you'll have more than a test management system, you'll have an extensible test management ecosystem that can manage tools and data from Rational, open-source and third-party test automation tool vendors. The benefit is a more flexible test management system, which helps lower the cost of test lab management and improves your flexibility to leverage tools and data from multiple test tool vendors.

Rational ClearQuest tightly integrates with IBM Rational Manual Tester, IBM Rational Functional Tester and IBM Rational Performance Tester for execution and management of tests and results created with any of Rational software's Eclipse platform-based test automation tools. Rational's support of a common Eclipse environment-based platform allows testers and developers to easily move between management and automation tools.

Open-source tools, such as JUnit and Eclipse Test Performance and Tooling Platform (TPTP) solutions, can also be integrated into the ClearQuest test management ecosystem. Using the Eclipse TPTP standard, third-party test automation tool providers can extend their tools to fit into the Rational ClearQuest test management ecosystem. SPI Dynamics QAInspect software—which provides integrated functional and security testing—and Ring-Zero extensions—which assist in the execution of third-party tools—are two examples of vendor tools that extend the Rational ClearQuest test ecosystem.

Coordinates global test projects

IBM Rational ClearQuest software helps enable you to manage geographically distributed testing projects, so that you can leverage



Rational ClearQuest enables development teams to access resources that are not locally available.

talent wherever it may be. Mobile, colocated and distributed testing teams can collaborate to rapidly complete the software test and validation process. Through Web-based access to test plans, results and quality metrics, you can effectively maintain oversight of complex, distributed testing projects. Integration with IBM Rational ClearQuest MultiSite software enables deeper sharing of test assets for projects distributed across multiple locations and time zones.

Meets diverse customer needs by offering package flexibility

Because Rational ClearQuest software is a management system that coordinates lifecycle activities, it is available in different packages to meet different practitioners', teams' and departments' needs.

For testing teams, Rational ClearQuest for test and defect management and Rational automation tools for functional and manual testing are packaged together in the solution bundle called IBM Rational ClearQuest and Functional Testing, which is described below. This offering provides independent test and validation teams a full set of solutions to automate the management and testing of a wide variety of applications.

Rational ClearQuest software is also available as part of the IBM Rational Team Unifying Platform™ solution or as a stand-alone solution. The Team Unifying Platform solution allows teams to snap in Rational or third-party-provided test automation tools.



IBM Rational ClearQuest and Functional Testing bundled offering

This is a comprehensive bundle that offers testing teams an integrated solution for defect management, test management, and automated and manual functional software testing. It provides testers with a single solution to manage tests, defects and project change. It is designed for colocated or globally distributed testing teams that need to manage large-scale, complex testing projects of software systems developed with both legacy and modern technologies. The IBM Rational ClearQuest and Functional Testing bundle consists of the following products:

- *IBM Rational ClearQuest software. This solution is for test, defect and change management, and it integrates with Rational, open-source and third-party test automation tools. Rational ClearQuest change management products help manage the software lifecycle more effectively. Automated workflows control and enforce development processes—from requirements definition through production.*

- *IBM Rational Functional Tester Plus software. Combining IBM Rational Functional Tester and IBM Rational Robot products, the cost-effective Rational Functional Tester Plus solution provides testers with a comprehensive functional, GUI and regression testing solution. This allows users to test a wide variety of software applications, including Java™; Java 2, Enterprise Edition (J2EE); Web, HTML; Web services; Microsoft® .NET WinForms and WebForms; Microsoft Visual Basic and many other thick-client technology-based applications.*

For additional information

To learn more about any of the IBM Rational enterprise test management solutions discussed in this solution sheet, visit:

ibm.com/software/rational/offerings/testing/manage/index

© Copyright IBM Corporation 2006

IBM Corporation
Software Group
Route 100
Somers, NY 10589
U.S.A.

Produced in the United States of America
06-06
All Rights Reserved

ClearQuest, IBM, the IBM logo, the On Demand Business logo, Rational and Team Unifying Platform are trademarks of International Business Machines Corporation in the United States, other countries or both.

Java and all Java-based trademarks are trademarks of Sun Microsystems, Inc. in the United States, other countries, or both.

Microsoft and Windows are trademarks of Microsoft Corporation in the United States, other countries or both.

Other company, product and service names may be trademarks or service marks of others.

The information contained in this documentation is provided for informational purposes only. While efforts were made to verify the completeness and accuracy of the information contained in this documentation, it is provided "as is" without warranty of any kind, express or implied. In addition, this information is based on IBM's current product plans and strategy, which are subject to change by IBM without notice. IBM shall not be responsible for any damages arising out of the use of, or otherwise related to, this documentation or any other documentation. Nothing contained in this documentation is intended to, nor shall have the effect of, creating any warranties or representations from IBM (or its suppliers or licensors), or altering the terms and conditions of the applicable license agreement governing the use of IBM software.