

Installing Rational Suite

VERSION: 2001.03.00

PART NUMBER: 800-023718-000

support@rational.com
<http://www.rational.com>

Rational®
the e-development company™

IMPORTANT NOTICE

COPYRIGHT

Copyright ©1998-2000, Rational Software Corporation. All rights reserved.

Part Number: 800-023718-000

Version Number: 2000.03..00

PERMITTED USAGE

THIS DOCUMENT CONTAINS PROPRIETARY INFORMATION WHICH IS THE PROPERTY OF RATIONAL SOFTWARE CORPORATION ("RATIONAL") AND IS FURNISHED FOR THE SOLE PURPOSE OF THE OPERATION AND THE MAINTENANCE OF PRODUCTS OF RATIONAL. NO PART OF THIS PUBLICATION IS TO BE USED FOR ANY OTHER PURPOSE, AND IS NOT TO BE REPRODUCED, COPIED, ADAPTED, DISCLOSED, DISTRIBUTED, TRANSMITTED, STORED IN A RETRIEVAL SYSTEM OR TRANSLATED INTO ANY HUMAN OR COMPUTER LANGUAGE, IN ANY FORM, BY ANY MEANS, IN WHOLE OR IN PART, WITHOUT THE PRIOR EXPRESS WRITTEN CONSENT OF RATIONAL.

TRADEMARKS

Rational, Rational Software Corporation, the Rational logo, Rational the e-development company, ClearCase, ClearCase Attache, ClearCase MultiSite, ClearDDTS, ClearQuest, DDTS, Object Testing, Object-Oriented Recording, Objectory, PerformanceStudio, PureCoverage, PureDDTS, PureLink, Purify, Purify'd, Quantify, Rational Apex, Rational CRC, Rational Rose, Rational Summit, Rational Visual Test, Requisite, RequisitePro, SiteCheck, SoDA, TestMate, and The Rational Watch are trademarks or registered trademarks of Rational Software Corporation in the United States and in other countries. All other names are used for identification purposes only, and are trademarks or registered trademarks of their respective companies.

Microsoft, the Microsoft logo, Active Accessibility, Active Channel, Active Client, Active Desktop, Active Directory, ActiveMovie, Active Platform, ActiveStore, ActiveSync, ActiveX, Ask Maxwell, Authenticode, AutoSum, BackOffice, the BackOffice logo, BizTalk, Bookshelf, Chromeffects, Clearlead, ClearType, CodeView, Computing Central, DataTips, Developer Studio, Direct3D, DirectAnimation, DirectDraw, DirectInput, DirectMusic, DirectPlay, DirectShow, DirectSound, DirectX, DirectXJ, DoubleSpace, DriveSpace, FoxPro, FrontPage, Funstone, IntelliEye, the IntelliEye logo, IntelliMirror, IntelliSense, J/Direct, JScript, LineShare, Liquid Motion, the Microsoft eMbedded Visual Tools logo, the Microsoft Internet Explorer logo, the Microsoft Office Compatible logo, Microsoft Press, the Microsoft Press logo, Microsoft QuickBasic, MS-DOS, MSDN, Natural, NetMeeting, NetShow, the Office logo, One Thumb, OpenType, Outlook, PhotoDraw, PivotChart, PivotTable, PowerPoint, QuickAssembler, QuickShelf, Realmation, RelayOne, Rushmore, SourceSafe, TipWizard, TrueImage, TutorAssist, V-Chat, VideoFlash, Virtual Basic, the Virtual Basic logo, Visual C++, Visual FoxPro, Visual InterDev, Visual J++, Visual SourceSafe, Visual Studio, the Visual Studio logo, Vizact, WebBot, WebPIP, Win32, Win32s, Win64, Windows, the Windows CE logo, the Windows logo, Windows NT, the Windows Start logo, and XENIX are trademarks or registered trademarks of Microsoft Corporation in the United States and other countries. FLEXIm and GLOBEtrotter are trademarks or registered trademarks of GLOBEtrotter Software, Inc. Licensee shall not incorporate any GLOBEtrotter software (FLEXIm libraries and utilities) into any product or application the primary purpose of which is software license management.

Portions Copyright ©1992-2000, Summit Software Company. All rights reserved.

PATENT

U.S. Patent Nos. 5,193,180 and 5,335,344 and 5,535,329 and 5,835,701. Additional patents pending.

Purify is licensed under Sun Microsystems, Inc., U.S. Patent No. 5,404,499.

GOVERNMENT RIGHTS LEGEND

Use, duplication, or disclosure by the U.S. Government is subject to restrictions set forth in the applicable Rational Software Corporation license agreement and as provided in DFARS 277.7202-1(a) and 277.7202-3(a) (1995), DFARS 252.227-7013(c)(1)(ii) (Oct. 1988), FAR 12.212(a) (1995), FAR 52.227-19, or FAR 227-14, as applicable.

WARRANTY DISCLAIMER

This document and its associated software may be used as stated in the underlying license agreement. Rational Software Corporation expressly disclaims all other warranties, express or implied, with respect to the media and software product and its documentation, including without limitation, the warranties of merchantability or fitness for a particular purpose or arising from a course of dealing, usage, or trade practice.

Contents

Preface	ix
Audience	ix
Other Resources	ix
Rational Suite Documentation Roadmap	x
Contacting Rational Technical Support	xi
1 Using This Guide	1
Install Guide Roadmap	2
Products in Each Rational Suite	3
2 Before You Install	5
Administering Licenses for Rational Software	6
Upgrading Rational Products	6
Administrator Privileges	7
Installing Multiple Rational Products	7
Rational Suite – Before You Install	7
System and Software Requirements	8
Initial Installation	10
Software Use	11
Installation Types	12
Installing Shared Files	13
When to Install Files Yourself	13
Rational ClearCase LT – Before You Install	14
Rational ClearQuest – Before You Install	14
System and Software Requirements	14
Administering Licenses for ClearQuest and ClearQuest Web	14
Initial Installation	15
ClearQuest Documentation	15
Rational RequisitePro – Before You Install	16
System and Software Requirements	16
Administering Licenses for RequisiteWeb	16
Initial Installation	17
Rational Rose – Before You Install	17
System and Software Requirements	17
Initial Installation	18
Rational Rose Documentation	18

Rational DevelopmentStudio–RealTime – Before You Install	19
System and Software Requirements	19
Initial Installation	19
DevelopmentStudio–RealTime Documents	19
Rational Testing Products – Before You Install	20
System and Software Requirements	20
Administering Licenses for Rational Testing Products	20
Initial Installation	20
Documentation for Rational Testing Products.	21
Rational Unified Process – Before You Install.	21
System and Software Requirements	21
Initial Installation	22
Rational Unified Process Documentation	22
3 Installing Rational Suite	23
Using the Rational Software Setup Program	23
Confirm Sufficient Free Space for the Installation	28
Other Dialog Boxes	28
Software Use	28
Update Shared Components	28
Upgrade Compatibilty	29
Possible Reboot Required	29
4 Preparing for and Installing Rational ClearCase LT	31
ClearCase LT Server Installation	31
System and Software Requirements.	32
Installation Procedures	34
To Evaluate ClearCase LT	34
To Evaluate ClearCase LT and a Rational Suite.	35
To Install Only ClearCase LT	36
To Install ClearCase LT and a Rational Suite.	37
To Install ClearCase LT After Installing a Rational Suite	38
To Upgrade from a Previous Version of Rational Suite and Install ClearCase LT	39
To Install ClearCase and a Rational Suite	40

5	After You Install	41
	Rational ClearCase LT – After You Install	41
	Configuring the ClearCase LT Server	41
	Running the Server Set-Up Wizard	41
	Importing Files into ClearCase	42
	Adjusting the Operating Environment	42
	Server Domains	42
	CLEARCASE_PRIMARY_GROUP environment variable	42
	Compatible Language Settings	43
	Additional Administrative Tasks	43
	Installing Internet Explorer	43
	Creating Views on Client and Server Hosts	43
	ClearCase LT Documentation	44
	Rational ClearQuest – After You Install	44
	ClearQuest Documentation	45
	Rational RequisitePro – After You Install	45
	RequisitePro Documentation	46
	Rational DevelopmentStudio–RealTime – After You Install	47
	Rational Suite DevelopmentStudio–RealTime Documentation	48
	Rational Testing Products – After You Install	48
	Rational Testing Documentation	49
6	Silent and Minimal Installations	51
	Overview of Silent Installations	51
	Recording a Software Installation	51
	Specifying a Post-Installation Command	52
	Performing a Silent Software Installation	53
	Preparing Multiple Response Files	53
	RSSetup Command Syntax	54
	License Key Administrator Command Line	56
	License Key Administrator Syntax	57
	Overview of Minimal Installations	57
	Configuring the Setup Program for Minimal Installations	58

7	Troubleshooting	59
	Installation Messages	59
	Support Information	60
8	Removing Rational Software	61
	Preparing to Remove Rational Software	61
	Additional Requirements	61
	Removing ClearCase LT Server	62
	Removing Rational Suite DevelopmentStudio–RealTime Edition	62
	Removing Rational Testing Products	62
	Removing the Rational Unified Process	63
	Removing Rational Software	63
	Index	65

List of Tables

Table 1	Install Roadmap.	2
Table 2	Rational Suite Requirements.	8
Table 3	Software Use Installation Choices.	11
Table 4	Installation Types.	12
Table 5	RequisitePro Requirements.	16
Table 6	Rational Rose Requirements.	18
Table 7	Rational Suite DevelopmentStudio–RealTime Requirements	19
Table 8	Rational Unified Process Requirements	21
Table 9	Installation Options	24
Table 10	License Options.	25
Table 11	ClearCase LT Requirements	32
Table 12	Additional Installations.	48
Table 13	RSSetup Command Parameters.	54
Table 14	Product Identifiers	55
Table 15	Licadmin Command Parameters.	57
Table 16	Silent Installation Messages	59

Preface

Installing Rational Suite provides you with the information you need to perform a typical installation of Rational Suite. Additional information about the products in Rational Suite is available in the individual product documentation, including installation options and product customizations.

Rational Suite delivers a comprehensive set of integrated tools that embody software engineering best practices and span the entire software development lifecycle. Rational Suite's unparalleled level of integration improves communication both within teams and across team boundaries, reducing development time and improving software quality.

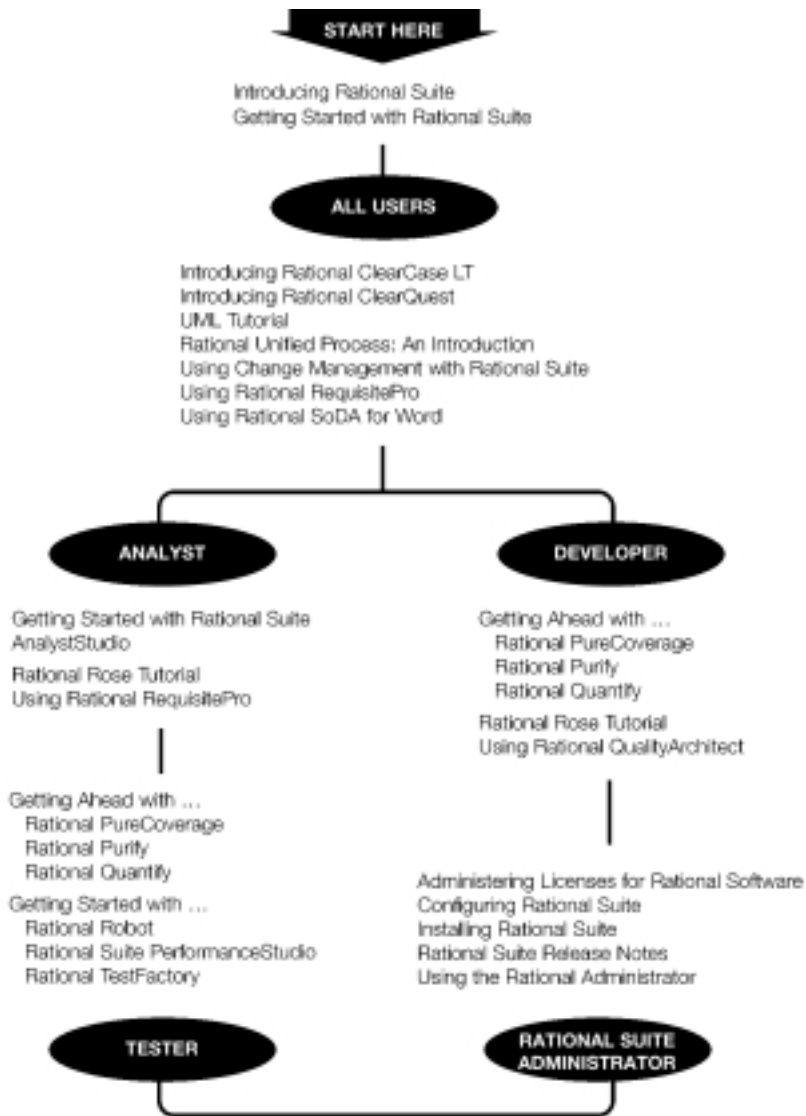
Audience

This guide is intended for anyone who is installing Rational Suite. It assumes a basic knowledge of Microsoft Windows and its conventions.

Other Resources

- Online Help is available for Rational Suite.
From a Suite tool, select an option from the **Help** menu.
- All manuals are available online, either in HTML or PDF format. The online manuals are on the Rational Solutions for Windows Online Documentation CD.
- To send feedback about documentation for Rational products, please send e-mail to techpubs@rational.com.
- For more information about Rational Software technical publications, see: <http://www.rational.com/documentation>.
- For more information on training opportunities, see the Rational University Web site: <http://www.rational.com/university>.

Rational Suite Documentation Roadmap



Contacting Rational Technical Support

If you have questions about installing, using, or maintaining this product, contact Rational Technical Support as follows:

Your Location	Telephone	Facsimile	E-mail
North America	(800) 433-5444 (toll free) (408) 863-4000 Cupertino, CA	(781) 676-2460 Lexington, MA	support@rational.com
Europe, Middle East, Africa	+31 (0) 20-4546-200 Netherlands	+31 (0) 20-4545-201 Netherlands	support@europe.rational.com
Asia Pacific	+61-2-9419-0111 Australia	+61-2-9419-0123 Australia	support@apac.rational.com

Note: When you contact Rational Technical Support, please be prepared to supply the following information:

- Your name, telephone number, and company name
- Your computer's make and model
- Your operating system and version number
- Product release number and serial number
- Your case ID number (if you are following up on a previously-reported problem)

The Rational Software Setup program lets you perform standard and custom installations of Rational software products. This common install procedure installs Rational Suite editions as well as individual Rational Suite products.

This manual provides you with:

- Information needed to perform a typical installation of Rational Suite or a Rational Suite product.
- An overview of the general pre- and post-installation requirements for products is included on the Rational Solutions for Windows CD. This manual also refers to other documentation about customizing and configuring Rational products.
- Instructions for configuring a silent installation
- Instructions for configuring a minimal installation.
- Support information, including references to additional sources of information and help, in the *Preface* on page ix.

Install Guide Roadmap

Table 1 helps you navigate through this guide and directs you to other sources of information.

Table 1 Install Roadmap

To	See	Notes
Deploy an initial installation of Rational products	<ul style="list-style-type: none"> ▪ <i>Administering Licenses for Rational Software</i> to install and configure licenses either before or after installing the product. ▪ The product-specific requirements for an initial installation in <i>Before You Install</i> on page 5. ▪ <i>Installing Rational Suite</i> on page 23 for the installation procedure. ▪ The product-specific configuration requirements in <i>After You Install</i> on page 41. 	Read <i>Troubleshooting</i> on page 59 or the <i>Preface</i> on page ix if you see error messages or encounter problems during installation.
Deploy Rational products using a silent installation	<ul style="list-style-type: none"> ▪ <i>Administering Licenses for Rational Software</i> to install and configure licenses either before or after installing the product. ▪ <i>Silent and Minimal Installations</i> on page 51 for the silent installation procedure. ▪ The product-specific requirements for an initial installation in <i>Before You Install</i> on page 5. ▪ <i>Installing Rational Suite</i> on page 23 for the installation procedure. 	Read <i>Troubleshooting</i> on page 59 or the <i>Preface</i> on page ix if you see error messages or encounter problems during installation.
Deploy Rational products using a minimal installation	<ul style="list-style-type: none"> ▪ <i>Administering Licenses for Rational Software</i> to install and configure licenses either before or after installing the product. ▪ <i>Silent and Minimal Installations</i> on page 51 for the minimal installation procedure. ▪ The product-specific requirements for an initial installation in <i>Before You Install</i> on page 5. ▪ <i>Installing Rational Suite</i> on page 23 for the installation procedure. 	Read <i>Troubleshooting</i> on page 59 or the <i>Preface</i> on page ix if you see error messages or encounter problems during installation.

Table 1 Install Roadmap

To	See	Notes
Upgrade a Rational product	<ul style="list-style-type: none"> ▪ The product-specific sections in the <i>Rational Suite Release Notes</i> and <i>Configuring Rational Suite</i> for upgrade requirements. ▪ <i>Removing Rational Software</i> on page 61 if the release notes direct you to remove an earlier version of the product. 	Read <i>Troubleshooting</i> on page 59 or the <i>Preface</i> on page ix if you see error messages or encounter problems during installation.
Install additional Rational software and third-party components	<ul style="list-style-type: none"> ▪ The product-specific installation and configuration requirements in <i>After You Install</i> on page 41. ▪ <i>Installing Rational Suite</i> on page 23 for the installation procedure. 	Read <i>Troubleshooting</i> on page 59 or the <i>Preface</i> on page ix if you see error messages or encounter problems during installation.
Remove a Rational product from your system	<ul style="list-style-type: none"> ▪ <i>Administering Licenses for Rational Software</i> to move license keys to another system or return license keys to Rational Software. ▪ <i>Removing Rational Software</i> on page 61 for the removal procedure. 	Read <i>Troubleshooting</i> on page 59 or the <i>Preface</i> on page ix if you see error messages or encounter problems during installation.

Products in Each Rational Suite

Rational Suite is an integrated set of software development tools, combined with the Rational Unified Process. Rational Suite is available in several editions, each tailored to the needs of a specific organization or user.

The following table lists the products in each Rational Suite.

Rational Tool	Analyst Studio	Development Studio (Windows or UNIX)	Development Studio - RealTime Edition	Test Studio	Team Unifying Platform	Enterprise
Rational Unified Process	X	X	X	X	X	X
Rational RequisitePro	X	X	X	X	X	X
Rational ClearQuest	X	X	X	X	X	X
Rational SoDA for Word (Windows) or for FrameMaker (UNIX)	X	X	X	X	X	X
Rational ClearCase LT	X	X (Windows)	X	X	X	X
Rational TestManager	X	X	X	X	X	X
Rational Rose	Data Modeler Edition	Enterprise Edition	RealTime Edition			Enterprise Edition
Rational Robot				X		X
Rational TestFactory				X		X
Rational PureCoverage		X	X	X		X
Rational Purify		X	X	X		X
Rational Quantify		X	X	X		X
Rational Quality Architect		X (Windows)				X

This chapter provides an overview of requirements for installing Rational Suite and individual Rational Suite products. Each product section includes information about system and software requirements, initial installations, specific documentation, and in a few cases, special notes regarding licenses.

Before you read specific product sections, read the sections *Administering Licenses for Rational Software*, *Upgrading Rational Products*, *Administrator Privileges*, *Installing Multiple Rational Products*, and *Rational Suite – Before You Install*. The information in these sections apply to Rational Suite and Rational Suite products.

This chapter includes the following topics:

- *Administering Licenses for Rational Software* on page 6
- *Upgrading Rational Products* on page 6
- *Administrator Privileges* on page 7
- *Installing Multiple Rational Products* on page 7
- *Rational Suite – Before You Install* on page 7
- *Rational ClearCase LT – Before You Install* on page 14
- *Rational ClearQuest – Before You Install* on page 14
- *Rational RequisitePro – Before You Install* on page 16
- *Rational Rose – Before You Install* on page 17
- *Rational DevelopmentStudio–RealTime – Before You Install* on page 19
- *Rational Testing Products – Before You Install* on page 20
- *Rational Unified Process – Before You Install* on page 21

Administering Licenses for Rational Software

Although you can request and install licenses before or after installing Rational products, Rational recommends that you install floating license keys on a FLEXlm License Server before you install Rational software. Rational also recommends that you use the Rational Software Setup program to specify the license server or install node-locked license keys when you are ready to install Rational products on client systems.

The *Administering Licenses for Rational Software* manual describes the web-based license manager AccountLink, the Rational License Key Administrator, and the Rational Common Licensing model. This manual also provides instructions and troubleshooting information for acquiring, installing, and configuring licenses.

Note: If you plan to upgrade the license server, and this server has other Rational products installed on its system, you must either remove the Rational products from the system or upgrade the Rational products to the current release. Older Rational products may not work with an upgraded license server if they are on the same system.

Upgrading Rational Products

Read the product-specific sections in the *Rational Suite Release Notes* for upgrade requirements, such as whether you can install the current version of a Rational product over an earlier version. For information about the order in which you should upgrade products and convert schemas and data, see *Configuring Rational Suite* and the *Rational Suite Release Notes*.

Note: Rational has merged Rational Suite PerformanceStudio with Rational TestStudio, and therefore, no longer upgrades PerformanceStudio. You must remove Rational Suite PerformanceStudio before you can install any Rational Suite product on the same system. If the Rational Software Setup program detects PerformanceStudio on your system, it asks you whether you want the Setup program to remove the Suite from your system. When the program removes PerformanceStudio, it also removes the FLEXlm Server software. If you use the same system to manage your license keys, you must reinstall the FLEXlm Server software.

Administrator Privileges

To use the Rational Software Setup program on a Windows NT or 2000 system, you must have Windows NT or 2000 administrator privileges on the local system. Log in as one of the following users:

- local administrator
- member of the local administrator's group
- domain administrator who is a member of the local administrator's group

Installing Multiple Rational Products

If you install individual Rational products and a Rational Suite on the same system, Rational products, except Rational RequisiteWeb, ClearQuest Web and ClearCase LT Server, will obtain a Suite license first. For Web products and ClearCase LT Server to obtain a Suite license first, you must change their license use order. To change the order in which Rational products obtain licenses, see *Licensing Multiple Suites and Point-Products* on page 32 in the *Administering Licenses for Rational Software* manual or the online Help in the Rational License Key Administrator. The License Key Administrator is automatically installed with the FLEXlm License Server software and Rational software.

Rational Suite – Before You Install

The following sections provide steps you should perform and information you must prepare before you install Rational Suite editions and Rational Suite products. For important information about upgrading Rational Suite products or installing software on the same system where you have older Rational software, see *Upgrading Rational Products* on page 6.

System and Software Requirements

Table 2 describes the system and software requirements for installing Rational Suite and Rational Suite products.

Table 2 Rational Suite Requirements

Item	Minimum Requirements
Operating System	<p>Microsoft Windows 2000. Windows NT 4.0, SP6a. Windows 95 SR2 and updates. Windows 98 2nd edition. Windows Millenium 2nd edition. “Whistler” Beta (new version of NT). Win64 (for applicable products).</p> <p>Note:</p> <ul style="list-style-type: none"> ▪ Rational Suite DevelopmentStudio - RealTime Edition does not support Windows 95 and 98, Windows Me, and “Whistler” Beta. Rose RealTime does not support Windows 95 and 98. ▪ ClearCase LT, RequisitePro, Rose, and the Rational Unified Process do not support “Whistler” Beta. ▪ Rational Suite products may support additional Service Releases and Service Packs. See the product-specific sections in this chapter.
Processor	<p>166 MHz or higher; 300 MHz or higher is recommended.</p> <p>See the product-specific sections for lower or higher minimums.</p>
Memory	<p>64 MB or higher; 128 MB is recommended.</p> <p>For Rational Rose, memory requirements increase with the size of the model.</p> <p>RequisitePro recommends 256 MB for projects with more than 50,000 requirements.</p>
Browser	<p>Microsoft Internet Explorer 5.01 or 5.5, or Netscape Navigator 4.7 or 6.0.</p> <p>Note:</p> <ul style="list-style-type: none"> ▪ You must install Internet Explorer 5.x to use some Rational Software products. However, you are not required to use it for your browser. ▪ Rational Suite products may support additional IE and Netscape Navigator releases. See the product-specific sections in this chapter.

Table 2 Rational Suite Requirements

Item	Minimum Requirements
Disk space: <ul style="list-style-type: none"> ▪ Enterprise Suite (no tutorial) ▪ Enterprise Suite (with tutorial) ▪ AnalystStudio ▪ DevelopmentStudio ▪ DevelopmentStudio - RealTime Edition ▪ TestStudio ▪ DevelopmentStudio on UNIX ▪ Developer Kit ▪ Web Components 	825 MB or higher. 875 MB or higher. 650 MB or higher. 775 MB or higher. 775 MB or higher. 675 MB or higher. 100 MB or higher. 175 MB or higher. 350 MB or higher.
Monitor	An SVGA-compatible display (256 or more colors) with the resolution set at 800 X 600 pixels.
Mouse/pointing device	Microsoft Mouse or compatible pointing device with at least 2 buttons.
Automated License Key Requests	Internet connection required for license requests.
SoDA and RequisitePro	Microsoft Word 97 SR2, or Word 2000 SR1.
Java	JDK, IBM version 1.17 or Sun Microsystems versions 1.22 or 1.30, with the following servers: Windows 2000, Solaris 2.x, Red Hat 6.x release of Linux.
Windows Terminal Server	All Rational Suite products can be installed and run on a Windows Terminal Server console. SoDA can run on a remote terminal.
Dual Boot Systems	Installation of Rational Suite on dual-boot systems is not supported.
Rational Documentation	Adobe Acrobat Reader 4.x or higher to read online PDF files.

For **Windows 2000 Professional**, Microsoft recommends:

- Pentium 200 or better processor
- 64 MB of RAM minimum
- At least 1 GB hard drive space available

For **Windows 2000 Server**, Microsoft recommends:

- Pentium II 233 MHz or better processor
- 128 MB of RAM minimum
- At least 2 GB hard drive space available

Initial Installation

Here is a list of general requirements for installing Rational Suite and Rational Suite products for the first time at your site.

- 1 Install the Rational license keys before you install Rational products. Have your FLEXlm License Server setup and running or install node-locked licenses using the Rational Software Setup program. Read the product's *Before You Install* section for any special licensing requirements. For Rational RequisiteWeb and ClearQuest Web, refer to the RequisitePro and ClearQuest sections.

See the *Administering Licenses for Rational Software* manual for more information about licenses, including the procedure for obtaining a license key.

Note: You need to install Rational licenses to use Rational products.

- 2 See *Configuring Rational Suite* to plan your Rational Suite configuration.
- 3 Make sure you have administrator privileges before installing Rational products. Read the section *Administrator Privileges* on page 7 if you have not read it already.
- 4 Make sure that you have a current backup of your Registry and system directories.
- 5 Ensure that other windows programs are not running.
- 6 Turn off all virus protection software. These programs often run in the background and interfere with the installation and file decompression process.
- 7 Turn off any user interface managers or desktop environments that run on top of Microsoft Windows.
- 8 Change to a standard VGA video driver while Rational Setup is running, or disable video features such as virtual screens or screen switching.
- 9 Change to a standard mouse driver, or disable special mouse features that perform tasks such as leaving pointer trails or changing pointer sizes.
- 10 Make certain that your system meets the minimum system requirements.
- 11 The Rational Software Installation program uses C:\Program Files\Rational as the default install path. The program installs software system files in the Windows directory or Windows systems directory.

If your C:\ drive lacks sufficient free disk space, you may either specify another drive during the installation procedure or make space available on the default drive. The Software Setup program will report the amount of space required on all drives for your installation.

Note: If you have already installed a Rational product, you cannot select an alternate location for another Rational product installation.

Software Use

The Rational Software Setup program lets you install Rational Suite for use by a client, administrator, or evaluator. During the setup program, you select the installation option based on the way you will use Rational Suite on this system. See the table below.

Table 3 Software Use Installation Choices

User	Description	After Installation
Client	<p>Choose this option if you do not need to administer Rational Suite software.</p> <p>Installs software on your machine for use in a networked team environment. An administrator at your site will set up a Rational Project on the network for your team's use.</p>	<p>After you choose this option and complete the installation, start any of the Rational Test components and enter the path of the Rational Project in the login dialog box.</p>
Administrator	<p>Choose this option if users of client software depend on you to set up and manage the team's projects and databases.</p> <p>In addition to installing client software, this option installs tools so you can create, move, and upgrade Rational Projects, Rational ClearQuest schema repositories, and ClearQuest user databases.</p>	<p>After you choose this option and complete the installation, use the Rational Administrator to create both a Rational Project and a ClearQuest Master Schema database.</p>

Table 3 Software Use Installation Choices (continued)

Evaluator	<p>Choose this option if you want to do a minimum amount of configuration work before using the product. Choosing this option does not restrict your use of the software.</p> <p>Installs software on your machine and creates a sample Rational Project for use in a standalone environment.</p>	<p>After you choose this option and complete the installation, start any of the Rational Test components and select the Sample Project in the login dialog box.</p>
-----------	---	---

Installation Types

The Rational Software Setup program provides you with several installation types, allowing you to install the configuration most appropriate for your system. The following table describes each type.

Table 4 Installation Types

Type	Description
Typical	<ul style="list-style-type: none">▪ Installs the most commonly used features for a product.▪ Use this option for standard installations.
Custom/Full	<ul style="list-style-type: none">▪ Allows you to add or remove product features for installation.▪ Defaults to all features in a Typical installation.▪ Use this option to install Web Server Components on a Web Server for RequisiteWeb, ClearQuestWeb, and for all Suites in which these products appear.
Compact/Laptop	<ul style="list-style-type: none">▪ Installs a subset of the standard configuration. May omit optional files, including online documentation or online help. To find out which files will be installed, read the product's release notes.▪ Use this option for installations on systems with limited disk space.

Table 4 Installation Types

Type	Description
Minimal	<ul style="list-style-type: none">▪ Installs the files needed to run the program from a network location.▪ Use this option to run the program from a centrally managed location. <p>Note:</p> <ul style="list-style-type: none">▪ This installation type is available to users when you decompress the product files in a network location. To configure a minimal installation type, see <i>Overview of Minimal Installations</i> on page 68.▪ If you need to upgrade your minimal installation, see the <i>Rational Suite Release Notes</i> for guidelines.

Installing Shared Files

The Rational Software Setup program installs some shared components, software provided by a company other than Rational. They are potentially available to other applications on your system. Setup installs the U.S. English version of these files. It does not overwrite newer file versions.

If the Setup program needs to update shared components it displays a list of the shared components that require updates. The files listed must be installed on your system before the installation can proceed.

When to Install Files Yourself

In general, we recommend that you allow the installation procedure to install shared files for you. In the following circumstances, you may want to install the files yourself:

- You are using a U.S. English system, but installing new files may invalidate your current environment. In this case, you need to determine how to correct your environment so that you can run existing tools and the Rational products you want to install.
- Your site may mandate that you obtain shared files directly from the source, for example, from Microsoft, rather than using files supplied by a third party. Or your site may prohibit end users from installing shared components.
- Rational supplies U.S. English versions of shared files. You may want to install equivalent files that are localized to your language.

The checkbox, **Replace files with newer versions in English**, is enabled when you have installed earlier versions of the files that are localized to a non-U.S. English language. If you select this checkbox, the U.S. English versions of the files will replace your versions. If you clear this checkbox, you can save and print the list of files that need to be updated. You will need to update the files yourself.

- There may be a later version of the files available. Rational products should work with the supplied version of shared files or any later versions.

Rational ClearCase LT – Before You Install

For information about installing ClearCase LT, see *Preparing for and Installing Rational ClearCase LT* on page 31.

Rational ClearQuest – Before You Install

The following sections provide general requirements you must perform before you install ClearQuest.

System and Software Requirements

For the system and software requirements, see the ClearQuest readme.html file.

Administering Licenses for ClearQuest and ClearQuest Web

If you purchase Rational ClearQuest with a node-locked license, your ClearQuest Web access is limited to the ability to submit defects and to run one query (defined by the ClearQuest Administrator).

To get full ClearQuest Web access, you need to purchase floating licenses and install the floating license keys on a Web Server. To change the order in which ClearQuest Web requests licenses, see *Prioritizing Licenses on Your System (License Usage Mapper)* on page 33 in the *Administering Licenses for Rational Software* manual.

Initial Installation

Here is a list of general requirements for installing ClearQuest for the first time at your site.

- 1 Install the Rational license keys before you install Rational ClearQuest. Have your FLEXlm License Server setup and running. Specify the license server or install node-locked license keys in the Rational Software Setup program. See the *Administering Licenses for Rational Software* manual for more information about licenses, including the procedure for obtaining a license key.

Note: You need to install Rational licenses to use Rational products.

- 2 Set up your database product. To use ClearQuest, you need to create a user database to store defects for your testing efforts. A ClearQuest user database contains all user data and a copy of the schema associated with the database.

Before you attach a ClearQuest database to the Rational Project, you need to decide what type of ClearQuest user database to use. Note that this database is different from the Rational Test database which also becomes a part of the Rational Project. (You create the Rational Test database when you install Rational TestStudio or other Rational testing products.) For a summary of which type of database software to install, see *Installing Rational ClearQuest*.

- 3 Install ClearQuest on the administrator's workstation before installing ClearQuest on the client machines. Refer to Table 3 on page 11 for a description of the administrator and client Software Use options. See the *Administering Rational ClearQuest* guide for details on customizing ClearQuest.
- 4 Configure the ClearQuest databases (user databases and schema repository) and provide users with the information they need to connect to ClearQuest. To configure the installation, see the general requirements in *Rational ClearQuest – After You Install* on page 44.

ClearQuest Documentation

The initial installation section refers to the following ClearQuest documents, which you can find in the Rational Software documentation CD.

- *Installing Rational ClearQuest*
- *Rational ClearQuest Release Notes*: An HTML file that contains the most current system requirements information (including platform version support).
- *Administering Rational ClearQuest*: A guide on how to customize ClearQuest to meet your needs.

Rational RequisitePro – Before You Install

The following sections provide general requirements that you need before you install RequisitePro.

System and Software Requirements

Table 5 lists the system and software requirements for installing RequisitePro. If you do not see an item listed here, see Table 2 on page 8.

Table 5 RequisitePro Requirements

Item	Minimum Requirements
Operating Systems	Windows 2000 SR1. Windows NT 4.0, SP6a. Windows 95 OEM SR2. Windows 98 2nd edition. Windows Millenium 2nd edition.
Enterprise Database Requirements (optional)	Microsoft SQL Server 7.0 or higher; Oracle7 or Oracle8 server and client software -- (specifically, Oracle version 7.3.4 or higher).
Processor	200 MHz or higher.
Disk Space	96 MB.
Requirement Metrics Reporting	Microsoft Excel 97 SR2, or Excel 2000 SR 1.

Administering Licenses for RequisiteWeb

To get full Rational RequisiteWeb access, you need to purchase floating licenses and install the floating license keys on a Web Server. To change the order in which RequisiteWeb requests licenses, see *Prioritizing Licenses on Your System (License Usage Mapper)* on page 33 in the *Administering Licenses for Rational Software* manual.

Initial Installation

Here is a list of general requirements for installing RequisitePro and related components for the first time at your site.

- 1 Install the Rational license keys before you install Rational RequisitePro. Have your FLEXlm License Server setup and running. Specify the license server or install node-locked license keys in the Rational Software Setup program. See the *Administering Licenses for Rational Software* manual for more information about licenses, including the procedure for obtaining a license key.
Note: You need to install Rational licenses to use Rational products.
- 2 The RequisitePro installation requires specific versions of Microsoft files whether you are installing RequisitePro for the first time or upgrading RequisitePro from an earlier version. The Rational Software Setup program will install the files or you may choose to install the files yourself from other sources. For more information, see *Installing Shared Files* on page 13.
- 3 If you are an administrator who is responsible for setting up an Oracle or SQL Server database for RequisitePro, you must install the database configuration scripts. See *Installing Rational RequisitePro* for more information about installing these scripts with the **Custom/Full** Installation Type in the Rational Software Setup program.

RequisitePro Documentation

The initial installation section refers to the following RequisitePro document, which you can find in the Rational Software documentation CD.

- *Installing Rational RequisitePro*: A manual for installing Rational RequisitePro, with instructions for configuring Oracle and Microsoft SQL Server databases, Rational RequisiteWeb, and the Rational E-mail Reader for RequisitePro discussions.

Rational Rose – Before You Install

The following sections provide general requirements you must perform before you install Rational Rose. Note that there are no post-installation steps in *After You Install*.

System and Software Requirements

Table 6 lists the system and software requirements for installing Rational Rose. If you do not see an item listed here, see Table 2 on page 8.

Table 6 Rational Rose Requirements

Item	Minimum Requirements
Operating System	Windows 2000 RC1. Windows NT 4.0, SP3, SP4, SP5, SP6a. Windows 95, Retail Version SP1. Windows 95, OEM Version OSR 2.1. Windows 98. Windows Millenium 2nd edition.
Processor	Pentium-based 150 Mhz, PC-compatible system.
Disk Space	200 MB (100 Rose, 100 download/install)
VC++	Visual Studio 6.0
Rose J Add-in	JDK 1.1.6 or any of the major Java IDEs

Note:

- Rose requires DCOM under Windows 95. If you do not have DCOM on your Windows 95 system, the install will point you to the Microsoft web site to obtain the software.
- See the *Rational Rose Release Notes* for Add-In system and software requirements.

Initial Installation

Here is a brief list of general requirements for installing Rational Rose for the first time.

- 1 Install the Rational license keys before you install Rational Rose. Have your FLEXlm License Server setup and running. Specify the license server or install node-locked license keys in the Rational Software Setup program. See the *Administering Licenses for Rational Software* manual for more information about licenses, including the procedure for obtaining a license key.

Note: You need to install Rational licenses to use Rational products.

- 2 For instructions on backing up model and property files and path map variables before you install Rose for the first time, see the Rational Rose release notes.

Rational Rose Documentation

This section refer to the *Rational Rose Release Notes*, which you can find in the Rational Software documentation CD.

Rational DevelopmentStudio–RealTime – Before You Install

The following sections provide general requirements you need to know before you install Rational Suite DevelopmentStudio–RealTime Edition.

System and Software Requirements

Table 7 lists the system and software requirements for installing Rational Suite DevelopmentStudio–RealTime Edition. If you do not see an item listed here, see Table 2 on page 8.

Table 7 Rational Suite DevelopmentStudio–RealTime Requirements

Item	Minimum Requirements
Operating System	Windows NT 4.0, SP 5 or 6a. Windows 2000 or Windows 2000 SP1.
Development environment	Visual Studio 5 Visual Studio 6, SP3 or SP4

Initial Installation

Rational DevelopmentStudio-RealTime requires the following general pre-installation steps.

- 1 Install the Rational license keys before you install DevelopmentStudio-RealTime. Have your FLEXlm License Server setup and running. Specify the license server or install node-locked license keys in the Rational Software Setup program. See the *Administering Licenses for Rational Software* manual for more information about licenses, including the procedure for obtaining a license key.

Note: You need to install Rational licenses to use Rational products.

- 2 For detailed information on pre-installation requirements for the Rational Rose RealTime point-product, see “Before You Install,” in the *Installation Guide - Rational Rose RealTime, Windows*.

Note: If you already have ClearCase 4.0 installed, the Rational Suite DevelopmentStudio install will leave ClearCase 4.0 in place and not install ClearCase LT.

DevelopmentStudio–RealTime Documents

The initial installation section refers to *Installation Guide - Rational Rose RealTime, Windows*, which you can find in the Rational Software documentation CD.

Rational Testing Products – Before You Install

This section provides general requirements you need to perform before you install Rational Testing products and their related components.

System and Software Requirements

See the “Hardware and Software Requirements” section in *Installing Rational Testing Products*.

Administering Licenses for Rational Testing Products

This section describes the types of licenses you need to run Rational Testing products.

- Rational Suite TestStudio requires floating licenses.
- To record GUI test scripts on multiple computers, you need to install Rational Robot on each computer. A separate node-locked license is required for Robot-only installations.

For more information about Rational Software licensing, see *Administering Licenses for Rational Software*.

Initial Installation

The section describes general requirements for installing Rational Testing products for the first time.

- 1 Install the Rational license keys before you install Rational Testing products. Have your FLEXlm License Server setup and running. Specify the license server or install node-locked license keys in the Rational Software Setup program. See the *Administering Licenses for Rational Software* manual for more information about licenses, including the procedure for obtaining a license key.

Note: You need to install Rational licenses to use Rational products.

- 2 Make sure that all computers have TCP/IP installed. If you have updates to your network software that you have not installed, be sure to install the upgrades.
- 3 Verify that the Windows computers are communicating with each other. (If you have any problems, see your network administrator.)
- 4 Determine a database type for ClearQuest. For more information, see “About Rational ClearQuest Databases” and “Determining a Database Type for ClearQuest” in *Installing Rational Testing Products*.

- 5 Determine the role each computer will play in testing—whether it will be a Local (Suite) or an Agent computer. For information, see “Using Local and Agent Computers” in *Installing Rational Testing Products*.
- 6 To play back a TestStudio script that tests Oracle, Sybase, or SQL Server databases on a Local or Agent computer, you must install the appropriate database client software before you install TestStudio software. For information, see “Installing Rational Suite TestStudio Client Software” in *Installing Rational Testing Products*.
- 7 Determine the kind of network you will be using, either Ethernet or Token Ring. You will need to know this when you install the Rational Test network driver. For information, see “Installing the Rational Test Network Driver” in *Installing Rational Testing Products*.
- 8 Review the list of protocols supported when you play back a test script on an Agent computer in TestManager. See “SQL Client Server Software” in *Installing Rational Testing Products*.

Documentation for Rational Testing Products

The initial installation section refers to the following documents, which you can find in the Rational Software documentation CD.

- *Installing Rational Testing Products*
- *Using the Rational Administrator*

Rational Unified Process – Before You Install

The following sections provide general requirements you need before you install the Rational Unified Process. Note that there are no post-installation steps in *After You Install*.

System and Software Requirements

Table 7 lists the system and software requirements for installing the Rational Unified Process. If you do not see an item listed here, see Table 2 on page 8.

Table 8 Rational Unified Process Requirements

Item	Minimum Requirements
Memory	32 MB RAM
Disk Space	50 MB

Table 8 Rational Unified Process Requirements

Item	Minimum Requirements
Browser	<ul style="list-style-type: none">▪ Microsoft Internet Explorer 4.0 with SP1 or later▪ Netscape Navigator 4.x

Initial Installation

The Rational Unified Process requires the following general pre-installation steps.

- Make sure you have administrator privileges before installing Rational products. Read the section *Administrator Privileges* on page 7 if you have not read it already.
- To install the Rational Unified Process, select a typical setup configuration.
- To install the Rational Unified Process with IBM e-Business extensions, select a Custom/Full setup configuration. For more information about the IBM e-Business extensions, see *Installing the Rational Unified Process*.
- To install the Rational Unified Process with Microsoft.NET extensions, select a Custom/Full setup configuration. For more information about the Windows DNA extensions, see *Installing the Rational Unified Process*.

Rational Unified Process Documentation

The initial installation section refers to *Installing the Rational Unified Process*, which you can find in the Rational Software documentation CD.

This chapter describes a Typical installation of Rational Suite and individual Rational products. If you are upgrading your Rational products, refer to the *Rational Suite Release Notes* and *Configuring Rational Suite* for more information about upgrade requirements.

Using the Rational Software Setup Program

The Rational Software Setup program guides you through a typical installation. Rational recommends that you install floating license keys on the FLEXlm License Server before you install Rational Suite products. If you have purchased node-locked licenses, Rational recommends that you use the Rational Software Setup program instead of the Rational License Key Administrator to install node-locked keys. See the *Administering Licenses for Rational Software* manual for more information about requesting and installing license keys.

Warning: Interrupting an installation may leave your system in an indeterminate state. If you try to close the Rational Software Setup window during the installation, the Setup wizard asks you to confirm that you want to exit from the incomplete installation.

1 If you are installing on a Windows NT or Windows 2000 system, make sure you have administrator privileges on the local system. For more information about administrator privileges, see *Administrator Privileges* on page 7.

2 Insert the Rational Solutions for Windows CD into your system's CD drive.

The Rational Software Setup wizard starts automatically.

If autorun is disabled on your system, click **Start > Run** and enter *drive*: \Setup.exe where *drive* is the letter of the CD drive.

3 The **Rational Software Setup** dialog box provides general information about the software installation.

Click **Browse** to review Rational product information. To view this product gallery, you must have a Web browser.

If you do not have Rational Suite PerformanceStudio on your system, skip Step 4.

- 4 If the Setup program detects Rational Suite PerformanceStudio on your system, you must remove PerformanceStudio before you can install a Rational Suite product. Rational has merged this Suite with Rational TestStudio, and therefore, no longer upgrades PerformanceStudio. You can direct the Setup program to remove PerformanceStudio or cancel the Setup program.

Note: The Setup program also removes the FLEXlm License Server software that was installed with PerformanceStudio. If you have been using the Server software to manage your license keys, you can either reinstall the FLEXlm Server software on the same system (the license key file remains on the system) or install the Server software and a new permanent license key file on another system. See the *Administering Licenses for Rational Software* manual or the Rational License Key Administrator Help for more information about moving license keys.

- 5 On the **Select Installation Option** dialog box, choose one of these installation options:

Table 9 Installation Options

Option	If you select this option
Install Rational Product	<ul style="list-style-type: none"> ▪ The Select License Option dialog box appears. ▪ Go to Step 6 which describes each of the license options.
Install License Server	<ul style="list-style-type: none"> ▪ The Setup program installs FLEXlm License Server software. See the <i>Administering Licenses for Rational Software</i> manual for how to import a license key file and start the License Server. ▪ The Select License Option (Step 6) and Choose Product to Install (Step 7) dialog boxes do not appear. ▪ Go to Step 9 which describes the License Agreement dialog box.
Install Rational ClearCase LT Server	<ul style="list-style-type: none"> ▪ The Setup program installs the ClearCase LT Server software. See <i>Rational ClearCase LT – Before You Install</i> on page 14 for requirements. ▪ The Select License Option (Step 6) and Choose Product to Install (Step 7) dialog boxes do not appear. ▪ Go to Step 9 which describes the License Agreement dialog box.

Table 9 Installation Options

Option	If you select this option
Install Unlicensed Tools	<ul style="list-style-type: none"> ▪ The Setup program installs unlicensed tools provided by some Rational products. See the product-specific pre- and post-installation requirements in this manual for more information. ▪ The Select License Option (Step 6) dialog box does not appear. ▪ Go to Step 7 which describes the Choose Product to Install dialog box.

If you selected **Install License Server**, **Install Rational ClearCase LT Server**, or **Install Unlicensed Products**, you did not see the **Select License Option** dialog box.

- 6** Before you select one of the options in the **Select License Option** dialog box, determine whether there are any special licensing requirements in the product-specific sections of *Before You Install* on page 5. For more information about license servers and Rational license key files, see the *Administering Licenses for Rational Software* manual or the Rational License Key Administrator online Help. The License Key Administrator appears in your **Start Menu** with each Rational product or the FLEXlm License Server software.

Table 10 License Options

Option	If you select this option
Import License File	<ul style="list-style-type: none"> ▪ The Setup program imports the node-locked Rational license file to the system that will run Rational software. ▪ The Choose Product to Install dialog box displays all licensed products.
Obtain License Key from Server	<ul style="list-style-type: none"> ▪ Fill in the name of the license server, if you have already installed the FLEXlm license server software and license keys and started the License Server. ▪ The Choose Product to Install dialog box displays all licensed products.

Table 10 License Options

Option	If you select this option
Enter Temporary Node-Locked Key	<ul style="list-style-type: none"> ▪ The Enter Temporary Key dialog box appears. Enter the evaluation or temporary license key and expiration date found on your License Key Certificate. This dialog box also prompts you to select a Rational product to install. ▪ The Choose Product to Install dialog box displays all products on Rational Solutions CD.
Upgrade or Reinstall Product	<ul style="list-style-type: none"> ▪ This option is selected by default if the Setup program detects license keys on your system or if your system is connected to a FLEXlm License Server. ▪ You do not have to install new license keys because you can use the product license keys that you already have installed. ▪ The Choose Product to Install dialog box displays all licensed products. The Setup program skips this dialog box if it detects only one product license license. It assumes that you want to upgrade or reinstall the product.
Install Product before Licensing	<ul style="list-style-type: none"> ▪ You can install Rational products before you install a node-locked license key or install a floating license key on a FLEXlm License Server. ▪ The Choose Product to Install dialog box displays all products on Rational Solutions CD.

- 7 Choose the Rational Suite product you want to install from the **Choose Product to Install** dialog box.

Note: Go to Step 8 if you are installing ClearCase LT Client or any of the Rational Suite editions. If you are installing other products, skip Step 8.

- 8 When you select ClearCase LT Client or any of the Rational Suite editions, the **Choose Product to Install** dialog box provides an entry for the name of the ClearCase LT Server. This entry is not required to install the ClearCase LT Client software or any of the Rational Suite editions. You can enter the ClearCase LT Server name in the Control Panel of each ClearCase LT client after you have set up the ClearCase LT Server.

Note: You cannot install the ClearCase LT Server and the ClearCase LT Client on the same system.

- 9 Choose to accept or not accept the Rational Software license agreement in the **License Agreement** dialog box.
 - If you accept the license agreement, the Setup program continues.
 - If you do not accept the license agreement, exit the Setup program by clicking **Finish** or **Cancel**. When you exit from the Setup program, the Setup program makes no changes to the system.
- 10 Select an installation type in the **Setup Configuration** dialog box. The types are described in Table 4 on page 12. If you select **Custom/Full**, go to Step 11. If you select any other installation type, confirm that you have sufficient free space for the installation before you click **Next**.

Note: To enable all installation type options, remove all Rational Suite products from the system and then restart the Setup wizard. Some Rational products, such as ClearCase LT Server and ClearCase LT Client, provide only the **Typical** option.

- 11 After you have chosen **Custom/Full**, specify which features and components to install on your system in the **Choose Features** dialog box. Click the **+** in front of features and components to expand options, then select or clear options. There are dependencies between some products that may force an installation option, even if you have cleared it.

You *must* choose the **Custom/Full** installation option to install the following:

- RequisitePro database configuration scripts
- RequisiteWeb
- ClearQuestWeb
- Rational Unified Process with IBM e-Business extensions
- Rational Unified Process with Microsoft.NET extensions

See the pre- and post-installation chapters in this manual for additional software you can install using the **Custom/Full** installation type.

Note: Before you click **Next**, confirm that you have sufficient free space for the installation.

Confirm Sufficient Free Space for the Installation

If the amount of free space is less than the amount required, either

- Exit from the Setup program and make more space available on the specified disk, or
- Specify an alternate *Install Path*. To specify another *Install Path*, type the new path in the *Install Path* field or use the **Browse** button to select a drive and directory.

The Setup program requires that you install all Rational programs in the same directory. If a Rational product has been previously installed with the Rational Software Setup program, the **Browse** option and *Install Path* field are disabled. To enable these options, remove all Rational products from the system, then reinstall the products.

Note: The Setup program installs Microsoft Core Components and some additional files on the same drive as the operating system (often the C:\ drive), even if you have specified an alternate drive for installation. These files can require up to 20 MB of disk space on your hard drive.

Other Dialog Boxes

You may see one or two of these dialog boxes before you get to the **Confirmation** dialog box in Step 12.

Software Use

The **Software Use** dialog box appears if you have selected a Rational Suite edition, ClearQuest, or Robot product in the **Choose Product to Install** dialog box. These products install files and sample applications based on the way that you will use the software. Table 3 on page 11 describes the administrator, client, evaluator options in more detail.

The Setup wizard does not recalculate the disk space required for your updated selections.

Update Shared Components

The **Update Shared Components** dialog box appears if the Setup wizard needs to update shared files or components on your system. Click **Next** to have the Rational Software Setup program install these files for you or **Cancel** to install these files yourself. For additional information, see *Installing Shared Files* on page 13 or the Rational Software Setup online Help.

The Setup wizard does not recalculate the disk space required for your updated selections.

Upgrade Compatibility

The **Upgrade Compatibility** dialog box appears if you have older Rational products installed on your system. Because Rational tools share files and components, this installation can cause the older Rational products to stop working. You will see no visual clue that the older products may be compromised.

For each of the older products listed, we strongly recommend that you do one of the following:

- **Upgrade it:** Complete this installation, and then restart the Setup program to upgrade the listed products. Upgrading each product updates all necessary files, registry entries, startup menu items, and shared components on your system. See the product-specific upgrade sections in the *Rational Suite Release Notes* for requirements.
- **Remove it:** Complete this installation, and then see *Removing Rational Software* on page 61 to remove the listed products from the system.

12 The **Confirmation** dialog box displays the product features to be installed.

13 The **Error Summary** dialog box displays errors from the first part of the software installation. If the installation is successful, you do not see this dialog box.

The Rational Software Setup program writes a log of installation messages in `<Install Path>\Rational\RSSetup\RSsetup.log`.

Possible Reboot Required

If files required for the installation are in use during the Rational Software Setup program, and if the program needs to install shared components on your system, the Setup program may need to reboot your system. After rebooting, do the following:

- 1 Log on as the same administrator identity to complete the installation procedure. If you do not log on as the same administrator identity, the installation does not complete correctly.

The installation process completes on your system.

- 2 Click **Finish** to exit from the Rational Software Setup program.

Preparing for and Installing Rational ClearCase LT

4

Rational ClearCase LT is a client/server product. To use a ClearCase LT client, a ClearCase LT server must be installed in the same network domain as the clients. A client can access only one server.

To ensure adequate performance for all ClearCase LT clients, we recommend that you install ClearCase LT Server on a dedicated host.

Note: If you have installed ClearCase on any host that you intend to use as a ClearCase LT client or server, you must uninstall ClearCase on those hosts before you install ClearCase LT.

This chapter describes installing ClearCase LT Server on a dedicated host. For optimal performance during production use, we strongly recommend this configuration. However, for evaluation purposes or for small teams, you can install ClearCase LT Server and Rational Suite on the same machine.

ClearCase LT Server Installation

Before you install ClearCase LT Server, look at the resources in your present environment.

First, Windows NT and Windows 2000 limit concurrent access to systems on which Windows NT or Windows 2000 Workstation software is installed: a maximum of 10 systems can access a Windows NT or Windows 2000 Workstation host simultaneously by means of file-system mounts or UNC names.

If you anticipate many users will access a single VOB more or less simultaneously, install Windows NT or Windows 2000 server software on your ClearCase LT server host.

Second, you have a number of installation options:

- Installing on dual-boot systems.

On a system that can boot multiple Windows NT, Windows 95, Windows 98, or Windows Me installations, you must install ClearCase LT in separate directories for each version of the operating system. For more information, see *ClearCase LT Release Notes*.

- Installing ClearCase LT in a mixed network environment of Windows and UNIX hosts.

You can install ClearCase LT Server on any UNIX platform that ClearCase LT supports or on a Windows NT or Windows 2000 host. For a list of platforms that ClearCase LT supports, see *ClearCase LT Installation Notes* or the Rational Software Web site (www.rational.com). For more information about interoperation between Windows and UNIX, see *Administering ClearCase LT*.

Note: Before you install ClearCase LT in a mixed environment, verify that you have licenses for both systems.

- Installing the FLEXlm license server and ClearCase LT Server on one host or on different hosts. If you are installing ClearCase LT for standalone use, you must use floating licenses. For more information about Rational Software licensing, see *Administering Licenses for Rational Software*.

System and Software Requirements

Table 11 lists the system and software requirements for installing ClearCase LT.

Table 11 ClearCase LT Requirements

Item	Minimum Requirements
Operating System	Windows NT 4.0, SP4, SP5, SP6a Windows 2000 Windows Me (ClearCase LT Client only) Windows 95 all versions (ClearCase LT Client only) Windows 98 all versions (ClearCase LT Client only)

Table 11 ClearCase LT Requirements

Item	Minimum Requirements
<p>Windows 95 Windows 98 Windows Me</p>	<ul style="list-style-type: none"> ▪ Client for Microsoft Networks (shipped with both platforms) ▪ TCP/IP (shipped with both platforms) ▪ Windows Sockets 2 (shipped with Windows 98) If Windows Sockets 2 is not present on a Windows 95 host, ClearCase LT installs it. For more information, see <i>ClearCase LT Release Notes</i>. ▪ An Adobe Acrobat Reader to access the online manuals, which are in .pdf format. ▪ A Web browser on any system that accesses ClearCase LT through the Web interface, either Netscape 4.5 or later, or Internet Explorer 4.0.1 (SP 1) or later. (Note that it is not necessary to install ClearCase LT on such a system.)
<p>ClearCase LT Server Processor</p>	<ul style="list-style-type: none"> ▪ Pentium class processor ▪ 128 MB RAM
<p>ClearCase LT Client Processor</p>	<ul style="list-style-type: none"> ▪ Pentium class processor ▪ 64 MB RAM
<p>Supported File Systems:</p> <ul style="list-style-type: none"> ▪ Windows NT ▪ Windows 95 and Windows 98 ▪ Windows 2000 	<p>FAT, NTFS, LANMAN, NFS FAT, FAT32 FAT, FAT32, NTFS, LANMAN</p>
<p>ClearCase LT Server Disk Space</p> <p>The server also needs enough disk space to contain the files and databases used for storage. The amount of space required depends on the characteristics and use of the VOBs and views.</p>	<p>70 MB</p>
<p>ClearCase LT Client Disk Space</p> <p>The client also needs enough disk space to contain all files loaded into snapshot views and all view-private files added to the views. The amount of space required depends on the number and sizes of the files in the views.</p>	<p>60 MB</p>

Installation Procedures

You can install ClearCase LT Server as any of these identities:

- As local administrator
- As a user who is a member of local administrator's group
- As domain administrator

However, the local administrator identity does not provide the appropriate permissions to run Server Set-Up, which is started after ClearCase LT Server installation completes. We recommend that you install ClearCase LT Server as the identity of a user who is both in the same domain as the server host and is a member of the local administrator's group.

How you install ClearCase LT depends on what you want to install and when you installed a Rational Suite. Select the procedure appropriate for your situation:

- You want to evaluate ClearCase LT only.
- You want to evaluate ClearCase LT and a Rational Suite Studio product.
- You want to install ClearCase LT only.
- You want to install ClearCase LT and a Rational Suite.
- You want to install ClearCase LT after you have installed Rational Suite.
- You want to upgrade from a previous version of a Rational Suite and use ClearCase LT
- You want to install ClearCase and a Rational Suite.

To Evaluate ClearCase LT

To evaluate ClearCase LT, install the server only. If ClearCase is installed on the host on which you want to make your evaluation, uninstall ClearCase before you install ClearCase LT.

- 1 Run the Rational Suite installation. On the **Select Installation Option** screen, select **ClearCase LT Server**.
- 2 Set up your evaluation license for ClearCase LT Server.
 - a Install a FLEXlm server, if you do not have one.
 - b Click **Start > Programs > Rational ClearCase LT Server > Rational License Key Administrator**.

- c Click **Settings > Service Configuration**. In the **Use License Server** box, enter the name of the FLEXlm server host.

After you have completed the installation and licensing, click the **Rational ClearCase LT** icon on your desktop to start ClearCase Explorer. You can perform many ClearCase operations, including joining a project and creating a view. For more information on using ClearCase Explorer, click **Help**.

To Evaluate ClearCase LT and a Rational Suite

To evaluate ClearCase LT and a Rational Suite, you must install ClearCase LT Server first. If ClearCase is installed on the host on which you want to make your evaluation, uninstall ClearCase before you install ClearCase LT Server.

- 1 Run the Rational Suite installation. On the **Select Installation Option** screen, select **ClearCase LT Server**.
- 2 Rerun Rational Suite installation on the same host and select the Rational Suite that you want to install.
- 3 Set up your product license.

If you have a floating evaluation license for your Rational Suite:

- a Install a FLEXlm server, if you do not have one.
- b On the host where the Rational Suite is installed:
 - i Click **Start > Programs > Rational Suite Studio *Edition* > Rational License Key Administrator**.
 - ii Click **Settings > Service Configuration**. In the **Use License Server** box, enter the name of the FLEXlm server host.
- c On the ClearCase LT server host:
 - i Click **Start > Programs > Rational ClearCase LT Server > Rational License Key Administrator**.
 - ii Click **Settings > Service Configuration**. In the **Use License Server** box, enter the name of the FLEXlm server host.
 - iii Click **Settings > License Usage Mapper**. In the **License Usage Mapping** dialog box, select the Rational Suite from the **Usage Order List**.

If you have a node-locked evaluation license for your Rational Suite:

- a On the host where the Rational Suite and ClearCase LT Server are installed, license the Rational Suite:
 - i Click **Start > Programs > Rational Suite *Edition* > Rational License Key Administrator**.
 - ii Click **License > Enter a License** and select the node-locked option.
 - iii Click **Next**. From the **Product** list, select the Rational Suite that you have installed .
 - iv In the **License Key** box, type the license key number.
- b Then license ClearCase LT Server:
 - i Click **Start > Programs > Rational ClearCase LT Server > Rational License Key Administrator**.
 - ii Click **Settings > License Usage Mapper**. In the **License Usage Mapping** dialog box, select the Rational Suite from the **Usage Order List**.

After you complete the installation and licensing, click the **Rational ClearCase LT** icon on your desktop to start ClearCase Explorer. You can perform many ClearCase operations, including joining a project and creating a view. For more information on using ClearCase Explorer, click **Help**.

To Install Only ClearCase LT

Installing ClearCase LT involves installing ClearCase LT Server on a dedicated host and ClearCase LT Client on hosts in the same network domain as the server host.

- 1 Install the server on the dedicated host. To do so, run the Rational Suite installation. On the **Select Installation Option** screen, select **ClearCase LT Server**.
- 2 Install the clients. To do so, run the Rational Suite installation on every workstation that will be a client. On the **Choose a Product** screen, select **ClearCase LT Client**.

You will be prompted to enter the name of a server. Enter the name of the ClearCase LT server host.

- 3 Install a FLEXlm server, if you do not have one. Then run the License Administrator on every host on which you installed ClearCase LT.

On the ClearCase LT server host:

- a Click **Start > Programs > Rational ClearCase LT Server > Rational License Key Administrator**.
- b Click **Settings > Service Configuration**. In the **Use License Server** box, enter the name of the FLEXlm server host.

On ClearCase LT client host:

- a Click **Start > Programs > Rational ClearCase LT Client > Rational License Key Administrator**.
- b Click **Settings > Service Configuration**. In the **Use License Server** box, enter the name of the FLEXlm server host.

To Install ClearCase LT and a Rational Suite

- 1 Install ClearCase LT Server on a dedicated host. To do so, run the Rational Suite installation. On the **Select Installation Option** screen, select **ClearCase LT Server**.
- 2 Rerun the Rational Suite installation and select the Rational Suite that you want to install. ClearCase LT Client is installed by default.
- 3 When you are prompted for the name of the ClearCase LT server host, do one of the following:
 - Enter the host name, if you know it.
 - Leave the box blank and provide the name after you complete the installation.
- 4 If you did not provide the name of the server host in Step 3, click the **ClearCase** icon in Control Panel and enter the name.
- 5 Set up your product license.

If you have a floating Rational Suite license:

- a Install a FLEXlm server, if you do not have one.
- b On the host where the Rational Suite is installed:
 - i Click **Start > Programs > Rational Suite *Edition* > Rational License Key Administrator**.
 - ii Click **Settings > Service Configuration**. In the **Use License Server** box, enter the name of the FLEXlm server host.
- c On the ClearCase LT server host:
 - i Click **Start > Programs > Rational ClearCase LT Server > Rational License Key Administrator**.
 - ii Click **Settings > Service Configuration**. In the **Use License Server** box, enter the name of the FLEXlm server host.
 - iii Click **Settings > License Usage Mapper**. In the **License Usage Mapping** dialog box, select the Rational Suite from the **Usage Order List**.

If you have a node-locked Rational Suite license, you must purchase a floating license for ClearCase LT Server. Then proceed as follows:

- a Install a FLEXlm server, if you do not have one.
- b On the ClearCase LT server host:
 - i Click **Start > Programs > Rational ClearCase LT Server > Rational License Key Administrator**.
 - ii Click **Settings > Service Configuration**. In the **License Key Source** box, enter the name of the FLEXlm server host.
- c On the host where the Rational Suite is installed:
 - i Click **Start > Programs > Rational Suite *Edition* > Rational License Key Administrator**.
 - ii Click **License > Import License Key(s)** and select your license key import file.

To Install ClearCase LT After Installing a Rational Suite

If you did not install ClearCase LT Client when you installed and licensed your Rational Suite, you must rerun the Rational Suite installation to reinstall that product and then install ClearCase LT Server

- 1 Install ClearCase LT Server on a dedicated host. To do so, run the Rational Suite installation. On the **Select Installation Option** screen, select **ClearCase LT Server**.
- 2 Rerun the Rational Suite installation on all clients on which you have installed and licensed the Rational Suite. The **Upgrade or Reinstall Product** option on the installation and licensing screen is selected. Click **Next**.
- 3 On the **Choose a Product** screen, select the Rational Suite that you are reinstalling. When you reinstall your Rational Suite, ClearCase LT Client is installed, by default.
- 4 When you are prompted for the name of the ClearCase LT server host, do one of the following:
 - Enter the host name, if you know it.
 - Leave the box blank and provide the name after you complete the installation.
- 5 If you did not provide the name of the server host when you installed the client, click the **ClearCase** icon in Control Panel on your client host and enter the name.
- 6 Set up your ClearCase LT Server licenses. The ClearCase LT Client is licensed automatically on the hosts on which you have reinstalled your Rational Suite.

If you have a floating Rational Suite license:

- a Install a FLEXlm server, if you do not have one.
- b On the ClearCase LT server host:
 - i Click **Start > Programs > Rational ClearCase LT Server > Rational License Key Administrator**.
 - ii Click **Settings > Service Configuration**. In the **Use License Server** box, enter the name of the FLEXlm server host.
 - iii Click **Settings > License Usage Mapper**. In the **License Usage Mapping** dialog box, select the Rational Suite from the **Usage Order List**.

If you have a node-locked Rational Suite license, ClearCase LT Client is licensed automatically after you reinstall your Rational Suite. You will need to contact Rational Software to purchase a floating license for ClearCase LT Server. Then proceed as follows:

- a Install a FLEXlm server, if you do not have one.
- b On the ClearCase LT server host:
 - i Click **Start > Programs > Rational ClearCase LT Server > Rational License Key Administrator**.
 - ii Click **Settings > Service Configuration**. In the **Use License Server** box, enter the name of the FLEXlm server host.

To Upgrade from a Previous Version of Rational Suite and Install ClearCase LT

- 1 Run the Rational Suite installation, the **Upgrade or Reinstall Product** option on the installation and licensing screen is selected. Click **Next**.
- 2 On the **Choose a Product** screen, select the Rational Suite that you are upgrading. ClearCase LT Client is installed, by default.
- 3 When you are prompted for the name of the ClearCase LT server host, do one of the following:
 - Enter the host name, if you know it.
 - Leave the box blank and provide the name after you complete the installation.
- 4 Install ClearCase LT Server on a dedicated host. To do so, rerun the Rational Suite installation. On the **Select Installation Option** screen, select **ClearCase LT Server**.

If you did not provide the name of the server host when you installed the client, click the **ClearCase** icon in **Control Panel** and enter the name.

- 5 Set up your ClearCase LT Server license. ClearCase LT Client and the Rational Suite are licensed automatically on the host on which the Rational Suite is upgraded.

If the Rational Suite that you are upgrading uses a floating license:

- a Install a FLEXlm server, if you do not have one.
- b On the ClearCase LT server host:
 - i Click **Start > Programs > Rational ClearCase LT Server > Rational License Key Administrator**.
 - ii Click **Settings > Service Configuration**. In the **Use License Server** box, enter the name of the FLEXlm server host.
 - iii Click **Settings > License Usage Mapper**. In the **License Usage Mapping** dialog box, select the Rational Suite name from the **Usage Order List**.

If the Rational Suite that you are upgrading uses a node-locked license, ClearCase LT Client and the Rational Suite are licensed automatically on the host on which Rational Suite Studio is upgraded.

To license the ClearCase LT server host, you will need to contact Rational Software to purchase a floating license for ClearCase LT Server. Then proceed as follows:

- a Install a FLEXlm server, if you do not have one.
- b Click **Start > Programs > Rational ClearCase LT Server > Rational License Key Administrator**.
- c Click **Settings > Service Configuration**. In the **Use License Server** box, enter the name of the FLEXlm server host.

To Install ClearCase and a Rational Suite

- 1 Install ClearCase. Follow the procedures in *ClearCase Product Family Installation Notes*.
- 2 Run the Rational Suite installation on the same host and select the Rational Suite Studio product that you want to install. In this case, ClearCase LT Client is not installed when you install a Rational Suite Studio product.

Note: If you install ClearCase as a server on one host and then run the Rational Suite installation to install a Rational Suite Studio product on a different host, you will not be able to use your ClearCase LT Client with the ClearCase server.

This chapter provides an overview of steps that you should perform after you've installed Rational Suite and individual Rational Suite products. Each product section may include information about configuring databases, e-mail, and Web products, installing additional software, and setting up product integrations.

This chapter includes the following topics:

- *Rational ClearCase LT – After You Install* on page 41
- *Rational ClearQuest – After You Install* on page 44
- *Rational RequisitePro – After You Install* on page 45
- *Rational DevelopmentStudio–RealTime – After You Install* on page 47
- *Rational Testing Products – After You Install* on page 48

Rational ClearCase LT – After You Install

After you install ClearCase LT Server and ClearCase LT Client, you must configure the server system and perform some administrative tasks.

Configuring the ClearCase LT Server

After you install the ClearCase LT Server, you need to run the Set-Up Wizard, import any existing files you want to use into ClearCase LT, and make any adjustments to the operating environment.

Running the Server Set-Up Wizard

If you performed the installation as a user who is a member of local administrator's group or domain administrator, the Server Set-Up Wizard runs when the ClearCase LT Server installation completes. Click in the Wizard window that appears at the end of the installation.

However, if you installed ClearCase LT Server as the local administrator, you must run the Server Set-Up Wizard explicitly. You must log out and log in again as one of the appropriate identities before you can run the wizard. After you log in, click **Start>Rational ClearCase LT Server>Rational ClearCase LT Server Set-Up Wizard**.

The wizard creates these items:

- Storage directories for the ClearCase LT databases
- A project VOB
- A component VOB
- An initial UCM project
- The ClearCase LT tutorial VOB

Importing Files into ClearCase

When the Server Set-Up Wizard runs, the **Import Files** check box is selected by default. If you want to import ordinary or PVCS files into version control in the VOB that you have created using the Server Set-Up Wizard, follow the screen instructions in the Import Wizard.

Adjusting the Operating Environment

Make these adjustments to the Client and Server systems, as necessary:

Server Domains

A ClearCase LT Server on Windows 2000 or Windows NT must belong to a Windows NT or Windows 2000 server domain.

For all ClearCase LT Clients on Windows 95, Windows 98, or Windows Me, you must configure the Client for Microsoft Networks component in Network properties to log on to the Windows NT or Windows 2000 server domain in which the ClearCase LT Server resides.

To use ClearCase LT from Windows 2000, Windows NT, Windows 95, Windows 98, or Windows Me, you must log on to a domain account (not a local, per-system user account). For more information about Windows NT server domains, see *Administering ClearCase LT*.

CLEARCASE_PRIMARY_GROUP environment variable

On Windows 95, Windows 98, or Windows Me systems, you must set the environment variable CLEARCASE_PRIMARY_GROUP to the value of user in the autoexec.bat file on each system running ClearCase LT. The Windows system does not pick up this value from settings in your Windows NT logon account.

Compatible Language Settings

If you configure a ClearCase LT Server and ClearCase LT Client to use different language settings but one of those settings uses single-byte encoding and the other uses double- or multi-byte encoding, ClearCase LT won't operate properly. In this situation, you must reset the language environment on the Client to match the environment on the Server.

Additional Administrative Tasks

After you set up the Server system, you can perform basic administration of VOB and view storage directories. See *Administering ClearCase LT* for more information.

Installing Internet Explorer

You need Internet Explorer to use the ClearCase LT Administration Console. You can download it from the Microsoft Web site at www.microsoft.com/windows/IE. For more information, see *ClearCase LT Release Notes*.

To access the console, click **Start > Programs > Rational ClearCase LT Server > Rational ClearCase LT Administration Console**.

Creating Views on Client and Server Hosts

You need to create views in which users can work on both the Client and the Server systems. How you create them depends on whether your site will be using the Unified Change Management (UCM) or Base ClearCase.

To create a development and an integration view in UCM:

- 1 Click the **Rational ClearCase LT** icon on your desktop to start ClearCase Explorer.
- 2 Click the **Toolbox** tab, click the **UCM** bar, and then click the **Join Project** icon to run the Join Project Wizard.

To create a view in base ClearCase:

- 1 Click the **Rational ClearCase LT** icon on your desktop to start Clearcase Explorer.
- 2 Click the **Toolbox** tab, select the **Base ClearCase** bar, and then click the **Create View** icon.

ClearCase LT Documentation

The following list summarizes the ClearCase LT documents mentioned in this section:

- *Administering ClearCase LT*
- *Introducing Rational ClearCase LT*
- *ClearCase LT Release Notes*

Rational ClearQuest – After You Install

This section provides important information about configuring ClearQuest and ClearQuest Web.

Perform the following steps after you install ClearQuest.

- To receive automatic e-mail messages from ClearQuest, see the instructions in the *Installing Rational ClearQuest* manual.
- To customize the defect reports that ship with ClearQuest, install Crystal Reports Pro 6.0. To install Crystal Reports, use the Crystal Reports installation directions that come with the separate Crystal Reports CD in your Rational software kit.
Note: A user who will not be editing existing or creating new report formats does not need to install Crystal Reports.
- To enable users to submit and modify records using e-mail, configure the Rational E-mail Reader. The E-mail Reader is an e-mail processing tool that parses a submitter's e-mail and commits new records or changes to the database. For more information on the E-mail Reader see "Administering ClearQuest E-mail" in the *Administering Rational ClearQuest* guide.
- ClearQuest integrates with software configuration management tools by relating change requests directly to changes in your project's evolving code base.
 - a To set up the integration with Rational ClearCase or Rational ClearCase LT, see "Installing ClearQuest for an Administrator" in *Installing Rational ClearQuest*.
 - b To use the ClearQuest/ClearCase UCM integration, consult the *Managing Software Projects with ClearCase* guide provided with ClearCase and ClearCase LT.
 - c To set up the integration with Microsoft Visual SourceSafe, read "Installing ClearQuest for an Administrator" in *Installing Rational ClearQuest*.

- The ClearQuest Web interface gives users who do not have ClearQuest on their workstations access to ClearQuest project data. Before installing or upgrading ClearQuest Web using the **Custom/Full** installation option in the Rational Software Setup, read about the Web Server requirements in the ClearQuest release notes.
- To set up the ClearQuest Web configuration and extend e-mail notification support to Web clients, see *Installing Rational ClearQuest*.

ClearQuest Documentation

The following list summarizes the ClearQuest documents mentioned in this section:

- *Installing Rational ClearQuest*
- *Rational ClearQuest Release Notes*: An HTML file that contains the most current system requirements information (including platform version support).
- *Administering Rational ClearQuest*: A guide on how to customize ClearQuest to meet your needs.

Rational RequisitePro – After You Install

This section provides a list of general requirements for configuring Oracle and Microsoft SQL Server databases for RequisitePro projects. In addition, it includes requirements for e-mail setup for RequisitePro discussions, and installation and configuration procedures for RequisiteWeb.

Perform the following steps after you install RequisitePro.

- RequisitePro provides the option of using Oracle7, Oracle8, Microsoft SQL Server 7.0, or Microsoft Access databases. You can easily migrate project data currently in Access to Oracle or SQL Server using the RequisitePro Database Type Conversion Wizard.
 - a Refer to Oracle or Microsoft documentation for information on installing Oracle or Microsoft SQL Server.
 - b To configure an Oracle or SQL Server database for RequisitePro projects, refer to *Installing Rational RequisitePro* or the online documents `oraclesetup.html` and `sqlsetup.html` in RequisitePro installation directory, by default:
`c:\Program Files\Rational\RequisitePro\help`
 - c If you are using an Oracle database, you must also install the Oracle client software on your PC. To use RequisiteWeb to access Oracle-based projects, configure Oracle client software on the Web server.

- d Install the database configuration scripts with the **Custom/Full** installation option in the Rational Software Setup program. The program installs schema creation scripts in one or both of these locations on your local machine:
c:\Program Files\Rational\RequisitePro\database\oracle
c:\Program Files\Rational\RequisitePro\database\sqlserver

If you did not install the scripts during the RequisitePro installation process, you can copy them to your local machine from the RequisitePro\database directory on your installation media.

- RequisiteWeb lets users read, modify, create, and reparent Rational RequisitePro project requirements across the Internet or an Intranet. By using Web browsers – Netscape Navigator or Microsoft Internet Explorer – RequisiteWeb provides platform-independent, thin-client access to RequisitePro project data.

For information about installing and configuring RequisiteWeb, see *Installing Rational RequisitePro* or refer to the *Rational RequisiteWeb Installation and Configuration* document, which is available through the online release notes for RequisitePro and in the RequisiteWeb installation directory:

c:\Program Files\Rational\RequisitePro\reqweb\reqwebsetup.html

- To allow users to reply to discussions via e-mail, and to enable discussion e-mail for RequisiteWeb users, configure an e-mail handler for each project using the Rational E-mail Reader. Initial discussion items and replies are automatically stored in the RequisitePro database and sent to discussion participants via e-mail. For more information on the E-mail Reader, see *Installing Rational RequisitePro*.

RequisitePro Documentation

The following list summarizes the RequisitePro documents mentioned in this section:

- *Installing Rational RequisitePro*: A manual for installing Rational RequisitePro, with instructions for configuring Oracle and Microsoft SQL Server databases, Rational RequisiteWeb, and the Rational E-mail Reader for RequisitePro discussions.
- *Rational RequisiteWeb Installation and Configuration*: Online information for configuring RequisiteWeb, available in HTML format (reqwebsetup.html) and in the manual *Installing Rational RequisitePro*.

Rational DevelopmentStudio–RealTime – After You Install

Perform the following steps after you install Rational DevelopmentStudio–RealTime Edition.

- To upgrade a model created in an earlier version of Rational Suite DevelopmentStudio–RealTime Edition, open the model in the current version. The upgrade happens automatically.
- Convert Rational Rose and ObjecTime Developer models by following instructions in the *Rational Rose RealTime Getting Started Guide*.
- To test the environment of Rational Suite DevelopmentStudio - RealTime Edition, read the following general requirements. If you just want to construct UML models and not execute them, you don't have to read this section.
 - a To generate code and execute UML models, install Microsoft Visual C++ 5.0 or 6.0 on your system and configure Visual C++ to run from the DOS prompt.
 - b To perform testing on your environment for Rational Rose RealTime, see "Testing Your Environment" in the *Installation Guide - Rational Rose RealTime, Windows* for specific instructions.
 - c To perform testing on your environment for Rational Purify, start Purify from the Windows start menu. When Purify is running, you can view error and warning messages about run-time errors and memory leaks, as well as informational messages about the progress of your program's execution.
For detailed information on Purify, see *Getting Ahead with Rational Purify*.
 - d To perform testing on your environment for Rational SoDA for Word, start Rational SoDA for Word from the Windows start menu. When SoDA for Word starts, a blank document in Microsoft Word is displayed, and the SoDA menu is enabled.
For detailed information on SoDA for word, see *Using Rational SoDA for Word*.
 - e To perform testing on your environment for Rational RequisitePro, start Rational RequisitePro from the Windows start menu. When RequisitePro starts, the RequisitePro Tool Palette appears.
For detailed information on RequisitePro, see *Using Rational RequisitePro*.

Rational Suite DevelopmentStudio–RealTime Documentation

The following list summarizes the DevelopmentStudio–RealTime documents mentioned in this section:

- *Rational Rose RealTime Installation Guide*
- *Rational Rose RealTime Getting Started Guide*

Rational Testing Products – After You Install

The following table lists the additional components that you can install for Rational Testing products.

Table 12 Additional Installations

To	Install	See
Test ActiveX controls, Java applets, Oracle Forms, and Visual Basic applications.	Rational Test Enablers: <ul style="list-style-type: none">▪ Rational ActiveX Test Control.▪ Rational Test Java Enabler.▪ Rational Test Oracle Forms Enabler.▪ Rational Test Visual Basic Enabler.	“Installing the Rational Test Enablers” in <i>Installing Rational Testing Products</i> .
Enter defects remotely using a Web-based interface.	Rational ClearQuest Web.	“Installing Web Server Components” in <i>Installing Rational Testing Products</i> .
Provide data for other team members.	Rational Web Server Components.	“Installing Web Server Components” in <i>Installing Rational Testing Products</i> .
Evaluate a sample application, applets, and Rational project.	The Sample Applications.	“Installing the Sample Applications” in <i>Installing Rational Testing Products</i> .
Record sessions over a network.	The Rational Test network driver.	“Installing the Rational Test Network Driver” in <i>Installing Rational Testing Products</i> . Determine the kind of network you will be using (Ethernet or Token Ring). You need to know this information to install the network driver.

Table 12 Additional Installations

To	Install	See
Remotely run test scripts on Windows or UNIX Agents.	Rational Test Agents.	“Installing Rational Test Agents” in <i>Installing Rational Testing Products</i> .
Record GUI test scripts on multiple computers.	Rational Robot on each computer.	“Installing Rational Robot with TestStudio” in <i>Installing Rational Testing Products</i> .
Use Sybase SQL Anywhere software for your ClearQuest database.	Sybase SQL Anywhere Database Server.	“How to Install the Sybase SQL Anywhere Database Server Software” in <i>Installing Rational Testing Products</i> .
Customize defect reports and create new report formats.	Crystal Reports.	Use the Crystal Reports installation directions that come with the Crystal Reports CD.

Rational Suite Testing products come with special defect reports to help you manage test efforts. When you create a Rational project that contains an associated ClearQuest database, you automatically get these defect reports and report formats. For more information about creating a project that is associated with a ClearQuest database, see “Creating and Configuring a Rational Administrator Project” in *Using the Rational Administrator*.

Rational Testing Documentation

The following list summarizes the Rational Testing documents mentioned in this section:

- *Installing Rational Testing Products*
- *Using the Rational Administrator*

You can configure Rational Software Setup to perform silent and minimal installations of Rational software. Silent installations let you install a Rational Software product, using the same parameters, repeatedly. A minimal installation lets you install the files needed on client systems to run Rational products from a network location.

This chapter is divided into two sections. The first provides brief summaries of silent installation features and a brief description of the license key administrator command line. The second covers the simple procedure you must run to allow users to perform a minimal installation.

Note: Read Rational's *Silent Installation White Paper* before you begin a silent installation. The white paper is available on the Rational Web site at <http://www.rational.com/>. Select the following links in order: Technical Support, Whitepapers, and Rational Suite.

Overview of Silent Installations

This section describes how to perform a silent installation.

There are three basic steps:

- 1 Record an installation session.
- 2 Optionally, add a post-installation command to the recorded session.
- 3 Execute the installation session.

Recording a Software Installation

You can record a software installation session and then use the resulting response file to replay the session.

- 1 Insert the Rational Solutions for Windows CD in a CD drive.
- 2 Open a command window on your system and run `RSSetup` with the `-autocapture` switch. For example:

```
<Location>\setup\rssetup -autocapture
```

Where *<Location>* is the location of the Rational Solutions for Windows CD.

- 3 When the Rational Software Setup program starts, proceed with the installation procedure, as described in *Installing Rational Suite* on page 23. Your responses will be recorded in the responses file *<Install Path>\RSSetup\response.ini*.

Note: When you use the `-autocapture` switch, you cannot use the temporary license option. The silent installation procedure does not capture license certificate information in the `response.ini` file.

- 4 After you have answered all of the questions, the Setup wizard prompts you to continue with the installation of the product or to exit from the setup program. Click **OK** to proceed with the installation or **Cancel** to exit.

Note: Even if you cancel at this point, your answers are still saved.

Specifying a Post-Installation Command

You can specify a command for the silent installation program to perform after the installation has finished.

After you have recorded a silent installation, perform the following steps:

- 1 Use a text editor such as Notepad to edit the response file. Append a line similar to the following example to the end of the file. The label `[PostInstallCmd]` is required:

```
[PostInstallCmd]  
Command=post-installation-commands.bat
```

- 2 The `post-installation-commands.bat` is a batch file that contains the commands to execute. Such a file might contain the following commands:

```
licadmin -fserver.txt  
net send administrator "Installation Complete"
```

- 3 In this example, the License Key Administrator, `licadmin`, starts and uses the information in `server.txt` to specify the name of the license server that the current system will use. (See *License Key Administrator Command Line* on page 56 for the proper command syntax.) The batch file then sends a message to the administrator, indicating that the installation procedure is complete.
- 4 Save the response file to a unique name (to ensure that it is not overwritten by subsequent autocaptures). For example, save the response file with a name such as `c:\responses\ent-w-post.ini`

Performing a Silent Software Installation

After you have recorded your responses, use the response file to replay the installation, as in the following example:

```
<Location>\setup\rssetup -silent -response:response-path
```

In the example, *response-path* is the path of the response file. The default path is `c:\Program Files\Rational\RSSetup\response.ini`.

If a response file is in the default location, you do not have to specify the `-response:response-path` parameter. To override the default, include the `-response:response-path` parameter on the command line.

Warning: Before distributing this file to users, find out where users have Rational program files installed on their systems. If the location is different from the location you specify in the response file, the silent installation will install the latest program files in the new location. Installations in two places affect software performance. You may also have difficulty removing files with the standard removal procedure described in *Removing Rational Software* on page 61. Rational Software does not support editing the response file beyond adding a post-installation command and changing features described in the *Silent Installation White Paper*.

If you specify `-autocapture` on the `RSSetup` command line, your installation will initially select the product name identified in the previous `response.ini` file, but will allow you to select a new product for installation. A new `response.ini` file will be saved at the end of the installation procedure.

For additional information about the Rational Software Setup command-line syntax, see *RSSetup Command Syntax* on page 54.

Preparing Multiple Response Files

You can save multiple response files to support an unattended installation of different products.

- 1 Identify a directory where you will store your response files. The following examples use a directory named `C:\responses`.
- 2 Record the response file for each product to install.
- 3 Rename the response file with a unique file name. For example, save the Rose response file as `C:\responses\Rose-responses.ini`.

- 4 Perform the installation and specify the path to the response file as a parameter to the `-response` switch. For example:

```
<Install Location>\setup\rssetup -silent
-response:c:\response\Rose-response.ini
```

Note: This syntax should be on one line.

RSSetup Command Syntax

```
RSSetup [-silent [-response:response-path]] |
  [-verbose [-response:response-path]] |
  [-autocapture]
  [/product <product>] [/install /uninstall /update]
```

Table 13 RSSetup Command Parameters

Parameter	Description
<code>-silent</code>	Performs a silent (unattended) installation.
<code>-verbose</code>	Replays a recorded installation, allowing you to override the recorded responses. Note: If you override the responses, those changes are not written to the response file.
<code>-response:response-path</code>	Specifies the path to the response file. <i>response-path</i> is the path for the response file. The default path is <code><Install Location>\Setup\RSSetup\response.ini</code> , where <code><Install Location></code> is the location of the installation files.
<code>-autocapture</code>	Records your responses to a software installation, storing the responses in a file for later replay.
<code>/product product-identifier</code>	Specifies the product you are installing. Do not use this parameter for silent installations. For a silent installation, specify the product name in the response file instead. See Table 14 on page 55 for the list of identifiers you can use with this parameter.
<code>/install</code>	Installs the product you specified with the <code>/product</code> switch. This switch cannot be combined with <code>/uninstall</code> or <code>/update</code> . Do not use this parameter for silent installations. For a silent installation, specify the product name in the response file instead.

Table 13 RSSetup Command Parameters (continued)

Parameter	Description
/uninstall	Removes the product you specified with the /product switch. This switch cannot be combined with /install or /update.
/update	Updates the product you specified with the /product switch. This switch cannot be combined with /install or /uninstall. Do not use this parameter for silent installations.

Table 14 lists the product identifiers to use with the /product switch.

Table 14 Product Identifiers

Product Name	Product Identifiers
Globetrotter FLEXlm License Server	wsbuFLEXlmServer
Rational Test Agent	atbuPSAgent
Rational Test Enablers	atbuSetupEnablers
Rational Test Manager	atbuTestManager
Rational TeamTest	atbuTeamTest
Rational Robot	atbuTSRobot
Rational ClearCase LT Client	ClearCaseLTClient
Rational ClearCase LT Server	ClearCaseLTServer
Rational ClearQuest	ClearQuest-1.1
Rational ClearQuest TeamTest Edition	ClearQuestTeamTestEdition-1.1
Rational PureCoverage	coverageNT
Rational Suite DevelopmentStudio for UNIX	dsbuRSDSU
Rational Developer Kit	dsbuDeveloperKit
Rational Rose Inline EJB Addin	Inline
Rational Rose RealTime	RoseRealTime

Table 14 Product Identifiers (continued)

Product Name	Product Identifiers
Rational Purify	purifyNT
Rational Quantify	quantifyNT
Rational RequisitePro	rmbuRequisitePro
Rational Rose Enterprise Edition	Rose98i
Rational Rose Professional Ada Edition	Rose98iAdaProfessional
Rational Rose Professional C++ Edition	Rose98iC++Professional
Rational Rose Professional J Edition	Rose98iJavaProfessional
Rational Rose Modeler Edition	Rose98iModeler
Rational Rose Professional Visual Basic Edition	Rose98iVBProfessional
Rational Rose Professional Data Modeler Edition	RoseDataModelerProfessional
Rational Unified Process	ruObjectory51
Rational SoDA for Word	SoDA
Rational Suite AnalystStudio	wsbuAnalystEdition
Rational Suite DevelopmentStudio	wsbuDevelopmentStudio
Rational Suite DevelopmentStudio - RealTime Edition	wsbuDevelopmentStudioRT
Rational Suite Enterprise	wsbuEnterprise
Rational Suite TestStudio	wsbuTestStudio
Rational Suite Team Unifying Platform	wsbuUnifyingPlatform
Sybase SQL Anywhere Database Server	wsbuSQLAnywhereServer

License Key Administrator Command Line

You can run the Rational License Key Administrator from a command line or batch file to automate installing and configuring your license keys.

License Key Administrator Syntax

```
licadmin -ffilename.ext
```

Table 15 Licadmin Command Parameters

Parameter	Description
-ffilename.ext	<p>Specifies the path to the license parameter file.</p> <p>The license parameter file specifies the name of the license key server that you will use. For example:</p> <pre>Server:group-license-server</pre> <p>The keyword <code>Server</code> is case-sensitive.</p>

The results of running this command are written to the file `filename.ext_STATUS`, where `filename.ext` is the name of the license parameter file you used. The status file is created in the directory where you executed the `licadmin` command. See the following example steps.

- 1 Create a file that contains the following line:

```
Server:group-license-server
```

where `group-license-server` is the name of your FLEXlm License Server system.
- 2 Save the file as `server-info.txt`.
- 3 In a command window, run the following command:

```
licadmin -fserver-info.txt
```

Your system will be configured to use floating license keys from `group-license-server`.

Overview of Minimal Installations

Using the command line, you can direct the Rational Software Setup program to install and expand the product files to a network location. This location provides a Setup executable from which you can perform a minimal installation on client systems. This installation option installs the files (shared system DLLs and local configuration settings) needed on the client systems to run Rational products (program files and executables) from this network site.

All product files in a Rational Solutions for Windows CD are compressed into .cab files. Before the Rational Software Setup program can offer a minimal installation option, the Setup program needs to expand the .cab files.

Note: The network location that you select must have at least 1.3 GB of space to accommodate the expanded files.

Configuring the Setup Program for Minimal Installations

This section provides the simple instructions for installing and decompressing the Rational product files in a network share area.

- 1 Insert the Rational Solutions for Windows CD in a CD drive.
- 2 Open a command window on your system and enter the `RSSetup` command:

```
<Location>\setup\rssetup.exe -admin:network-path
```

Where *<Location>* is the location of the Rational Solutions for Windows CD and *network-path* is the path to the network share area. The network location can be a UNC name or a mapped drive.

- 3 The **Confirmation** dialog box asks you to start the procedure by clicking **Next**.

A DOS window pops up to display Rational product files as they are installed and decompressed. You do not have to closely monitor this window.

- 4 At the end of the procedure, the **Installation Complete** dialog box asks you to complete the procedure by clicking **Finish**.

Users can now go to the network location and perform a minimal installation from the Rational Software Setup program.

Note: Rational recommends that you set this network location to read-only.

If you have any problems running the Rational Software Setup program, read the following FAQ before you call Rational Customer Support:

Installation Messages

Installation error messages, including messages for silent installations, are displayed in the file `<Install Path>\RSSetup\Error.log`.

Table 16 Silent Installation Messages

Message	Description
Product "ProductName" specified in response file is not contained in the product list.	This message appears when the <code>response.ini</code> file contains an invalid product name.
Unable to open response file.	Typically, this error occurs when the installation procedure cannot locate the <code>response.ini</code> file. Either you have specified an incorrect path or the <code>response.ini</code> file is not in the default location.
Information required to remove the specified product cannot be found. The product may not be removed automatically.	When you tried to remove a product with the <code>/uninstall</code> switch, you either specified a product that is not installed on your system or you incorrectly typed the product name on the command line. Confirm that you are specifying a product on your system. Confirm that you have typed the product name exactly as it appears in the Rational Software Setup program.

Support Information

Contact Rational Support if you have questions about the installation, use, or maintenance of Rational Software products.

Contacting Rational Technical Support on page xi provides Rational Technical Support telephone and e-mail contact information.

This chapter describes the general requirements and procedure for removing Rational Software products from your system.

Preparing to Remove Rational Software

This section provides general requirements for removing Rational Suite or Rational Suite products from your system. It also describes which components the Rational Software Setup program does or does not remove from your system.

- If you plan to move the application to another system, first return the license file to your Rational Software account. To return a license, use Rational AccountLink (www.rational.com/accountlink), the online license management tool. For more information about moving licenses or returning licenses, see the *Administering Licenses for Rational Software* manual.
- Removing an earlier version of the product does not delete your databases, license files, and license server software.
- To remove Rational Software products from a Windows NT or 2000 system, you must have Windows NT administrator privileges on the local machine.
- Make sure that no one is using the application or any associated files. You cannot remove files that are in use.
- The remove procedure removes directory items and registry settings from your system, except directories containing files that you created while using Rational Suite products.
- Sitecheck is automatically installed with many Rational Suite products. The Rational Software Setup program does not remove this product the system.

Additional Requirements

This section gives pointers to product-specific requirements for removing Rational Software, where applicable.

Removing ClearCase LT Server

To completely remove ClearCase LT Server from your system:

- 1 At a command prompt, type **cleartool lsvo** to locate all ClearCase VOB objects. Then enter **cleartool rmvo** to remove the various VOBs.
- 2 Enter **cleartool lsview** to locate all ClearCase view objects. Then enter **cleartool rmview** to remove the various views.
- 3 Enter **cleartool lsstgloc** to locate all ClearCase view and VOB server storage locations. Then enter **cleartool rmstgloc** to remove the storage locations.
- 4 To remove registry values, use **regedit** to remove these lines:
HKLM\Software\Atria\ClearCase\CurrentVersion\ServerSetupComplete
HKLM\Software\Atria\ClearCase\CurrentVersion\CredmapAllowedDomainList
- 5 In the **Control Panel**, remove ClearCase LT Server.
- 6 Delete the ClearCase LT /var directory from the installation directory.

Note: If you do not remove ClearCase LT Server completely and reinstall it later, you will encounter errors when the Server Set-Up Wizard starts.

Removing Rational Suite DevelopmentStudio–RealTime Edition

Follow the instructions for *Removing Rational Software* to uninstall DevelopmentStudio–RealTime.

If you had installed Rational Rose RealTime as a point product, see Chapter 4, “Removing Rational Software”, in the *Installation Guide - Rational Rose RealTime, Windows*.

Removing Rational Testing Products

Use the general removal procedure for Rational Testing products, except for the following:

To	See
Remove a UNIX Test Agent.	“Removing a UNIX Agent” in <i>Installing Rational Testing Products</i> .
Remove the Rational Test Network Driver.	“Removing the Rational Test Network Driver” in <i>Installing Rational Testing Products</i> .

Removing the Rational Unified Process

The Rational Software Setup program does not remove all the files from the Rational Unified Process program folder. You can manually delete any files not removed by the Setup program.

Removing Rational Software

This section provides the general procedure for removing Rational Suite products from your system.

Use the Windows **Add/Remove Programs** control panel to select and remove Rational Suite or Rational Suite products. The Rational Software Setup program removes Rational Software from your system.

Index

A

- additional components, Rational Testing
 - Products 48
- administering licenses 6
- administrator 11
- administrator privileges. *See* Rational Software Setup program

C

- ClearCase LT
 - documentation 44
 - installation procedure 34
 - licensing 7
 - server set-up 41
 - system and software requirements 32
- ClearQuest 14
 - administrator 15
 - ClearCase integration 44
 - ClearQuest Web 45
 - client 15
 - database types 15
 - documentation 15, 45
 - installation requirements 14
 - installing Crystal Reports 44
 - licensing 14
 - Rational e-mail Reader 44
- ClearQuest Web 45
 - Custom/Full option 27
 - licensing 7, 14
- ClearQuest Web with Rational Testing
 - Products 48
- client 11
- compact installation 12
- Crystal Reports
 - ClearQuest reports 44
 - Rational Testing Products 49
- custom installation 12

Custom/Full

- ClearQuest Web 27
- Rational Unified Process
 - e-business extensions 27
 - Microsoft.NET extensions 27
- RequisitePro, database configuration scripts 27
- RequisiteWeb 27

D

- database configuration, RequisitePro 17
- defect reports, Rational Testing Products 49
- DevelopmentStudio RealTime
 - ClearCase compatibility 19
 - documentation 19, 48
 - installation requirements 19
 - test environment 47
 - UML models 47
- disk space, insufficient 11
- documentation
 - ClearCase LT 44
 - ClearQuest 15, 45
 - DevelopmentStudio RealTime 19, 48
 - Rational Testing Products 21, 49
 - Rational Unified Process 22
 - RequisitePro 17, 46
 - Rose 18

E

- e-mail, Rational Reader 44, 46
- Error messages. *See* Troubleshooting
- Errors
 - installation 59
- Ethernet network 21
- evaluator 11

I

- IBM e-business extensions, Rational Unified Process 22
- installation
 - log file 29
 - product identifiers 55
 - Rational Software Setup program 23
- installation procedure 23
- installation requirements
 - ClearQuest 14
 - DevelopmentStudio RealTime 19
 - Rational Suite 8
 - Rational Unified Process 21
 - RequisitePro 16
 - Rose 17
- installation type
 - compact 12
 - custom 12
 - minimal 12
 - typical 12
- installing licenses 6
- installing multiple Rational Suites 7
- installing shared files 13, 28
- installing shared files, RequisitePro 17

L

- License Key Administrator, command line 56
- license order 7
- license server
 - upgrading 6
- license usage order 7
- licensing
 - ClearCase LT 7
 - ClearQuest 14
 - ClearQuest Web 7, 14
 - Rational Suite 10
 - Rational Testing Products 20
 - recommendations 6
 - RequisiteWeb 7, 16

- log file, installation 29

M

- Microsoft.NET extensions, Rational Unified Process 22
- minimal installation 12
- model files 18
- multiple Rational products, installing 7
- multiple response files, silent installation 53

P

- path map variables 18
- PerformanceStudio 6, 24
- post-installation command, silent installation 52
- preparing to install, ClearCase LT 31
- product identifiers 55
- property files 18

R

- Rational ClearCase LT
 - removing 62
- Rational e-mail Reader 44, 46
- Rational Software Setup program
 - administrator privileges 7
 - command syntax 54
 - description 1
 - installation procedure 23
 - installation types 12
 - software use 11
- Rational Suite
 - edition 4
 - installation requirements
 - installing 23
 - licensing 10
- Rational Suite DevelopmentStudio RealTime
 - removing 62

- Rational Testing Products
 - additional components 48
 - ClearQuest Web 48
 - Crystal Reports 49
 - defect reports 49
 - documentation 21, 49
 - licenses 20
 - Rational Robot 49
 - sample applications 48
 - Sybase SQL Anywhere 49
 - Test Agents 49
 - Test Enablers 48
 - Test network driver 48
 - Web Server components 48
- Rational Unified Process
 - documentation 22
 - IBM e-Business extensions 22, 27
 - installation requirements 21
 - Microsoft.NET extensions 22, 27
- Removing Rational software 61
- Removing software
 - administrator privileges 61
 - applications in use 61
 - ClearCase LT 62
 - databases 61
 - directories 61
 - license files 61
 - license server software 61
 - Rational Rose RealTime 62
 - Rational Suite DevelopmentStudio
 - RealTime 62
 - return licenses 61
 - Test Network Driver 62
 - UNIX Test Agent 62
- requesting licenses 6
- requirements to install. *See* Installation requirements
- RequisitePro
 - Custom/Full option 27

- databases 17
- documentation 17, 46
- installation requirements 16
- Rational e-mail Reader 46
- RequisiteWeb
 - Custom/Full option 27
 - licensing 7, 16
- Return licenses 61
- Rose
 - documentation 18
 - installation requirements 17
 - model files 18
 - path map variables 18
 - property files 18

S

- shared files 13, 28
- silent installation
 - License Key Administrator 56
 - multiple response files 53
 - overview 51
 - post-installation command 52
 - product identifiers 55
 - RSSetup command syntax 54
 - whitepaper 51
- Silent installations
 - troubleshooting 59
- software use 11, 28
 - administrator 11
 - client 11
 - evaluator 11
- suite license order 7
- system and software requirements
 - ClearQuest 14
 - DevelopmentStudio RealTime 19
 - Rational Unified Process 21
 - RequisitePro 16
 - Rose 17

T

- Technical support 60
- Token Ring network 21
- Troubleshooting
 - error messages 59
 - installation 59
 - Rational support 60
 - silent installations 59
- typical installation 12

U

- update shared components 28

upgrading

- compatibility 29
- DevelopmentStudio models 47
- license server 6
- licenses 7
- PerformanceStudio 6, 24
- requirements 6

W

- whitepaper, silent installation 51