


WELCOME TO RATIONAL ROBOT

SiteCheck 

Use the sample SiteCheck Web site with this *Try it!* to discover how easy it is to test the structural integrity of your intranet or World Wide Web site. In minutes, you'll understand the power behind Rational Robot's testing capabilities as you record tests for:

- ▶ Internal and external links not found
- ▶ Links to incorrect pages
- ▶ Pages with broken links or pages that have moved
- ▶ Differences between the original and the latest Web site
- ▶ Orphans, viruses, and assertions
- ▶ Slowly downloading pages

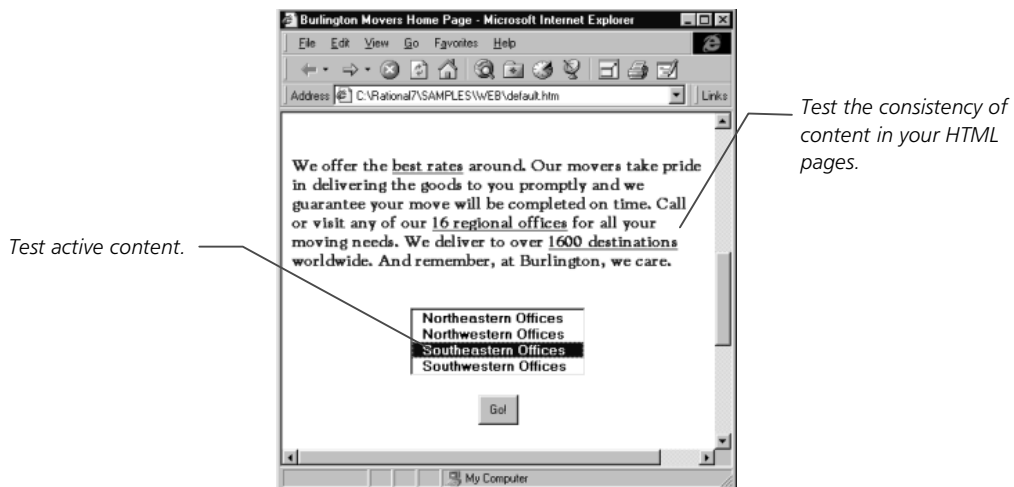
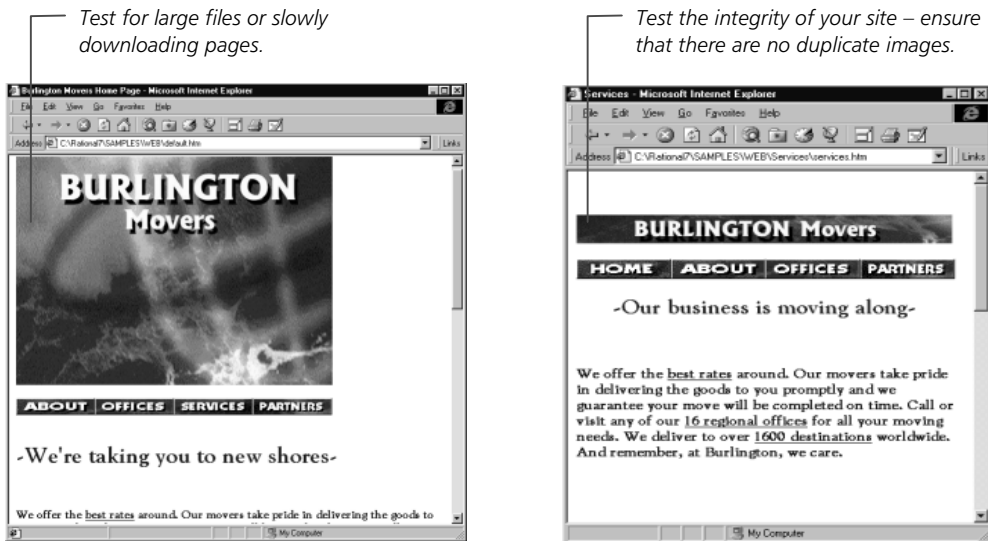
Rational SiteCheck is a powerful yet intuitive tool for testing the structural integrity of your intranet or World Wide Web site. It's designed to help you view, track, and maintain your rapidly changing site. Rational SiteCheck is an integrated component of Rational Robot. SiteCheck provides numerous features including:

- ▶ Support for Netscape Navigator®, Microsoft® Internet Explorer, or the browser of your choice.
- ▶ Automatic tracking and updating of broken links, permanently moved or orphan pages, and pages that are slow to download.
- ▶ Identification and verification of Web pages with active content including ActiveX and Java.
- ▶ Support for Secure Sockets layer (SSL), proxy servers, multiple security realms, and virus checking with McAfee VirusScan® 2.0 or later.
- ▶ A fully functional, color-coded HTML editor and source code browser.

▶ ▶ ▶ Find out how Rational puts quality to the test. ▶ ▶ ▶

Test the sample Web site

These three Web pages display some of the aspects of the sample Web site you can test. The sample Web site is the home page and site of a fictitious moving company Burlington Movers.



Open the sample site

SiteCheck comes with a sample Web site which you can use to learn about the product. During installation, the sample site is installed on your hard disk and is ready for viewing and editing in SiteCheck. SiteCheck can also open any Internet/intranet site when you provide its URL.



Home page for the sample Web site

► ► ► Try this to open the sample site:

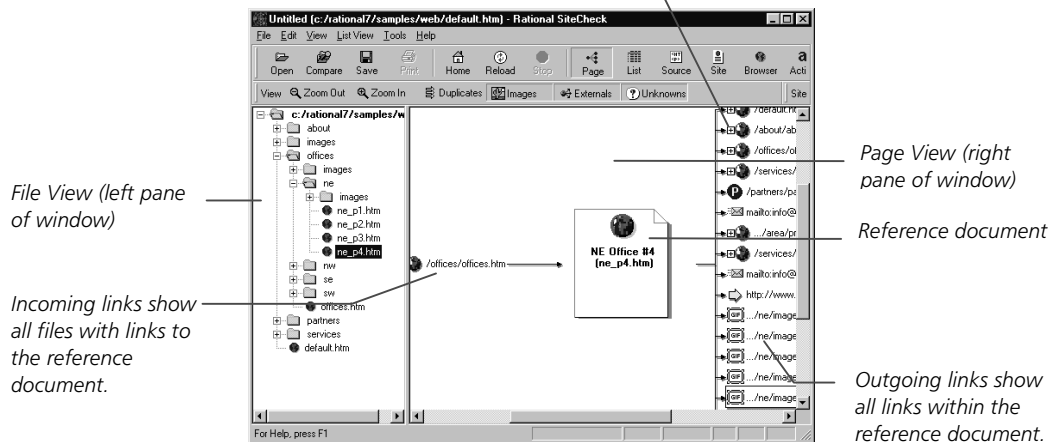
- ❶ From the Windows taskbar, click **SiteCheck**.
- ❷ In the Welcome to Rational SiteCheck dialog box, click **OK**. The Open Site dialog box appears.
- ❸ Click **Local Site** and then specify the path to the sample Web site:
C:\Program Files\Rational\Rational Test 7\Samples\Web\default.htm
You can also click **Browse** and look for this file.
- ❹ Click **OK** to open the sample Web site.
- ❺ If a message asks if you'd like to switch to a view of external links, click **No** so you can follow the examples in this *Try it!*.

View your Web site in SiteCheck

When you first open a site, SiteCheck shows File View in the left pane and Page View in the right pane. These opening views present a clear picture of how your site is physically structured on the hard disk (File View) and logically structured in terms of the HTML hyperlinks (Page View). Understanding the structure of your site is particularly important if you have a number of authors providing new content, or if you have inherited an existing site.

► ► ► Try this to view the structure of a site:

- 1 Click a file in File View. Notice that the file becomes the central document, or reference document, in Page View.
- 2 Double-click a page in Page View to make it the reference document.
- 3 Click a plus (+) sign to see all of the links on that page.



- 4 Place and hold the pointer over any of the files in Page View to see more information about the Web page itself. This information includes the title, the author, the location of the file, and whether the page uses frames, Java, ActiveX, or forms.
- 5 Click the filter buttons to hide or show different file types in Page View.



Filter buttons can reduce visual clutter.

List View

List View offers you control over the display of your site data – you can sort, filter, and print information, and even export List View data. Using preset filters, you can view information such as slowly downloading pages, or pages that contain broken links, images, or sound files. After you have chosen a filter, you can manipulate this information to pinpoint specific pages or files quickly or arrange the information that you need in a report.

► ► ► Try this to view slowly downloading pages:

- 1 Click the **List View** button to view your site in List View.



- 2 Click **List View** → **Defects** → **Slowly Downloading Pages**.

- 3 Scroll to the right to view the download speed columns, including **Actual**, **28.8**, **ISDN**, and **T1**.

Path	Extension	HTTP C	Title	Author
/offices/new_p2.htm	sw_p2.htm	n/a	SW Office #2	Mathia K
/about/stats/stats.htm	stats.htm	n/a	n/a	n/a
/about/about.htm	about.htm	n/a	This is a test	Alexander
/services/office/pla2.htm	pla2.htm	n/a	n/a	n/a
/services/assa/picing/picing.htm	pic.htm	n/a	Picing	Mathia K
/services/home/homeplan.htm	homeplan.htm	n/a	n/a	n/a
/offices/new_p3.htm	ne_p3.htm	n/a	NE Office #3	J. Slavov
/offices/new_p4.htm	nw_p4.htm	n/a	NW Office #4	Don Ber
/services/home/pla3.htm	pla3.htm	n/a	n/a	n/a
/offices/new_p2.htm	se_p2.htm	n/a	SE Office #2	Kevin Pa
/offices/offices.htm	offices.htm	n/a	Regional Off	Kevin Pa
/offices/new_p3.htm	sw_p3.htm	n/a	SW Office #3	Mathia K
/offices/new_p1.htm	nw_p1.htm	n/a	NW Office #1	BB Bovri
/services/office/pla3.htm	pla3.htm	n/a	n/a	n/a
/services/services.htm	services.htm	n/a	Services	Mathia K
/offices/new_p4.htm	ne_p4.htm	n/a	NE Office #4	Don Ber
/default.htm	default.htm	n/a	Burlington M.	Don Ber
/services/home/pla4.htm	pla4.htm	n/a	n/a	n/a
/offices/new_p3.htm	se_p3.htm	n/a	SE Office #3	Mathia K
/services/office/officed.htm	officed.htm	n/a	n/a	n/a
/offices/new_p1.htm	ne_p1.htm	n/a	NE Office #1	BB Bovri

Click a column header to sort by the information in the column. Click again to reverse the sort order.

The default threshold setting for **Slowly Downloading Pages** is 20 seconds, based on the file's download speed over a 28.8 modem. The definition of a slowly downloading page varies from user to user, so the setting for **Slowly Downloading Pages** is variable.

► ► ► Try this to modify your slow pages settings:

- 1 Click **Tools** → **Preferences**, and then click the **Defects** tab.
- 2 Type a new download speed in the **Slow Page Threshold** box (note that the value for file size also changes), and then click **OK**. The list reloads with the new slow pages.

This feature applies even when you are accessing the site locally. All local files download quickly, but SiteCheck tells you the equivalent access rates for users with remote access.

Browser View and Site Properties View

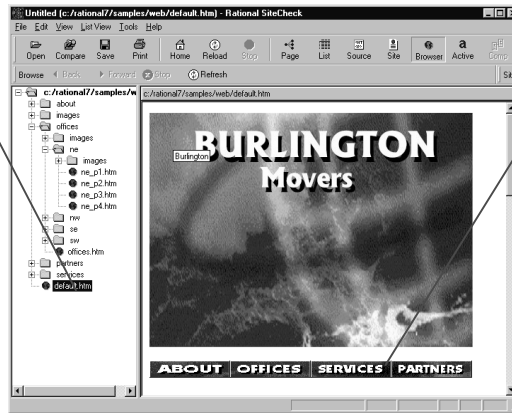
Like Page View, Browser View appears in the right pane of SiteCheck. Browser View offers you the chance to see your site as visitors will see it.

► ► ► **Try this to view your site in Browser View and Site Properties View:**

- 1 Click the **Browser** button to view your site in Browser View.



When you navigate a site in Browser View, the active file is selected in File View. However, navigation outside your site cannot be shown in File View.



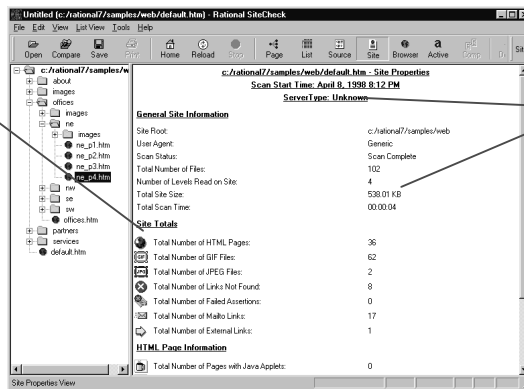
Click any link to browse to that page. You can also browse to external links within Browser View.

Site Properties View appears in the right pane of SiteCheck. Site Properties View displays a summary of your Web site's statistics.

- 1 To view your site in Site Properties View, click the **Site** button.



Site Properties View displays both general site information and totals of specific file types.





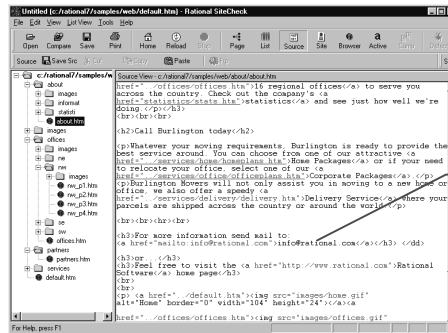
Site Properties View provides important information such as the Total Site Size and Server Type.

Source View

Source View lets you view and edit HTML files. When you use Source View to edit your Web pages, your changes are automatically updated when saved and are reflected in the other views.

► ► ► Try this to edit a file in Source View:

- 1 Select a file in any view.
- 2 Click the **Source** button.

Source
- 3 Type any changes in Source View.
- 4 When your changes are complete, click **Save Src**.


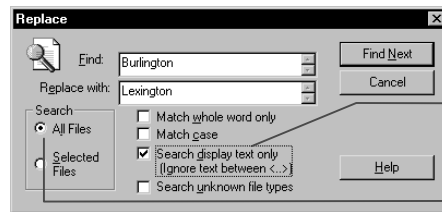


Notice the color coding for links and content types.

You can use **Global Replace** to edit text in Source View. **Global Replace** lets you search for and then replace text or HTML codes across your entire Web site.

► ► ► Try this to find and replace text in Source View:

- 1 Click **Edit** → **Global Replace**. The Replace dialog box appears.
- 2 Enter the text you want to find – e.g., **Burlington**, and the replacement text – e.g., **Lexington**.



Select **Search display text only** to ignore HTML tags.

Click **All Files** to replace text in all files.

- 3 When your choices are complete, click **Find Next**. When the text is found, a list appears with the files that contain the search text and the number of occurrences of the text in each of the files.
- 4 Click the **Edit File** button to replace the text on a file-by-file basis. The file opens in Source View, with the found text highlighted.
- 5 Click the **Replace** button. The text is replaced, and the next instance is highlighted.
- 6 When there are no more instances in the selected file, you can choose to search the next file.

Web site verification points




Using Rational Robot, you can record two types of Web site verification points:

- ▶ Web Site Scan – Use to automatically check the content of your Web site with every revision and to ensure that changes have not resulted in defects. You can check for the following:
 - Internal and external links not found
 - Pages with broken links or pages that have moved
 - Orphans, viruses, and assertions
 - ActiveScan entries
 - Slowly downloading pages
- ▶ Web Site Compare – Use to record a baseline of a Web site and compare that baseline to your Web site at another point in time.

Create a repository

Before you can record a Web site verification point, you must create a repository. The repository contains all of the information about your testing project, including test plans, requirements, results, graphs, and reports. For more information about Rational repositories, see *Using the Rational Administrator* manual.

▶ ▶ ▶ *Try this to create a repository:*

- ❶ Make sure that no applications are open on the desktop.
- ❷ From the Windows taskbar, click **Administrator**.

- ❸ Click the **Create Repository** button to create a new repository.

- ❹ Type a repository path (in this case, C:\repo1), and then click **Next**.
- ❺ Click **Microsoft Access**, and then click **Next**. Continue through the wizard.
- ❻ View your settings, and then click **Finish**.
- ❼ Select **repo1**, and then click **Connect**. 

Start recording with Robot

When you record, you use Robot to scan your Web site through SiteCheck. You launch the recording from Robot. Robot can record both your actions as you navigate through the sample Web site and the verification points that you insert to check on changes to your Web site.

► ► ► Try this to start recording:

❶ Start Rational Robot. From the Windows taskbar, click **Robot**.

❷ Type **admin** for the User ID. (No password is required.)

❸ Click to start recording. Type a name, and then click **OK**.



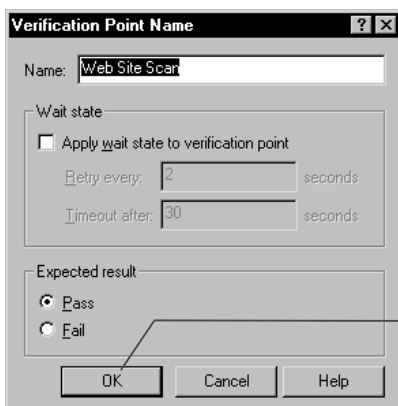
❹ Click to display the GUI Insert toolbar.



❺ Click to start a Web Site Scan or Web Site Compare verification point.



❻ Click **OK**.



Record a Web Site Scan verification point

The Web Site Scan verification point is recorded through a wizard interface. Enter your options for each screen, and then click **Next** to proceed to the following screen. At any time, you can click **Back** to return to an earlier screen and change your options.

▶ ▶ ▶ Try this to record a Web Site Scan verification point:

- 1 Before recording a verification point, you must follow the steps outlined in *Start recording with Robot* on the preceding page of this *Try it!*.

- 2 Click **Local Site**.
The default site is the sample site, found at C:/.../Samples/Web/default.htm.

Please select the site you want to test.

Site Type

Internet Site
http://www.unitedmedia.com/comics/

Local Site
c:/program files/new/rational/siechik/samples/web/default.htm

Previously Saved Site Map
c:/neps/man/Project/DefProj/Script/vp/compare/Web Site Compare.b

< Back Next > Cancel Help

If the site does not appear, click **Browse** to find it.

- 3 Click **Next** to display the **Advanced Options** page.

- 4 Choose your site options, including **Site Root** and **Default Page Name**.

Advanced Options

c:/program files/new/rational/siechik/samples/web/default.htm

Site Root: c:/program files/new/rational/siechik/samples/web/

Internet Site Root:

Default Page Name: default.htm

File Names Are Case Sensitive (Unix)

Read Entire Site

Stop After Level: 5

FTP Mirror... Exclude... Aliases... Realms...

< Back Next > Cancel Help

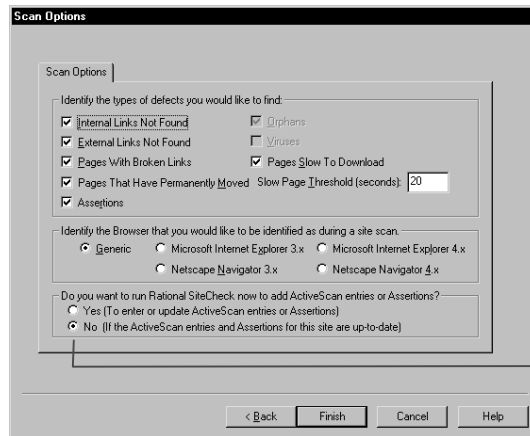
You can choose to read the entire site or stop after a number of levels.

You can also set other advanced options.

- 5 Click **Next** to display the **Scan Options** page.

Record a Web Site Scan verification point (cont'd)

- Choose your scan options and the type of browser that you want to emulate for the scan.



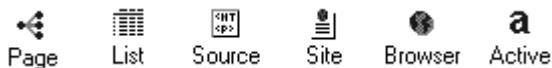
Click **No** (to avoid adding ActiveScan entries for this exercise).

- Click **Finish** to continue recording with Robot, or click **Back** to make changes.
- Click **Stop** when you've finished recording.

The value of verification points becomes apparent when you play them back. During playback, you can identify changes or unintentional errors in your Web site as it evolves. This lets you correct errors before your site becomes public. When you play back a Web Site Scan verification point, SiteCheck scans the site based on the options that you selected when you recorded the verification point. If it finds any defects, the verification point fails. For more information about playing back a verification point, see the *Using Rational Robot* manual.

►►► Try this to view Web Site Scan results:

- After you play back a verification point, the playback is listed in the Rational LogViewer. To examine the results of your Web Site Scan, double-click the event in the LogViewer. SiteCheck starts and displays the **All Defects List View**.
- Click each of the View buttons to see more details about the Web Site Scan. For more information about these views, see the preceding pages of this *Try it!*.



Record a Web Site Compare verification point

Now that you've recorded a Web Site Scan verification point, you can use your knowledge to record a Web Site Compare verification point. SiteCheck provides you with comparison tools that compare any two sites.

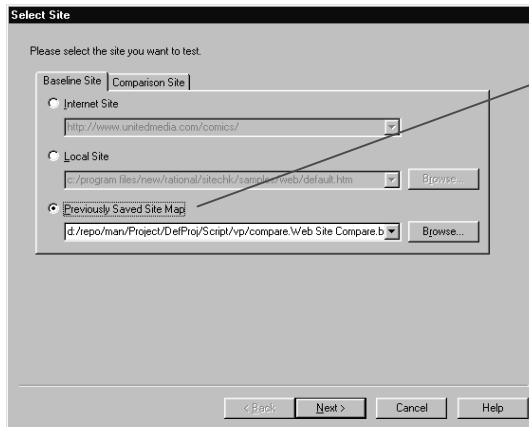
▶ ▶ ▶ Try this to record a Web Site Compare verification point:

❶ Before recording a verification point, you must follow the steps outlined in *Start recording with Robot* in this *Try it!*.

❷ Click the **Baseline Site** tab.

❸ Click the **Comparison Site** tab.

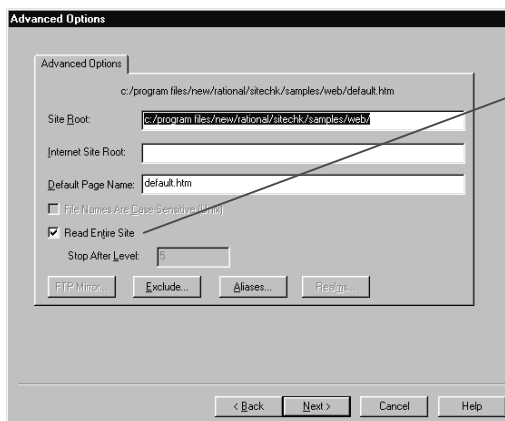
Note: If you are using a site map, make sure that it's the Baseline Site.



Click the site type and type the path.

❹ Click **Next** to display the **Advanced Options** page.

❺ Choose your site options, including **Site Root** and **Default Page Name**.

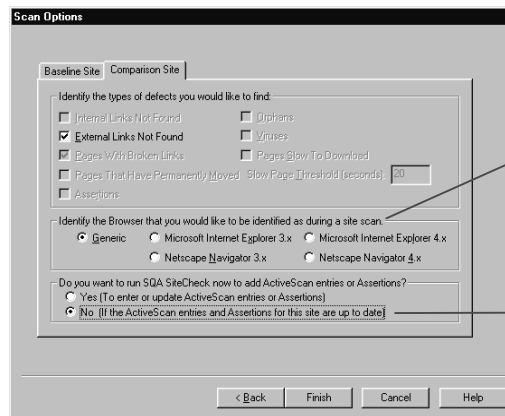


You can choose to read the entire site or stop after a number of levels.

❻ Click **Next** to display the **Scan Options** page.

Record a Web Site Compare verification point (cont'd)

- 7 Set scan options for both Baseline and Comparison sites.



Choose the type of browser that you want to emulate for the scan.

Click **No** (to avoid adding ActiveScan entries for this exercise).

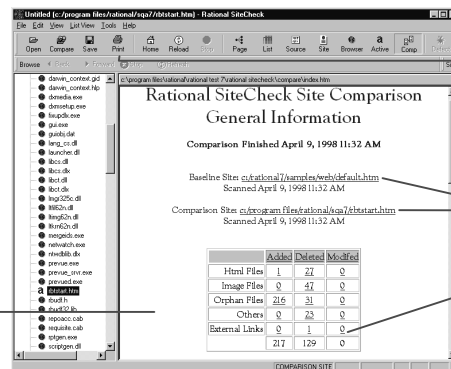
- 8 Click **Finish** to continue recording with Robot, or click **Back** to make changes.
- 9 Click **Stop** when you've finished recording.

Once the recording is complete, you can play back the verification point and load it through the LogViewer to see your results. For more information, see the *Using Rational Robot* manual.

► ► ► Try this to view comparison results:

- 1 When the verification point is played back and loaded through the LogViewer, SiteCheck opens.

Click **View** → **Comparison View** to see comparison results.



Click **Print** to print the report.

Click the links to view either the Baseline or Comparison site.

Click each item to view a detailed list of files and attributes.

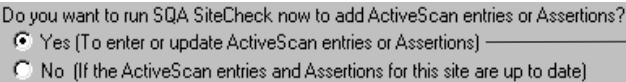
- 2 Click **File** → **Export Comparison** to save the reports in HTML format. Choose a dedicated directory for the reports because the number of files may be large.

Test active content

SiteCheck lets you preview and test forms and other types of active content on your Web site. The first time SiteCheck recognizes a page with a form (or any other active content), it asks whether you want to switch to ActiveScan View. When you test active content in ActiveScan View, you see the results immediately.

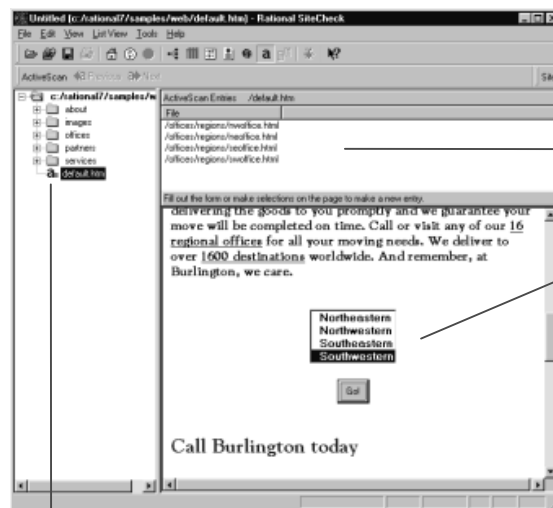
► ► ► *Try this to test active content:*

- 1 You can test active content as part of a Web Site Scan or Compare verification point. When recording with Robot, follow the procedure *Record a Web Site Scan verification point* in this *Try it!*.

- 2  Do you want to run SQA SiteCheck now to add ActiveScan entries or Assertions?
 Yes (To enter or update ActiveScan entries or Assertions) — Click **Yes** to test active content.
 No (If the ActiveScan entries and Assertions for this site are up to date)

- 3 Click **Finish** to continue recording with Robot, or click **Back** to make changes. Once you click **Finish**, SiteCheck opens in ActiveScan View.

- 4 Choose an option from the list of locations, shown on the right, and then click **Go!**



ActiveScan entries are automatically recorded here.

An Active page is shown here. ActiveScan entries are made by performing actions or submitting data into forms.

Note the "a" icon, which shows that the page has active content.

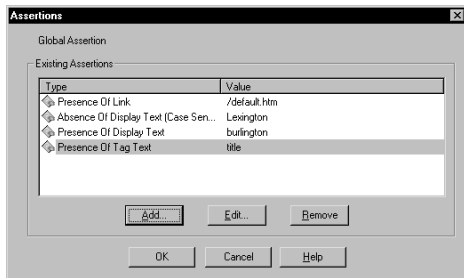
- 5 Once you have made your ActiveScan entries, click **File** → **Exit** to close SiteCheck.
- 6 Click **Stop** when you've finished recording.

Use Assertions for quality control

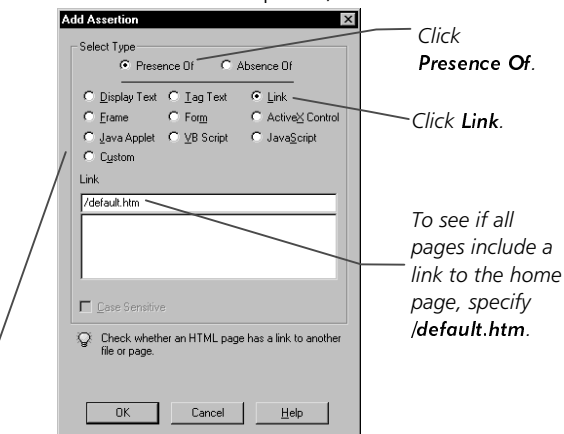
Assertions allow you to set conditions on one page or all pages for analysis. For instance, you can ensure that each page has a link back to your home page, or that each page has a title, or that each sub-page has the correct background. This lets you impose an increased level of quality control on your site.

► ► ► Try this to use Assertions:

- 1 You can create Assertions as part of a Web Site Scan or Web Site Compare verification point. When recording with Robot, follow the procedure *Record a Web Site Scan verification point* or *Record a Web Site Compare verification point* in this *Try it!*.
- 2 Do you want to run SQA SiteCheck now to add ActiveScan entries or Assertions?
 Yes (To enter or update ActiveScan entries or Assertions) — Click **Yes** to create Assertions.
 No (If the ActiveScan entries and Assertions for this site are up to date)
- 3 Click **Finish** to continue recording with Robot, or click **Back** to make changes. Once you click **Finish**, SiteCheck opens in Page View.
- 4 Click **Edit** → **Global Assertions**. The Assertions dialog box appears.
- 5 Click **Add** to create a new Assertion.
- 6 Choose Assertions options, and then click **OK**.



The Add Assertions dialog box lets you specify the type of content you want to test. The options include Display Text, Tag Text, Links, Java Applets, and ActiveX controls.



Click **Presence Of**.

Click **Link**.

To see if all pages include a link to the home page, specify **/default.htm**.

- 7 Once you have created your Assertions, click **OK** to close the Assertions dialog box.
- 8 Click **File** → **Exit** to close SiteCheck.
- 9 Click **Stop** when you've finished recording.

What's next

















You have just explored some of the testing possibilities of Rational SiteCheck. SiteCheck offers a variety of refinements that allow greater precision in testing. To record more verification points, try some of the following:

- ▶ Test access to sites through your corporate firewall. Select the **Proxies** button in the advanced section of the Open dialog box to specify your firewall settings.
- ▶ Exclude portions of a site from a scan. When opening your site, click **Exclude**, and enter the directories you do not want to scan.
- ▶ Create a "snapshot" of your site structure at a given point in time by saving a site map. Click **File** → **Save Site**, enter a Site Map name, and choose a location for the saved file. This operation does not save changes or updates to actual files, but stores an image of your site's structure.
- ▶ Use Rational SiteMonitor to automatically check for defects on your Web site. SiteMonitor lets you run scans of any site, at any time. You can use it to scan your complete site for defects, check your server, compare two Web sites for differences, or compare your site with a site map to check for changes. To open SiteMonitor, click **Tools** → **Rational SiteMonitor**.

This *Try it!* has covered only the basics of using SiteCheck. If you need more information, see the SiteCheck Help.

Icons

Some of the more common icons found in SiteCheck are shown here. For additional icons, see the SiteCheck Help.

	HTML files		JPEG bitmaps		Broken internal links		External links
	Files not yet parsed		Sound files		Unknown file types		Broken external links
	Moved, renamed, or deleted files		Mailto links		Compressed files		Adobe Acrobat Portable Document Format
	Active content, no ActiveScan entries		Active content, with ActiveScan entries		No ActiveScan entries, flagged to be ignored		ActiveScan entries, flagged to be ignored