

CATIA V5 Machining Solutions

Taking productivity to a higher level.....

Steve Ward – IBM PLM Solutions
27th September 2007

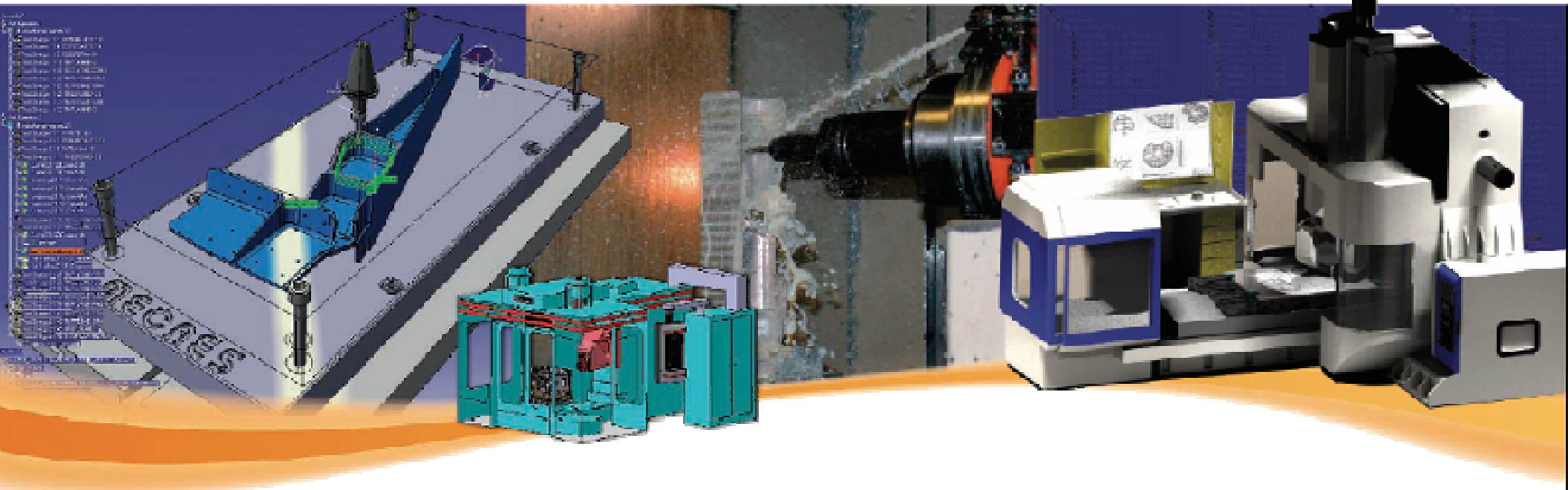
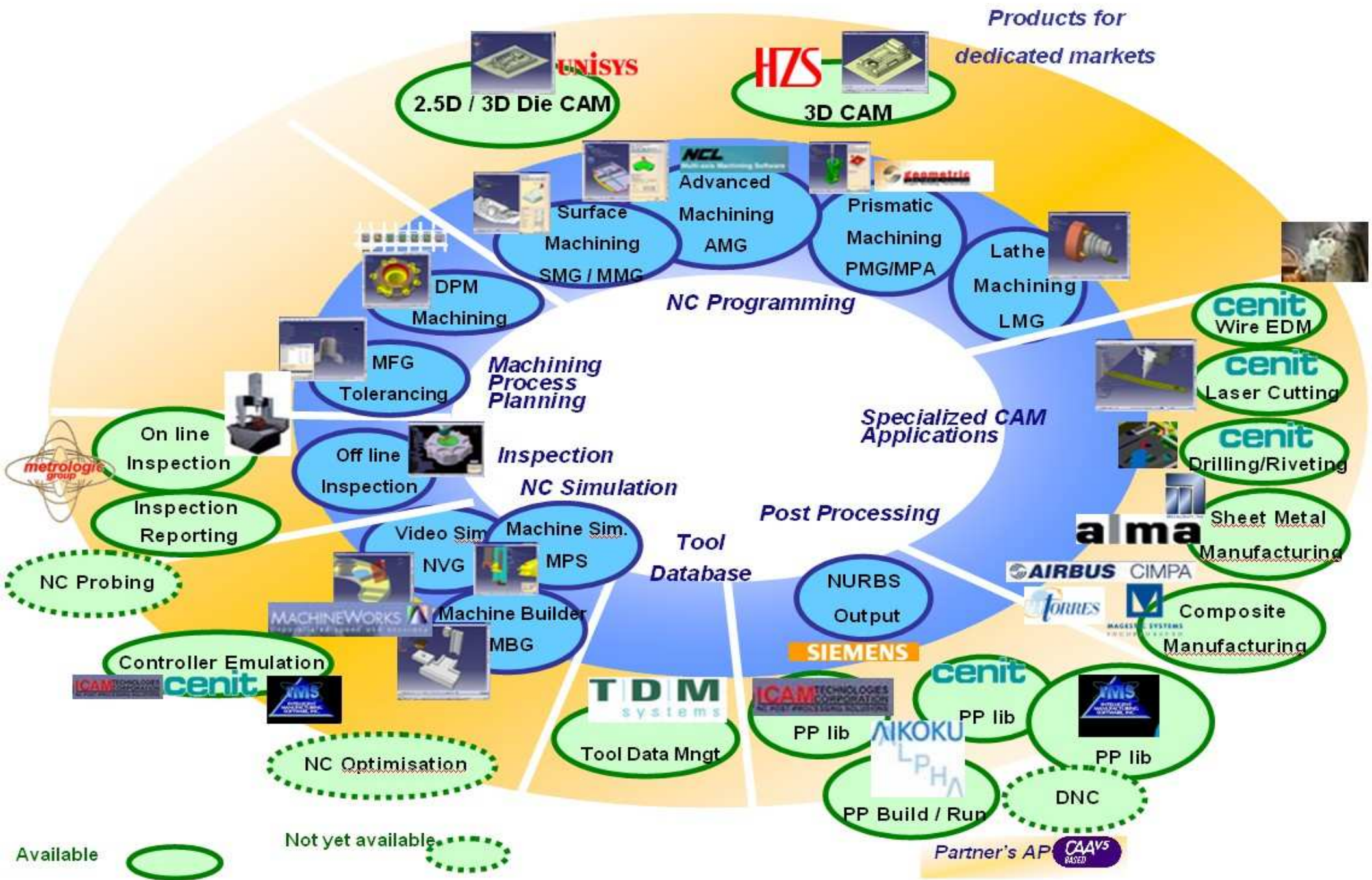


Table Of Contents

CATIA V5 Machining

1	Overview – What is it ?
2	Value Proposition
3	Total Solution
4	Conclusion

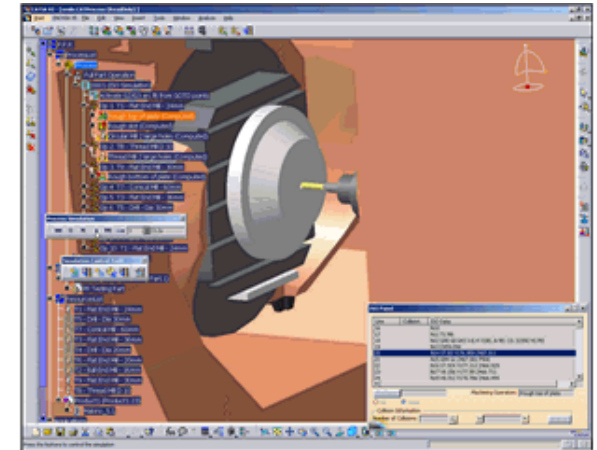


1

CATIA V5 Machining | Overview - What is it?

- A CATIA V5 Fundamental :
 - Natively integrated in V5 architecture
 - Available through family of dedicated applications

- A comprehensive set of capabilities allowing to support a fully integrated and collaborative 3D product design, tooling design and machining preparation and simulation environment:
 - Use a wide set of machining applications (from 2 ½-Axis including Lathe up to advanced 5-Axis)
 - Capture corporate process knowledge
 - Integrate a high level of automation & standardization



1

CATIA V5 Machining | Overview - What is it?

Answer to Key Customer Challenges

- **Develop Competitive Advantage - “Differentiate” :**
 - Manufacture and simulate in one PLM integrated environment
 - Single CAM system covering a wide set of machining applications
 - Capture corporate process knowledge to run user’s best practices
 - High level of automation and standardization
- **Reduce Product Development Cycle - “Be faster” :**
 - Create and re-use generic machining processes
 - Simulate and validate early in the process
 - Part correctly machined the first time without any collision
- **Reduce Product Development Costs - “Be more efficient” :**
 - Improved quality of finished parts
 - Decrease programming time thanks to associativity between Design and Manufacturing
- **Extend Business Volume - “Grow” :**
 - Plan, detail, simulate and optimize machining activities to build better products
 - Optimize the use of machine tools

1

CATIA V5 Machining | Overview - What is it?

CATIA Machining in Productive Use

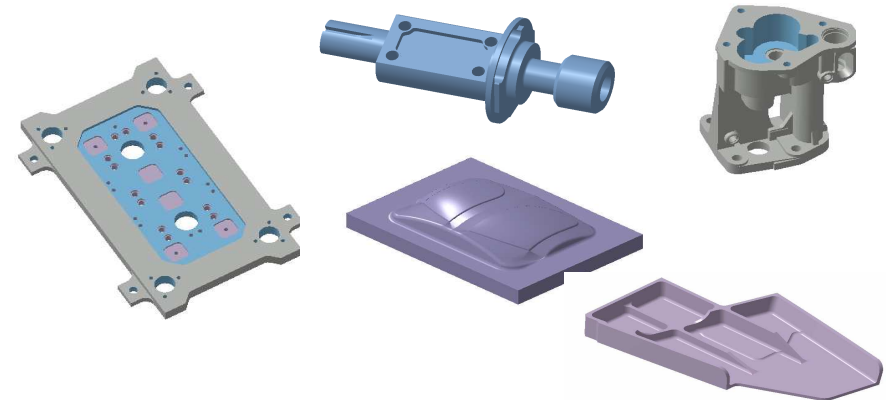
From prismatic to complex parts ...

... in different manufacturing segments ...

- ◆ Prototype manufacturing
- ◆ Tooling manufacturing
- ◆ Part manufacturing

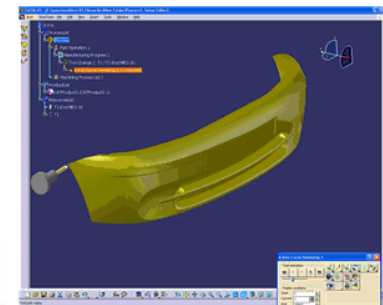
... and in all industries

- Aerospace, OEM & suppliers
 - Airbus, Boeing, Cessna, Dassault Aviation, EADS, Eurocopter, Lockheed Martin, ...
 - Aircraft Philipp, CAMTech, Fokker Special Products, Messier Dowty, Patria, AST, Pratt&Whitney, ...
- Automotive, OEM & suppliers
 - Audi, Daimler Chrysler, Ilmor, Porsche, Renault, TATA motors...
 - Aweba, Bosch, Gedia, Hirschvogel, Michelin Kronprinz, PFO, TRW, ...
- Consumer goods, Industrial Equipments, High-tech...
 - ARC International, ETA/Swatch, Feber, Guy Degrenne, Smoby, ...
 - Duerkopp Adler, Fredk Pollard, Grundfos, Homag, Karl Mayer, ISCAR, BOBST ...
 - Black&Decker, Weidmueller, ...



2 CATIA V5 Machining | Value Proposition

- **Reduced administration and skill efforts by covering a wide set of applications with a single system**
- **Ease-of-learn and ease-of-use due to a very intuitive user interface**
- **High efficiency in part programming due to a tight integration between tool path definition and computation, tool path verification and Output generation**
- **Optimize tool path and machining time by offering a wide set of machining operations**
- **High level of automation and standardization by capturing and reusing proven manufacturing know-how and by CATIA Knowledgeware integration**
- **Effective change management due to a high level of associativity between product engineering, manufacturing processes and resources**



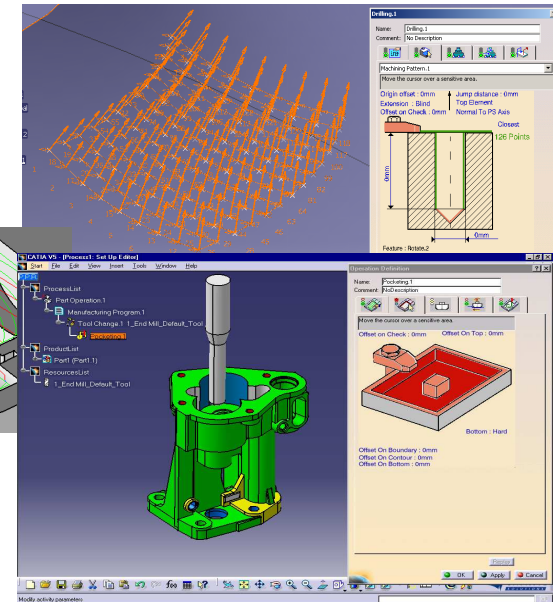
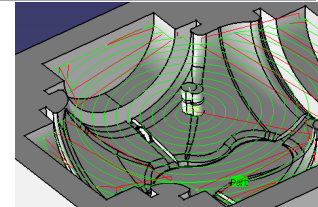
3

CATIA V5 Machining | Total Solution

Core NC Functionality



- Axial Operations
 - Wide set of Drilling cycles
 - Powerful management of machining patterns
 - Integrated with Design Patterns and features
- Prismatic Machining Areas and Prismatic Rework Areas
- Pocketing Operation
- Facing Operation
- Profile Contouring Operation
- Curve Following Operation
- Groove Milling operation
- Point to Point Operation
- Prismatic Roughing operation



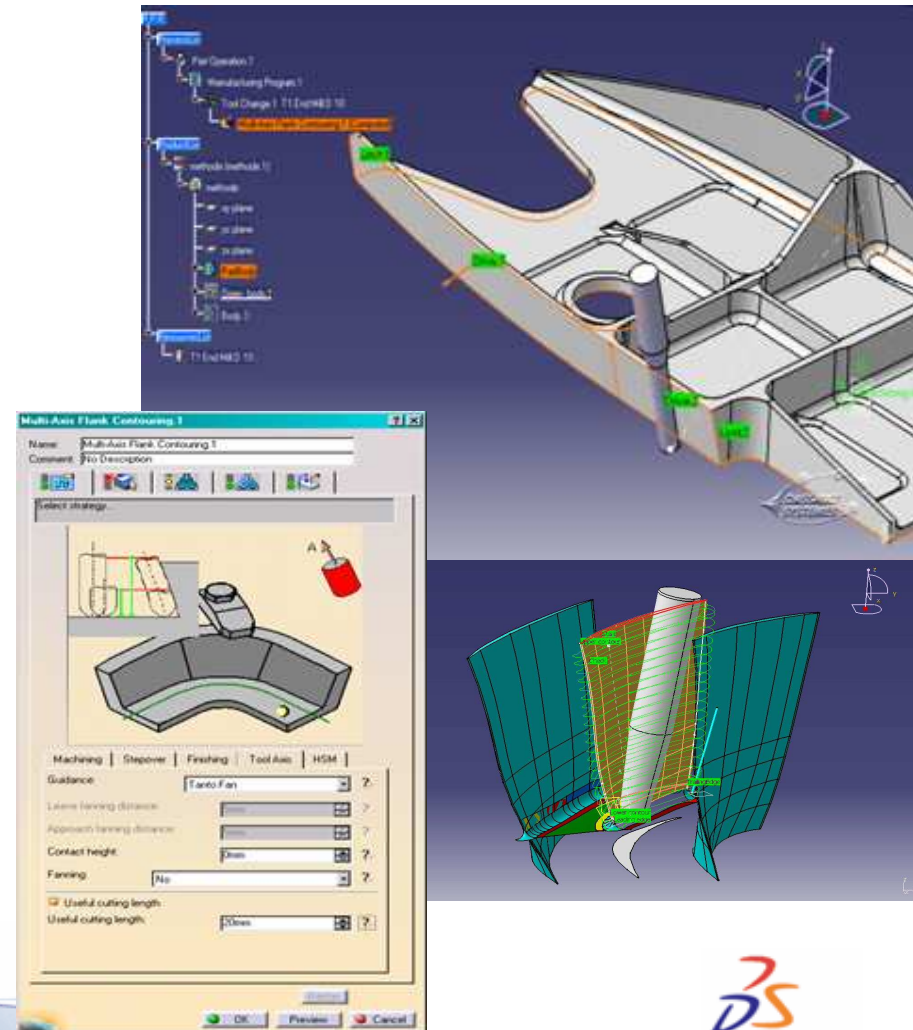
- 3,4 & 5 axis Operations :
 - Roughing
 - Sweep Roughing
 - Roughing Rework
 - Sweeping
 - Pencil Operation
 - Zlevel Machining
 - Contour driven machining
 - Between contour
 - By parallel contour
 - Spine contour

3 CATIA V5 Machining | Total Solution



Core NC Functionality (5 axis Flank Machining)

- Integration of industry proven V4 Technology within V5
- Surpass V4 MMP in ease of use & capabilities
 - Multiple Drive Surfaces
 - Multiple Part Surfaces
 - “Curves as Part” mode
 - Navigation for “Curves as Part” mode
 - Multiple Axial & Radial Passes
 - Contact height control
 - By offset or by recomputing on Axial Levels
 - Fanning management
 - Ability to de-activate fanning for Start/End position
 - Control of User defined Cutting length
 - Joggle and Fillet Management
 - Conical Cornerisation
 - Several Tool Axis Strategies
 - Tanto Fan / Combine Tanto
 - Combine Parem / Mixed Combine
 - Normal to PS
 - Global auxiliary guiding curve



3 CATIA V5 Machining | Total Solution

Post Processing

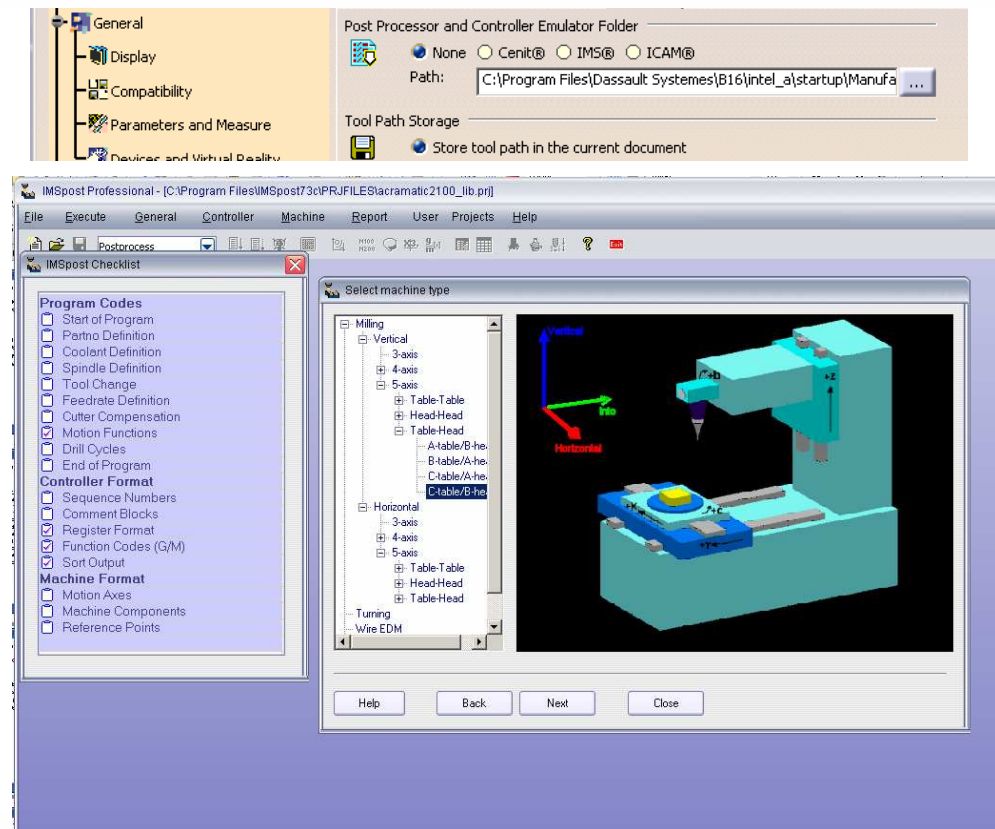
cenit
SOFTWARE

ICAM

IMS
SOFTWARE

CPOST

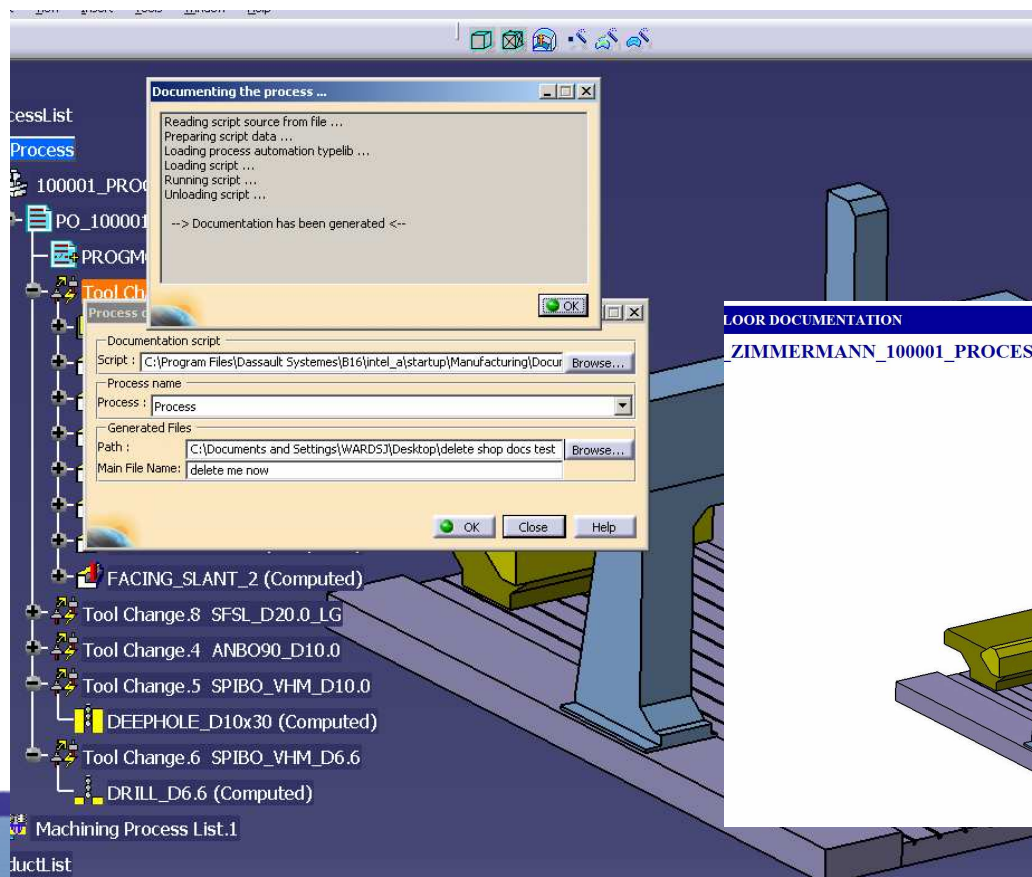
- *Catia V5 supports the Following Postprocessors by directly including the runtime within its software.*
 - *Cenit.*
 - *ICAM.*
 - *IMS.*
- *These products are regarded as the leading post processing companies in the field and this allows V5 customers who have invested in these products to continue to use them directly from within the catia manufacturing environment.*



3 CATIA V5 Machining | Total Solution

Setup Sheets – Shop Floor Documentation

- *Catia V5 includes a Catscript that generates a basic shop floor HTML format document. This includes hyperlinks to all the Part Operations information on toolists, operation types, feeds, speeds, etc, etc.*
- *This script can be modified if desired.*

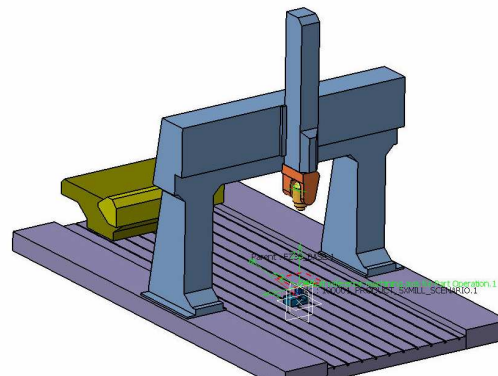


SHOP FLOOR DOCUMENTATION
 _MPS_ZIMMERMANN_100001_PROCESS_5XMILL_SCENARIO.CATProcess

Part operation : 100001_PROCESS_5XMILL_SCENARIO

PO_100001

SHOP FLOOR DOCUMENTATION
 ZIMMERMANN_100001_PROCESS_5XMILL_SCENARIO.CATProcess



PROGMODE/FRAME
 Type : Post-Processor Instruction

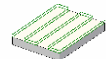


Tool Change.3
 Type : Tool Change



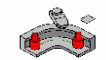
Tool : ECKMKM_D50
 type : End Mill

FACING_TOP
 Type : Facing



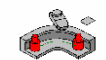
Tool : ECKMKM_D50
 type : End Mill

FACING_Y_PLUS
 Type : Profile Contouring



Tool : ECKMKM_D50
 type : End Mill

FACING_X_PLUS
 Type : Profile Contouring



Tool : ECKMKM_D50
 type : End Mill



3 CATIA V5 Machining | Total Solution

Setup Sheets – Shop Floor Documentation

- There are other alternatives to the standard script.....
- With the openness of V5 and the use of Visual Basic it is possible to create bespoke templates, which will provide individual manufacturing areas the ability to customise and support their own shop documentation needs.

The screenshot displays the CATIA V5 Shop Floor NC Setup Documentation interface. On the left, a tree view shows 'Drawing1', 'Sheet.1', and 'Front view'. The main window is titled 'Sheet.1' and contains a 'Shop Floor NC Setup Documentation' dialog box. The dialog box has two buttons: 'Create Drawing Sheets' and 'Populate Empty Fields'. Below these is a 'Message Console' with the text: 'Depress the 'Create CAT Drawing Doc' button IF the CAT drawing is open and has a View of the product'. At the bottom of the dialog are 'Delete', 'Help', and 'Cancel/Close' buttons, along with the IBM PLM Solutions logo and the text 'Designed by Steve Ward'.

To the right of the dialog box is a technical drawing of a part, labeled 'PO_100001' and '2 off 2'. The drawing includes a table of parameters:

Diameter	Tip Radius
50mm	0.4mm
Length - G1	Input
Tool Type	ECOM_050
Toolpath type	MfBackAndForth
Tolerance	0.1mm
Cutting Speed	5000m_min
Plunge Speed	5000m_min
RPM	1500rpm_min
Length - G2	Input
Diameter 2 - G2	Input
Diameter 3 - G3	Input

Below the table are sections for 'Programmer Notes' (Insert notes here) and 'Operator Notes'. The drawing also shows a 3D model of the part being machined, with a tool path overlaid. The bottom right of the screenshot shows a window titled '100001_PRODUCT_5MILL_SCENARIO' with a '1 off 2' label. This window contains a 'Finished Block Sizes' table, a 'Scale: 1:4' label, and a 'Machine' table:

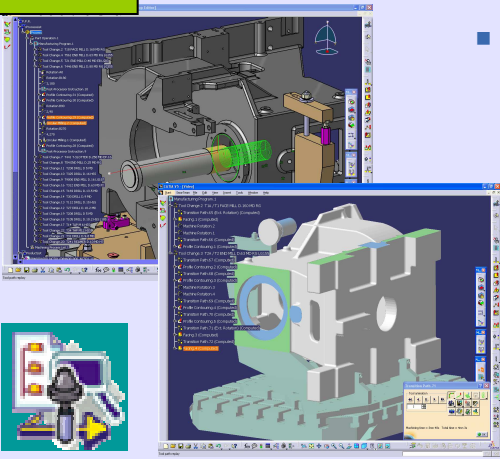
Machine	...
Program Directory	...
Part	10001_PRODUCT_5MILL_SCENARIO
CAD Model	...
Date	...
Programmer	...

3

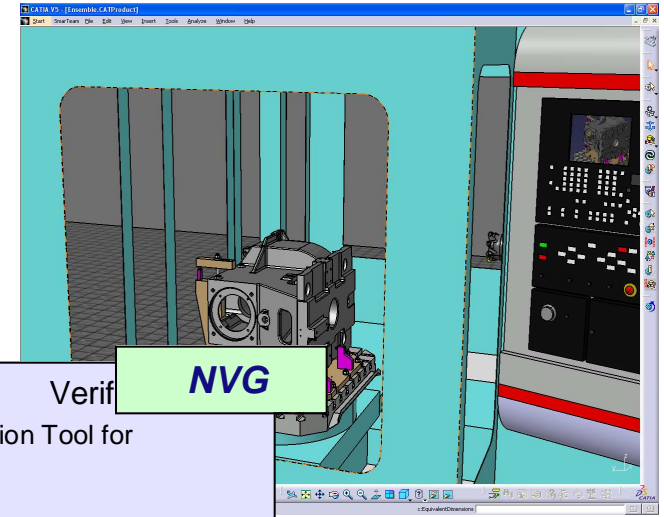
CATIA V5 Machining | Total Solution

V5 integrated Machining Simulation Portfolio

NCG

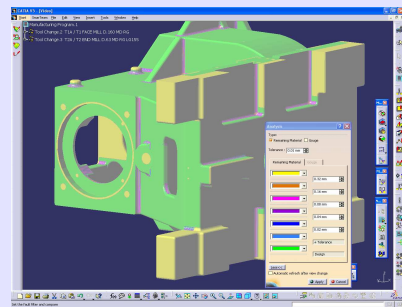


- NC Manufacturing Review : Part Verification via Video/Photo
- Material Removal Simulation
- Works on CATIA Tool path
- Works on ISO Code



NVG

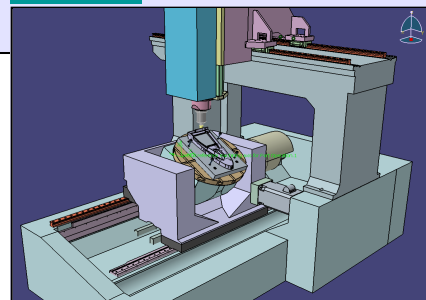
- NC Manufacturing Verification
- Analysis and Validation Tool for Machined Parts



MSG

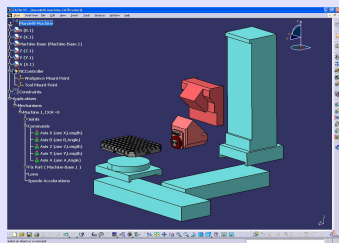
NC Machine Tool Simulation

- Works on CATIA Tool path
- Works on ISO Code
- Material removal at V5R17



MBG

- NC Machine Tool Builder
- Resource modeling tool (NC Machine, Peripheral Device)



4 Conclusion : CATIA V5 Machining

- **Native V5 PLM Fundamental**
- **Accessible to All**
- **Providing Superior Value to:**
 - Compete more effectively and produce parts quicker
 - Improve quality of finished parts
 - Optimize the use of your machine tools
 - Better link between design and manufacturing as well as a better collaboration within the manufacturing team to increase the standardization and capitalize on users know-how Capture
- **Scalable Implementation**

Now make it yours...

