



IBM Software

IBM Software: Wybrane technologie dla sektora MSP

Jarosław Jackowiak

Software IT Architect

IBM Software Group

Jaroslaw.Jackowiak@pl.ibm.com

Dlaczego IBM Software



- Otwartość.
- Skalowalność.
- Bezpieczeństwo.
- Ukierunkowanie na branże.

Produkty i rozwiązania IBM Software pomagają klientom być bardziej innowacyjnym i elastycznym, poprzez lepsze wykorzystanie istniejących zasobów i kontrolowanie kosztów inwestycji informatycznych.

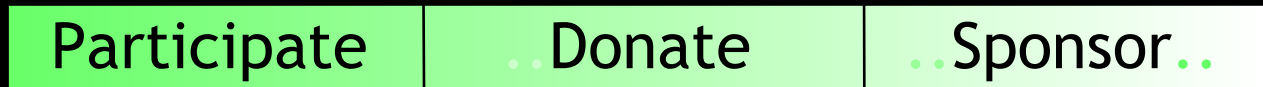
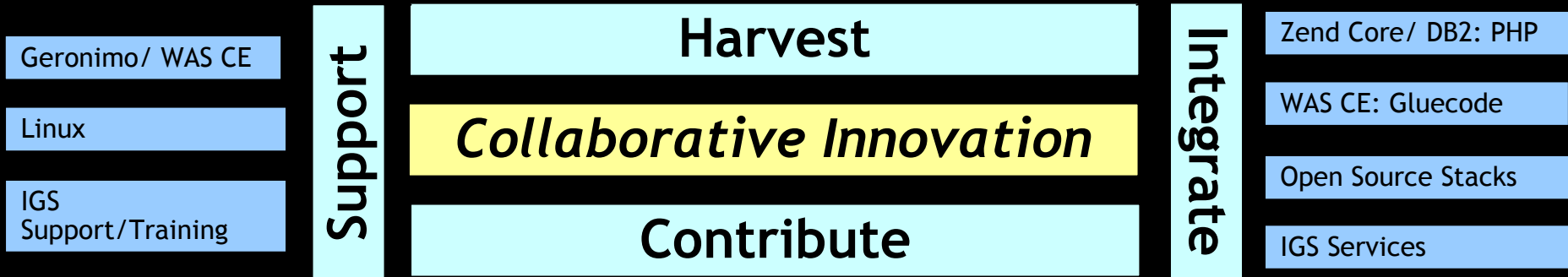
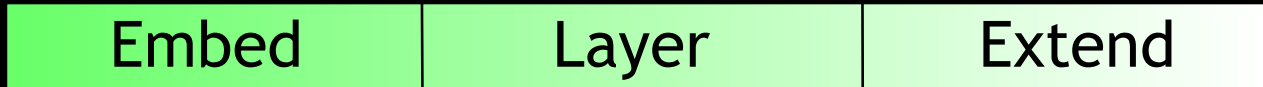


IBM and Open Source: Products & Technologies

- Apache=>WebSphere
- Derby=>Cloudscape
- Eclipse=>Workplace
- Geronimo=>Gluecode

- Linux=>IBM middleware
- Linux=>IBM servers
- Linux=>Applications
- Eclipse=>Rational

- Geronimo=>WAS
- Derby=>DB2
- Eclipse=>Rational
- RUP subset =>RMC



- Linux
- Apache, Geronimo
- Eclipse
- Globus
- Xen

- Eclipse
- Derby
- Firefox accessibility
- RUP subset

- OSDL
- Patent Commons
- eclipse.org
- aperi.org

IBM Software

Dostarcza wielu ciekawych możliwości poprzez pięć mocnych marek

Tivoli. software

Bezpieczne zarządzanie infrastrukturą IT i dostępem do zasobów

Lotus. software

Aby uczynić wielu ludzi...
Bardziej produktywnymi...
W kontekście ich codziennej pracy

DB2. Information Management Software

Zarządzanie informacją i zawartością – bezpieczeństwo i udostępnianie danych

WebSphere. software

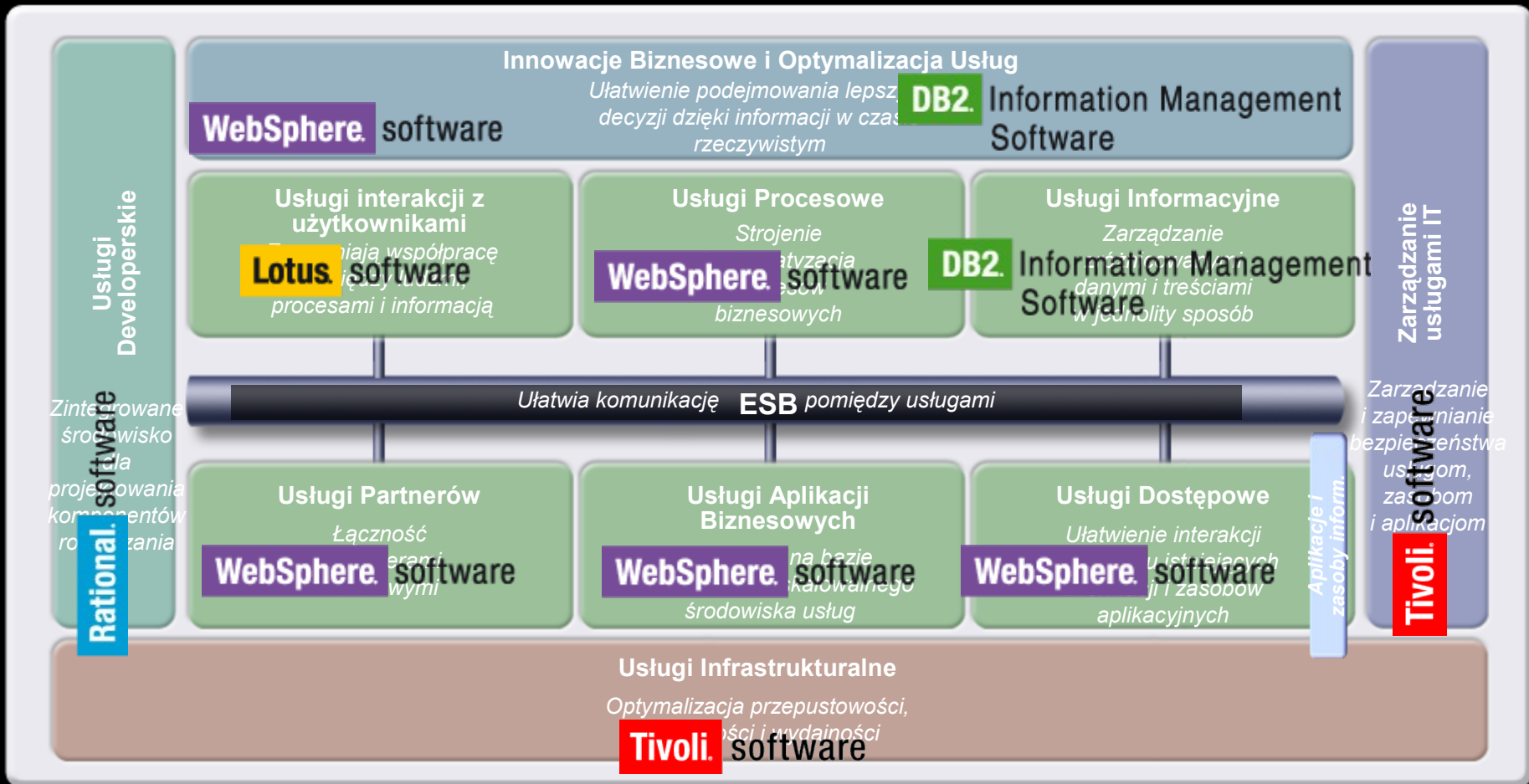
Elastyczna integracja: procesów, systemów i usług

Rational. software

Proces wytwarzania oprogramowania zorientowany na biznes i procesy oraz zarządzanie projektami



Architektura Referencyjna Platformy Integracyjnej SOA



Oferta IBM Software widziana z lotu ptaka

Software and System Development Rational software	Integration and Application Infrastructure WebSphere software	Integrating Data and Content DB2 Information Management Software	Collaboration and Human Interaction Lotus software	IT Service Management Tivoli software
<p>Requirements & Analysis</p> <ul style="list-style-type: none"> • Reduce project risk with requirements management and business, use case and data modeling • Competitors include: Mercury, Borland, Serena/Merant, Telelogic <p>Design and Construction</p> <ul style="list-style-type: none"> • Improve productivity in code-centric, model-driven, and rapid application development • Competitors include: Borland, MS, Telelogic, Compuware <p>Software Quality</p> <ul style="list-style-type: none"> • Improve software functionality, reliability, and performance throughout the development project. • Competitors include: Mercury, Borland, Serena/Merant, MS, Telelogic, Compuware <p>Process and Portfolio Mgmt.</p> <ul style="list-style-type: none"> • Implement and manage enterprise processes and investments using proven tools and practices. • Competitors include: Mercury, Borland, Serena/Merant, Telelogic <p>Software Config. Mgmt.</p> <ul style="list-style-type: none"> • Manage change and complexity with version control, defect tracking and workflow management • Competitors include: Mercury, Borland, Serena/Merant, Telelogic 	<p>Application and transaction infrastructure</p> <ul style="list-style-type: none"> • Build, deploy and run applications in a proven, secure and flexible environment. • Competitors include: BEA, Oracle, SUN, Microsoft.NET, SAP, Borland <p>Application transformation</p> <ul style="list-style-type: none"> • Leverage legacy applications and information in new business processes. <p>Business integration</p> <ul style="list-style-type: none"> • Improve business responsiveness with end-to-end integration across and beyond the enterprise. • Competitors include: Tibco, WebMethods, BEA, See Beyond <p>Commerce</p> <ul style="list-style-type: none"> • marketing and sales processes across multiple channels. • Competitors include: MS, ATG, Oracle, Broadvision <p>Mobile and speech middleware</p> <ul style="list-style-type: none"> • Extend access to business processes, applications and information to anyone anywhere. <p>Product Information Management</p> <ul style="list-style-type: none"> • Provide a single, integrated source of product information for use across the value chain. 	<p>Database Servers</p> <ul style="list-style-type: none"> ☒ Build the foundation for information on demand to meet the full range of your business needs. ☒ Competitors include: Oracle, Sybase, Microsoft, Teradata <p>Database Tools & Utilities</p> <ul style="list-style-type: none"> • and DB2 using tools designed to meet your needs. • Competitors include: Oracle, Sybase, Microsoft, Teradata <p>Content Management and Discovery</p> <ul style="list-style-type: none"> • Manage volume and capture the value of all information contained within multiple content types. • Competitors: Mobius, Oracle <p>IBM Data Warehousing and Analysis</p> <ul style="list-style-type: none"> • Gather, manage & analyze data, generating information to develop insight for informed decisions. <p>Information integration</p> <ul style="list-style-type: none"> • Collect and integrate diverse and distributed information in real time across your enterprise. • Competitors include: Informatica, Oracle, Business Objects, BEA. <p>Master Data Management</p> <ul style="list-style-type: none"> ☒ Create and maintain consistent, complete, and accurate business data for 	<p>Appl. Development & Portal</p> <ul style="list-style-type: none"> • Integrate and extend your Lotus Domino, WebSphere® Portal and IBM Workplace investments. <p>Learning</p> <ul style="list-style-type: none"> • Manage training programs and deliver a variety of learning experiences to your users. <p>Messaging</p> <ul style="list-style-type: none"> • Access messaging solutions with maximum flexibility for your unique business needs. <p>Real-time and Team Collaboration</p> <ul style="list-style-type: none"> • Improve efficiency with instant messaging, presence awareness, Web conferencing and team spaces. <p>E-forms, Document and Web Content Mgmt</p> <ul style="list-style-type: none"> • Create, organize, share, and publish the right information for the right people - on demand. <p>Mobile and Enterprise Access</p> <ul style="list-style-type: none"> • Extend the reach of your information through remote access with wireless devices. <p>Competitors include: Microsoft, eRoom, WebEx</p>	<p>Security Management</p> <ul style="list-style-type: none"> • Ensure compliance to identity and access control policies for IT resources and services. • Competitors include: CA, SUN, Novell, Microsoft, HP <p>Server, Network and Device Mgmt</p> <ul style="list-style-type: none"> • Optimize availability and performance and automate the provisioning of IT infrastructure resources. • Competitors include: HP, BMC, CA <p>Business Application Management</p> <ul style="list-style-type: none"> • optimize application performance and service levels. • Competitors include: Mercury, Wily (CA) <p>IT Service Management</p> <ul style="list-style-type: none"> • Innovation, execution and leadership to manage the business of IT. • Competitors include: BMC, HP, CA <p>IT Process Management</p> <ul style="list-style-type: none"> • Automate critical IT processes across operational silos. • Competitors include: Microsoft, CA, HP <p>Storage Management</p> <ul style="list-style-type: none"> • Backup, restore, protect and optimize your storage infrastructure and data. • Competitors include: EMC, Symantic <p>Mainframe Management</p> <ul style="list-style-type: none"> • Integrating systems management solutions for optimizing and securing mainframe environments.
Windows	Linux	AIX	Solaris	HP-UX
OS/400		OS/390		z/OS

Wspólne cechy oferty oprogramowania Express:

- Funkcjonalność porównywalna z pozostałą ofertą,
- Stosunkowo niska cena,
- Łatwość instalacji, uproszczone zarządzanie,
- Prekonfigurowane środowisko,
- Niskie koszty eksploatacji,
- Ograniczenia licencyjne (procesory, liczby użytkowników)
- Ograniczenia skalowalności (klastrowanie, rozdział obciążenia)
- Systemy operacyjne: Linux, ew. Windows

Zestawienie oferty IBM Software Express

Lotus. software

Tivoli software

WebSphere software

DB2 Information Management Software

IBM Lotus Domino
Collaboration Express

IBM Tivoli Identity
Manager Express

WebSphere Application
Server Express

DB2 Express (max 2
CPU, Windows and
Linux)

IBM Lotus Domino
Messaging Express

IBM Tivoli Monitoring
(ITM) Express

WebSphere Commerce
Express

DB2 Express-C

IBM Lotus Domino Utility
Express

IBM Tivoli Provisioning
Manager (TPM)
Express

WebSphere Partner
Gateway Express

IBM WebSphere Portal
Express

IBM Tivoli Storage
Manager Express

WebSphere Integration
Connect Express

WORKPLACE FORMS
SERVER EXPRESS

IBM Tivoli Continuous
Data Protection
(CDP) for Files

WORKPLACE FORMS
VIEWER EXPRESS

Rational. software

Lotus Domino Collaboration Express

Kluczowe cechy:

- ✍ Lotus Domino Server
- ✍ Domino: e-mail, planowanie grupowe, fora dyskusyjne i grupowe miejsca pracy oraz wszystkie możliwości Domino w zakresie tworzenia aplikacji dodatkowych.
- ✍ Dostęp dla klientów zawiera: Lotus Notes lub Domino Web Access (iNotes), Domino Access for MS Outlook, e-mail POP3 i IMAP



***Tylko i wyłącznie
nowi klienci
Lotus***

- ✍ Windows, Linux, iSeries, Sun Solaris, AIX



Lotus Domino Messaging Express

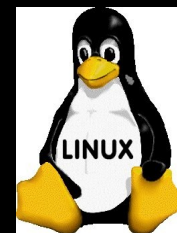
Kluczowe cechy:

- ✍ Lotus Domino Mess Server
- ✍ Domino: e-mail, planowanie grupowe, fora dyskusyjne i grupowe miejsca pracy
- ✍ Zintegrowany Instant Messaging
- ✍ Dostęp dla klientów zawiera: Lotus Notes lub Domino Web Access (iNotes), Domino Access for MS Outlook, e-mail POP3 i IMAP Messaging

Lotus software

Serwer Mailowy bez aplikacji Domino

- ✍ Windows, Linux, iSeries,
- ✍ Sun Solaris, AIX, OS/400, zOS



Lotus Domino Utility Express

Kluczowe cechy:

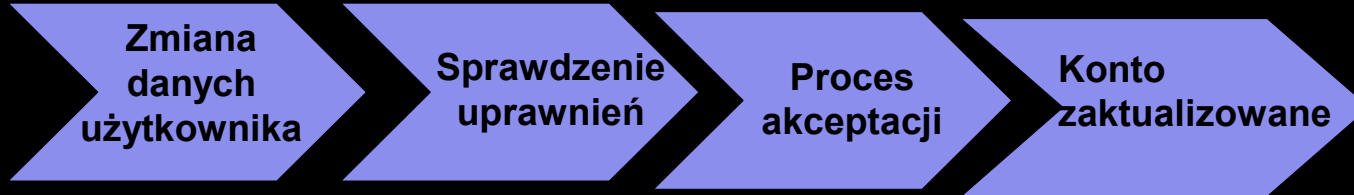
- ✍ Tani model licencjonowania na procesory wraz z ułatwioną instalacją i uproszczonymi opcjami administracji.
- ✍ Aplikacje oparte na technologii Domino bez potrzeby stosowania licencji klienckich (CAL)
- ✍ Wsparcie dla przeglądarek WWW i klientów Notes (kupowanych oddzielnie)
- ✍ Szybki rozwój własnych aplikacji oraz ponad 100 dostępnych aplikacji gotowych do zastosowania

Tylko aplikacje (bez indywidualnych skrzynek pocztowych użytkowników)

- ✍ Windows, Linux, iSeries, Sun Solaris, AIX



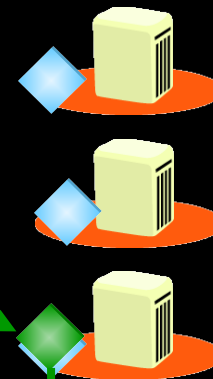
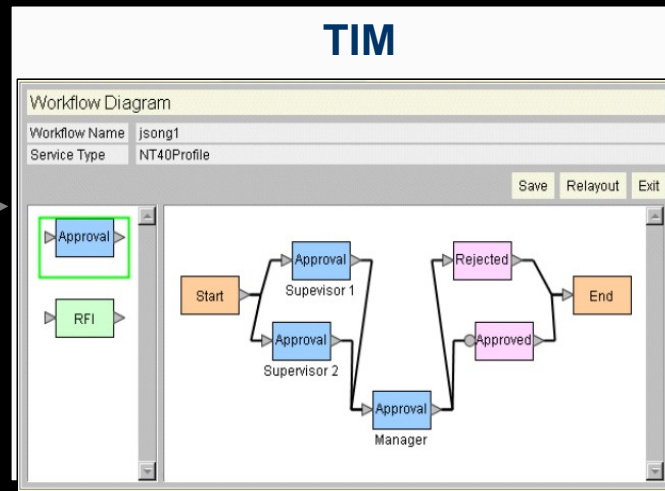
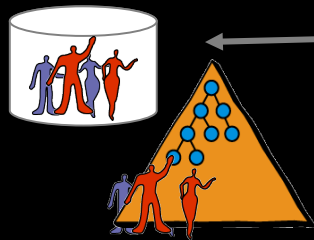
Zarządzanie tożsamością: Tivoli Identity Manager



Wykrycie i poprawienie lokalnych zmian uprawnień

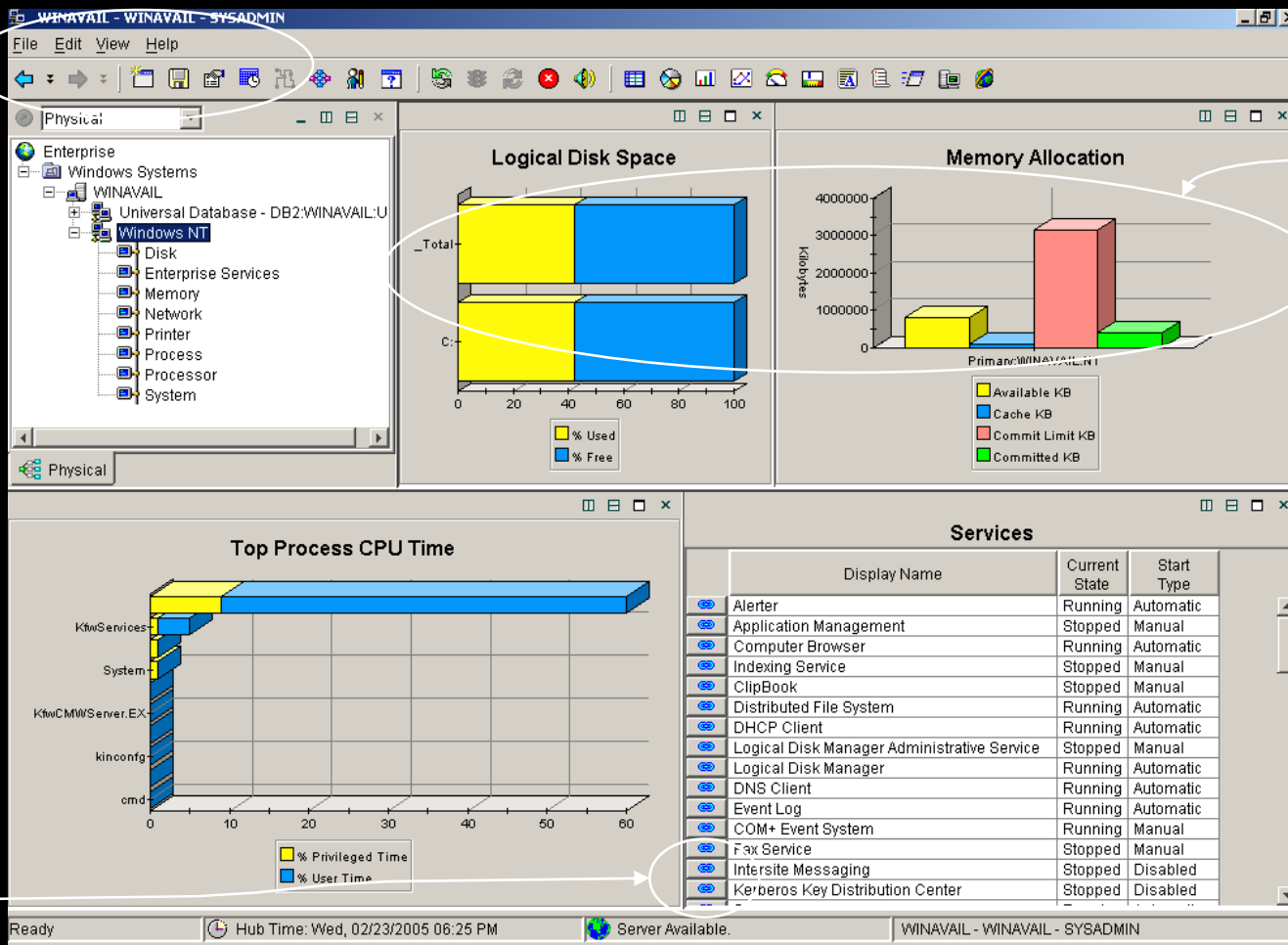


Konta na 70 różnych typach zarządzanych systemów. Możliwe dodanie własnych aplikacji i portali www



Czym jest Tivoli Monitoring?

Rozwiązanie do zarządzania fizycznymi zasobami z jednej konsoli



Łatwy w
użyciu
interfejs

Personalizowany
widok

Łączy

Tivoli Storage Manager Express

Wartość dla klienta

- Łatwa instalacja, konfiguracja i użycie zapewnia szybki zwrot z inwestycji (Time to value)
- Zminimalizowane użycie sieci
- Skierowany do rynku SMB
- Niska cena wejścia – bardzo konkurencyjna cena

Własności/Funkcje

- Instalacja poniżej 1h, 2 CD, Default'owe ustawienia, discover urządzeń
- Możliwość upgrade'u do TSM – ten sam kod bazowy, łatwy punkt wejścia w rodzinę TSM
- Kopie Point-in-time na przenośne media do składowania off-site storage
- Ułatwiona rotacja taśm przy użyciu popularnych metod Grandfather/Father/Son (GFS)
- Oparty o dyski backup incrementalny pozwala na rotację nośników off-line

IBM DB2 Express

- Zaprojektowana do średnich obciążeń produkcyjnych zaraz po instalacji
- Zgodność z otwartymi standardami
- Autonomiczne funkcje: Self-tuning, self-configuring self-protecting, aby obniżyć TCO
- Łatwość użytkowania
- Uproszczona instalacja
- Nie wymaga dedykowanego administratora
- Wsparcie dla popularnych API oraz IDE
- Wybór platform: Windows, Linux

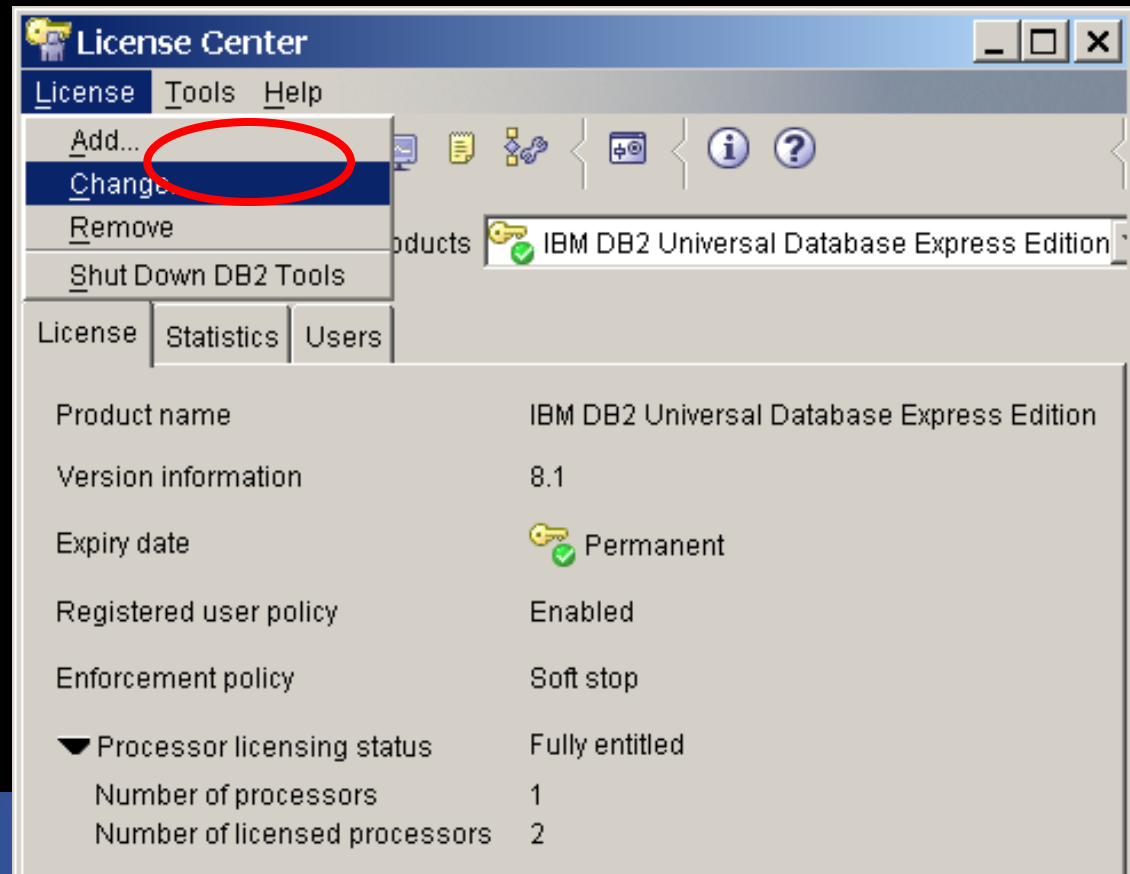


“ DB2 UDB Express is the ideal information management platform for SMBs. It’s priced just right, provides the right functions and is a complete software solution—extensible, flexible, and easy to install, integrate and use.

—Pete Pietrangelo, Software Sales, S & P Solutions”

Upgrade w DB2 Express

- Ten sam kod co pozostałe bazy DB2 dla Windows, Linux i Unix
- Aplikacja napisana dla jakiegokolwiek bazy z rodziny DB2 jest przenaszalna na inną edycję na jakąkolwiek platformę (z wyjątkiem MainFrame)
- Jeśli aplikacja rośnie, tak samo może rosnąć baza danych pod aplikacją
- Wystarczy zmienić klucz licencyjny (Licence Key)



Oferta IBM Software widziana z lotu ptaka

Software and System Development Rational software	Integration and Application Infrastructure WebSphere software	Integrating Data and Content DB2 Information Management Software	Collaboration and Human Interaction Lotus software	IT Service Management Tivoli software
<p>Requirements & Analysis</p> <ul style="list-style-type: none"> Reduce project risk with requirements management and business, use case and data modeling Competitors include: Mercury, Borland, Serena/Merant, Telelogic <p>Design and Construction</p> <ul style="list-style-type: none"> Improve productivity in code-centric, model-driven, and rapid application development Competitors include: Borland, MS, Telelogic, Compuware <p>Software Quality</p> <ul style="list-style-type: none"> Improve software functionality, reliability, and performance throughout the development project. Competitors include: Mercury, Borland, Serena/Merant, MS, Telelogic, Compuware <p>Process and Portfolio Mgmt.</p> <ul style="list-style-type: none"> Implement and manage enterprise processes and investments using proven tools and practices. Competitors include: Mercury, Borland, Serena/Merant, Telelogic <p>Software Config. Mgmt.</p> <ul style="list-style-type: none"> Manage change and complexity with version control, defect tracking and workflow management Competitors include: Mercury, Borland, Serena/Merant, Telelogic 	<p>Application and transaction infrastructure</p> <ul style="list-style-type: none"> Build, deploy and run applications in a proven, secure and flexible environment. Competitors include: BEA, Oracle, SUN, Microsoft.NET, SAP, Borland <p>Application transformation</p> <ul style="list-style-type: none"> Leverage legacy applications and information in new business processes. <p>Business integration</p> <ul style="list-style-type: none"> Improve business responsiveness with end-to-end integration across and beyond the enterprise. Competitors include: Tibco, WebMethods, BEA, See Beyond <p>Commerce</p> <ul style="list-style-type: none"> marketing and sales processes across multiple channels. Competitors include: MS, ATG, Oracle, Broadvision <p>Mobile and speech middleware</p> <ul style="list-style-type: none"> Extend access to business processes, applications and information to anyone anywhere. <p>Product Information Management</p> <ul style="list-style-type: none"> Provide a single, integrated source of product information for use across the value chain. 	<p>Database Servers</p> <ul style="list-style-type: none"> Build the foundation for information on demand to meet the full range of your business needs. Competitors include: Oracle, Sybase, Microsoft, Teradata <p>Database Tools & Utilities</p> <ul style="list-style-type: none"> and DB2 using tools designed to meet your needs. Competitors include: Oracle, Sybase, Microsoft, Teradata <p>Content Management and Discovery</p> <ul style="list-style-type: none"> Manage volume and capture the value of all information contained within multiple content types. Competitors: Mobius, Oracle <p>IBM Data Warehousing and Analysis</p> <ul style="list-style-type: none"> Gather, manage & analyze data, generating information to develop insight for informed decisions. <p>Information integration</p> <ul style="list-style-type: none"> Collect and integrate diverse and distributed information in real time across your enterprise. Competitors include: Informatica, Oracle, Business Objects, BEA. <p>Master Data Management</p> <ul style="list-style-type: none"> Create and maintain consistent, complete, and accurate business data for 	<p>Appl. Development & Portal</p> <ul style="list-style-type: none"> Integrate and extend your Lotus Domino, WebSphere® Portal and IBM Workplace investments. <p>Learning</p> <ul style="list-style-type: none"> Manage training programs and deliver a variety of learning experiences to your users. <p>Messaging</p> <ul style="list-style-type: none"> Access messaging solutions with maximum flexibility for your unique business needs. <p>Real-time and Team Collaboration</p> <ul style="list-style-type: none"> Improve efficiency with instant messaging, presence awareness, Web conferencing and team spaces. <p>E-forms, Document and Web Content Mgmt</p> <ul style="list-style-type: none"> Create, organize, share, and publish the right information for the right people - on demand. <p>Mobile and Enterprise Access</p> <ul style="list-style-type: none"> Extend the reach of your information through remote access with wireless devices. <p>Competitors include: Microsoft, eRoom, WebEx</p>	<p>Security Management</p> <ul style="list-style-type: none"> Ensure compliance to identity and access control policies for IT resources and services. Competitors include: CA, SUN, Novell, Microsoft, HP <p>Server, Network and Device Mgmt</p> <ul style="list-style-type: none"> Optimize availability and performance and automate the provisioning of IT infrastructure resources. Competitors include: HP, BMC, CA <p>Business Application Management</p> <ul style="list-style-type: none"> optimize application performance and service levels. Competitors include: Mercury, Wily (CA) <p>IT Service Management</p> <ul style="list-style-type: none"> Innovation, execution and leadership to manage the business of IT. Competitors include: BMC, HP, CA <p>IT Process Management</p> <ul style="list-style-type: none"> Automate critical IT processes across operational silos. Competitors include: Microsoft, CA, HP <p>Storage Management</p> <ul style="list-style-type: none"> Backup, restore, protect and optimize your storage infrastructure and data. Competitors include: EMC, Symantic <p>Mainframe Management</p> <ul style="list-style-type: none"> Integrating systems management solutions for optimizing and securing mainframe environments.
Windows	Linux	AIX	Solaris	HP-UX
OS/400	OS/390	z/OS		

Dlaczego IBM Software Express?

Pełnowartościowe rozwiązania, klasy Enterprise, które mogą być rozszerzane w kierunku innych technologii IBM Software.



- Niska cena - konkurencyjność,
- Łatwość instalacji i zarządzania,
- Prekonfigurowane środowisko,
- Niskie koszty eksploatacji,
- Ograniczenia licencyjne i skalowalności,
- Systemy operacyjne: Linux i Windows

DB2 Data Management Software

Lotus software

WebSphere software

Tivoli software



IBM Software

Dziękuję bardzo, Pytania?

Jarosław Jackowiak
Software IT Architect
IBM Software Group
Jaroslaw.Jackowiak@pl.ibm.com