



# Portable Synchronization. Sponsored by IT.

## Palm HotSync® Server Allows IT to Manage Infrastructure While Users Become Even More Productive.

If your IT organization is responsible for your company's mobile computing applications, you know that hundreds, even thousands of handhelds are in use across the enterprise, most of them from Palm, Inc. From the CEO to sales and marketing staff, people rely on their handhelds to access up-to-date mission-critical information wherever they are.

With the Palm HotSync® Server, you can provide your handheld users with the simple synchronization and reliable remote access they want, and manage it all at the enterprise level.

In addition, by allowing you to extend virtually any enterprise application to handheld users, the Palm HotSync Server's open architecture provides a platform for large-scale deployment of mission-critical applications – and turns a connected workforce into a formidable competitive advantage.

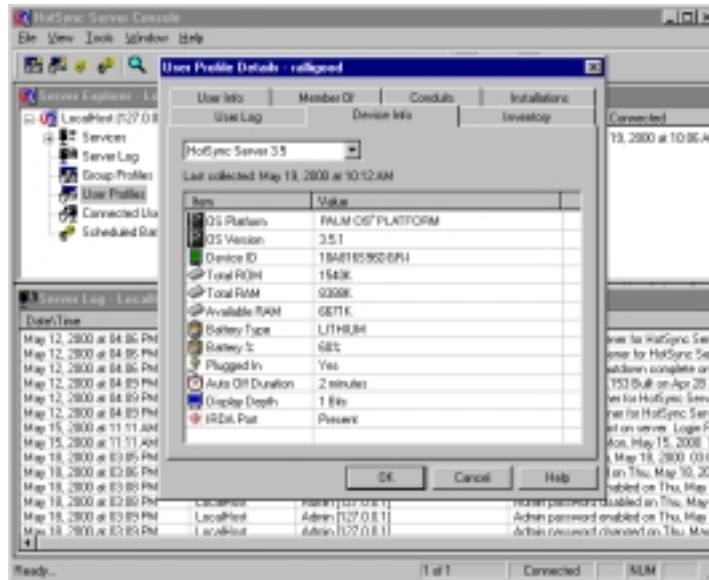
### Visibility, Flexibility, and Control for IT

The Palm HotSync Server, a multi-user, network-accessible version of Palm's HotSync® Manager desktop software, allows multiple concurrent Palm™ users to synchronize with server-resident data. And it allows IT to centrally administer these synchronization services.

By leveraging this comprehensive control of the enterprise-wide handheld environment, IT organizations are well-equipped to deploy mission-critical enterprise applications to handheld user populations. Centralized installation, backups, upgrades, user management, and security features provide a new administrative and management platform for synchronization services and remote access to server-resident data.

### Enhanced Accessibility, Productivity and Dependability for Users

The Palm HotSync Server makes it even easier for handheld users to take mission-critical information with them, capture new information at the source, and exchange data with enterprise systems. With the same familiar HotSync button, they can synchronize their handhelds with data on desktop PCs and network servers, including corporate e-mail, database, and application servers. They can even use these applications without a PC by using the Palm™ Ethernet Cradle in enterprise environments.



## Palm HotSync® Server Enterprise Solutions

### Handhelds Supported:

- Palm OS® 2.x or later (Palm™ III series, Palm™ V series, Palm™ VII handheld), IBM Workpad, Symbol SPT 1500 handheld, Handspring Visor handhelds
- Windows CE support (*forthcoming*)
- Open architecture: Support for other handheld types can be added as needed

### Access Methods:

- Data transport supports both wireless and wireline connections
- Direct-to-server remote access with modem
- Access through standard PC-cradle synchronization at desktop
- Palm™ Ethernet Cradle from any on-site location with a network interface

### Built-in Solutions:

- Concurrent synchronization:
- Console-based management
  - Handheld application and data backup/restore
  - Handheld application install/remove
  - Device status
- User profiles database
- Conduit Development Architecture

### Add-on Conduit Solutions:

- Microsoft Exchange Conduit (e-mail and calendar)
- Lotus Notes Conduit (e-mail and calendar) (*forthcoming*)
- MultiMail® Conduit (IMAP4 e-mail) (*forthcoming*)

### Administrative Functions:

- Create and manage user profiles as well as groups and sub-groups of user profiles
- Define and implement standard builds of device applications
- Log user synchronization session events
- Log device configuration information

### Security:

- Server user name/password authentication
- Password Authentication for Console

# Bringing Enterprise Power to the Handheld Workforce.

## Standard Interface Extends Enterprise Applications to Handhelds

The Palm HotSync® Server is more than a new management tool. It's an open platform with a standard interface for extending a wide range of enterprise applications to handhelds.

Writing to the HotSync Server Conduit API, developers, solution providers, and in-house IT organizations can create new conduits (application-specific synchronization programs executed using HotSync® technology) that move data changes between individual handhelds and corporate servers. Because any enterprise application with a programmable API can be extended to a handheld through a HotSync Server Conduit, the possibilities are as wide-ranging as corporate needs for mission-critical mobile applications.

A Palm HotSync Server Conduit is available for Microsoft Exchange e-mail and calendar functions, providing a groupware solution for handheld users.

## Expanding the Palm OS®

The HotSync Conduit API is a key driver behind the widespread adoption of the Palm OS platform, which has attracted more than 70,000 developers to date.

The HotSync Server Conduit API promises to expand adoption of the Palm OS, because it allows developers to easily extend new and existing enterprise applications to handhelds.

As developers continue to extend the Palm OS through Conduit APIs, the range of applications available for deployment to handhelds will continue to expand.

## Service and Support

As part of the Palm HotSync Server software license, Palm provides customer support and maintenance version software updates for a period of one-year from date of purchase.

Support is available 24 hours a day, 7 days a week, by phone and e-mail. It includes technical assistance for the Palm HotSync Server and any Conduits offered by Palm. Installation, configuration, and software troubleshooting assistance is included with support.

## Get Ahead of the Revolution

Serving as portals into enterprise computing environments, Palm OS handhelds are changing the way people work. They connect people to information and allow them to be more proactive and more productive. Before long, every competitive enterprise will be seeking new ways to use these empowering devices for competitive advantage. With the Palm HotSync Server, you can stay ahead of the revolution with:

- an easy, secure, and cost-effective way to administer and support enterprise-level synchronization;
- an extensible, open platform for large-scale deployment of mission-critical, productivity-enhancing enterprise applications to handhelds; and
- more of what Palm handheld users value most: simple, effective, and dependable access to information – right at their fingertips.

## For More Information

To learn more about how the Palm HotSync Server can help you manage and administer handheld computers in your organization, contact your local representative today or visit [www.palm.com/enterprise](http://www.palm.com/enterprise).



### Conduit Development Kit (CDK)

- Conduit API utilizes Microsoft Component Object Model (COM)
- Conduits can be written in Visual Basic, Java and C++
- Built-in support for Puma Technology's Satellite Forms

### Device Client Software:

- Synchronization with the Palm HotSync Server requires that client software be installed on the accessing handhelds

### Server System Requirements:

- Windows NT Server 4.0 (with Service Pack 4 or later)
- 133 MHz Pentium-based hardware
- 128MB RAM
- 60MB disk space
- Network Interface Card with TCP/IP protocol stack bound

