

# Table of Contents

**Overview of this IFix: 2**

**Prerequisite products and versions: 2**

**Instructions for installing this IFix into WSDD 5.7.1 for use by the Platform Builder: 2**

**Instructions for importing this IFix into a WSDD 5.7.1 SMF Bundle Server 6**

## Overview of this IFix:

The ZIP file contains a set of fixes which allow the OSGi Device Agent in WSDD 5.7.x to communicate with a WEDM 5.0 server.

**osgiagent.jar** - This is the core agent support for processing DMS jobs. This is an update to the existing bundle.

**OSGiAgentExt.jar** – This is used for supplying information about the device such as the device ID, model, manufacturer and resources. This new bundle is a replacement for the SampleAgentExt bundle.

**OSGiAgentExtConfig.jar** - This must be implemented by each customer who wants to change the device class name, This is provided as an example for those customers accepting it's functionality. This is a new bundle.

**osgiagentservlet.jar** - A servlet that can be used to control the OSGi agent via a web browser. The URL is <http://localhost/osgiagentservlet>. This is an update to the existing bundle.

**syncml4j.jar** - this is the SyncML/DM framework used by the agent to communicate with the DM server. This is an update to the existing bundle.

## Prerequisite products and versions:

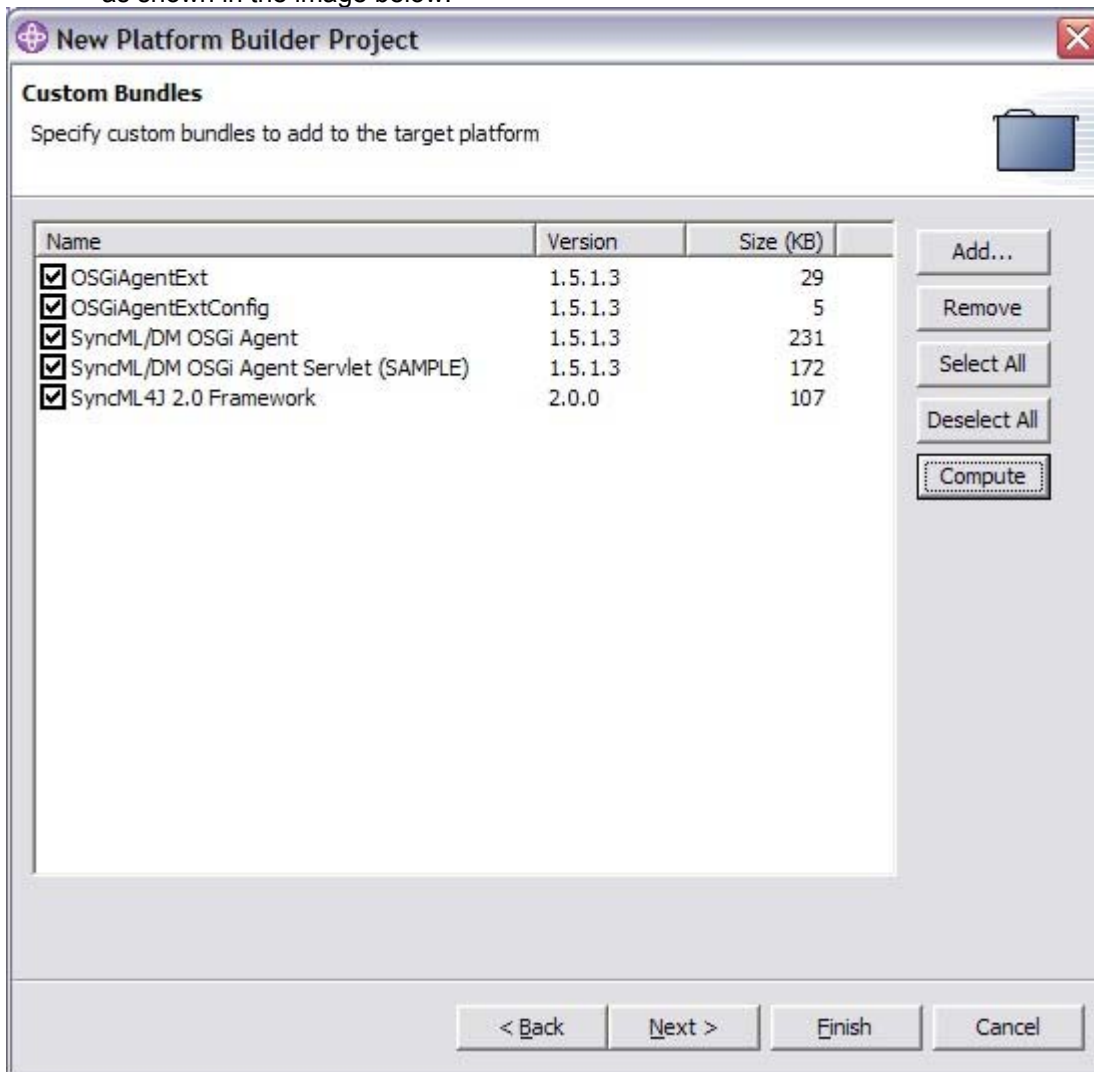
This IFix adds the SimpleOSGi Agent Extension to the WCT client. In order for the client to communicate with the WEDM server, you must have the SimpleOSGi Plugin installed on the WEDM Server. This means you must have WEDM 5.0 with Fixpak 1 and APAR IY65259 or a Fixpak which contains IY65259. APAR IY65259 is available for download at <http://www-1.ibm.com/support/docview.wss?uid=swg24008491>.

## Instructions for installing this IFix into WSDD 5.7.1 for use by the Platform Builder:

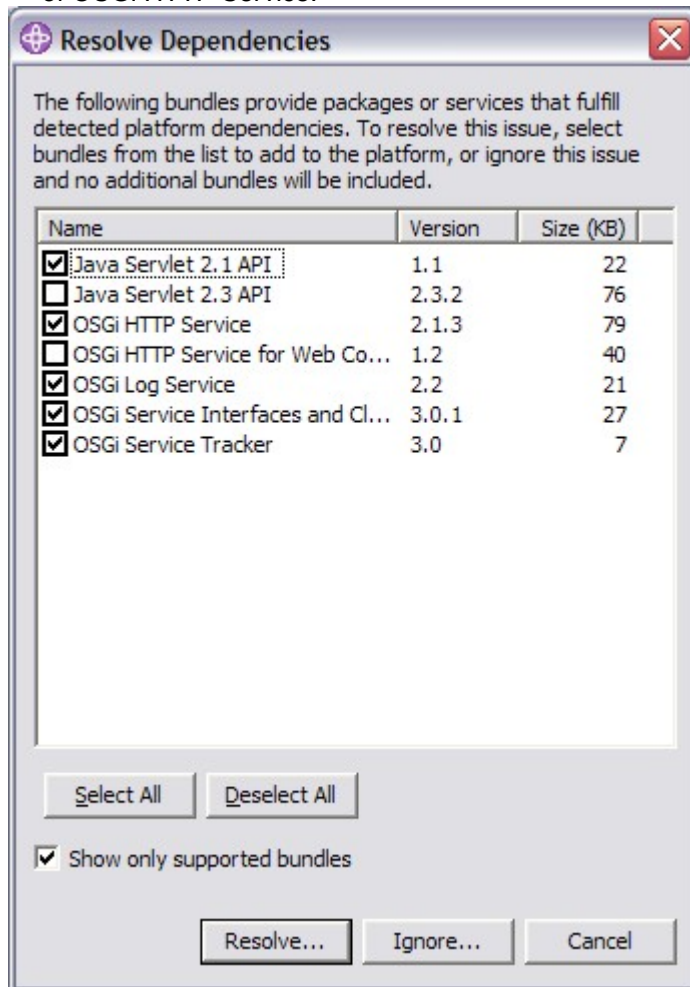
Since some of the file names have changed since WSDD 5.7.1 we cannot simply place these files in the default eswe/bundlefiles directory for Platform Builder. We will have Platform Builder treat them as custom bundles. Here are the instructions for using Platform Builder to produce platforms using this updated OSGi agent.

1. Unzip the zip file into a directory on your WSDD workstation
2. Launch WSDD 5.7.1 and then create a new Platform Builder Project

3. On the custom bundles page select **Add...** and add all of the jars from the zip file. Select the bundles as shown in the image below.

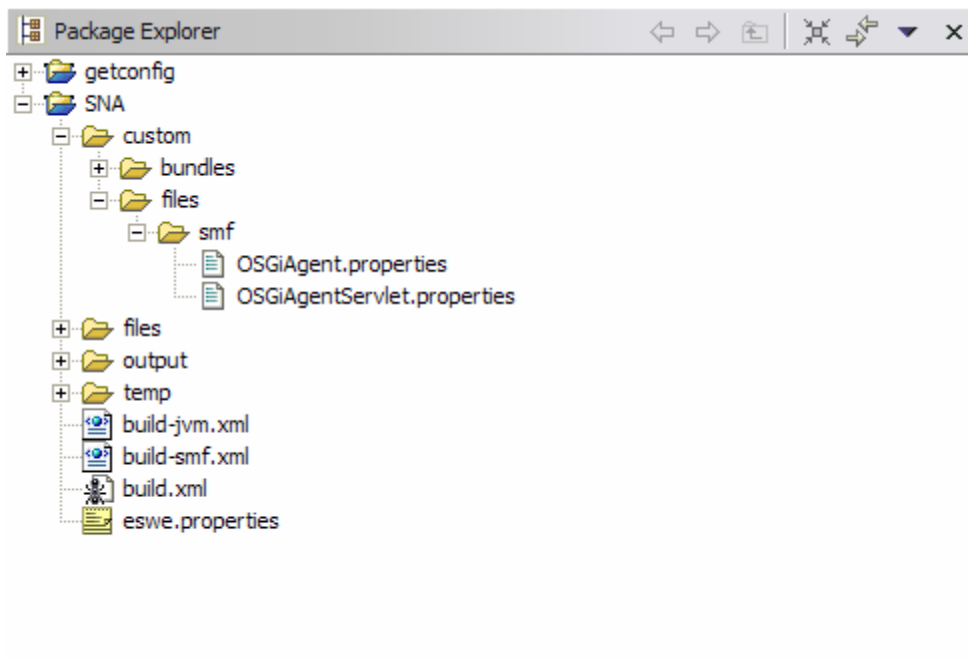


4. Click **Compute** to compute the dependencies, and then select the bundles as shown below. Please be aware that these instructions apply to building a simple platform containing only this new updated agent. If you are adding your own custom bundles to the platform, you may need to resolve dependencies differently. For example, if you have a web application, you would need to select Java Servlet 2.3 API rather than Java Servlet 2.1 API and OSGi HTTP Service for Web Container instead of OSGi HTTP Service.



5. Click **Resolve...** and it should tell you that all dependencies have been resolved.
6. Click **Next** to go to the System Bundles page.
7. Click **Next** again to go to the Summary page - be sure to uncheck the build platform option then click **Finish**.
8. Open the project that you just created in the package explorer panel.
9. Open the **files/smf** folder and select **OSGiAgent.properties** and **OSGiAgentServlet.properties**, right click and select **Copy**.
10. Open the **custom** folder of your project, then select the **files** folder underneath it and right click on it and select **New->Folder**.
11. Call the new folder **smf** and click **Finish**.
12. Now select the new **smf** folder and right click and select **paste** to copy the two OSGiAgent properties files to this new directory.

The project should look as follows when this is completed

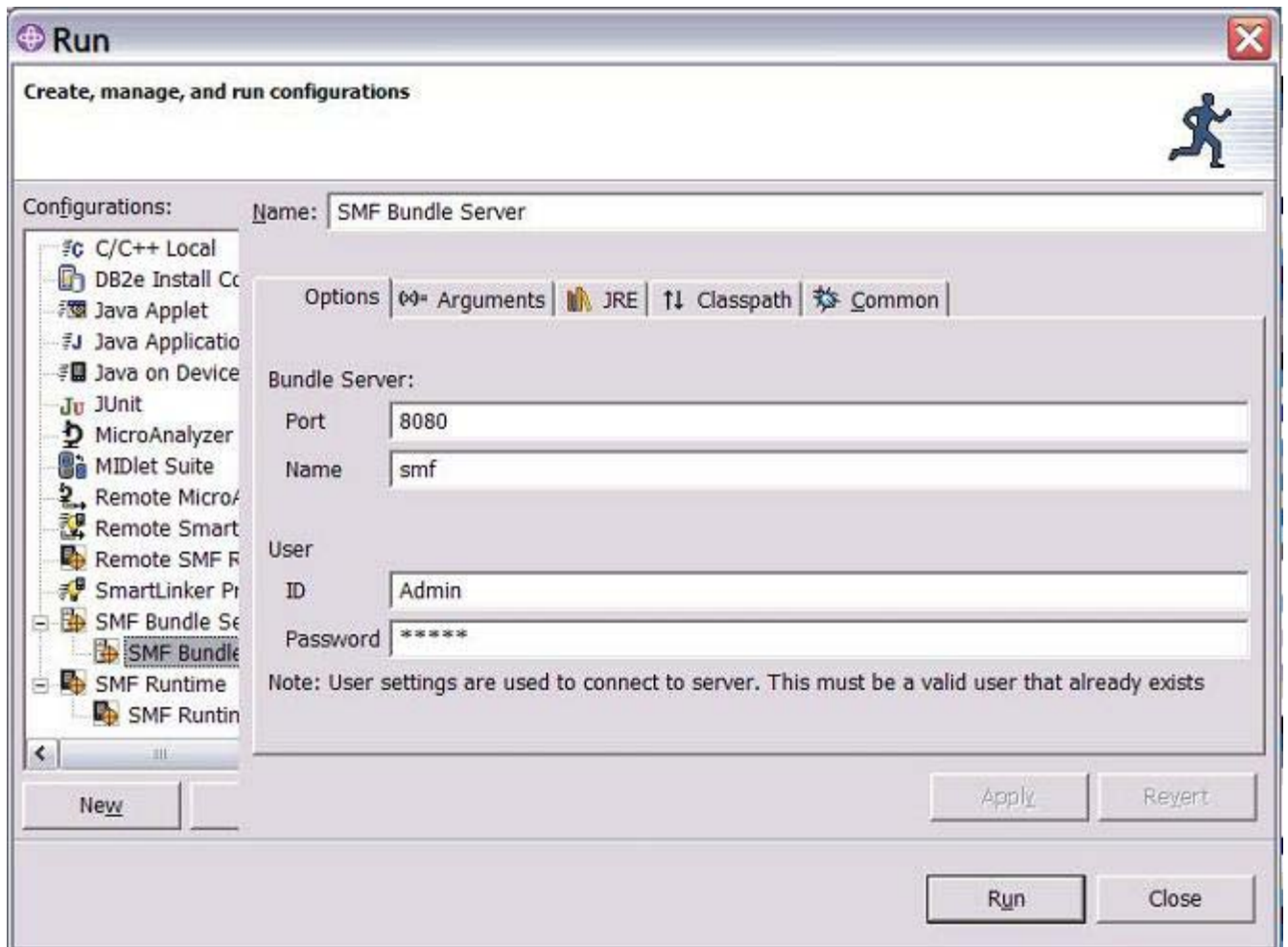


Finally right click on the project and select **Extension Services->Build Platform**  
Once this is completed your platform.zip file will be in the output folder.

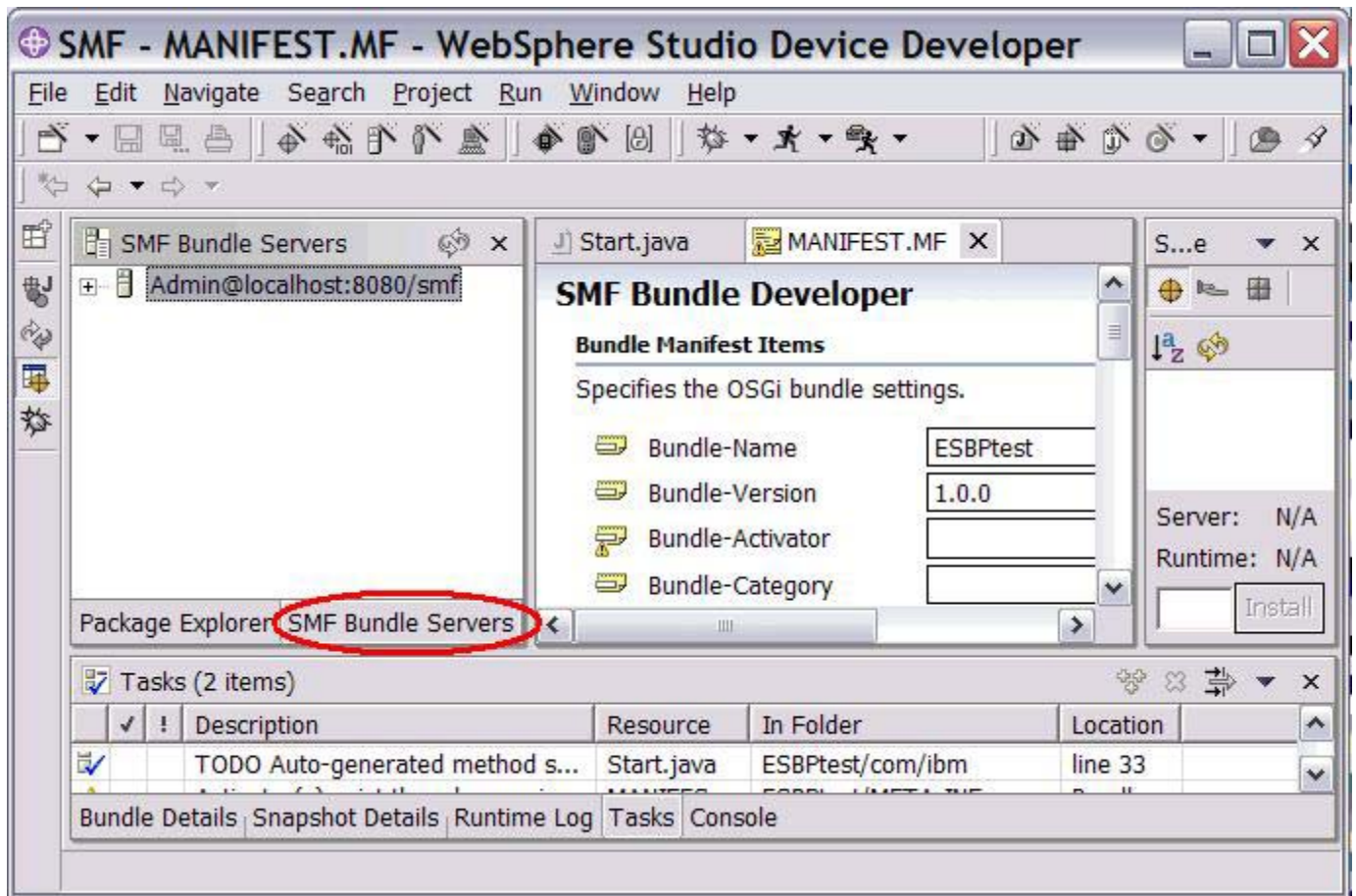
Unzip platform.zip onto your device and begin using it.

## Instructions for importing this IFix into a WSDD 5.7.1 SMF Bundle Server

1. Start a SMF Bundle Server in WSDD/AD.
  - From the SMF perspective, select **Run -> Run ..**
  - Click on the SMF Bundle Server, then click the **New** button
  - Click **Run**

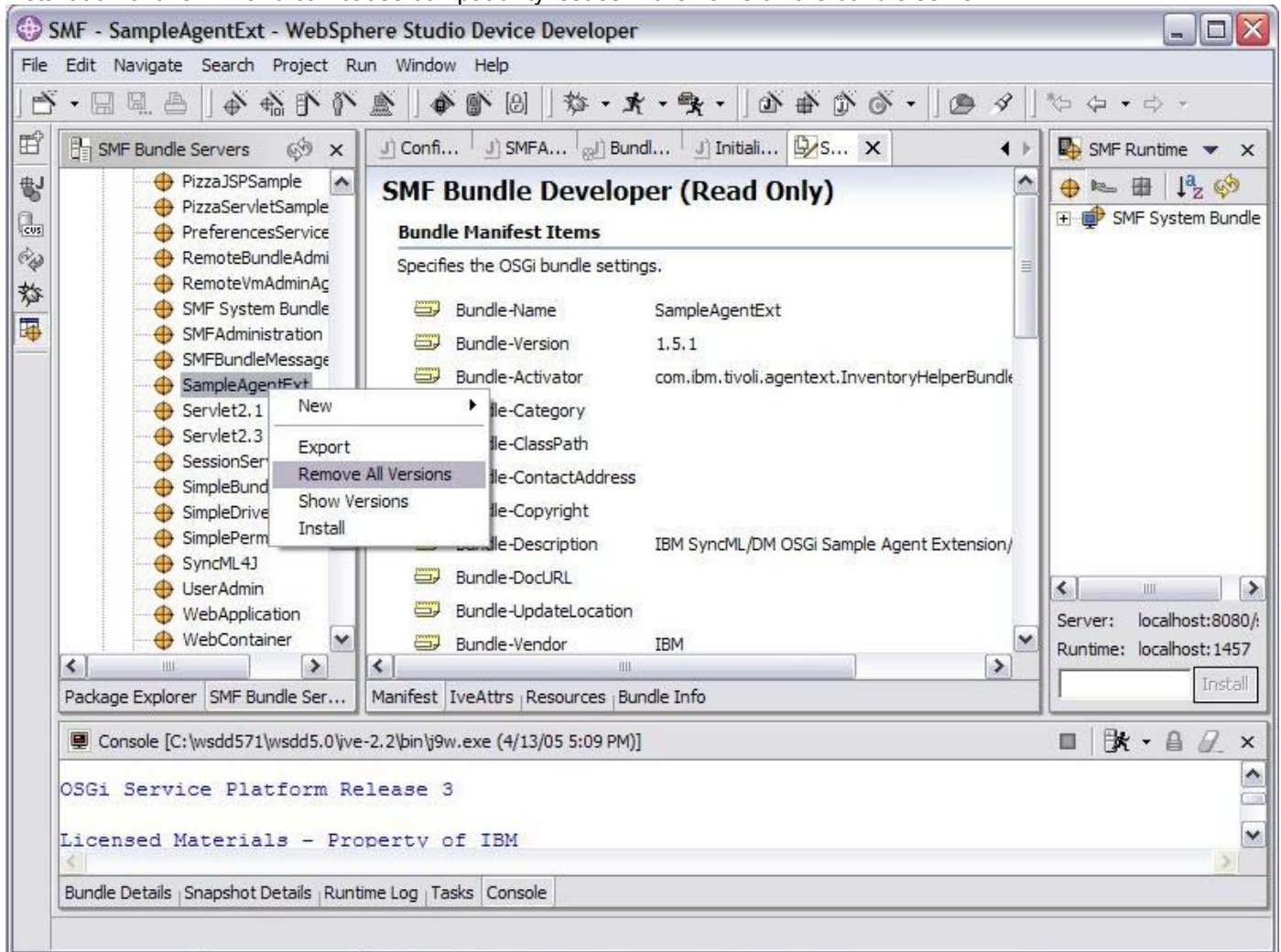


2. In the SMF perspective, open up the Bundle Server view (click the **SMF Bundle Servers** tab):



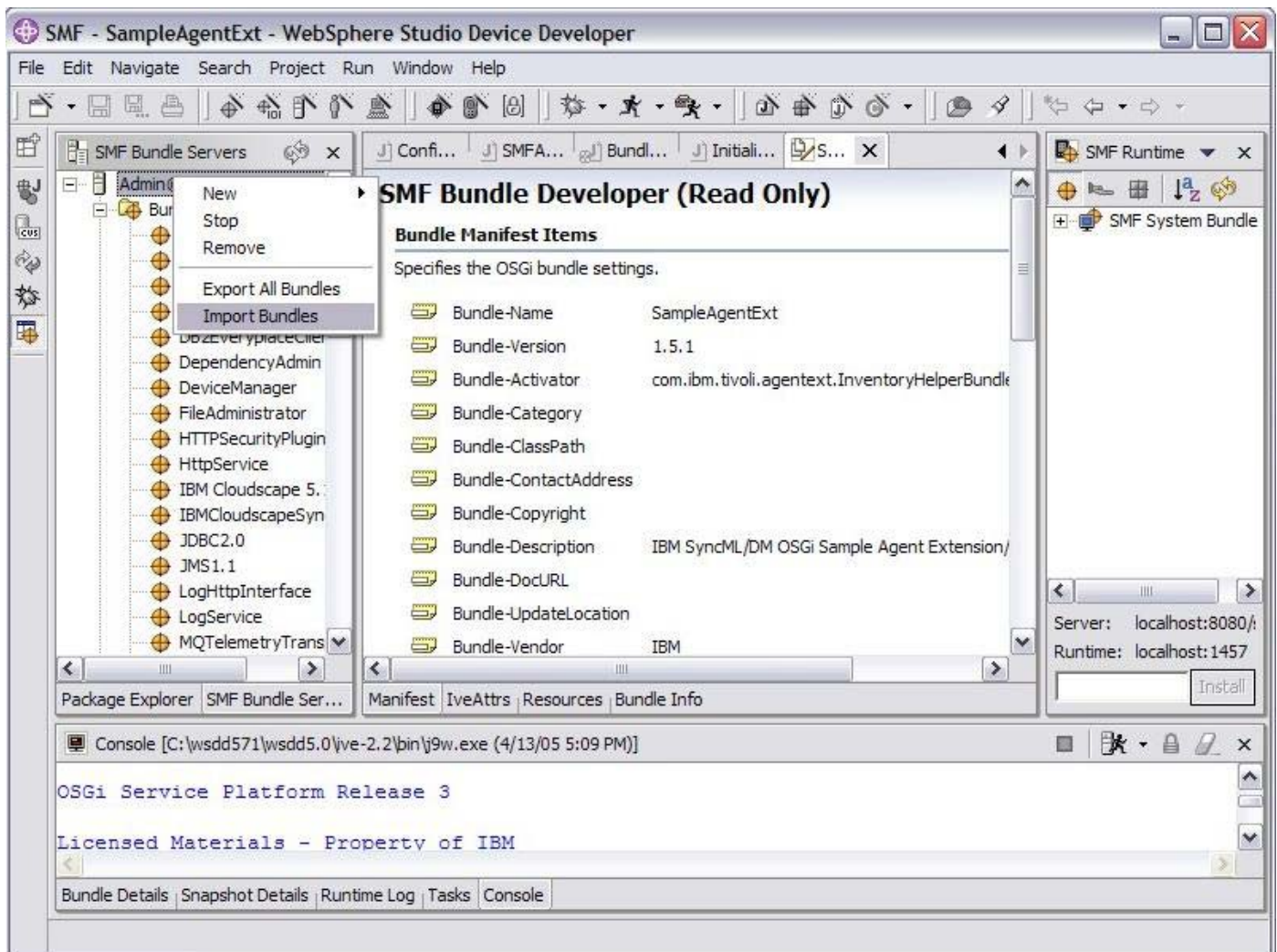


3. Expand the tree for the bundle server and locate the **SampleAgentExt** bundle. Right Click on this bundle and select **Remove All Versions**. Answer **OK** when asked for confirmation. This bundle is no longer necessary with the installation of this IFix and can cause compatibility issues if it remains on the bundle server.

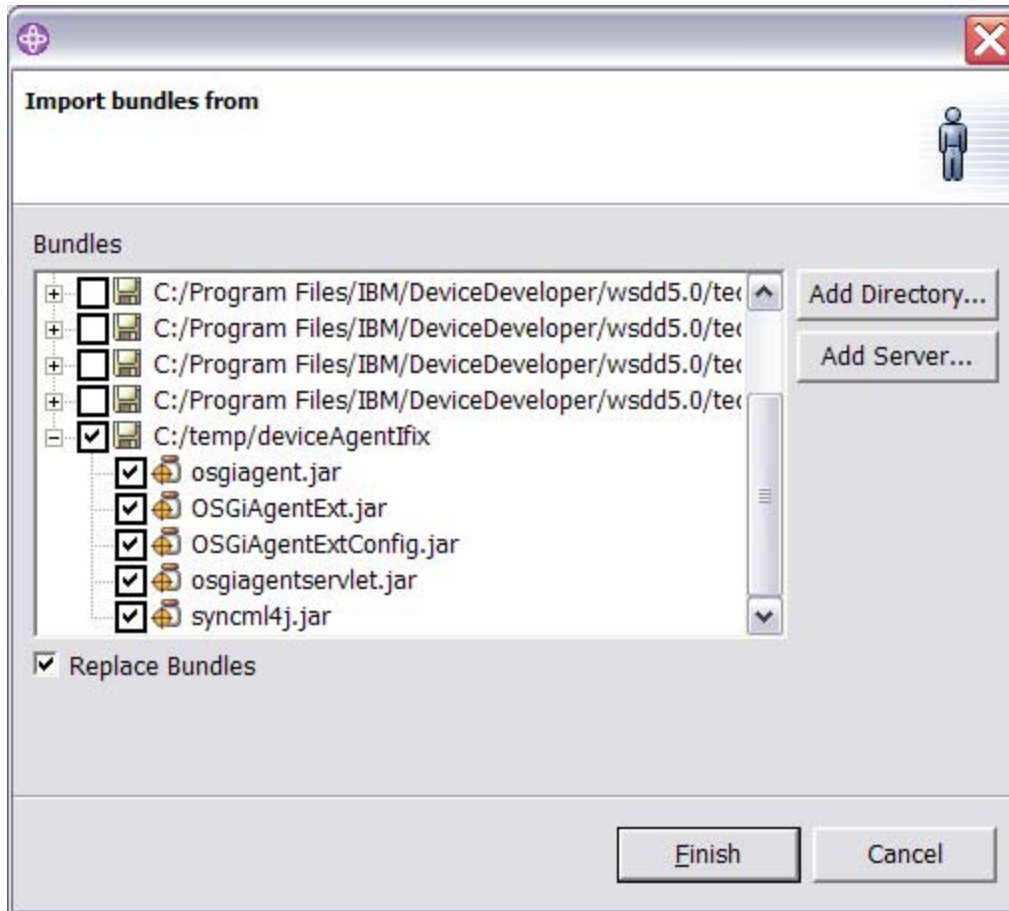




4. Right click on the SMF Bundle Server, and select **Import Bundles**



4. Select the **Add Directory** button. Browse to the folder where you unzipped the IFix.
5. You can expand the folder view to see the bundles that will be imported to the server.
6. Be sure to select **Replace Bundles**. If you do not, the two new jars will be imported into the bundle server, but the three that are being updated will not overwrite the original bundles and you will see an error message warning you of this.



7. Select **Finish**.

Now when a user deploys one of their projects to a runtime, and the project depends on the device agent, the bundle server will automatically provide the updated bundles.