

Getting started with PerfectPhoto

- *Starting and Ending PerfectPhoto*
- *What You Can Do with PerfectPhoto*
- *Explore the Tutorial*
- *Loading Images from a Digital Camera or Scanner*
- *Correcting and Enhancing Images*
- *Sharing Your Digital Image Collection*
- *Getting Help*

Perfect Photo

Welcome to **IBM PerfectPhoto**, a fun and easy digital imaging software program to improve, enhance, and transform images in various ways. Once you have installed PerfectPhoto use this **Getting Started** booklet to begin making the most out of your digital photos and images.

Starting and Ending PerfectPhoto

When installation is complete, the IBM PerfectPhoto menu item is added to **Programs** in the **Start** menu.

► To start PerfectPhoto:

1. Click the **Start** button in the Windows task bar.
2. In the Programs menu, click **IBM PerfectPhoto** then **PerfectPhoto**.

The PerfectPhoto launcher is displayed. ▼

Use **Image Editor** to retouch and enhance your images.
Plus customize images with special effects.

Use **Album Explorer** to load images from a digital camera, create albums, print images, and more.



Use **Gallery Editor** to share your images, send images with e-mail, post on the Web or create slide shows.

Click here to display the online help and find the instructions you need.




Click here to minimize the PerfectPhoto launcher on your desktop.

Click here to exit from PerfectPhoto Launcher.

► To end PerfectPhoto:

1. From the **File** menu of the task you are working in, click **Exit**.
2. If you haven't saved changes, PerfectPhoto asks you to **save** changes.

What You Can Do with PerfectPhoto

▶ If you want to...	▶ then use...
Load images from your digital camera	
Load images from your hard disk or scanner	
Create an album to organize your images	
Print images from your album	
Create a bookshelf theme to organize your albums	
Create stickers, posters, or trading cards	
Create a calendar using your images	<p data-bbox="942 546 1177 581">Album Explorer</p>
Change brightness and contrast of your images	
Correct image tone, sharpness, or red eye	
Change images with blur, focus, emboss and other effects	
Create morphing effects such as vortex, bubble, and wave	
Retouch images using brush, paint, and shadow tools	
Retouch images with color filling, oil painting, and others	
Trim images and add oval, heart, or rectangular border	
Create gallery shows of your images	<p data-bbox="982 850 1177 885">Image Editor</p>
Post your images on a Web page	
Create screen savers	
Distribute a slide show of gallery images	
Create transition effects for slide show	
Play sounds in slide show	
Display title information	
View Help	

Explore the Tutorial

- ▶ If you prefer a tour of IBM PerfectPhoto, the tutorial will provide you with an overview of the program's features and some great hints and tips.
 1. Click the **Start** button in the Windows task bar.
 2. In the Programs menu, click **IBM PerfectPhoto** then **Tutorial**.

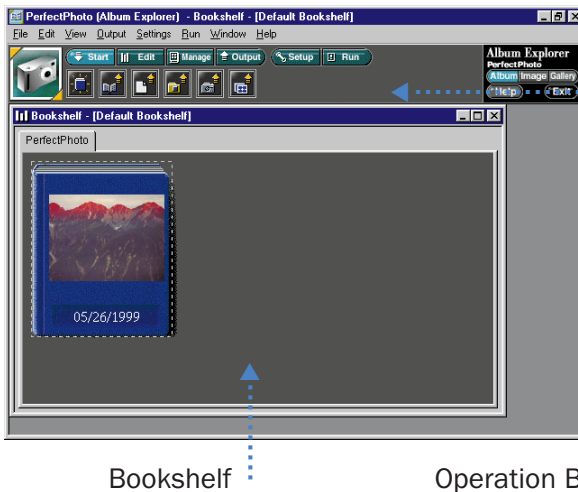
Loading Images from a Digital Camera and Scanner

The **Album Explorer** is used for organizing and managing images. Images are stored into an album and the albums are stored into a bookshelf.

► To load images from a digital camera or scanner:

1. **Connect** your digital camera or scanner to your computer with a cable.
2. **Open** Album Explorer.

A thumbnail view of a bookshelf is displayed. ▼



Note: You must install the appropriate device driver before you connect your digital camera. See the manual that came with your TWAIN device.

[TWAIN is the international protocol for image input devices.]

3. From the Operation bar, click the **TWAIN** icon.
4. In the Select TWAIN Device and Import Image dialog, select an appropriate TWAIN device driver for the device connected to your computer, and click **Open Image**.

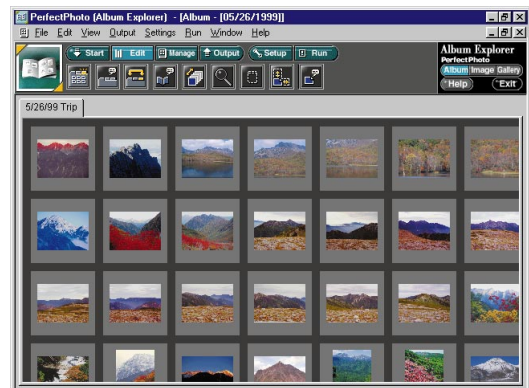
The Create an Album dialog is displayed.

5. Specify the folder and click **OK**.

An album is created automatically, and the TWAIN driver starts.

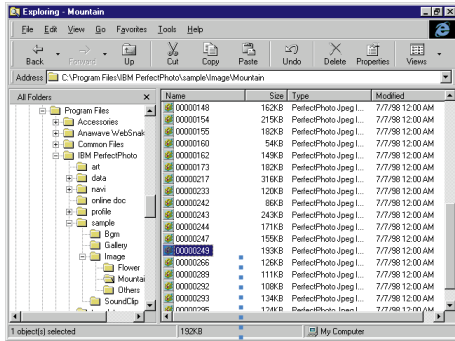
6. See the manual that came with your TWAIN device and load the images.

The thumbnails of the loaded images are displayed in your album window. ►



Correcting and Enhancing Images

Image Editor is a program for editing digital images. You can enhance images imported from a digital camera or scanner and create your own posters or calendars.



▲ Windows Explorer

Image Editor ▼



► You can use Image Editor to:

- Adjust the color or brightness.
- Convert image types
- Add effects. Image Editor provides Retouch Navigation, which makes enhancing images easy. You can also use templates.
- Paste part of an image onto another image using the layer function.
- Produce an enhanced image in a variety of formats, such as a poster, an HTML file for your Web page, or a Slide Show.

For example, you can correct the brightness of an image as follows:



▲ Before Correction



▲ After Correction

Things you can do to correct your images...



Hue: Corrects the brightness and hue of a color.



Brightness/Contrast: Adjusts the brightness and contrast.



Level: Corrects the brightness of an image using a histogram.



Tone Curve: Corrects the brightness of an image.



Red Eyes: Corrects red eyes.



Resolution: Corrects resolution.



Trim: Deletes areas that are outside the selected area.



Paper size: Changes the size of the base to which layers are pasted.



Rotation: Rotates or flips the image.

Things you can do to enhance your images...



Effect Pallet: Enables you to add special effects.



Brush: Allows you to draw lines and shapes with a brush using the mouse.



Paint: Paints the color at the point clicked using the foreground color in the tool pallet.



Gradation: Adds a gradation effect to the selected area.



Shadow: Adds shadows to the selected images or text.



Text: Allows you to enter text at the selected area.



Transformation: Reshapes the selected layer. You can select size, angle, or parallelogram.



Navigation: Enables you to select the enhancement you want to make from the samples.



Tool Pallet: Selects the area and color you want to enhance.



Zoom Pallet: Zooms in an area where you want to do detailed work.



Layer Pallet: Creates layers and changes layer settings.



History Pallet: Saves the history of changes made to an image and applies them to others.

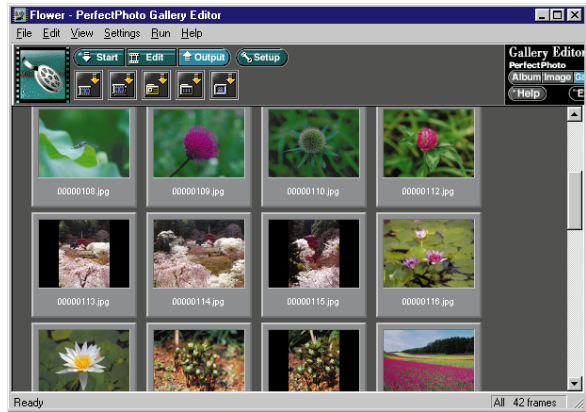
- ▶ **Note:** To display text under the Operation bar icons, click **View** from the Menu bar, click **Operation bar**, and then click **Text**.

Sharing Your Digital Image Collection

Gallery Editor is a program for creating a digital gallery from an image collection. Your images can be presented in six moving views: clouds, earth, tornado, tatami, river, and spiral.

▶ To create a digital gallery:

1. **Open** Windows Explorer or PerfectPhoto Album Explorer.
2. **Open** the folder or album that contains the image you want to use.
3. Drag and drop the image into Gallery Editor. The image is registered in a gallery as a frame.
4. From the Operation bar, select the **Save** icon. The Save As dialog is displayed.
5. Specify the directory and click **Save**.



Gallery Editor ▲

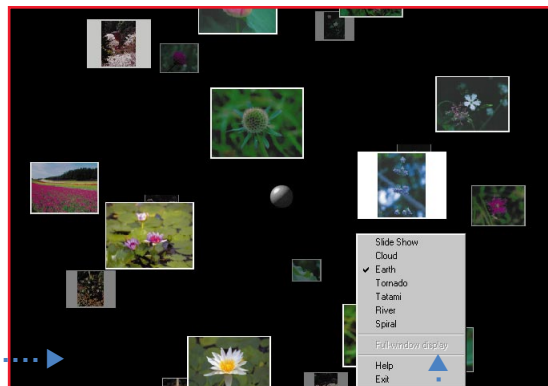
▶ To view your digital gallery:

1. From the Operation bar, click the **Open gallery** icon. The Open dialog is displayed.
2. Specify a digital gallery file (.DPG) and click **Open**. The frames are arranged in thumbnails.
3. From the Operation bar, click the **Start digital gallery** icon.

Your digital gallery is displayed. ▶

▶ To change the way the gallery is displayed:

1. Click the **screen** with the right mouse button. The popup menu is displayed.
2. Click **one of the views**.



Earth View

Popup Menu

Getting Help

Online Help

- ▶ To obtain information online as you work with PerfectPhoto:
 - Click **Help** from the Menu bar or press <**F1**>.
- ▶ To access the online **User's Guide**:
 1. Click **IBM PerfectPhoto** from the **Programs** menu.
 2. Click **User's Guide**.
- ▶ To view **tooltips** of the Operation bar icons:
 1. Move the mouse over the icon whose tooltip you wish to display.
 - A popup tooltip displays a two or three word description of the Operation bar icon.
 - The status bar at the bottom of the window displays a descriptive message.

Support Information

- ▶ Web Support:
 - Visit our Web site at <http://www.jp.ibm.com/esbu/E/perfectphoto> for frequently asked questions and other information regarding PerfectPhoto.

Copyright IBM Corporation 1999.
All rights reserved.

U.S. Government Users Restricted Rights - Use, duplication or disclosure restricted by GSA ADP Schedule Contract with IBM Corp.

IBM and PerfectPhoto are trademarks of IBM Corporation in the United States or other countries or both.

License Agreement: Information pertaining to IBM PerfectPhoto license agreement is provided as a separate document and packaged with the program. To view the agreement, select PerfectPhoto from the Programs menu, then License Information.

Windows is a registered trademark of Microsoft Corporation in the United States and/or other countries.