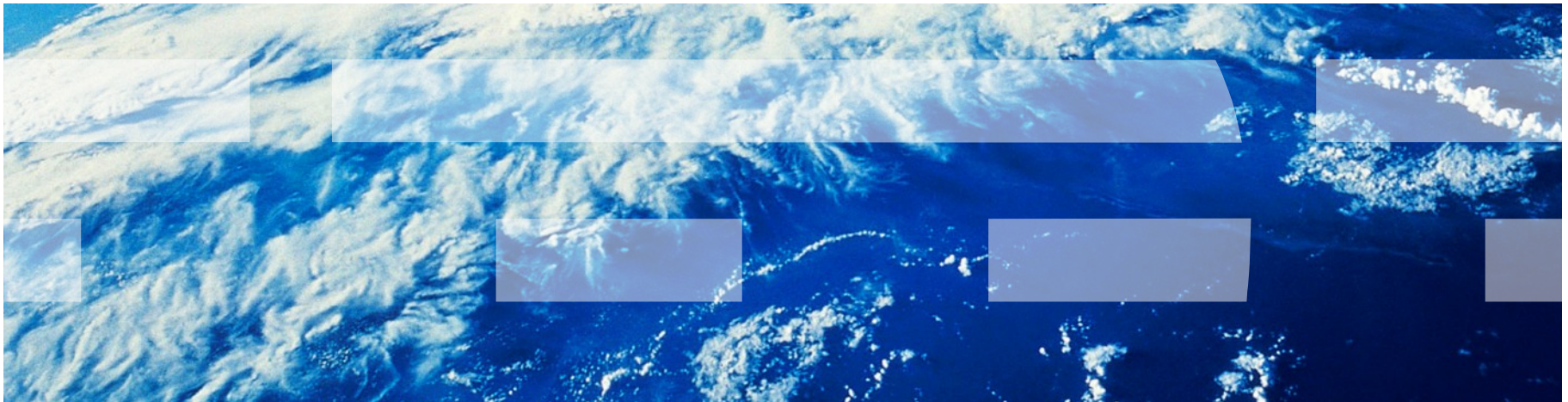




IBM yazılım
zirvesi '09



3D and the Future of Communications: Lotus Sametime 3D



Agenda



- Introduction
- Why virtual worlds for business?
- Overview of IBM Virtual Collaboration for Lotus Sametime (“Sametime 3D”)
 - Platform features
 - Venues available
 - Accessing meetings
 - Meeting room management
 - In-world tools
 - End user and administrator interfaces
- Use cases
- Demo and tour (in world) (or video)
- Architectural overview
-

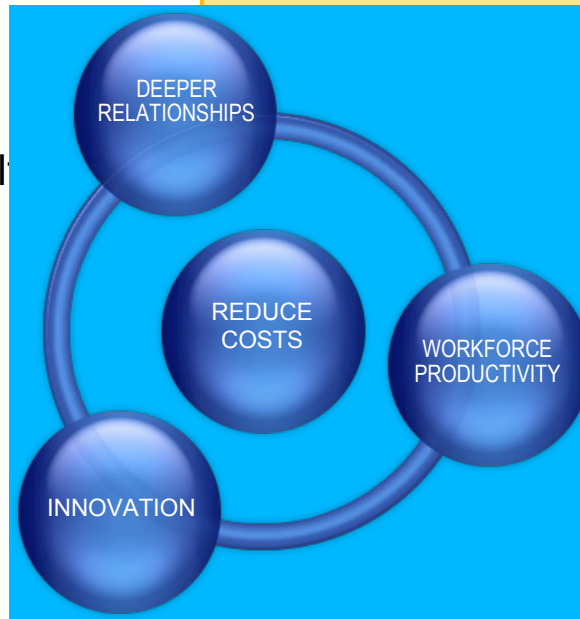
The Lotus Mission: Smarter Collaboration

- **Reduce costs**
to improve the effectiveness of your people while optimizing your costs
- Build **deeper relationships**
to work more closely with your clients and partners to protect your revenue streams
- Increase **workforce productivity**
to improve the agility of your business and quality your results
- Spur **innovation**
to position your company to grow while surviving the downturn

The Lotus Mission:



Empowering people to be **more effective**, **responsive** and **innovative** in the context of the work they do



The Lotus Business Platform



Knowledge Worker




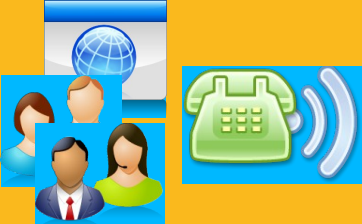
Informational Worker (Boundary)

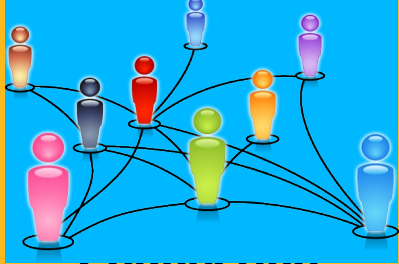


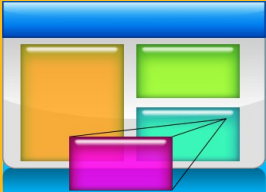
External Partners

   **Universal Access**  

 **Messaging**

 **Communicating**

 **Connecting**

 **Integrating**

Lotus

Open Standards Architecture

Business Applications 

Information Management 



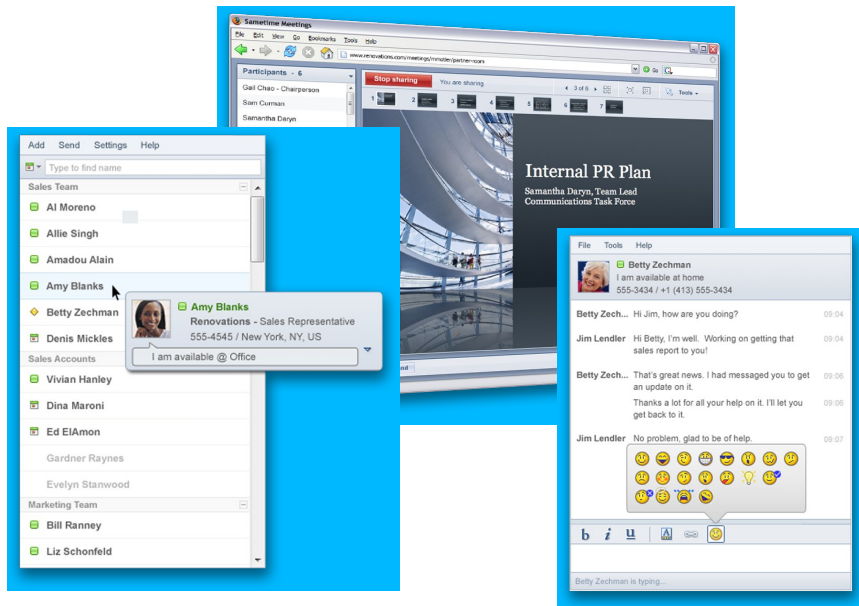
Simply communicating more efficient

Real-Time Collaboration

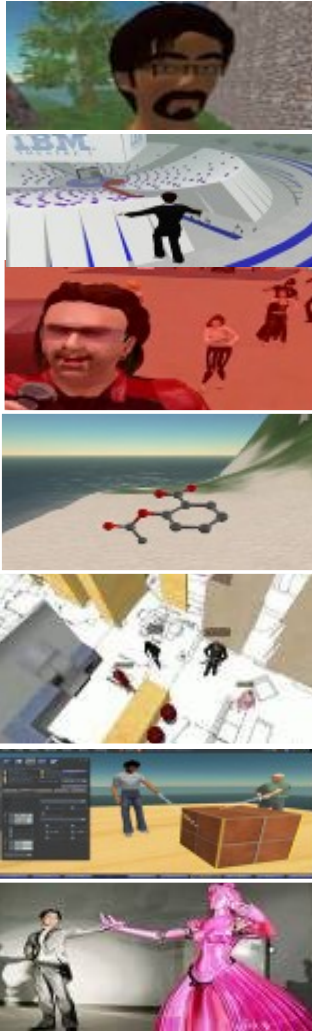
- Latest Rich & Web Client experience
- Advanced Web Conferencing (Desktop & Web clients): As easy to join as a chat
- Excellent video quality and interoperability
- AJAX / Web capabilities with toolkit for app-integration, e.g. any Portal

Unified Telephony

- Call a person – not a number - from the context of your work
- Intelligent Call Management
- Rich and consistent end user experience across multiple PBX systems from all major vendors
- Rich online Presence
- Softphone



Immersive experiences bring to users



The Sense of Self

The Death of Distance

The Power of Presence

The Sense of Space

The Capability to Co-create

The Pervasiveness of Practice

The Enrichment of Experience

How do virtual worlds work -- in 20 seconds or less?

Avatar - an avatar is a representative of you in a virtual world.



Avatars can **meet and interact** with other avatars in a 3D environment



Business value of virtual world platforms



Greater leverage of key experts across an organization



Faster response to organization and client issues

Increased Efficiency

Improved Access

Enhanced Learning and Collaboration

Decreased Cost



Realtime collaboration on tasks



• Enables connection of globally dispersed teams

Sametime 3D- A new way to collaborate

- **Business Value:**

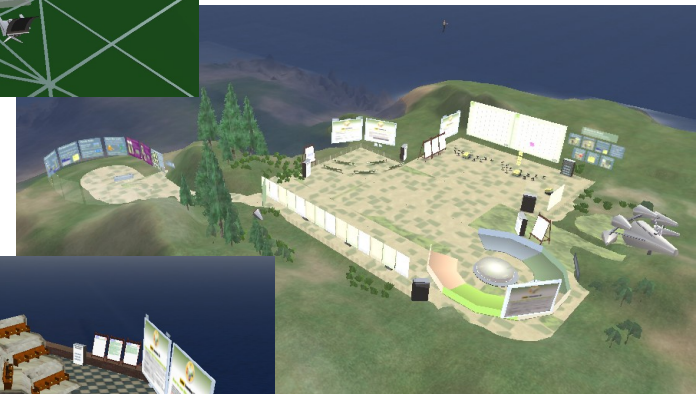
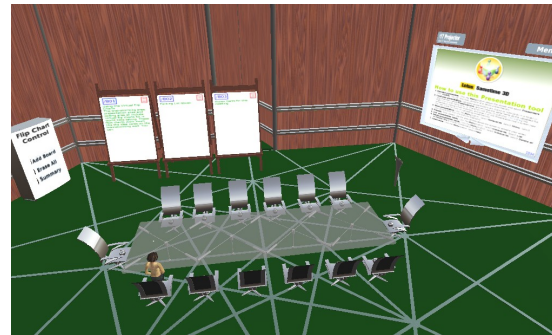
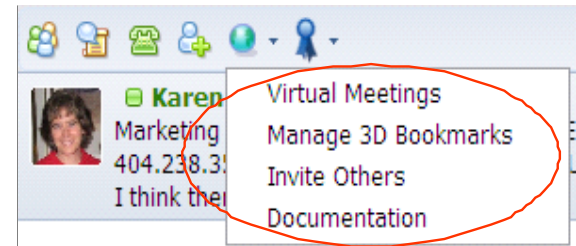
- Supports enhanced collaboration activities using virtual worlds, integrated with Lotus Sametime 8.01(or later)

- **Business Venues:**

- Boardroom
- Collaboration space
- Theater

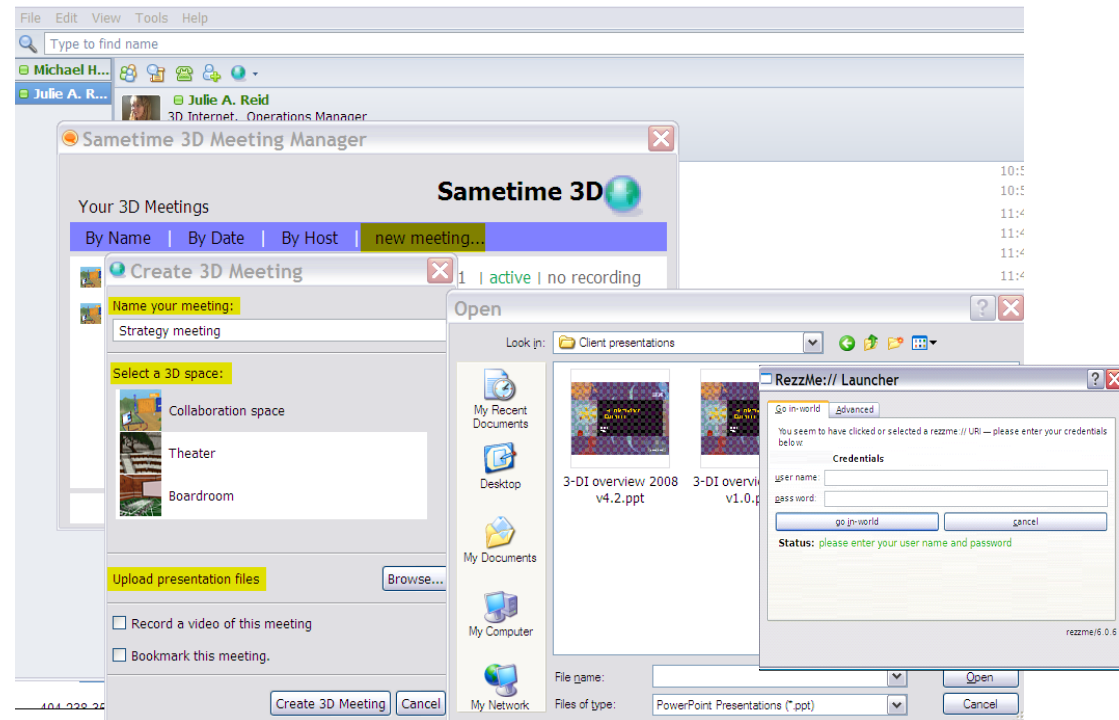
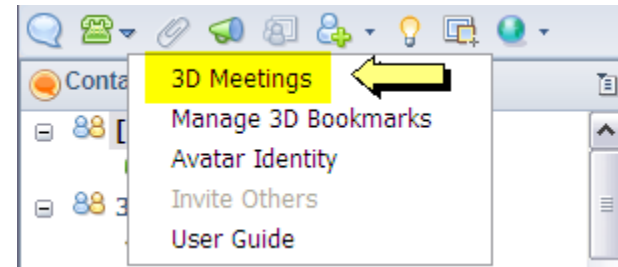
- **Platform features:**

- Reusable meeting spaces
- In-world tools to support virtual meeting activities
- Optional spatial voice
- Access control, integration with Domino User directory or Enterprise LDAP
- Web Portal with User and Administrator roles



Meetings are created and accessed using the SameTime plug-in...

- Select participants via group chat and select 3D meetings
- Choose existing meeting or from meeting space templates (Boardroom, Collaboration area, Theater)
- Send invitation
- User authentication (against LDAP) to confirm identity prior to entering virtual meeting



<http://www.youtube.com/watch?v=SfqGwKFStuw>

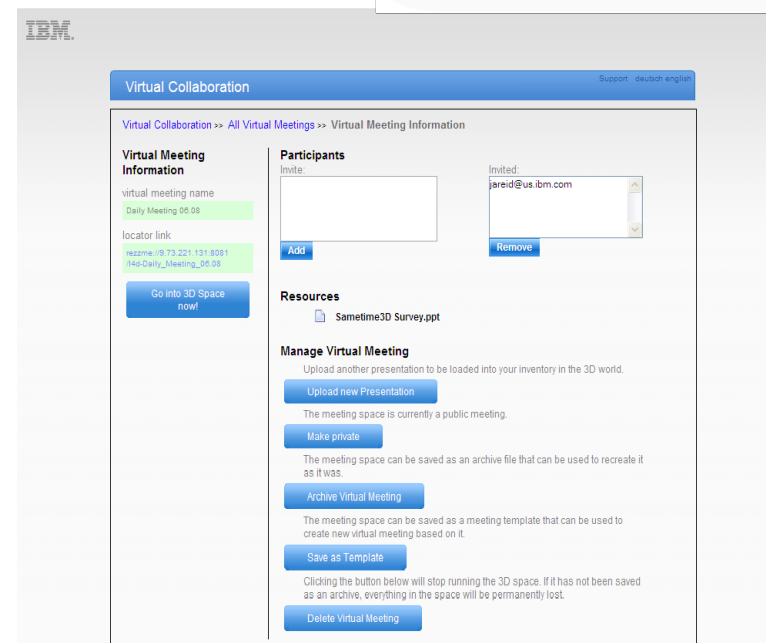
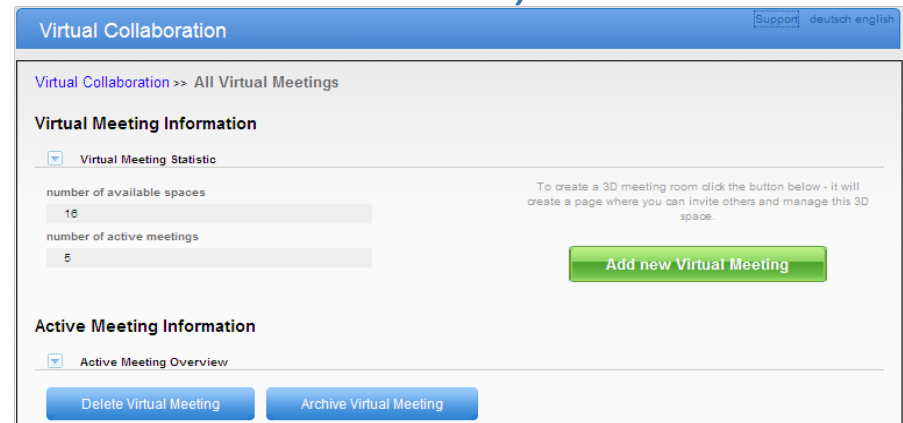
... or using the web user interface

- Sign on to Virtual meeting web site
- Choose existing meeting or create new meeting from space templates (Boardroom, Collaboration area, Theater)
- Click on meeting to enter or click Edit to invite others, upload files, make private, save as template, archive or delete
- User authentication (against LDAP) to confirm identity prior to entering virtual meeting

<http://www.youtube.com/watch?v=SfqGwKFStuw>

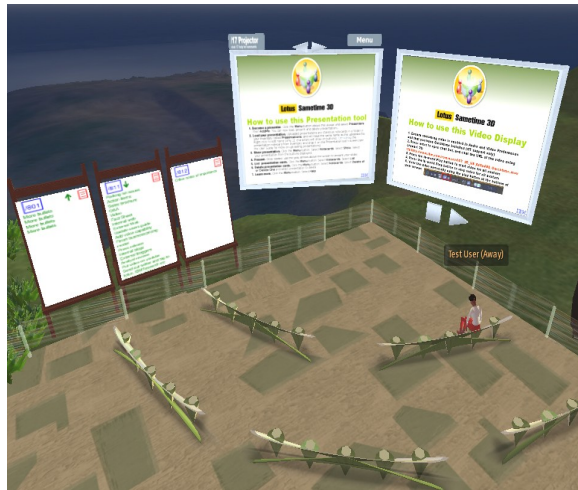
Meeting room management (web user interface)

- Add/remove rooms
- Make rooms public/private and invite selected participants to private meetings
- Archive space (with contents) and restart later
- Add new templates, or save existing rooms (with contents) as templates for future enterprise use
- Upload presentations
- Manage multiple servers (administrator only)



In world components (flip chart, presentation and video viewer available in all three venues)

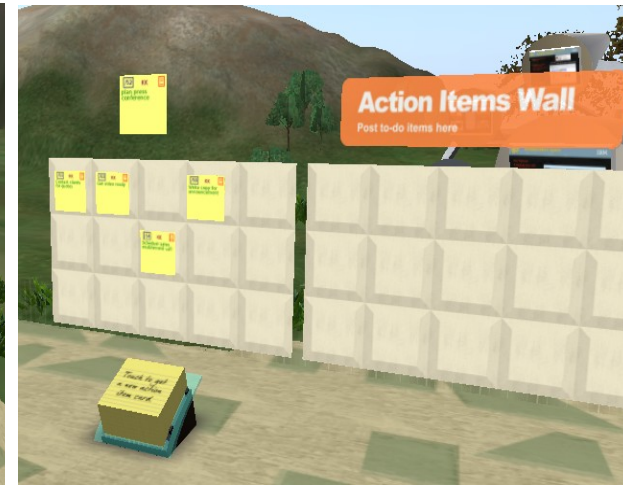
Presentation/video/flip charts



Brainstorming area



Action items



Planning wall



Interactive polling

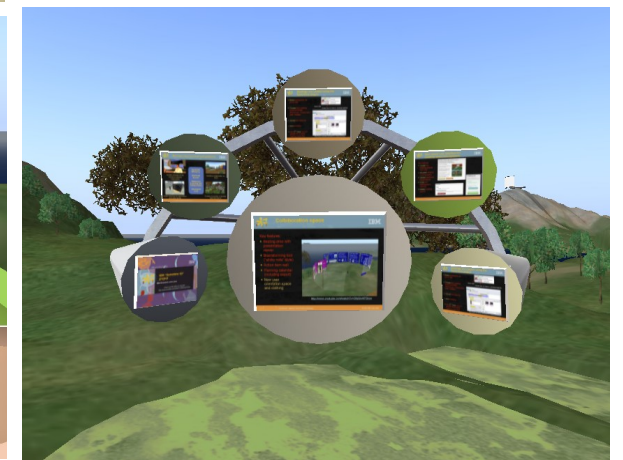


Image viewer

Use cases

- **HR:** Remote employee meetings, mentoring sessions, training and education
- **Strategy orgs:** strategic planning activities, process re-engineering discussions
- **Development teams:** requirements prioritization discussion, project/development reviews
- **Sales & Marketing:** Project Room/“War room” for client projects, proposal development, announcement planning
- **Support:** “Crit sit” issue resolution communications space
- **Project office function:** Project managers who need to manage plan/projects for disperse teams
- **IT departments:** Support internal clients needs for collaboration, strategic planning, project office needs that can be supported with Sametime 3D, as well as for internal development
- **Consulting firms:** visioning/strategy workshops, facilitated sessions for clients, internal planning meetings
- ***Any group that requires simultaneous creation, review and manipulation of content can benefit from this capability***

Team-based activities

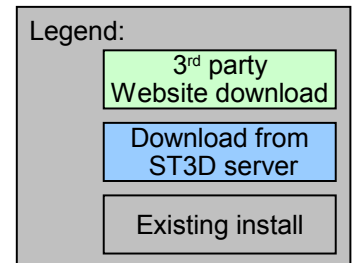
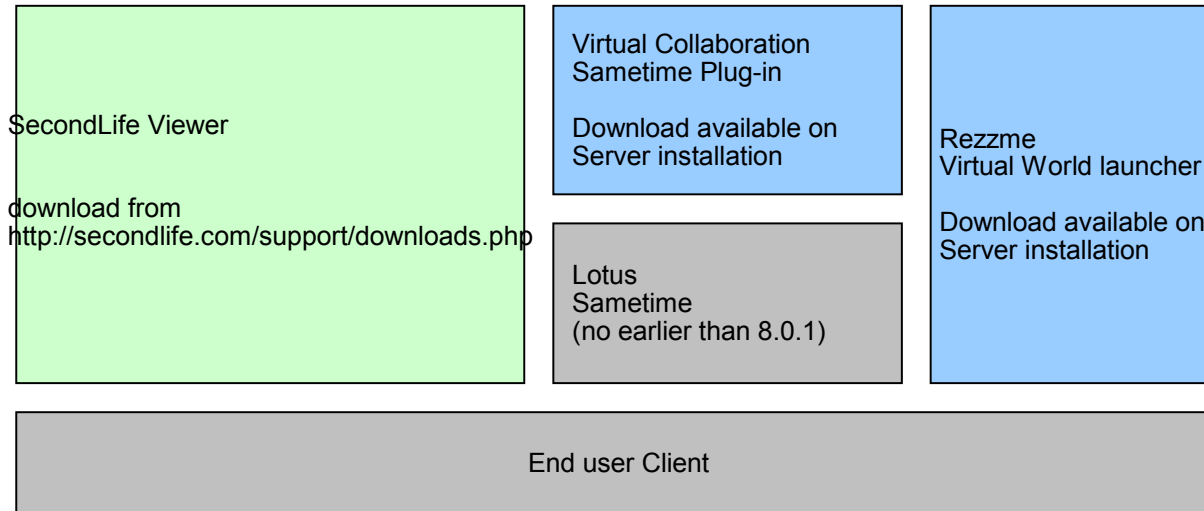
- **Task planning exercise (task description, owner, level of effort, time frame)**
- **Focused improvement sessions (as is, to be, time frame, closing the gap)**
- **Scaled evaluation (vote on characteristics/statements/requirements – from strongly agree to strongly disagree)**
- **Pros and cons analysis (evaluation of alternatives)**
- **Idea generation and prioritization (generate and vote on ideas, requirements etc)**
- **Focus groups (input/feedback and rate)**
- **Key initiatives analysis (what initiatives are needed, categorize and prioritize, goals, strategies, measurements and targets)**
- **SWOT analysis (strengths, weaknesses, opportunities and threats including analysis via voting)**
- **Poster sessions (use presentation screens to present and flip charts to capture comments)**
- **Training (class design, as well as present, discuss, test recall/retention)**

Take the video tour...

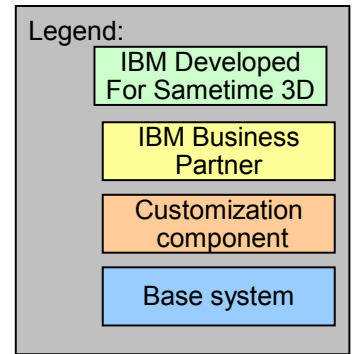
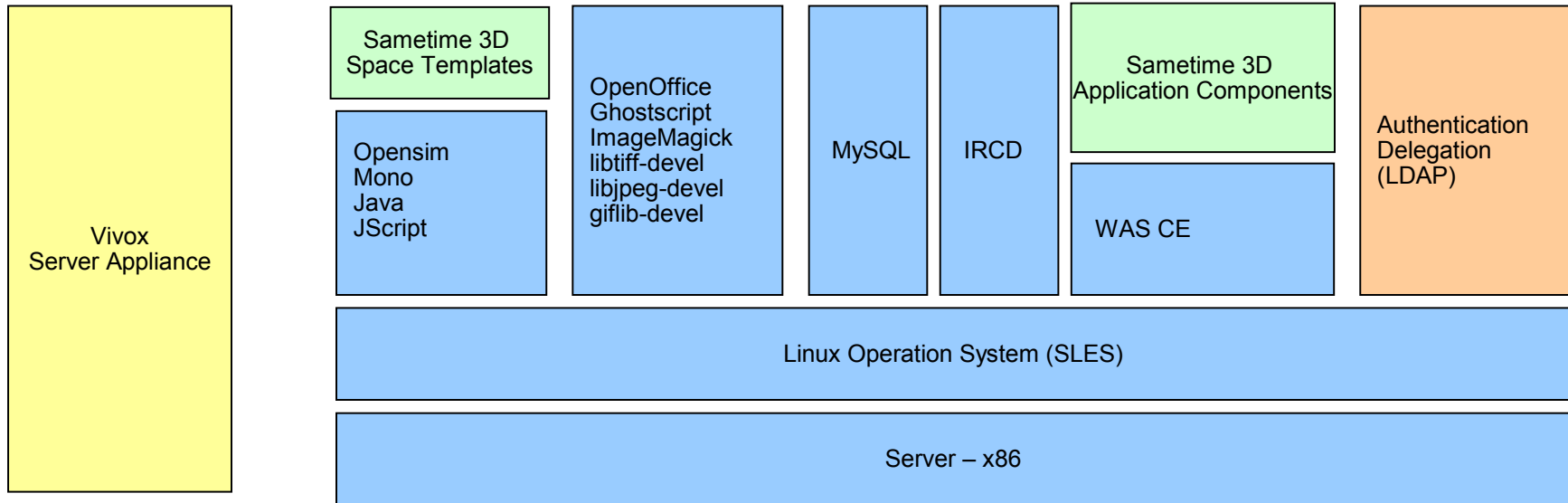
Virtual Collaboration for Lotus Sametime video tour (youtube)



Virtual Collaboration for Lotus Sametime Understanding the Client Component Installation



Virtual Collaboration for Lotus Sametime Understanding the Server Component Deployment




“Pilot offering” solution package


One pack of rooms	<ul style="list-style-type: none"> •One pack allows client to have up to four rooms running concurrently
Install Planning	<ul style="list-style-type: none"> •Meet with the customer over the phone for installation planning - including software and hardware requirements and required skill sets from customer
Install and configuration of ST	<ul style="list-style-type: none"> •Install and configure Virtual Collaboration for Lotus Sametime (4 rooms total)
3D Project Management	<ul style="list-style-type: none"> •LDAP integration (Domino LDAP) •Management of all ST 3D deliverables
Orientation Sessions	<ul style="list-style-type: none"> •Train the Trainer user orientation and collaboration session
Post Install Support	<ul style="list-style-type: none"> •8 hours of phone support for 30 days post install.

Client responsible for pre-requisite software installation. Hardware cost and voice option not included. Recommended hardware configuration will be provided. Other options (voice, larger configurations, other LDAP etc) available on request



Activities	<u>Profile</u>	Bookmarks	Communities	⌵
Files	Wikis	Blogs		



Ron (RON) Sebastian 


Executive I/T Architect, Technical Assistant to Robert Picciano, GM, Lotus Software

BURLINGTON, ON Canada

Building: 50 | Floor: 01 | Office: N/A

1-303-262-0154

rons@ca.ibm.com

 Send e-mail | More Actions ▾

... THANK YOU

Bu sunum 15 Ekim 2009 tarihinde Ankara Sheraton Hotel'de yapılan Yazılım Zirvesi 2009 için hazırlanmıştır.

<http://www.ibm.com/software/tr>

© Copyright IBM Corporation 2009. All Rights Reserved. IBM, the IBM logo, and ibm.com are trademarks or registered trademarks of International Business Machines Corporation in the United States, other countries, or both. If these and other IBM trademarked terms are marked on their first occurrence in this information with a trademark symbol (® or ™), these symbols indicate U.S. registered or common law trademarks owned by IBM at the time this information was published. Such trademarks may also be registered or common law trademarks in other countries. A current list of IBM trademarks is available on the Web at "Copyright and trademark information at www.ibm.com/legal/copytrade.shtml. Other company, product, or service names may be trademarks or service marks of others.