



IBM Technical Summit 2013

Developing in the Cloud, for the Cloud

Amy H Anderson
Manager, Cloud Partner Programs, IBM Ecosystem Development
aha@us.ibm.com

IBM Technical **Summit**





IBM's Growth Plays

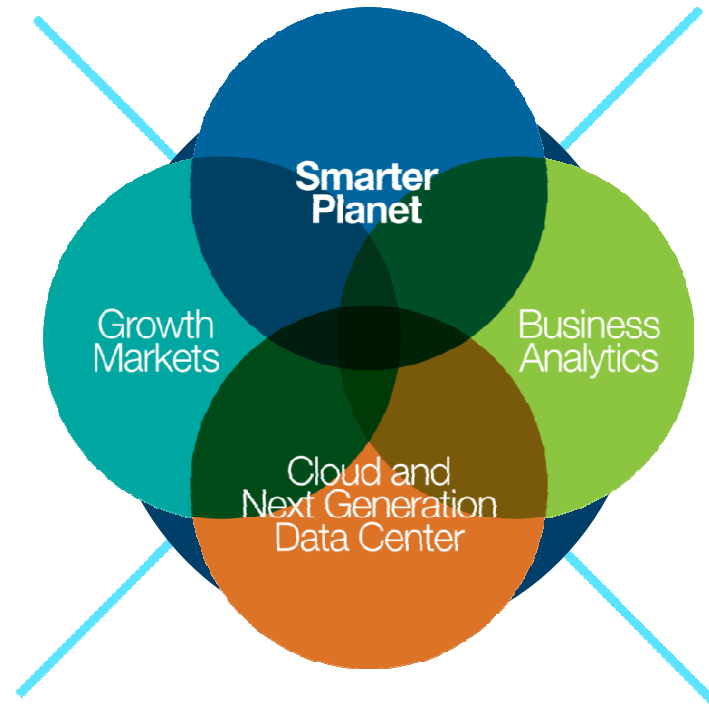
Smarter Planet

Contributes ~\$7B of growth over Roadmap

Growth Markets

Approaches 30% of IBM's geographic revenue by 2015

Business Analytics



Cloud

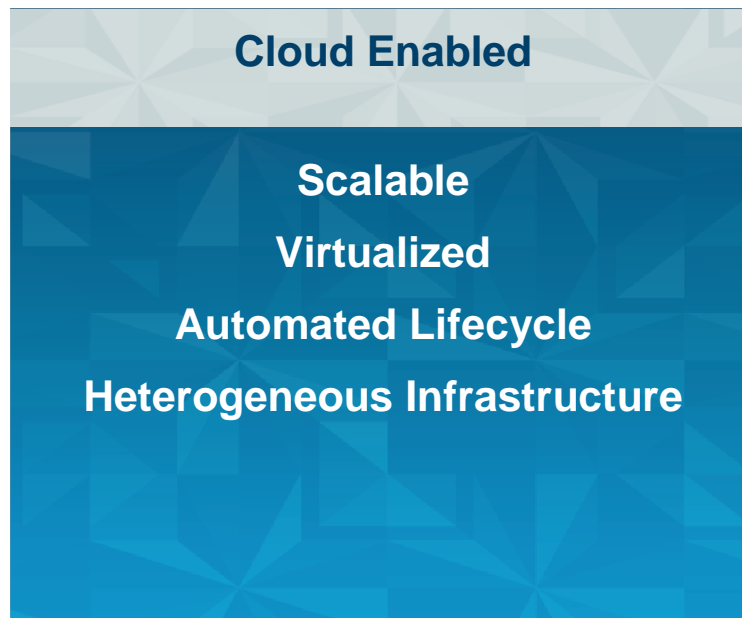
Contributes ~\$7B of revenue, of which ~\$3B is incremental growth

[Visit our interactive infographic on these tech trends](#)

IBM Technical **Summit**

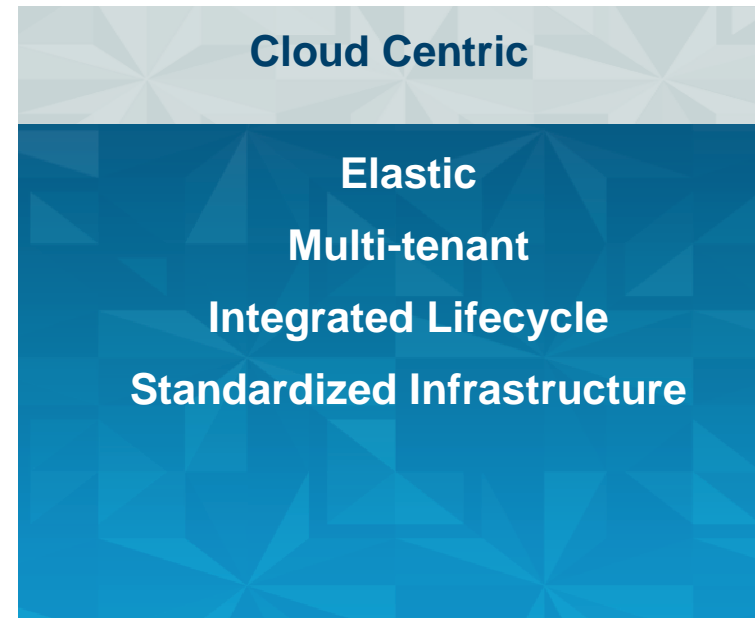


Two major application deployment models have emerged in cloud adoption



**Existing
Middleware
Workloads**

Compatibility with existing systems

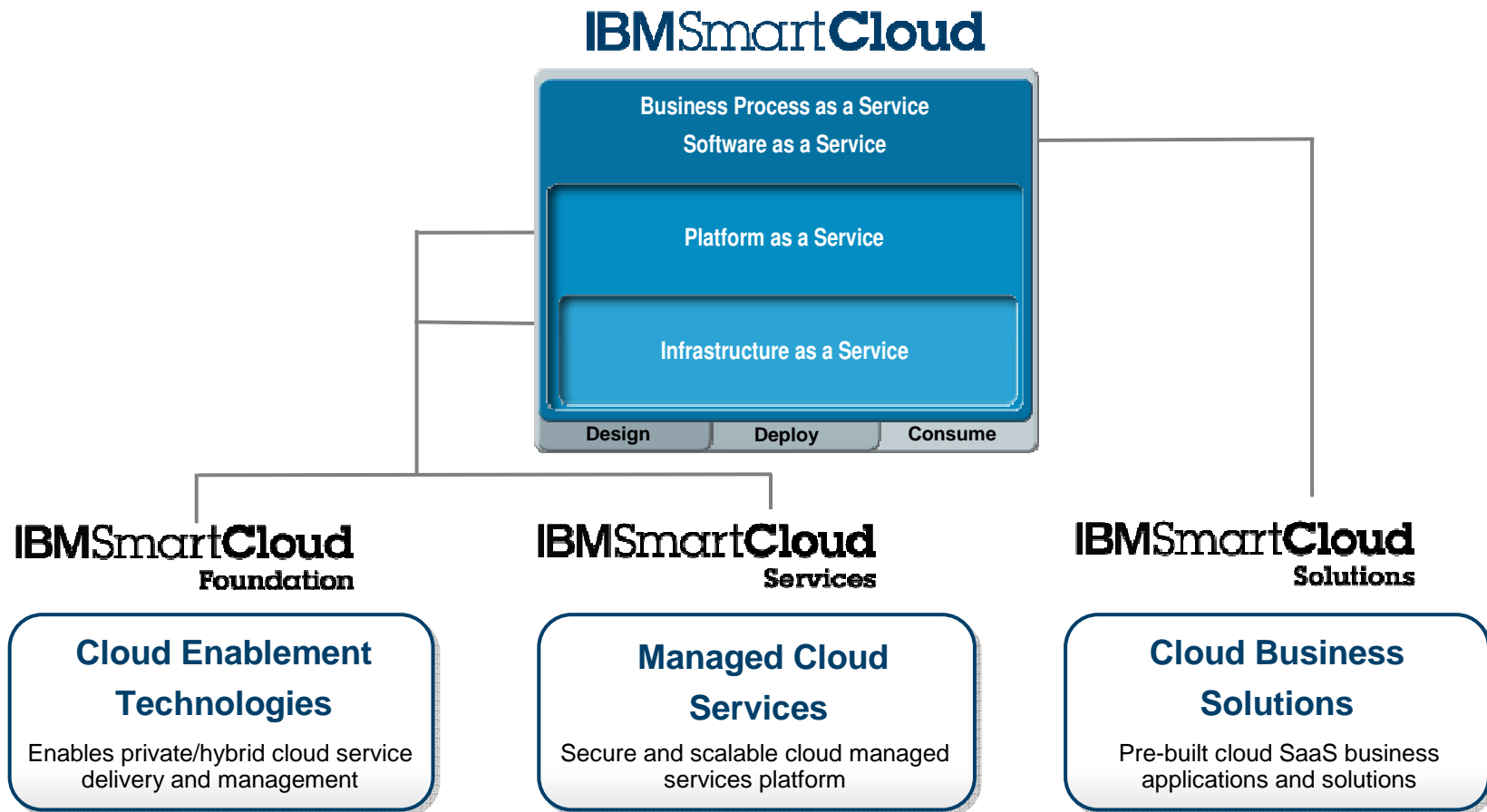


**Emerging
Platform
Workloads**

Exploitation of new environments



SmartCloud capabilities are built on common platform, with a commitment to open standards.



Common Open Standards Technology and Industry Ecosystem



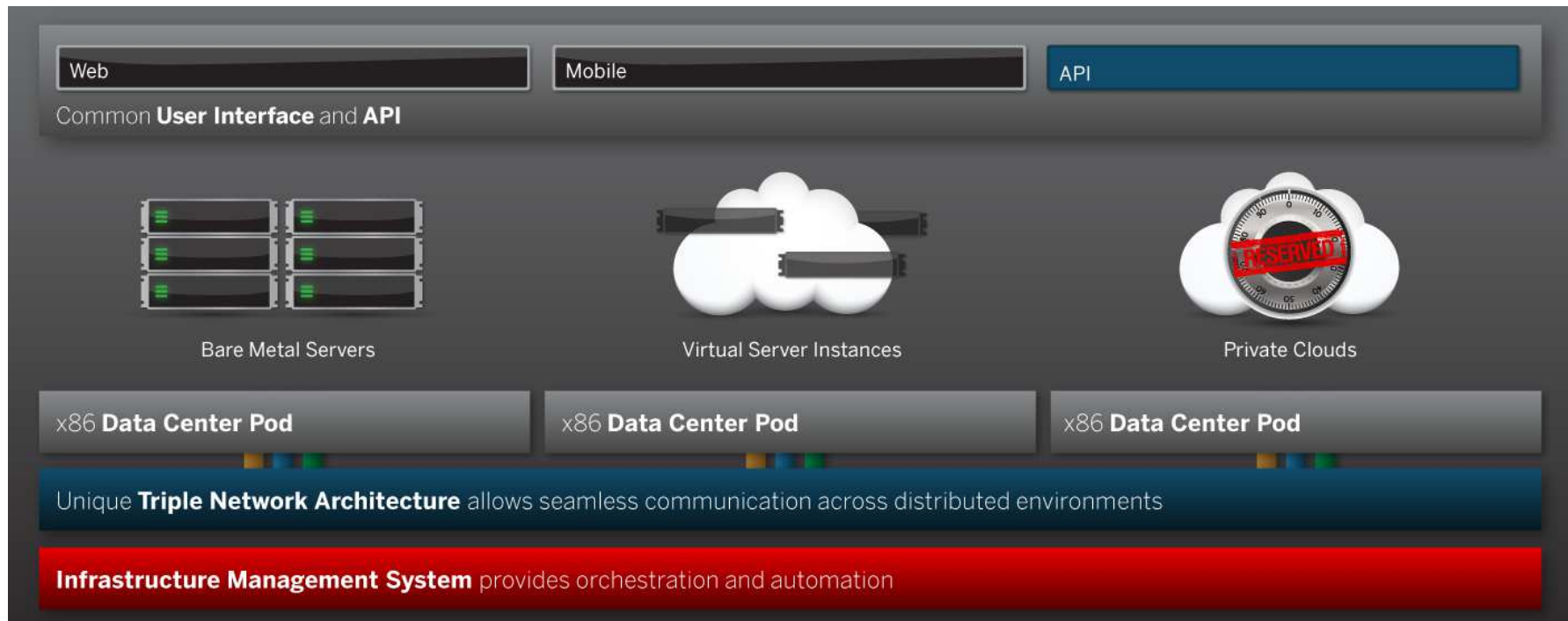
IBM Technical **Summit**



SoftLayer

Unified architecture with common management and programming interfaces

- Common command and control interface across a unified architecture
- Combine bare-metal servers, public cloud instances and private cloud deployments into distributed hybrid architectures and manage from a single control pane and API
- All deployed on-demand and provisioned in real-time
- Ideally suited to big data deployments, high I/O and latency-sensitive apps





SoftLayer include a robust, full-featured API

Improves customer control, reduces error, increases flexibility

SoftLayer API provides 1,600 function calls to over 200 services

Supports REST, SOAP & XML-RPC interfaces

Enables full auto-scaling implementations

Comprehensive documentation, libraries and support

Functions include:

- Automatic server deployment
 - Service provisioning
 - Reboots & reloads
 - Ticketing
- Hardware configuration
 - Software load
 - DNS
 - Network
 - Storage
 - Security scans
 - Monitoring

Reference Overview | SoftLayer Development Network

sidn.softlayer.com/reference/overview

SOFTLAYER

Articles Blog Reference Forums

SLDN | Reference

Reference Overview


SoftLayer API

Object Storage API

Message Queue API


Reference Overview


In effort to extend SoftLayers dedication to automation to our customers and partners, we have provided this of APIs to interact with all of our products. The APIs listed below will be your programmatic access point for integrate with your SoftLayer services. Our customer portal was built on top of the same API set we provide t our customers and is a great example of the tasks which can be performed.

 **SoftLayer API**

The SoftLayer API provides access to the majority of our products and also provides interaction with our user administration, ticketing and billing system. Each service is a gateway to one of our backend systems.

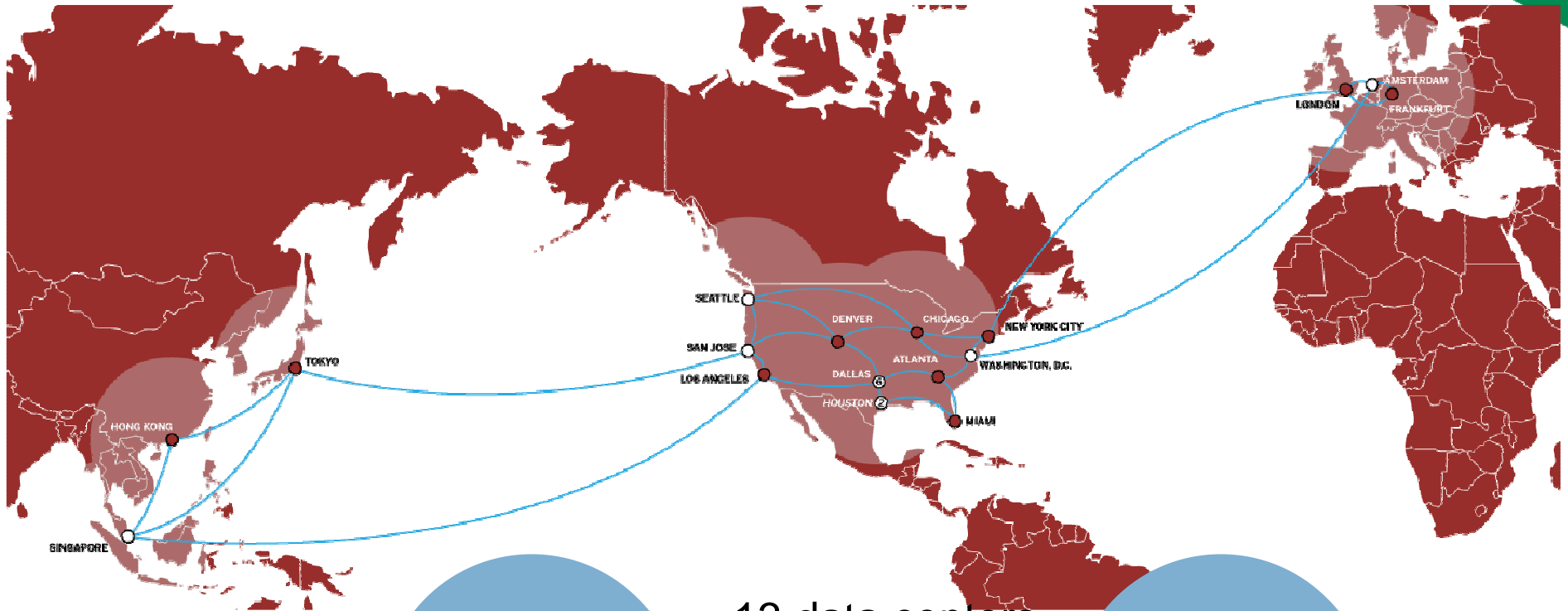
[View SoftLayer API](#)

 **Object Storage API**

 **Message Queue API**



Global Footprint – Expands Reach Around the Globe



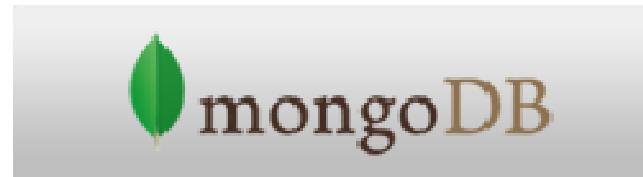
100,000
SERVERS

13 data centers
19 network PoPs
Global network

22,000,000
DOMAINS



Big Data Solutions



- Push-button provisioning of complex, multi-server deployments via online Solution Designer
- Support for distributed environments
- Solutions leverage performance of local storage and bare-metal compute; outperform commodity public clouds

MongoDB Engineered in partnership with 10gen

Riak Engineered in partnership with Basho



Factoring Essential Applications to Drive Innovation and Growth

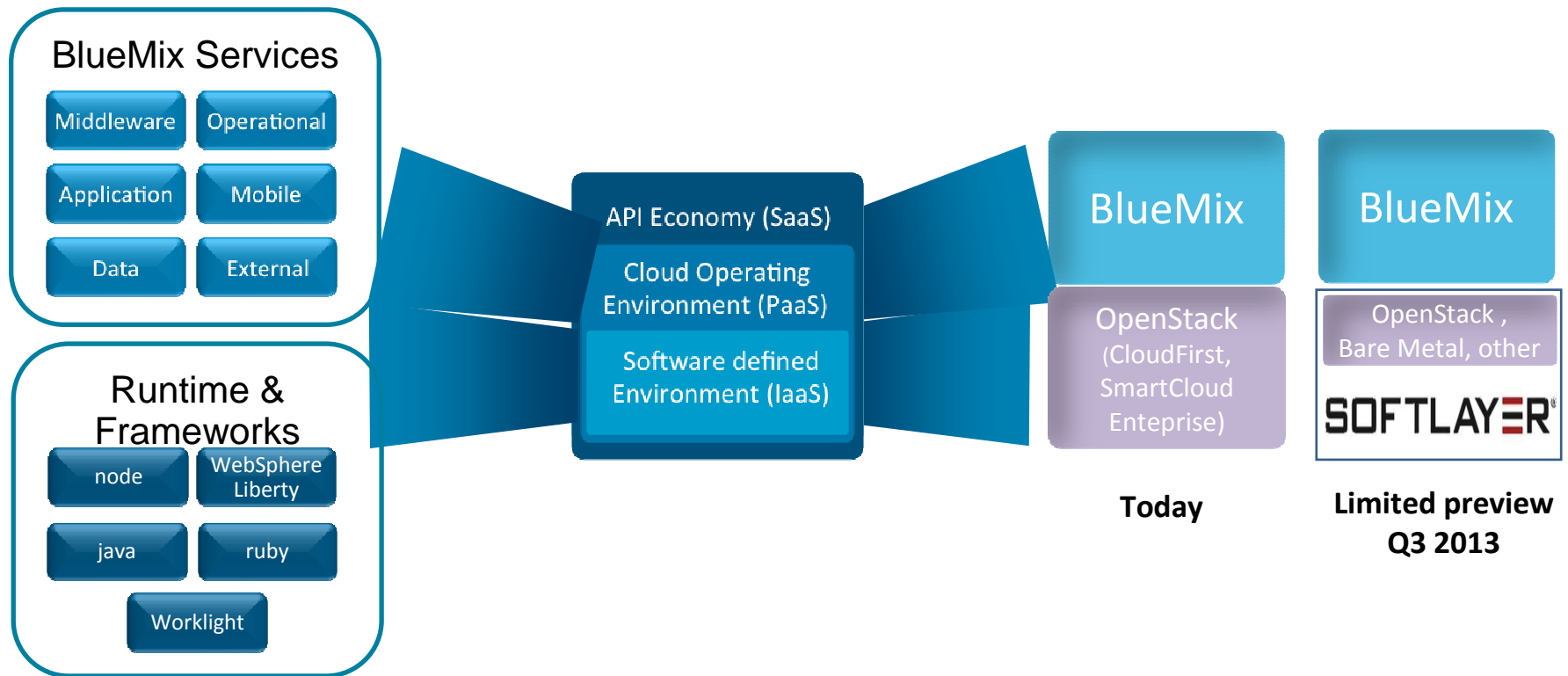
Cloud Without Compromise





SoftLayer helps to accelerate innovation taking place across IBM and deliver expand value to market

- **BlueMix** Defined
- IBM initiative to develop an open Cloud Operating Environment
- IBM and partner cloud services
- Integrated DevOps with both Browser and Eclipse-based tools





Next steps

- Check out SoftLayer's pricing and configs:
 - <https://www.softlayer.com/cloudlayer/build-your-own-cloud>
- Connect with IBM on your SoftLayer project:
 - <https://www.softlayer.com/ibmpartners>
- Dig deeper on BlueMix:
 - <http://www-01.ibm.com/software/ebusiness/jstart/bluemix/infocenter.html>
- Resources for developing in the cloud, for the cloud:
 - <https://www.ibm.com/developerworks/cloud/index.html>
- Create applications with IBM's JazzHub:
 - <https://hub.jazz.net/learn>
- Analyze investment trends in the growth initiatives:
 - <http://www.ibm.com/smarterplanet/us/en/centerforappliedinsights/article/techtrends.html>

Thank you!

IBM Technical **Summit**



© Copyright IBM Corporation 2013

IBM Global Services
Route 100
Somers, NY 10589 U.S.A.

Produced in the United States of America
May 2013

IBM, the IBM logo and ibm.com are trademarks of International Business Machines Corporation in the United States, other countries or both. If these and other IBM trademarked terms are marked on their first occurrence in this information with a trademark symbol (® or ™), these symbols indicate U.S. registered or common law trademarks owned by IBM at the time this information was published. Such trademarks may also be registered or common law trademarks in other countries. Other product, company or service names may be trademarks or service marks of others. A current list of IBM trademarks is available on the web at "Copyright and trademark information" at ibm.com/legal/copytrade.shtml

This document is current as of the initial date of publication and may be changed by IBM at any time. Not all offerings are available in every country in which IBM operates.

The performance data discussed herein is presented as derived under specific operating conditions. Actual results may vary. It is the user's responsibility to evaluate and verify the operation of any other products or programs with IBM products and programs. THE INFORMATION IN THIS DOCUMENT IS PROVIDED "AS IS" WITHOUT ANY WARRANTY, EXPRESS OR IMPLIED, INCLUDING WITHOUT ANY WARRANTIES OF MERCHANTABILITY, FITNESS FOR A PARTICULAR PURPOSE AND ANY WARRANTY OR CONDITION OF NON-INFRINGEMENT. IBM products are warranted according to the terms and conditions of the agreements under which they are provided.

IBM Technical **Summit**