

# Pulse

Comes to You



*Managing the World's Infrastructure*

# Tivoli Security, Risk and Compliance Management Portfolio Update

Nick Briers,  
Tivoli Security, Risk and Compliance Product  
Management

# Agenda

- Security threats and challenges
- Tivoli Security Solutions
  - Identity & Access Assurance
  - Data & Application Security
  - Tivoli Security Management for system z
- Why Tivoli?



## Threats are on the rise...

### Credit Card Numbers Stolen From Movie Theater Computer Merrimack Police Say Numerous People Report Credit Card Problems

POSTED: 5:05 pm EST December 10, 2008

Extra 12/12/2008 10:00 AM ET

msn money

#### Businesses see rise in employee theft

Employers suspect workers are pilfering from them to cope with tough financial times. One surprise: Often the most trusted employees are the guilty parties.

By The Wall Street Journal

#### U.S. E-Commerce Fraud Total Will Hit \$4 Billion, Study Says

By Tim Wilson, [DarkReading](#)

Online fraud costs merchants about 1.4 percent of their top-line revenue annually, survey says

#### Police seize gang tied to US\$62m credit fraud

Rasha Abu Baker

Last Updated: December 16, 2008 12:28PM UAE / December 16, 2008

**TheNational**

#### Berlin Bank Accused of Country's Largest Data Leak

13.12.2008

Consumers in Germany have been affected by what is being calling the country's largest data leak. A Berlin bank has reportedly lost data on thousands of credit card customers -- including their PIN numbers.

### HP, Symantec warn employees after laptop thefts

It's an embarrassment to the companies, says analyst

Robert McMillan

December 11, 2008 ([IDG News Service](#)) Technology vendors [Hewlett-Packard Co.](#) and [Symantec Corp.](#) are warning employees that their names and Social Security numbers may have recently fallen into criminal hands after two separate laptop thefts.



# Today's Security Challenges

## Trusting Identities



Customers or criminals?

Partners or competitors?

Employees or hackers?

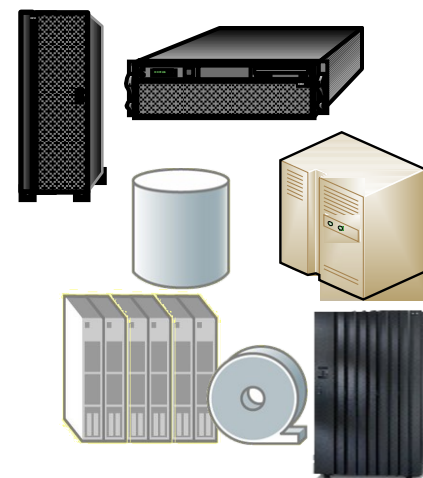
## Managing Access



## Securing Services

- Payroll
- Online banking
- Loan applications
- Retail sales
- Inventory

## Protecting Data



# Tivoli Security Solutions

## **Identity & Access Assurance**



Reduce cost and risk by easing the onboarding and offboarding of users, reporting on user activity

## **Data & Application Security**



Protect business information and reputation by safeguarding data in use or at rest

## **Security Management for System z**



Improve mainframe security administration & enable integrated mainframe & distributed security workloads



# Why Identity and Access Assurance?

- Improve Service
  - Enable collaboration via role based portals with access to enterprise services and applications
  - Increase market reach with federated business models leveraging trusted identity information
- Reduce Cost
  - Reduce help desk costs, password resets
  - More efficiently manage restructuring
  - ERP deployments / upgrades
- Manage Risk
  - Recertification, Access Attestation
  - Prevent insider breach
  - Privileged / Shared IDs
  - National ID / Trusted ID – provisioning of strong / trusted credentials.



# Identity and Access Assurance

## Tivoli Capabilities

- User provisioning & role management
- Unified single-sign-on
- Application entitlement management
- Privileged user activity audit & reporting
- Log Management
- Directory and integration services
- Self-service password reset
- Identity Assurance / Strong authentication management

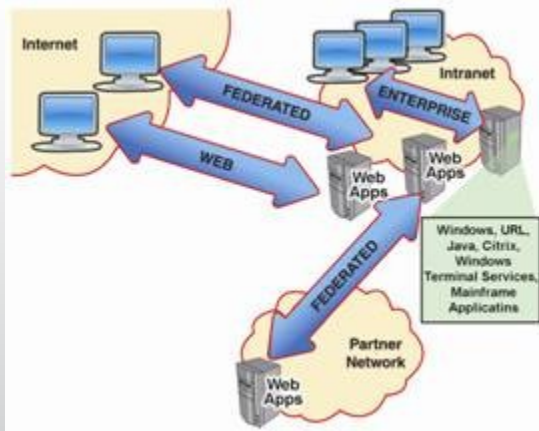
## Benefits:

- Reduce help desk operating expenses
- Comply with regulations
- Improve user productivity
- Reduce risk from privileged insiders
- Respond quickly to business initiatives (e.g. new applications, M&A, restructuring)

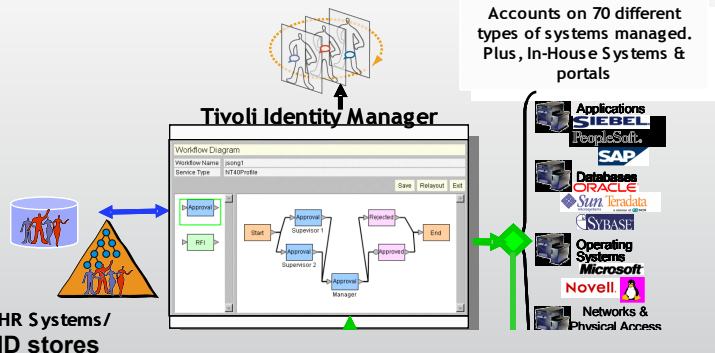


# Getting started with Identity and Access Assurance

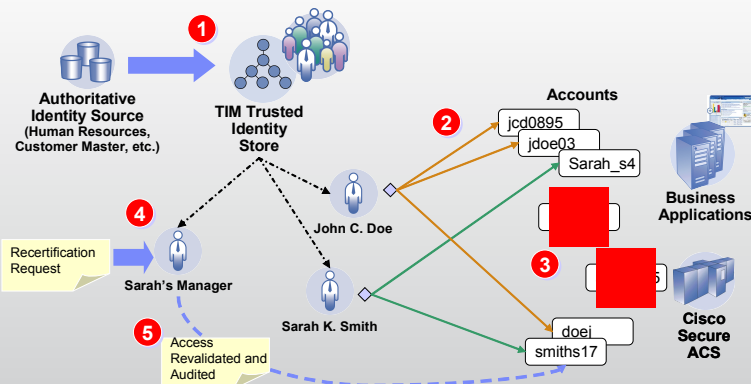
Single Sign On  
& Password Management



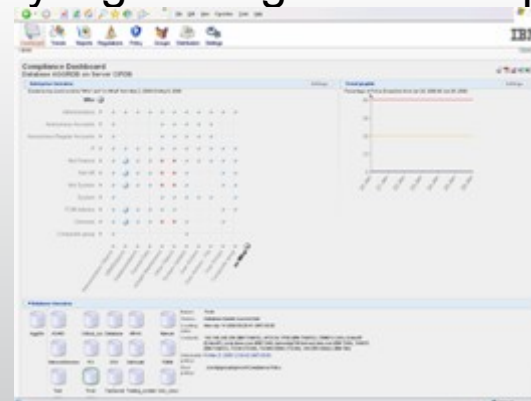
## User Provisioning / Role Management



## Access Attestation

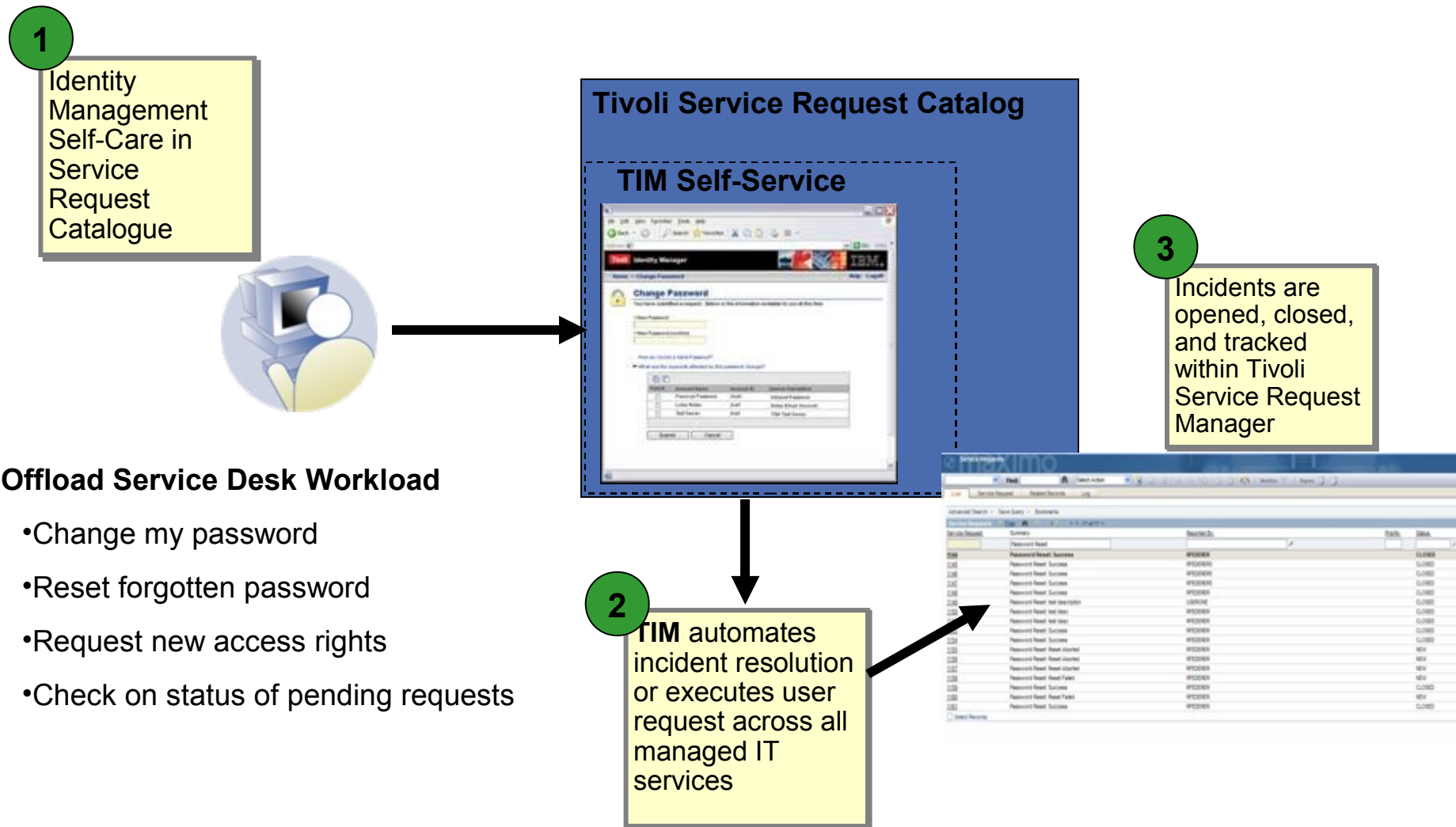


## Security log management & reporting

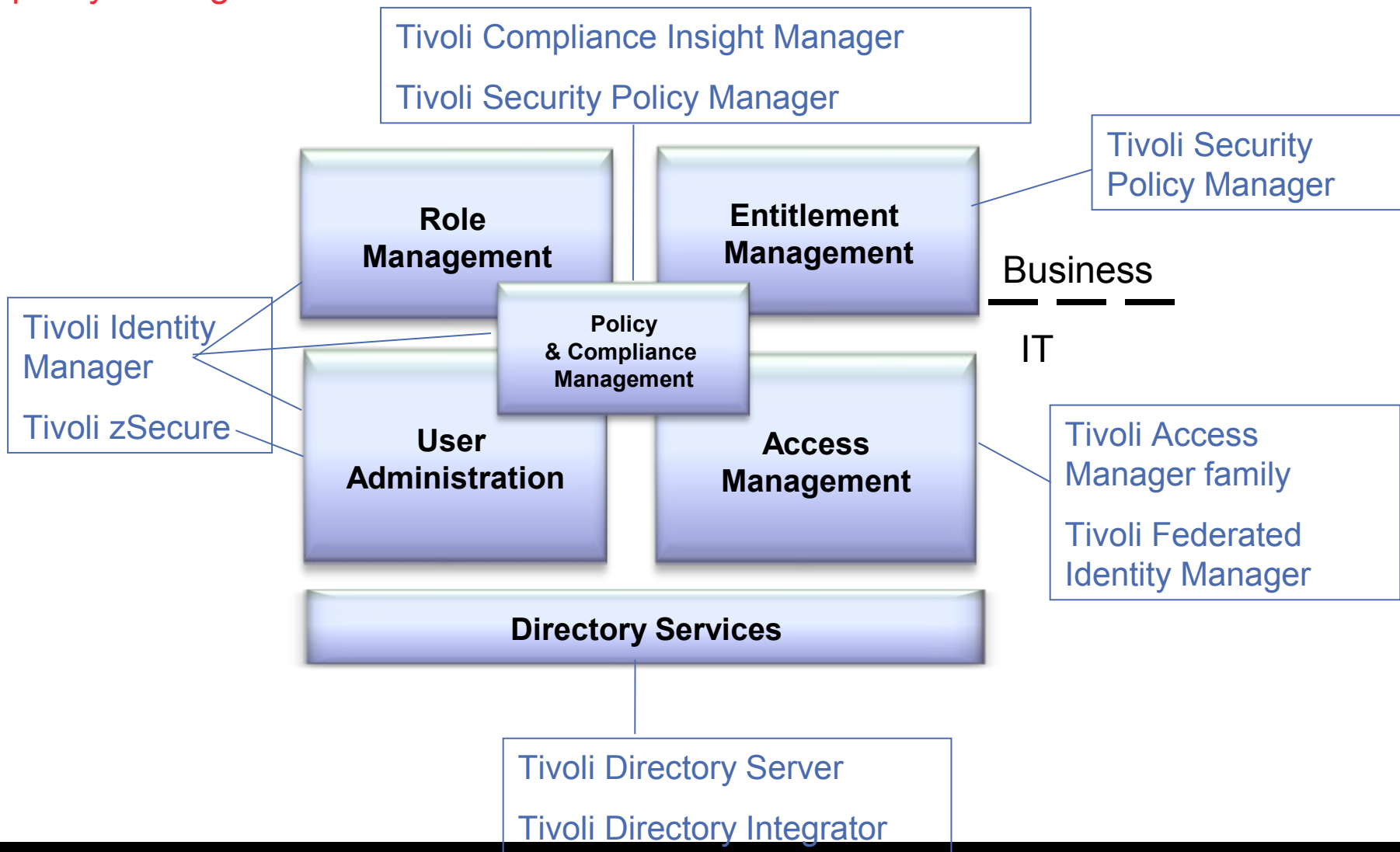




# Identity Management services and related Incident Management integrated with Tivoli Service Request Manager



# IBM's Identity and Access Assurance strategy delivers identity governance using policy management



# Why Data and Application Security?

- Improve Service
  - Enable Outsourcing / Data Sharing
  - Grow business, enable collaborative design / supply chain
- Reduce Cost
  - Reduce “cost of compliance”
  - Storage upgrade: centralized key management
  - SOA, SharePoint, DataPower, Portal
- Manage Risk
  - Data loss / leakage
  - Data disclosure / privacy regulations
  - Failed audits, insider breach in industry
  - Lost backup tapes / disks



# Data and Application Security

## Tivoli Capabilities

- Centralized key management
- Inter-organization data collaboration
- Centralized, fine-grained access control to information
- Audit and reporting of data usage
- Security log management
- Centralized server administration integrity, including virtual servers

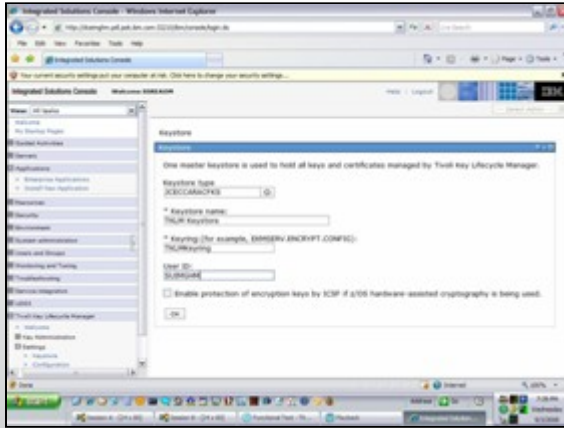
## Benefits:

- Data disclosure and privacy compliance
- Application security and agility
- Secure 3rd party collaboration
- Protect IP / data-in-use
- Secure storage / data-at-rest

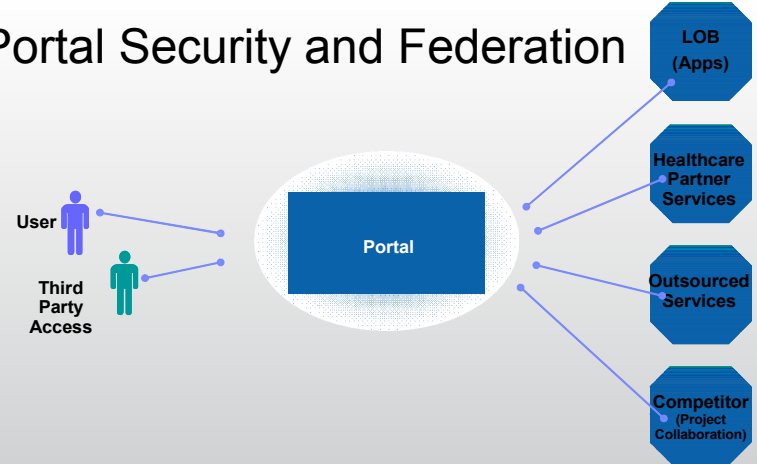


# Getting started with Data and Application Security

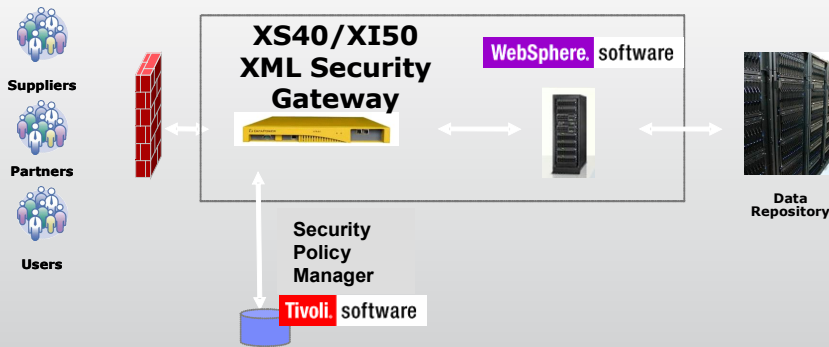
Encrypted Disks & Archive Tapes with Key Management



Portal Security and Federation



SharePoint / DataPower management

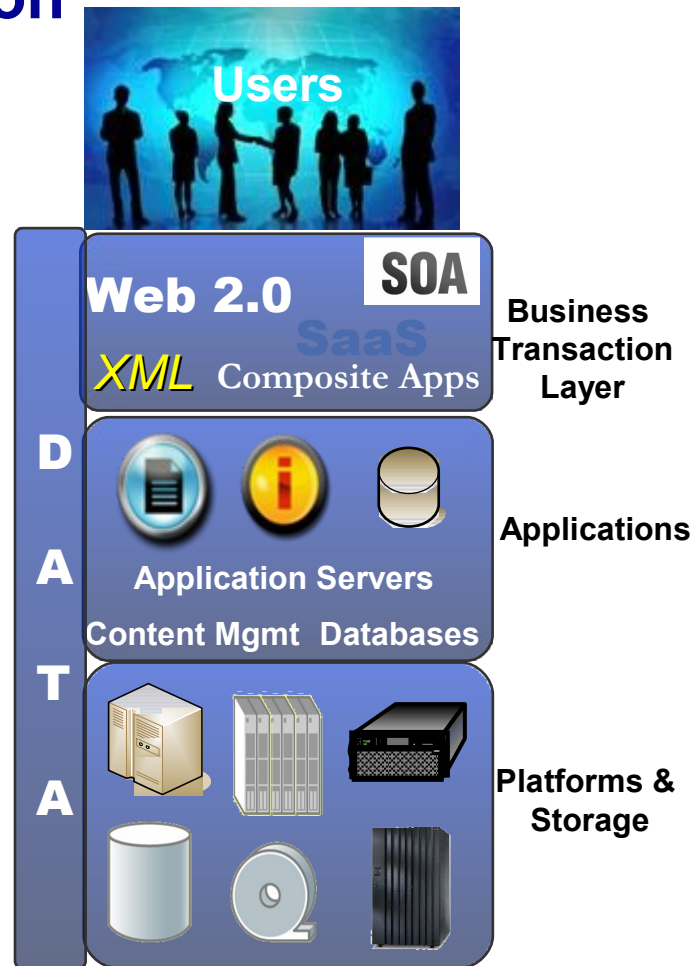


Security log management & reporting



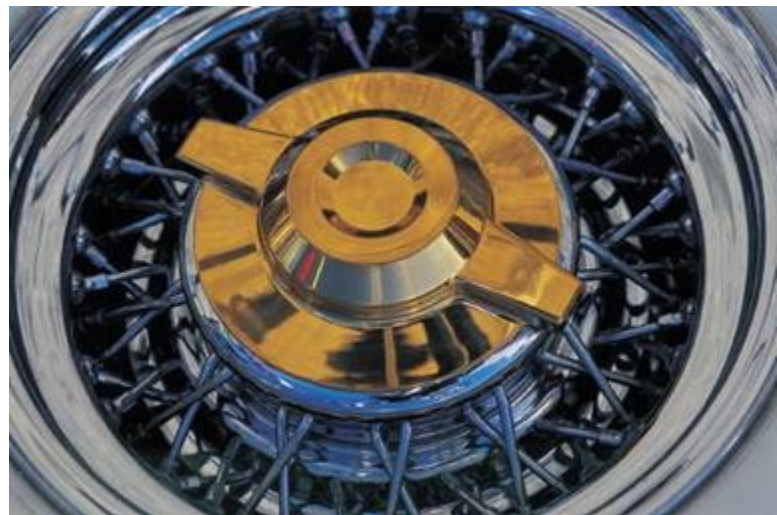
# Solution: Data & Application Protection

- 1 *Security Policy Management and Security Services*
- 2 *Application & Data Entitlements Management*
- 3 *Encryption Key Management for tape and disk*



# Why Security Management for System z?

- Improve service
  - Leverage the most secure platform in the enterprise
- Reduce cost
  - Datacenter consolidation
  - Workload consolidation on Linux on z
  - Cloud
  - Reduce “cost of compliance”
- Manage risk
  - Data disclosure / privacy regulations
  - Failed audits, breach in industry
  - Lost backup tapes



# Security management for System z

## Tivoli Capabilities

- RACF administration and auditing
- Centralized user provisioning and access mgmt
- Centralized key management
- Auditing and reporting infrastructure

## Benefits:

- Secure critical mainframe hosted data and transactions
- Comply with regulations
- Improve service availability
- Enable workload consolidation through improved, centralized security management





# Getting started with Security Management for System z

## Encrypted Disks & Archive Tapes with Key Management



Enterprise Tape 3592 Library

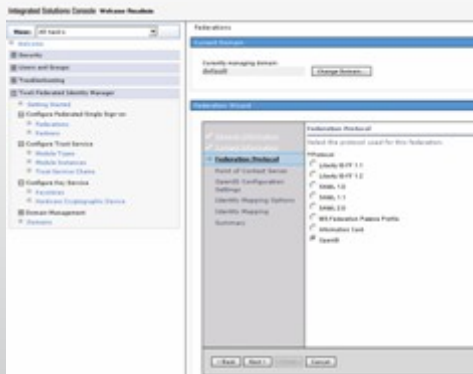


Disk Storage Array

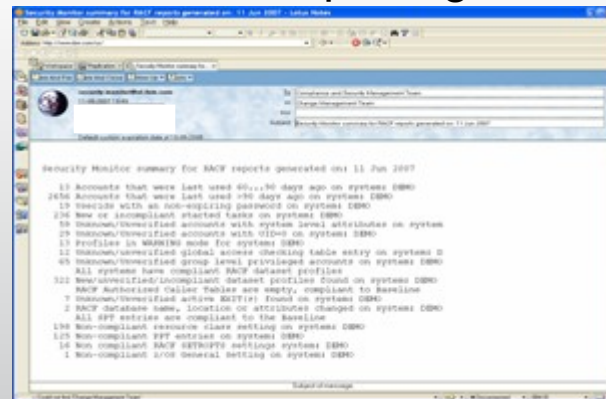
## RACF database cleanup

User	Complex	Name	DFLTGrp	Class	REPRO	SOB	gC	LCK	Grp
*****	*****	*****	*****	*****	*****	*****	*****	*****	*****

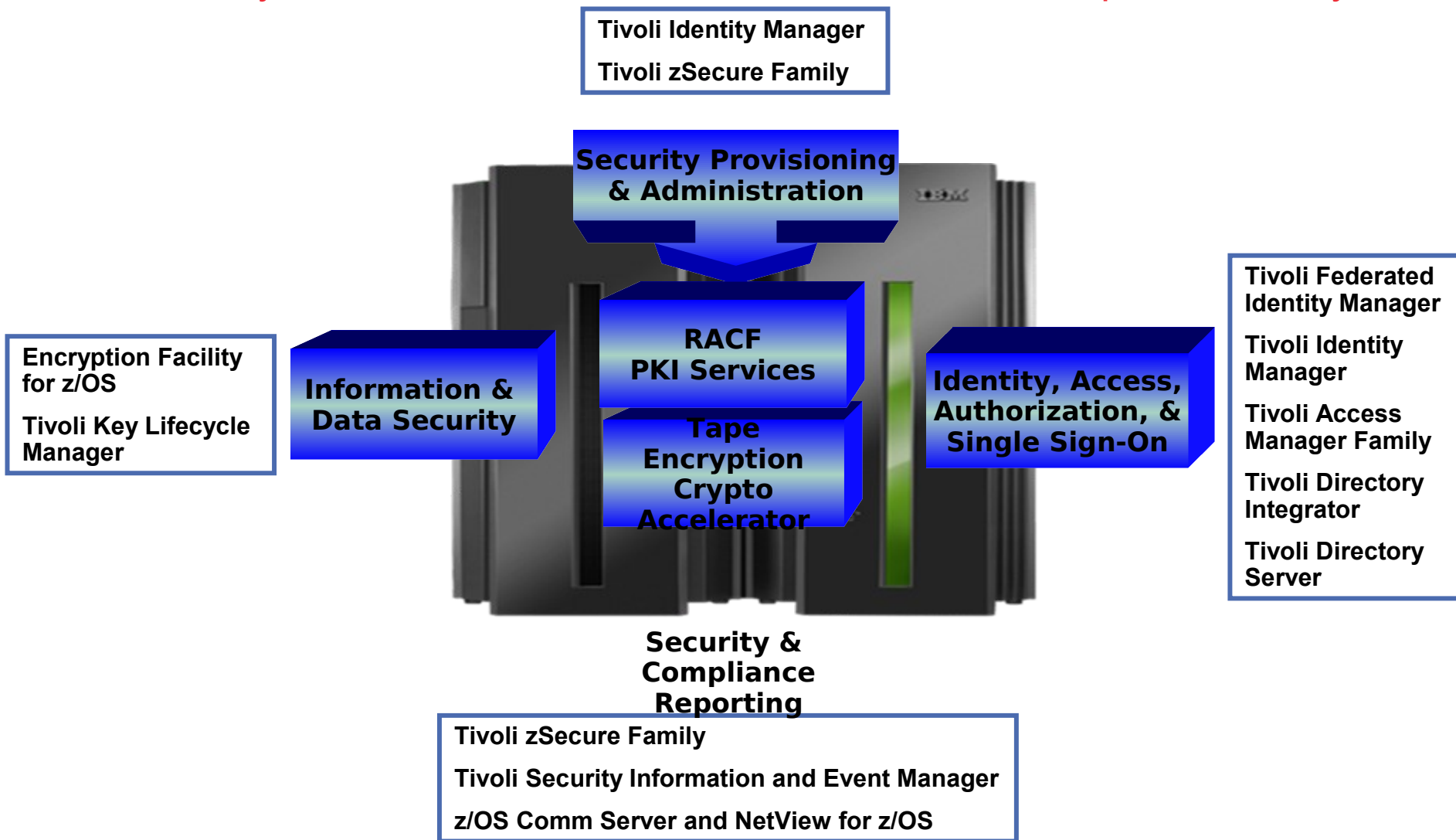
## Identity-aware Mainframe Web Services



## Mainframe audit reporting



# Tivoli Security enables the mainframe to serve as the Enterprise Security Hub



# IBM Service Management enables customers to manage the world's infrastructure securely

- **Visibility**

- The ability to see everything that's going on across the infrastructure

- Sensitive user compliance and data access dashboard and alerting
- Compliance initiative reporting
- Board level transparency required

- **Control**

- The ability to keep the infrastructure in its desired state by enforcing policies

- Consistent Processes for User Access to Business Applications

- **Automation**

- The ability to manage huge and growing infrastructures while controlling cost and quality

- Automated process for granting and removing users right to access applications and resources
- Self service password resets
- Policy driven identity governance



# Tivoli Security, Risk and Compliance Management

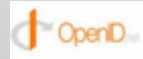
A leader in security standards work

- Open standards: OpenID, OASIS, XACML, KMIP
- OpenSource: Eclipse Project Higgins
- IBM Delivery of Standards Support:

- Project Higgins: TSPM, TFIM

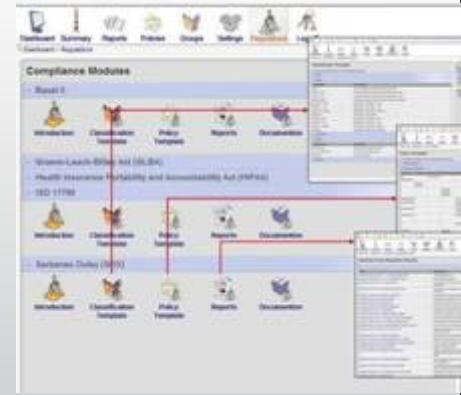


- OpenID exploitation: TFIM



compliance initiative support

- ISO 27001
- PCI
- HIPAA
- SOX
- Basel II
- And more...



part of a comprehensive Security strategy



and an integral part of Service Management



## IBM Tivoli : why we stand out from the pack...

- IBM is only vendor that truly enables the mainframe to serve as the Enterprise Security Hub
  - Broad strategy that brings unified security process across the mainframe and distributed environments
  - Improved administration, security processes, Audit and Compliance and end to end identity mgmt ( zSecure, RACF, TFIM, TIM)
- IBM integrates security with Service Request Management
  - Offload service desk workload with TIM's self-service password management while still performing necessary incident tracking from Service Desk.
- Closed loop SIEM & IAM integration offers end to end identity management across the lifecycle
  - This includes PROOFING a user before issuing them credentials ( IBM Identity Resolution, IBM Relationship Resolution)
  - This also includes continual monitoring of users, their rights and what users have done with those rights ( Tivoli SIEM and Tivoli IAM integration )
- IBM offers a broad and flexible portfolio of application and business process security capabilities across a range of applications and platforms.
  - Closed-loop user management and compliance ( even privileged users! )
  - Integration with applications controls vendors ( Approva, SAP-GRC)
  - SOA Security
  - Closed loop App Security with TAMEb and Rational AppScan
  - Strong Authentication integration



# Thank You

**Pulse**

Comes to You 2009



# Trademarks and disclaimers

Intel, Intel logo, Intel Inside, Intel Inside logo, Intel Centrino, Intel Centrino logo, Celeron, Intel Xeon, Intel SpeedStep, Itanium, and Pentium are trademarks or registered trademarks of Intel Corporation or its subsidiaries in the United States and other countries./ Linux is a registered trademark of Linus Torvalds in the United States, other countries, or both. Microsoft, Windows, Windows NT, and the Windows logo are trademarks of Microsoft Corporation in the United States, other countries, or both. IT Infrastructure Library is a registered trademark of the Central Computer and Telecommunications Agency which is now part of the Office of Government Commerce. ITIL is a registered trademark, and a registered community trademark of the Office of Government Commerce, and is registered in the U.S. Patent and Trademark Office. UNIX is a registered trademark of The Open Group in the United States and other countries. Java and all Java-based trademarks are trademarks of Sun Microsystems, Inc. in the United States, other countries, or both. Other company, product, or service names may be trademarks or service marks of others. Information is provided "AS IS" without warranty of any kind.

The customer examples described are presented as illustrations of how those customers have used IBM products and the results they may have achieved. Actual environmental costs and performance characteristics may vary by customer.

Information concerning non-IBM products was obtained from a supplier of these products, published announcement material, or other publicly available sources and does not constitute an endorsement of such products by IBM. Sources for non-IBM list prices and performance numbers are taken from publicly available information, including vendor announcements and vendor worldwide homepages. IBM has not tested these products and cannot confirm the accuracy of performance, capability, or any other claims related to non-IBM products. Questions on the capability of non-IBM products should be addressed to the supplier of those products.

All statements regarding IBM future direction and intent are subject to change or withdrawal without notice, and represent goals and objectives only.

Some information addresses anticipated future capabilities. Such information is not intended as a definitive statement of a commitment to specific levels of performance, function or delivery schedules with respect to any future products. Such commitments are only made in IBM product announcements. The information is presented here to communicate IBM's current investment and development activities as a good faith effort to help with our customers' future planning.

Performance is based on measurements and projections using standard IBM benchmarks in a controlled environment. The actual throughput or performance that any user will experience will vary depending upon considerations such as the amount of multiprogramming in the user's job stream, the I/O configuration, the storage configuration, and the workload processed. Therefore, no assurance can be given that an individual user will achieve throughput or performance improvements equivalent to the ratios stated here.

Prices are suggested U.S. list prices and are subject to change without notice. Starting price may not include a hard drive, operating system or other features. Contact your IBM representative or Business Partner for the most current pricing in your geography.

Photographs shown may be engineering prototypes. Changes may be incorporated in production models.

© IBM Corporation 1994-2009. All rights reserved.

References in this document to IBM products or services do not imply that IBM intends to make them available in every country.

Trademarks of International Business Machines Corporation in the United States, other countries, or both can be found on the World Wide Web at <http://www.ibm.com/legal/copytrade.shtml>.



***Bu sunum 28 Mayıs 2009 tarihinde Swiss Otel'de yapılan Tivoli Pulse 2009 toplantısı için hazırlanmıştır.***

***<http://www.ibm.com/software/tr>***

***<http://www.ibm.com/software/tr/tivoli>***

© Copyright IBM Corporation 2009. All Rights Reserved. IBM, the IBM logo, and ibm.com are trademarks or registered trademarks of International Business Machines Corporation in the United States, other countries, or both. If these and other IBM trademarked terms are marked on their first occurrence in this information with a trademark symbol (® or ™), these symbols indicate U.S. registered or common law trademarks owned by IBM at the time this information was published. Such trademarks may also be registered or common law trademarks in other countries. A current list of IBM trademarks is available on the Web at "Copyright and trademark information at [www.ibm.com/legal/copytrade.shtml](http://www.ibm.com/legal/copytrade.shtml). Other company, product, or service names may be trademarks or service marks of others.

